

Demographics

Many of the health indicators in the 2003 Iowa Health Fact Book are presented with rates calculated using the population of the county and state. These rates are also stratified into population subgroups based on the average annual size of the county from 1992 to 2000. This not only contrasts the rural and urban aspects of the state but also includes trends in age and ethnic distribution of the population. The Year 2000 US standard population age distribution is used for calculating age-adjusted rates. Population estimates have been obtained from the US Census via the National Cancer Institute's SEER*Stat software program. Estimates are used for each year and year groupings where appropriate.

KEY CHANGES IN IOWA DEMOGRAPHICS...

- ✓ Increasing age of the population
- ✓ Increasing urbanization
- ✓ Growing ethnic populations

Using the average annual population from 1992-2000, there were 18 counties with less than 10,000 population, 45 counties with 10,000 to 20,000 residents, 26 counties with 20,000 to 50,000 residents, and 10 Metropolitan Statistical Area (MSA) counties. The distribution of the population by age is different between the county groupings. The larger size counties have a greater percentage of their population as young adults (15-44 years) compared to the small counties. The small counties have a larger percentage of persons 65 years of age or older. These differences in age distribution are standardized through age-adjustment so risk factors other than age can be compared. As shown, the population of the state has become older since 1970. The percent of Iowans age 65 and older increased steadily through the early 1990's, but has slightly decreased since then.

State Population Distributions

Average Annual Population Distribution by Gender: 1992-2000						Average Annual Population			
County	Male	% Male	Female	% Female	Total	2000-2002	1998-2001	1998-2002	
	Counties with Average Population < 10,000								
Adair	4,066	48.7%	4,288	51.3%	8,354	8,086	8,227	8,179	
Adams	2,239	49.1%	2,320	50.9%	4,559	4,422	4,469	4,452	
Audubon	3,334	48.0%	3,619	52.0%	6,953	6,718	6,830	6,793	
Clarke	4,196	48.3%	4,493	51.7%	8,689	9,126	9,002	9,013	
Davis	4,166	49.2%	4,296	50.8%	8,462	8,584	8,539	8,549	
Decatur	4,097	48.6%	4,335	51.4%	8,432	8,660	8,635	8,633	
Fremont	3,908	48.2%	4,198	51.8%	8,106	7,876	7,970	7,925	
Howard	4,882	49.0%	5,085	51.0%	9,967	9,863	9,937	9,911	
Ida	3,923	48.4%	4,182	51.6%	8,105	7,717	7,842	7,804	
Lucas	4,488	48.3%	4,812	51.7%	9,300	9,438	9,443	9,443	
Monroe	3,946	48.5%	4,186	51.5%	8,132	7,920	8,021	7,984	
Osceola	3,475	48.6%	3,669	51.4%	7,144	6,916	7,021	6,981	
Pocahontas	4,382	48.7%	4,608	51.3%	8,990	8,476	8,703	8,629	
Ringgold	2,608	48.1%	2,815	51.9%	5,423	5,398	5,448	5,418	
Taylor	3,369	48.0%	3,647	52.0%	7,016	6,938	6,954	6,943	
Van Buren	3,838	49.6%	3,893	50.4%	7,731	7,792	7,781	7,785	
Wayne	3,292	47.7%	3,609	52.3%	6,901	6,684	6,739	6,721	
Worth	3,898	49.1%	4,045	50.9%	7,943	7,831	7,885	7,861	
Total	68,107	48.6%	72,100	51.4%	140,207	138,445	139,446	139,024	
Counties with Average Population 10,000 – 20,000									
Allamakee	7,154	49.5%	7,288	50.5%	14,442	14,595	14,609	14,605	
Appanoose	6,562	47.7%	7,197	52.3%	13,769	13,563	13,693	13,635	
Butler	7,596	49.0%	7,901	51.0%	15,497	15,181	15,290	15,244	
Calhoun	5,593	49.1%	5,795	50.9%	11,388	10,965	11,148	11,082	
Cass	7,190	48.2%	7,740	51.8%	14,930	14,477	14,660	14,575	
Cedar	8,790	49.2%	9,093	50.8%	17,883	18,262	18,159	18,198	
Cherokee	6,598	48.8%	6,910	51.2%	13,508	12,898	13,063	13,003	
Chickasaw	6,606	49.9%	6,629	50.1%	13,235	13,013	13,155	13,102	
Clay	8,448	48.0%	9,137	52.0%	17,585	17,236	17,379	17,316	
Clayton	9,302	49.3%	9,560	50.7%	18,862	18,503	18,729	18,658	
Crawford	8,291	49.3%	8,525	50.7%	16,816	16,956	16,930	16,936	
Delaware	9,075	49.4%	9,286	50.6%	18,361	18,332	18,403	18,387	
Dickinson	7,671	48.4%	8,163	51.6%	15,834	16,505	16,380	16,409	
Emmet	5,498	48.4%	5,859	51.6%	11,357	10,859	11,057	10,991	
Floyd	8,167	48.0%	8,853	52.0%	17,020	16,681	16,864	16,805	
Franklin	5,341	48.7%	5,637	51.3%	10,978	10,690	10,756	10,748	
Greene	4,989	48.3%	5,331	51.7%	10,320	10,209	10,334	10,297	
Grundy	5,947	48.6%	6,295	51.4%	12,242	12,376	12,328	12,346	
Guthrie	5,492	48.8%	5,763	51.2%	11,255	11,320	11,343	11,338	
Hamilton	8,023	49.1%	8,318	50.9%	16,341	16,295	16,366	16,339	
Hancock	5,951	49.0%	6,189	51.0%	12,140	11,960	12,055	12,010	
Hardin	9,203	48.6%	9,725	51.4%	18,928	18,588	18,765	18,689	
Harrison	7,455	48.8%	7,824	51.2%	15,279	15,653	15,604	15,600	
Humboldt	5,103	48.7%	5,370	51.3%	10,473	10,284	10,395	10,348	
Iowa	7,414	48.7%	7,822	51.3%	15,236	15,779	15,630	15,666	
Jefferson	8,037	48.8%	8,420	51.2%	16,457	16,075	16,283	16,216	
Keokuk	5,574	48.6%	5,907	51.4%	11,481	11,412	11,380	11,387	
Kossuth	8,602	48.7%	9,043	51.3%	17,645	16,878	17,144	17,050	
Louisa	5,961	49.8%	6,005	50.2%	11,966	12,213	12,172	12,186	
Lyon	5,835	49.4%	5,986	50.6%	11,821	11,720	11,788	11,770	
Madison	6,579	49.1%	6,812	50.9%	13,391	14,257	13,958	14,066	
Mills	6,926	49.9%	6,956	50.1%	13,882	14,620	14,467	14,516	

Source: Population Division, U.S. Census Bureau and SEER STAT

State Population Distributions (continued)

Average Annual Population Distribution by Gender: 1992-2000							Average Annual Population			
	County	Male	% Male	Female	% Female	Total	2000-2002	1998-2001	1998-2002	
	Counties with Average Population 10,000 – 20,000 (continued)	Mitchell	5,325	48.8%	5,588	51.2%	10,913	10,764	10,842	10,811
Monona		4,841	48.1%	5,223	51.9%	10,064	9,901	9,999	9,964	
Montgomery		5,630	47.3%	6,275	52.7%	11,905	11,597	11,748	11,685	
O'Brien		7,514	48.6%	7,962	51.4%	15,476	14,947	15,174	15,107	
Page		8,450	49.7%	8,548	50.3%	16,998	16,766	17,064	16,958	
Palo Alto		5,011	48.6%	5,310	51.4%	10,321	10,020	10,140	10,089	
Poweshiek		9,089	48.1%	9,819	51.9%	18,908	18,870	18,825	18,840	
Sac		5,815	48.8%	6,096	51.2%	11,911	11,307	11,604	11,502	
Shelby		6,485	48.9%	6,781	51.1%	13,266	13,028	13,160	13,122	
Tama		8,745	48.8%	9,169	51.2%	17,914	18,026	18,085	18,057	
Union		5,898	47.6%	6,494	52.4%	12,392	12,200	12,314	12,275	
Winnebago		5,732	48.6%	6,050	51.4%	11,782	11,647	11,682	11,661	
Wright		6,997	48.3%	7,484	51.7%	14,481	14,161	14,347	14,275	
Total			310,505	48.8%	326,138	51.2%	636,653	631,589	635,271	633,864
Counties with Average Population > 20,000		Benton	11,998	49.6%	12,169	50.4%	24,167	25,719	25,267	25,432
		Boone	12,447	48.5%	13,230	51.5%	25,677	26,228	26,146	26,150
	Bremer	11,255	48.4%	11,980	51.6%	23,235	23,330	23,365	23,347	
	Buchanan	10,434	49.4%	10,673	50.6%	21,107	20,979	21,078	21,040	
	Buena Vista	10,088	49.3%	10,360	50.7%	20,448	20,329	20,370	20,368	
	Carroll	10,488	48.6%	11,112	51.4%	21,600	21,221	21,485	21,411	
	Cerro Gordo	22,417	47.8%	24,507	52.2%	46,924	45,794	46,437	46,217	
	Clinton	24,590	48.3%	26,294	51.7%	50,884	49,842	50,214	50,101	
	Des Moines	20,585	48.1%	22,204	51.9%	42,789	41,905	42,364	42,183	
	Fayette	10,865	49.1%	11,274	50.9%	22,139	21,820	21,989	21,931	
	Henry	10,125	50.6%	9,891	49.4%	20,016	20,237	20,315	20,277	
	Jackson	9,948	49.2%	10,254	50.8%	20,202	20,270	20,258	20,248	
	Jasper	17,825	49.5%	18,155	50.5%	35,980	37,327	37,141	37,188	
	Jones	10,615	52.4%	9,640	47.6%	20,255	20,291	20,262	20,294	
	Lee	19,087	49.3%	19,627	50.7%	38,714	37,429	38,081	37,845	
	Mahaska	10,890	49.4%	11,169	50.6%	22,059	22,291	22,338	22,315	
	Marion	15,523	49.7%	15,685	50.3%	31,208	32,474	32,041	32,167	
	Marshall	19,139	49.2%	19,726	50.8%	38,865	39,402	39,314	39,347	
	Muscatine	20,391	49.3%	20,941	50.7%	41,332	41,895	41,645	41,724	
	Plymouth	12,068	49.4%	12,363	50.6%	24,431	24,774	24,758	24,731	
	Sioux	15,280	48.8%	16,019	51.2%	31,299	31,744	31,684	31,713	
	Story	39,720	51.4%	37,574	48.6%	77,294	80,347	79,446	79,686	
	Wapello	17,430	48.3%	18,640	51.7%	36,070	35,944	36,018	35,972	
Washington	9,805	48.2%	10,536	51.8%	20,341	20,944	20,690	20,773		
Webster	19,439	48.8%	20,424	51.2%	39,863	40,040	40,061	40,013		
Winneshiek	10,390	49.1%	10,771	50.9%	21,161	21,373	21,311	21,332		
Total		402,842	49.2%	415,218	50.8%	818,060	823,949	824,078	823,805	
MSA Counties	Black Hawk	60,929	47.9%	66,339	52.1%	127,268	127,709	127,830	127,742	
	Dallas	17,550	49.1%	18,177	50.9%	35,727	42,624	40,297	41,082	
	Dubuque	43,054	48.5%	45,665	51.5%	88,719	89,228	88,975	89,057	
	Johnson	52,477	49.8%	52,897	50.2%	105,374	112,870	110,399	111,179	
	Linn	89,555	48.9%	93,720	51.1%	183,275	193,673	190,667	191,527	
	Polk	172,301	48.2%	185,197	51.8%	357,498	380,745	372,734	375,325	
	Pottawattamie	41,350	48.5%	43,849	51.5%	85,199	87,977	87,314	87,483	
	Scott	76,447	48.7%	80,383	51.3%	156,830	158,988	158,499	158,688	
	Warren	19,001	48.7%	20,040	51.3%	39,041	41,126	40,497	40,702	
	Woodbury	50,167	48.7%	52,818	51.3%	102,985	103,569	103,710	103,634	
Total		622,831	48.6%	659,085	51.4%	1,281,916	1,338,509	1,320,922	1,326,419	

State Population Distributions

Average Annual Population Distribution by Gender: 1990-2000							Estimated Average Annual Populations	
	County	Male	% Male	Female	% Female	Total	2001	2002
	Counties with Average Population < 10,000	Adair	4,064	48.6%	4,301	51.4%	8,365	8,061
Adams		2,259	49.1%	2,343	50.9%	4,602	4,404	4,384
Audubon		3,366	48.0%	3,649	52.0%	7,015	6,699	6,647
Clarke		4,156	48.2%	4,468	51.8%	8,624	9,125	9,058
Davis		4,147	49.2%	4,289	50.8%	8,436	8,611	8,592
Decatur		4,074	48.5%	4,324	51.5%	8,398	8,667	8,623
Fremont		3,905	48.1%	4,221	51.9%	8,126	7,879	7,748
Howard		4,868	48.9%	5,079	51.1%	9,947	9,868	9,806
Ida		3,940	48.4%	4,203	51.6%	8,143	7,687	7,656
Lucas		4,461	48.1%	4,806	51.9%	9,267	9,466	9,443
Monroe		3,942	48.5%	4,194	51.5%	8,136	7,926	7,838
Osceola		3,488	48.6%	3,683	51.4%	7,171	6,943	6,821
Pocahontas		4,418	48.7%	4,655	51.3%	9,073	8,484	8,331
Ringgold		2,601	48.0%	2,819	52.0%	5,420	5,432	5,297
Taylor		3,365	47.9%	3,662	52.1%	7,027	6,924	6,900
Van Buren		3,831	49.6%	3,895	50.4%	7,726	7,756	7,800
Wayne		3,302	47.6%	3,629	52.4%	6,931	6,667	6,651
Worth		3,888	48.9%	4,056	51.1%	7,944	7,816	7,766
Total		68,075	48.5%	72,276	51.5%	140,351	138,415	137,348
Counties with Average Population 10,000 – 20,000		Allamakee	7,094	49.4%	7,253	50.6%	14,347	14,497
	Appanoose	6,560	47.7%	7,199	52.3%	13,759	13,582	13,404
	Butler	7,614	49.0%	7,929	51.0%	15,543	15,163	15,062
	Calhoun	5,574	48.9%	5,834	51.1%	11,408	10,990	10,818
	Cass	7,190	48.1%	7,769	51.9%	14,959	14,513	14,234
	Cedar	8,741	49.1%	9,068	50.9%	17,809	18,212	18,357
	Cherokee	6,638	48.8%	6,975	51.2%	13,613	12,916	12,764
	Chickasaw	6,604	49.9%	6,635	50.1%	13,239	13,078	12,890
	Clay	8,441	48.0%	9,155	52.0%	17,596	17,255	17,066
	Clayton	9,307	49.3%	9,577	50.7%	18,884	18,512	18,374
	Crawford	8,267	49.2%	8,534	50.8%	16,801	16,966	16,959
	Delaware	9,043	49.4%	9,269	50.6%	18,312	18,277	18,325
	Dickinson	7,589	48.4%	8,104	51.6%	15,693	16,526	16,524
	Emmet	5,516	48.4%	5,890	51.6%	11,406	10,852	10,728
	Floyd	8,151	47.9%	8,866	52.1%	17,017	16,608	16,572
	Franklin	5,364	48.6%	5,678	51.4%	11,042	10,666	10,714
	Greene	4,957	48.2%	5,318	51.8%	10,275	10,133	10,149
	Grundy	5,913	48.5%	6,283	51.5%	12,196	12,333	12,421
	Guthrie	5,456	48.7%	5,756	51.3%	11,212	11,294	11,318
	Hamilton	7,983	49.0%	8,310	51.0%	16,293	16,232	16,231
	Hancock	5,982	49.0%	6,233	51.0%	12,215	11,942	11,833
	Hardin	9,208	48.6%	9,745	51.4%	18,953	18,553	18,385
	Harrison	7,389	48.7%	7,789	51.3%	15,178	15,671	15,585
	Humboldt	5,120	48.7%	5,398	51.3%	10,518	10,321	10,160
	Iowa	7,358	48.6%	7,777	51.4%	15,135	15,816	15,809
	Jefferson	8,019	48.8%	8,412	51.2%	16,431	16,115	15,947
	Keokuk	5,587	48.6%	5,918	51.4%	11,505	11,396	11,418
	Kossuth	8,662	48.7%	9,118	51.3%	17,782	16,833	16,673
	Louisa	5,935	49.9%	5,970	50.1%	11,905	12,215	12,245
	Lyon	5,840	49.3%	6,003	50.7%	11,843	11,714	11,699
Madison	6,492	49.1%	6,743	50.9%	13,235	14,211	14,499	
Mills	6,855	49.8%	6,903	50.2%	13,758	14,576	14,714	

Source: Population Division, U.S. Census Bureau and SEER STAT

State Population Distributions (continued)

Average Annual Population Distribution by Gender: 1990-2000							Estimated Average Annual Population	
	County	Male	% Male	Female	% Female	Total	2001	2002
	Counties with Average Population 10,000 – 20,000 (continued)	Mitchell	5,320	48.7%	5,593	51.3%	10,913	10,736
Monona		4,824	48.0%	5,227	52.0%	10,051	9,872	9,827
Montgomery		5,637	47.3%	6,290	52.7%	11,927	11,563	11,434
O'Brien		7,506	48.5%	7,972	51.5%	15,478	14,937	14,837
Page		8,403	49.5%	8,571	50.5%	16,974	16,837	16,533
Palo Alto		5,035	48.5%	5,341	51.5%	10,376	10,032	9,886
Poweshiek		9,097	48.1%	9,826	51.9%	18,923	18,874	18,901
Sac		5,842	48.8%	6,128	51.2%	11,970	11,347	11,098
Shelby		6,484	48.9%	6,784	51.1%	13,268	13,031	12,972
Tama		8,690	48.7%	9,136	51.3%	17,826	18,045	17,946
Union		5,913	47.5%	6,535	52.5%	12,448	12,202	12,117
Winnebago		5,751	48.6%	6,076	51.4%	11,827	11,602	11,580
Wright		6,960	48.2%	7,478	51.8%	14,438	14,169	13,986
Total		309,911	48.7%	326,368	51.3%	636,281	631,215	628,273
Counties with Average Population > 20,000		Benton	11,824	49.6%	12,035	50.4%	23,859	25,721
	Boone	12,383	48.4%	13,220	51.6%	25,603	26,265	26,167
	Bremer	11,228	48.5%	11,945	51.5%	23,173	23,415	23,276
	Buchanan	10,399	49.4%	10,666	50.6%	21,065	20,973	20,886
	Buena Vista	10,024	49.2%	10,348	50.8%	20,372	20,259	20,360
	Carroll	10,465	48.5%	11,103	51.5%	21,568	21,186	21,113
	Cerro Gordo	22,387	47.7%	24,548	52.3%	46,935	45,713	45,339
	Clinton	24,579	48.3%	26,340	51.7%	50,919	49,807	49,650
	Des Moines	20,557	48.0%	22,228	52.0%	42,785	41,968	41,458
	Fayette	10,833	49.0%	11,276	51.0%	22,109	21,759	21,696
	Henry	10,048	50.5%	9,855	49.5%	19,903	20,289	20,122
	Jackson	9,917	49.2%	10,232	50.8%	20,149	20,292	20,208
	Jasper	17,678	49.4%	18,090	50.6%	35,768	37,356	37,375
	Jones	10,528	52.3%	9,597	47.7%	20,125	20,239	20,419
	Lee	19,069	49.2%	19,655	50.8%	38,724	37,446	36,902
	Mahaska	10,820	49.3%	11,145	50.7%	21,965	22,350	22,222
	Marion	15,420	49.7%	15,585	50.3%	31,005	32,630	32,674
	Marshall	19,059	49.2%	19,695	50.8%	38,754	39,393	39,482
	Muscatine	20,271	49.3%	20,865	50.7%	41,136	41,852	42,040
	Plymouth	11,964	49.3%	12,284	50.7%	24,248	24,830	24,626
	Sioux	15,154	48.8%	15,913	51.2%	31,067	31,830	31,829
	Story	39,497	51.4%	37,278	48.6%	76,775	80,209	80,649
	Wapello	17,371	48.2%	18,646	51.8%	36,017	36,032	35,787
	Washington	9,749	48.2%	10,480	51.8%	20,229	21,004	21,106
Webster	19,409	48.6%	20,541	51.4%	39,950	40,101	39,821	
Winneshiek	10,363	49.1%	10,760	50.9%	21,123	21,392	21,416	
Total	400,996	49.2%	414,330	50.8%	815,326	824,311	822,719	
MSA Counties	Black Hawk	60,656	47.8%	66,177	52.2%	126,833	127,777	127,394
	Dallas	17,045	49.1%	17,685	50.9%	34,730	42,594	44,222
	Dubuque	42,855	48.5%	45,502	51.5%	88,357	89,046	89,387
	Johnson	51,686	49.8%	52,173	50.2%	103,859	112,955	114,300
	Linn	88,326	48.8%	92,591	51.2%	180,917	193,825	194,970
	Polk	169,700	48.1%	182,989	51.9%	352,689	380,657	385,691
	Pottawattamie	41,070	48.5%	43,690	51.5%	84,760	87,790	88,157
	Scott	75,967	48.7%	80,033	51.3%	156,000	158,810	159,445
	Warren	18,768	48.7%	19,789	51.3%	38,557	41,064	41,523
	Woodbury	49,730	48.6%	52,532	51.4%	102,262	103,508	103,331
Total	615,803	48.5%	653,161	51.5%	1,268,964	1,338,026	1,348,420	

Average Annual Population Distribution by Age: 1990-2000

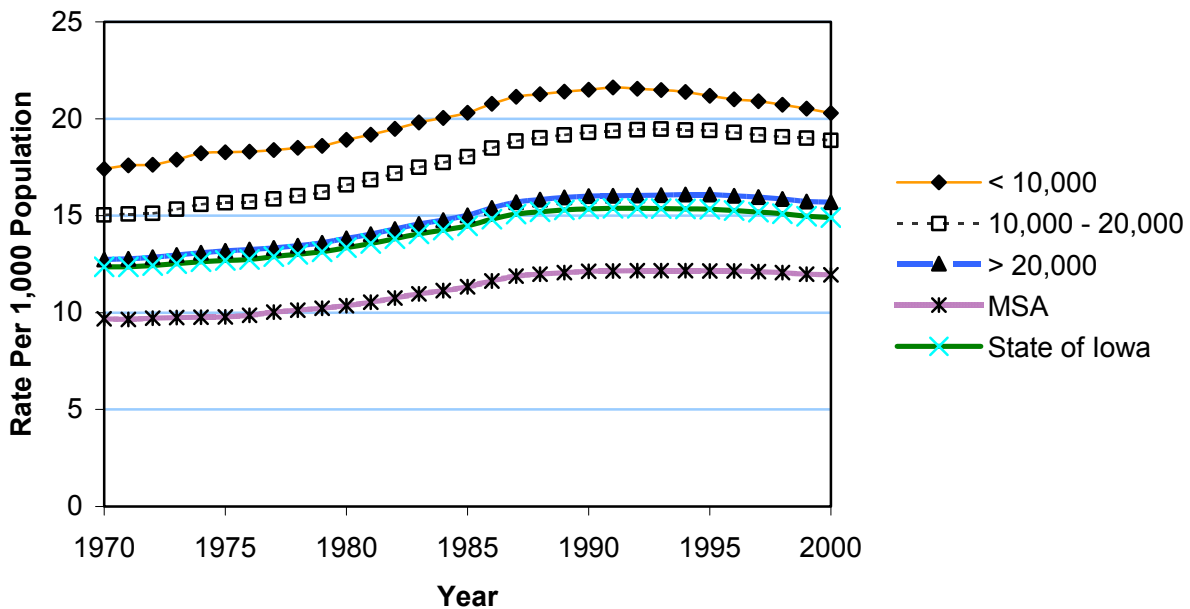
	County	% <1	% 1-4	% 5-14	% 15-24	% 25-44	% 45-64	% 65-84	% 85 +
Counties with Average Population < 10,000	Adair	1.2%	4.7%	14.1%	10.9%	25.1%	21.2%	19.0%	3.8%
	Adams	1.1%	4.9%	13.5%	10.4%	25.2%	22.8%	19.0%	3.0%
	Audubon	1.2%	5.0%	14.8%	9.8%	23.8%	21.9%	19.8%	3.7%
	Clarke	1.3%	5.0%	14.9%	11.7%	27.4%	21.1%	15.6%	3.0%
	Davis	1.2%	5.8%	15.3%	12.0%	26.3%	21.2%	15.3%	3.0%
	Decatur	1.1%	4.6%	13.0%	19.6%	22.7%	19.8%	16.2%	3.1%
	Fremont	1.1%	4.7%	15.1%	10.7%	25.4%	22.2%	18.0%	2.8%
	Howard	1.3%	4.9%	15.4%	10.9%	25.8%	20.2%	18.1%	3.3%
	Ida	1.1%	5.1%	15.3%	10.8%	25.8%	20.6%	18.1%	3.1%
	Lucas	1.0%	5.0%	14.5%	11.3%	25.7%	22.3%	17.0%	3.2%
	Monroe	1.3%	5.0%	14.8%	11.4%	26.3%	21.5%	16.7%	3.0%
	Osceola	1.2%	5.1%	15.4%	11.7%	26.8%	20.5%	16.2%	3.1%
	Pocahontas	1.1%	4.6%	15.2%	9.8%	24.8%	22.6%	18.7%	3.3%
	Ringgold	1.1%	4.6%	13.4%	10.8%	23.0%	22.5%	20.8%	3.8%
	Taylor	1.0%	4.5%	14.4%	11.2%	24.3%	21.1%	19.8%	3.6%
	Van Buren	1.1%	5.2%	14.8%	11.1%	25.7%	22.4%	16.9%	2.9%
	Wayne	1.0%	4.5%	13.7%	10.1%	24.0%	21.4%	21.1%	4.1%
	Worth	1.2%	4.6%	14.2%	10.9%	26.9%	21.8%	17.0%	3.5%
Total	1.1%	4.9%	14.6%	11.5%	25.3%	21.4%	17.8%	3.3%	
Counties with Average Population 10,000 – 20,000	Allamakee	1.1%	5.1%	15.2%	11.4%	26.6%	21.6%	16.2%	2.9%
	Appanoose	1.2%	4.6%	14.2%	11.9%	26.1%	21.3%	17.7%	3.0%
	Butler	1.1%	4.7%	14.7%	11.1%	26.3%	21.6%	17.5%	3.0%
	Calhoun	1.0%	4.5%	13.9%	10.3%	25.8%	21.7%	19.2%	3.7%
	Cass	1.1%	4.7%	14.3%	10.8%	26.2%	21.8%	17.8%	3.3%
	Cedar	1.2%	5.0%	15.1%	11.4%	29.0%	21.5%	14.3%	2.6%
	Cherokee	1.2%	4.8%	14.9%	11.3%	26.0%	22.3%	16.8%	2.8%
	Chickasaw	1.2%	5.0%	15.8%	11.8%	27.0%	21.4%	15.4%	2.5%
	Clay	1.3%	5.2%	15.0%	12.0%	28.6%	20.5%	14.8%	2.6%
	Clayton	1.2%	5.0%	15.4%	11.3%	27.1%	21.5%	15.8%	2.6%
	Crawford	1.2%	5.2%	15.1%	12.9%	26.5%	21.2%	15.2%	2.6%
	Delaware	1.3%	5.6%	17.5%	12.5%	28.3%	20.0%	12.9%	1.9%
	Dickinson	1.1%	4.3%	13.2%	10.3%	26.1%	24.1%	18.2%	2.6%
	Emmet	1.1%	4.4%	14.4%	14.7%	25.2%	20.9%	16.3%	3.0%
	Floyd	1.2%	5.1%	14.6%	11.6%	25.4%	22.4%	16.7%	3.0%
	Franklin	1.1%	4.7%	14.3%	11.3%	26.0%	22.1%	17.7%	2.9%
	Greene	1.0%	4.8%	14.6%	10.5%	25.5%	21.3%	18.8%	3.5%
	Grundy	1.0%	4.7%	14.8%	10.8%	26.4%	22.4%	17.0%	2.8%
	Guthrie	1.1%	4.4%	14.2%	10.4%	25.7%	23.3%	17.9%	3.0%
	Hamilton	1.3%	5.1%	14.4%	11.3%	28.3%	21.2%	15.8%	2.5%
	Hancock	1.3%	5.2%	15.7%	11.4%	27.1%	20.9%	15.9%	2.6%
	Hardin	1.1%	4.6%	13.7%	13.2%	25.3%	20.9%	17.8%	3.4%
	Harrison	1.1%	5.2%	15.4%	11.5%	27.3%	20.9%	15.7%	2.8%
	Humboldt	1.1%	4.7%	14.6%	11.0%	25.8%	21.5%	18.4%	2.9%
	Iowa	1.2%	5.3%	15.2%	10.6%	28.9%	20.9%	15.1%	2.9%
	Jefferson	1.1%	4.8%	14.3%	11.7%	30.3%	23.5%	12.2%	2.1%
	Keokuk	1.2%	4.9%	15.2%	11.3%	26.5%	20.5%	17.2%	3.2%
	Kossuth	1.1%	5.0%	15.5%	11.1%	26.0%	21.7%	16.7%	2.9%
	Louisa	1.4%	5.5%	15.7%	12.8%	29.4%	20.6%	12.6%	2.1%
	Lyon	1.5%	5.7%	16.9%	12.2%	25.8%	19.7%	15.6%	2.7%
Madison	1.3%	5.5%	15.6%	11.7%	28.3%	21.2%	13.7%	2.7%	
Mills	1.1%	5.1%	15.8%	12.0%	30.4%	22.2%	11.6%	1.7%	

Source: Population Division, U.S. Census Bureau and SEER STAT

Average Annual Population Distribution by Age: 1990-2000 (continued)

		County	% <1	% 1-4	% 5-14	% 15-24	% 25-44	% 45-64	% 65-84	% 85 +
Counties with Average Population 10,000 – 20,000 (continued)	Mitchell	1.2%	5.0%	15.2%	10.9%	24.9%	20.8%	18.1%	3.8%	
	Monona	1.1%	4.3%	13.8%	10.2%	24.2%	22.0%	20.3%	4.0%	
	Montgomery	1.1%	4.9%	14.3%	11.0%	26.7%	20.7%	17.8%	3.5%	
	O'Brien	1.1%	5.0%	14.9%	11.9%	25.5%	20.7%	17.5%	3.4%	
	Page	1.1%	4.5%	13.6%	12.0%	27.0%	21.1%	17.5%	3.1%	
	Palo Alto	1.1%	4.7%	14.6%	13.3%	24.2%	21.0%	17.7%	3.5%	
	Poweshiek	1.1%	4.7%	13.4%	16.8%	26.0%	20.5%	14.8%	2.7%	
	Sac	1.2%	4.8%	14.8%	10.7%	24.9%	21.1%	18.9%	3.6%	
	Shelby	1.2%	5.0%	15.5%	10.9%	26.0%	20.9%	17.6%	3.0%	
	Tama	1.3%	5.2%	14.9%	11.7%	26.1%	21.6%	16.2%	3.0%	
	Union	1.1%	4.8%	14.0%	12.9%	26.9%	21.1%	16.3%	2.9%	
	Winnebago	1.1%	4.8%	14.1%	13.9%	26.0%	20.4%	16.4%	3.2%	
	Wright	1.2%	4.8%	13.9%	10.6%	25.8%	21.5%	18.5%	3.6%	
	Total	1.2%	4.9%	14.8%	11.8%	26.7%	21.4%	16.3%	2.9%	
	Counties with Average Population > 20,000	Benton	1.3%	5.6%	16.1%	11.6%	29.6%	20.0%	13.8%	2.1%
Boone		1.2%	5.0%	14.2%	12.1%	28.9%	21.2%	14.4%	2.9%	
Bremer		1.1%	4.6%	14.3%	16.5%	25.7%	21.7%	13.8%	2.4%	
Buchanan		1.5%	5.7%	17.0%	12.9%	27.5%	20.2%	13.2%	1.8%	
Buena Vista		1.2%	5.0%	14.6%	16.1%	26.1%	19.0%	15.4%	2.7%	
Carroll		1.2%	5.5%	16.4%	12.1%	26.8%	19.4%	15.8%	2.7%	
Cerro Gordo		1.2%	5.0%	13.8%	13.0%	28.6%	21.0%	15.0%	2.4%	
Clinton		1.3%	5.4%	14.9%	12.6%	28.6%	21.3%	14.0%	2.0%	
Des Moines		1.3%	5.1%	14.3%	12.7%	28.3%	22.0%	14.2%	2.3%	
Fayette		1.2%	5.1%	14.6%	13.0%	26.1%	20.9%	16.4%	2.7%	
Henry		1.2%	5.0%	14.2%	13.8%	30.2%	20.2%	13.1%	2.4%	
Jackson		1.2%	5.2%	15.6%	12.1%	27.4%	21.6%	14.6%	2.3%	
Jasper		1.3%	5.0%	14.4%	11.7%	29.3%	22.0%	14.3%	2.0%	
Jones		1.2%	4.7%	14.3%	12.8%	30.3%	20.9%	13.7%	2.1%	
Lee		1.2%	5.0%	14.4%	12.2%	28.7%	22.0%	14.4%	2.2%	
Mahaska		1.3%	5.4%	14.7%	13.6%	28.1%	19.8%	14.7%	2.3%	
Marion		1.2%	5.1%	14.6%	14.9%	27.6%	20.2%	13.9%	2.3%	
Marshall		1.2%	5.0%	14.1%	12.3%	28.0%	22.0%	15.1%	2.3%	
Muscatine		1.4%	5.6%	15.6%	13.4%	30.4%	20.5%	11.3%	1.8%	
Plymouth		1.3%	5.5%	16.5%	13.1%	27.1%	20.2%	14.0%	2.3%	
Sioux		1.3%	5.7%	16.5%	18.6%	24.9%	17.9%	13.0%	2.0%	
Story		1.2%	4.3%	10.8%	31.3%	27.3%	15.3%	8.4%	1.5%	
Wapello		1.3%	4.9%	13.4%	13.2%	27.5%	21.5%	15.8%	2.4%	
Washington	1.4%	5.5%	15.0%	11.4%	28.2%	20.2%	15.3%	3.0%		
Webster	1.3%	5.4%	14.3%	13.7%	27.0%	20.5%	15.1%	2.6%		
Winneshiek	1.0%	4.7%	13.6%	20.9%	25.4%	18.8%	13.4%	2.3%		
Total	1.2%	5.1%	14.4%	15.2%	27.9%	20.2%	13.7%	2.2%		
MSA Counties	Black Hawk	1.2%	5.1%	13.7%	18.7%	27.4%	20.0%	12.1%	1.8%	
	Dallas	1.5%	6.1%	15.7%	11.3%	32.3%	20.1%	11.2%	1.8%	
	Dubuque	1.3%	5.4%	14.9%	15.0%	28.7%	20.3%	12.5%	2.0%	
	Johnson	1.3%	4.7%	11.0%	26.9%	33.1%	15.4%	6.5%	1.0%	
	Linn	1.4%	5.5%	14.1%	14.5%	31.9%	20.4%	10.7%	1.5%	
	Polk	1.5%	5.9%	14.0%	14.0%	33.6%	19.6%	10.0%	1.4%	
	Pottawattamie	1.4%	5.5%	15.0%	13.4%	29.9%	21.1%	12.1%	1.5%	
	Scott	1.4%	5.8%	15.4%	14.0%	31.3%	20.5%	10.3%	1.3%	
	Warren	1.3%	5.6%	15.8%	14.6%	30.1%	21.1%	9.8%	1.6%	
	Woodbury	1.4%	6.0%	15.6%	14.3%	29.4%	19.1%	12.2%	1.8%	
Total	1.4%	5.6%	14.3%	15.6%	31.4%	19.7%	10.6%	1.5%		

Aging Trend in Iowa: Percent of Iowans Age 65 and Older, by County Group



Estimated Year 2000 US Standard Population

Age Range	Population	Percent of Total
<1	13,818	1.4%
01-04	55,317	5.5%
05-09	72,533	7.3%
10-14	73,032	7.3%
15-19	72,169	7.2%
20-24	66,478	6.6%
25-29	64,529	6.5%
30-34	71,044	7.1%
35-39	80,762	8.1%
40-44	81,851	8.2%
45-49	72,118	7.2%
50-54	62,716	6.3%
55-59	48,454	4.8%
60-64	38,793	3.9%
65-69	34,264	3.4%
70-74	31,773	3.2%
75-79	26,999	2.7%
80-84	17,842	1.8%
85+	15,508	1.6%
Total	1,000,000	100.0%

Source: Population Division, U.S. Census Bureau and SEER STAT