

Injury Mortality

Transportation-related mortality accounted for 4,371 deaths in Iowa from 1996 to 2004, 91% of which were motor vehicle fatalities. The rates for these fatalities are highest in the rural counties and lowest in the most urban counties. Rates for suicide and firearm mortality are also highest in the most rural counties. Falls mortality tends to be highest in rural counties, but the age-adjusted rates are more similar for the county groups. Homicide rates are consistently higher in the urban counties. Poisoning mortality rates have shown variation across years for each county group. The state's mortality rate from burns has decreased since 1979. In general, drowning deaths have consistently decreased across all county levels since 1979. Deaths from all other unintentional injuries are difficult to compare for 1999-2004 and preceding years due to changes in the mortality classification systems (discussed below).

HIGHLIGHTS...

- ✓ Injuries are the leading cause of death in persons 1-34 years of age.
- ✓ Motor vehicle deaths account for 91% of all transportation deaths in Iowa.
- ✓ Crude mortality rates from motor vehicle accidents, suicide, firearms, and falls are highest in rural counties.

Beginning in 1999, the tenth revision of the International Classification of Diseases (ICD-10) replaced the ninth version (ICD-9) as the standard mortality classification system. ICD-10 is more detailed than ICD-9; ICD-10 has about 8,000 categories while ICD-9 has about 5,000 categories. Also, some of the coding rules and rules for selecting the underlying cause of death have changed. Because of the new classification system, observed changes in mortality rates between 1999 and 2004 and preceding years could be due, in part, to changes in the method of mortality classification. Therefore, one should compare rates from 1999-2004 and preceding years with caution. The ICD-9 and ICD-10 codes used for each type of Injury Mortality are listed in Appendix III.

The source of this mortality data is the cause of death data obtained from death certificates filed at the Iowa Department of Public Health. Analysis was done by the State Health Registry of Iowa and the Center for Public Health Statistics at the University of Iowa. Age-adjusted rates were calculated using the Year 2000 U.S. population distribution.

All Transportation Mortality 1996-2004

	Counties with Average Population < 10,000				Counties with Average Population 10,000 - 20,000				Counties with Average Population > 20,000				MSA Counties				
	County	#	Crude ¹ (Rank ³)	Adjusted ^{1,2} (Rank ³)	County	#	Crude ¹ (Rank ³)	Adjusted ^{1,2} (Rank ³)	County	#	Crude ¹ (Rank ³)	Adjusted ^{1,2} (Rank ³)	County	#	Crude ¹ (Rank ³)	Adjusted ^{1,2} (Rank ³)	
Counties with Average Population < 10,000	Adair	24	32.7 (08)	32.5 (08)	Monona	31	34.7 (05)	37.3 (02)	Monroe	21	29.2 (14)	31.2 (10)	Osceola	14	22.3 (42)	23.9 (31)	
	Adams	12	30.0 (12)	28.9 (11)	Monroe	21	29.2 (14)	31.2 (10)	Osceola	14	22.3 (42)	23.9 (31)	Palo Alto	21	23.2 (37)	22.8 (40)	
	Audubon	14	23.1 (38)	19.4 (57)	Osceola	14	22.3 (42)	23.9 (31)	Palo Alto	21	23.2 (37)	22.8 (40)	Pocahontas	19	24.6 (29)	22.5 (42)	
	Clarke	17	21.0 (51)	23.3 (33)	Palo Alto	21	23.2 (37)	22.8 (40)	Pocahontas	19	24.6 (29)	22.5 (42)	Ringgold	6	12.3 (92)	9.0 (98)	
	Davis	28	36.4 (03)	35.0 (05)	Pocahontas	19	24.6 (29)	22.5 (42)	Ringgold	6	12.3 (92)	9.0 (98)	Taylor	16	25.8 (25)	28.0 (14)	
	Decatur	23	29.8 (13)	26.7 (20)	Ringgold	6	12.3 (92)	9.0 (98)	Taylor	16	25.8 (25)	28.0 (14)	Van Buren	25	35.8 (04)	37.0 (04)	
	Fremont	15	21.0 (50)	21.2 (46)	Taylor	16	25.8 (25)	28.0 (14)	Van Buren	25	35.8 (04)	37.0 (04)	Wayne	29	47.8 (01)	51.0 (01)	
	Howard	14	15.7 (81)	16.5 (75)	Van Buren	25	35.8 (04)	37.0 (04)	Wayne	29	47.8 (01)	51.0 (01)	Worth	14	19.8 (57)	19.0 (59)	
	Ida	18	25.7 (26)	26.9 (19)	Wayne	29	47.8 (01)	51.0 (01)	Worth	14	19.8 (57)	19.0 (59)	Total	388	27.2	27.0	
	Lucas	27	31.8 (10)	28.7 (12)	Worth	14	19.8 (57)	19.0 (59)	Total	388	27.2	27.0					
					Total	388	27.2	27.0									
	Counties with Average Population 10,000 - 20,000	Allamakee	30	22.9 (40)	24.3 (29)	Hardin	30	17.8 (68)	16.9 (72)	Humboldt	18	19.4 (59)	20.6 (49)	Iowa	35	24.8 (28)	26.4 (22)
		Appanoose	27	22.0 (43)	23.3 (35)	Hardin	30	17.8 (68)	16.9 (72)	Humboldt	18	19.4 (59)	20.6 (49)	Iowa	35	24.8 (28)	26.4 (22)
Butler		24	17.5 (70)	18.2 (64)	Humboldt	18	19.4 (59)	20.6 (49)	Iowa	35	24.8 (28)	26.4 (22)	Jefferson	30	20.5 (53)	20.5 (50)	
Calhoun		16	16.1 (77)	17.1 (69)	Iowa	35	24.8 (28)	26.4 (22)	Jefferson	30	20.5 (53)	20.5 (50)	Keokuk	39	38.1 (02)	37.3 (03)	
Cass		32	24.3 (31)	26.2 (23)	Jefferson	30	20.5 (53)	20.5 (50)	Keokuk	39	38.1 (02)	37.3 (03)	Kossuth	35	22.9 (41)	22.8 (39)	
Cedar		41	25.1 (27)	24.3 (30)	Keokuk	39	38.1 (02)	37.3 (03)	Kossuth	35	22.9 (41)	22.8 (39)	Louisa	30	27.4 (17)	27.4 (15)	
Cherokee		31	26.6 (21)	26.1 (25)	Kossuth	35	22.9 (41)	22.8 (39)	Louisa	30	27.4 (17)	27.4 (15)	Lyon	18	17.0 (73)	15.4 (81)	
Chickasaw		40	34.1 (06)	34.0 (06)	Louisa	30	27.4 (17)	27.4 (15)	Lyon	18	17.0 (73)	15.4 (81)	Mitchell	28	28.6 (15)	26.0 (27)	
Clay		19	12.2 (93)	12.1 (92)	Lyon	18	17.0 (73)	15.4 (81)	Mitchell	28	28.6 (15)	26.0 (27)	Montgomery	21	20.0 (54)	20.4 (52)	
Clayton		51	30.4 (11)	31.9 (09)	Mitchell	28	28.6 (15)	26.0 (27)	Montgomery	21	20.0 (54)	20.4 (52)	O'Brien	23	17.0 (74)	17.4 (68)	
Crawford		40	26.3 (22)	25.6 (28)	Montgomery	21	20.0 (54)	20.4 (52)	O'Brien	23	17.0 (74)	17.4 (68)	Page	33	21.7 (47)	19.7 (56)	
Delaware		35	21.2 (49)	20.3 (53)	O'Brien	23	17.0 (74)	17.4 (68)	Page	33	21.7 (47)	19.7 (56)	Poweshiek	41	24.1 (32)	22.1 (43)	
Dickinson		32	21.8 (44)	20.4 (51)	Page	33	21.7 (47)	19.7 (56)	Poweshiek	41	24.1 (32)	22.1 (43)	Sac	33	32.0 (09)	28.4 (13)	
Emmet		27	27.3 (19)	26.1 (24)	Poweshiek	41	24.1 (32)	22.1 (43)	Sac	33	32.0 (09)	28.4 (13)	Shelby	18	15.3 (83)	15.7 (78)	
Floyd		29	19.2 (61)	18.8 (62)	Sac	33	32.0 (09)	28.4 (13)	Shelby	18	15.3 (83)	15.7 (78)	Tama	53	32.8 (07)	33.8 (07)	
Franklin		25	25.8 (24)	23.1 (38)	Shelby	18	15.3 (83)	15.7 (78)	Tama	53	32.8 (07)	33.8 (07)	Union	27	24.5 (30)	26.4 (21)	
Greene		14	15.2 (84)	14.0 (85)	Tama	53	32.8 (07)	33.8 (07)	Union	27	24.5 (30)	26.4 (21)	Winnebago	29	27.7 (16)	27.3 (16)	
Hamilton		32	21.8 (45)	21.4 (45)	Union	27	24.5 (30)	26.4 (21)	Winnebago	29	27.7 (16)	27.3 (16)	Wright	35	27.3 (18)	27.0 (18)	
Hancock		17	15.8 (80)	15.1 (83)	Winnebago	29	27.7 (16)	27.3 (16)	Wright	35	27.3 (18)	27.0 (18)	Total	1,138	23.2	22.9	
				Wright	35	27.3 (18)	27.0 (18)	Total	1,138	23.2	22.9						
Counties with Average Population > 20,000	Boone	49	20.8 (52)	21.2 (47)	Lee	74	21.7 (46)	21.5 (44)	Mahaska	32	16.0 (78)	15.9 (77)					
	Buchanan	44	23.3 (36)	23.1 (37)	Lee	74	21.7 (46)	21.5 (44)	Mahaska	32	16.0 (78)	15.9 (77)					
	Buena Vista	31	16.9 (75)	15.4 (80)	Mahaska	32	16.0 (78)	15.9 (77)	Marion	50	17.3 (71)	16.4 (76)					
	Carroll	41	21.3 (48)	21.0 (48)	Marion	50	17.3 (71)	16.4 (76)	Marshall	53	15.0 (85)	15.1 (82)					
	Cerro Gordo	71	17.1 (72)	17.0 (70)	Marshall	53	15.0 (85)	15.1 (82)	Muscatine	66	17.6 (69)	17.6 (67)					
	Clinton	89	19.7 (58)	19.2 (58)	Muscatine	66	17.6 (69)	17.6 (67)	Plymouth	42	18.8 (64)	19.9 (54)					
	Clinton	89	19.7 (58)	19.2 (58)	Plymouth	42	18.8 (64)	19.9 (54)	Sioux	57	20.0 (55)	18.1 (65)					
	Des Moines	52	13.7 (87)	13.3 (91)	Sioux	57	20.0 (55)	18.1 (65)	Wapello	60	18.5 (66)	18.8 (61)					
	Fayette	46	23.4 (35)	22.6 (41)	Wapello	60	18.5 (66)	18.8 (61)	Webster	55	15.4 (82)	14.6 (84)					
	Henry	36	19.8 (56)	18.8 (63)	Webster	55	15.4 (82)	14.6 (84)	Winneshiek	36	18.8 (63)	16.7 (74)					
	Jackson	43	23.6 (33)	23.7 (32)	Winneshiek	36	18.8 (63)	16.7 (74)	Total	1,080	18.4	17.9					
	Jasper	53	15.9 (79)	15.5 (79)	Total	1,080	18.4	17.9									
MSA Counties	Benton	31	13.5 (88)	13.5 (88)	Linn	175	10.2 (98)	10.2 (97)	Madison	24	18.9 (62)	19.7 (55)					
	Black Hawk	158	13.8 (86)	13.5 (87)	Linn	175	10.2 (98)	10.2 (97)	Madison	24	18.9 (62)	19.7 (55)					
	Bremer	38	18.1 (67)	17.0 (71)	Madison	24	18.9 (62)	19.7 (55)	Mills	30	23.0 (39)	23.1 (36)					
	Dallas	61	16.3 (76)	16.7 (73)	Mills	30	23.0 (39)	23.1 (36)	Polk	397	11.7 (94)	11.9 (93)					
	Dubuque	87	10.8 (97)	10.4 (96)	Polk	397	11.7 (94)	11.9 (93)	Pottawattamie	106	13.5 (89)	13.5 (89)					
	Grundy	29	26.1 (23)	27.2 (17)	Pottawattamie	106	13.5 (89)	13.5 (89)	Scott	157	11.0 (96)	11.0 (94)					
	Guthrie	19	18.6 (65)	17.7 (66)	Scott	157	11.0 (96)	11.0 (94)	Story	92	12.9 (91)	13.7 (86)					
	Harrison	33	23.5 (34)	23.3 (34)	Story	92	12.9 (91)	13.7 (86)	Warren	41	11.2 (95)	10.9 (95)					
	Johnson	77	7.7 (99)	7.6 (99)	Warren	41	11.2 (95)	10.9 (95)	Washington	36	19.2 (60)	19.0 (60)					
	Jones	49	26.7 (20)	26.0 (26)	Washington	36	19.2 (60)	19.0 (60)	Woodbury	125	13.4 (90)	13.3 (90)					
					Woodbury	125	13.4 (90)	13.3 (90)	Total	1,765	12.5	12.3					
					Total	1,765	12.5	12.3									
	State Total	4,371	16.6	16.1													

¹Rates per 100,000 Population

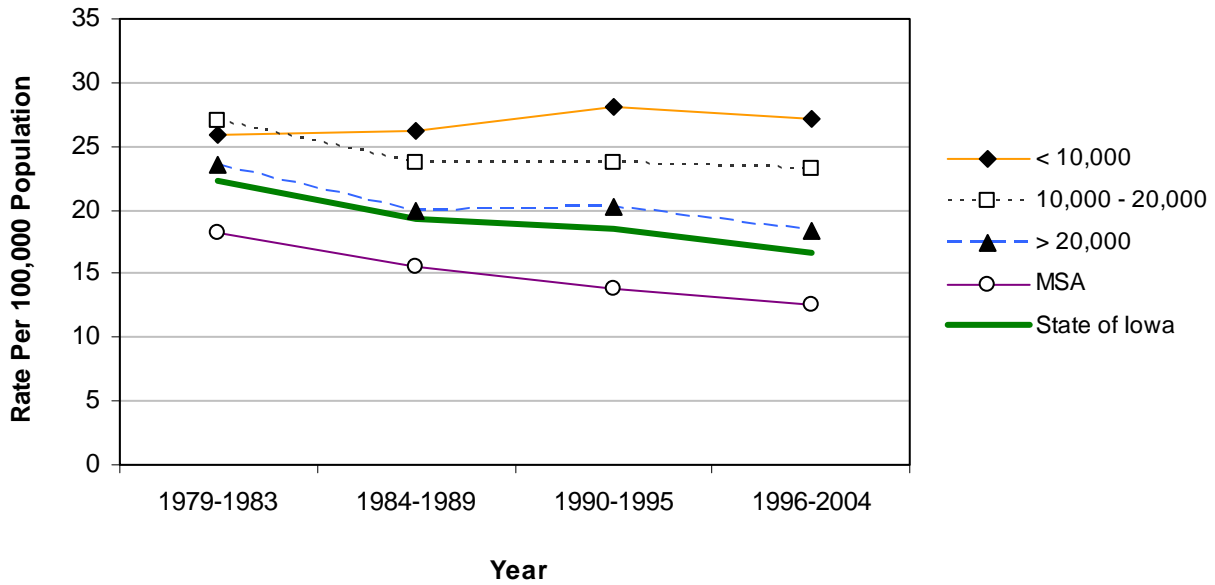
²Adjusted to Year 2000 Population

³Rank among 99 counties

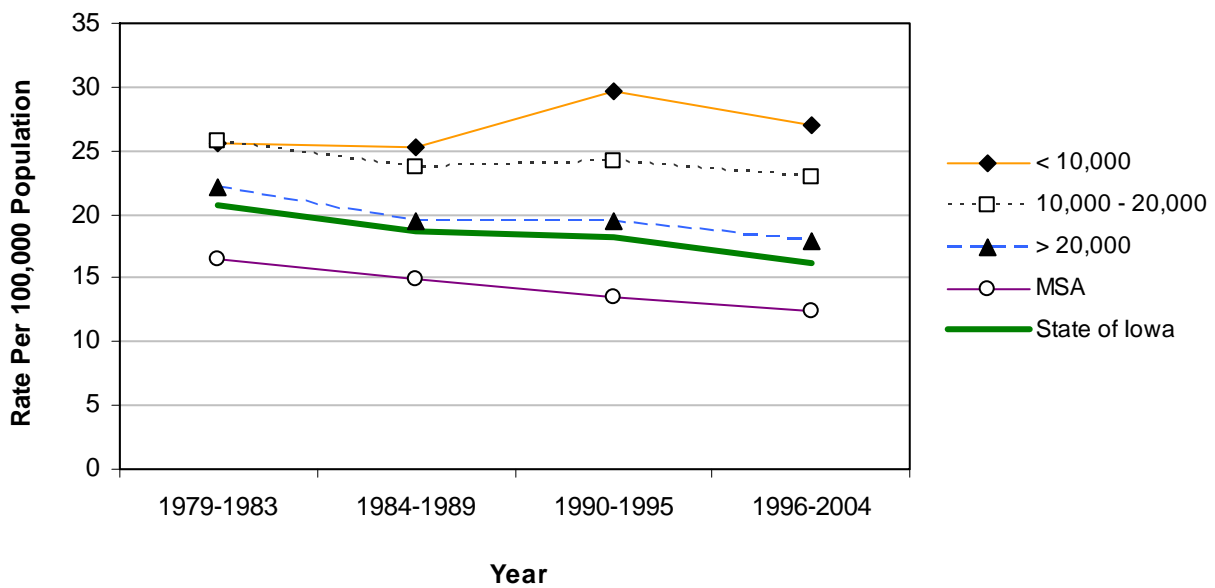
Source: State Health Registry of Iowa

All Transportation Mortality by County Group 1979-2004

Crude Rates



Age-Adjusted Rates



Motor Vehicle Traffic Mortality 1996-2004

	Average Population < 10,000				Average Population 10,000 - 20,000				Average Population > 20,000				MSA Counties				
	County	#	Crude ¹ (Rank ³)	Adjusted ^{1,2} (Rank ³)	County	#	Crude ¹ (Rank ³)	Adjusted ^{1,2} (Rank ³)	County	#	Crude ¹ (Rank ³)	Adjusted ^{1,2} (Rank ³)	County	#	Crude ¹ (Rank ³)	Adjusted ^{1,2} (Rank ³)	
Counties with Average Population < 10,000	Adair	23	31.3 (07)	31.1 (07)	Monona	29	32.4 (06)	35.7 (03)	Monroe	17	23.7 (24)	25.2 (16)	Osceola	14	22.3 (29)	23.9 (22)	
	Adams	10	25.0 (17)	24.5 (20)	Monroe	17	23.7 (24)	25.2 (16)	Osceola	14	22.3 (29)	23.9 (22)	Palo Alto	18	19.9 (47)	20.1 (43)	
	Audubon	12	19.8 (50)	18.0 (56)	Osceola	14	22.3 (29)	23.9 (22)	Palo Alto	18	19.9 (47)	20.1 (43)	Pocahontas	18	23.3 (26)	21.0 (39)	
	Clarke	17	21.0 (39)	23.3 (28)	Palo Alto	18	19.9 (47)	20.1 (43)	Pocahontas	18	23.3 (26)	21.0 (39)	Ringgold	6	12.3 (88)	9.0 (97)	
	Davis	26	33.8 (03)	32.2 (06)	Pocahontas	18	23.3 (26)	21.0 (39)	Ringgold	6	12.3 (88)	9.0 (97)	Taylor	15	24.1 (20)	26.5 (12)	
	Decatur	22	28.5 (11)	25.7 (14)	Ringgold	6	12.3 (88)	9.0 (97)	Taylor	15	24.1 (20)	26.5 (12)	Van Buren	23	32.9 (05)	33.4 (04)	
	Fremont	14	19.6 (52)	19.9 (47)	Taylor	15	24.1 (20)	26.5 (12)	Van Buren	23	32.9 (05)	33.4 (04)	Wayne	26	42.8 (01)	46.2 (01)	
	Howard	13	14.6 (80)	14.9 (73)	Van Buren	23	32.9 (05)	33.4 (04)	Wayne	26	42.8 (01)	46.2 (01)	Worth	13	18.4 (58)	17.6 (58)	
	Ida	15	21.4 (37)	23.6 (27)	Wayne	26	42.8 (01)	46.2 (01)	Worth	13	18.4 (58)	17.6 (58)	Total	353	24.7	24.8	
	Lucas	22	25.9 (14)	24.7 (19)	Worth	13	18.4 (58)	17.6 (58)	Total	353	24.7	24.8					
					Total	353	24.7	24.8									
	Counties with Average Population 10,000 - 20,000	Allamakee	29	22.1 (33)	23.7 (24)	Hardin	28	16.7 (66)	15.5 (67)	Humboldt	16	17.2 (63)	17.4 (59)	Iowa	32	22.7 (27)	24.5 (21)
		Appanoose	26	21.2 (38)	22.7 (31)	Hardin	28	16.7 (66)	15.5 (67)	Humboldt	16	17.2 (63)	17.4 (59)	Jefferson	29	19.8 (48)	20.0 (46)
Butler		21	15.3 (72)	16.6 (65)	Humboldt	16	17.2 (63)	17.4 (59)	Iowa	32	22.7 (27)	24.5 (21)	Keokuk	38	37.1 (02)	36.8 (02)	
Calhoun		15	15.1 (74)	16.0 (66)	Iowa	32	22.7 (27)	24.5 (21)	Jefferson	29	19.8 (48)	20.0 (46)	Kossuth	34	22.2 (31)	21.9 (34)	
Cass		29	22.0 (35)	23.7 (25)	Jefferson	29	19.8 (48)	20.0 (46)	Keokuk	38	37.1 (02)	36.8 (02)	Louisa	26	23.8 (23)	23.7 (26)	
Cedar		39	23.9 (22)	23.0 (30)	Keokuk	38	37.1 (02)	36.8 (02)	Kossuth	34	22.2 (31)	21.9 (34)	Lyon	18	17.0 (64)	15.4 (68)	
Cherokee		28	24.0 (21)	23.9 (23)	Kossuth	34	22.2 (31)	21.9 (34)	Louisa	26	23.8 (23)	23.7 (26)	Mitchell	25	25.5 (16)	23.1 (29)	
Chickasaw		39	33.2 (04)	33.3 (05)	Louisa	26	23.8 (23)	23.7 (26)	Lyon	18	17.0 (64)	15.4 (68)	Montgomery	21	20.0 (46)	20.4 (41)	
Clay		18	11.5 (92)	11.4 (91)	Mitchell	25	25.5 (16)	23.1 (29)	Montgomery	21	20.0 (46)	20.4 (41)	O'Brien	20	14.8 (79)	15.3 (70)	
Clayton		48	28.6 (10)	30.0 (09)	Montgomery	21	20.0 (46)	20.4 (41)	O'Brien	20	14.8 (79)	15.3 (70)	Page	30	19.7 (51)	17.8 (57)	
Crawford		33	21.7 (36)	21.8 (36)	O'Brien	20	14.8 (79)	15.3 (70)	Page	30	19.7 (51)	17.8 (57)	Poweshiek	38	22.3 (28)	20.9 (40)	
Delaware		34	20.6 (42)	19.7 (48)	Page	30	19.7 (51)	17.8 (57)	Poweshiek	38	22.3 (28)	20.9 (40)	Sac	31	30.1 (08)	27.1 (11)	
Dickinson		30	20.4 (43)	18.6 (53)	Poweshiek	38	22.3 (28)	20.9 (40)	Sac	31	30.1 (08)	27.1 (11)	Shelby	16	13.6 (83)	14.2 (79)	
Emmet		22	22.2 (32)	21.7 (37)	Sac	31	30.1 (08)	27.1 (11)	Shelby	16	13.6 (83)	14.2 (79)	Tama	47	29.0 (09)	30.2 (08)	
Floyd		28	18.5 (57)	18.0 (55)	Shelby	16	13.6 (83)	14.2 (79)	Tama	47	29.0 (09)	30.2 (08)	Union	26	23.6 (25)	25.5 (15)	
Franklin		24	24.7 (19)	22.0 (33)	Tama	47	29.0 (09)	30.2 (08)	Union	26	23.6 (25)	25.5 (15)	Winnebago	28	26.7 (12)	26.4 (13)	
Greene		13	14.1 (82)	12.9 (84)	Union	26	23.6 (25)	25.5 (15)	Winnebago	28	26.7 (12)	26.4 (13)	Wright	32	25.0 (18)	24.7 (18)	
Hamilton		30	20.4 (44)	20.1 (45)	Winnebago	28	26.7 (12)	26.4 (13)	Wright	32	25.0 (18)	24.7 (18)	Total	1,057	21.5	21.3	
Hancock	16	14.8 (78)	14.2 (80)	Wright	32	25.0 (18)	24.7 (18)	Total	1,057	21.5	21.3						
				Total	1,057	21.5	21.3										
Counties with Average Population > 20,000	Boone	44	18.7 (55)	19.0 (50)	Lee	59	17.3 (60)	17.3 (62)	Mahaska	30	15.0 (75)	14.9 (74)	Marion	47	16.3 (69)	15.3 (71)	
	Buchanan	36	19.0 (53)	18.8 (52)	Lee	59	17.3 (60)	17.3 (62)	Mahaska	30	15.0 (75)	14.9 (74)	Marion	47	16.3 (69)	15.3 (71)	
	Buena Vista	30	16.4 (68)	14.9 (72)	Mahaska	30	15.0 (75)	14.9 (74)	Marion	47	16.3 (69)	15.3 (71)	Marshall	45	12.7 (86)	12.9 (85)	
	Carroll	39	20.3 (45)	20.2 (42)	Marion	47	16.3 (69)	15.3 (71)	Marshall	45	12.7 (86)	12.9 (85)	Muscatine	65	17.3 (61)	17.3 (60)	
	Cerro Gordo	62	14.9 (77)	14.7 (77)	Marshall	45	12.7 (86)	12.9 (85)	Muscatine	65	17.3 (61)	17.3 (60)	Plymouth	40	17.9 (59)	19.1 (49)	
	Clinton	78	17.3 (62)	16.8 (64)	Muscatine	65	17.3 (61)	17.3 (60)	Plymouth	40	17.9 (59)	19.1 (49)	Sioux	54	18.9 (54)	17.0 (63)	
	Des Moines	43	11.4 (93)	10.9 (92)	Plymouth	40	17.9 (59)	19.1 (49)	Sioux	54	18.9 (54)	17.0 (63)	Wapello	49	15.1 (73)	15.3 (69)	
	Fayette	41	20.8 (41)	20.1 (44)	Sioux	54	18.9 (54)	17.0 (63)	Wapello	49	15.1 (73)	15.3 (69)	Webster	51	14.3 (81)	13.4 (83)	
	Henry	36	19.8 (49)	18.8 (51)	Wapello	49	15.1 (73)	15.3 (69)	Webster	51	14.3 (81)	13.4 (83)	Winneshiek	32	16.7 (65)	14.8 (75)	
	Jackson	38	20.9 (40)	21.2 (38)	Webster	51	14.3 (81)	13.4 (83)	Winneshiek	32	16.7 (65)	14.8 (75)	Total	969	16.5	16.0	
	Jasper	50	15.0 (76)	14.8 (76)	Winneshiek	32	16.7 (65)	14.8 (75)	Total	969	16.5	16.0					
					Total	969	16.5	16.0									
MSA Counties	Benton	29	12.7 (87)	12.6 (88)	Linn	155	9.0 (97)	9.0 (96)	Madison	21	16.6 (67)	17.3 (61)	Mills	29	22.2 (30)	22.5 (32)	
	Black Hawk	149	13.0 (85)	12.8 (86)	Linn	155	9.0 (97)	9.0 (96)	Madison	21	16.6 (67)	17.3 (61)	Mills	29	22.2 (30)	22.5 (32)	
	Bremer	33	15.7 (70)	14.6 (78)	Madison	21	16.6 (67)	17.3 (61)	Mills	29	22.2 (30)	22.5 (32)	Polk	356	10.5 (94)	10.7 (93)	
	Dallas	50	13.4 (84)	13.7 (82)	Mills	29	22.2 (30)	22.5 (32)	Polk	356	10.5 (94)	10.7 (93)	Pottawattamie	93	11.8 (91)	11.8 (90)	
	Dubuque	67	8.3 (98)	8.1 (98)	Polk	356	10.5 (94)	10.7 (93)	Pottawattamie	93	11.8 (91)	11.8 (90)	Scott	140	9.8 (96)	9.8 (95)	
	Grundy	29	26.1 (13)	27.2 (10)	Pottawattamie	93	11.8 (91)	11.8 (90)	Scott	140	9.8 (96)	9.8 (95)	Story	85	11.9 (90)	12.7 (87)	
	Guthrie	16	15.6 (71)	13.9 (81)	Scott	140	9.8 (96)	9.8 (95)	Story	85	11.9 (90)	12.7 (87)	Warren	38	10.4 (95)	10.1 (94)	
	Harrison	31	22.1 (34)	21.8 (35)	Story	85	11.9 (90)	12.7 (87)	Warren	38	10.4 (95)	10.1 (94)	Washington	35	18.7 (56)	18.6 (54)	
	Johnson	70	7.0 (99)	7.0 (99)	Warren	38	10.4 (95)	10.1 (94)	Washington	35	18.7 (56)	18.6 (54)	Woodbury	113	12.1 (89)	12.0 (89)	
	Jones	47	25.6 (15)	24.8 (17)	Washington	35	18.7 (56)	18.6 (54)	Woodbury	113	12.1 (89)	12.0 (89)	Total	1,586	11.3	11.1	
					Woodbury	113	12.1 (89)	12.0 (89)	Total	1,586	11.3	11.1					
					Total	1,586	11.3	11.1									
State Total	3,965	15.1	14.6														

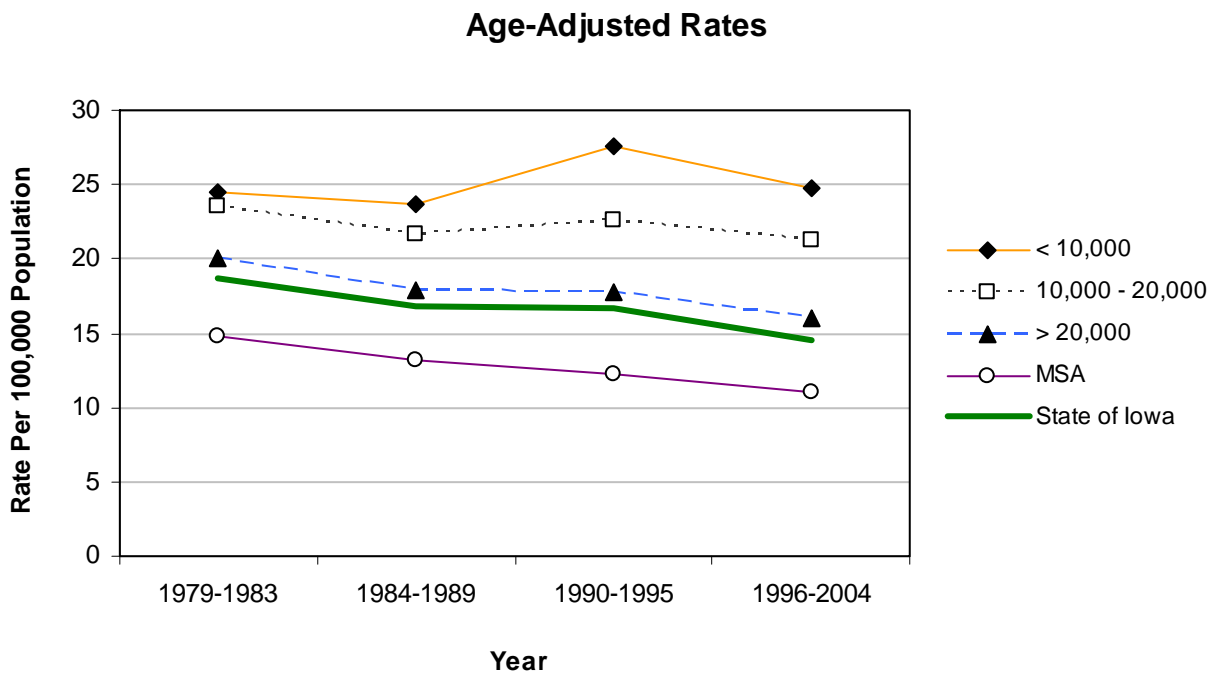
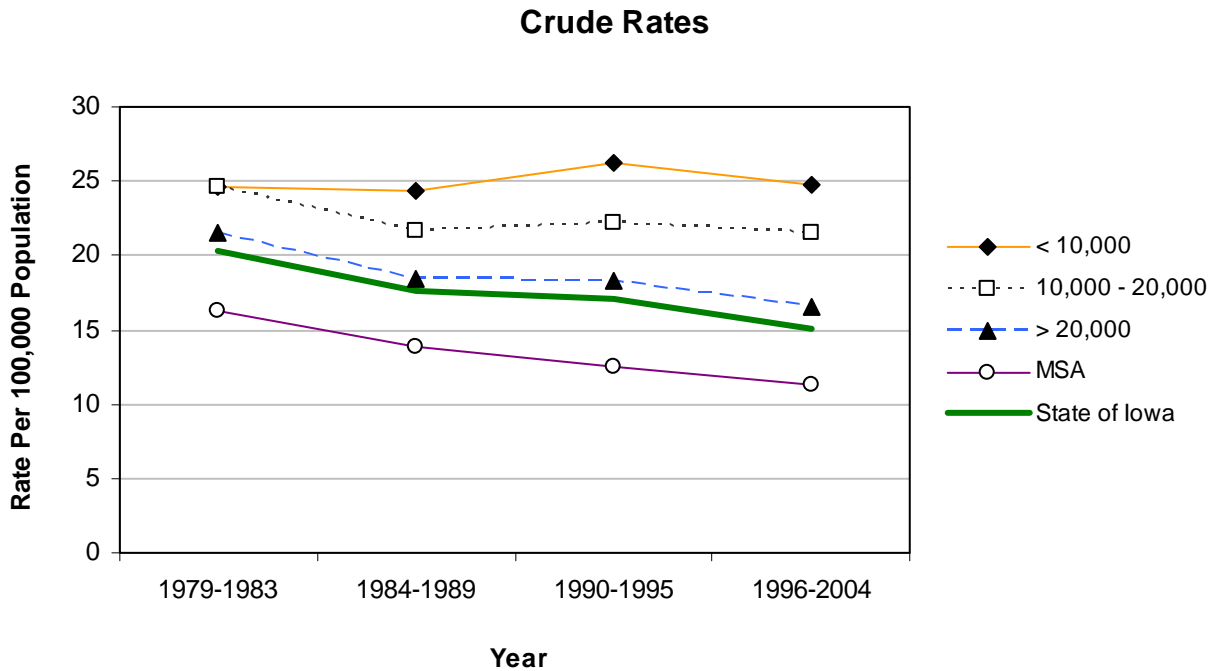
¹Rates per 100,000 Population

²Adjusted to Year 2000 Population

³Rank among 99 counties

Source: State Health Registry of Iowa

Motor Vehicle Traffic Mortality by County Group 1979-2004



Suicides 1996-2004

	County	#	Crude ¹	Adjusted ^{1,2}	County	#	Crude ¹	Adjusted ^{1,2}	
Counties with Average Population < 10,000	Adair	9	12.3	12.4	Monona	13	14.5	13.1	
	Adams	*	*	*	Monroe	17	23.7	24.5	
	Audubon	6	9.9	8.5	Osceola	12	19.1	19.6	
	Clarke	13	16.0	15.9	Palo Alto	8	8.8	8.7	
	Davis	10	13.0	12.3	Pocahontas	14	18.1	18.2	
	Decatur	8	10.4	9.8	Ringgold	7	14.4	14.6	
	Fremont	7	9.8	11.2	Taylor	10	16.1	14.4	
	Howard	12	13.5	14.9	Van Buren	14	20.1	18.7	
	Ida	5	7.1	7.3	Wayne	5	8.2	7.3	
	Lucas	10	11.8	11.8	Worth	11	15.5	16.2	
					Total	191-195	13.4-13.6	13.2-13.4	
	Counties with Average Population 10,000 - 20,000	Allamakee	15	11.4	11.3	Hardin	19	11.3	10.7
		Appanoose	15	12.2	12.1	Humboldt	17	18.3	18.4
Butler		14	10.2	11.6	Iowa	12	8.5	9.0	
Calhoun		7	7.0	7.6	Jefferson	29	19.8	18.9	
Cass		16	12.2	12.9	Keokuk	15	14.6	12.8	
Cedar		19	11.6	11.7	Kossuth	7	4.6	5.5	
Cherokee		10	8.6	8.6	Louisa	11	10.1	10.0	
Chickasaw		16	13.6	16.4	Lyon	9	8.5	9.5	
Clay		20	12.8	11.9	Mitchell	12	12.3	13.6	
Clayton		30	17.9	18.3	Montgomery	15	14.3	14.1	
Crawford		9	5.9	6.3	O'Brien	16	11.8	11.9	
Delaware		8	4.9	4.9	Page	18	11.8	11.2	
Dickinson		21	14.3	14.2	Poweshiek	19	11.2	10.6	
Emmet		9	9.1	8.1	Sac	9	8.7	8.3	
Floyd		16	10.6	10.1	Shelby	13	11.0	12.7	
Franklin		8	8.2	9.1	Tama	21	13.0	13.3	
Greene		13	14.1	14.6	Union	22	20.0	20.6	
Hamilton		10	6.8	6.6	Winnebago	11	10.5	11.2	
Hancock		11	10.2	11.5	Wright	12	9.4	9.8	
				Total	554	11.3	11.4		
Counties with Average Population > 20,000	Boone	26	11.1	11.0	Lee	54	15.9	16.1	
	Buchanan	23	12.2	12.9	Mahaska	17	8.5	8.7	
	Buena Vista	13	7.1	7.2	Marion	22	7.6	7.6	
	Carroll	18	9.4	9.5	Marshall	37	10.5	10.5	
	Cerro Gordo	45	10.8	10.7	Muscatine	32	8.5	8.7	
	Clinton	60	13.3	12.8	Plymouth	19	8.5	8.5	
	Des Moines	52	13.7	13.3	Sioux	16	5.6	5.4	
	Fayette	18	9.2	9.2	Wapello	39	12.1	12.1	
	Henry	12	6.6	6.4	Webster	40	11.2	11.2	
	Jackson	32	17.6	17.3	Winneshiek	11	5.8	5.4	
	Jasper	29	8.7	8.4	Total	615	10.5	10.4	
MSA Counties	Benton	13	5.7	5.7	Linn	202	11.7	11.6	
	Black Hawk	104	9.1	9.5	Madison	20	15.8	16.1	
	Bremer	29	13.8	13.3	Mills	10	7.7	8.3	
	Dallas	29	7.7	8.1	Polk	376	11.1	11.1	
	Dubuque	95	11.8	11.9	Pottawattamie	106	13.5	13.6	
	Grundy	11	9.9	9.5	Scott	157	11.0	11.0	
	Guthrie	16	15.6	15.1	Story	60	8.4	8.7	
	Harrison	17	12.1	12.5	Warren	50	13.6	13.8	
	Johnson	81	8.1	8.1	Washington	23	12.3	11.8	
	Jones	20	10.9	10.5	Woodbury	104	11.2	11.2	
					Total	1,523	10.8	10.7	
State Total	2,883-7	10.9-11.0	10.7-10.8						

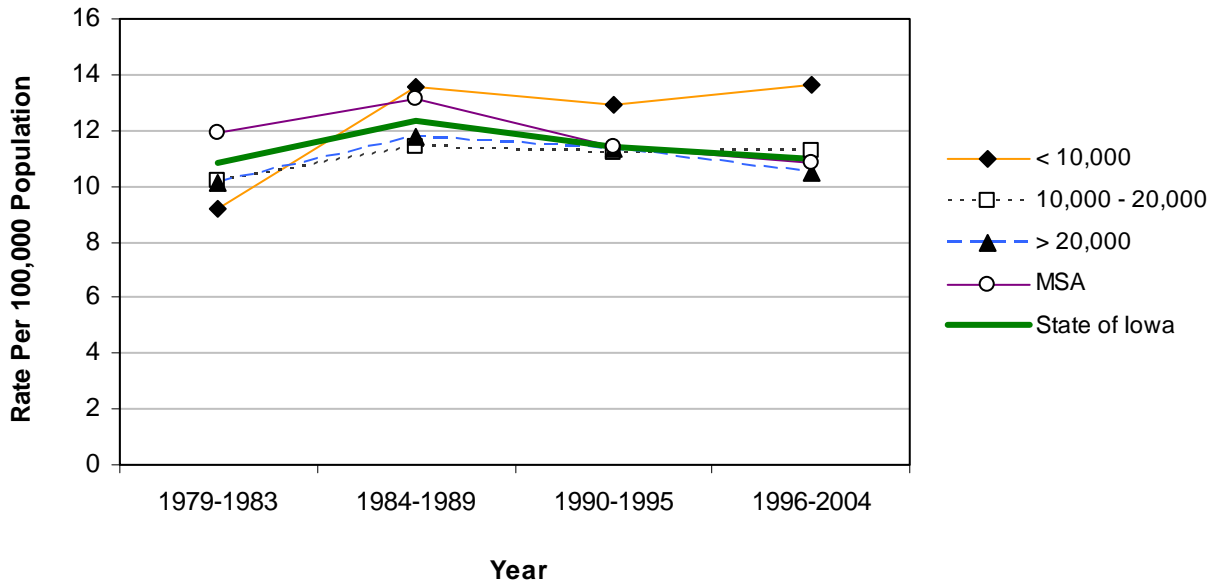
¹Rates per 100,000 Population

²Adjusted to Year 2000 Population

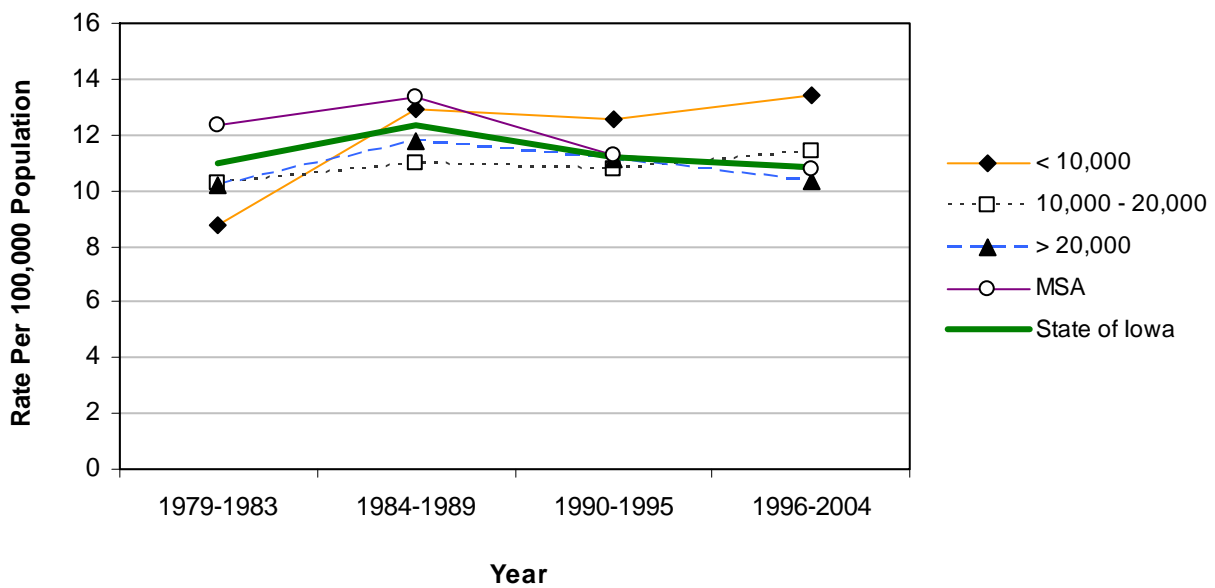
Source: State Health Registry of Iowa

Suicides by County Group 1979-2004

Crude Rates



Age-Adjusted Rates



Firearms Mortality 1996-2004

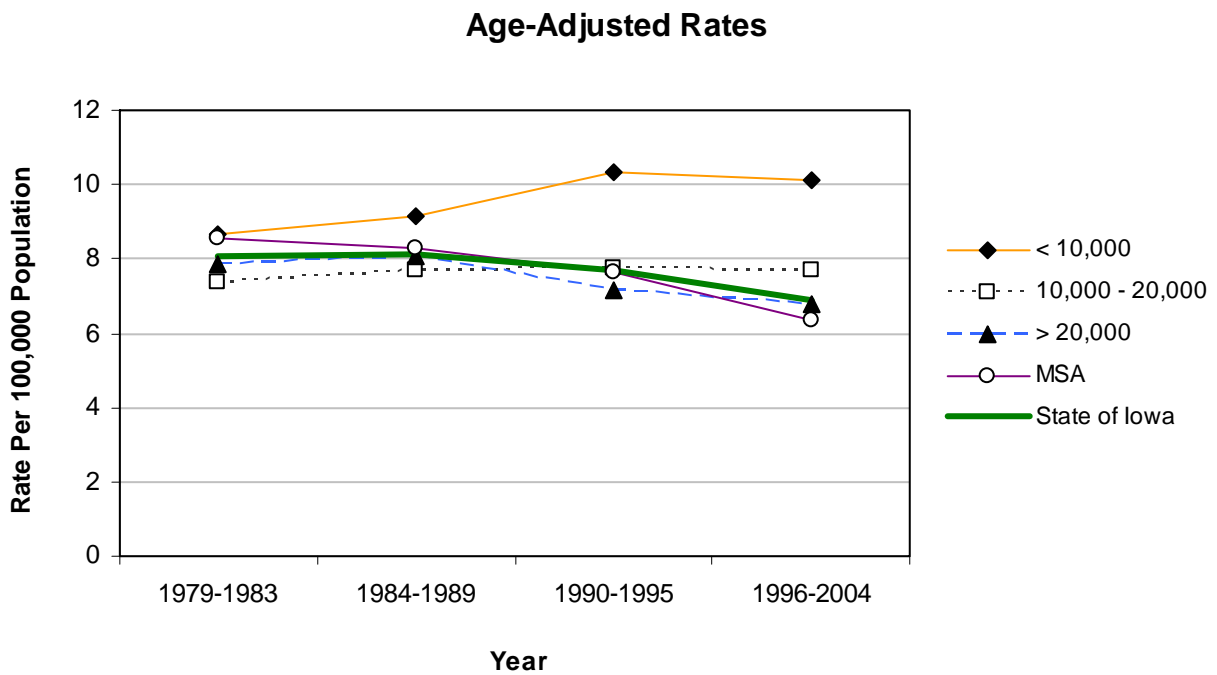
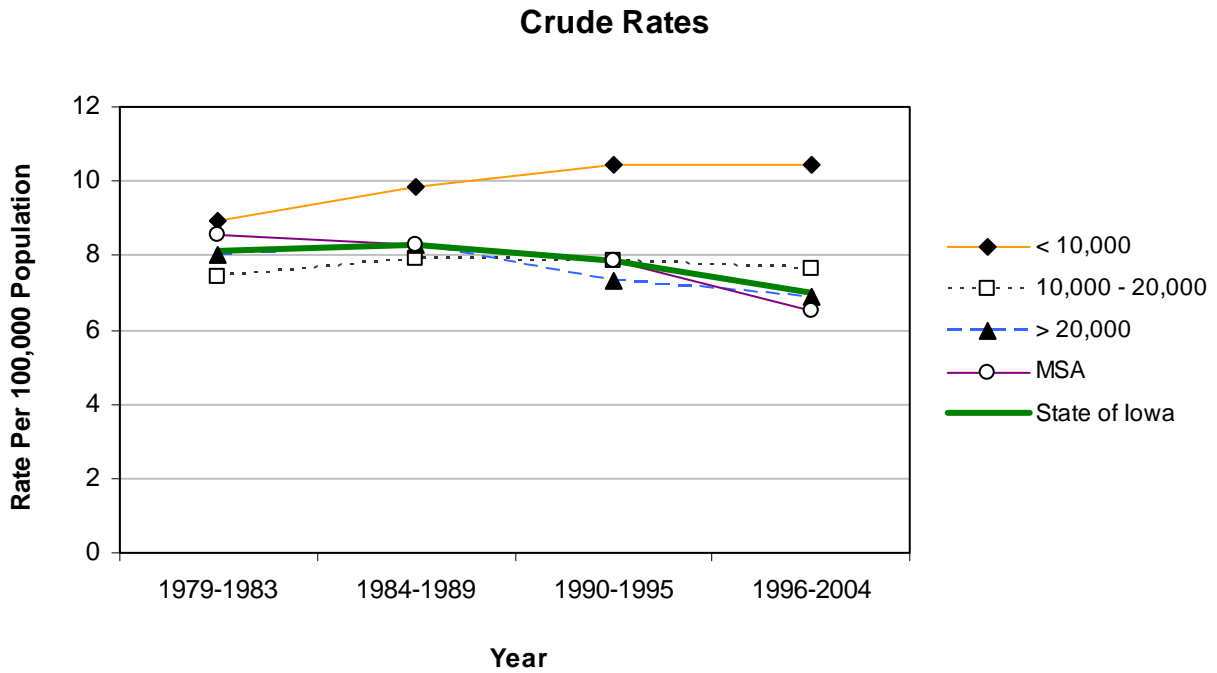
	County	#	Crude ¹	Adjusted ^{1,2}	County	#	Crude ¹	Adjusted ^{1,2}	
Counties with Average Population < 10,000	Adair	8	10.9	10.8	Monona	10	11.2	9.6	
	Adams	*	*	*	Monroe	10	13.9	13.3	
	Audubon	*	*	*	Osceola	7	11.1	10.4	
	Clarke	8	9.9	9.2	Palo Alto	7	7.7	7.2	
	Davis	11	14.3	13.6	Pocahontas	8	10.3	10.3	
	Decatur	8	10.4	8.9	Ringgold	6	12.3	13.0	
	Fremont	7	9.8	11.0	Taylor	9	14.5	12.9	
	Howard	8	9.0	10.1	Van Buren	15	21.5	20.6	
	Ida	*	*	*	Wayne	*	*	*	
	Lucas	6	7.1	7.2	Worth	7	9.9	10.4	
					Total	149	10.4	10.1	
	Counties with Average Population 10,000 – 20,000	Allamakee	11	8.4	9.7	Hardin	16	9.5	8.3
		Appanoose	10	8.1	7.8	Humboldt	14	15.1	15.1
Butler		10	7.3	8.0	Iowa	13	9.2	9.7	
Calhoun		*	*	*	Jefferson	15	10.3	9.8	
Cass		10	7.6	7.7	Keokuk	10	9.8	8.4	
Cedar		13	8.0	8.1	Kossuth	7	4.6	5.5	
Cherokee		*	*	*	Louisa	7	6.4	6.3	
Chickasaw		13	11.1	13.5	Lyon	6	5.7	6.6	
Clay		11	7.1	6.8	Mitchell	*	*	*	
Clayton		23	13.7	13.9	Montgomery	9	8.6	8.1	
Crawford		5	3.3	3.5	O'Brien	8	5.9	6.0	
Delaware		5	3.0	2.9	Page	14	9.2	8.3	
Dickinson		12	8.2	8.8	Poweshiek	14	8.2	7.5	
Emmet		8	8.1	7.4	Sac	8	7.8	8.2	
Floyd		7	4.6	4.2	Shelby	13	11.0	12.8	
Franklin		8	8.2	9.4	Tama	17	10.5	11.0	
Greene		6	6.5	6.5	Union	12	10.9	11.7	
Hamilton		10	6.8	6.5	Winnebago	9	8.6	8.3	
Hancock		*	*	*	Wright	7	5.5	6.6	
				Total	374	7.6	7.7		
Counties with Average Population > 20,000	Boone	17	7.2	7.3	Lee	26	7.6	7.4	
	Buchanan	12	6.3	6.7	Mahaska	11	5.5	5.6	
	Buena Vista	6	3.3	3.5	Marion	18	6.2	6.2	
	Carroll	10	5.2	5.0	Marshall	28	7.9	7.7	
	Cerro Gordo	37	8.9	8.7	Muscatine	23	6.1	6.3	
	Clinton	42	9.3	8.7	Plymouth	8	3.6	3.7	
	Des Moines	43	11.4	11.2	Sioux	15	5.3	5.0	
	Fayette	11	5.6	5.6	Wapello	35	10.8	10.9	
	Henry	8	4.4	4.2	Webster	19	5.3	5.0	
	Jackson	18	9.9	9.5	Winneshiek	*	*	*	
	Jasper	14	4.2	3.9	Total	401-405	6.7-6.9	6.6-6.8	
	MSA Counties	Benton	9	3.9	4.1	Linn	99	5.8	5.7
Black Hawk		60	5.2	5.1	Madison	13	10.2	10.8	
Bremer		13	6.2	6.1	Mills	6	4.6	4.6	
Dallas		24	6.4	6.6	Polk	260	7.7	7.7	
Dubuque		44	5.5	5.4	Pottawattamie	70	8.9	8.9	
Grundy		9	8.1	8.6	Scott	98	6.9	6.9	
Guthrie		11	10.8	11.5	Story	31	4.3	4.5	
Harrison		16	11.4	11.7	Warren	34	9.3	9.3	
Johnson		34	3.4	3.4	Washington	16	8.5	8.0	
Jones		12	6.5	6.2	Woodbury	54	5.8	5.8	
					Total	913	6.5	6.4	
State Total	1,837-41	6.9-7.0	6.8-6.9						

¹Rates per 100,000 Population

²Adjusted to Year 2000 Population

Source: State Health Registry of Iowa

Firearms Mortality by County Group 1979-2004



Falls Mortality 1996-2004

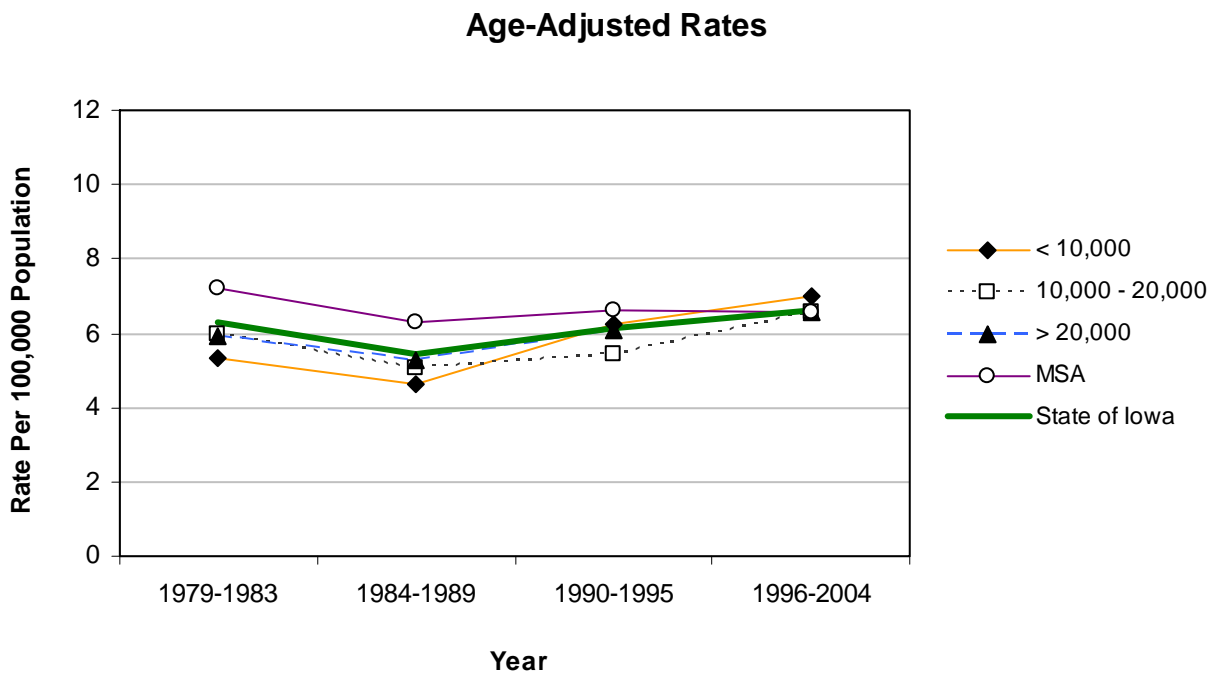
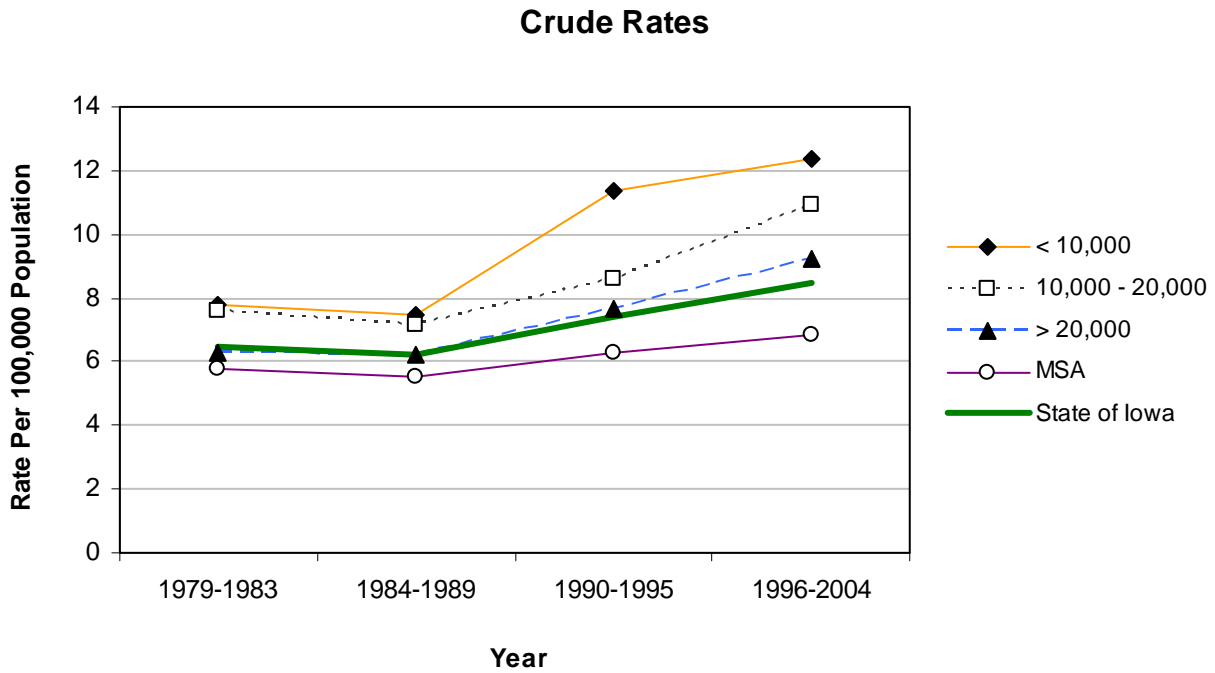
	County	#	Crude ¹	Adjusted ^{1,2}	County	#	Crude ¹	Adjusted ^{1,2}	
Counties with Average Population < 10,000	Adair	11	15.0	6.4	Monona	6	6.7	3.0	
	Adams	6	15.0	7.4	Monroe	9	12.5	8.0	
	Audubon	14	23.1	13.1	Osceola	*	*	*	
	Clarke	6	7.4	5.7	Palo Alto	13	14.4	8.6	
	Davis	14	18.2	12.1	Pocahontas	10	12.9	6.2	
	Decatur	6	7.8	6.4	Ringgold	*	*	*	
	Fremont	10	14.0	8.3	Taylor	9	14.5	7.5	
	Howard	12	13.5	6.6	Van Buren	8	11.5	7.8	
	Ida	9	12.9	7.0	Wayne	13	21.4	10.4	
	Lucas	7	8.2	5.0	Worth	8	11.3	5.1	
					Total	177	12.4	7.0	
	Counties with Average Population 10,000 – 20,000	Allamakee	17	13.0	8.1	Hardin	24	14.3	7.4
		Appanoose	9	7.3	5.5	Humboldt	8	8.6	5.2
Butler		10	7.3	4.3	Iowa	10	7.1	4.8	
Calhoun		22	22.1	11.0	Jefferson	13	8.9	7.5	
Cass		26	19.8	10.6	Keokuk	11	10.7	5.0	
Cedar		20	12.3	7.3	Kossuth	15	9.8	5.7	
Cherokee		7	6.0	3.6	Louisa	6	5.5	4.3	
Chickasaw		8	6.8	4.5	Lyon	15	14.2	7.8	
Clay		12	7.7	5.4	Mitchell	10	10.2	5.4	
Clayton		19	11.3	7.7	Montgomery	24	22.9	13.0	
Crawford		12	7.9	5.2	O'Brien	12	8.9	5.2	
Delaware		12	7.3	5.8	Page	20	13.2	7.6	
Dickinson		21	14.3	8.1	Poweshiek	22	12.9	7.6	
Emmet		17	17.2	9.1	Sac	14	13.6	6.7	
Floyd		10	6.6	3.5	Shelby	12	10.2	5.2	
Franklin		14	14.4	9.4	Tama	8	4.9	3.5	
Greene		18	19.5	10.2	Union	14	12.7	7.4	
Hamilton		14	9.5	6.1	Winnebago	6	5.7	3.8	
Hancock	9	8.3	5.5	Wright	16	12.5	6.9		
				Total	537	10.9	6.6		
Counties with Average Population > 20,000	Boone	17	7.2	4.6	Lee	35	10.3	7.0	
	Buchanan	24	12.7	10.2	Mahaska	13	6.5	4.6	
	Buena Vista	21	11.5	7.7	Marion	34	11.8	8.2	
	Carroll	18	9.4	5.6	Marshall	42	11.9	8.5	
	Cerro Gordo	34	8.2	5.7	Muscatine	28	7.5	6.8	
	Clinton	27	6.0	4.7	Plymouth	15	6.7	5.0	
	Des Moines	32	8.5	6.1	Sioux	20	7.0	5.7	
	Fayette	17	8.6	5.1	Wapello	33	10.2	6.8	
	Henry	15	8.2	6.1	Webster	60	16.8	10.9	
	Jackson	13	7.1	4.9	Winneshiek	18	9.4	6.1	
	Jasper	26	7.8	6.0	Total	542	9.2	6.6	
MSA Counties	Benton	16	7.0	5.5	Linn	131	7.6	7.4	
	Black Hawk	85	7.4	6.3	Madison	9	7.1	5.2	
	Bremer	19	9.0	6.8	Mills	5	3.8	3.7	
	Dallas	21	5.6	5.6	Polk	205	6.1	6.5	
	Dubuque	54	6.7	5.4	Pottawattamie	50	6.4	6.0	
	Grundy	10	9.0	5.0	Scott	113	7.9	8.2	
	Guthrie	8	7.8	5.2	Story	30	4.2	4.6	
	Harrison	18	12.8	8.1	Warren	26	7.1	7.0	
	Johnson	44	4.4	6.6	Washington	25	13.3	7.0	
	Jones	13	7.1	5.3	Woodbury	82	8.8	7.9	
					Total	964	6.9	6.6	
State Total		2,220	8.4	6.6					

¹Rates per 100,000 Population

²Adjusted to Year 2000 Population

Source: State Health Registry of Iowa

Falls Mortality by County Group 1979-2004



Homicides 1996-2004

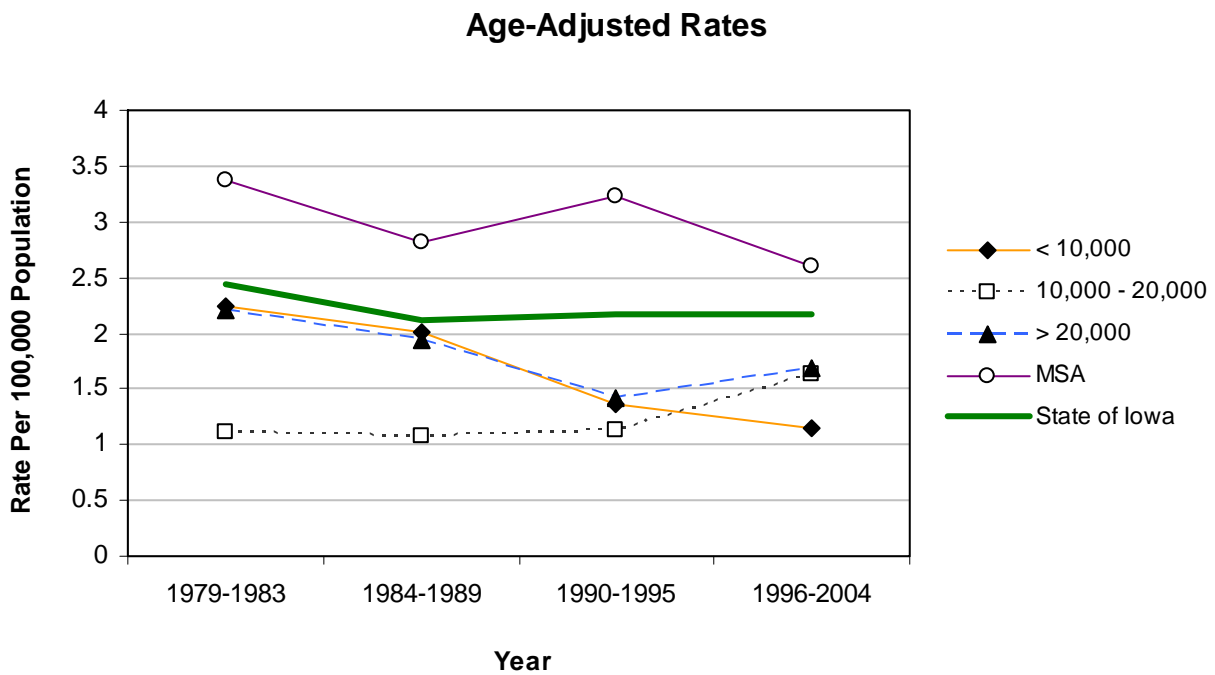
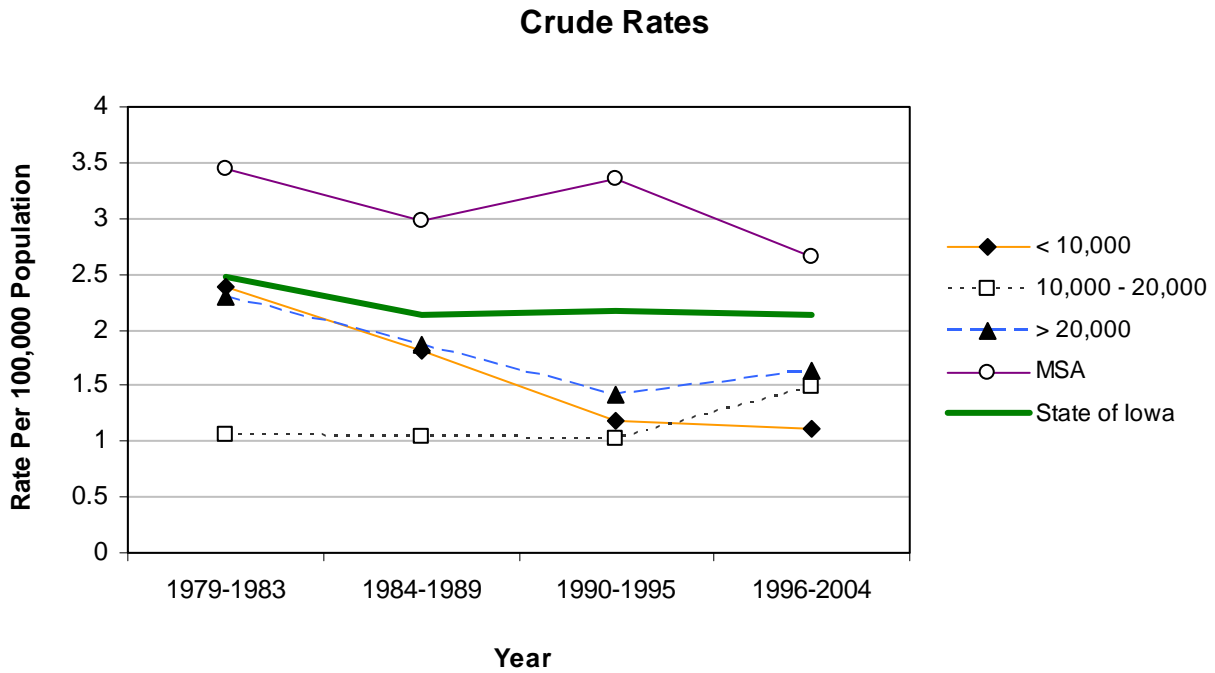
	County	#	Crude Rate ¹	Adjusted Rate ^{1,2}	County	#	Crude Rate ¹	Adjusted Rate ^{1,2}	
Counties with Average Population < 10,000	Adair	*	*	*	Monona	*	*	*	
	Adams	*	*	*	Monroe	*	*	*	
	Audubon	*	*	*	Osceola	*	*	*	
	Clarke	*	*	*	Palo Alto	*	*	*	
	Davis	*	*	*	Pocahontas	*	*	*	
	Decatur	*	*	*	Ringgold	*	*	*	
	Fremont	*	*	*	Taylor	*	*	*	
	Howard	*	*	*	Van Buren	*	*	*	
	Ida	*	*	*	Wayne	*	*	*	
	Lucas	*	*	*	Worth	*	*	*	
					Total	16	1.1	1.1	
	Counties with Average Population 10,000 – 20,000	Allamakee	*	*	*	Hardin	*	*	*
		Appanoose	*	*	*	Humboldt	*	*	*
Butler		*	*	*	Iowa	*	*	*	
Calhoun		*	*	*	Jefferson	*	*	*	
Cass		*	*	*	Keokuk	*	*	*	
Cedar		*	*	*	Kossuth	*	*	*	
Cherokee		*	*	*	Louisa	*	*	*	
Chickasaw		*	*	*	Lyon	*	*	*	
Clay		*	*	*	Mitchell	*	*	*	
Clayton		*	*	*	Montgomery	*	*	*	
Crawford		*	*	*	O'Brien	*	*	*	
Delaware		*	*	*	Page	*	*	*	
Dickinson		*	*	*	Poweshiek	*	*	*	
Emmet		*	*	*	Sac	*	*	*	
Floyd		*	*	*	Shelby	*	*	*	
Franklin		5	5.2	5.8	Tama	8	4.9	5.6	
Greene		*	*	*	Union	5	4.5	5.1	
Hamilton		*	*	*	Winnebago	*	*	*	
Hancock	*	*	*	Wright	*	*	*		
				Total	73	1.5	1.6		
Counties with Average Population > 20,000	Boone	*	*	*	Lee	*	*	*	
	Buchanan	*	*	*	Mahaska	*	*	*	
	Buena Vista	*	*	*	Marion	*	*	*	
	Carroll	*	*	*	Marshall	11	3.1	3.1	
	Cerro Gordo	13	3.1	3.1	Muscatine	6	1.6	1.6	
	Clinton	7	1.5	1.6	Plymouth	*	*	*	
	Des Moines	7	1.9	1.9	Sioux	*	*	*	
	Fayette	*	*	*	Wapello	10	3.1	3.4	
	Henry	*	*	*	Webster	9	2.5	2.5	
	Jackson	*	*	*	Winneshiek	*	*	*	
	Jasper	*	*	*	Total	96	1.6	1.7	
	MSA Counties	Benton	*	*	*	Linn	27	1.6	1.5
Black Hawk		24	2.1	1.9	Madison	5	3.9	3.9	
Bremer		*	*	*	Mills	*	*	*	
Dallas		5	1.3	1.4	Polk	159	4.7	4.6	
Dubuque		6	0.7	0.8	Pottawattamie	43	5.5	5.6	
Grundy		*	*	*	Scott	38	2.7	2.6	
Guthrie		*	*	*	Story	*	*	*	
Harrison		*	*	*	Warren	5	1.4	1.4	
Johnson		15	1.5	1.6	Washington	*	*	*	
Jones		*	*	*	Woodbury	29	3.1	3.1	
					Total	374	2.7	2.6	
State Total	559	2.1	2.2						

¹Rates per 100,000 Population

²Adjusted to Year 2000 Population

Source: State Health Registry of Iowa

Homicides by County Group 1979-2004



Poisoning Mortality 1996-2004

	County	#	Crude ¹	Adjusted ^{1,2}	County	#	Crude ¹	Adjusted ^{1,2}	
Counties with Average Population < 10,000	Adair	*	*	*	Monona	*	*	*	
	Adams	*	*	*	Monroe	*	*	*	
	Audubon	*	*	*	Osceola	*	*	*	
	Clarke	*	*	*	Palo Alto	*	*	*	
	Davis	*	*	*	Pocahontas	*	*	*	
	Decatur	*	*	*	Ringgold	*	*	*	
	Fremont	*	*	*	Taylor	*	*	*	
	Howard	*	*	*	Van Buren	*	*	*	
	Ida	*	*	*	Wayne	*	*	*	
	Lucas	*	*	*	Worth	*	*	*	
					Total	17	1.2	1.1	
	Counties with Average Population 10,000 – 20,000	Allamakee	*	*	*	Hardin	*	*	*
		Appanoose	*	*	*	Humboldt	*	*	*
Butler		*	*	*	Iowa	*	*	*	
Calhoun		*	*	*	Jefferson	*	*	*	
Cass		*	*	*	Keokuk	*	*	*	
Cedar		*	*	*	Kossuth	*	*	*	
Cherokee		5	4.3	3.4	Louisa	*	*	*	
Chickasaw		*	*	*	Lyon	*	*	*	
Clay		*	*	*	Mitchell	*	*	*	
Clayton		*	*	*	Montgomery	*	*	*	
Crawford		*	*	*	O'Brien	*	*	*	
Delaware		*	*	*	Page	*	*	*	
Dickinson		*	*	*	Poweshiek	*	*	*	
Emmet		*	*	*	Sac	*	*	*	
Floyd		*	*	*	Shelby	*	*	*	
Franklin		*	*	*	Tama	*	*	*	
Greene		*	*	*	Union	*	*	*	
Hamilton		*	*	*	Winnebago	*	*	*	
Hancock	*	*	*	Wright	*	*	*		
				Total	62	1.3	1.2		
Counties with Average Population > 20,000	Boone	6	2.6	2.5	Lee	9	2.6	2.7	
	Buchanan	*	*	*	Mahaska	8	4.0	4.0	
	Buena Vista	*	*	*	Marion	5	1.7	1.6	
	Carroll	*	*	*	Marshall	5	1.4	1.3	
	Cerro Gordo	7	1.7	1.7	Muscatine	5	1.3	1.3	
	Clinton	6	1.3	1.3	Plymouth	6	2.7	2.8	
	Des Moines	9	2.4	2.5	Sioux	*	*	*	
	Fayette	5	2.5	2.5	Wapello	7	2.2	2.3	
	Henry	*	*	*	Webster	8	2.2	2.3	
	Jackson	*	*	*	Winneshiek	*	*	*	
	Jasper	8	2.4	2.4	Total	111	1.9	1.9	
	MSA Counties	Benton	*	*	*	Linn	51	3.0	2.9
Black Hawk		24	2.1	2.2	Madison	*	*	*	
Bremer		*	*	*	Mills	*	*	*	
Dallas		5	1.3	1.3	Polk	78	2.3	2.3	
Dubuque		5	0.6	0.6	Pottawattamie	17	2.2	2.2	
Grundy		*	*	*	Scott	35	2.5	2.4	
Guthrie		*	*	*	Story	6	0.8	0.9	
Harrison		*	*	*	Warren	5	1.4	1.5	
Johnson		29	2.9	3.0	Washington	*	*	*	
Jones		*	*	*	Woodbury	32	3.4	3.5	
					Total	300	2.1	2.1	
State Total	490	1.9	1.9						

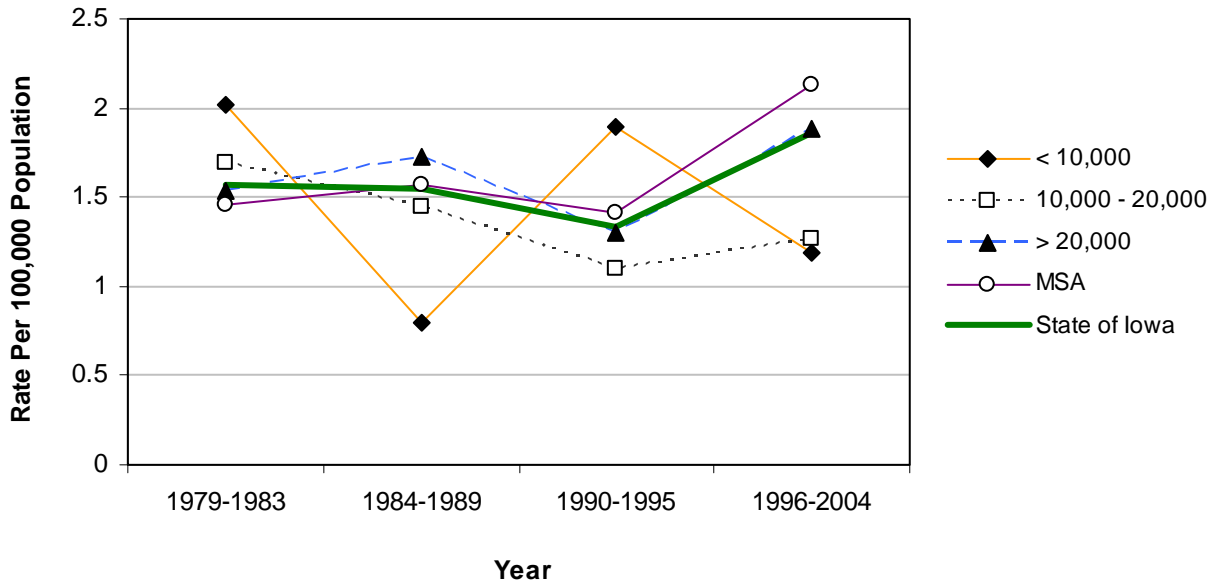
¹Rates per 100,000 Population

²Adjusted to Year 2000 Population

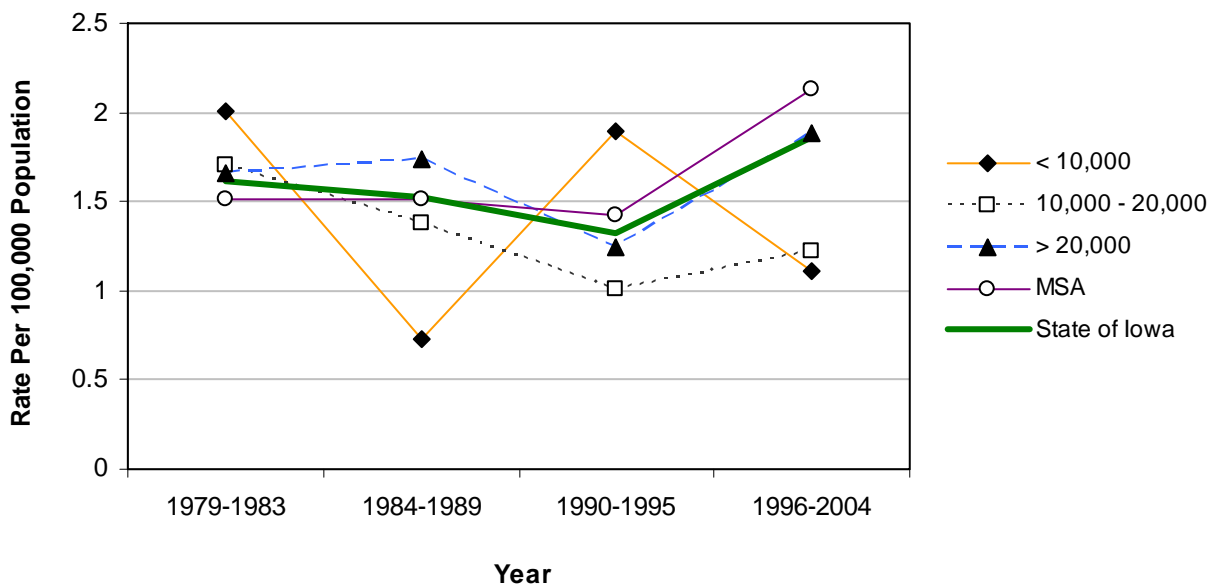
Source: State Health Registry of Iowa

Poisoning Mortality by County Group 1979-2004

Crude Rates



Age-Adjusted Rates



Burns Mortality 1996-2004

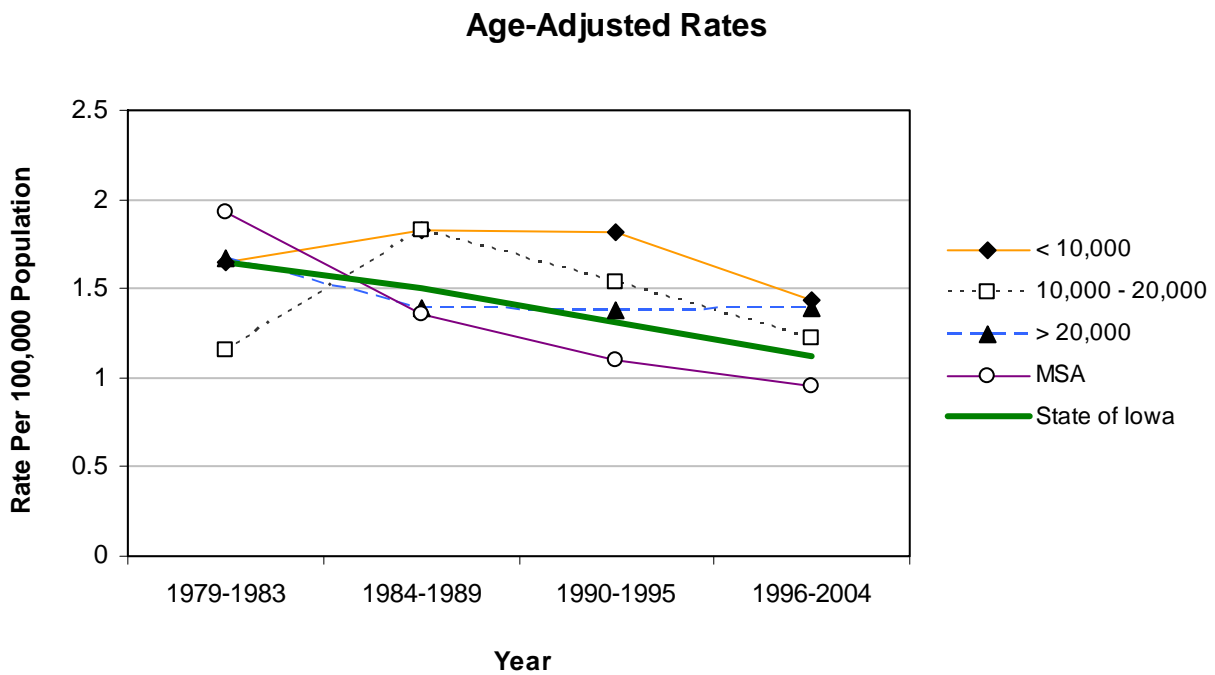
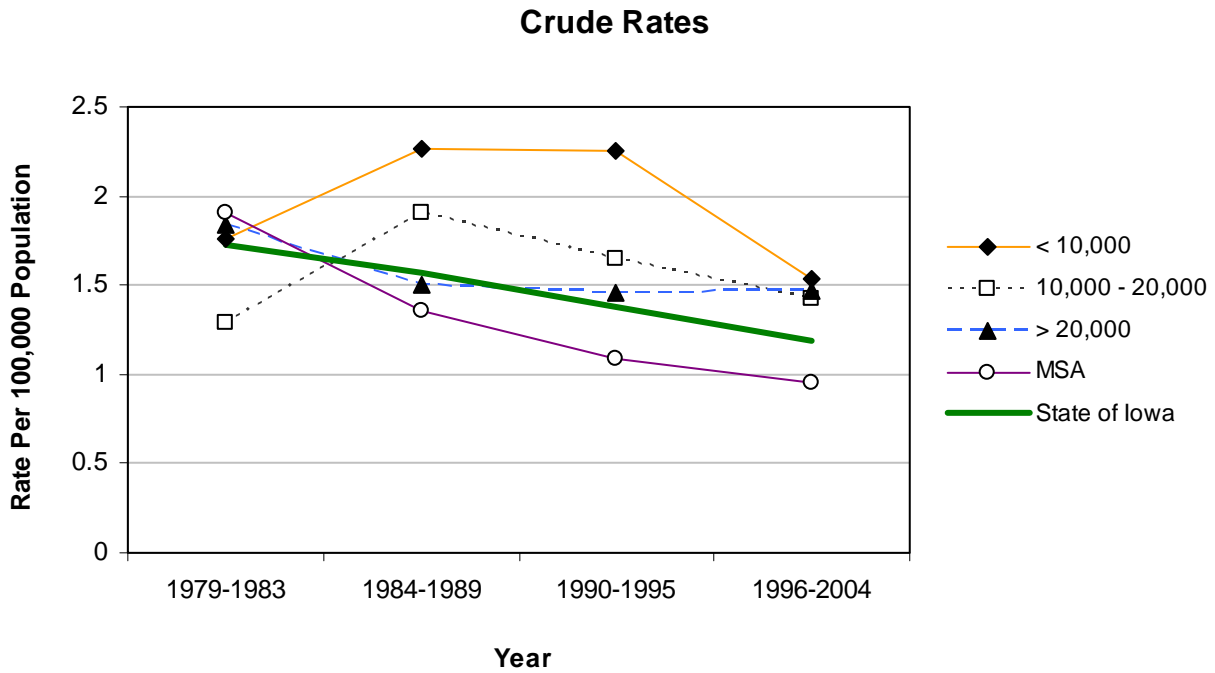
	County	#	Crude ¹	Adjusted ^{1,2}	County	#	Crude ¹	Adjusted ^{1,2}	
Counties with Average Population < 10,000	Adair	*	*	*	Monona	*	*	*	
	Adams	*	*	*	Monroe	*	*	*	
	Audubon	*	*	*	Osceola	*	*	*	
	Clarke	*	*	*	Palo Alto	*	*	*	
	Davis	*	*	*	Pocahontas	*	*	*	
	Decatur	*	*	*	Ringgold	*	*	*	
	Fremont	*	*	*	Taylor	*	*	*	
	Howard	*	*	*	Van Buren	*	*	*	
	Ida	*	*	*	Wayne	*	*	*	
	Lucas	*	*	*	Worth	*	*	*	
					Total	22	1.5	1.4	
	Counties with Average Population 10,000 – 20,000	Allamakee	*	*	*	Hardin	*	*	*
		Appanoose	*	*	*	Humboldt	*	*	*
Butler		*	*	*	Iowa	*	*	*	
Calhoun		*	*	*	Jefferson	*	*	*	
Cass		*	*	*	Keokuk	*	*	*	
Cedar		*	*	*	Kossuth	*	*	*	
Cherokee		*	*	*	Louisa	*	*	*	
Chickasaw		*	*	*	Lyon	*	*	*	
Clay		*	*	*	Mitchell	*	*	*	
Clayton		*	*	*	Montgomery	*	*	*	
Crawford		*	*	*	O'Brien	*	*	*	
Delaware		*	*	*	Page	*	*	*	
Dickinson		*	*	*	Poweshiek	*	*	*	
Emmet		*	*	*	Sac	*	*	*	
Floyd		*	*	*	Shelby	*	*	*	
Franklin		*	*	*	Tama	*	*	*	
Greene		*	*	*	Union	*	*	*	
Hamilton		*	*	*	Winnebago	8	7.6	7.3	
Hancock		*	*	*	Wright	*	*	*	
				Total	70	1.4	1.2		
Counties with Average Population > 20,000	Boone	*	*	*	Lee	8	2.4	2.6	
	Buchanan	*	*	*	Mahaska	5	2.5	2.7	
	Buena Vista	5	2.7	3.0	Marion	*	*	*	
	Carroll	*	*	*	Marshall	*	*	*	
	Cerro Gordo	*	*	*	Muscatine	7	1.9	1.9	
	Clinton	10	2.2	2.1	Plymouth	*	*	*	
	Des Moines	*	*	*	Sioux	*	*	*	
	Fayette	*	*	*	Wapello	8	2.5	2.4	
	Henry	*	*	*	Webster	5	1.4	1.5	
	Jackson	*	*	*	Winneshiek	*	*	*	
	Jasper	*	*	*	Total	86	1.5	1.4	
MSA Counties	Benton	*	*	*	Linn	15	0.9	0.9	
	Black Hawk	17	1.5	1.5	Madison	*	*	*	
	Bremer	*	*	*	Mills	*	*	*	
	Dallas	*	*	*	Polk	32	0.9	1.0	
	Dubuque	*	*	*	Pottawattamie	*	*	*	
	Grundy	*	*	*	Scott	16	1.1	1.1	
	Guthrie	*	*	*	Story	7	1.0	1.0	
	Harrison	*	*	*	Warren	*	*	*	
	Johnson	8	0.8	1.0	Washington	6	3.2	2.9	
	Jones	*	*	*	Woodbury	7	0.8	0.7	
					Total	134	1.0	1.0	
State Total	312	1.2	1.1						

¹Rates per 100,000 Population

²Adjusted to Year 2000 Population

Source: State Health Registry of Iowa

Burns Mortality by County Group 1979-2004



Drowning Mortality 1996-2004

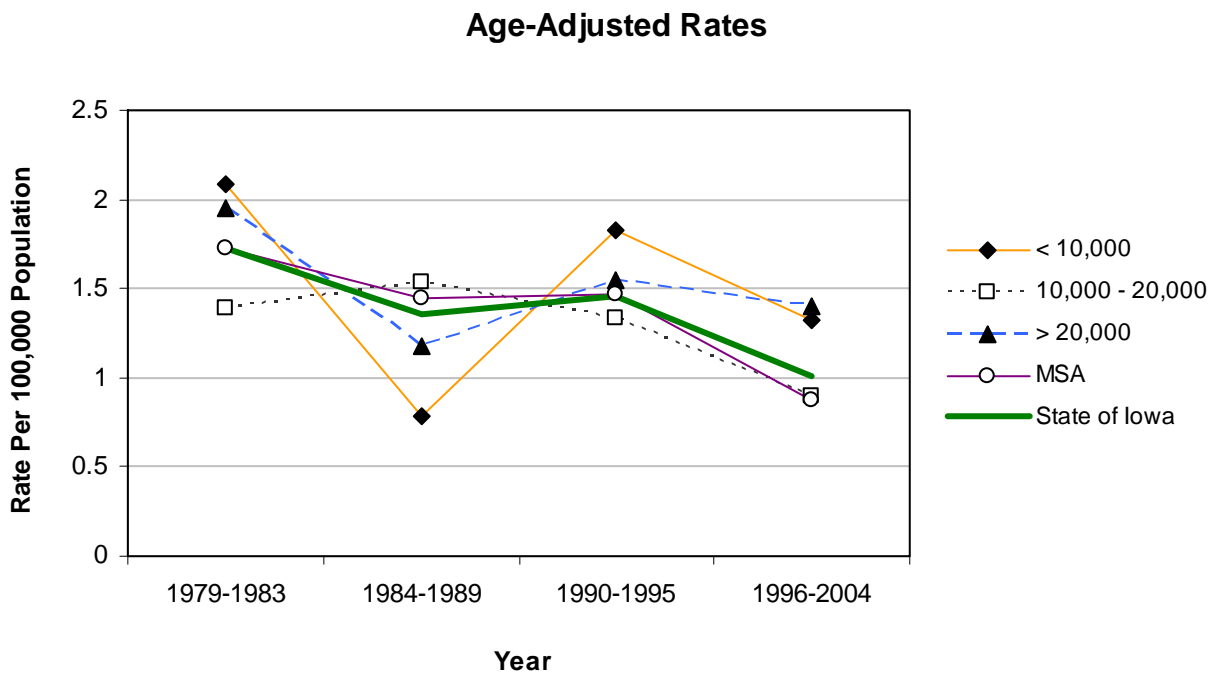
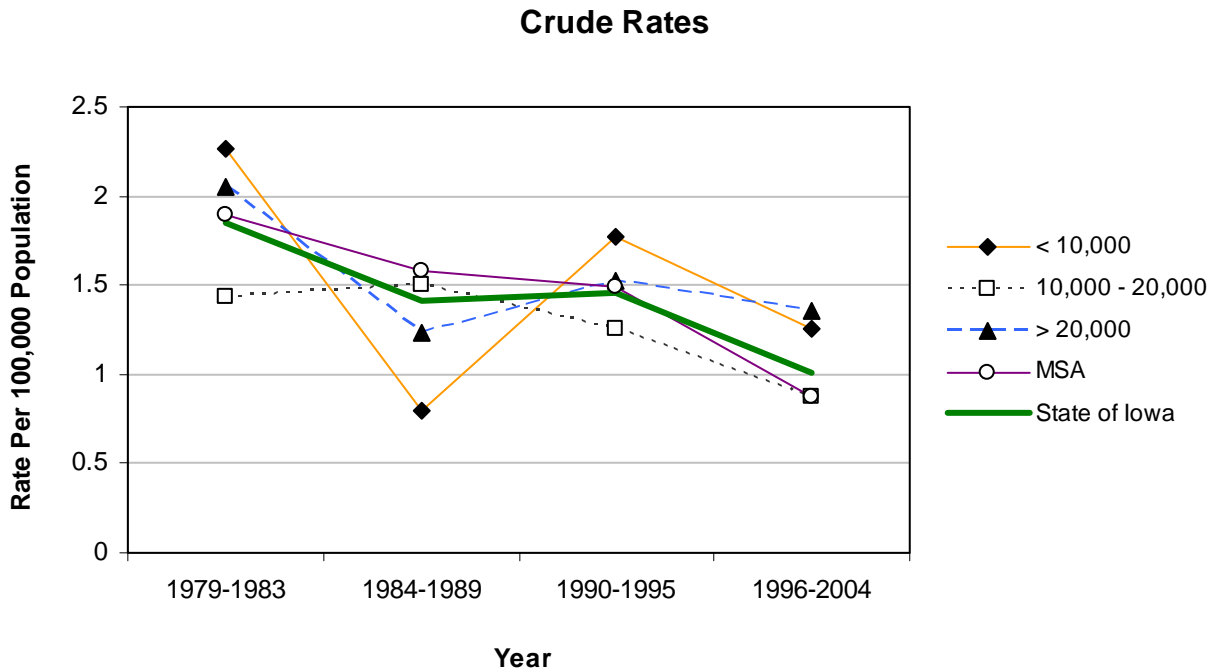
	County	#	Crude ¹	Adjusted ^{1,2}	County	#	Crude ¹	Adjusted ^{1,2}	
Counties with Average Population < 10,000	Adair	*	*	*	Monona	*	*	*	
	Adams	*	*	*	Monroe	*	*	*	
	Audubon	*	*	*	Osceola	*	*	*	
	Clarke	*	*	*	Palo Alto	*	*	*	
	Davis	*	*	*	Pocahontas	*	*	*	
	Decatur	*	*	*	Ringgold	*	*	*	
	Fremont	*	*	*	Taylor	*	*	*	
	Howard	*	*	*	Van Buren	*	*	*	
	Ida	*	*	*	Wayne	*	*	*	
	Lucas	*	*	*	Worth	*	*	*	
					Total	18	1.3	1.3	
	Counties with Average Population 10,000 – 20,000	Allamakee	*	*	*	Hardin	*	*	*
		Appanoose	*	*	*	Humboldt	*	*	*
Butler		*	*	*	Iowa	*	*	*	
Calhoun		*	*	*	Jefferson	*	*	*	
Cass		*	*	*	Keokuk	*	*	*	
Cedar		*	*	*	Kossuth	*	*	*	
Cherokee		*	*	*	Louisa	*	*	*	
Chickasaw		*	*	*	Lyon	*	*	*	
Clay		*	*	*	Mitchell	*	*	*	
Clayton		*	*	*	Montgomery	*	*	*	
Crawford		*	*	*	O'Brien	*	*	*	
Delaware		*	*	*	Page	*	*	*	
Dickinson		*	*	*	Poweshiek	*	*	*	
Emmet		*	*	*	Sac	*	*	*	
Floyd		*	*	*	Shelby	*	*	*	
Franklin		*	*	*	Tama	*	*	*	
Greene		*	*	*	Union	*	*	*	
Hamilton		*	*	*	Winnebago	*	*	*	
Hancock	*	*	*	Wright	*	*	*		
				Total	43	0.9	0.9		
Counties with Average Population > 20,000	Boone	*	*	*	Lee	10	2.9	2.9	
	Buchanan	*	*	*	Mahaska	*	*	*	
	Buena Vista	*	*	*	Marion	*	*	*	
	Carroll	*	*	*	Marshall	8	2.3	2.4	
	Cerro Gordo	10	2.4	2.6	Muscatine	*	*	*	
	Clinton	9	2.0	2.1	Plymouth	*	*	*	
	Des Moines	6	1.6	1.7	Sioux	*	*	*	
	Fayette	*	*	*	Wapello	6	1.9	1.8	
	Henry	*	*	*	Webster	*	*	*	
	Jackson	*	*	*	Winneshiek	*	*	*	
	Jasper	7	2.1	2.3	Total	80	1.4	1.4	
MSA Counties	Benton	*	*	*	Linn	15	0.9	0.9	
	Black Hawk	9	0.8	0.8	Madison	*	*	*	
	Bremer	*	*	*	Mills	*	*	*	
	Dallas	8	2.1	2.1	Polk	29	0.9	0.9	
	Dubuque	*	*	*	Pottawattamie	12	1.5	1.6	
	Grundy	*	*	*	Scott	11	0.8	0.8	
	Guthrie	*	*	*	Story	*	*	*	
	Harrison	*	*	*	Warren	*	*	*	
	Johnson	6	0.6	0.6	Washington	*	*	*	
	Jones	5	2.7	3.0	Woodbury	14	1.5	1.5	
				Total	123	0.9	0.9		
State Total		264	1.0	1.0					

¹Rates per 100,000 Population

²Adjusted to Year 2000 Population

Source: State Health Registry of Iowa

Drowning Mortality by County Group 1979-2004



All Other Unintentional Mortality 1996-2004

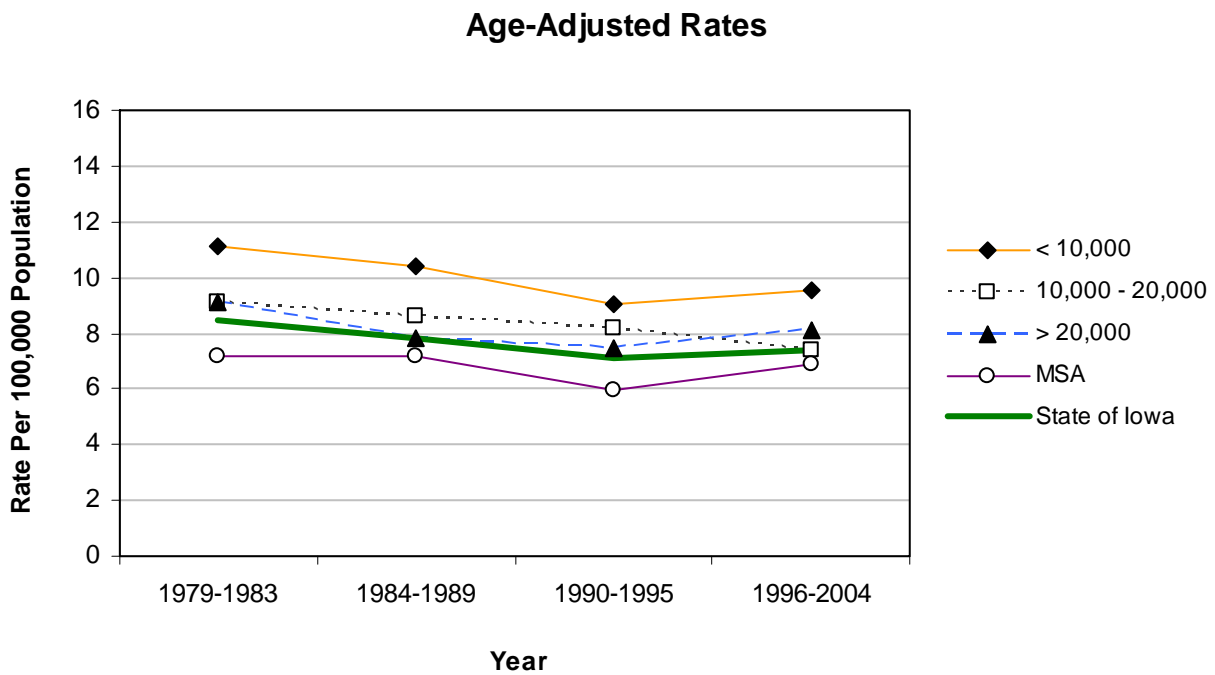
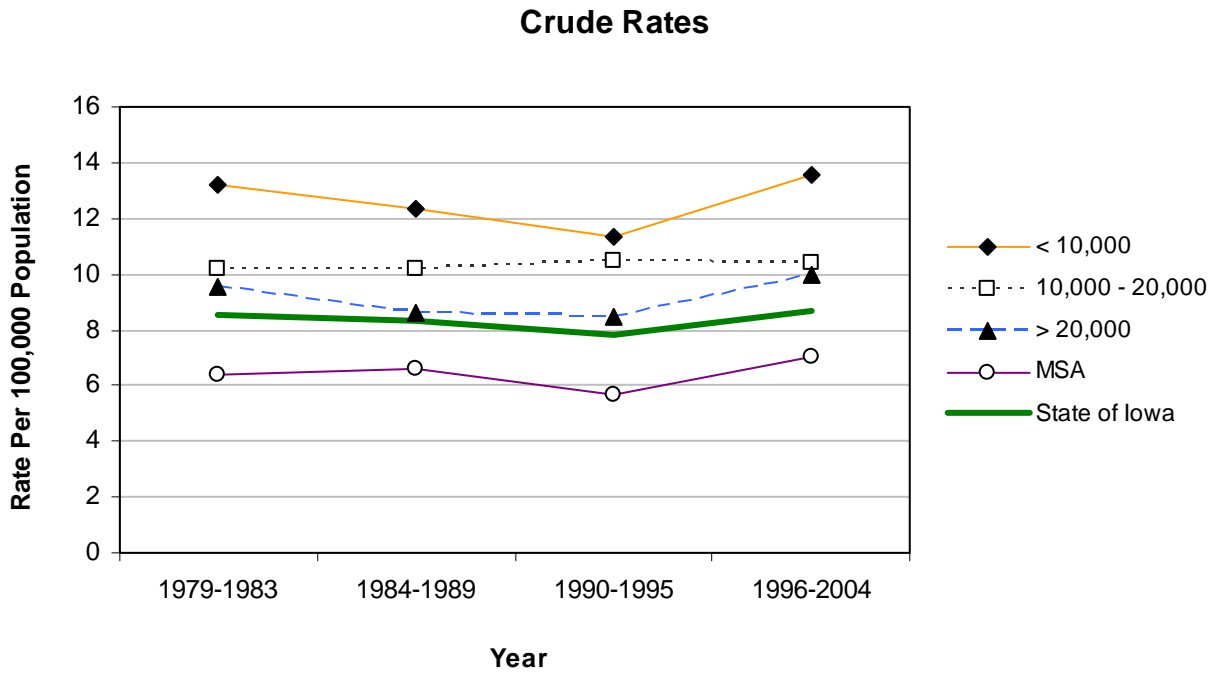
	County	#	Crude ¹	Adjusted ^{1,2}	County	#	Crude ¹	Adjusted ^{1,2}	
Counties with Average Population < 10,000	Adair	7	9.5	5.2	Monona	15	16.8	9.8	
	Adams	*	*	*	Monroe	*	*	*	
	Audubon	9	14.8	6.6	Osceola	7	11.1	9.5	
	Clarke	10	12.3	9.5	Palo Alto	12	13.3	9.5	
	Davis	16	20.8	16.2	Pocahontas	6	7.8	6.4	
	Decatur	10	12.9	9.4	Ringgold	10	20.5	17.4	
	Fremont	10	14.0	9.7	Taylor	12	19.3	10.2	
	Howard	11	12.3	8.8	Van Buren	18	25.8	19.4	
	Ida	18	25.7	20.4	Wayne	6	9.9	7.0	
	Lucas	6	7.1	4.0	Worth	*	*	*	
					Total	194	13.6	9.5	
	Counties with Average Population 10,000 – 20,000	Allamakee	17	13.0	8.9	Hardin	16	9.5	5.8
		Appanoose	12	9.8	6.7	Humboldt	7	7.5	4.8
Butler		16	11.7	8.3	Iowa	14	9.9	6.6	
Calhoun		11	11.1	7.6	Jefferson	9	6.2	5.8	
Cass		19	14.4	10.3	Keokuk	11	10.7	8.5	
Cedar		12	7.4	5.6	Kossuth	14	9.1	7.7	
Cherokee		11	9.4	7.7	Louisa	14	12.8	11.4	
Chickasaw		9	7.7	5.6	Lyon	7	6.6	4.1	
Clay		15	9.6	6.5	Mitchell	17	17.4	11.7	
Clayton		17	10.1	7.3	Montgomery	14	13.4	8.2	
Crawford		21	13.8	10.9	O'Brien	14	10.3	8.1	
Delaware		11	6.7	6.1	Page	21	13.8	8.4	
Dickinson		15	10.2	7.3	Poweshiek	18	10.6	7.7	
Emmet		15	15.1	10.2	Sac	7	6.8	5.1	
Floyd		11	7.3	4.9	Shelby	19	16.1	9.5	
Franklin		10	10.3	6.6	Tama	14	8.7	6.4	
Greene		7	7.6	4.4	Union	11	10.0	7.6	
Hamilton		14	9.5	6.3	Winnebago	17	16.2	9.2	
Hancock		9	8.3	6.6	Wright	16	12.5	9.3	
				Total	512	10.4	7.4		
Counties with Average Population > 20,000	Boone	29	12.3	9.4	Lee	31	9.1	7.2	
	Buchanan	16	8.5	7.5	Mahaska	12	6.0	4.5	
	Buena Vista	20	10.9	9.5	Marion	36	12.5	10.3	
	Carroll	25	13.0	10.2	Marshall	43	12.2	9.6	
	Cerro Gordo	36	8.7	6.9	Muscatine	29	7.7	7.2	
	Clinton	37	8.2	7.1	Plymouth	26	11.7	10.3	
	Des Moines	31	8.2	6.4	Sioux	22	7.7	6.9	
	Fayette	20	10.2	6.7	Wapello	32	9.9	7.8	
	Henry	30	16.5	14.3	Webster	53	14.8	11.6	
	Jackson	15	8.2	6.4	Winneshiek	15	7.9	6.7	
	Jasper	29	8.7	7.3	Total	587	10.0	8.1	
MSA Counties	Benton	26	11.4	9.3	Linn	112	6.5	6.4	
	Black Hawk	100	8.7	7.9	Madison	18	14.2	12.8	
	Bremer	15	7.1	5.5	Mills	22	16.9	16.2	
	Dallas	20	5.3	5.5	Polk	186	5.5	5.8	
	Dubuque	43	5.3	4.7	Pottawattamie	58	7.4	7.0	
	Grundy	13	11.7	8.4	Scott	107	7.5	7.7	
	Guthrie	6	5.9	3.6	Story	40	5.6	6.1	
	Harrison	26	18.5	14.6	Warren	24	6.5	6.7	
	Johnson	52	5.2	7.7	Washington	22	11.7	7.5	
	Jones	19	10.4	8.7	Woodbury	82	8.8	8.2	
					Total	991	7.0	6.9	
State Total	2,284	8.7	7.4						

¹Rates per 100,000 Population

²Adjusted to Year 2000 Population

Source: State Health Registry of Iowa

All Other Unintentional Mortality by County Group 1979-2004



[This page has been intentionally left blank.]