

Other Mortality

With the population aging, chronic disease has become a major determinant of the health of Iowans and the need for health care services in the state.

Heart disease, still the number one cause of death in Iowa, accounted for 290 deaths per 100,000 persons (crude rate) between 1996 and 2004. Using age-adjusted rates, the four county groupings (based on county size) do not vary much, but we do see a consistent decline over time. In the 1978 to 1983 period, the state age-adjusted mortality rate was 365 per 100,000, whereas it has dropped steadily to 231 per 100,000 by the 1996-2004 time period. This represents a 37% decline.

Stroke is currently the third leading cause of death in Iowa, with a crude mortality rate of 75 per 100,000 between 1996 and 2004. From 1978 through 1990, we experienced a steady decline in age-adjusted stroke mortality, but it declined only slightly between 1990-1995 and 1996-2004. The age-adjusted mortality rates for chronic

obstructive pulmonary disease, currently the fourth leading cause of death, have been increasing across time with the larger counties experiencing the highest rates. The fifth leading cause, unintentional injuries, includes motor vehicle collisions (MVC). Death from pneumonia and influenza, the sixth leading cause of death, shows little overall change over time, when adjusted for age, but crude rates indicate a greater problem in the smaller counties, due to their larger proportion of elderly. The smaller counties are also exhibiting a greater problem with mortality due to diabetes, kidney diseases (nephritis, nephritic syndrome, and nephrosis), and Alzheimer's disease, based upon crude mortality rates, which when compared to the age-adjusted rates indicate this is primarily due to their larger proportion of elderly.

These data were obtained from death certificates filed at the Iowa Department of Public Health via the National Center for Health Statistics and the SEER*Stat software program provided by the National Cancer Institute.

MAJOR CAUSES OF DEATH IN IOWA...

- ✓ Heart disease
- ✓ Cancer
- ✓ Stroke
- ✓ Chronic obstructive pulmonary disease
- ✓ Unintentional injuries (including MVC)
- ✓ Pneumonia/influenza
- ✓ Diabetes
- ✓ Alzheimer's disease
- ✓ Infectious/parasitic diseases
- ✓ Suicide

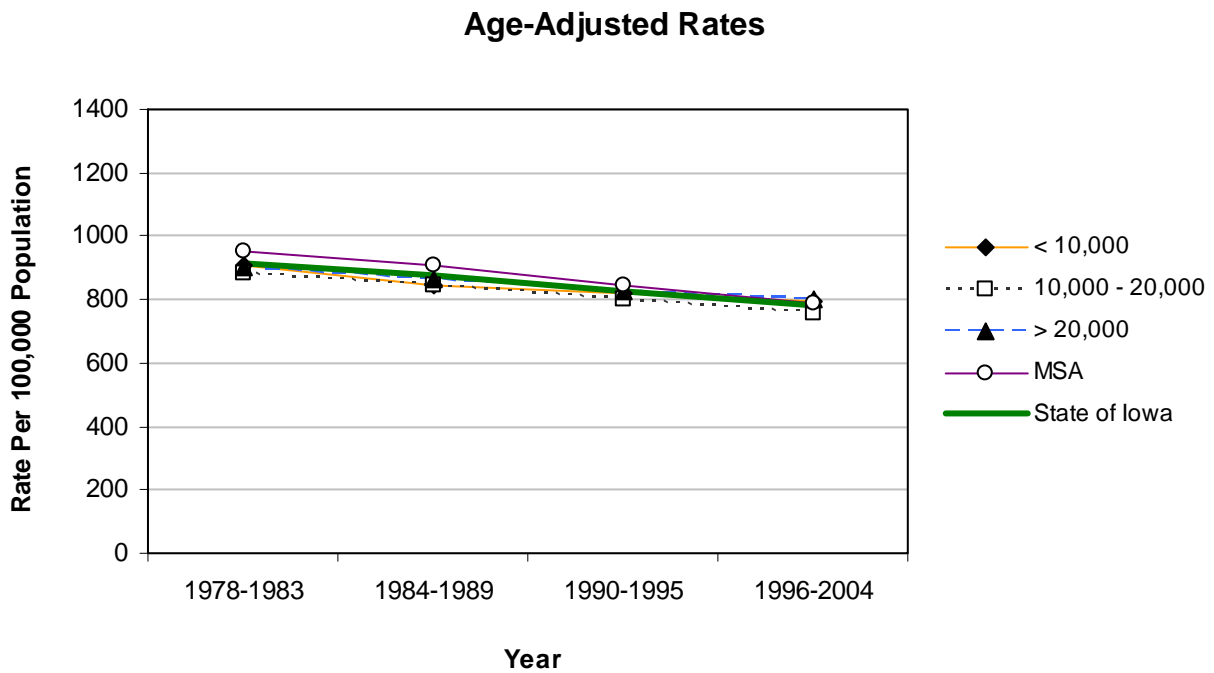
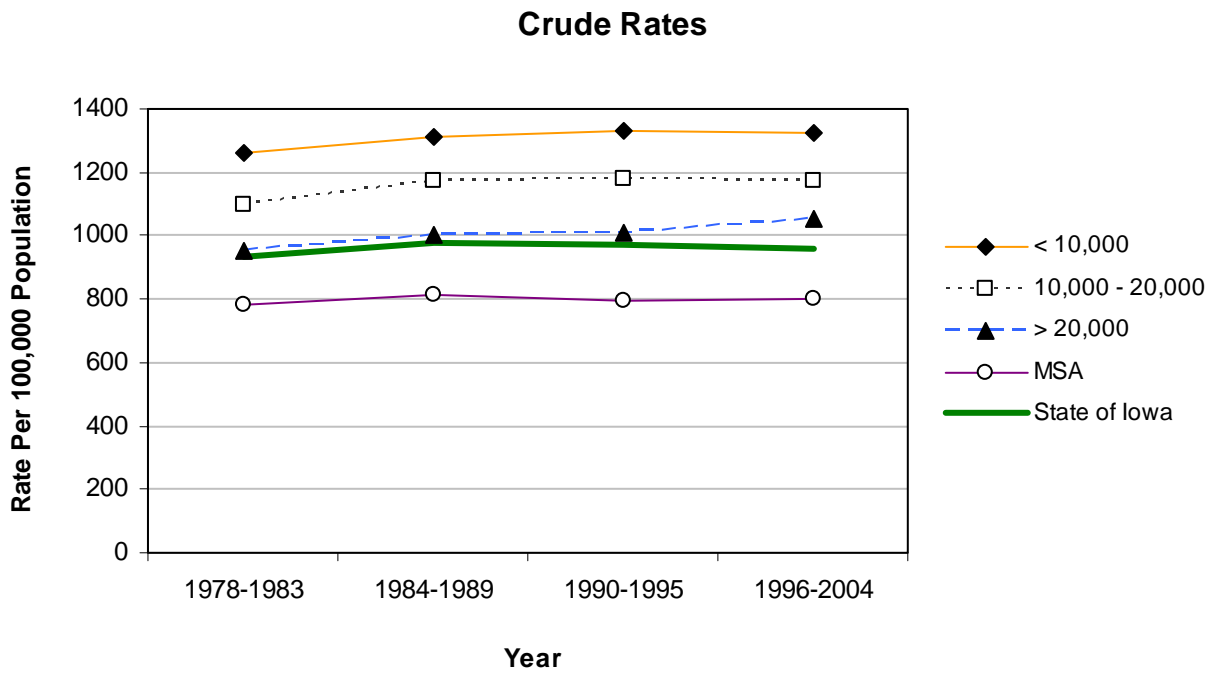
All Causes Mortality 1996-2004

	Average Population < 10,000				Average Population 10,000 - 20,000				Average Population > 20,000				MSA Counties																																																																								
	County	#	Crude ¹ (Rank ³)	Adjusted ^{1,2} (Rank ³)	County	#	Crude ¹ (Rank ³)	Adjusted ^{1,2} (Rank ³)	County	#	Crude ¹ (Rank ³)	Adjusted ^{1,2} (Rank ³)	County	#	Crude ¹ (Rank ³)	Adjusted ^{1,2} (Rank ³)																																																																					
Counties with Average Population < 10,000	Adair	1,057	1439.0 (05)	768.6 (52)	Monona	1,492	1669.4 (01)	859.7 (06)	Monroe	907	1262.7 (30)	838.5 (18)	Osceola	747	1189.1 (40)	780.0 (45)	Palo Alto	1,238	1368.8 (10)	809.9 (28)	Pocahontas	1,021	1320.2 (18)	765.2 (53)	Ringgold	746	1532.2 (03)	799.4 (31)	Taylor	872	1403.7 (07)	768.8 (51)	Van Buren	908	1300.7 (23)	844.5 (14)	Wayne	955	1573.5 (02)	854.9 (08)	Worth	933	1318.5 (19)	817.9 (22)	Total	18,953	1326.3	796.5																																					
	Counties with Average Population 10,000 - 20,000	Allamakee	1,485	1132.9 (51)	751.8 (66)	Hardin	2,272	1351.8 (11)	781.1 (44)	Humboldt	1,094	1179.1 (45)	710.9 (86)	Iowa	1,520	1077.3 (61)	731.7 (74)	Jefferson	1,354	926.1 (82)	757.3 (62)	Keokuk	1,213	1184.0 (42)	740.4 (69)	Kossuth	1,757	1147.5 (48)	714.6 (82)	Louisa	979	895.7 (88)	757.0 (64)	Lyon	1,092	1031.5 (70)	683.3 (96)	Mitchell	1,264	1290.5 (24)	710.7 (87)	Montgomery	1,509	1440.3 (04)	853.9 (09)	O'Brien	1,671	1233.8 (33)	708.0 (89)	Page	2,047	1346.1 (14)	837.5 (19)	Poweshiek	1,994	1171.9 (47)	789.1 (38)	Sac	1,465	1422.7 (06)	783.4 (41)	Shelby	1,407	1195.5 (39)	725.0 (79)	Tama	1,846	1141.0 (50)	755.7 (65)	Union	1,404	1274.7 (26)	841.3 (16)	Winnebago	1,258	1201.5 (37)	737.0 (72)	Wright	1,726	1348.2 (12)	757.3 (62)	Total	57,655	1175.1	754.4
		Counties with Average Population > 20,000	Boone	2,629	1118.0 (53)	819.0 (21)	Lee	3,898	1145.7 (49)	867.4 (05)	Mahaska	1,917	958.3 (78)	727.7 (77)	Marion	2,982	1033.3 (69)	783.8 (40)	Marshall	4,492	1270.9 (28)	962.9 (01)	Muscatine	3,399	904.4 (86)	844.0 (15)	Plymouth	2,208	990.5 (74)	760.9 (59)	Sioux	2,248	787.6 (94)	634.0 (99)	Wapello	3,839	1186.2 (41)	852.4 (11)	Webster	4,230	1183.1 (43)	849.1 (12)	Winneshiek	1,646	861.5 (90)	653.6 (98)	Total	62,007	1054.9	798.9																																			
			MSA Counties	Benton	2,042	891.6 (89)	711.4 (85)	Linn	12,856	747.5 (96)	735.8 (73)	Madison	1,344	1059.6 (65)	812.1 (26)	Mills	1,208	926.0 (83)	885.8 (03)	Polk	25,095	742.6 (97)	798.5 (32)	Pottawattamie	7,552	960.8 (77)	909.0 (02)	Scott	11,642	816.1 (92)	845.0 (13)	Story	4,099	574.8 (98)	655.2 (97)	Warren	2,949	804.0 (93)	810.1 (27)	Washington	2,078	1108.8 (55)	726.9 (78)	Woodbury	8,473	908.8 (85)	839.1 (17)	Total	112,479	799.6	785.7																																		
				State Total	251,094	955.5	781.3																																																																														

¹Rates per 100,000 population²Adjusted to year 2000 population³Rank among 99 counties

Source: State Health Registry of Iowa via NCI's SEER*Stat Program

All Causes Mortality by County Group 1978-2004



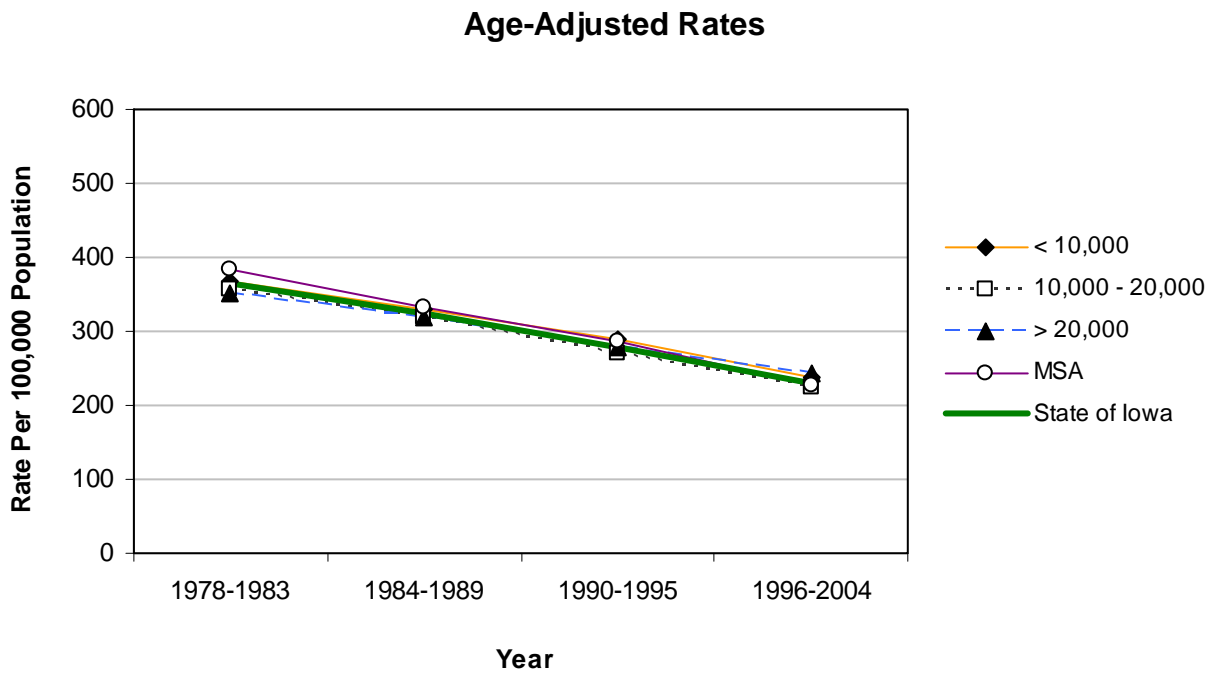
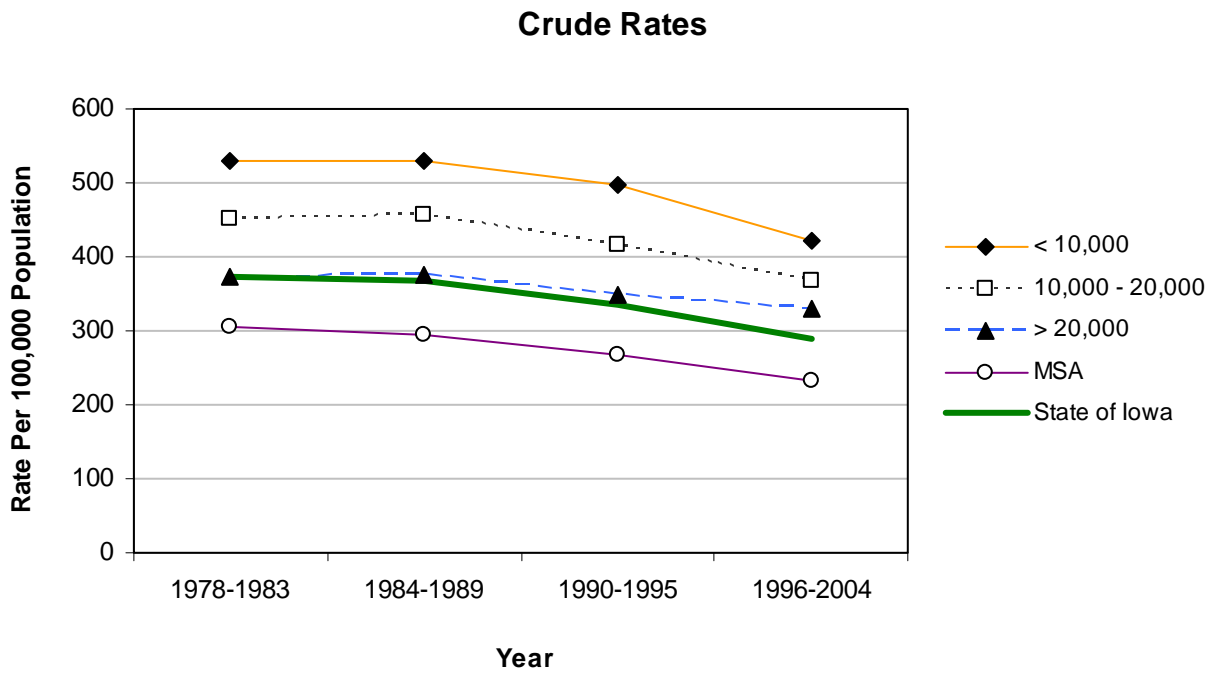
Heart Disease Mortality 1996-2004

	County	#	Crude ¹		Adjusted ^{1,2}		County	#	Crude ¹		Adjusted ^{1,2}	
			(Rank ³)	(Rank ³)	(Rank ³)	(Rank ³)			(Rank ³)	(Rank ³)		
Counties with Average Population < 10,000	Adair	325	442.4 (14)	227.3 (51)	Monona	441	493.4 (06)	230.7 (44)				
	Adams	163	407.6 (23)	231.4 (42)	Monroe	290	403.7 (24)	252.4 (21)				
	Audubon	222	365.9 (40)	184.6 (94)	Osceola	347	552.4 (02)	329.8 (02)				
	Clarke	296	364.9 (41)	239.1 (36)	Palo Alto	321	354.9 (47)	194.5 (84)				
	Davis	258	335.1 (58)	214.5 (72)	Pocahontas	298	385.3 (33)	213.6 (73)				
	Decatur	300	388.2 (29)	248.7 (23)	Ringgold	258	529.9 (03)	260.0 (14)				
	Fremont	254	355.8 (46)	218.2 (62)	Taylor	276	444.3 (13)	229.7 (46)				
	Howard	343	384.7 (34)	229.0 (47)	Van Buren	290	415.4 (19)	260.6 (13)				
	Ida	340	485.7 (08)	270.3 (09)	Wayne	303	499.3 (05)	258.6 (16)				
	Lucas	399	469.2 (10)	272.1 (08)	Worth	299	422.5 (17)	244.8 (26)				
					Total	6,023	421.5	238.0				
	Counties with Average Population 10,000 – 20,000	Allamakee	371	283.0 (82)	183.1 (95)	Hardin	812	483.1 (09)	263.7 (12)			
		Appanoose	726	590.6 (01)	338.5 (01)	Humboldt	348	375.1 (37)	212.9 (75)			
Butler		518	377.4 (35)	216.5 (66)	Iowa	418	296.2 (76)	190.2 (88)				
Calhoun		385	387.4 (30)	201.1 (82)	Jefferson	417	285.2 (80)	222.9 (58)				
Cass		527	400.6 (26)	221.3 (61)	Keokuk	354	345.5 (55)	202.6 (81)				
Cedar		448	274.4 (84)	191.0 (87)	Kossuth	458	299.1 (72)	179.8 (96)				
Cherokee		491	420.7 (18)	252.6 (20)	Louisa	289	264.4 (86)	216.3 (67)				
Chickasaw		458	390.4 (28)	258.2 (17)	Lyon	360	340.1 (57)	215.8 (69)				
Clay		454	291.3 (78)	193.4 (85)	Mitchell	481	491.1 (07)	241.6 (31)				
Clayton		562	334.8 (59)	218.2 (62)	Montgomery	410	391.3 (27)	213.4 (74)				
Crawford		474	311.6 (68)	214.6 (71)	O'Brien	554	409.1 (21)	217.8 (64)				
Delaware		408	247.5 (89)	197.8 (83)	Page	621	408.4 (22)	239.4 (34)				
Dickinson		519	353.5 (50)	211.2 (78)	Poweshiek	610	358.5 (43)	227.4 (50)				
Emmet		370	373.4 (38)	222.1 (60)	Sac	438	425.3 (16)	222.6 (59)				
Floyd		607	401.3 (25)	236.0 (37)	Shelby	487	413.8 (20)	231.9 (41)				
Franklin		375	386.5 (32)	232.8 (39)	Tama	555	343.0 (56)	211.7 (76)				
Greene		422	457.0 (12)	241.4 (32)	Union	559	507.5 (04)	304.4 (04)				
Hamilton		525	357.0 (45)	232.8 (39)	Winnebago	394	376.3 (36)	211.4 (77)				
Hancock	383	354.9 (47)	223.0 (57)	Wright	447	349.1 (53)	185.1 (92)					
				Total	18,035	367.6	223.0					
Counties with Average Population > 20,000	Boone	868	369.1 (39)	253.1 (19)	Lee	1,205	354.2 (49)	259.9 (15)				
	Buchanan	570	301.2 (71)	246.1 (25)	Mahaska	619	309.4 (70)	225.2 (55)				
	Buena Vista	579	316.3 (67)	214.8 (70)	Marion	854	295.9 (77)	217.5 (65)				
	Carroll	629	326.9 (63)	203.3 (79)	Marshall	1,262	357.1 (44)	264.4 (11)				
	Cerro Gordo	1,460	351.6 (52)	244.6 (27)	Muscatine	929	247.2 (90)	228.8 (48)				
	Clinton	1,932	427.7 (15)	325.6 (03)	Plymouth	742	332.9 (60)	243.1 (29)				
	Des Moines	1,179	311.6 (68)	226.8 (54)	Sioux	677	237.2 (92)	184.8 (93)				
	Fayette	695	353.3 (51)	223.6 (56)	Wapello	1,178	364.0 (42)	256.0 (18)				
	Henry	586	322.3 (65)	244.0 (28)	Webster	1,384	387.1 (31)	267.3 (10)				
	Jackson	631	346.4 (54)	241.9 (30)	Winneshiek	463	242.3 (91)	179.2 (97)				
	Jasper	988	296.3 (75)	228.0 (49)	Total	19,430	330.5	242.1				
MSA Counties	Benton	757	330.5 (61)	251.2 (22)	Linn	3,273	190.3 (97)	185.5 (91)				
	Black Hawk	3,024	264.4 (86)	226.9 (52)	Madison	318	250.7 (88)	186.6 (89)				
	Bremer	688	327.2 (62)	226.9 (52)	Mills	380	291.3 (78)	275.2 (07)				
	Dallas	824	220.2 (96)	230.9 (43)	Polk	7,490	221.6 (95)	239.3 (35)				
	Dubuque	2,387	296.4 (74)	240.5 (33)	Pottawattamie	2,345	298.4 (73)	281.7 (06)				
	Grundy	361	325.3 (64)	191.9 (86)	Scott	3,219	225.6 (94)	234.1 (38)				
	Guthrie	286	279.6 (83)	172.3 (98)	Story	1,181	165.6 (98)	186.4 (90)				
	Harrison	645	459.1 (11)	295.8 (05)	Warren	843	229.8 (93)	230.2 (45)				
	Johnson	1,087	108.9 (99)	166.5 (99)	Washington	604	322.3 (65)	202.9 (80)				
	Jones	520	283.6 (81)	216.1 (68)	Woodbury	2,549	273.4 (85)	248.2 (24)				
					Total	32,781	233.0	226.9				
	State Total	76,269	290.2	230.7								

¹Rates per 100,000 population²Adjusted to year 2000 population³Rank among 99 counties

Source: State Health Registry of Iowa via NCI's SEER*Stat Program

Heart Disease Mortality by County Group 1978-2004



Stroke Mortality 1996-2004

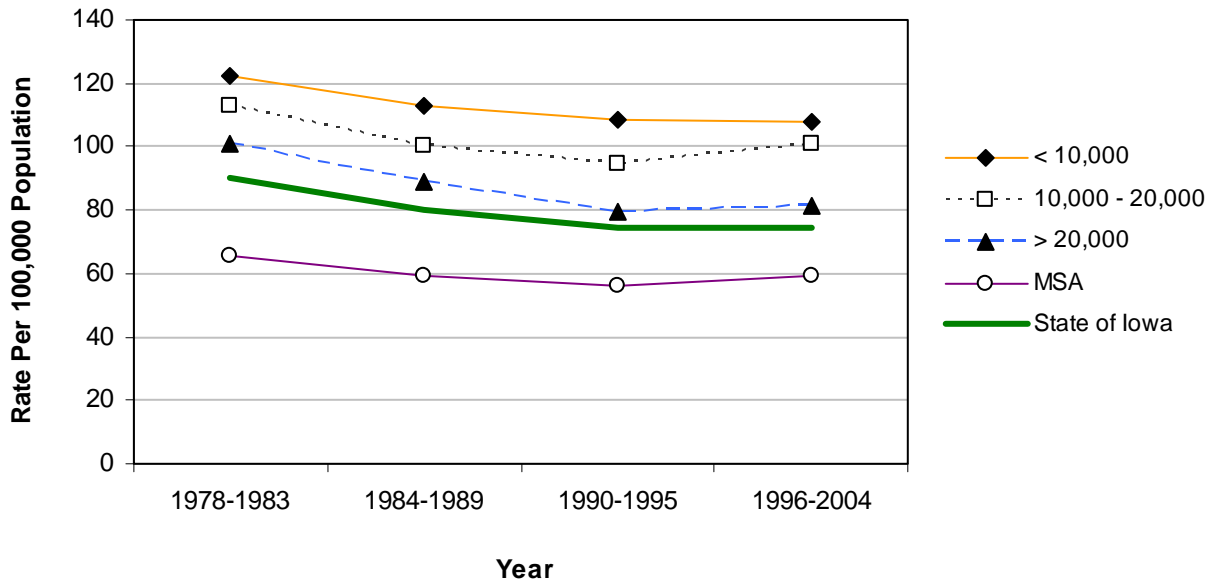
	Counties with Average Population < 10,000				Counties with Average Population 10,000 - 20,000				Counties with Average Population > 20,000				MSA Counties																																																																								
	County	#	Crude ¹ (Rank ³)	Adjusted ^{1,2} (Rank ³)	County	#	Crude ¹ (Rank ³)	Adjusted ^{1,2} (Rank ³)	County	#	Crude ¹ (Rank ³)	Adjusted ^{1,2} (Rank ³)	County	#	Crude ¹ (Rank ³)	Adjusted ^{1,2} (Rank ³)																																																																					
Counties with Average Population < 10,000	Adair	69	93.9 (41)	42.8 (92)	Monona	109	122.0 (14)	54.3 (54)	Monroe	74	103.0 (31)	60.0 (35)	Osceola	58	92.3 (44)	54.8 (50)	Palo Alto	116	128.3 (10)	65.4 (23)	Pocahontas	107	138.4 (05)	68.2 (13)	Ringgold	49	100.6 (36)	51.4 (67)	Taylor	64	103.0 (31)	49.0 (76)	Van Buren	78	111.7 (22)	63.7 (27)	Wayne	93	153.2 (02)	68.0 (15)	Worth	102	144.1 (03)	78.9 (03)	Total	1,545	108.1	57.5																																					
	Counties with Average Population 10,000 - 20,000	Allamakee	159	121.3 (15)	74.0 (08)	Hardin	188	111.9 (21)	57.0 (44)	Humboldt	68	73.3 (75)	40.3 (96)	Iowa	160	113.4 (17)	67.8 (16)	Jefferson	154	105.3 (29)	79.9 (02)	Keokuk	85	83.0 (57)	47.6 (84)	Kossuth	166	108.4 (25)	61.2 (32)	Louisa	87	79.6 (65)	62.4 (31)	Lyon	110	103.9 (30)	63.3 (28)	Mitchell	109	111.3 (23)	54.6 (51)	Montgomery	179	170.9 (01)	87.3 (01)	O'Brien	124	91.6 (46)	47.9 (83)	Page	155	101.9 (35)	57.0 (44)	Poweshiek	218	128.1 (11)	78.5 (04)	Sac	145	140.8 (04)	66.0 (20)	Shelby	89	75.6 (73)	41.0 (95)	Tama	129	79.7 (63)	47.2 (88)	Union	89	80.8 (61)	48.3 (81)	Winnebago	128	122.3 (13)	65.7 (22)	Wright	145	113.3 (18)	53.8 (56)	Total	4,934	100.6	58.0
		Counties with Average Population > 20,000	Boone	184	78.2 (69)	53.3 (60)	Lee	270	79.4 (66)	56.4 (46)	Mahaska	136	68.0 (82)	47.3 (87)	Marion	233	80.7 (62)	55.1 (49)	Marshall	299	84.6 (52)	60.9 (33)	Muscatine	264	70.2 (80)	64.1 (25)	Plymouth	161	72.2 (77)	50.8 (70)	Sioux	164	57.5 (91)	43.7 (91)	Wapello	331	102.3 (33)	66.2 (19)	Webster	317	88.7 (48)	58.4 (41)	Winneshiek	143	74.8 (74)	51.8 (65)	Total	4,784	81.4	57.1																																			
			MSA Counties	Benton	115	50.2 (96)	39.5 (97)	Linn	886	51.5 (94)	49.8 (74)	Madison	104	82.0 (60)	57.5 (43)	Mills	69	52.9 (93)	49.4 (75)	Polk	1,581	46.8 (97)	50.4 (73)	Pottawattamie	487	62.0 (87)	58.7 (37)	Scott	1,024	71.8 (79)	74.5 (07)	Story	316	44.3 (98)	48.9 (77)	Warren	245	66.8 (83)	66.8 (17)	Washington	147	78.4 (68)	47.0 (89)	Woodbury	548	58.8 (88)	52.6 (62)	Total	8,366	59.5	57.1																																		
				State Total	19,629	74.7	57.4																																																																														

¹Rates per 100,000 population²Adjusted to year 2000 population³Rank among 99 counties

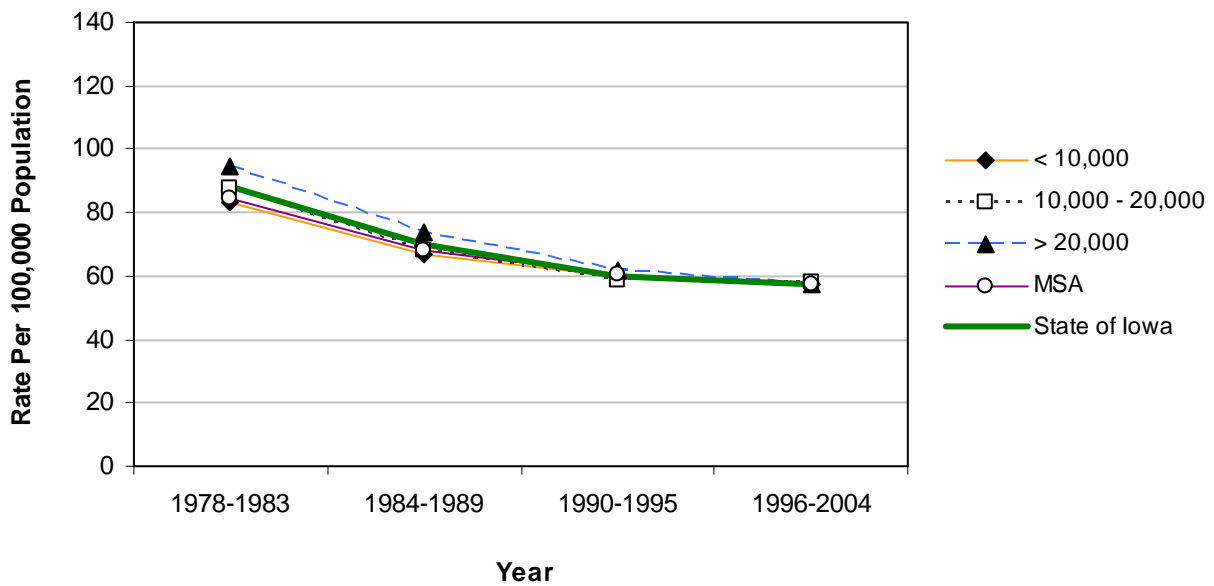
Source: State Health Registry of Iowa via NCI's SEER*Stat Program

Stroke Mortality by County Group 1978-2004

Crude Rates



Age-Adjusted Rates



Chronic Obstructive Pulmonary Disease Mortality 1996-2004

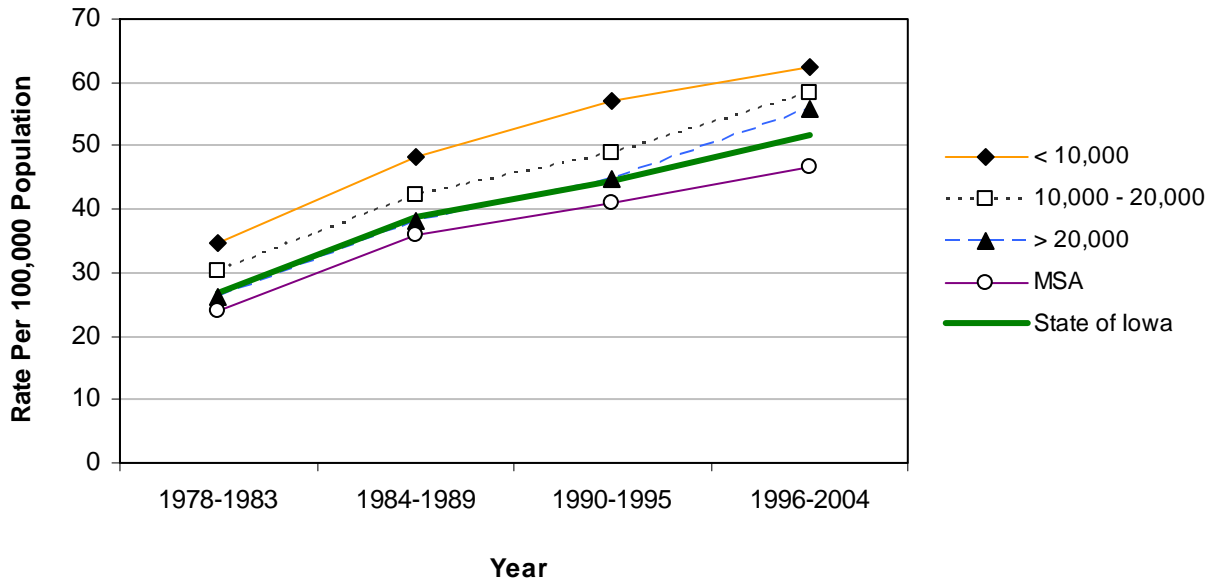
	Average Population < 10,000				Average Population 10,000 - 20,000				Average Population > 20,000				MSA Counties																																																																								
	County	#	Crude ¹ (Rank ³)	Adjusted ^{1,2} (Rank ³)	County	#	Crude ¹ (Rank ³)	Adjusted ^{1,2} (Rank ³)	County	#	Crude ¹ (Rank ³)	Adjusted ^{1,2} (Rank ³)	County	#	Crude ¹ (Rank ³)	Adjusted ^{1,2} (Rank ³)																																																																					
Counties with Average Population < 10,000	Adair	33	44.9 (82)	25.2 (94)	Monona	86	96.2 (04)	50.8 (11)	Monroe	56	78.0 (11)	50.1 (14)	Osceola	16	25.5 (97)	16.0 (99)	Palo Alto	74	81.8 (09)	46.1 (22)	Pocahontas	42	54.3 (50)	30.9 (82)	Ringgold	36	73.9 (13)	36.9 (54)	Taylor	60	96.6 (03)	49.3 (19)	Van Buren	32	45.8 (79)	29.2 (86)	Wayne	37	61.0 (34)	33.7 (69)	Worth	35	49.5 (63)	31.5 (79)	Total	893	62.5	37.1																																					
	Counties with Average Population 10,000 - 20,000	Allamakee	59	45.0 (81)	29.6 (84)	Hardin	98	58.3 (39)	33.5 (70)	Humboldt	76	81.9 (08)	47.8 (20)	Iowa	68	48.2 (68)	33.4 (71)	Jefferson	47	32.1 (95)	28.5 (91)	Keokuk	64	62.5 (31)	37.8 (50)	Kossuth	75	49.0 (66)	28.6 (90)	Louisa	43	39.3 (91)	34.7 (65)	Lyon	41	38.7 (92)	25.5 (93)	Mitchell	45	45.9 (78)	24.9 (96)	Montgomery	102	97.4 (01)	59.4 (04)	O'Brien	88	65.0 (25)	34.4 (66)	Page	111	73.0 (15)	44.5 (28)	Poweshiek	121	71.1 (18)	49.9 (15)	Sac	74	71.9 (16)	40.8 (36)	Shelby	66	56.1 (44)	35.2 (62)	Tama	88	54.4 (49)	35.7 (59)	Union	67	60.8 (35)	41.0 (35)	Winnebago	38	36.3 (93)	23.8 (97)	Wright	86	67.2 (20)	37.4 (52)	Total	2,858	58.3	37.1
		Counties with Average Population > 20,000	Boone	125	53.2 (53)	39.7 (42)	Lee	191	56.1 (44)	42.8 (30)	Mahaska	87	43.5 (85)	32.8 (74)	Marion	154	53.4 (52)	42.0 (32)	Marshall	316	89.4 (06)	67.1 (01)	Muscatine	197	52.4 (58)	49.7 (17)	Plymouth	95	42.6 (86)	33.2 (72)	Sioux	81	28.4 (96)	23.1 (98)	Wapello	206	63.7 (29)	45.1 (27)	Webster	285	79.7 (10)	56.4 (07)	Winneshiek	79	41.3 (88)	31.0 (81)	Total	3,278	55.8	42.0																																			
			MSA Counties	Benton	105	45.8 (79)	36.8 (55)	Linn	864	50.2 (61)	50.4 (13)	Madison	63	49.7 (62)	39.8 (41)	Mills	80	61.3 (33)	60.1 (03)	Polk	1,398	41.4 (87)	45.8 (23)	Pottawattamie	513	65.3 (24)	60.8 (02)	Scott	736	51.6 (59)	53.9 (09)	Story	178	25.0 (98)	29.2 (86)	Warren	172	46.9 (75)	49.4 (18)	Washington	162	86.4 (07)	54.1 (08)	Woodbury	525	56.3 (43)	52.9 (10)	Total	6,554	46.6	46.6																																		
				State Total	13,583	51.7	42.5																																																																														

¹Rates per 100,000 population²Adjusted to year 2000 population³Rank among 99 counties

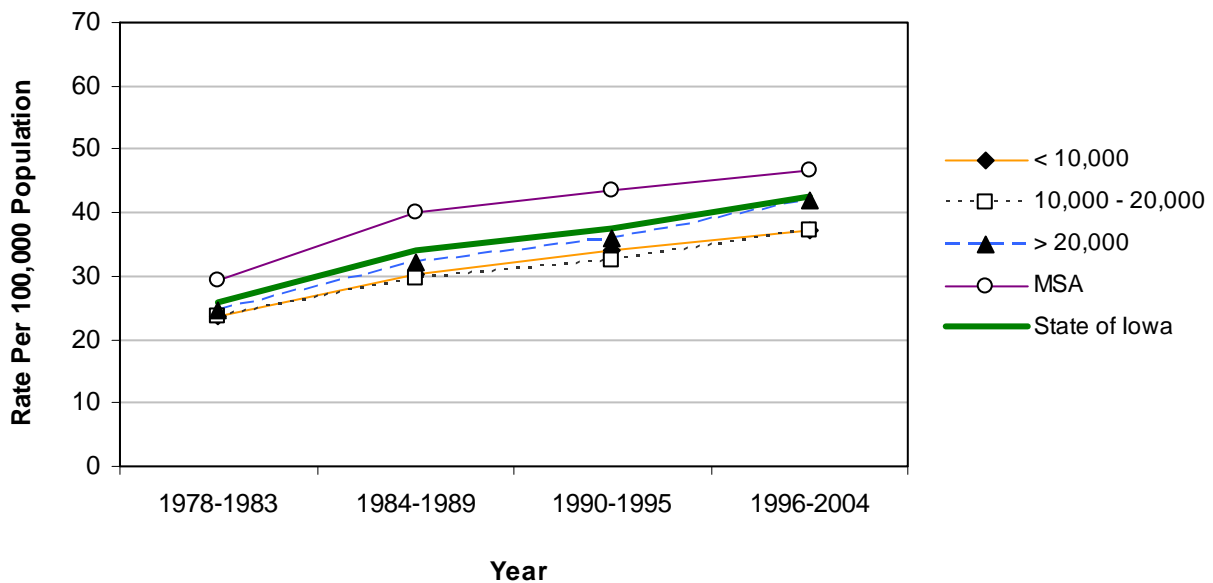
Source: State Health Registry of Iowa via NCI's SEER*Stat Program

Chronic Obstructive Pulmonary Disease Mortality by County Group 1978-2004

Crude Rates



Age-Adjusted Rates



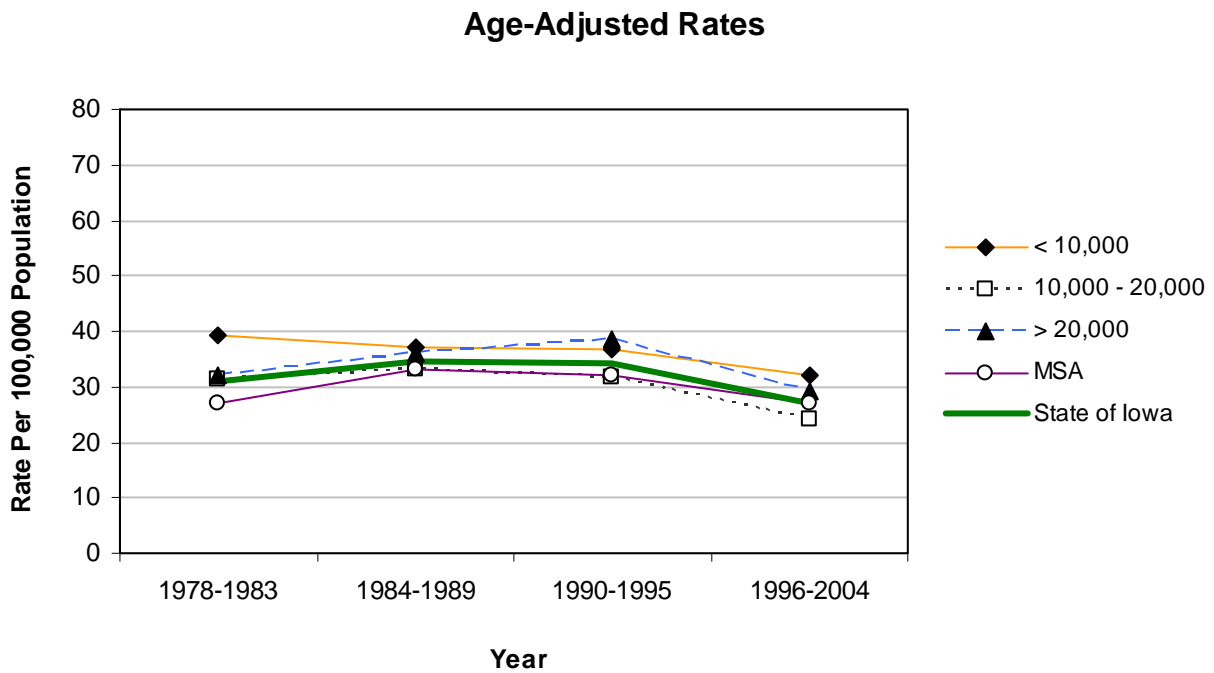
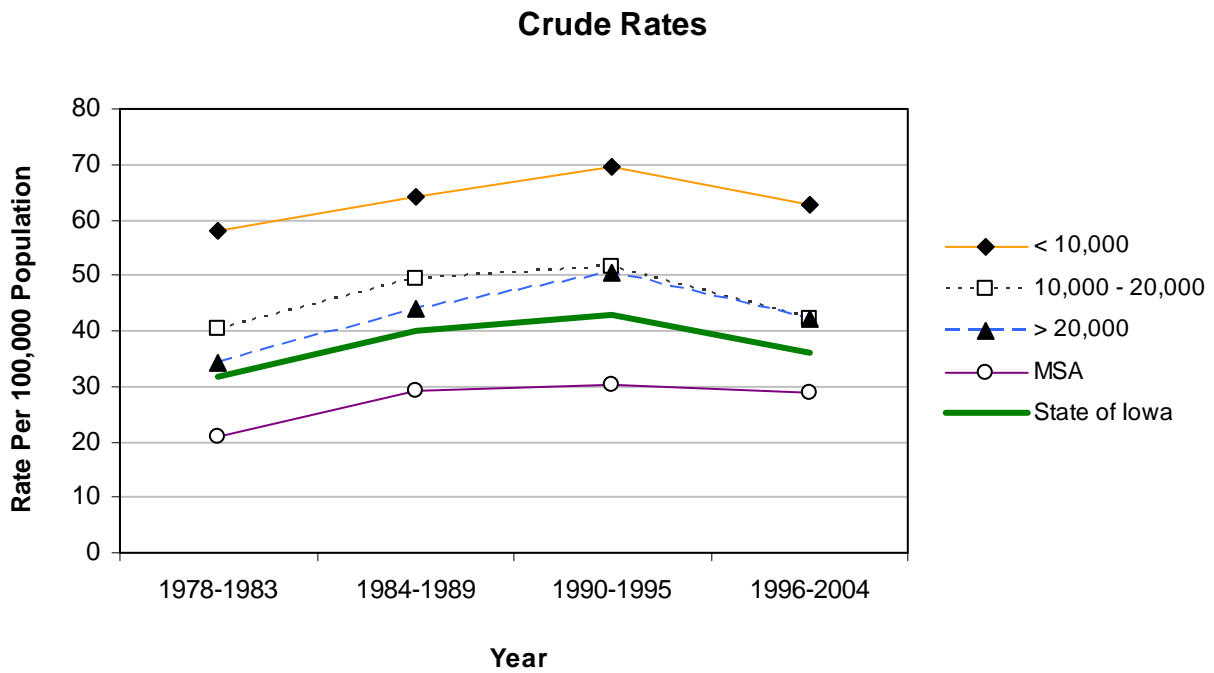
Pneumonia/Influenza Mortality 1996-2004

	Average Population < 10,000				Average Population 10,000 - 20,000				Average Population > 20,000				MSA Counties				
	County	#	Crude ¹ (Rank ³)	Adjusted ^{1,2} (Rank ³)	County	#	Crude ¹ (Rank ³)	Adjusted ^{1,2} (Rank ³)	County	#	Crude ¹ (Rank ³)	Adjusted ^{1,2} (Rank ³)	County	#	Crude ¹ (Rank ³)	Adjusted ^{1,2} (Rank ³)	
Counties with Average Population < 10,000	Adair	148	201.5 (01)	84.2 (01)	Monona	79	88.4 (02)	38.0 (12)	Monroe	43	59.9 (10)	34.5 (19)	Osceola	26	41.4 (52)	24.8 (54)	
	Adams	11	27.5 (82)	14.0 (96)	Osceola	26	41.4 (52)	24.8 (54)	Palo Alto	43	47.5 (35)	25.3 (49)	Pocahontas	42	54.3 (21)	27.1 (40)	
	Audubon	29	47.8 (34)	20.9 (75)	Palo Alto	43	47.5 (35)	25.3 (49)	Ringgold	16	32.9 (72)	16.5 (88)	Taylor	35	56.3 (17)	25.3 (49)	
	Clarke	38	46.8 (39)	26.1 (43)	Pocahontas	42	54.3 (21)	27.1 (40)	Wayne	31	51.1 (27)	22.7 (67)	Worth	26	36.7 (65)	19.2 (79)	
	Davis	45	58.4 (14)	36.0 (14)	Ringgold	16	32.9 (72)	16.5 (88)	Total	896	62.7	31.9					
	Decatur	62	80.2 (04)	49.1 (02)	Taylor	35	56.3 (17)	25.3 (49)									
	Fremont	59	82.6 (03)	46.2 (03)	Van Buren	39	55.9 (19)	30.3 (31)									
	Howard	43	48.2 (33)	25.4 (46)	Wayne	31	51.1 (27)	22.7 (67)									
	Ida	37	52.9 (24)	27.5 (38)	Worth	26	36.7 (65)	19.2 (79)									
	Lucas	44	51.7 (26)	25.7 (45)	Total	896	62.7	31.9									
	Counties with Average Population 10,000 - 20,000	Allamakee	35	26.7 (83)	15.8 (91)	Hardin	65	38.7 (61)	19.2 (79)	Humboldt	39	42.0 (50)	22.7 (67)	Iowa	79	56.0 (18)	31.4 (27)
		Appanoose	66	53.7 (23)	31.5 (26)	Humboldt	39	42.0 (50)	22.7 (67)	Iowa	79	56.0 (18)	31.4 (27)	Jefferson	56	38.3 (62)	29.8 (33)
Butler		56	40.8 (54)	22.5 (69)	Iowa	79	56.0 (18)	31.4 (27)	Jefferson	56	38.3 (62)	29.8 (33)	Keokuk	46	44.9 (43)	24.1 (59)	
Calhoun		54	54.3 (21)	24.0 (60)	Keokuk	46	44.9 (43)	24.1 (59)	Kossuth	61	39.8 (57)	22.9 (64)	Louisa	49	44.8 (44)	34.7 (18)	
Cass		66	50.2 (29)	26.3 (42)	Kossuth	61	39.8 (57)	22.9 (64)	Louisa	49	44.8 (44)	34.7 (18)	Lyon	31	29.3 (79)	16.3 (89)	
Cedar		39	23.9 (90)	15.3 (95)	Louisa	49	44.8 (44)	34.7 (18)	Lyon	31	29.3 (79)	16.3 (89)	Mitchell	34	34.7 (69)	16.6 (87)	
Cherokee		53	45.4 (42)	26.1 (43)	Mitchell	34	34.7 (69)	16.6 (87)	Montgomery	52	49.6 (30)	25.4 (46)	O'Brien	77	56.9 (16)	27.4 (39)	
Chickasaw		26	22.2 (94)	13.9 (97)	Montgomery	52	49.6 (30)	25.4 (46)	O'Brien	77	56.9 (16)	27.4 (39)	Page	111	73.0 (05)	41.9 (07)	
Clay		48	30.8 (76)	19.2 (79)	O'Brien	77	56.9 (16)	27.4 (39)	Page	111	73.0 (05)	41.9 (07)	Poweshiek	67	39.4 (58)	22.8 (66)	
Clayton		93	55.4 (20)	33.0 (21)	Page	111	73.0 (05)	41.9 (07)	Poweshiek	67	39.4 (58)	22.8 (66)	Sac	69	67.0 (07)	32.2 (23)	
Crawford		33	21.7 (95)	13.7 (98)	Poweshiek	67	39.4 (58)	22.8 (66)	Sac	69	67.0 (07)	32.2 (23)	Shelby	68	57.8 (15)	29.9 (32)	
Delaware		44	26.7 (83)	21.0 (74)	Sac	69	67.0 (07)	32.2 (23)	Shelby	68	57.8 (15)	29.9 (32)	Tama	72	44.5 (45)	24.2 (58)	
Dickinson		56	38.1 (63)	21.8 (73)	Shelby	68	57.8 (15)	29.9 (32)	Tama	72	44.5 (45)	24.2 (58)	Union	31	28.1 (81)	17.1 (85)	
Emmet		35	35.3 (67)	17.8 (84)	Tama	72	44.5 (45)	24.2 (58)	Union	31	28.1 (81)	17.1 (85)	Winnebago	42	40.1 (55)	20.7 (76)	
Floyd		55	36.4 (66)	21.9 (72)	Union	31	28.1 (81)	17.1 (85)	Winnebago	42	40.1 (55)	20.7 (76)	Wright	82	64.0 (08)	32.2 (23)	
Franklin		37	38.1 (63)	23.4 (62)	Winnebago	42	40.1 (55)	20.7 (76)	Wright	82	64.0 (08)	32.2 (23)	Total	2,064	42.1	24.0	
Greene		30	32.5 (73)	16.3 (89)	Wright	82	64.0 (08)	32.2 (23)	Total	2,064	42.1	24.0					
Hamilton		57	38.8 (60)	24.7 (55)													
Hancock	50	46.3 (40)	27.7 (36)														
Counties with Average Population > 20,000	Boone	111	47.2 (37)	30.4 (30)	Lee	177	52.0 (25)	35.5 (16)	Mahaska	62	31.0 (74)	20.7 (76)	Marion	146	50.6 (28)	34.9 (17)	
	Buchanan	47	24.8 (86)	20.1 (78)	Mahaska	62	31.0 (74)	20.7 (76)	Marion	146	50.6 (28)	34.9 (17)	Marshall	157	44.4 (46)	31.7 (25)	
	Buena Vista	64	35.0 (68)	22.9 (64)	Marion	146	50.6 (28)	34.9 (17)	Marshall	157	44.4 (46)	31.7 (25)	Muscatine	162	43.1 (48)	38.3 (10)	
	Carroll	93	48.3 (31)	27.6 (37)	Marshall	157	44.4 (46)	31.7 (25)	Muscatine	162	43.1 (48)	38.3 (10)	Plymouth	48	21.5 (96)	15.5 (94)	
	Cerro Gordo	166	40.0 (56)	27.1 (40)	Muscatine	162	43.1 (48)	38.3 (10)	Plymouth	48	21.5 (96)	15.5 (94)	Sioux	98	34.3 (70)	25.2 (52)	
	Clinton	111	24.6 (87)	18.3 (82)	Plymouth	48	21.5 (96)	15.5 (94)	Sioux	98	34.3 (70)	25.2 (52)	Wapello	193	59.6 (12)	38.7 (09)	
	Des Moines	156	41.2 (53)	28.7 (34)	Sioux	98	34.3 (70)	25.2 (52)	Wapello	193	59.6 (12)	38.7 (09)	Webster	240	67.1 (06)	43.0 (05)	
	Fayette	117	59.5 (13)	33.7 (20)	Wapello	193	59.6 (12)	38.7 (09)	Webster	240	67.1 (06)	43.0 (05)	Winneshiek	63	33.0 (71)	22.4 (70)	
	Henry	80	44.0 (47)	30.8 (28)	Webster	240	67.1 (06)	43.0 (05)	Winneshiek	63	33.0 (71)	22.4 (70)	Total	2,473	42.1	29.2	
	Jackson	84	46.1 (41)	30.5 (29)	Winneshiek	63	33.0 (71)	22.4 (70)	Total	2,473	42.1	29.2					
	Jasper	98	29.4 (78)	22.1 (71)	Total	2,473	42.1	29.2									
MSA Counties	Benton	51	22.3 (93)	16.7 (86)	Linn	413	24.0 (89)	23.0 (63)	Madison	76	59.9 (10)	39.9 (08)	Mills	63	48.3 (31)	45.5 (04)	
	Black Hawk	214	18.7 (97)	15.7 (92)	Madison	76	59.9 (10)	39.9 (08)	Mills	63	48.3 (31)	45.5 (04)	Polk	1,047	31.0 (74)	32.9 (22)	
	Bremer	39	18.6 (98)	12.0 (99)	Mills	63	48.3 (31)	45.5 (04)	Polk	1,047	31.0 (74)	32.9 (22)	Pottawattamie	236	30.0 (77)	28.5 (35)	
	Dallas	156	41.7 (51)	42.7 (06)	Polk	1,047	31.0 (74)	32.9 (22)	Pottawattamie	236	30.0 (77)	28.5 (35)	Scott	335	23.5 (91)	24.3 (57)	
	Dubuque	382	47.4 (36)	36.3 (13)	Pottawattamie	236	30.0 (77)	28.5 (35)	Scott	335	23.5 (91)	24.3 (57)	Story	173	24.3 (88)	25.3 (49)	
	Grundy	52	46.9 (38)	24.7 (55)	Scott	335	23.5 (91)	24.3 (57)	Story	173	24.3 (88)	25.3 (49)	Warren	143	39.0 (59)	38.3 (10)	
	Guthrie	44	43.0 (49)	24.9 (53)	Story	173	24.3 (88)	25.3 (49)	Warren	143	39.0 (59)	38.3 (10)	Washington	118	63.0 (09)	35.9 (15)	
	Harrison	33	23.5 (91)	15.6 (93)	Warren	143	39.0 (59)	38.3 (10)	Washington	118	63.0 (09)	35.9 (15)	Woodbury	268	28.7 (80)	25.4 (46)	
	Johnson	154	15.4 (99)	23.6 (61)	Washington	118	63.0 (09)	35.9 (15)	Woodbury	268	28.7 (80)	25.4 (46)	Total	4,043	28.7	27.2	
	Jones	46	25.1 (85)	18.3 (82)	Woodbury	268	28.7 (80)	25.4 (46)	Total	4,043	28.7	27.2					
State Total	9,476	36.1	27.2														

¹Rates per 100,000 population²Adjusted to year 2000 population³Rank among 99 counties

Source: State Health Registry of Iowa via NCI's SEER*Stat Program

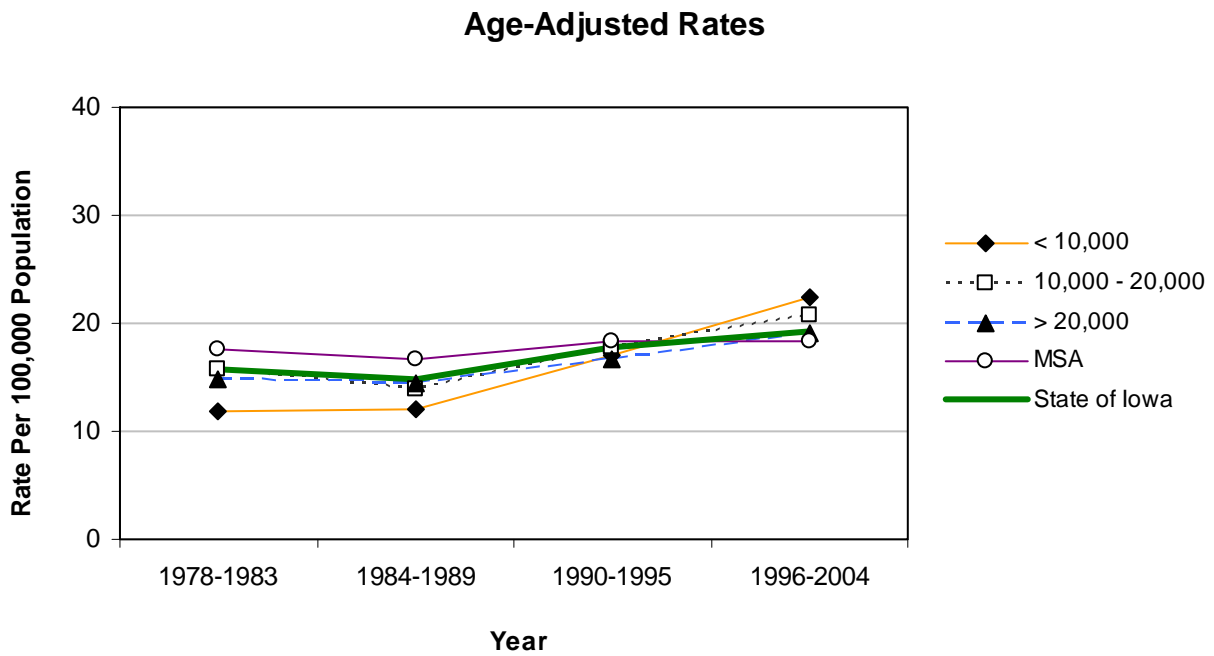
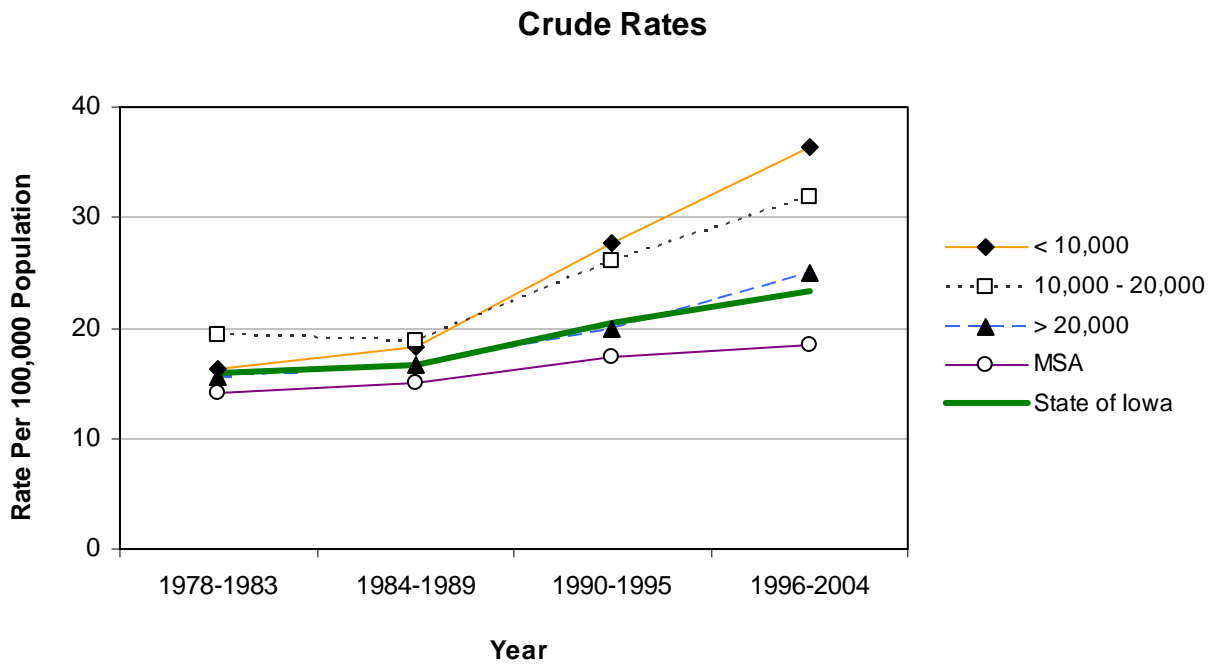
Pneumonia/Influenza Mortality by County Group 1978-2004



Diabetes Mellitus Mortality 1996-2004

	Average Population < 10,000				Average Population 10,000 - 20,000				Average Population > 20,000				MSA Counties																																																																															
	County	#	Crude ¹ (Rank ³)	Adjusted ^{1,2} (Rank ³)	County	#	Crude ¹ (Rank ³)	Adjusted ^{1,2} (Rank ³)	County	#	Crude ¹ (Rank ³)	Adjusted ^{1,2} (Rank ³)	County	#	Crude ¹ (Rank ³)	Adjusted ^{1,2} (Rank ³)																																																																												
Counties with Average Population < 10,000	Adair	21	28.6 (50)	16.1 (76)	Monona	50	55.9 (03)	31.6 (04)	Monroe	13	18.1 (88)	12.9 (91)	Osceola	20	31.8 (34)	21.1 (43)	Palo Alto	41	45.3 (10)	29.9 (08)	Pocahontas	23	29.7 (47)	18.1 (61)	Ringgold	31	63.7 (01)	33.9 (02)	Taylor	28	45.1 (11)	27.0 (11)	Van Buren	29	41.5 (14)	25.3 (17)	Wayne	33	54.4 (04)	29.9 (08)	Worth	20	28.3 (52)	18.2 (59)																																																
	Adams	10	25.0 (63)	18.7 (57)	Hardin	63	37.5 (19)	21.3 (39)	Humboldt	20	21.6 (72)	14.3 (87)	Iowa	42	29.8 (46)	21.2 (40)	Jefferson	46	31.5 (37)	26.1 (15)	Keokuk	39	38.1 (17)	24.7 (22)	Kossuth	37	24.2 (65)	14.9 (84)	Louisa	22	20.1 (80)	17.2 (69)	Lyon	32	30.2 (42)	19.6 (51)	Mitchell	25	25.5 (62)	14.2 (88)	Montgomery	53	50.6 (05)	30.5 (05)	O'Brien	36	26.6 (57)	15.0 (82)	Page	67	44.1 (12)	26.3 (13)	Poweshiek	46	27.0 (55)	21.2 (40)	Sac	40	38.8 (16)	23.2 (29)	Shelby	32	27.2 (54)	17.3 (67)	Tama	54	33.4 (29)	22.2 (37)	Union	36	32.7 (31)	23.0 (31)	Winnebago	38	36.3 (22)	23.2 (29)	Wright	46	35.9 (25)	21.8 (38)												
	Audubon	22	36.3 (22)	21.2 (40)	Chickasaw	24	20.5 (77)	14.2 (88)	Crawford	55	36.2 (24)	24.5 (24)	Delaware	38	23.0 (70)	18.6 (58)	Dickinson	49	33.4 (29)	20.8 (44)	Emmet	59	59.5 (02)	35.0 (01)	Floyd	27	17.8 (89)	12.6 (93)	Franklin	19	19.6 (82)	12.9 (91)	Greene	13	14.1 (97)	10.0 (98)	Hamilton	68	46.2 (08)	30.1 (07)	Hancock	34	31.5 (37)	20.4 (46)	Lee	82	24.1 (66)	17.8 (63)	Mahaska	41	20.5 (77)	16.3 (75)	Marion	75	26.0 (59)	20.2 (48)	Marshall	115	32.5 (32)	25.0 (20)	Muscatine	69	18.4 (87)	17.3 (67)	Plymouth	83	37.2 (21)	28.7 (10)	Sioux	57	20.0 (81)	16.7 (73)	Wapello	121	37.4 (20)	26.2 (14)	Webster	55	15.4 (94)	11.5 (97)	Winneshiek	45	23.6 (68)	17.8 (63)								
	Clarke	21	25.9 (61)	17.9 (62)	Clay	54	34.6 (28)	25.0 (20)	Jasper	64	19.2 (83)	14.8 (85)	Benton	55	24.0 (67)	19.5 (52)	Black Hawk	244	21.3 (73)	18.8 (56)	Bremer	33	15.7 (93)	12.3 (94)	Dallas	59	15.8 (92)	16.8 (71)	Dubuque	151	18.8 (84)	16.0 (77)	Grundy	31	27.9 (53)	16.8 (71)	Guthrie	31	30.3 (41)	18.9 (55)	Harrison	53	37.7 (18)	25.8 (16)	Johnson	101	10.1 (98)	15.7 (79)	Jones	58	31.6 (35)	24.3 (25)	Linn	357	20.8 (74)	20.7 (45)	Madison	36	28.4 (51)	22.7 (32)	Mills	20	15.3 (95)	15.2 (80)	Polk	500	14.8 (96)	16.0 (77)	Pottawattamie	204	26.0 (59)	24.3 (25)	Scott	232	16.3 (90)	16.9 (70)	Story	61	8.6 (99)	9.6 (99)	Warren	69	18.8 (84)	19.3 (54)	Washington	56	29.9 (45)	19.7 (50)	Woodbury	231	24.8 (64)	23.3 (28)
	Davis	33	42.9 (13)	30.3 (06)	Clayton	53	31.6 (35)	22.7 (32)	State Total	6,123	23.3	19.3	Linn	357	20.8 (74)	20.7 (45)	Madison	36	28.4 (51)	22.7 (32)	Mills	20	15.3 (95)	15.2 (80)	Polk	500	14.8 (96)	16.0 (77)	Pottawattamie	204	26.0 (59)	24.3 (25)	Scott	232	16.3 (90)	16.9 (70)	Story	61	8.6 (99)	9.6 (99)	Warren	69	18.8 (84)	19.3 (54)	Washington	56	29.9 (45)	19.7 (50)	Woodbury	231	24.8 (64)	23.3 (28)																																								
	Decatur	16	20.7 (76)	14.1 (90)	Crawford	55	36.2 (24)	24.5 (24)	State Total	6,123	23.3	19.3	Linn	357	20.8 (74)	20.7 (45)	Madison	36	28.4 (51)	22.7 (32)	Mills	20	15.3 (95)	15.2 (80)	Polk	500	14.8 (96)	16.0 (77)	Pottawattamie	204	26.0 (59)	24.3 (25)	Scott	232	16.3 (90)	16.9 (70)	Story	61	8.6 (99)	9.6 (99)	Warren	69	18.8 (84)	19.3 (54)	Washington	56	29.9 (45)	19.7 (50)	Woodbury	231	24.8 (64)	23.3 (28)																																								
	Fremont	25	35.0 (26)	22.4 (35)	Delaware	38	23.0 (70)	18.6 (58)	State Total	6,123	23.3	19.3	Linn	357	20.8 (74)	20.7 (45)	Madison	36	28.4 (51)	22.7 (32)	Mills	20	15.3 (95)	15.2 (80)	Polk	500	14.8 (96)	16.0 (77)	Pottawattamie	204	26.0 (59)	24.3 (25)	Scott	232	16.3 (90)	16.9 (70)	Story	61	8.6 (99)	9.6 (99)	Warren	69	18.8 (84)	19.3 (54)	Washington	56	29.9 (45)	19.7 (50)	Woodbury	231	24.8 (64)	23.3 (28)																																								
	Howard	26	29.2 (49)	17.4 (66)	Dickinson	49	33.4 (29)	20.8 (44)	State Total	6,123	23.3	19.3	Linn	357	20.8 (74)	20.7 (45)	Madison	36	28.4 (51)	22.7 (32)	Mills	20	15.3 (95)	15.2 (80)	Polk	500	14.8 (96)	16.0 (77)	Pottawattamie	204	26.0 (59)	24.3 (25)	Scott	232	16.3 (90)	16.9 (70)	Story	61	8.6 (99)	9.6 (99)	Warren	69	18.8 (84)	19.3 (54)	Washington	56	29.9 (45)	19.7 (50)	Woodbury	231	24.8 (64)	23.3 (28)																																								
	Ida	32	45.7 (09)	25.1 (19)	Emmet	59	59.5 (02)	35.0 (01)	State Total	6,123	23.3	19.3	Linn	357	20.8 (74)	20.7 (45)	Madison	36	28.4 (51)	22.7 (32)	Mills	20	15.3 (95)	15.2 (80)	Polk	500	14.8 (96)	16.0 (77)	Pottawattamie	204	26.0 (59)	24.3 (25)	Scott	232	16.3 (90)	16.9 (70)	Story	61	8.6 (99)	9.6 (99)	Warren	69	18.8 (84)	19.3 (54)	Washington	56	29.9 (45)	19.7 (50)	Woodbury	231	24.8 (64)	23.3 (28)																																								
	Lucas	25	29.4 (48)	18.2 (59)	Floyd	27	17.8 (89)	12.6 (93)	State Total	6,123	23.3	19.3	Linn	357	20.8 (74)	20.7 (45)	Madison	36	28.4 (51)	22.7 (32)	Mills	20	15.3 (95)	15.2 (80)	Polk	500	14.8 (96)	16.0 (77)	Pottawattamie	204	26.0 (59)	24.3 (25)	Scott	232	16.3 (90)	16.9 (70)	Story	61	8.6 (99)	9.6 (99)	Warren	69	18.8 (84)	19.3 (54)	Washington	56	29.9 (45)	19.7 (50)	Woodbury	231	24.8 (64)	23.3 (28)																																								
					Franklin	19	19.6 (82)	12.9 (91)	State Total	6,123	23.3	19.3	Linn	357	20.8 (74)	20.7 (45)	Madison	36	28.4 (51)	22.7 (32)	Mills	20	15.3 (95)	15.2 (80)	Polk	500	14.8 (96)	16.0 (77)	Pottawattamie	204	26.0 (59)	24.3 (25)	Scott	232	16.3 (90)	16.9 (70)	Story	61	8.6 (99)	9.6 (99)	Warren	69	18.8 (84)	19.3 (54)	Washington	56	29.9 (45)	19.7 (50)	Woodbury	231	24.8 (64)	23.3 (28)																																								
					Greene	13	14.1 (97)	10.0 (98)	State Total	6,123	23.3	19.3	Linn	357	20.8 (74)	20.7 (45)	Madison	36	28.4 (51)	22.7 (32)	Mills	20	15.3 (95)	15.2 (80)	Polk	500	14.8 (96)	16.0 (77)	Pottawattamie	204	26.0 (59)	24.3 (25)	Scott	232	16.3 (90)	16.9 (70)	Story	61	8.6 (99)	9.6 (99)	Warren	69	18.8 (84)	19.3 (54)	Washington	56	29.9 (45)	19.7 (50)	Woodbury	231	24.8 (64)	23.3 (28)																																								
					Hamilton	68	46.2 (08)	30.1 (07)	State Total	6,123	23.3	19.3	Linn	357	20.8 (74)	20.7 (45)	Madison	36	28.4 (51)	22.7 (32)	Mills	20	15.3 (95)	15.2 (80)	Polk	500	14.8 (96)	16.0 (77)	Pottawattamie	204	26.0 (59)	24.3 (25)	Scott	232	16.3 (90)	16.9 (70)	Story	61	8.6 (99)	9.6 (99)	Warren	69	18.8 (84)	19.3 (54)	Washington	56	29.9 (45)	19.7 (50)	Woodbury	231	24.8 (64)	23.3 (28)																																								
					Hancock	34	31.5 (37)	20.4 (46)	State Total	6,123	23.3	19.3	Linn	357	20.8 (74)	20.7 (45)	Madison	36	28.4 (51)	22.7 (32)	Mills	20	15.3 (95)	15.2 (80)	Polk	500	14.8 (96)	16.0 (77)	Pottawattamie	204	26.0 (59)	24.3 (25)	Scott	232	16.3 (90)	16.9 (70)	Story	61	8.6 (99)	9.6 (99)	Warren	69	18.8 (84)	19.3 (54)	Washington	56	29.9 (45)	19.7 (50)	Woodbury	231	24.8 (64)	23.3 (28)																																								
								State Total	6,123	23.3	19.3	Linn	357	20.8 (74)	20.7 (45)	Madison	36	28.4 (51)	22.7 (32)	Mills	20	15.3 (95)	15.2 (80)	Polk	500	14.8 (96)	16.0 (77)	Pottawattamie	204	26.0 (59)	24.3 (25)	Scott	232	16.3 (90)	16.9 (70)	Story	61	8.6 (99)	9.6 (99)	Warren	69	18.8 (84)	19.3 (54)	Washington	56	29.9 (45)	19.7 (50)	Woodbury	231	24.8 (64)	23.3 (28)																																									
								State Total	6,123	23.3	19.3	Linn	357	20.8 (74)	20.7 (45)	Madison	36	28.4 (51)	22.7 (32)	Mills	20	15.3 (95)	15.2 (80)	Polk	500	14.8 (96)	16.0 (77)	Pottawattamie	204	26.0 (59)	24.3 (25)	Scott	232	16.3 (90)	16.9 (70)	Story	61	8.6 (99)	9.6 (99)	Warren	69	18.8 (84)	19.3 (54)	Washington	56	29.9 (45)	19.7 (50)	Woodbury	231	24.8 (64)	23.3 (28)																																									
								State Total	6,123	23.3	19.3	Linn	357	20.8 (74)	20.7 (45)	Madison	36	28.4 (51)	22.7 (32)	Mills	20	15.3 (95)	15.2 (80)	Polk	500	14.8 (96)	16.0 (77)	Pottawattamie	204	26.0 (59)	24.3 (25)	Scott	232	16.3 (90)	16.9 (70)	Story	61	8.6 (99)	9.6 (99)	Warren	69	18.8 (84)	19.3 (54)	Washington	56	29.9 (45)	19.7 (50)	Woodbury	231	24.8 (64)	23.3 (28)																																									
								State Total	6,123	23.3	19.3	Linn	357	20.8 (74)	20.7 (45)	Madison	36	28.4 (51)	22.7 (32)	Mills	20	15.3 (95)	15.2 (80)	Polk	500	14.8 (96)	16.0 (77)	Pottawattamie	204	26.0 (59)	24.3 (25)	Scott	232	16.3 (90)	16.9 (70)	Story	61	8.6 (99)	9.6 (99)	Warren	69	18.8 (84)	19.3 (54)	Washington	56	29.9 (45)	19.7 (50)	Woodbury	231	24.8 (64)	23.3 (28)																																									
								State Total	6,123	23.3	19.3	Linn	357	20.8 (74)	20.7 (45)	Madison	36	28.4 (51)	22.7 (32)	Mills	20	15.3 (95)	15.2 (80)	Polk	500	14.8 (96)	16.0 (77)	Pottawattamie	204	26.0 (59)	24.3 (25)	Scott	232	16.3 (90)	16.9 (70)	Story	61	8.6 (99)	9.6 (99)	Warren	69	18.8 (84)	19.3 (54)	Washington	56	29.9 (45)	19.7 (50)	Woodbury	231	24.8 (64)	23.3 (28)																																									
								State Total	6,123	23.3	19.3	Linn	357	20.8 (74)	20.7 (45)	Madison	36	28.4 (51)	22.7 (32)	Mills	20	15.3 (95)	15.2 (80)	Polk	500	14.8 (96)	16.0 (77)	Pottawattamie	204	26.0 (59)	24.3 (25)	Scott	232	16.3 (90)	16.9 (70)	Story	61	8.6 (99)	9.6 (99)	Warren	69	18.8 (84)	19.3 (54)	Washington	56	29.9 (45)	19.7 (50)	Woodbury	231	24.8 (64)	23.3 (28)																																									
								State Total	6,123	23.3	19.3	Linn	357	20.8 (74)	20.7 (45)	Madison	36	28.4 (51)	22.7 (32)	Mills	20	15.3 (95)	15.2 (80)	Polk	500	14.8 (96)	16.0 (77)	Pottawattamie	204	26.0 (59)	24.3 (25)	Scott	232	16.3 (90)	16.9 (70)	Story	61	8.6 (99)	9.6 (99)	Warren	69	18.8 (84)	19.3 (54)	Washington	56	29.9 (45)	19.7 (50)	Woodbury	231	24.8 (64)	23.3 (28)																																									
								State Total	6,123	23.3	19.3	Linn	357	20.8 (74)	20.7 (45)	Madison	36	28.4 (51)	22.7 (32)	Mills	20	15.3 (95)	15.2 (80)	Polk	500	14.8 (96)	16.0 (77)	Pottawattamie	204	26.0 (59)	24.3 (25)	Scott	232	16.3 (90)	16.9 (70)	Story	61	8.6 (99)	9.6 (99)	Warren	69	18.8 (84)	19.3 (54)	Washington	56	29.9 (45)	19.7 (50)	Woodbury	231	24.8 (64)	23.3 (28)																																									
								State Total	6,123	23.3	19.3	Linn	357	20.8 (74)	20.7 (45)	Madison	36	28.4 (51)</																																																																										

Diabetes Mellitus Mortality by County Group 1978-2004



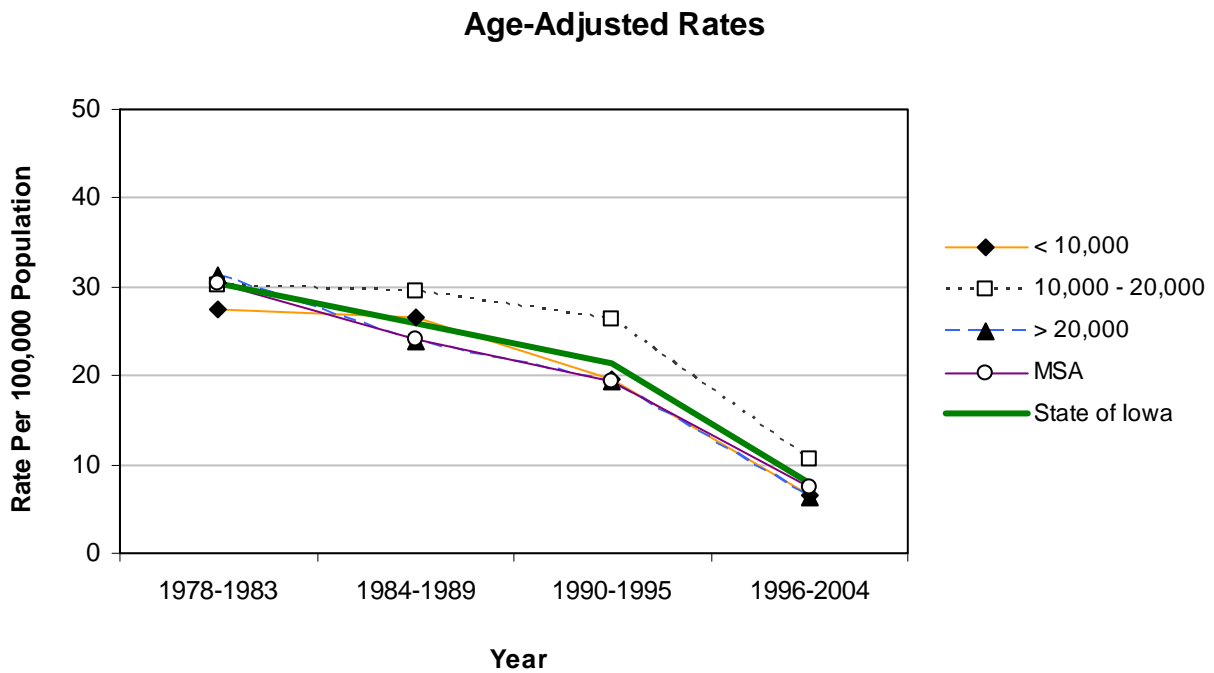
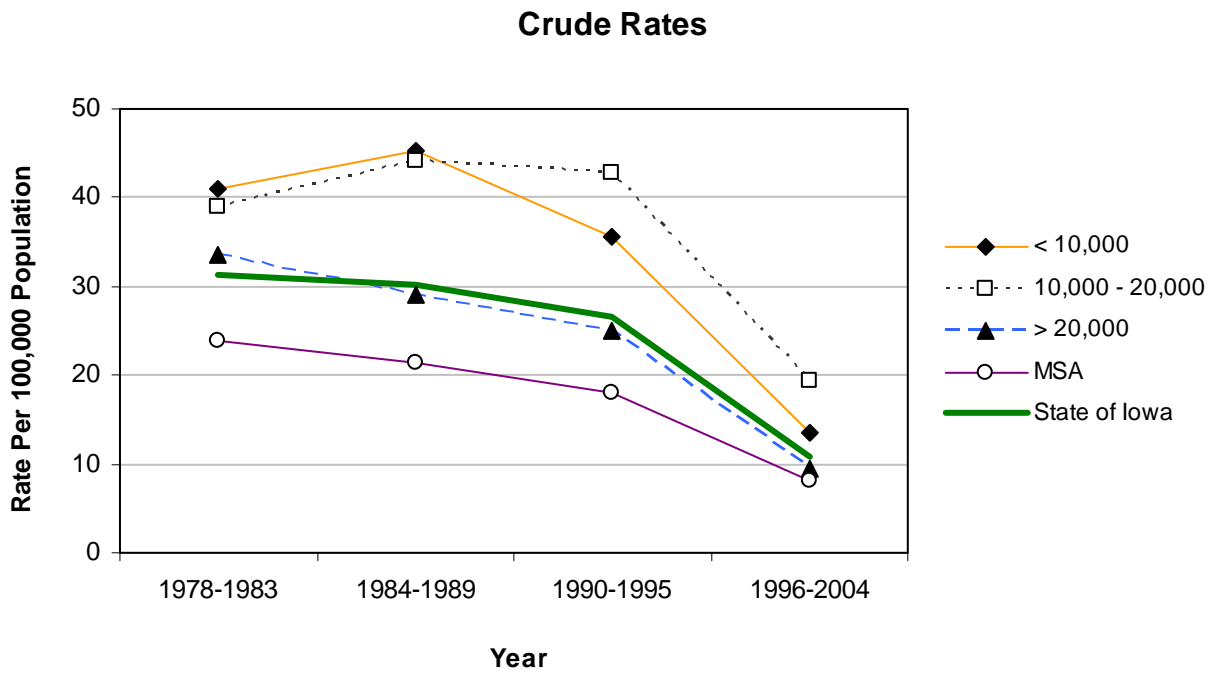
Atherosclerosis Mortality 1996-2004

	County	#	Crude ¹	Adjusted ^{1,2}	County	#	Crude ¹	Adjusted ^{1,2}	
Counties with Average Population < 10,000	Adair	43	58.5	22.9	Monona	11	12.3	4.7	
	Adams	*	*	*	Monroe	22	30.6	17.0	
	Audubon	15	24.7	10.4	Osceola	*	*	*	
	Clarke	*	*	*	Palo Alto	5	5.5	2.5	
	Davis	5	6.5	3.6	Pocahontas	19	24.6	12.5	
	Decatur	8	10.4	6.1	Ringgold	*	*	*	
	Fremont	5	7.0	4.5	Taylor	*	*	*	
	Howard	*	*	*	Van Buren	16	22.9	11.4	
	Ida	5	7.1	3.4	Wayne	17	28.0	11.4	
	Lucas	6	7.1	3.8	Worth	*	*	*	
					Total	194	13.6	6.6	
	Counties with Average Population 10,000 – 20,000	Allamakee	39	29.8	17.9	Hardin	16	9.5	5.3
		Appanoose	12	9.8	4.9	Humboldt	7	7.5	4.1
Butler		45	32.8	17.3	Iowa	10	7.1	3.8	
Calhoun		21	21.1	9.1	Jefferson	10	6.8	5.2	
Cass		23	17.5	8.2	Keokuk	7	6.8	4.0	
Cedar		11	6.7	4.4	Kossuth	136	88.8	47.5	
Cherokee		54	46.3	25.3	Louisa	5	4.6	3.8	
Chickasaw		12	10.2	6.1	Lyon	*	*	*	
Clay		15	9.6	5.7	Mitchell	8	8.2	3.9	
Clayton		12	7.1	4.3	Montgomery	16	15.3	7.2	
Crawford		7	4.6	2.8	O'Brien	8	5.9	3.0	
Delaware		12	7.3	5.4	Page	6	3.9	2.1	
Dickinson		7	4.8	2.8	Poweshiek	9	5.3	3.0	
Emmet		*	*	*	Sac	85	82.5	36.2	
Floyd		152	100.5	52.2	Shelby	9	7.6	3.8	
Franklin		123	126.8	69.3	Tama	9	5.6	2.9	
Greene		18	19.5	9.1	Union	10	9.1	5.1	
Hamilton		6	4.1	2.4	Winnebago	10	9.6	5.0	
Hancock		*	*	*	Wright	9	7.0	3.2	
				Total	946	19.3	10.6		
Counties with Average Population > 20,000	Boone	31	13.2	8.3	Lee	28	8.2	5.5	
	Buchanan	10	5.3	4.0	Mahaska	77	38.5	25.9	
	Buena Vista	19	10.4	6.4	Marion	26	9.0	5.7	
	Carroll	23	12.0	6.6	Marshall	27	7.6	5.3	
	Cerro Gordo	27	6.5	4.2	Muscatine	17	4.5	4.0	
	Clinton	40	8.9	6.5	Plymouth	28	12.6	8.6	
	Des Moines	17	4.5	2.9	Sioux	9	3.2	2.2	
	Fayette	10	5.1	2.8	Wapello	16	4.9	3.2	
	Henry	14	7.7	5.2	Webster	14	3.9	2.5	
	Jackson	46	25.3	16.5	Winneshiek	16	8.4	5.8	
	Jasper	56	16.8	12.2	Total	551	9.4	6.3	
MSA Counties	Benton	*	*	*	Linn	130	7.6	7.1	
	Black Hawk	48	4.2	3.4	Madison	*	*	*	
	Bremer	24	11.4	7.2	Mills	6	4.6	4.2	
	Dallas	19	5.1	5.2	Polk	153	4.5	4.8	
	Dubuque	120	14.9	11.7	Pottawattamie	30	3.8	3.6	
	Grundy	5	4.5	2.2	Scott	168	11.8	12.2	
	Guthrie	233	227.8	123.1	Story	24	3.4	3.8	
	Harrison	*	*	*	Warren	21	5.7	5.5	
	Johnson	43	4.3	6.7	Washington	35	18.7	9.7	
	Jones	6	3.3	2.5	Woodbury	46	4.9	4.3	
					Total	1,122	8.0	7.5	
State Total	2,813	10.7	7.9						

¹Rates per 100,000 population²Adjusted to year 2000 population

Source: State Health Registry of Iowa via NCI's SEER*Stat Program

Atherosclerosis Mortality by County Group 1978-2004



Infectious/Parasitic Mortality 1996-2004

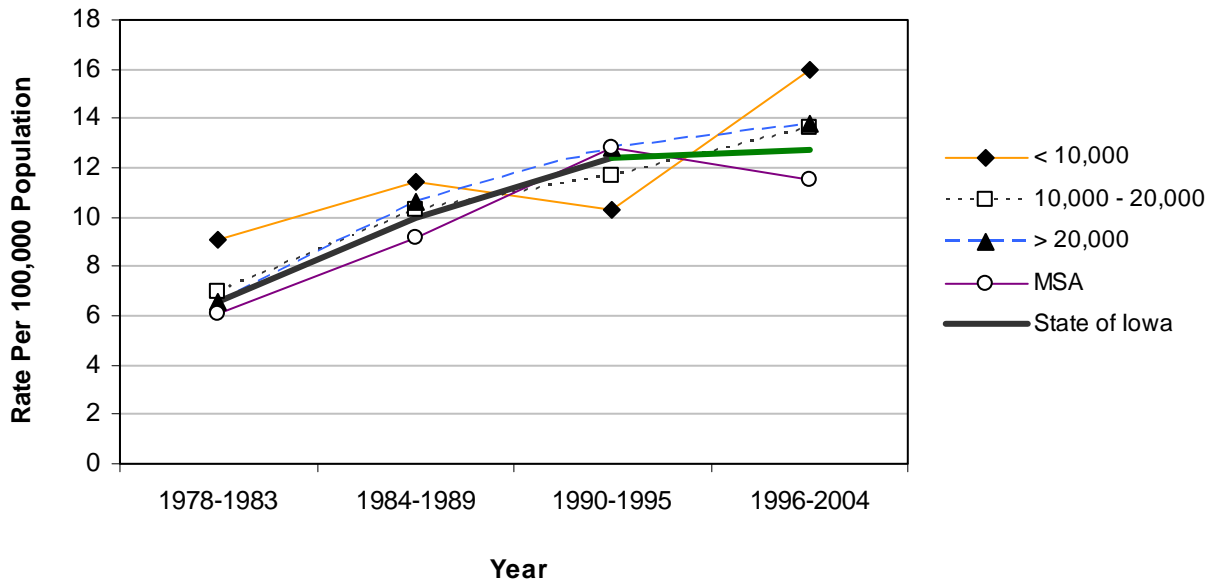
	County	#	Crude ¹	Adjusted ^{1,2}	County	#	Crude ¹	Adjusted ^{1,2}	
Counties with Average Population < 10,000	Adair	11	15.0	8.4	Monona	18	20.1	11.9	
	Adams	*	*	*	Monroe	12	16.7	11.6	
	Audubon	10	16.5	8.8	Osceola	6	9.6	6.2	
	Clarke	13	16.0	9.7	Palo Alto	15	16.6	9.4	
	Davis	6	7.8	7.2	Pocahontas	15	19.4	11.0	
	Decatur	8	10.4	7.9	Ringgold	7	14.4	7.3	
	Fremont	12	16.8	11.3	Taylor	22	35.4	20.2	
	Howard	8	9.0	6.6	Van Buren	21	30.1	20.2	
	Ida	6	8.6	5.0	Wayne	9	14.8	9.0	
	Lucas	16	18.8	13.5	Worth	11	15.5	10.2	
					Total	226-230	15.8-16.0	10.0-10.2	
	Counties with Average Population 10,000 – 20,000	Allamakee	12	9.2	6.0	Hardin	26	15.5	8.7
		Appanoose	16	13.0	9.8	Humboldt	5	5.4	3.0
Butler		14	10.2	6.0	Iowa	25	17.7	12.0	
Calhoun		18	18.1	10.4	Jefferson	18	12.3	10.0	
Cass		24	18.2	12.7	Keokuk	24	23.4	15.2	
Cedar		15	9.2	7.2	Kossuth	27	17.6	11.4	
Cherokee		16	13.7	9.2	Louisa	11	10.1	8.5	
Chickasaw		7	6.0	5.6	Lyon	7	6.6	4.9	
Clay		19	12.2	9.3	Mitchell	7	7.1	4.4	
Clayton		27	16.1	11.8	Montgomery	17	16.2	10.8	
Crawford		22	14.5	10.9	O'Brien	15	11.1	6.1	
Delaware		18	10.9	8.9	Page	38	25.0	17.7	
Dickinson		14	9.5	6.5	Poweshiek	14	8.2	6.5	
Emmet		15	15.1	10.3	Sac	14	13.6	8.3	
Floyd		19	12.6	8.8	Shelby	23	19.5	12.7	
Franklin		5	5.2	3.9	Tama	28	17.3	12.6	
Greene		21	22.7	13.5	Union	15	13.6	10.2	
Hamilton		30	20.4	15.3	Winnebago	15	14.3	8.4	
Hancock	12	11.1	8.1	Wright	13	10.2	5.8		
				Total	666	13.6	9.4		
Counties with Average Population > 20,000	Boone	37	15.7	12.7	Lee	63	18.5	14.4	
	Buchanan	26	13.7	11.9	Mahaska	17	8.5	6.4	
	Buena Vista	18	9.8	8.6	Marion	35	12.1	9.2	
	Carroll	15	7.8	5.0	Marshall	51	14.4	11.9	
	Cerro Gordo	59	14.2	11.0	Muscatine	55	14.6	13.7	
	Clinton	62	13.7	11.2	Plymouth	34	15.3	12.0	
	Des Moines	88	23.3	18.4	Sioux	36	12.6	10.3	
	Fayette	24	12.2	8.5	Wapello	44	13.6	9.8	
	Henry	27	14.8	13.0	Webster	54	15.1	11.6	
	Jackson	26	14.3	11.1	Winneshiek	12	6.3	4.9	
	Jasper	27	8.1	6.9	Total	810	13.8	11.0	
MSA Counties	Benton	29	12.7	10.5	Linn	215	12.5	12.4	
	Black Hawk	154	13.5	12.5	Madison	20	15.8	12.5	
	Bremer	26	12.4	10.1	Mills	27	20.7	20.0	
	Dallas	41	11.0	11.3	Polk	414	12.3	13.0	
	Dubuque	68	8.4	7.2	Pottawattamie	84	10.7	10.2	
	Grundy	17	15.3	10.6	Scott	182	12.8	13.1	
	Guthrie	12	11.7	7.6	Story	53	7.4	8.5	
	Harrison	14	10.0	7.8	Warren	28	7.6	7.6	
	Johnson	63	6.3	8.8	Washington	30	16.0	12.1	
	Jones	20	10.9	8.8	Woodbury	123	13.2	12.7	
					Total	1,620	11.5	11.5	
State Total	3,322-6	12.6-12.7	10.8-10.9						

¹Rates per 100,000 population²Adjusted to year 2000 population

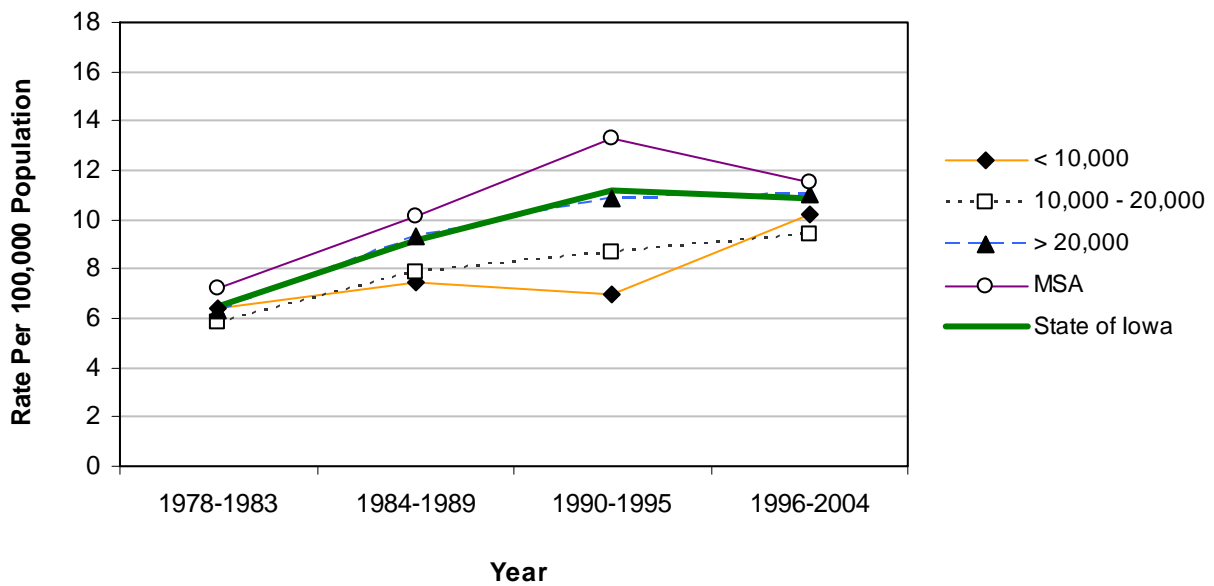
Source: State Health Registry of Iowa via NCI's SEER*Stat Program

Infectious/Parasitic Mortality by County Group 1978-2004

Crude Rates



Age-Adjusted Rates



Nephritis, Nephrotic Syndrome, Nephrosis Mortality 1996-2004

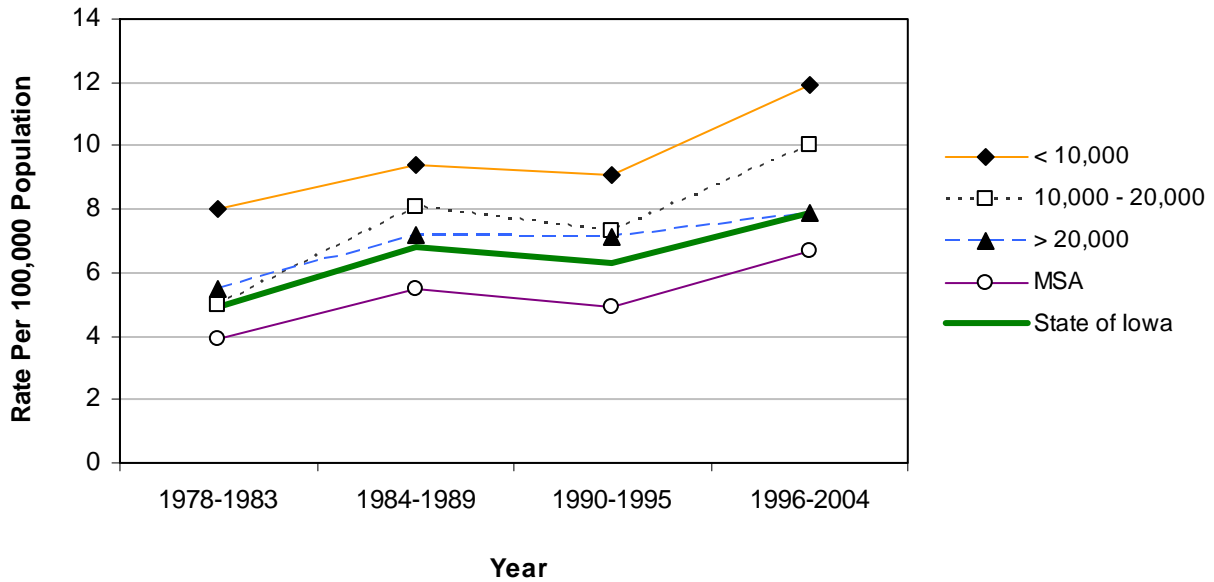
	County	#	Crude ¹	Adjusted ^{1,2}	County	#	Crude ¹	Adjusted ^{1,2}	
Counties with Average Population < 10,000	Adair	7	9.5	6.2	Monona	15	16.8	8.3	
	Adams	7	17.5	11.8	Monroe	6	8.4	5.8	
	Audubon	14	23.1	9.5	Osceola	*	*	*	
	Clarke	10	12.3	7.8	Palo Alto	8	8.8	4.6	
	Davis	12	15.6	9.6	Pocahontas	*	*	*	
	Decatur	8	10.4	6.2	Ringgold	10	20.5	8.9	
	Fremont	12	16.8	9.8	Taylor	8	12.9	7.7	
	Howard	15	16.8	9.3	Van Buren	9	12.9	7.3	
	Ida	9	12.9	6.6	Wayne	*	*	*	
	Lucas	7	8.2	5.1	Worth	*	*	*	
					Total	170	11.9	6.6	
	Counties with Average Population 10,000 – 20,000	Allamakee	12	9.2	5.5	Hardin	24	14.3	8.1
		Appanoose	11	8.9	6.0	Humboldt	12	12.9	7.3
Butler		25	18.2	10.4	Iowa	11	7.8	5.1	
Calhoun		6	6.0	2.5	Jefferson	5	3.4	2.8	
Cass		15	11.4	6.3	Keokuk	16	15.6	8.8	
Cedar		12	7.4	5.0	Kossuth	15	9.8	5.5	
Cherokee		8	6.9	4.8	Louisa	6	5.5	4.6	
Chickasaw		7	6.0	3.5	Lyon	14	13.2	8.1	
Clay		20	12.8	8.5	Mitchell	6	6.1	3.2	
Clayton		13	7.7	4.7	Montgomery	22	21.0	12.0	
Crawford		16	10.5	7.2	O'Brien	12	8.9	4.7	
Delaware		8	4.9	3.7	Page	27	17.8	10.9	
Dickinson		22	15.0	9.3	Poweshiek	11	6.5	4.2	
Emmet		13	13.1	7.7	Sac	13	12.6	6.5	
Floyd		13	8.6	4.6	Shelby	12	10.2	6.3	
Franklin		*	*	*	Tama	19	11.7	7.0	
Greene		15	16.2	9.1	Union	14	12.7	7.2	
Hamilton		17	11.6	7.8	Winnebago	7	6.7	4.0	
Hancock		*	*	*	Wright	7	5.5	2.8	
				Total	491	10.0	6.1		
Counties with Average Population > 20,000	Boone	23	9.8	7.1	Lee	38	11.2	7.6	
	Buchanan	21	11.1	8.7	Mahaska	12	6.0	3.9	
	Buena Vista	14	7.6	5.2	Marion	21	7.3	5.4	
	Carroll	15	7.8	5.2	Marshall	46	13.0	9.7	
	Cerro Gordo	15	3.6	2.5	Muscatine	27	7.2	6.9	
	Clinton	26	5.8	4.5	Plymouth	9	4.0	2.9	
	Des Moines	34	9.0	6.3	Sioux	22	7.7	5.8	
	Fayette	19	9.7	6.2	Wapello	30	9.3	7.1	
	Henry	9	4.9	3.7	Webster	31	8.7	6.1	
	Jackson	16	8.8	6.4	Winnesiek	15	7.	5.9	
	Jasper	22	6.6	5.1	Total	465	7.9	5.8	
	MSA Counties	Benton	10	4.4	3.4	Linn	80	4.7	4.5
Black Hawk		101	8.8	7.5	Madison	9	7.1	4.5	
Bremer		20	9.5	6.4	Mills	19	14.6	13.8	
Dallas		22	5.9	6.6	Polk	226	6.7	7.3	
Dubuque		54	6.7	5.1	Pottawattamie	70	8.9	8.4	
Grundy		18	16.2	9.8	Scott	89	6.2	6.5	
Guthrie		7	6.8	3.8	Story	36	5.0	5.4	
Harrison		15	10.7	7.1	Warren	21	5.7	5.8	
Johnson		38	3.8	5.9	Washington	10	5.3	3.8	
Jones		17	9.3	7.1	Woodbury	77	8.3	7.5	
					Total	939	6.7	6.5	
State Total	2,065	7.9	6.2						

¹Rates per 100,000 population²Adjusted to year 2000 population

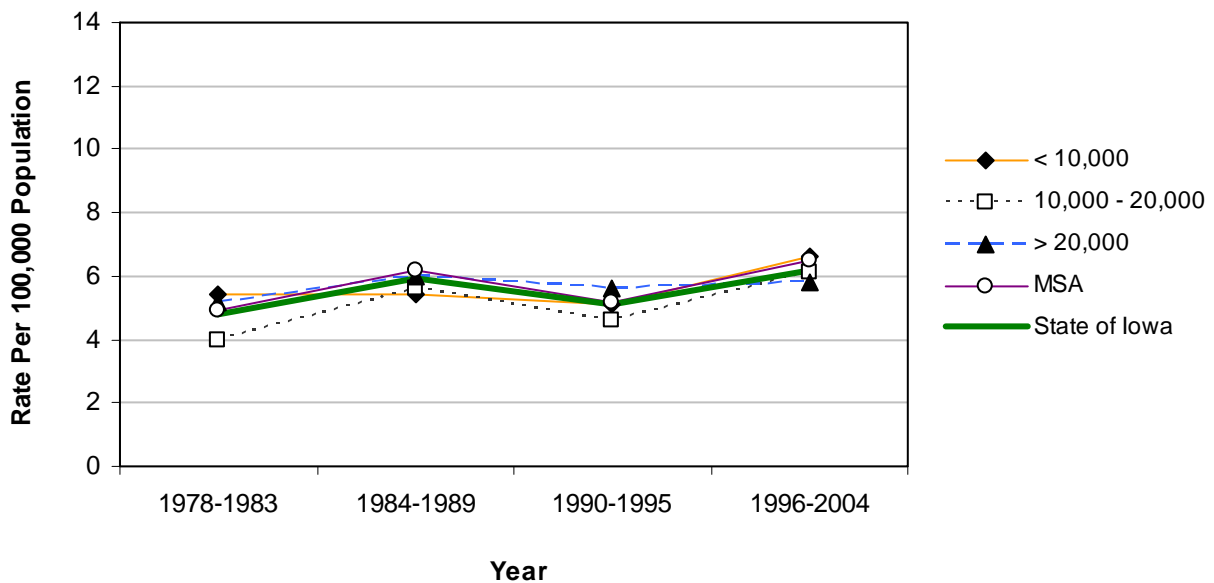
Source: State Health Registry of Iowa via NCI's SEER*Stat Program

Nephritis, Nephrotic Syndrome, Nephrosis Mortality by County Group 1978-2004

Crude Rates



Age-Adjusted Rates



Chronic Liver Disease and Cirrhosis Mortality 1996-2004

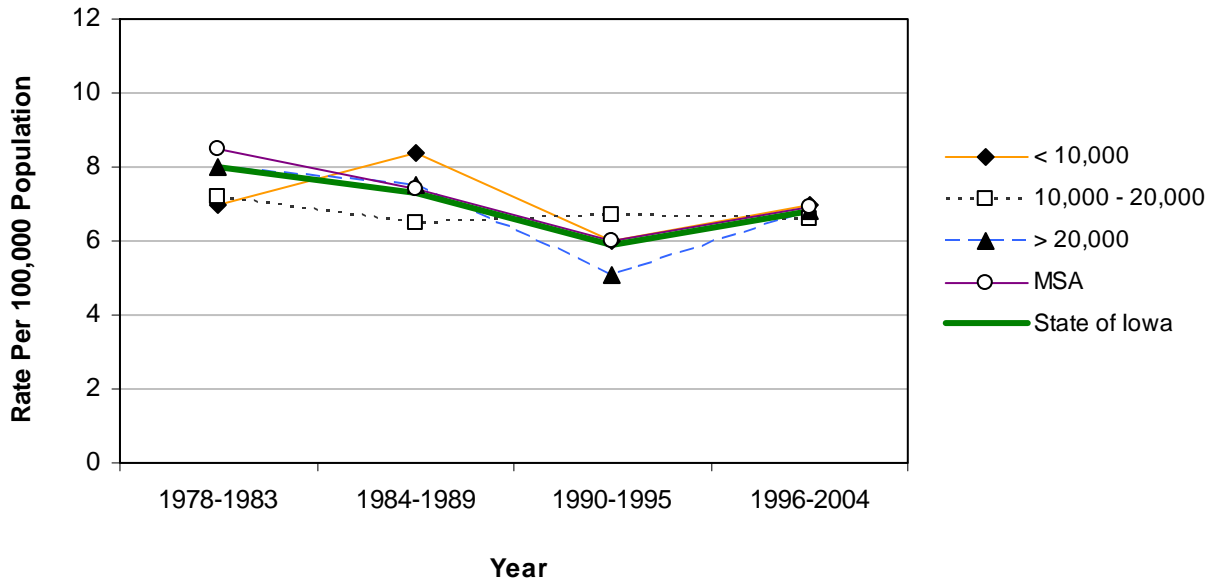
	County	#	Crude ¹	Adjusted ^{1,2}	County	#	Crude ¹	Adjusted ^{1,2}	
Counties with Average Population < 10,000	Adair	5	6.8	6.1	Monona	9	10.1	6.8	
	Adams	7	17.5	14.6	Monroe	8	11.1	7.7	
	Audubon	5	8.2	4.1	Osceola	*	*	*	
	Clarke	*	*	*	Palo Alto	8	8.8	7.1	
	Davis	*	*	*	Pocahontas	7	9.1	6.9	
	Decatur	*	*	*	Ringgold	5	10.3	6.3	
	Fremont	*	*	*	Taylor	5	8.0	4.9	
	Howard	5	5.6	4.3	Van Buren	*	*	*	
	Ida	7	10.0	7.7	Wayne	*	*	*	
	Lucas	5	5.9	5.0	Worth	9	12.7	10.6	
					Total	100	7.0	5.2	
	Counties with Average Population 10,000 – 20,000	Allamakee	14	10.7	8.1	Hardin	7	4.2	3.5
		Appanoose	7	5.7	5.1	Humboldt	*	*	*
Butler		9	6.6	4.4	Iowa	7	5.0	4.2	
Calhoun		7	7.0	4.2	Jefferson	7	4.8	4.2	
Cass		8	6.1	5.1	Keokuk	5	4.9	3.8	
Cedar		13	8.0	6.7	Kossuth	13	8.5	6.1	
Cherokee		*	*	*	Louisa	8	7.3	6.7	
Chickasaw		11	9.4	8.1	Lyon	6	5.7	4.4	
Clay		7	4.5	4.2	Mitchell	*	*	*	
Clayton		14	8.3	5.8	Montgomery	7	6.7	4.8	
Crawford		10	6.6	5.6	O'Brien	11	8.1	5.9	
Delaware		13	7.9	7.3	Page	7	4.6	4.0	
Dickinson		13	8.9	6.9	Poweshiek	10	5.9	5.5	
Emmet		10	10.1	6.9	Sac	7	6.8	4.4	
Floyd		*	*	*	Shelby	6	5.1	4.0	
Franklin		6	6.2	4.3	Tama	18	11.1	10.2	
Greene		6	6.5	4.6	Union	8	7.3	5.4	
Hamilton		9	6.1	4.8	Winnebago	8	7.6	6.2	
Hancock		7	6.5	5.4	Wright	8	6.2	4.4	
				Total	322	6.6	5.2		
Counties with Average Population > 20,000	Boone	23	9.8	8.2	Lee	32	9.4	8.0	
	Buchanan	12	6.3	6.2	Mahaska	10	5.0	4.5	
	Buena Vista	11	6.0	5.4	Marion	23	8.0	7.3	
	Carroll	8	4.2	2.8	Marshall	35	9.9	8.3	
	Cerro Gordo	42	10.1	8.6	Muscatine	21	5.6	5.5	
	Clinton	30	6.6	5.9	Plymouth	8	3.6	3.2	
	Des Moines	21	5.6	4.8	Sioux	8	2.8	2.7	
	Fayette	12	6.1	4.8	Wapello	23	7.1	5.6	
	Henry	6	3.3	2.9	Webster	33	9.2	8.1	
	Jackson	12	6.6	5.6	Winneshiek	8	4.2	3.5	
	Jasper	20	6.0	4.9	Total	398	6.8	5.9	
MSA Counties	Benton	17	7.4	6.7	Linn	96	5.6	5.7	
	Black Hawk	73	6.4	6.1	Madison	*	*	*	
	Bremer	18	8.6	6.5	Mills	9	6.9	6.7	
	Dallas	17	4.5	5.0	Polk	323	9.6	10.1	
	Dubuque	53	6.6	6.1	Pottawattamie	48	6.1	5.8	
	Grundy	7	6.3	4.0	Scott	89	6.2	6.3	
	Guthrie	12	11.7	8.3	Story	28	3.9	5.0	
	Harrison	11	7.8	6.2	Warren	19	5.2	5.3	
	Johnson	29	2.9	4.4	Washington	13	6.9	5.4	
	Jones	11	6.0	5.3	Woodbury	87	9.3	9.5	
					Total	960-4	6.7-6.9	6.8-7.0	
State Total	1,780-4	6.7-6.8	6.2-6.3						

¹Rates per 100,000 population²Adjusted to year 2000 population

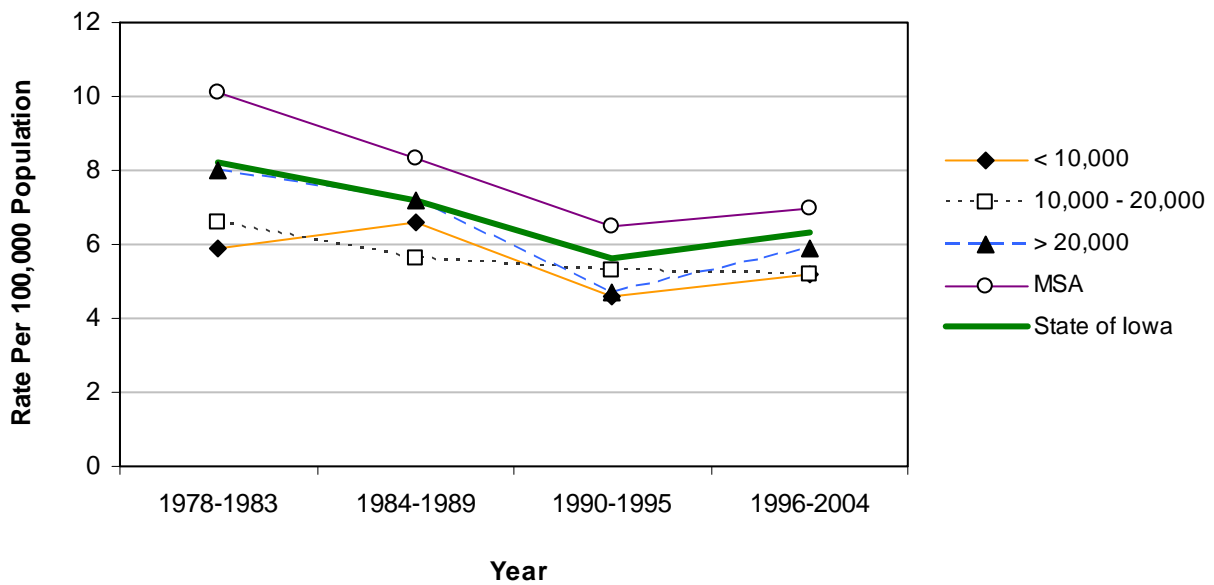
Source: State Health Registry of Iowa via NCI's SEER*Stat Program

Chronic Liver Disease and Cirrhosis Mortality by County Group 1978-2004

Crude Rates



Age-Adjusted Rates



Congenital Anomalies Mortality 1996-2004

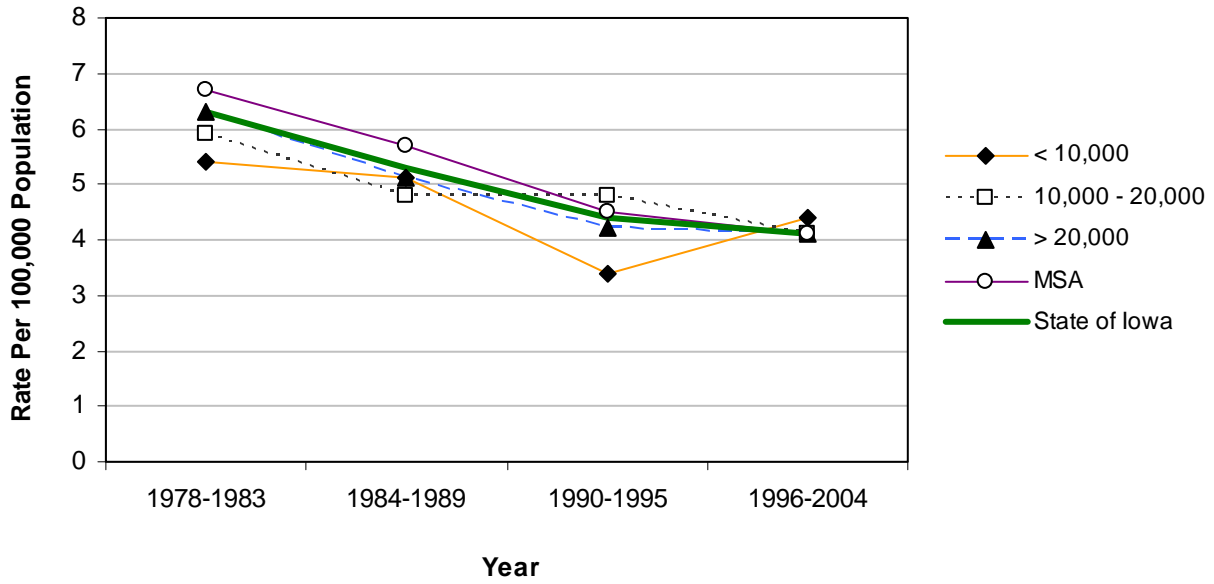
	County	#	Crude ¹	Adjusted ^{1,2}	County	#	Crude ¹	Adjusted ^{1,2}	
Counties with Average Population < 10,000	Adair	*	*	*	Monona	*	*	*	
	Adams	*	*	*	Monroe	*	*	*	
	Audubon	5	8.2	7.7	Osceola	5	8.0	7.7	
	Clarke	*	*	*	Palo Alto	6	6.6	5.9	
	Davis	*	*	*	Pocahontas	*	*	*	
	Decatur	6	7.8	10.1	Ringgold	*	*	*	
	Fremont	*	*	*	Taylor	*	*	*	
	Howard	*	*	*	Van Buren	*	*	*	
	Ida	6	8.6	10.7	Wayne	5	8.2	10.6	
	Lucas	5	5.9	6.4	Worth	*	*	*	
					Total	63	4.4	4.5	
	Counties with Average Population 10,000 – 20,000	Allamakee	8	6.1	6.8	Hardin	9	5.4	5.7
		Appanoose	*	*	*	Humboldt	*	*	*
Butler		6	4.4	5.4	Iowa	8	5.7	5.7	
Calhoun		*	*	*	Jefferson	6	4.1	3.7	
Cass		6	4.6	3.4	Keokuk	*	*	*	
Cedar		5	3.1	3.5	Kossuth	8	5.2	5.2	
Cherokee		7	6.0	5.2	Louisa	*	*	*	
Chickasaw		*	*	*	Lyon	6	5.7	5.3	
Clay		11	7.1	6.7	Mitchell	6	6.1	5.6	
Clayton		7	4.2	3.8	Montgomery	*	*	*	
Crawford		5	3.3	3.6	O'Brien	5	3.7	4.6	
Delaware		6	3.6	3.8	Page	6	3.9	4.6	
Dickinson		5	3.4	3.4	Poweshiek	*	*	*	
Emmet		7	7.1	8.5	Sac	*	*	*	
Floyd		8	5.3	6.1	Shelby	*	*	*	
Franklin		*	*	*	Tama	5	3.1	3.2	
Greene		*	*	*	Union	*	*	*	
Hamilton		5	3.4	3.6	Winnebago	*	*	*	
Hancock		*	*	*	Wright	11	8.6	8.3	
				Total	199	4.1	4.2		
Counties with Average Population > 20,000	Boone	10	4.3	4.4	Lee	11	3.2	3.3	
	Buchanan	13	6.9	6.4	Mahaska	*	*	*	
	Buena Vista	5	2.7	3.2	Marion	10	3.5	3.7	
	Carroll	11	5.7	5.6	Marshall	14	4.0	4.1	
	Cerro Gordo	30	7.2	7.5	Muscatine	14	3.7	3.7	
	Clinton	23	5.1	5.3	Plymouth	12	5.4	5.0	
	Des Moines	10	2.6	2.7	Sioux	9	3.2	3.4	
	Fayette	6	3.1	2.6	Wapello	13	4.0	3.9	
	Henry	11	6.0	7.0	Webster	11	3.1	3.2	
	Jackson	10	5.5	6.	Winneshiek	6	3.1	3.9	
	Jasper	8	2.4	2.3	Total	237-41	3.9-4.1	4.0-4.2	
	MSA Counties	Benton	6	2.6	2.6	Linn	76	4.4	4.4
Black Hawk		41	3.6	3.9	Madison	8	6.3	6.0	
Bremer		8	3.8	3.6	Mills	10	7.7	8.2	
Dallas		14	3.7	3.8	Polk	152	4.5	4.3	
Dubuque		28	3.5	3.5	Pottawattamie	40	5.1	5.0	
Grundy		*	*	*	Scott	44	3.1	3.1	
Guthrie		*	*	*	Story	25	3.5	4.5	
Harrison		8	5.7	6.0	Warren	12	3.3	3.7	
Johnson		32	3.2	3.8	Washington	9	4.8	4.1	
Jones		*	*	*	Woodbury	57	6.1	5.8	
					Total	576	4.1	4.1	
State Total		1,075-9	4.0-4.1	4.1-4.2					

¹Rates per 100,000 population²Adjusted to year 2000 population

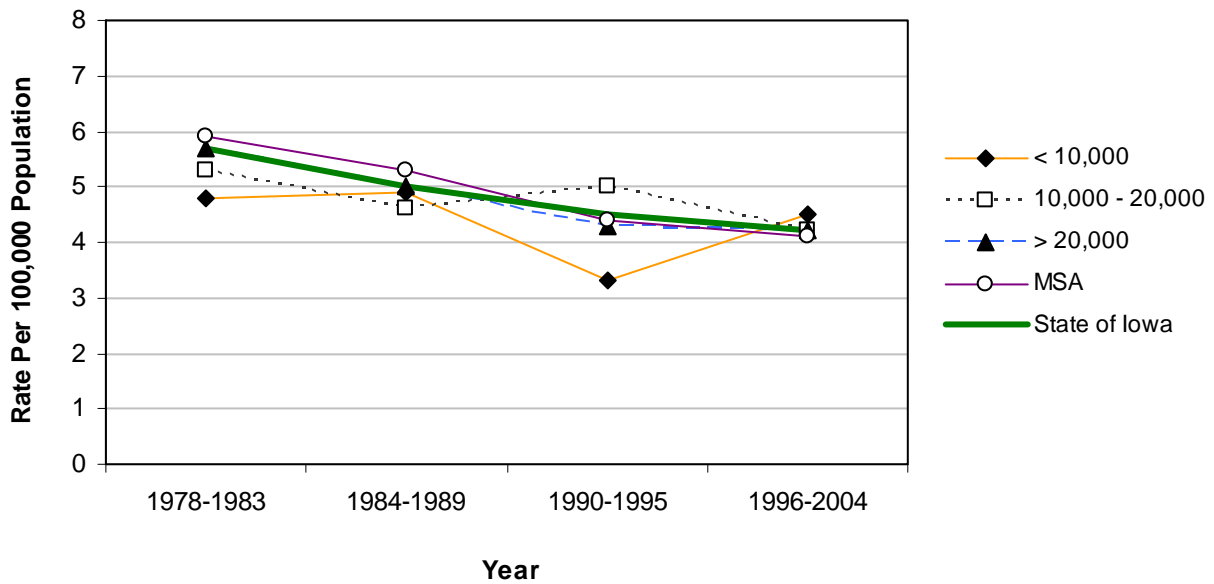
Source: State Health Registry of Iowa via NCI's SEER*Stat Program

Congenital Anomalies Mortality by County Group 1978-2004

Crude Rates



Age-Adjusted Rates



Conditions Originating in Perinatal Period Mortality 1996-2004

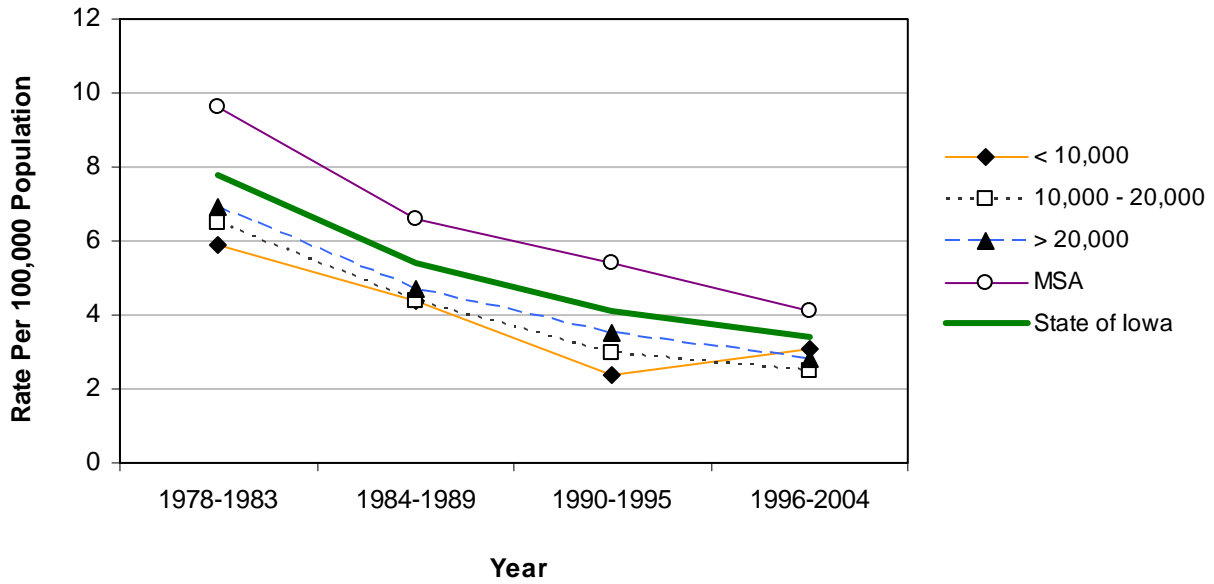
	County	#	Crude ¹	Adjusted ^{1,2}	County	#	Crude ¹	Adjusted ^{1,2}	
Counties with Average Population < 10,000	Adair	*	*	*	Monona	*	*	*	
	Adams	*	*	*	Monroe	*	*	*	
	Audubon	*	*	*	Osceola	*	*	*	
	Clarke	*	*	*	Palo Alto	*	*	*	
	Davis	*	*	*	Pocahontas	*	*	*	
	Decatur	*	*	*	Ringgold	*	*	*	
	Fremont	*	*	*	Taylor	*	*	*	
	Howard	*	*	*	Van Buren	*	*	*	
	Ida	*	*	*	Wayne	*	*	*	
	Lucas	*	*	*	Worth	6	8.5	10.6	
					Total	44	3.1	4.0	
	Counties with Average Population 10,000 – 20,000	Allamakee	5	3.8	4.9	Hardin	5	3.0	3.7
		Appanoose	*	*	*	Humboldt	*	*	*
Butler		*	*	*	Iowa	*	*	*	
Calhoun		*	*	*	Jefferson	*	*	*	
Cass		*	*	*	Keokuk	*	*	*	
Cedar		*	*	*	Kossuth	5	3.3	4.6	
Cherokee		*	*	*	Louisa	*	*	*	
Chickasaw		*	*	*	Lyon	5	4.7	4.8	
Clay		5	3.2	3.7	Mitchell	5	5.1	5.9	
Clayton		*	*	*	Montgomery	6	5.7	7.5	
Crawford		*	*	*	O'Brien	*	*	*	
Delaware		6	3.6	4.3	Page	8	5.3	7.0	
Dickinson		*	*	*	Poweshiek	*	*	*	
Emmet		*	*	*	Sac	*	*	*	
Floyd		*	*	*	Shelby	5	4.2	5.6	
Franklin		*	*	*	Tama	5	3.1	3.4	
Greene		5	5.4	7.1	Union	*	*	*	
Hamilton		5	3.4	3.9	Winnebago	*	*	*	
Hancock		*	*	*	Wright	*	*	*	
				Total	125	2.5	3.2		
Counties with Average Population > 20,000	Boone	7	3.0	3.5	Lee	17	5.0	6.0	
	Buchanan	5	2.6	2.6	Mahaska	12	6.0	6.5	
	Buena Vista	5	2.7	3.3	Marion	10	3.5	3.9	
	Carroll	7	3.6	4.3	Marshall	8	2.3	2.4	
	Cerro Gordo	8	1.9	2.4	Muscatine	*	*	*	
	Clinton	11	2.4	2.8	Plymouth	5	2.2	2.6	
	Des Moines	12	3.2	3.5	Sioux	8	2.8	2.9	
	Fayette	*	*	*	Wapello	8	2.5	2.8	
	Henry	*	*	*	Webster	7	2.0	2.2	
	Jackson	8	4.4	5.6	Winneshiek	*	*	*	
	Jasper	13	3.9	4.4	Total	163	2.8	3.2	
	MSA Counties	Benton	8	3.5	4.1	Linn	70	4.1	4.0
		Black Hawk	30	2.6	3.0	Madison	9	7.1	7.7
Bremer		*	*	*	Mills	*	*	*	
Dallas		12	3.2	3.2	Polk	166	4.9	4.4	
Dubuque		22	2.7	2.9	Pottawattamie	34	4.3	4.4	
Grundy		*	*	*	Scott	71	5.0	4.9	
Guthrie		*	*	*	Story	19	2.7	3.3	
Harrison		*	*	*	Warren	19	5.2	5.9	
Johnson		35	3.5	4.0	Washington	11	5.9	5.9	
Jones		8	4.4	5.7	Woodbury	41	4.4	4.1	
					Total	570	4.1	4.1	
State Total		902	3.4	3.8					

¹Rates per 100,000 population²Adjusted to year 2000 population

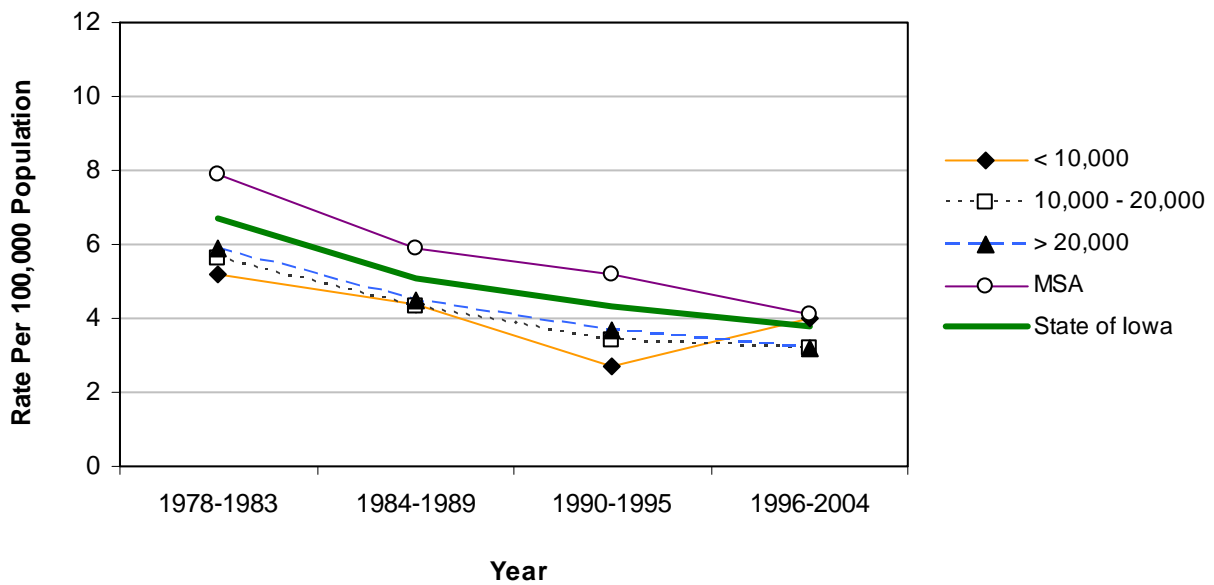
Source: State Health Registry of Iowa via NCI's SEER*Stat Program

Conditions Originating in Perinatal Period Mortality by County Group 1978-2004

Crude Rates



Age-Adjusted Rates



Alzheimer's Disease Mortality 1996-2004

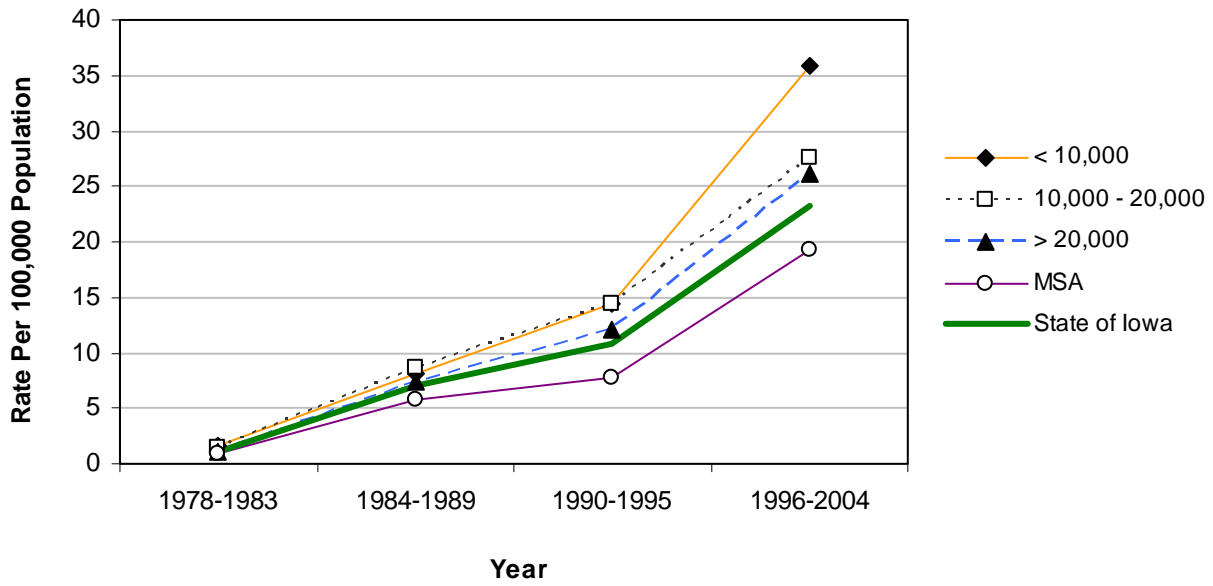
	County	#	Crude ¹	Adjusted ^{1,2}	County	#	Crude ¹	Adjusted ^{1,2}	
Counties with Average Population < 10,000	Adair	8	10.9	4.5	Monona	54	60.4	24.5	
	Adams	12	30.0	14.9	Monroe	20	27.8	15.2	
	Audubon	46	75.8	32.3	Osceola	7	11.1	6.3	
	Clarke	38	46.8	26.9	Palo Alto	37	40.9	18.9	
	Davis	*	*	*	Pocahontas	25	32.3	14.5	
	Decatur	19	24.6	15.1	Ringgold	35	71.9	30.7	
	Fremont	35	49.0	26.5	Taylor	25	40.2	17.2	
	Howard	29	32.5	15.8	Van Buren	18	25.8	14.0	
	Ida	23	32.9	16.3	Wayne	18	29.7	12.4	
	Lucas	22	25.9	13.5	Worth	39	55.1	26.9	
					Total	510-14	35.7-35.9	17.4-17.6	
	Counties with Average Population 10,000 – 20,000	Allamakee	56	42.7	24.4	Hardin	64	38.1	17.7
		Appanoose	13	10.6	5.5	Humboldt	27	29.1	14.3
Butler		35	25.5	13.5	Iowa	29	20.6	11.9	
Calhoun		59	59.4	25.8	Jefferson	46	31.5	23.0	
Cass		29	22.0	10.6	Keokuk	15	14.6	7.1	
Cedar		12	7.4	4.1	Kossuth	51	33.3	17.2	
Cherokee		21	18.0	10.1	Louisa	13	11.9	9.3	
Chickasaw		27	23.0	14.6	Lyon	19	17.9	10.0	
Clay		38	24.4	14.4	Mitchell	7	7.1	3.4	
Clayton		57	34.0	19.4	Montgomery	30	28.6	12.6	
Crawford		47	30.9	18.4	O'Brien	35	25.8	12.1	
Delaware		36	21.8	16.1	Page	39	25.6	13.3	
Dickinson		26	17.7	9.9	Poweshiek	54	31.7	17.4	
Emmet		34	34.3	17.2	Sac	27	26.2	11.7	
Floyd		46	30.4	16.8	Shelby	39	33.1	17.2	
Franklin		31	32.0	17.1	Tama	77	47.6	25.9	
Greene		23	24.9	10.8	Union	32	29.1	16.5	
Hamilton		34	23.1	14.2	Winnebago	30	28.7	14.7	
Hancock		29	26.9	15.2	Wright	60	46.9	22.1	
				Total	1,347	27.5	14.8		
Counties with Average Population > 20,000	Boone	103	43.8	27.6	Lee	108	31.7	21.0	
	Buchanan	34	18.0	13.9	Mahaska	39	19.5	12.8	
	Buena Vista	37	20.2	12.3	Marion	64	22.2	14.5	
	Carroll	62	32.2	17.7	Marshall	243	68.8	48.8	
	Cerro Gordo	143	34.4	21.7	Muscatine	67	17.8	16.0	
	Clinton	80	17.7	12.7	Plymouth	71	31.8	21.7	
	Des Moines	70	18.5	12.3	Sioux	46	16.1	11.7	
	Fayette	79	40.2	21.9	Wapello	74	22.9	14.5	
	Henry	20	11.0	7.6	Webster	74	20.7	12.7	
	Jackson	24	13.2	8.3	Winneshiek	26	13.6	8.8	
	Jasper	76	22.8	16.6	Total	1,540	26.2	17.6	
MSA Counties	Benton	40	17.5	12.1	Linn	280	16.3	15.5	
	Black Hawk	222	19.4	15.5	Madison	57	44.9	30.7	
	Bremer	70	33.3	20.5	Mills	25	19.2	17.8	
	Dallas	66	17.6	17.7	Polk	589	17.4	18.5	
	Dubuque	157	19.5	14.8	Pottawattamie	188	23.9	22.7	
	Grundy	44	39.6	20.4	Scott	275	19.3	20.0	
	Guthrie	24	23.5	13.1	Story	108	15.1	15.6	
	Harrison	33	23.5	14.2	Warren	128	34.9	33.8	
	Johnson	101	10.1	15.7	Washington	38	20.3	11.3	
	Jones	27	14.7	10.5	Woodbury	234	25.1	21.5	
					Total	2,706	19.2	17.9	
State Total	6,103-7	23.2-23.3	17.0-17.1						

¹Rates per 100,000 population²Adjusted to year 2000 population

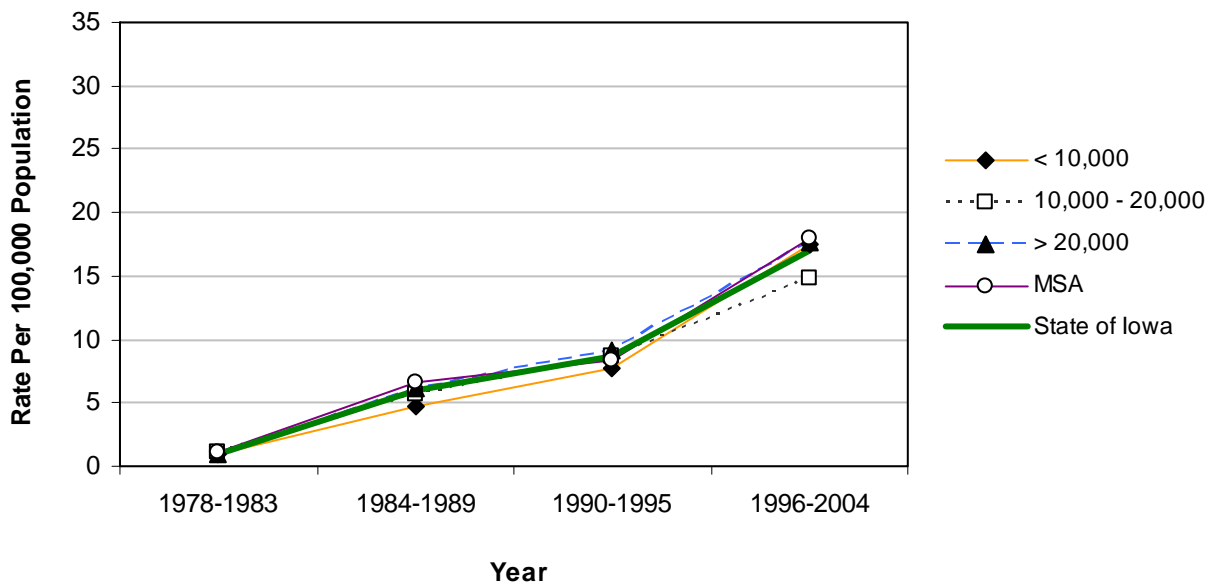
Source: State Health Registry of Iowa via NCI's SEER*Stat Program

Alzheimer's Disease Mortality by County Group 1978-2004

Crude Rates



Age-Adjusted Rates



[This page has been intentionally left blank.]