

Youth Injury Mortality

Injuries remain the leading cause of death in persons age 1-34 years and contribute the most to years of life lost (YLL), particularly for those events of pre-adult ages. Deaths from unintentional injuries, homicides, and suicides are important public health problems in those 15-24 years of age and many of these deaths are preventable.

Transportation fatalities accounted for 118 deaths for youth aged 0-14 from 2002-2006. Of these, 79% were due to motor vehicle traffic death. In the 15-19 age range, 238 transportation deaths occurred over this same period with 97% accounted for by motor vehicle traffic deaths. In general, transportation mortality rates are higher in the more rural counties for both age groups. For 15-19 year-olds during 2002 through 2006, the mortality rate in the most rural of counties was almost double that of the state. Tables other than transportation are not presented due to the small number of events in both age ranges.

HIGHLIGHTS...

- ✓ Unintentional injuries, homicides, and suicides are important public health problems in those 15-24 years of age.
- ✓ Injuries contribute the most to years of life lost (YLL).
- ✓ Motor vehicle deaths accounted for 97% of all transportation deaths in youth aged 15-19 in Iowa.

The cause of death data are obtained from death certificates filed at the Iowa Department of Public Health. Analysis was done by the State Health Registry of Iowa at the University of Iowa. Crude and age-adjusted rates for ages 15-19 are identical to one another because only one age group in the age-adjustment analysis is represented. The crude and age-adjusted rates for the 0-14 age group show only slight differences as this represents four age groups (< 1, 1-4, 5-9, and 10-14) in the age-adjustment analysis. We therefore display only crude rates in the tables and graphs.

Age 0-14: All Transportation Mortality 2002-2006

	County	#	Crude ¹	County	#	Crude ¹
Counties with Average Population < 10,000	Adair	*	*	Lucas	*	*
	Adams	*	*	Monona	*	*
	Audubon	*	*	Monroe	*	*
	Clarke	*	*	Osceola	*	*
	Davis	*	*	Palo Alto	*	*
	Decatur	*	*	Pocahontas	*	*
	Fremont	*	*	Ringgold	*	*
	Greene	*	*	Taylor	*	*
	Howard	*	*	Van Buren	*	*
	Humboldt	*	*	Wayne	*	*
	Ida	*	*	Worth	*	*
				Total	10	6.2
	Counties with Average Population 10,000 – 20,000	Allamakee	*	*	Hardin	*
Appanoose		*	*	Iowa	*	*
Buena Vista		*	*	Jefferson	*	*
Butler		*	*	Keokuk	*	*
Calhoun		*	*	Kossuth	*	*
Cass		*	*	Louisa	*	*
Cedar		*	*	Lyon	*	*
Cherokee		*	*	Mitchell	*	*
Chickasaw		*	*	Montgomery	*	*
Clay		*	*	O'Brien	*	*
Clayton		*	*	Page	*	*
Crawford		*	*	Poweshiek	*	*
Delaware		*	*	Sac	*	*
Dickinson		*	*	Shelby	*	*
Emmet		*	*	Tama	*	*
Floyd		*	*	Union	*	*
Franklin		*	*	Winnebago	*	*
Hamilton		*	*	Wright	*	*
Hancock	*	*	Total	30	6.0	
Counties with Average Population > 20,000	Boone	*	*	Lee	*	*
	Buchanan	*	*	Mahaska	*	*
	Carroll	*	*	Marion	*	*
	Cerro Gordo	*	*	Marshall	*	*
	Clinton	*	*	Muscatine	*	*
	Des Moines	*	*	Plymouth	*	*
	Fayette	*	*	Sioux	*	*
	Henry	*	*	Wapello	*	*
	Jackson	*	*	Webster	*	*
	Jasper	*	*	Winneshiek	*	*
			Total	28	4.6	
MSA Counties	Benton	*	*	Linn	7	3.3
	Black Hawk	*	*	Madison	*	*
	Bremer	*	*	Mills	*	*
	Dallas	*	*	Polk	14	3.2
	Dubuque	*	*	Pottawattamie	*	*
	Grundy	*	*	Scott	*	*
	Guthrie	*	*	Story	*	*
	Harrison	*	*	Warren	*	*
	Johnson	*	*	Washington	*	*
	Jones	*	*	Woodbury	9	7.7
			Total	50	3.0	
State Total	118	4.0				

¹Rates per 100,000 Population

Source: Iowa Department of Public Health via the State Health Registry of Iowa
* represents a count less than 5

Age 15-19: All Transportation Mortality 2002-2006

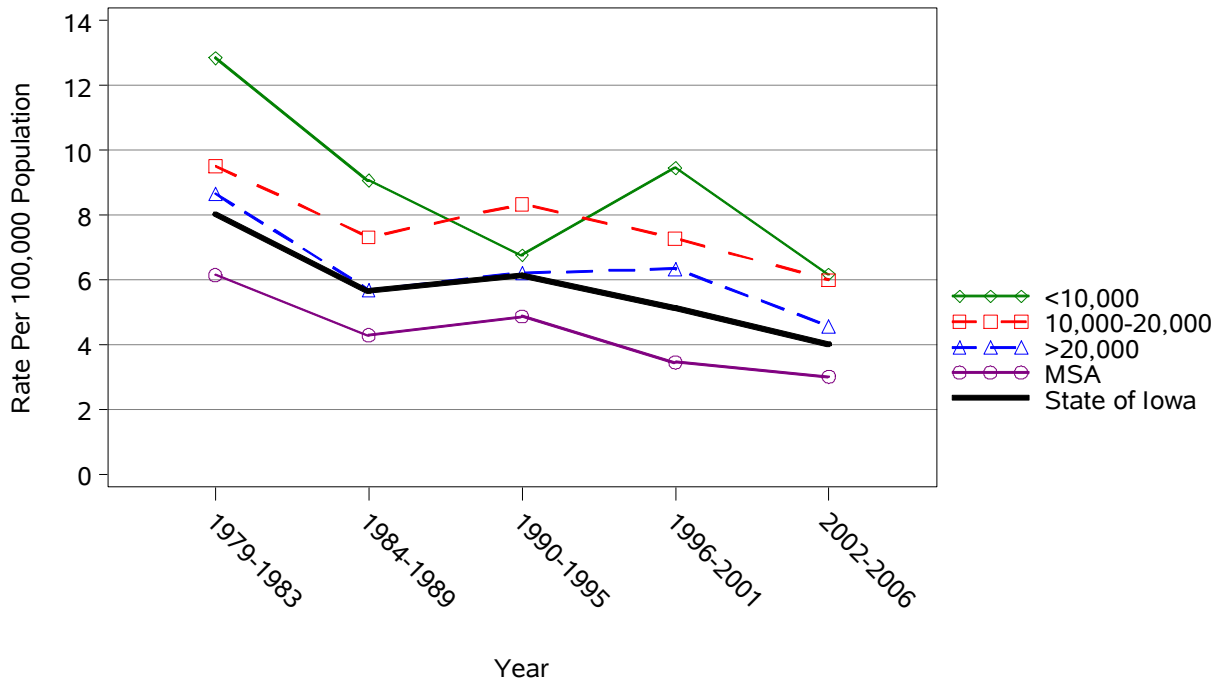
	County	#	Crude ¹	County	#	Crude ¹	
Counties with Average Population < 10,000	Adair	*	*	Lucas	*	*	
	Adams	*	*	Monona	*	*	
	Audubon	*	*	Monroe	*	*	
	Clarke	*	*	Osceola	*	*	
	Davis	*	*	Palo Alto	*	*	
	Decatur	*	*	Pocahontas	*	*	
	Fremont	*	*	Ringgold	*	*	
	Greene	*	*	Taylor	*	*	
	Howard	*	*	Van Buren	*	*	
	Humboldt	*	*	Wayne	*	*	
	Ida	*	*	Worth	*	*	
				Total	26	40.8	
	Counties with Average Population 10,000 – 20,000	Allamakee	*	*	Hardin	*	*
		Appanoose	*	*	Iowa	*	*
Buena Vista		*	*	Jefferson	*	*	
Butler		*	*	Keokuk	*	*	
Calhoun		*	*	Kossuth	*	*	
Cass		*	*	Louisa	*	*	
Cedar		*	*	Lyon	*	*	
Cherokee		*	*	Mitchell	*	*	
Chickasaw		*	*	Montgomery	*	*	
Clay		*	*	O'Brien	*	*	
Clayton		*	*	Page	*	*	
Crawford		*	*	Poweshiek	5	62.0	
Delaware		*	*	Sac	*	*	
Dickinson		*	*	Shelby	*	*	
Emmet		*	*	Tama	*	*	
Floyd		*	*	Union	*	*	
Franklin		*	*	Winnebago	*	*	
Hamilton		*	*	Wright	*	*	
Hancock	*	*	Total	64	33.0		
Counties with Average Population > 20,000	Boone	*	*	Lee	*	*	
	Buchanan	*	*	Mahaska	*	*	
	Carroll	6	75.0	Marion	5	38.3	
	Cerro Gordo	5	31.5	Marshall	*	*	
	Clinton	*	*	Muscatine	*	*	
	Des Moines	*	*	Plymouth	*	*	
	Fayette	*	*	Sioux	*	*	
	Henry	*	*	Wapello	6	49.8	
	Jackson	*	*	Webster	*	*	
	Jasper	*	*	Winneshiek	*	*	
			Total	48	20.7		
MSA Counties	Benton	*	*	Linn	11	16.2	
	Black Hawk	*	*	Madison	*	*	
	Bremer	*	*	Mills	*	*	
	Dallas	5	32.2	Polk	24	18.9	
	Dubuque	5	14.3	Pottawattamie	*	*	
	Grundy	*	*	Scott	10	17.5	
	Guthrie	*	*	Story	*	*	
	Harrison	*	*	Warren	8	48.0	
	Johnson	9	16.1	Washington	*	*	
	Jones	*	*	Woodbury	*	*	
			Total	100	16.8		
State Total	238	22.0					

¹Rates per 100,000 Population

Source: Iowa Department of Public Health via the State Health Registry of Iowa
* represents a count less than 5

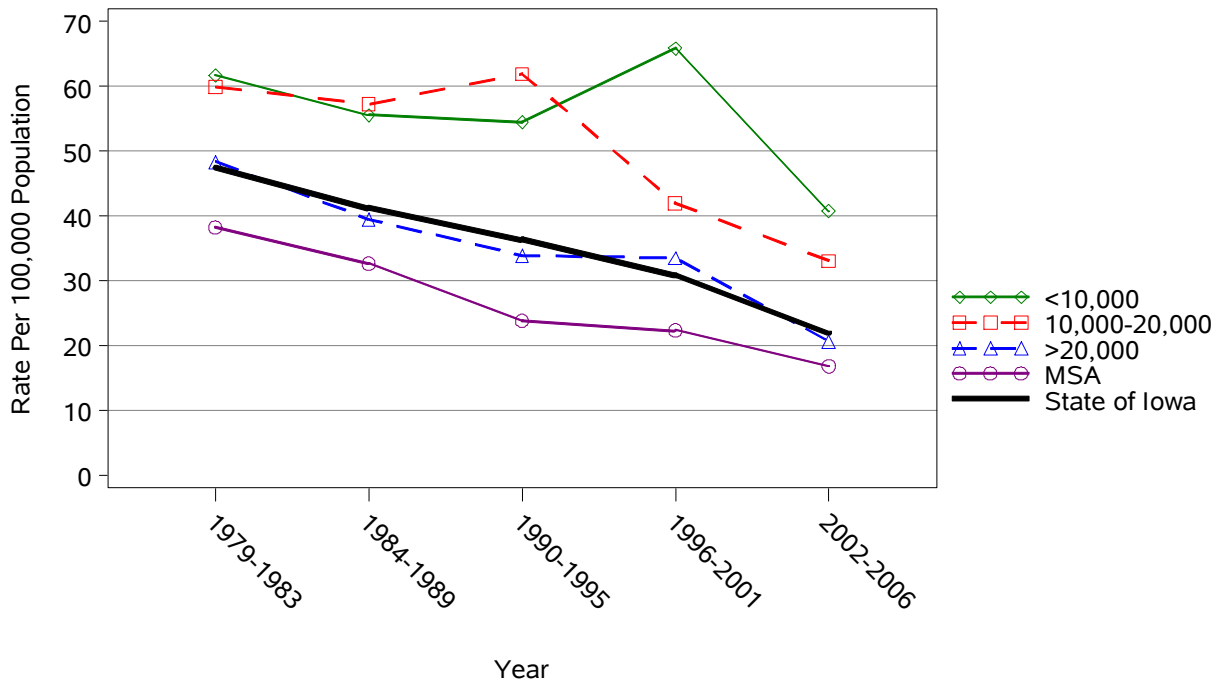
Age 0-14: All Transportation Mortality by County Group 1979-2006

Crude Rates



Age 15-19: All Transportation Mortality by County Group 1979-2006

Crude Rates



Age 0-14: Motor Vehicle Traffic Mortality 2002-2006

	County	#	Crude ¹	County	#	Crude ¹	
Counties with Average Population < 10,000	Adair	*	*	Lucas	*	*	
	Adams	*	*	Monona	*	*	
	Audubon	*	*	Monroe	*	*	
	Clarke	*	*	Osceola	*	*	
	Davis	*	*	Palo Alto	*	*	
	Decatur	*	*	Pocahontas	*	*	
	Fremont	*	*	Ringgold	*	*	
	Greene	*	*	Taylor	*	*	
	Howard	*	*	Van Buren	*	*	
	Humboldt	*	*	Wayne	*	*	
	Ida	*	*	Worth	*	*	
				Total	8	4.9	
	Counties with Average Population 10,000 – 20,000	Allamakee	*	*	Hardin	*	*
		Appanoose	*	*	Iowa	*	*
Buena Vista		*	*	Jefferson	*	*	
Butler		*	*	Keokuk	*	*	
Calhoun		*	*	Kossuth	*	*	
Cass		*	*	Louisa	*	*	
Cedar		*	*	Lyon	*	*	
Cherokee		*	*	Mitchell	*	*	
Chickasaw		*	*	Montgomery	*	*	
Clay		*	*	O'Brien	*	*	
Clayton		*	*	Page	*	*	
Crawford		*	*	Poweshiek	*	*	
Delaware		*	*	Sac	*	*	
Dickinson		*	*	Shelby	*	*	
Emmet		*	*	Tama	*	*	
Floyd		*	*	Union	*	*	
Franklin		*	*	Winnebago	*	*	
Hamilton		*	*	Wright	*	*	
Hancock		*	*	Total	26	5.2	
Counties with Average Population > 20,000	Boone	*	*	Lee	*	*	
	Buchanan	*	*	Mahaska	*	*	
	Carroll	*	*	Marion	*	*	
	Cerro Gordo	*	*	Marshall	*	*	
	Clinton	*	*	Muscatine	*	*	
	Des Moines	*	*	Plymouth	*	*	
	Fayette	*	*	Sioux	*	*	
	Henry	*	*	Wapello	*	*	
	Jackson	*	*	Webster	*	*	
	Jasper	*	*	Winneshiek	*	*	
			Total	19	3.1		
MSA Counties	Benton	*	*	Linn	*	*	
	Black Hawk	*	*	Madison	*	*	
	Bremer	*	*	Mills	*	*	
	Dallas	*	*	Polk	11	2.5	
	Dubuque	*	*	Pottawattamie	*	*	
	Grundy	*	*	Scott	*	*	
	Guthrie	*	*	Story	*	*	
	Harrison	*	*	Warren	*	*	
	Johnson	*	*	Washington	*	*	
	Jones	*	*	Woodbury	8	6.8	
				Total	40	2.4	
State Total	93	3.2					

¹Rates per 100,000 Population

Source: Iowa Department of Public Health via the State Health Registry of Iowa
* represents a count less than 5

Age 15-19: Motor Vehicle Traffic Mortality 2002-2006

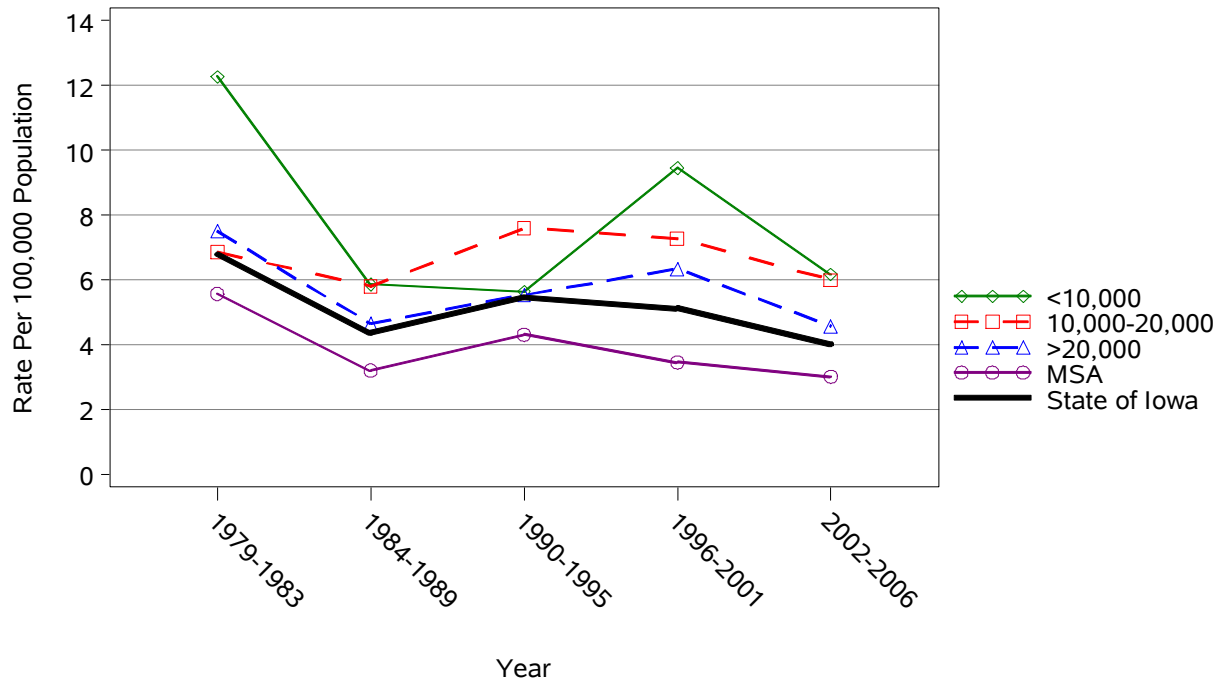
	County	#	Crude ¹	County	#	Crude ¹	
Counties with Average Population < 10,000	Adair	*	*	Lucas	*	*	
	Adams	*	*	Monona	*	*	
	Audubon	*	*	Monroe	*	*	
	Clarke	*	*	Osceola	*	*	
	Davis	*	*	Palo Alto	*	*	
	Decatur	*	*	Pocahontas	*	*	
	Fremont	*	*	Ringgold	*	*	
	Greene	*	*	Taylor	*	*	
	Howard	*	*	Van Buren	*	*	
	Humboldt	*	*	Wayne	*	*	
	Ida	*	*	Worth	*	*	
				Total	24	37.7	
	Counties with Average Population 10,000 – 20,000	Allamakee	*	*	Hardin	*	*
		Appanoose	*	*	Iowa	*	*
Buena Vista		*	*	Jefferson	*	*	
Butler		*	*	Keokuk	*	*	
Calhoun		*	*	Kossuth	*	*	
Cass		*	*	Louisa	*	*	
Cedar		*	*	Lyon	*	*	
Cherokee		*	*	Mitchell	*	*	
Chickasaw		*	*	Montgomery	*	*	
Clay		*	*	O'Brien	*	*	
Clayton		*	*	Page	*	*	
Crawford		*	*	Poweshiek	5	62.0	
Delaware		*	*	Sac	*	*	
Dickinson		*	*	Shelby	*	*	
Emmet		*	*	Tama	*	*	
Floyd		*	*	Union	*	*	
Franklin		*	*	Winnebago	*	*	
Hamilton		*	*	Wright	*	*	
Hancock	*	*	Total	63	32.5		
Counties with Average Population > 20,000	Boone	*	*	Lee	2	15.5	
	Buchanan	*	*	Mahaska	1	12.4	
	Carroll	6	75.0	Marion	5	38.3	
	Cerro Gordo	5	31.5	Marshall	2	15.1	
	Clinton	*	*	Muscatine	1	7.0	
	Des Moines	*	*	Plymouth	1	10.5	
	Fayette	*	*	Sioux	3	18.4	
	Henry	*	*	Wapello	6	49.8	
	Jackson	*	*	Webster	4	25.2	
	Jasper	*	*	Winneshiek	1	9.4	
			Total	48	20.7		
MSA Counties	Benton	*	*	Linn	9	13.3	
	Black Hawk	*	*	Madison	*	*	
	Bremer	*	*	Mills	*	*	
	Dallas	5	32.2	Polk	23	18.1	
	Dubuque	5	14.3	Pottawattamie	*	*	
	Grundy	*	*	Scott	10	17.5	
	Guthrie	*	*	Story	*	*	
	Harrison	*	*	Warren	8	48.0	
	Johnson	9	16.1	Washington	*	*	
	Jones	*	*	Woodbury	*	*	
			Total	96	16.2		
State Total	231	21.3					

¹Rates per 100,000 Population

Source: Iowa Department of Public Health via the State Health Registry of Iowa
* represents a count less than 5

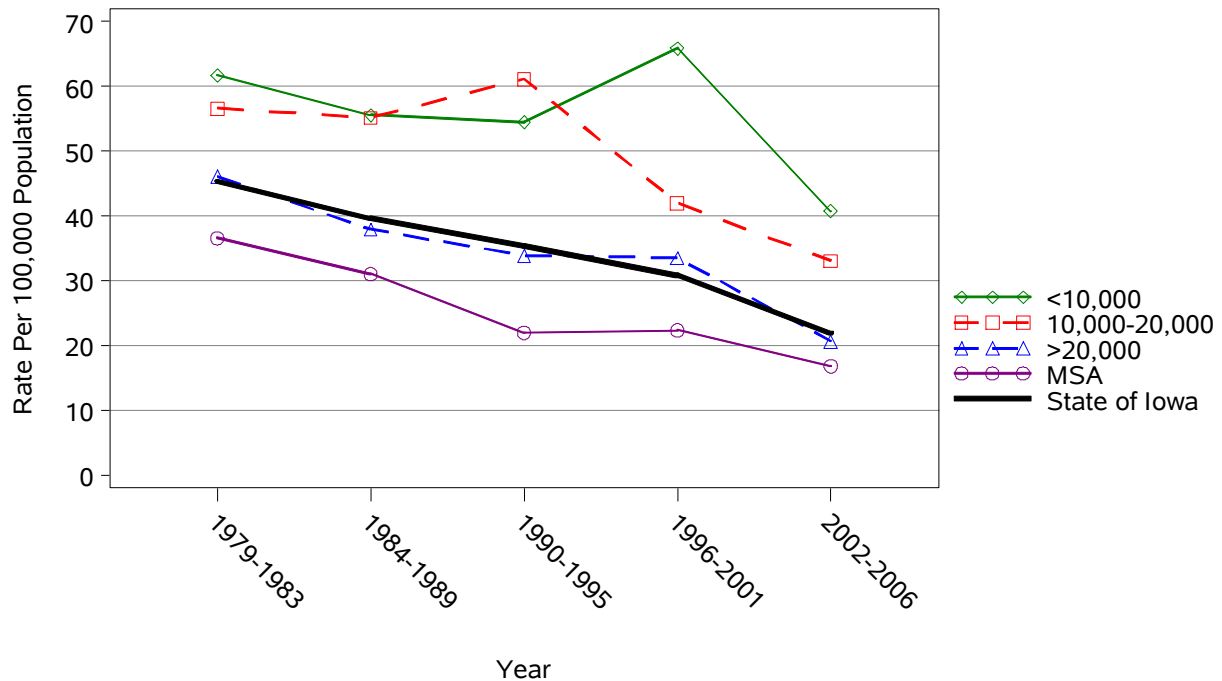
Age 0-14: Motor Vehicle Traffic Mortality by County Group 1979-2006

Crude Rates

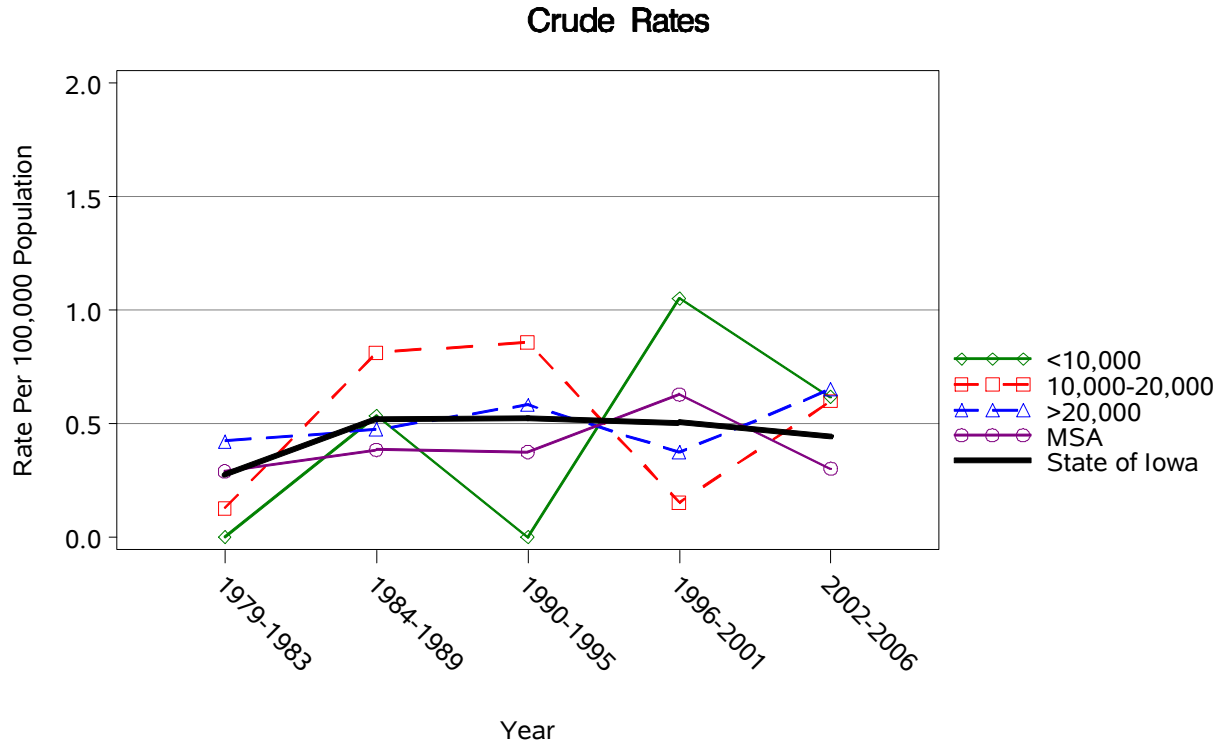


Age 15-19: Motor Vehicle Traffic Mortality by County Group 1979-2006

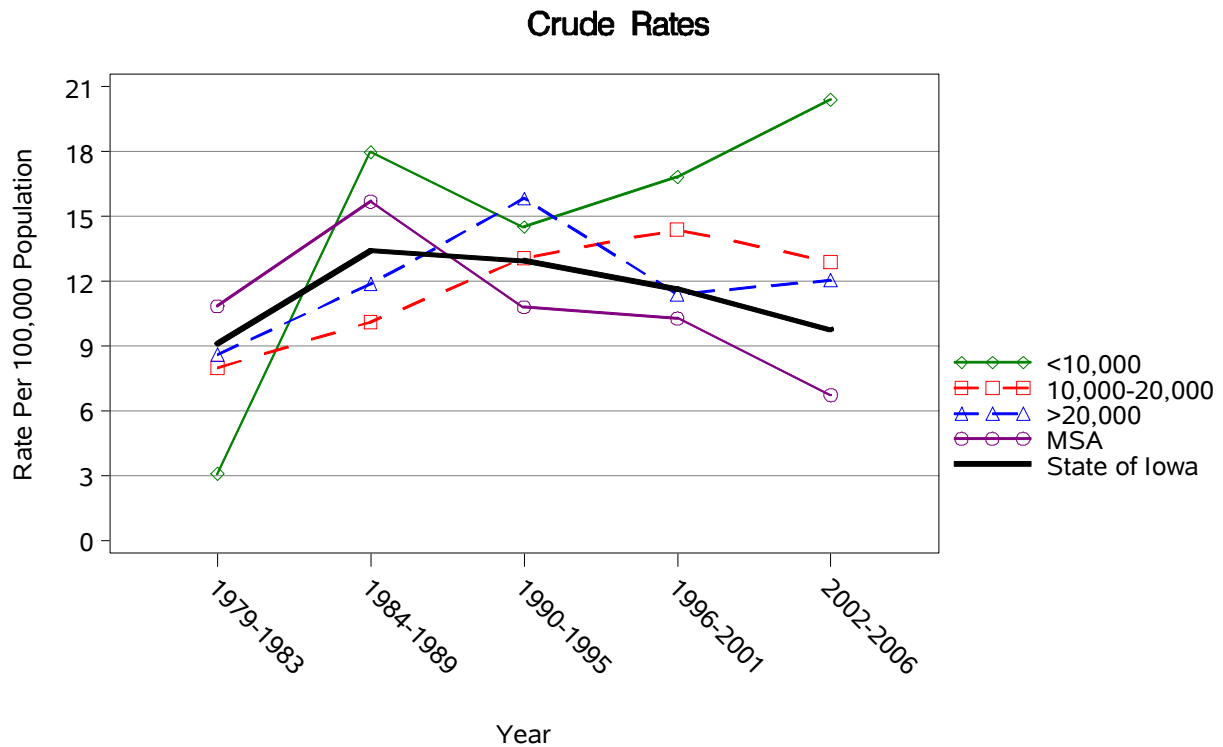
Crude Rates



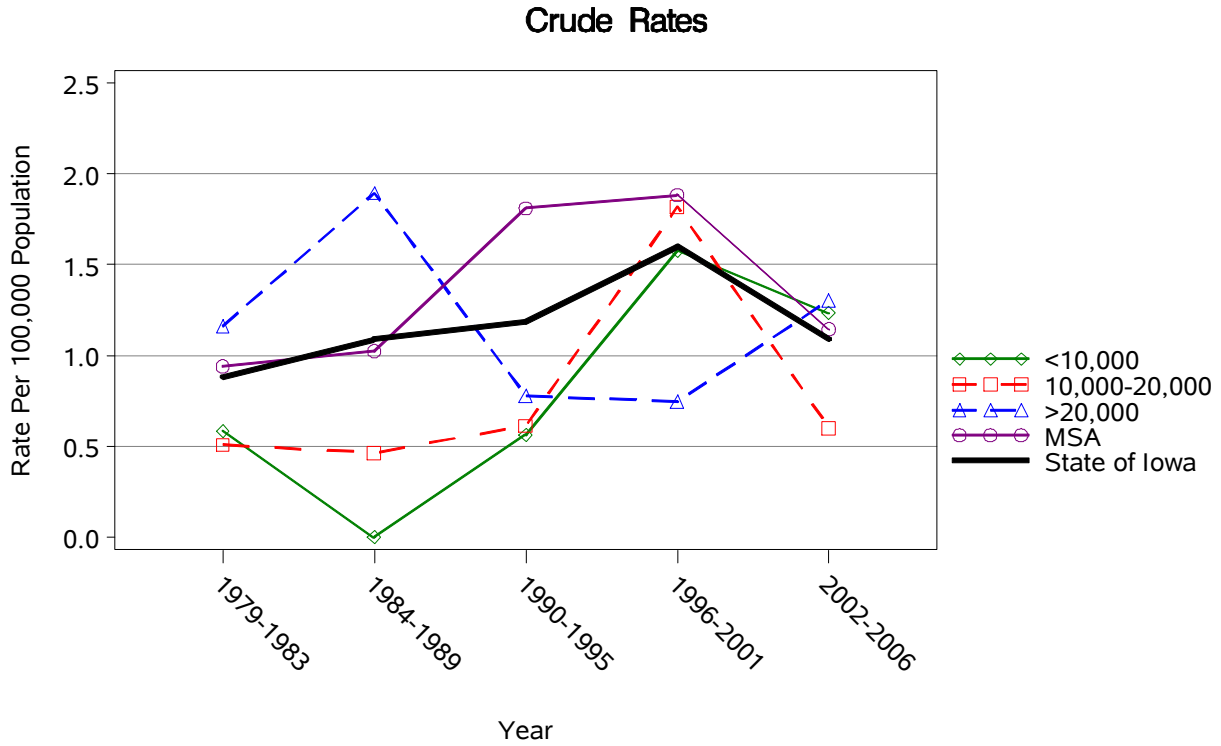
Age 0-14: Suicides by County Group 1979-2006



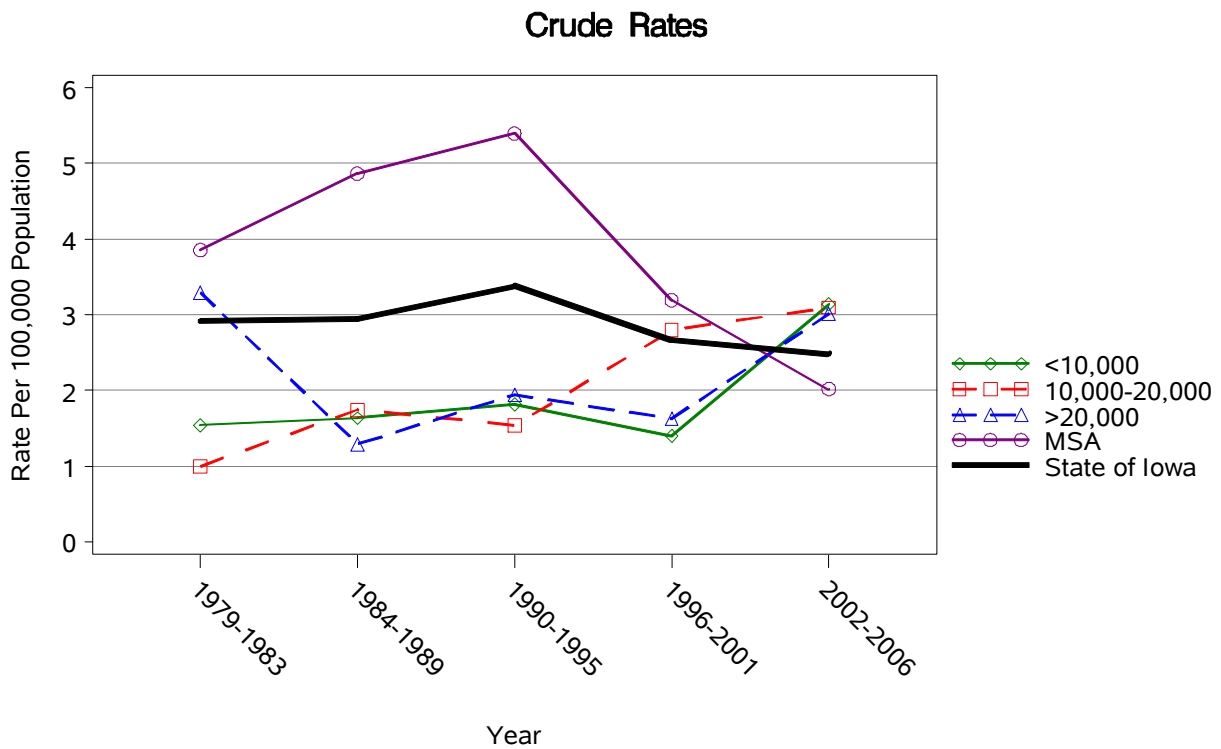
Age 15-19: Suicides by County Group 1979-2006



Age 0-14: Homicides by County Group 1979-2006



Age 15-19: Homicides by County Group 1979-2006



[This page has been intentionally left blank.]