

Cancer Incidence and Mortality

Cancer is the second leading cause of death in Iowa. From 1990 through 1998, there were 57,359 Iowans who died from cancer. Cancer accounted for about one out of every four deaths in Iowa over this time period. During this same period, 134,158 cancers were newly diagnosed among residents of Iowa. Cancer affects Iowans in every county. Although it occurs in people of all ages, more than 80 percent of new cancers occur in those 55 years of age and older.

For all sites of cancer incidence and mortality the age-adjusted rates by county grouping increased as the average population increased. The crude rates, however, show the opposite trend, indicating that a larger proportion of older people reside in the more rural counties (see tables and graph in Demographics). During the 1990s, declines in cancer incidence and mortality have also been seen in the United States. Today, less than half of the people in Iowa newly diagnosed with a cancer will die from it. Survival rates, however, vary considerably by cancer site and as the number of cancer deaths gets closer to the number of observed incident cancers, the survival rate for that cancer decreases.

Tobacco use is the leading modifiable risk factor for cancer. Tobacco-associated cancers include the lung & bronchus, oral cavity (excluding lip), esophagus, larynx, pancreas, uterine cervix, urinary bladder, and kidney & renal pelvis. Alcohol consumption is also a known risk factor for cancers of the oral cavity (excluding lip), esophagus, and larynx. Ongoing research indicates that dietary factors may play an important role in the occurrence of cancers of the prostate and colorectum. Other important risk factors include obesity for cancer of the uterine corpus, excessive sunlight exposure for skin melanoma, and genetic predisposition (or positive family history) for breast cancer.

The Iowa Cancer Registry has been recording the occurrence of cancer in Iowa since 1973. It receives mortality data from the Iowa Department of Public Health. The Registry's incidence and mortality databases have been used to generate the cancer incidence and cancer mortality statistics provided in this section of the Iowa Health Fact Book.

FOUR PRIMARY TYPES OF CANCER IN IOWA...

Lung & bronchus
Colorectum
Prostate
Female Breast

MOST COMMON CANCERS IN IOWA....

Females

Breast
Colorectum
Lung

Males

Prostate
Lung
Colorectum

Children (0-19)

Leukemia
Intracranial & Intraspinal neoplasms
Lymphomas

All Sites of Cancer Incidence 1990-1998

TOTAL	Number	Crude ¹	Adjusted ^{1,2}
State of Iowa	134,158	527.5	475.5

	County	Number	Crude ¹	Adjusted ^{1,2}	County	Number	Crude ¹	Adjusted ^{1,2}
Counties with Average Population <10,000	Adair	421	564.5	371.4	Lucas	496	608.3	431.0
	Adams	256	622.6	401.2	Monroe	462	631.4	459.2
	Audubon	449	712.7	454.0	Osceola	370	576.2	420.1
	Clarke	395	531.4	410.3	Pocahontas	561	682.8	459.2
	Davis	436	577.0	446.0	Ringgold	341	706.2	427.3
	Decatur	444	602.9	460.2	Taylor	434	678.2	434.2
	Fremont	466	643.7	462.5	Van Buren	418	598.5	442.7
	Howard	547	621.0	430.3	Wayne	451	726.7	451.7
	Ida	445	603.3	441.1	Worth	422	596.6	432.2
	<u>Group Totals</u>							
Number:	7,814							
Crude:	623.9							
Adjusted:	435.1							

	County	Number	Crude	Adjusted	County	Number	Crude	Adjusted
Counties with Average Population 10,000 to 20,000	Allamakee	715	567.7	425.6	Henry	922	520.5	462.6
	Appanoose	798	648.7	461.4	Humboldt	647	686.0	474.1
	Buena Vista	1,130	631.2	505.4	Iowa	737	544.2	438.1
	Butler	945	667.7	481.2	Jefferson	747	496.4	475.2
	Calhoun	689	665.4	443.5	Jones	1,023	569.1	495.2
	Cass	849	631.3	434.2	Keokuk	695	667.5	478.1
	Cedar	803	505.1	410.5	Kossuth	942	577.7	439.0
	Cherokee	777	629.1	471.6	Louisa	526	497.4	452.2
	Chickasaw	660	549.3	445.8	Lyon	610	567.4	445.5
	Clay	918	579.2	485.6	Madison	622	525.1	439.9
	Clayton	1,054	622.4	490.3	Mills	646	528.8	512.2
	Crawford	865	581.1	464.0	Mitchell	657	663.5	456.1
	Delaware	730	442.7	409.1	Monona	686	757.4	480.2
	Dickinson	959	686.3	480.0	Montgomery	707	657.9	456.3
	Emmet	618	608.9	458.6	O'Brien	933	680.0	484.8
	Floyd	986	655.8	486.7	Page	921	604.5	435.2
	Franklin	599	599.6	442.3	Palo Alto	691	743.5	518.1
	Greene	582	642.5	420.0	Poweshiek	894	525.1	433.7
	Grundy	648	593.1	436.8	Sac	703	647.2	436.1
	Guthrie	685	675.6	476.7	Shelby	650	550.3	388.7
Hamilton	903	624.3	481.1	Tama	1,018	642.5	481.1	
Hancock	579	526.4	411.0	Union	700	619.4	488.0	
Hardin	1,194	709.5	495.5	Winnebago	571	530.3	404.7	
Harrison	875	649.6	494.9	Wright	912	713.3	487.2	

	County	Number	Crude	Adjusted	County	Number	Crude	Adjusted
Counties with Average Population >20,000	Benton	1,121	522.2	450.4	Mahaska	1,039	532.3	443.3
	Boone	1,339	582.0	471.1	Marion	1,444	523.2	457.8
	Bremer	1,122	538.8	461.8	Marshall	2,094	606.5	495.6
	Buchanan	1,007	530.5	484.3	Muscatine	1,790	487.5	487.7
	Carroll	1,219	629.0	505.0	Plymouth	1,211	557.7	476.4
	Cerro Gordo	2,465	588.2	480.8	Sioux	1,301	468.8	439.9
	Clinton	2,633	576.5	497.4	Story	2,347	350.4	452.3
	Des Moines	2,167	565.8	484.1	Wapello	1,987	618.1	482.9
	Fayette	1,231	623.8	482.0	Washington	961	524.5	423.6
	Jackson	1,058	585.4	490.3	Webster	2,296	645.2	516.7
	Jasper	1,777	559.7	469.7	Winnesiek	857	454.7	411.3
	Lee	1,974	565.1	478.3				

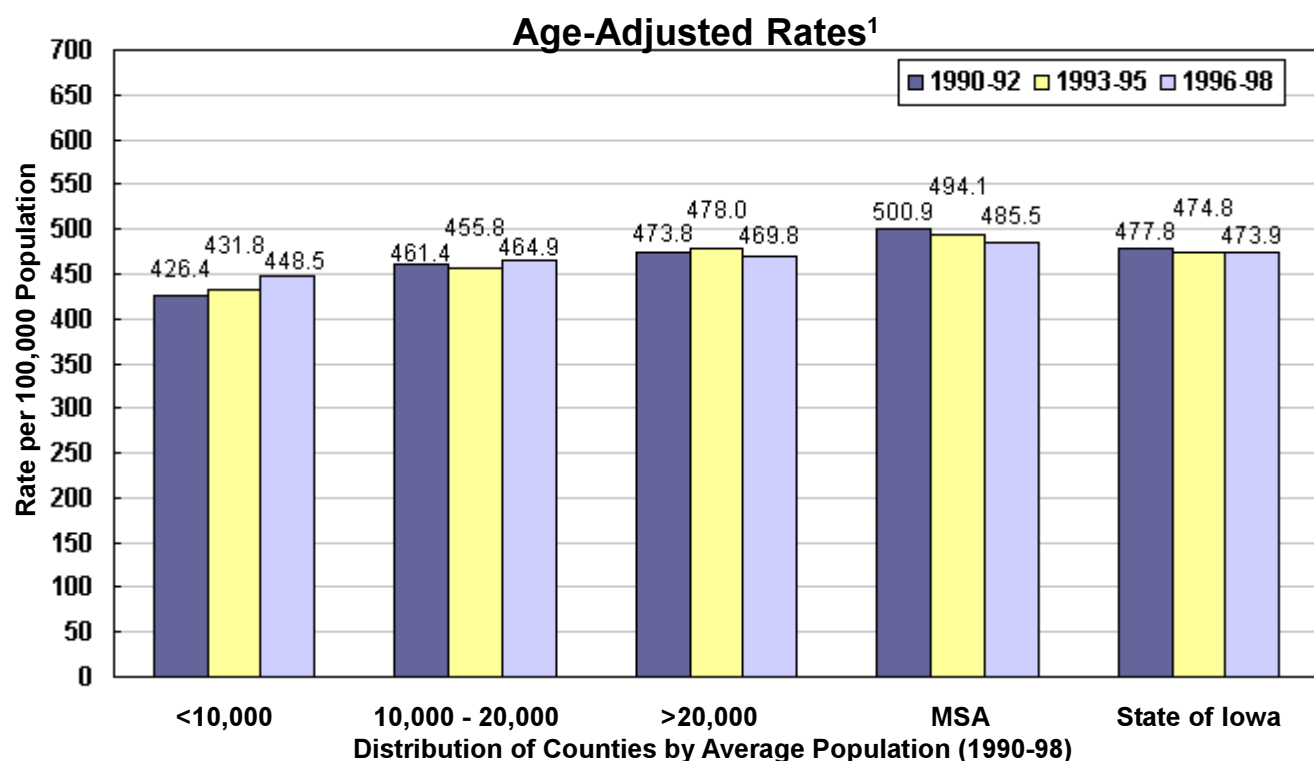
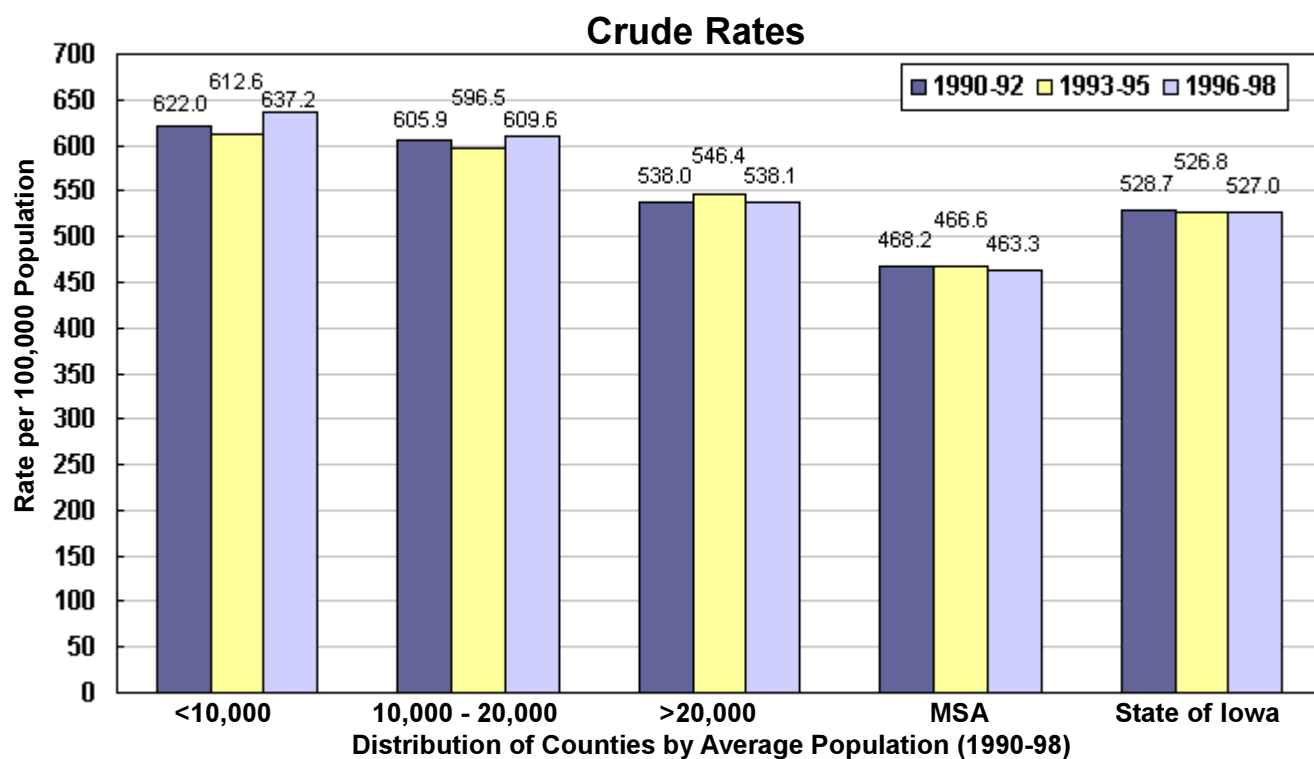
	County	Number	Crude	Adjusted	County	Number	Crude	Adjusted
MSA Counties	Black Hawk	5,964	538.3	518.5	Polk	13,994	450.0	493.8
	Dallas	1,420	479.6	462.3	Pottawattamie	3,782	500.5	476.7
	Dubuque	4,297	544.2	514.9	Scott	6,300	449.6	493.4
	Johnson	2,726	303.8	459.4	Warren	1,400	406.4	452.6
	Linn	7,577	477.1	494.7	Woodbury	4,723	520.5	494.5
	<u>Group Totals</u>							
Number:	52,183							
Crude:	466.0							
Adjusted:	493.4							

¹Rates per 100,000 population

²Adjusted to Year 2000 US population

Source: Iowa Cancer Registry,
The University of Iowa

All Sites of Cancer Incidence by County Group 1990-1998



¹Adjusted to Year 2000 US population

All Sites of Cancer Mortality 1990-1998

TOTAL	Number	Crude ¹	Adjusted ^{1,2}
State of Iowa	57,359	225.5	197.1

	Counties with Average Population <10,000				Counties with Average Population 10,000 to 20,000			
	County	Number	Crude ¹	Adjusted ^{1,2}	County	Number	Crude ¹	Adjusted ^{1,2}
Counties with Average Population <10,000	Adair	218	292.3	173.8	Lucas	226	277.2	187.5
	Adams	129	313.7	194.9	Monroe	208	284.3	197.2
	Audubon	186	295.2	180.3	Osceola	153	238.3	162.7
	Clarke	188	252.9	184.6	Pocahontas	263	320.1	203.3
	Davis	176	232.9	176.6	Ringgold	148	306.5	165.0
Group Totals	Decatur	214	290.6	207.1	Taylor	193	301.6	173.8
Number: 3,571	Fremont	231	319.1	219.8	Van Buren	182	260.6	188.0
Crude: 285.1	Howard	253	287.2	181.6	Wayne	208	335.1	191.7
Adjusted: 186.8	Ida	184	249.4	171.2	Worth	211	298.3	201.2

	Counties with Average Population >20,000				MSA Counties			
	County	Number	Crude	Adjusted	County	Number	Crude	Adjusted
Counties with Average Population >20,000	Allamakee	293	232.7	165.2	Polk	5,898	189.7	210.6
	Appanoose	313	254.5	170.4	Pottawattamie	1,664	220.2	209.7
	Buena Vista	449	250.8	190.5	Scott	2,633	187.9	208.8
	Butler	418	295.4	201.0	Warren	572	166.0	185.1
	Calhoun	316	305.2	186.7	Woodbury	1,973	217.4	201.7
	Cass	408	303.4	199.9				
	Cedar	374	235.3	180.4				
Group Totals	Cherokee	293	237.2	170.6				
Number: 16,256	Chickasaw	267	222.2	168.9				
Crude: 260.3	Clay	369	232.8	186.5				
Adjusted: 187.7	Clayton	452	266.9	197.5				
	Crawford	349	234.4	181.9				
	Delaware	337	204.4	185.1				
	Dickinson	389	278.4	188.6				
	Emmet	265	261.1	187.4				
	Floyd	440	292.6	209.6				
	Franklin	235	235.2	160.9				
	Greene	258	284.8	172.8				
	Grundy	249	227.9	159.1				
	Guthrie	285	281.1	186.9				
	Hamilton	391	270.3	199.2				
	Hancock	235	213.7	163.4				
	Hardin	542	322.0	211.0				
	Harrison	412	305.9	221.8				

	Counties with Average Population >20,000				MSA Counties			
	County	Number	Crude	Adjusted	County	Number	Crude	Adjusted
Counties with Average Population >20,000	Benton	522	243.3	204.9	Black Hawk	2,508	226.4	216.4
	Boone	556	241.7	183.7	Dallas	584	197.2	186.0
	Bremer	466	223.8	181.6	Dubuque	1,795	227.3	209.6
	Buchanan	484	255.0	228.4	Johnson	1,048	116.8	185.4
	Carroll	475	245.1	188.7	Linn	3,061	192.7	200.2
Group Totals	Cerro Gordo	1,112	265.3	207.1				
Number: 15,796	Clinton	1,147	251.1	212.6				
Crude: 234.4	Des Moines	932	243.3	201.2				
Adjusted: 198.6	Fayette	527	267.1	199.3				
	Jackson	447	247.3	200.7				
	Jasper	775	244.1	199.8				
	Lee	947	271.1	224.5				

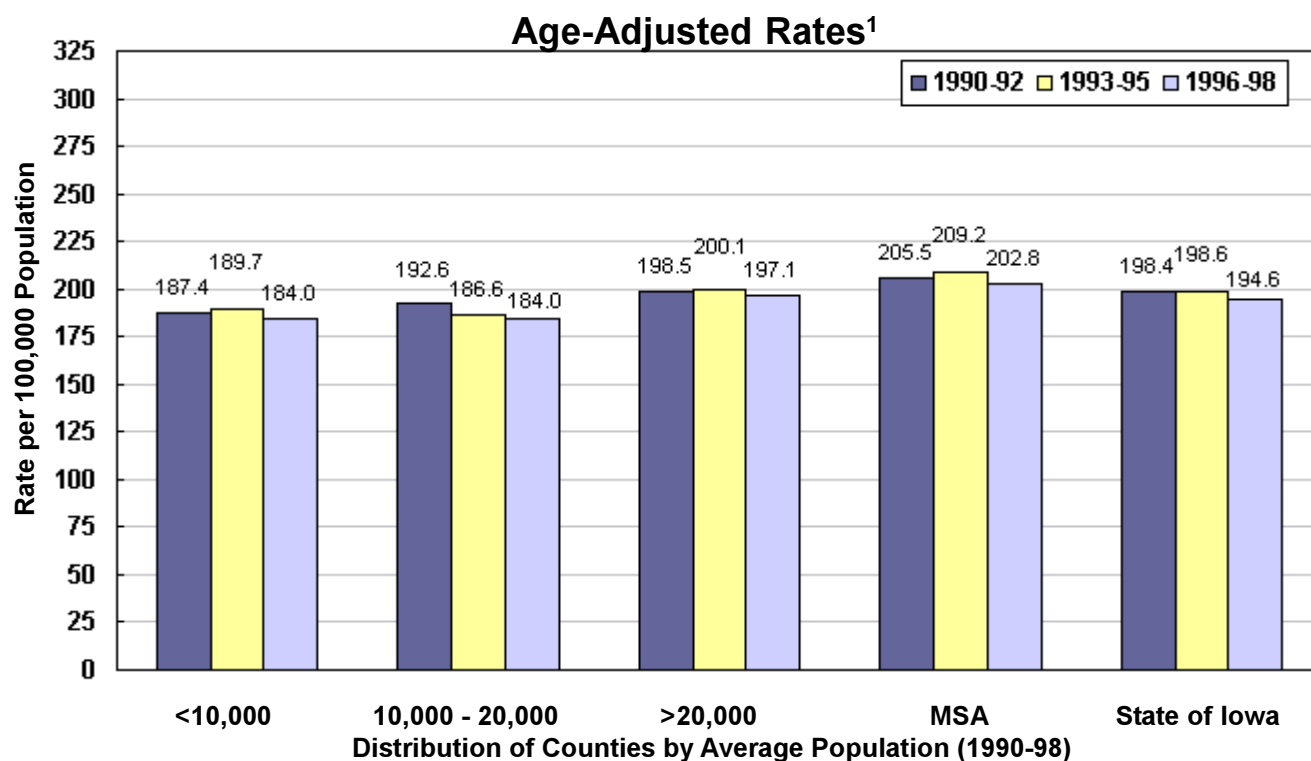
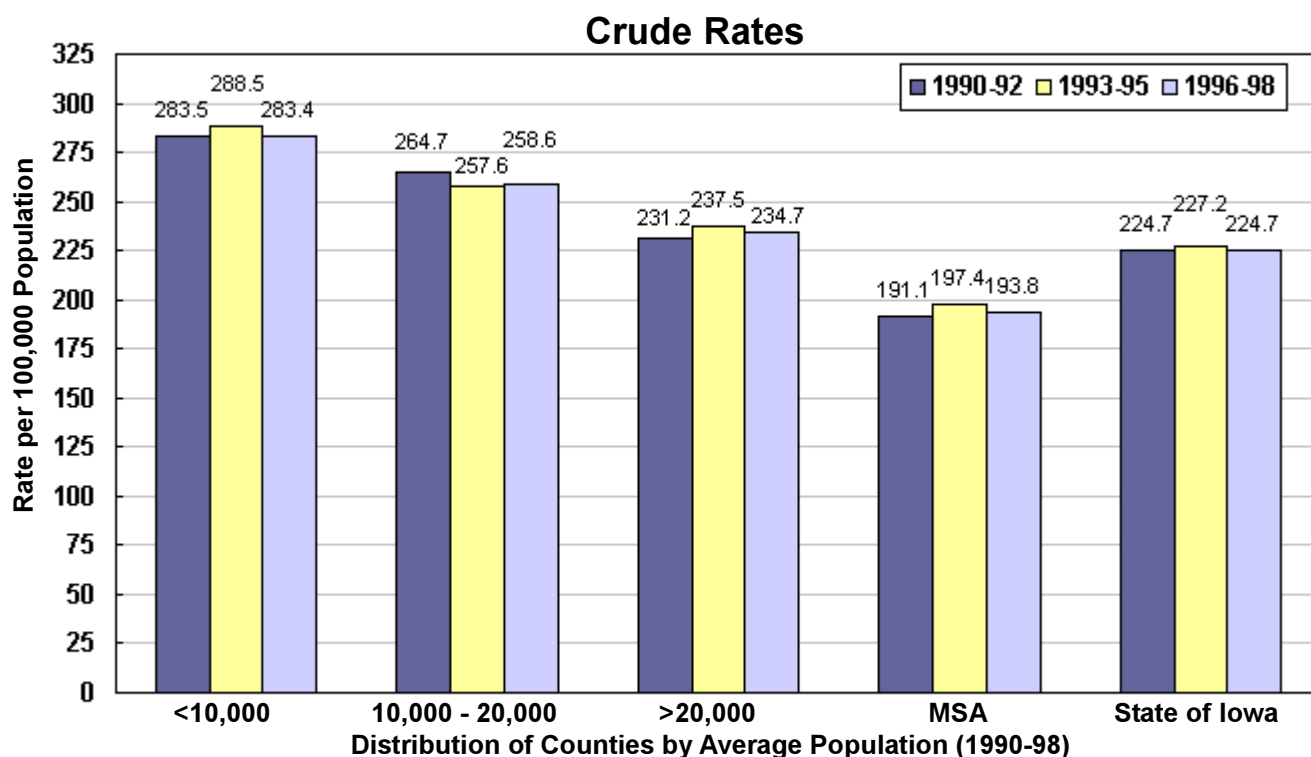
	Counties with Average Population >20,000				MSA Counties			
	County	Number	Crude	Adjusted	County	Number	Crude	Adjusted
Counties with Average Population >20,000	Benton	522	243.3	204.9	Black Hawk	2,508	226.4	216.4
	Boone	556	241.7	183.7	Dallas	584	197.2	186.0
	Bremer	466	223.8	181.6	Dubuque	1,795	227.3	209.6
	Buchanan	484	255.0	228.4	Johnson	1,048	116.8	185.4
	Carroll	475	245.1	188.7	Linn	3,061	192.7	200.2
Group Totals	Cerro Gordo	1,112	265.3	207.1				
Number: 15,796	Clinton	1,147	251.1	212.6				
Crude: 234.4	Des Moines	932	243.3	201.2				
Adjusted: 198.6	Fayette	527	267.1	199.3				
	Jackson	447	247.3	200.7				
	Jasper	775	244.1	199.8				
	Lee	947	271.1	224.5				

¹Rates per 100,000 population

²Adjusted to Year 2000 US population

Source: IDPH Vital Records via Iowa Cancer Registry, The University of Iowa

All Sites of Cancer Mortality by County Group 1990-1998



¹Adjusted to Year 2000 US population

Prostate Cancer Incidence 1990-1998

TOTAL	Number	Crude ¹	Adjusted ^{1,2}
State of Iowa	20,304	164.3	166.4

	Counties with Average Population <10,000				Counties with Average Population 10,000 to 20,000			
	County	Number	Crude ¹	Adjusted ^{1,2}	County	Number	Crude ¹	Adjusted ^{1,2}
Group Totals								
Number:	1,269				6,076			
Crude:	209.7				199.7			
Adjusted:	151.3				164.0			

	Counties with Average Population >20,000				MSA Counties			
	County	Number	Crude	Adjusted	County	Number	Crude	Adjusted
Group Totals								
Number:	5,478				7,481			
Crude:	166.3				138.2			
Adjusted:	162.9				172.9			

	Counties with Average Population >20,000				MSA Counties			
	County	Number	Crude	Adjusted	County	Number	Crude	Adjusted
Group Totals								
Number:	5,478				7,481			
Crude:	166.3				138.2			
Adjusted:	162.9				172.9			

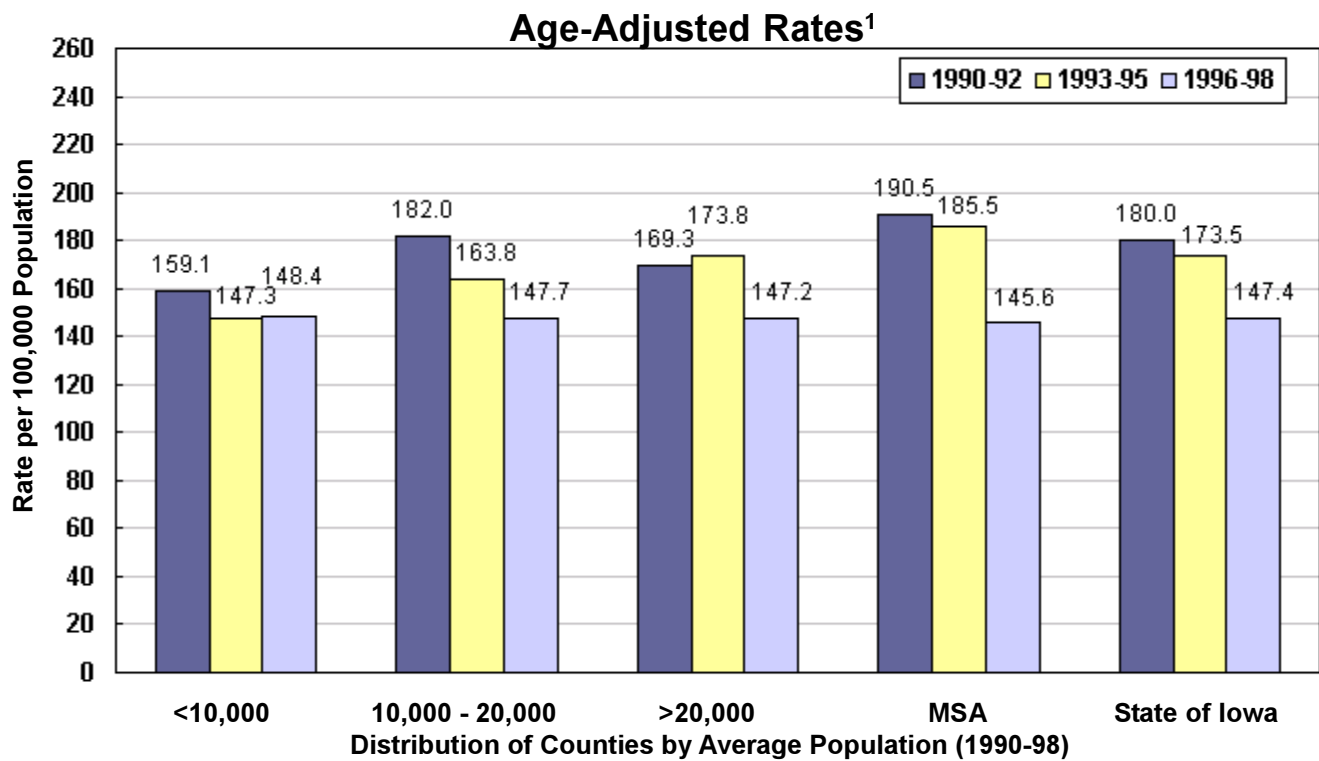
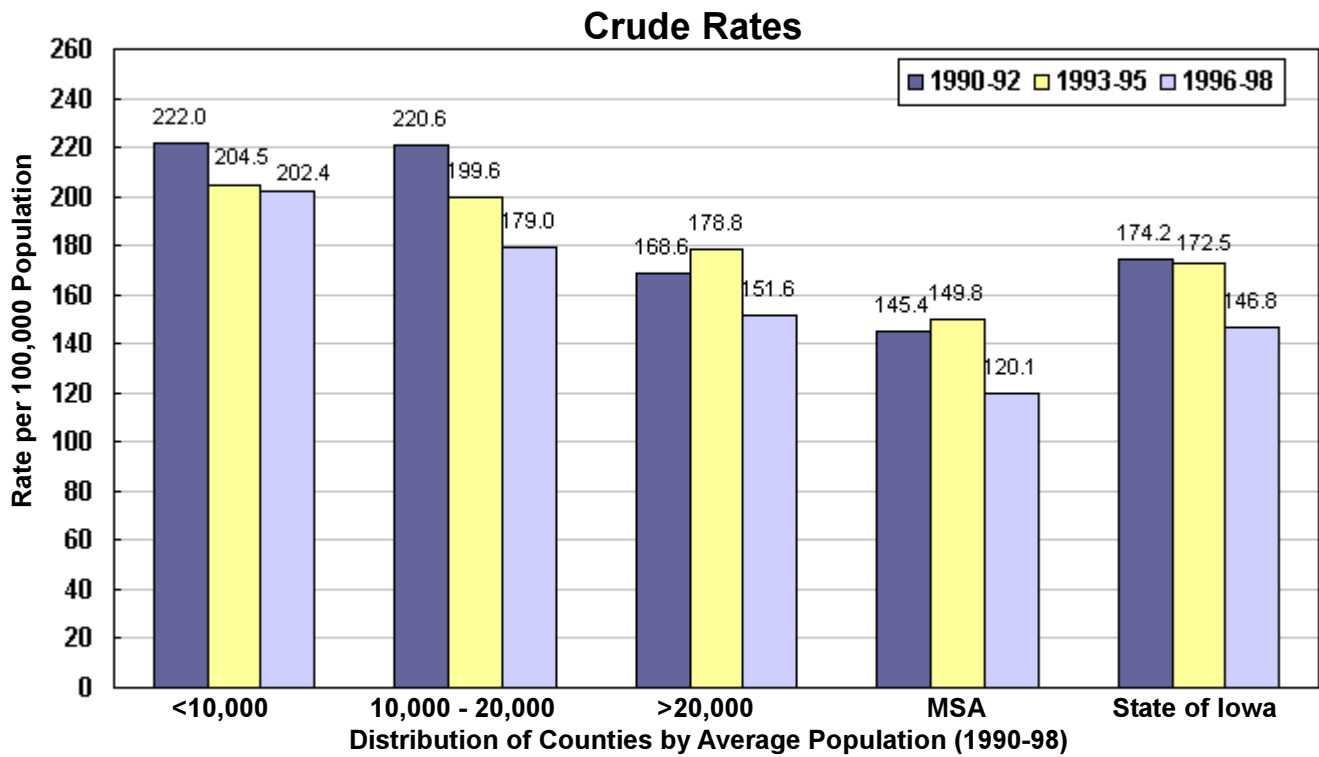
	Counties with Average Population >20,000				MSA Counties			
	County	Number	Crude	Adjusted	County	Number	Crude	Adjusted
Group Totals								
Number:	5,478				7,481			
Crude:	166.3				138.2			
Adjusted:	162.9				172.9			

¹Rates per 100,000 population

²Adjusted to Year 2000 US population

Source: Iowa Cancer Registry,
The University of Iowa

Prostate Cancer Incidence by County Group 1990-1998



¹Adjusted to Year 2000 US population

Prostate Cancer Mortality 1990-1998

TOTAL	Number	Crude ¹	Adjusted ^{1,2}
State of Iowa	4,012	32.5	35.9

	County				County				
	Number	Crude ¹	Adjusted ^{1,2}	Number	Crude ¹	Adjusted ^{1,2}	Number	Crude ¹	Adjusted ^{1,2}
Counties with Average Population <10,000	Adair	20	55.5	36.1	Lucas	14	36.0	26.6	
	Adams	12	59.4	38.8	Monroe	15	42.4	35.6	
	Audubon	20	66.0	43.5	Osceola	16	51.1	40.1	
	Clarke	14	39.4	32.3	Pocahontas	18	45.2	32.7	
	Davis	19	51.3	45.1	Ringgold	15	65.3	40.1	
	Decatur	21	58.9	42.9	Taylor	15	49.3	31.7	
	Fremont	17	49.4	36.1	Van Buren	15	43.4	33.9	
	Howard	26	60.4	42.1	Wayne	24	81.2	45.9	
	Ida	19	53.2	41.7	Worth	17	49.5	34.9	
	Group Totals								
Number:	317								
Crude:	52.4								
Adjusted:	37.7								

	County				County			
	Number	Crude	Adjusted	Number	Crude	Adjusted	Number	Crude
Counties with Average Population 10,000 to 20,000	Allamakee	28	45.2	38.9	Henry	31	34.6	35.1
	Appanoose	23	39.1	28.4	Humboldt	21	45.8	33.1
	Buena Vista	42	48.2	42.5	Iowa	24	36.5	33.6
	Butler	32	46.1	36.9	Jefferson	20	27.2	30.5
	Calhoun	22	43.7	32.0	Jones	27	28.9	31.9
	Cass	32	49.8	37.5	Keokuk	19	37.4	27.9
	Cedar	29	37.3	32.9	Kossuth	34	42.7	36.4
	Cherokee	24	40.3	32.4	Louisa	12	22.6	23.4
	Chickasaw	18	30.1	28.0	Lyon	19	36.0	33.2
	Clay	25	33.0	32.2	Madison	31	53.4	50.6
	Clayton	36	43.1	35.4	Mills	15	24.6	31.5
	Crawford	22	30.2	27.7	Mitchell	25	51.9	37.8
	Delaware	22	27.1	31.3	Monona	36	83.4	54.9
	Dickinson	28	41.7	31.6	Montgomery	19	37.3	26.1
	Emmet	22	44.9	36.3	O'Brien	26	39.3	31.7
	Floyd	41	57.3	47.9	Page	31	41.1	32.8
	Franklin	14	29.0	22.5	Palo Alto	30	66.6	49.1
	Greene	20	46.1	34.6	Poweshiek	29	35.3	33.7
	Grundy	17	32.3	26.6	Sac	27	50.9	35.1
	Guthrie	25	51.2	39.5	Shelby	27	46.7	34.6
Hamilton	28	39.9	39.4	Tama	30	39.0	31.8	
Hancock	20	37.2	34.6	Union	23	43.1	39.7	
Hardin	33	40.4	30.8	Winnebago	31	59.3	46.7	
Harrison	34	52.3	43.8	Wright	27	44.2	31.6	

	County				County			
	Number	Crude	Adjusted	Number	Crude	Adjusted	Number	Crude
Counties with Average Population >20,000	Benton	33	31.3	34.2	Mahaska	37	38.8	38.2
	Boone	43	39.0	36.3	Marion	44	32.1	31.0
	Bremer	49	48.3	47.2	Marshall	80	47.3	42.9
	Buchanan	41	43.9	49.5	Muscatine	47	26.1	32.0
	Carroll	41	43.7	40.0	Plymouth	40	37.5	37.0
	Cerro Gordo	56	28.2	28.0	Sioux	35	25.9	28.8
	Clinton	62	28.2	30.9	Story	83	24.0	43.7
	Des Moines	59	32.2	35.1	Wapello	58	37.7	35.9
	Fayette	34	35.3	31.7	Washington	42	47.4	42.1
	Jackson	42	47.2	46.0	Webster	59	34.7	33.1
	Jasper	58	37.1	39.7	Winneshek	27	29.2	28.8
	Lee	54	31.4	34.2				

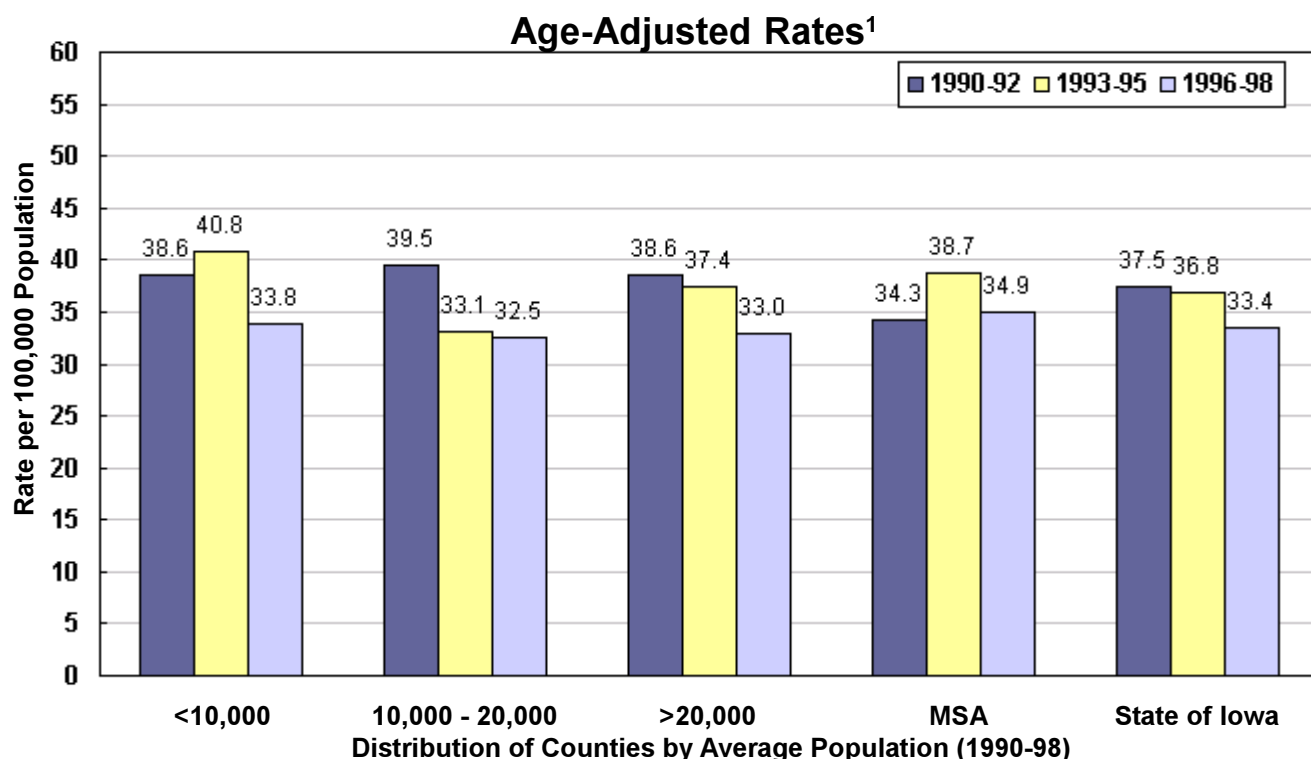
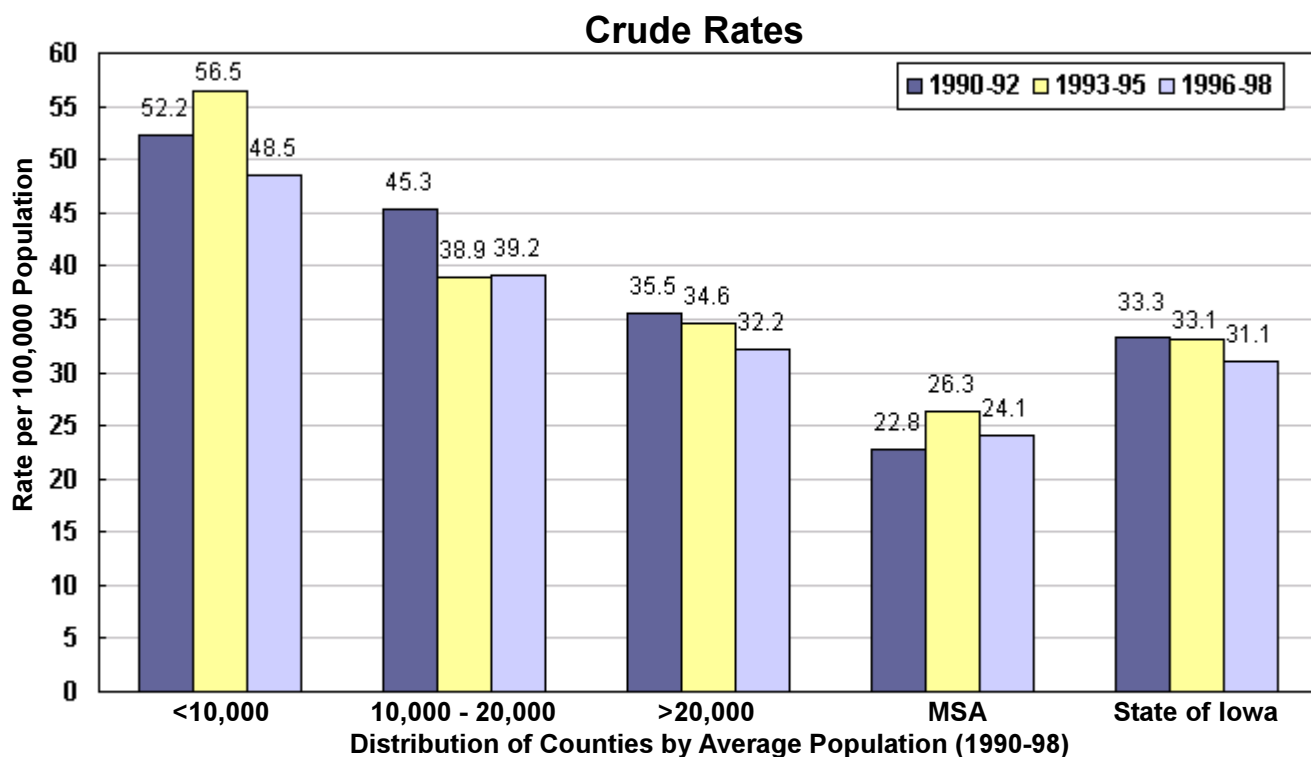
	County				County				
	Number	Crude	Adjusted	Number	Crude	Adjusted	Number	Crude	Adjusted
MSA Counties	Black Hawk	184	34.8	43.8	Polk	361	24.3	40.0	
	Dallas	39	26.8	34.7	Pottawattamie	80	22.0	26.7	
	Dubuque	99	25.9	34.2	Scott	148	21.8	34.4	
	Johnson	67	15.0	35.1	Warren	32	19.0	30.1	
	Linn	207	26.8	38.0	Woodbury	103	23.4	28.1	
	Group Totals								
Number:	1,320								
Crude:	24.4								
Adjusted:	36.0								

¹Rates per 100,000 population

²Adjusted to Year 2000 US population

Source: IDPH Vital Records via Iowa Cancer Registry, The University of Iowa

Prostate Cancer Mortality by County Group 1990-1998



¹Adjusted to Year 2000 US population

Lung & Bronchus Cancer Incidence 1990-1998

TOTAL	Number	Crude ¹	Adjusted ^{1,2}
State of Iowa	19,277	75.8	67.6

	County				County			
	Number	Crude ¹	Adjusted ^{1,2}		Number	Crude ¹	Adjusted ^{1,2}	
Counties with Average Population <10,000	Adair	61	81.8	52.1	Lucas	73	89.5	62.0
	Adams	36	87.5	58.8	Monroe	69	94.3	69.3
	Audubon	46	73.0	43.1	Osceola	41	63.8	49.1
	Clarke	42	56.5	44.0	Pocahontas	64	77.9	52.8
	Davis	60	79.4	63.5	Ringgold	53	109.8	63.7
	Decatur	60	81.5	59.7	Taylor	58	90.6	54.4
	Fremont	72	99.5	66.4	Van Buren	54	77.3	54.3
	Howard	58	65.8	41.4	Wayne	64	103.1	63.7
	Ida	55	74.6	59.5	Worth	63	89.1	63.7
	Group Totals							
Number:	1,029							
Crude:	82.2							
Adjusted:	56.4							

	County				County			
	Number	Crude	Adjusted		Number	Crude	Adjusted	
Counties with Average Population 10,000 to 20,000	Allamakee	97	77.0	58.8	Henry	133	75.1	65.6
	Appanoose	113.0	91.9	64.6	Humboldt	92	97.6	64.4
	Buena Vista	96	53.6	42.6	Iowa	88	65.0	51.2
	Butler	103	72.8	50.0	Jefferson	89	59.1	58.2
	Calhoun	100	96.6	61.9	Jones	137	76.2	64.2
	Cass	121	90.0	62.9	Keokuk	109	104.7	75.1
	Cedar	105	66.1	53.1	Kossuth	107	65.6	48.1
	Cherokee	90	72.9	54.0	Louisa	76	71.9	64.1
	Chickasaw	93	77.4	60.7	Lyon	80	74.4	57.7
	Clay	114	71.9	59.1	Madison	103	87.0	72.3
	Clayton	114	67.3	50.3	Mills	94	76.2	73.8
	Crawford	110	73.9	56.7	Mitchell	101	102.0	66.6
	Delaware	111	67.3	61.2	Monona	102	112.6	68.2
	Dickinson	144	103.1	67.7	Montgomery	101	94.0	66.2
	Emmet	83	81.8	60.8	O'Brien	87	63.4	45.8
	Floyd	133	88.5	65.8	Page	157	103.1	73.9
	Franklin	52	52.0	37.9	Palo Alto	88	94.7	62.2
	Greene	66	72.9	46.1	Poweshiek	100	58.7	47.3
	Grundy	65	59.5	40.7	Sac	74	68.1	43.5
	Guthrie	98	96.7	66.2	Shelby	77	65.2	44.7
Hamilton	138	95.4	72.4	Tama	119	75.1	57.2	
Hancock	66	60.0	47.3	Union	115	101.8	82.6	
Hardin	159	94.5	64.4	Winnebago	53	49.2	37.3	
Harrison	151	112.1	85.3	Wright	119	93.1	61.9	
Group Totals								
Number:	4,923							
Crude:	78.8							
Adjusted:	59.0							

	County				County			
	Number	Crude	Adjusted		Number	Crude	Adjusted	
Counties with Average Population >20,000	Benton	170	79.2	66.8	Mahaska	158	80.9	65.7
	Boone	202	87.8	69.7	Marion	207	75.0	65.4
	Bremer	131	62.9	52.7	Marshall	346	100.2	79.8
	Buchanan	146	76.9	68.7	Muscatine	256	69.7	69.6
	Carroll	144	74.3	59.4	Plymouth	127	58.5	48.4
	Cerro Gordo	405	96.6	76.0	Sioux	102	36.8	34.0
	Clinton	402	88.0	75.1	Story	265	39.6	52.3
	Des Moines	340	88.8	75.8	Wapello	312	97.1	75.2
	Fayette	159	80.6	61.6	Washington	98	53.5	43.4
	Jackson	159	88.0	72.1	Webster	338	95.0	76.3
	Jasper	309	97.3	80.0	Winneshek	100	53.1	46.2
	Lee	339	97.0	80.5				
	Group Totals							
Number:	5,215							
Crude:	77.4							
Adjusted:	67.0							

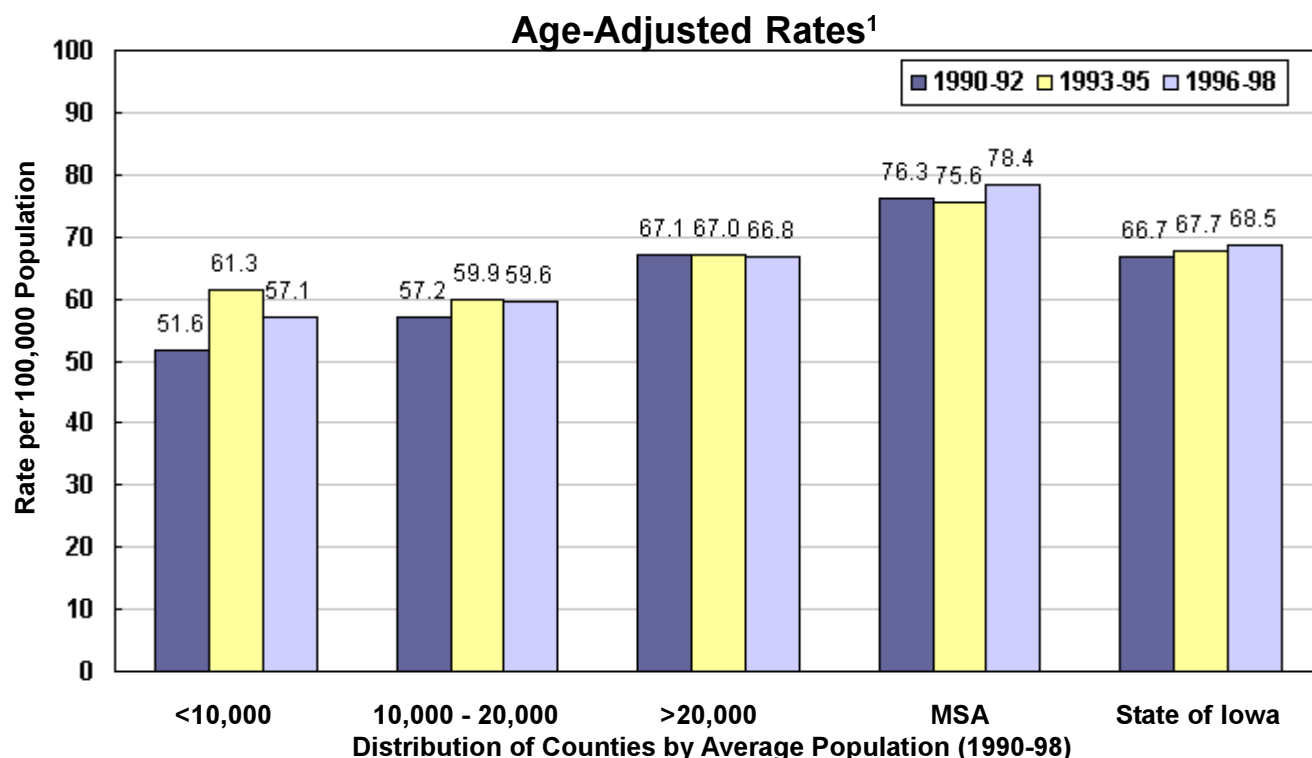
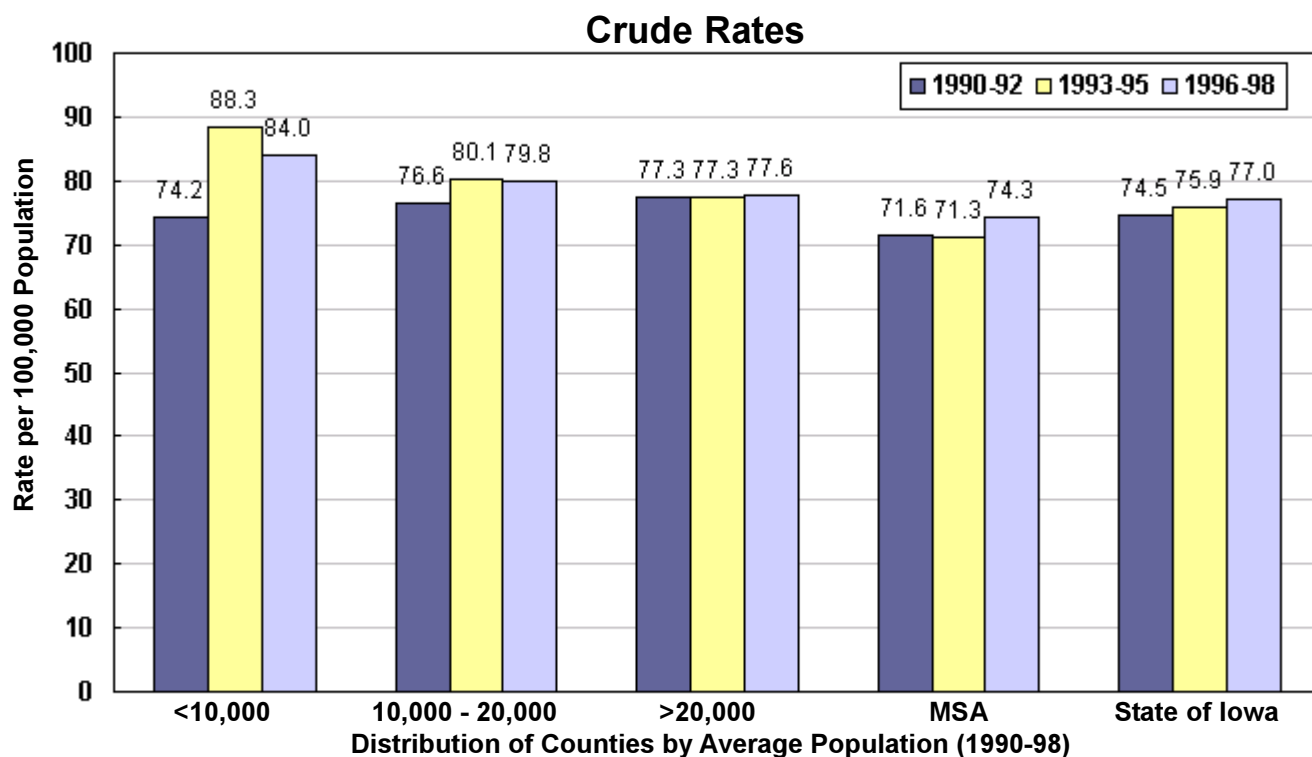
	County				County			
	Number	Crude	Adjusted		Number	Crude	Adjusted	
MSA Counties	Black Hawk	974	87.9	83.7	Polk	2280	73.3	81.3
	Dallas	190	64.2	62.3	Pottawattamie	680	90.0	84.0
	Dubuque	630	79.8	73.8	Scott	998	71.2	78.3
	Johnson	320	35.7	58.2	Warren	219	63.6	71.9
	Linn	1114	70.1	72.9	Woodbury	705	77.7	73.1
	Group Totals							
Number:	8,110							
Crude:	72.4							
Adjusted:	76.8							

¹Rates per 100,000 population

²Adjusted to Year 2000 US population

Source: Iowa Cancer Registry,
The University of Iowa

Lung & Bronchus Cancer Incidence by County Group 1990-1998



¹Adjusted to Year 2000 US population

Lung & Bronchus Cancer Mortality 1990-1998

TOTAL	Number	Crude ¹	Adjusted ^{1,2}
State of Iowa	15,294	60.1	53.2

	County				County				
	Number	Crude ¹	Adjusted ^{1,2}	Number	Crude ¹	Adjusted ^{1,2}	Number	Crude ¹	Adjusted ^{1,2}
Counties with Average Population <10,000	Adair	57	76.4	46.4	Lucas	61	74.8	53.3	
	Adams	29	70.5	45.4	Monroe	57	77.9	55.9	
	Audubon	38	60.3	36.9	Osceola	33	51.4	39.1	
	Clarke	46	61.9	46.8	Pocahontas	64	77.9	50.9	
	Davis	43	56.9	44.8	Ringgold	37	76.6	43.1	
	Decatur	45	61.1	44.0	Taylor	42	65.6	38.1	
	Fremont	63	87.0	56.7	Van Buren	40	57.3	41.1	
	Howard	41	46.5	27.0	Wayne	54	87.0	51.8	
	Ida	39	52.9	39.0	Worth	45	63.6	43.6	
	Group Totals								
Number:	834								
Crude:	66.6								
Adjusted:	44.7								

	County				County			
	Number	Crude	Adjusted	Number	Crude	Adjusted	Number	Crude
Counties with Average Population 10,000 to 20,000	Allamakee	72	57.2	43.1	Henry	124	70.0	59.9
	Appanoose	77	62.6	42.6	Humboldt	81	85.9	55.8
	Buena Vista	81	45.2	35.1	Iowa	64	47.3	36.5
	Butler	86	60.8	42.1	Jefferson	68	45.2	42.7
	Calhoun	81	78.2	49.3	Jones	98	54.5	45.0
	Cass	103	76.6	52.5	Keokuk	71	68.2	49.3
	Cedar	84	52.8	40.8	Kossuth	76	46.6	33.7
	Cherokee	58	47.0	34.0	Louisa	52	49.2	43.7
	Chickasaw	67	55.8	43.1	Lyon	69	64.2	48.5
	Clay	98	61.8	50.3	Madison	71	59.9	49.4
	Clayton	93	54.9	41.6	Mills	73	59.2	57.0
	Crawford	94	63.1	49.0	Mitchell	70	70.7	45.4
	Delaware	83	50.3	45.8	Monona	83	91.6	54.4
	Dickinson	108	77.3	51.7	Montgomery	91	84.7	60.9
	Emmet	57	56.2	41.0	O'Brien	71	51.7	34.8
	Floyd	113	75.2	55.2	Page	116	76.1	54.2
	Franklin	50	50.0	35.6	Palo Alto	61	65.6	44.1
	Greene	55	60.7	38.3	Poweshiek	91	53.4	42.5
	Grundy	52	47.6	32.4	Sac	58	53.4	33.4
	Guthrie	80	78.9	52.4	Shelby	58	49.1	34.1
Hamilton	110	76.1	57.1	Tama	94	59.3	44.5	
Hancock	60	54.5	44.7	Union	83	73.4	57.0	
Hardin	126	74.9	49.7	Winnebago	43	39.9	29.7	
Harrison	123	91.3	69.1	Wright	99	77.4	50.6	

	County				County			
	Number	Crude	Adjusted	Number	Crude	Adjusted	Number	Crude
Counties with Average Population >20,000	Benton	130	60.6	50.9	Mahaska	116	59.4	47.1
	Boone	156	67.8	52.2	Marion	162	58.7	51.0
	Bremer	104	49.9	40.8	Marshall	300	86.9	68.3
	Buchanan	120	63.2	55.3	Muscatine	202	55.0	54.5
	Carroll	105	54.2	43.0	Plymouth	105	48.4	39.7
	Cerro Gordo	345	82.3	64.5	Sioux	81	29.2	26.8
	Clinton	334	73.1	61.9	Story	213	31.8	41.7
	Des Moines	251	65.5	54.8	Wapello	256	79.6	60.9
	Fayette	139	70.4	52.9	Washington	78	42.6	33.6
	Jackson	127	70.3	57.0	Webster	269	75.6	60.5
	Jasper	251	79.1	64.5	Winneshek	82	43.5	37.4
	Lee	301	86.2	71.6				

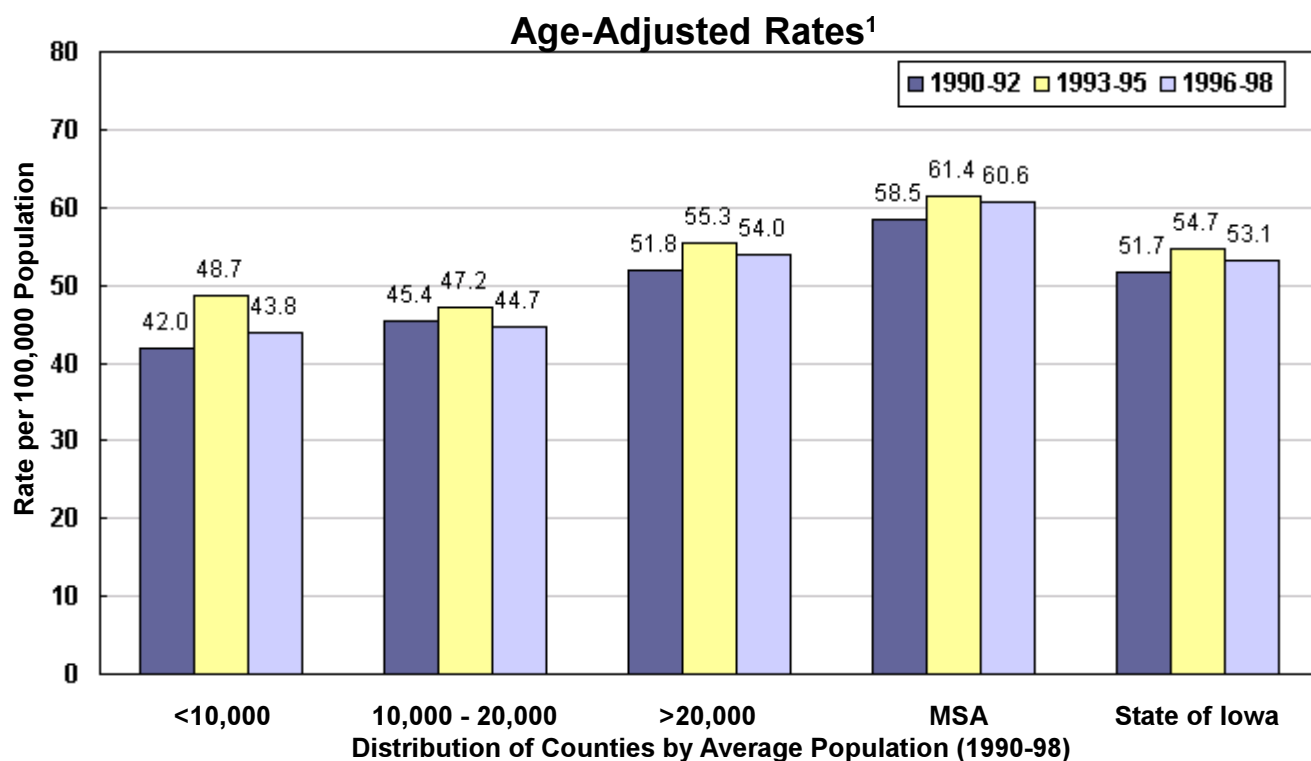
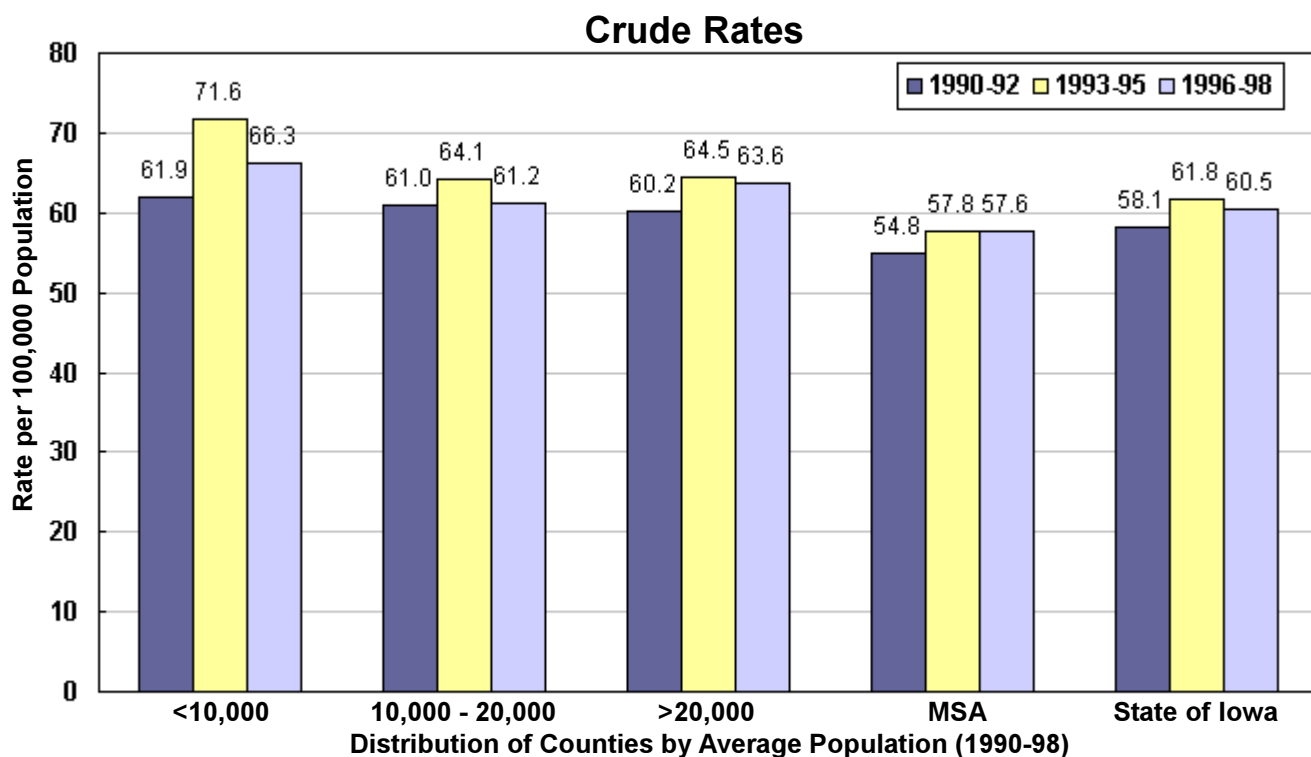
	County				County				
	Number	Crude	Adjusted	Number	Crude	Adjusted	Number	Crude	Adjusted
MSA Counties	Black Hawk	799	72.1	68.7	Polk	1,842	59.2	65.8	
	Dallas	157	53.0	50.8	Pottawattamie	516	68.3	64.0	
	Dubuque	503	63.7	58.6	Scott	750	53.5	58.9	
	Johnson	243	27.1	44.1	Warren	158	45.9	51.7	
	Linn	810	51.0	53.0	Woodbury	579	63.8	59.7	
	Group Totals								
Number:	6,357								
Crude:	56.8								
Adjusted:	60.2								

¹Rates per 100,000 population

²Adjusted to Year 2000 US population

Source: IDPH Vital Records via Iowa Cancer Registry, The University of Iowa

Lung & Bronchus Cancer Mortality by County Group 1990-1998



¹Adjusted to Year 2000 US population

Female Breast Cancer Incidence 1990-1998

TOTAL	Number	Crude ¹	Adjusted ^{1,2}
State of Iowa	19,219	147.0	128.7

County	Number	Crude ¹	Adjusted ^{1,2}	County	Number	Crude ¹	Adjusted ^{1,2}	
								Counties with Average Population <10,000
	Adams	39	186.4	119.3	Monroe	52	137.5	100.0
	Audubon	68	208.0	138.1	Osceola	55	167.1	113.8
	Clarke	54	139.1	111.0	Pocahontas	67	158.4	111.6
	Davis	63	163.4	120.0	Ringgold	46	181.7	106.0
<u>Group Totals</u>	Decatur	58	152.7	115.1	Taylor	70	208.7	154.3
Number: 1,058	Fremont	65	171.1	130.7	Van Buren	61	172.9	124.9
Crude: 163.5	Howard	68	151.0	110.7	Wayne	60	184.5	118.1
Adjusted: 115.0	Ida	76	199.9	138.1	Worth	53	145.7	104.6

County	Number	Crude	Adjusted	County	Number	Crude	Adjusted	
								Counties with Average Population 10,000 to 20,000
	Appanoose	86	134.0	100.3	Humboldt	81	167.3	117.2
	Buena Vista	145	157.8	125.1	Iowa	83	119.2	97.2
	Butler	133	184.4	126.8	Jefferson	110	143.0	125.5
	Calhoun	107	201.2	135.5	Jones	140	162.2	133.0
	Cass	144	205.0	135.1	Keokuk	79	148.2	111.0
	Cedar	106	130.4	96.7	Kossuth	129	154.5	116.1
<u>Group Totals</u>	Cherokee	128	200.3	145.0	Louisa	76	144.5	126.6
Number: 5,319	Chickasaw	82	135.9	114.8	Lyon	80	146.1	111.5
Crude: 166.1	Clay	140	169.1	143.4	Madison	93	153.8	127.5
Adjusted: 125.5	Clayton	170	197.9	158.0	Mills	106	170.3	158.5
	Crawford	127	166.9	138.7	Mitchell	80	157.3	112.2
	Delaware	104	124.3	110.3	Monona	69	145.5	100.4
	Dickinson	122	168.1	122.4	Montgomery	99	175.2	123.5
	Emmet	81	154.2	110.5	O'Brien	137	193.0	144.7
	Floyd	162	205.7	149.4	Page	157	204.0	148.7
	Franklin	106	205.6	144.9	Palo Alto	94	196.2	137.3
	Greene	86	182.1	124.5	Poweshiek	117	132.6	104.7
	Grundy	101	178.4	129.3	Sac	98	176.4	120.9
	Guthrie	82	155.9	106.9	Shelby	88	145.9	108.2
	Hamilton	123	165.3	121.0	Tama	138	169.2	125.7
	Hancock	106	188.5	138.6	Union	107	179.5	139.9
	Hardin	169	195.0	136.1	Winnebago	77	139.0	97.6
	Harrison	102	146.5	116.9	Wright	140	209.7	149.3

County	Number	Crude	Adjusted	County	Number	Crude	Adjusted	
								Counties with Average Population >20,000
	Boone	206	172.0	135.4	Marion	216	155.7	132.9
	Bremer	168	157.3	133.1	Marshall	263	149.4	122.8
	Buchanan	122	126.5	113.5	Muscatine	261	139.7	134.7
	Carroll	162	161.9	131.0	Plymouth	172	155.8	139.0
<u>Group Totals</u>	Cerro Gordo	394	178.6	142.5	Sioux	183	128.4	118.9
Number: 5,098	Clinton	386	162.8	137.1	Story	360	111.2	131.1
Crude: 148.1	Des Moines	287	143.7	114.4	Wapello	293	175.0	136.1
Adjusted: 126.6	Fayette	162	160.3	122.8	Washington	132	139.6	112.5
	Jackson	133	145.0	121.2	Webster	310	167.0	133.9
	Jasper	236	146.3	116.3	Winneshek	119	123.8	114.9
	Lee	252	142.1	115.3				

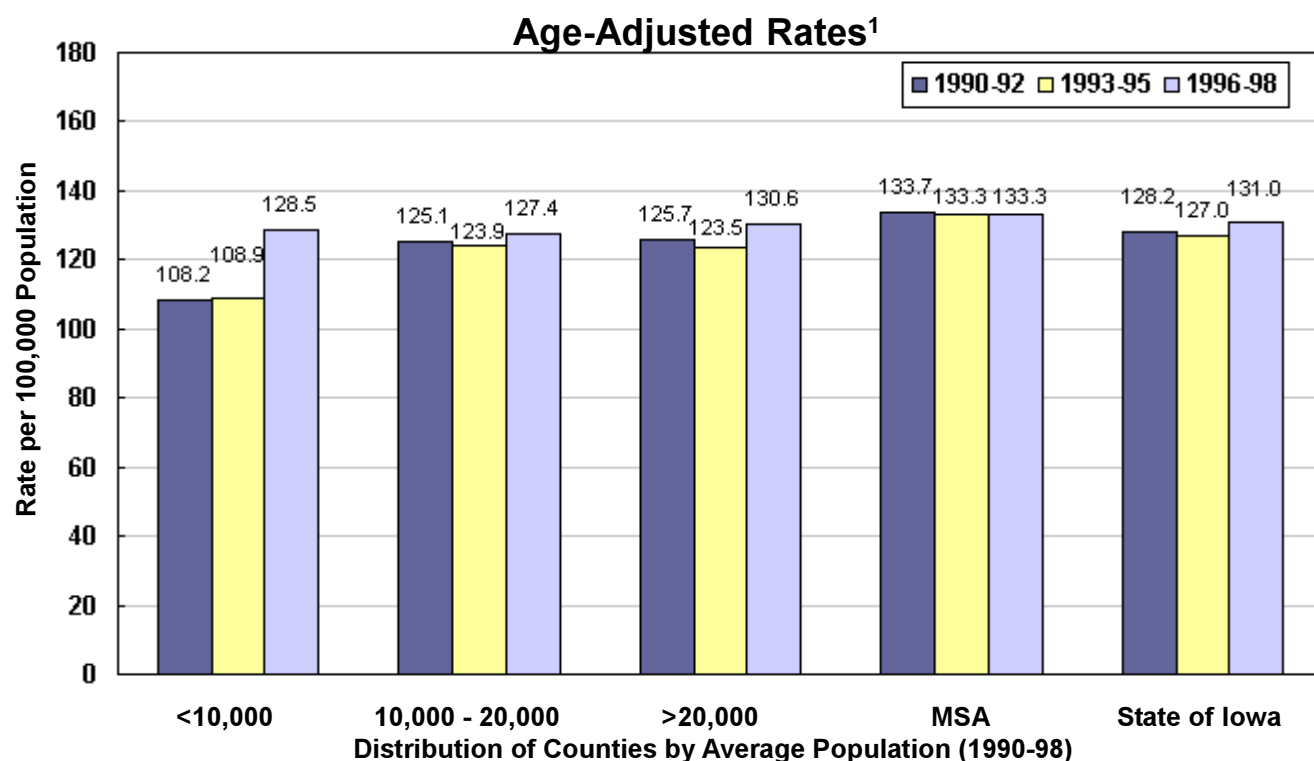
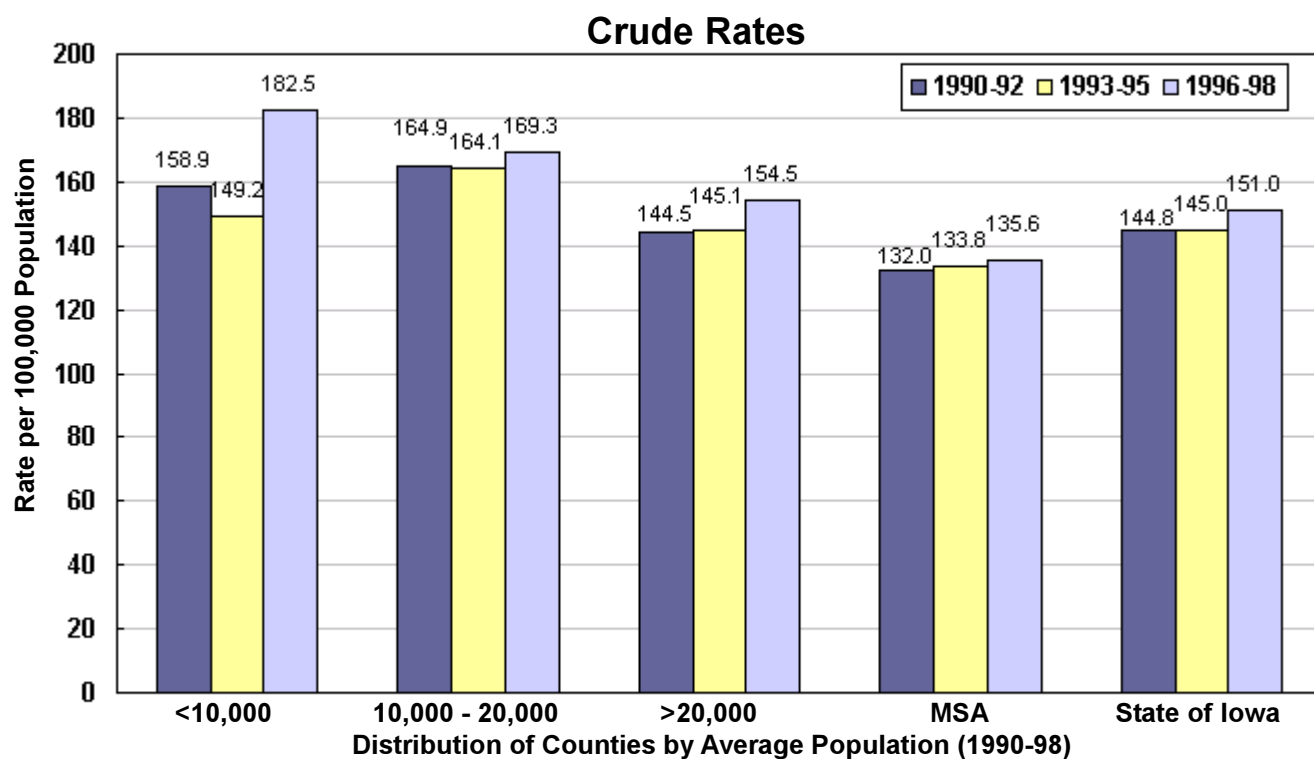
County	Number	Crude	Adjusted	County	Number	Crude	Adjusted	
								MSA Counties
	Dallas	221	146.7	136.2	Pottawattamie	523	133.4	122.7
<u>Group Totals</u>	Dubuque	624	153.3	138.9	Scott	953	132.1	135.2
Number: 7,744	Johnson	437	96.9	135.4	Warren	193	109.5	114.0
Crude: 133.8	Linn	1068	130.9	126.8	Woodbury	673	143.8	131.7
Adjusted: 133.4								

¹Rates per 100,000 population

²Adjusted to Year 2000 US population

Source: Iowa Cancer Registry, The University of Iowa

Female Breast Cancer Incidence by County Group 1990-1998



¹Adjusted to Year 2000 US population

Female Breast Cancer Mortality 1990-1998

TOTAL	Number	Crude ¹	Adjusted ^{1,2}
State of Iowa	4,761	36.4	29.7

	County				County				
	Number	Crude ¹	Adjusted ^{1,2}	Number	Crude ¹	Adjusted ^{1,2}	Number	Crude ¹	Adjusted ^{1,2}
Counties with Average Population <10,000	Adair	12	31.2	20.5	Lucas	10	23.5	15.6	
	Adams	8	38.2	23.7	Monroe	14	37.0	25.3	
	Audubon	9	27.5	14.7	Osceola	16	48.6	29.2	
	Clarke	19	48.9	35.7	Pocahontas	27	63.8	35.8	
	Davis	10	25.9	20.5	Ringgold	7	27.7	10.6	
	Decatur	19	50.0	36.2	Taylor	23	68.6	39.8	
	Fremont	17	44.7	37.1	Van Buren	17	48.2	33.6	
	Howard	25	55.5	37.1	Wayne	15	46.1	28.2	
	Ida	18	47.3	32.8	Worth	16	44.0	24.9	
	Group Totals								
Number:	282								
Crude:	43.6								
Adjusted:	28.0								

	County				County			
	Number	Crude	Adjusted	Number	Crude	Adjusted	Number	Crude
Counties with Average Population 10,000 to 20,000	Allamakee	31	48.5	30.6	Henry	28	32.0	26.6
	Appanoose	27	42.1	27.8	Humboldt	19	39.2	22.0
	Buena Vista	30	32.7	24.1	Iowa	23	33.0	28.2
	Butler	34	47.1	28.9	Jefferson	34	44.2	41.1
	Calhoun	28	52.6	28.8	Jones	30	34.8	24.4
	Cass	26	37.0	23.9	Keokuk	19	35.6	22.6
	Cedar	30	36.9	25.2	Kossuth	41	49.1	34.4
	Cherokee	33	51.6	34.4	Louisa	23	43.7	34.4
	Chickasaw	29	48.1	32.5	Lyon	25	45.7	32.3
	Clay	33	39.9	31.0	Madison	26	43.0	32.0
	Clayton	42	48.9	38.3	Mills	23	37.0	34.6
	Crawford	23	30.2	24.2	Mitchell	25	49.1	30.8
	Delaware	29	34.7	29.7	Monona	21	44.3	22.4
	Dickinson	40	55.1	34.3	Montgomery	19	33.6	22.2
	Emmet	26	49.5	29.8	O'Brien	36	50.7	33.4
	Floyd	40	50.8	37.6	Page	35	45.5	28.3
	Franklin	23	44.6	28.6	Palo Alto	26	54.3	35.8
	Greene	21	44.5	26.9	Poweshiek	23	26.1	19.5
	Grundy	30	53.0	35.0	Sac	26	46.8	30.0
	Guthrie	21	39.9	24.5	Shelby	15	24.9	17.5
Hamilton	27	36.3	22.0	Tama	44	53.9	40.1	
Hancock	15	26.7	23.2	Union	23	38.6	26.5	
Hardin	58	66.9	42.4	Winnebago	24	43.3	28.7	
Harrison	23	33.0	23.2	Wright	28	41.9	26.2	

	County				County			
	Number	Crude	Adjusted	Number	Crude	Adjusted	Number	Crude
Counties with Average Population >20,000	Benton	37	33.9	27.8	Mahaska	47	47.0	37.6
	Boone	39	32.6	22.8	Marion	47	33.9	27.1
	Bremer	44	41.2	32.3	Marshall	78	44.3	33.9
	Buchanan	51	52.9	44.1	Muscatine	66	35.3	33.1
	Carroll	57	57.0	44.7	Plymouth	51	46.2	36.2
	Cerro Gordo	109	49.4	38.1	Sioux	44	30.9	27.6
	Clinton	96	40.5	31.2	Story	95	29.4	32.3
	Des Moines	56	28.0	21.4	Wapello	83	49.6	36.0
	Fayette	41	40.6	29.6	Washington	34	36.0	26.6
	Jackson	24	26.2	19.2	Webster	71	38.2	30.1
	Jasper	61	37.8	28.4	Winneshek	37	38.5	29.8
	Lee	77	43.4	34.4				

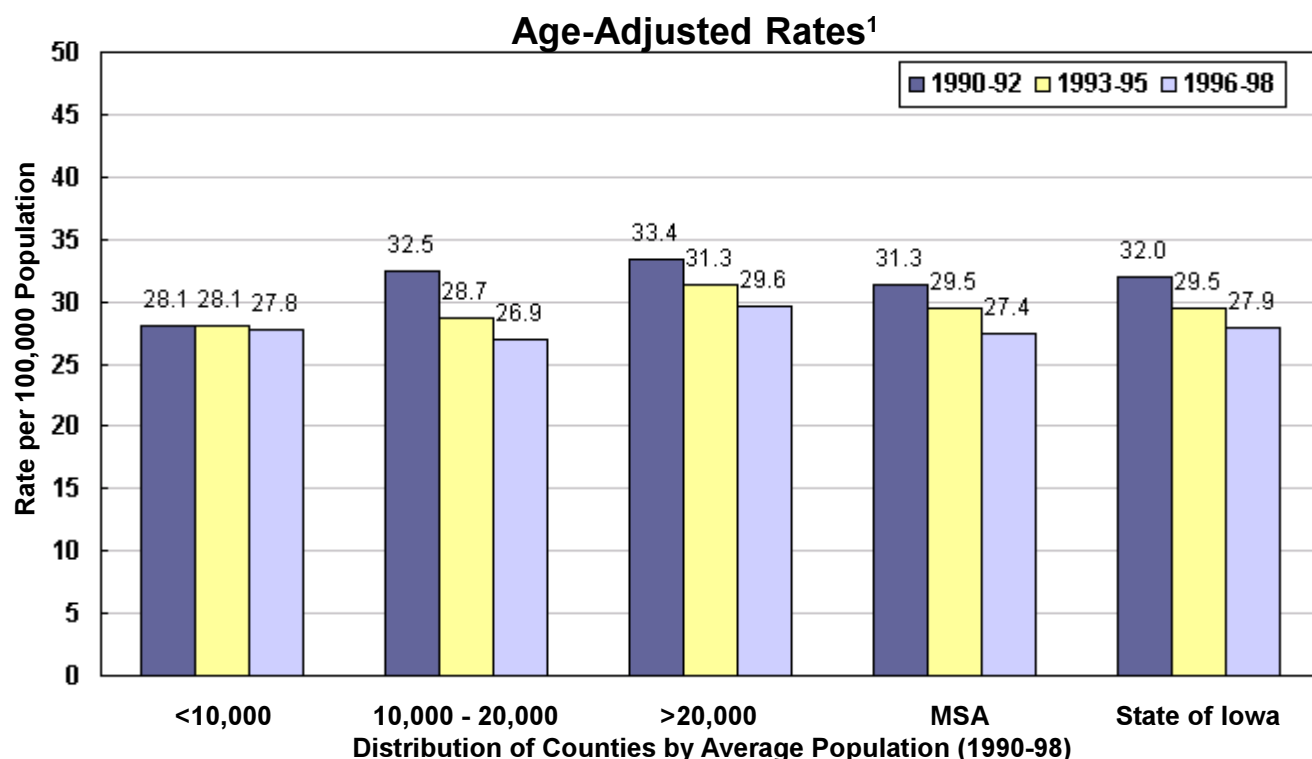
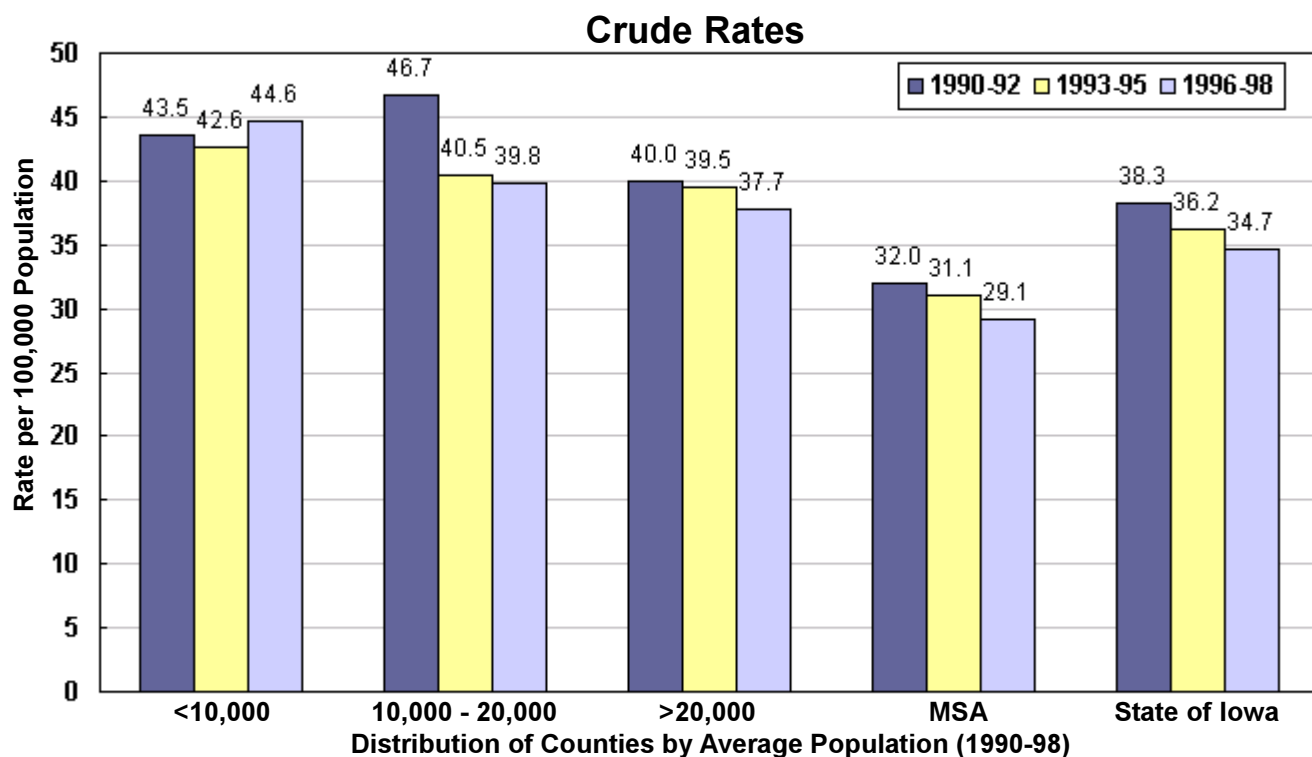
	County				County				
	Number	Crude	Adjusted	Number	Crude	Adjusted	Number	Crude	Adjusted
MSA Counties	Black Hawk	199	34.3	31.0	Polk	495	30.5	29.9	
	Dallas	49	32.5	28.8	Pottawattamie	134	34.2	29.9	
	Dubuque	163	40.1	33.3	Scott	204	28.3	28.2	
	Johnson	103	22.8	31.3	Warren	47	26.7	26.7	
	Linn	212	26.0	24.2	Woodbury	173	37.0	29.9	
	Group Totals								
Number:	1,779								
Crude:	30.7								
Adjusted:	29.3								

¹Rates per 100,000 population

²Adjusted to Year 2000 US population

Source: IDPH Vital Records via Iowa Cancer Registry, The University of Iowa

Female Breast Cancer Mortality by County Group 1990-1998



¹Adjusted to Year 2000 US population

Colorectal Cancer Incidence 1990-1998

TOTAL	Number	Crude ¹	Adjusted ^{1,2}
State of Iowa	18,740	73.7	64.1

	Counties with Average Population <10,000				Counties with Average Population 10,000 to 20,000			
	County	Number	Crude ¹	Adjusted ^{1,2}	County	Number	Crude ¹	Adjusted ^{1,2}
Counties with Average Population <10,000	Adair	65	87.2	50.4	Lucas	72	88.3	58.3
	Adams	37	90.0	53.9	Monroe	65	88.8	59.1
	Audubon	55	87.3	52.3	Osceola	66	102.8	67.1
	Clarke	50	67.3	47.6	Pocahontas	93	113.2	72.8
	Davis	68	90.0	62.7	Ringgold	46	95.3	57.6
	Decatur	72	97.8	70.9	Taylor	85	132.8	76.9
	Fremont	81	111.9	77.0	Van Buren	63	90.2	63.5
	Howard	95	107.9	70.8	Wayne	59	95.1	50.9
	Ida	75	101.7	69.3	Worth	49	69.3	48.3
Group Totals								
Number:	1,196							
Crude:	95.5							
Adjusted:	62.1							

	Counties with Average Population >20,000				MSA Counties			
	County	Number	Crude	Adjusted	County	Number	Crude	Adjusted
Counties with Average Population >20,000	Allamakee	119	94.5	66.9	Henry	120	72.8	59.8
	Appanoose	140	113.8	76.1	Humboldt	106	112.4	72.4
	Buena Vista	186	103.9	77.6	Iowa	107	79.0	59.5
	Butler	116	82.0	54.3	Jefferson	127	84.4	81.4
	Calhoun	105	101.4	63.7	Jones	144	80.1	67.4
	Cass	124	92.2	57.4	Keokuk	113	108.5	71.6
	Cedar	98	61.6	47.2	Kossuth	144	88.3	63.4
	Cherokee	102	82.6	57.2	Louisa	83	78.5	69.3
	Chickasaw	90	74.9	58.9	Lyon	91	84.6	62.2
	Clay	139	87.7	67.9	Madison	77	65.0	52.1
	Clayton	156	92.1	68.9	Mills	87	70.5	67.7
	Crawford	129	86.7	66.9	Mitchell	79	79.8	52.2
	Delaware	107	64.9	58.4	Monona	126	139.1	78.9
	Dickinson	123	88.0	57.8	Montgomery	107	99.6	59.7
	Emmet	96	94.6	64.6	O'Brien	163	118.8	78.8
	Floyd	133	88.5	61.9	Page	133	87.3	58.7
	Franklin	90	90.1	63.3	Palo Alto	109	117.3	75.2
	Greene	96	106.0	61.7	Poweshiek	147	86.3	67.3
	Grundy	81	74.1	51.9	Sac	113	104.0	66.0
	Guthrie	108	106.5	71.1	Shelby	113	95.7	64.1
	Hamilton	121	83.7	61.0	Tama	144	90.9	61.3
	Hancock	84	76.4	56.2	Union	96	84.9	61.1
	Hardin	185	109.9	68.7	Winnebago	73	67.8	52.6
	Harrison	146	108.4	78.6	Wright	155	121.2	76.8
Group Totals								
Number:	5,640							
Crude:	90.3							
Adjusted:	64.5							

	Counties with Average Population >20,000				MSA Counties			
	County	Number	Crude	Adjusted	County	Number	Crude	Adjusted
Counties with Average Population >20,000	Benton	176	82.0	68.6	Mahaska	156	79.9	63.8
	Boone	199	86.5	66.3	Marion	187	67.8	56.7
	Bremer	162	77.8	64.6	Marshall	272	78.8	61.3
	Buchanan	129	68.0	60.4	Muscatine	258	70.3	68.6
	Carroll	203	104.7	78.7	Plymouth	211	97.2	79.7
	Cerro Gordo	342	81.6	62.6	Sioux	195	70.3	64.6
	Clinton	371	81.2	67.7	Story	289	43.1	55.4
	Des Moines	355	92.7	77.2	Wapello	277	86.2	65.4
	Fayette	164	83.1	62.0	Washington	168	91.7	69.7
	Jackson	177	97.9	79.6	Webster	360	101.2	77.0
	Jasper	255	80.3	66.7	Winneshek	124	65.8	58.0
	Lee	295	84.4	69.6				
Group Totals								
Number:	5,325							
Crude:	79.0							
Adjusted:	66.8							

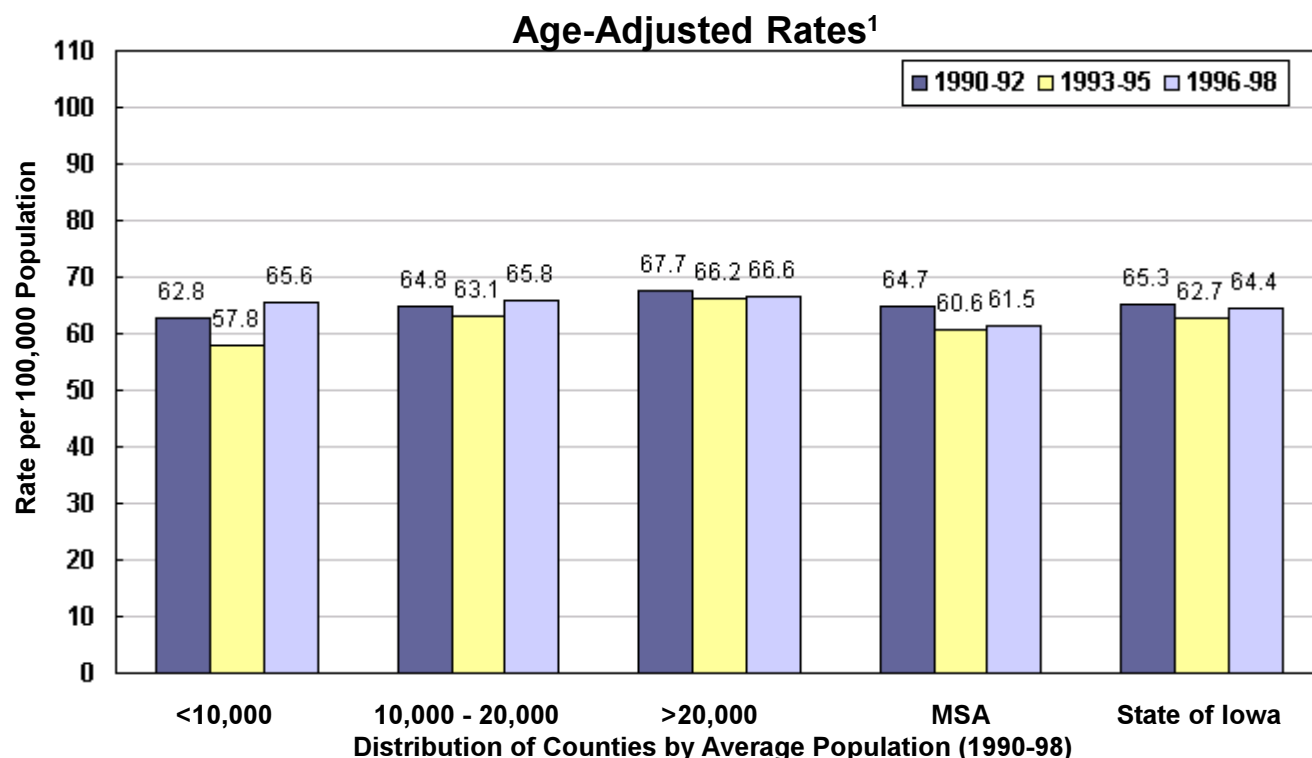
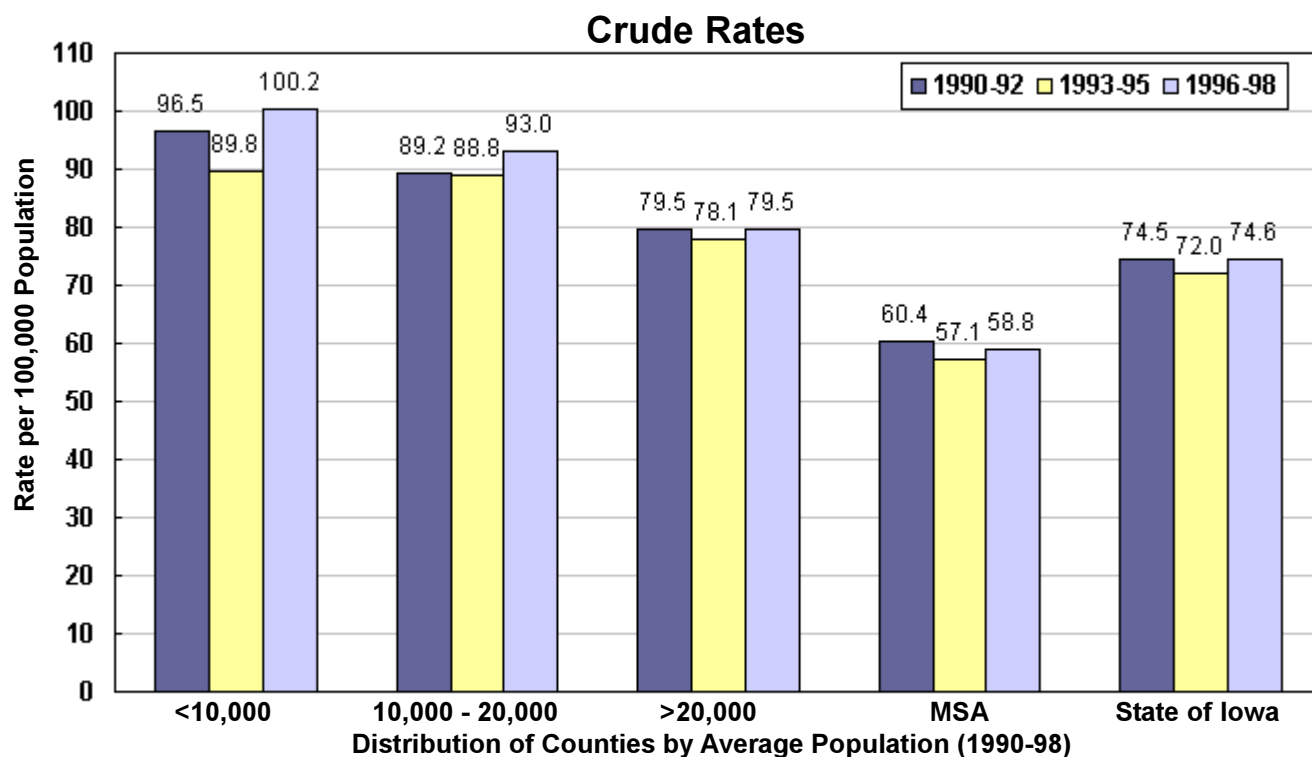
	MSA Counties				MSA Counties			
	County	Number	Crude	Adjusted	County	Number	Crude	Adjusted
MSA Counties	Black Hawk	720	65.0	61.5	Polk	1665	53.5	59.6
	Dallas	178	60.1	56.8	Pottawattamie	510	67.5	63.9
	Dubuque	562	71.2	65.9	Scott	862	61.5	68.4
	Johnson	282	31.4	50.3	Warren	195	56.6	64.1
	Linn	986	62.1	64.5	Woodbury	619	68.2	63.2
Group Totals								
Number:	6,579							
Crude:	58.8							
Adjusted:	62.2							

¹Rates per 100,000 population

²Adjusted to Year 2000 US population

Source: Iowa Cancer Registry,
The University of Iowa

Colorectal Cancer Incidence by County Group 1990-1998



¹Adjusted to Year 2000 US population

Colorectal Cancer Mortality 1990-1998

TOTAL	Number	Crude ¹	Adjusted ^{1,2}
State of Iowa	7,188	28.3	24.1

	County				County				
	Number	Crude ¹	Adjusted ^{1,2}	Number	Crude ¹	Adjusted ^{1,2}	Number	Crude ¹	Adjusted ^{1,2}
Counties with Average Population <10,000	Adair	34	45.6	26.0	Lucas	33	40.5	25.4	
	Adams	16	38.9	22.9	Monroe	30	41.0	26.1	
	Audubon	20	31.7	20.0	Osceola	20	31.1	18.4	
	Clarke	20	26.9	17.3	Pocahontas	40	48.7	28.9	
	Davis	28	37.1	25.9	Ringgold	18	37.3	18.3	
	Decatur	36	48.9	33.7	Taylor	36	56.3	31.5	
	Fremont	33	45.6	30.7	Van Buren	31	44.4	30.5	
	Howard	38	43.1	27.0	Wayne	30	48.3	24.6	
	Ida	30	40.7	24.1	Worth	26	36.8	22.4	
	Group Totals								
Number:	519								
Crude:	41.4								
Adjusted:	25.5								

	County				County			
	Number	Crude	Adjusted	Number	Crude	Adjusted	Number	Crude
Counties with Average Population 10,000 to 20,000	Allamakee	48	38.1	25.7	Henry	50	28.2	22.4
	Appanoose	48	39.0	24.7	Humboldt	28	29.7	18.9
	Buena Vista	77	43.0	31.1	Iowa	55	40.6	28.4
	Butler	53	37.4	24.1	Jefferson	37	24.6	22.7
	Calhoun	42	40.6	24.7	Jones	45	25.0	20.6
	Cass	55	40.9	25.4	Keokuk	39	37.5	24.4
	Cedar	42	26.4	19.6	Kossuth	49	30.1	20.7
	Cherokee	37	30.0	20.3	Louisa	33	31.2	28.0
	Chickasaw	37	30.8	23.2	Lyon	34	31.6	22.8
	Clay	53	33.4	25.0	Madison	35	29.5	23.2
	Clayton	69	40.7	28.7	Mills	31	25.1	23.5
	Crawford	59	39.6	29.1	Mitchell	29	29.3	19.5
	Delaware	60	36.4	33.1	Monona	53	58.5	30.2
	Dickinson	45	32.2	21.5	Montgomery	34	31.6	18.4
	Emmet	28	27.6	18.5	O'Brien	63	45.9	29.1
	Floyd	49	32.6	22.8	Page	46	30.2	19.9
	Franklin	38	38.0	25.3	Palo Alto	41	44.1	26.4
	Greene	47	51.9	29.6	Poweshiek	68	39.9	29.3
	Grundy	23	21.1	14.0	Sac	52	47.9	28.9
	Guthrie	44	43.4	28.0	Shelby	45	38.1	24.1
Hamilton	51	35.3	25.9	Tama	60	37.9	24.0	
Hancock	27	24.5	18.3	Union	42	37.2	26.5	
Hardin	71	42.2	23.8	Winnebago	28	26.0	17.7	
Harrison	55	40.8	28.0	Wright	50	39.1	25.3	

	County				County			
	Number	Crude	Adjusted	Number	Crude	Adjusted	Number	Crude
Counties with Average Population >20,000	Benton	66	30.7	25.5	Mahaska	53	27.2	21.9
	Boone	82	35.6	26.4	Marion	78	28.3	22.9
	Bremer	63	30.3	24.2	Marshall	117	33.9	26.2
	Buchanan	58	30.6	27.5	Muscatine	86	23.4	22.3
	Carroll	71	36.6	26.5	Plymouth	72	33.2	27.8
	Cerro Gordo	126	30.1	22.7	Sioux	78	28.1	24.7
	Clinton	143	31.3	26.1	Story	112	16.7	21.0
	Des Moines	134	35.0	29.1	Wapello	120	37.3	27.2
	Fayette	71	36.0	27.4	Washington	68	37.1	26.2
	Jackson	55	30.4	23.8	Webster	88	24.7	17.9
	Jasper	89	28.0	22.9	Winneshek	49	26.0	21.7
	Lee	134	38.4	31.0				

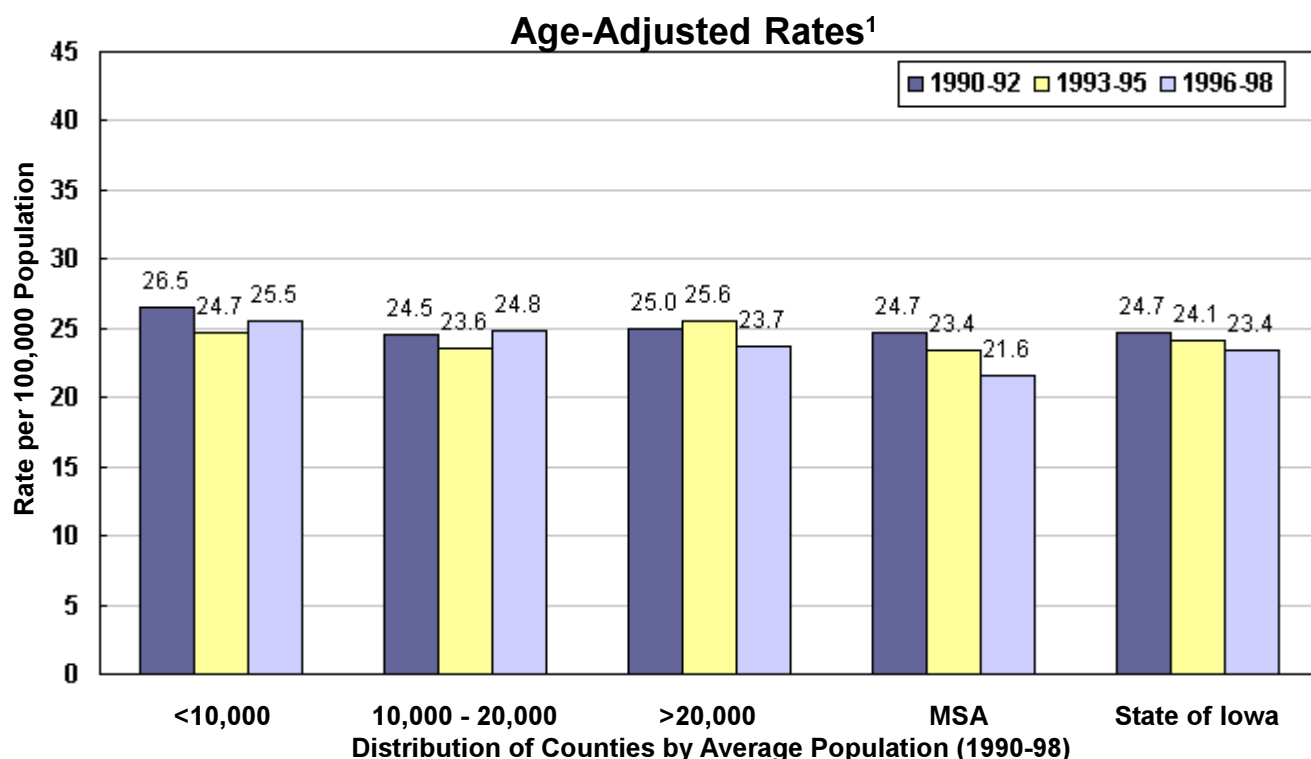
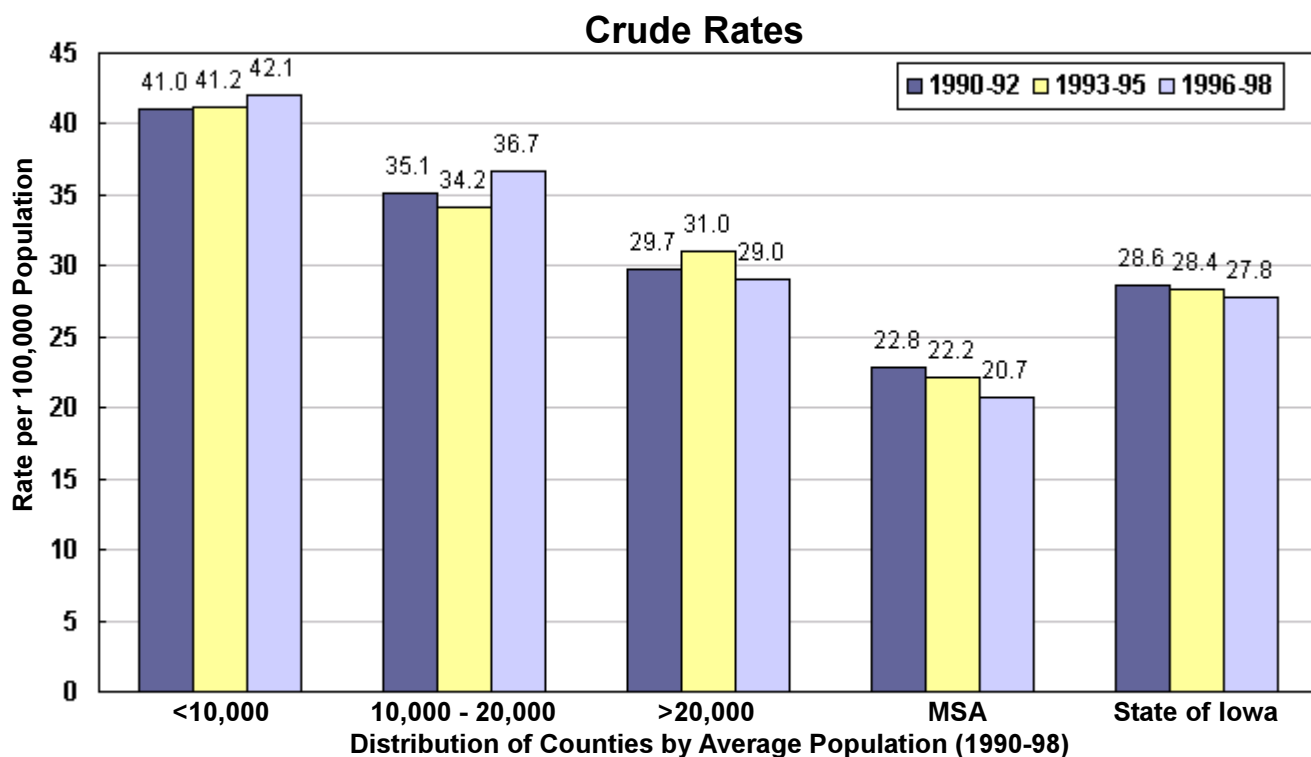
	County				County				
	Number	Crude	Adjusted	Number	Crude	Adjusted	Number	Crude	Adjusted
MSA Counties	Black Hawk	264	23.8	22.7	Polk	602	19.4	21.6	
	Dallas	84	28.4	26.1	Pottawattamie	162	21.4	20.4	
	Dubuque	218	27.6	25.0	Scott	324	23.1	25.9	
	Johnson	111	12.4	19.9	Warren	73	21.2	23.8	
	Linn	399	25.1	26.1	Woodbury	214	23.6	21.4	
	Group Totals								
Number:	2,451								
Crude:	21.9								
Adjusted:	23.2								

¹Rates per 100,000 population

²Adjusted to Year 2000 US population

Source: IDPH Vital Records via Iowa Cancer Registry, The University of Iowa

Colorectal Cancer Mortality by County Group 1990-1998



¹Adjusted to Year 2000 US population

Non-Hodgkin's Lymphoma Incidence 1990-1998

TOTAL	Number	Crude ¹	Adjusted ^{1,2}
State of Iowa	5,309	20.9	19.0

	County				County			
	Number	Crude ¹	Adjusted ^{1,2}		Number	Crude ¹	Adjusted ^{1,2}	
Counties with Average Population <10,000	Adair	19	25.5	18.6	Lucas	18	22.1	17.3
	Adams	7	17.0	12.0	Monroe	19	26.0	18.8
	Audubon	9	14.3	10.5	Osceola	18	28.0	21.3
	Clarke	20	26.9	21.7	Pocahontas	25	30.4	22.2
	Davis	16	21.2	16.0	Ringgold	16	33.1	19.8
	Decatur	25	33.9	24.4	Taylor	17	26.6	15.1
	Fremont	15	20.7	16.2	Van Buren	13	18.6	16.3
	Howard	20	22.7	18.4	Wayne	20	32.2	24.7
	Ida	22	29.8	19.0	Worth	19	26.9	21.4
	Group Totals							
Number:	318							
Crude:	25.4							
Adjusted:	18.7							

	County				County			
	Number	Crude	Adjusted		Number	Crude	Adjusted	
Counties with Average Population 10,000 to 20,000	Allamakee	28	22.2	17.1	Henry	30	16.9	15.9
	Appanoose	36	29.3	19.0	Humboldt	26	27.6	18.7
	Buena Vista	44	24.6	20.8	Iowa	36	26.6	21.4
	Butler	37	26.1	19.2	Jefferson	34	22.6	22.0
	Calhoun	29	28.0	17.9	Jones	45	25.0	22.8
	Cass	28	20.8	15.5	Keokuk	23	22.1	14.4
	Cedar	31	19.5	16.0	Kossuth	42	25.8	20.3
	Cherokee	27	21.9	16.4	Louisa	19	18.0	16.9
	Chickasaw	30	25.0	20.1	Lyon	30	27.9	21.5
	Clay	30	18.9	16.6	Madison	15	12.7	10.4
	Clayton	35	20.7	16.7	Mills	18	14.6	14.2
	Crawford	26	17.5	14.0	Mitchell	32	32.3	23.2
	Delaware	23	13.9	13.1	Monona	29	32.0	20.7
	Dickinson	42	30.1	22.0	Montgomery	32	29.8	19.0
	Emmet	27	26.6	19.5	O'Brien	37	27.0	18.8
	Floyd	48	31.9	22.9	Page	29	19.0	13.3
	Franklin	25	25.0	17.1	Palo Alto	26	28.0	20.6
	Greene	26	28.7	18.2	Poweshiek	46	27.0	22.4
	Grundy	27	24.7	17.8	Sac	13	12.0	7.6
	Guthrie	21	20.7	15.2	Shelby	31	26.2	17.4
Hamilton	41	28.3	23.3	Tama	44	27.8	21.5	
Hancock	21	19.1	14.6	Union	32	28.3	22.8	
Hardin	43	25.6	17.7	Winnebago	29	26.9	22.4	
Harrison	29	21.5	16.6	Wright	25	19.6	13.3	
Group Totals								
Number:	1,477							
Crude:	23.7							
Adjusted:	18.1							

	County				County			
	Number	Crude	Adjusted		Number	Crude	Adjusted	
Counties with Average Population >20,000	Benton	50	23.3	20.5	Mahaska	37	19.0	16.6
	Boone	43	18.7	16.3	Marion	60	21.7	20.0
	Bremer	38	18.2	15.4	Marshall	78	22.6	18.8
	Buchanan	40	21.1	19.4	Muscatine	76	20.7	20.9
	Carroll	69	35.6	29.3	Plymouth	47	21.6	18.0
	Cerro Gordo	86	20.5	17.7	Sioux	52	18.7	17.7
	Clinton	107	23.4	20.4	Story	90	13.4	16.8
	Des Moines	89	23.2	20.4	Wapello	85	26.4	20.9
	Fayette	50	25.3	19.5	Washington	38	20.7	17.6
	Jackson	35	19.4	15.7	Webster	73	20.5	17.3
	Jasper	71	22.4	19.1	Winneshek	24	12.7	11.6
	Lee	91	26.0	22.4				
	Group Totals							
Number:	1,429							
Crude:	21.2							
Adjusted:	18.9							

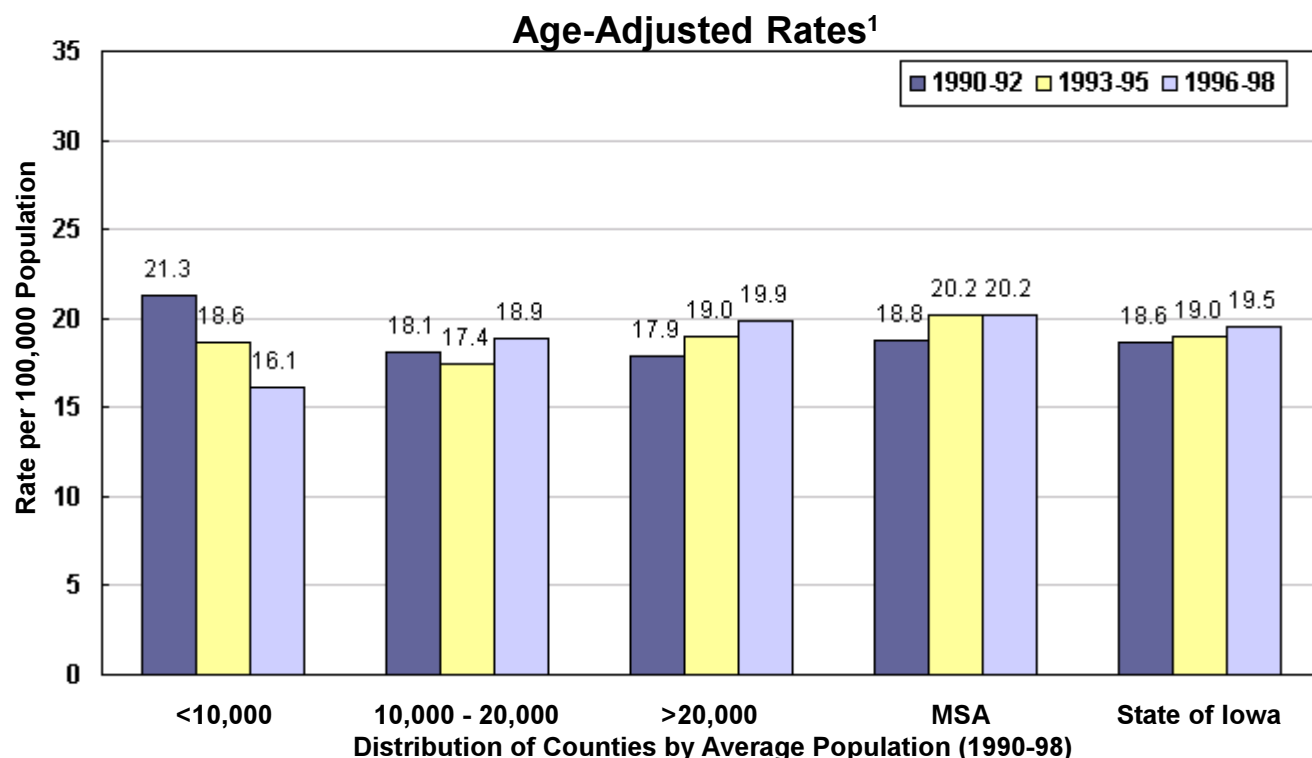
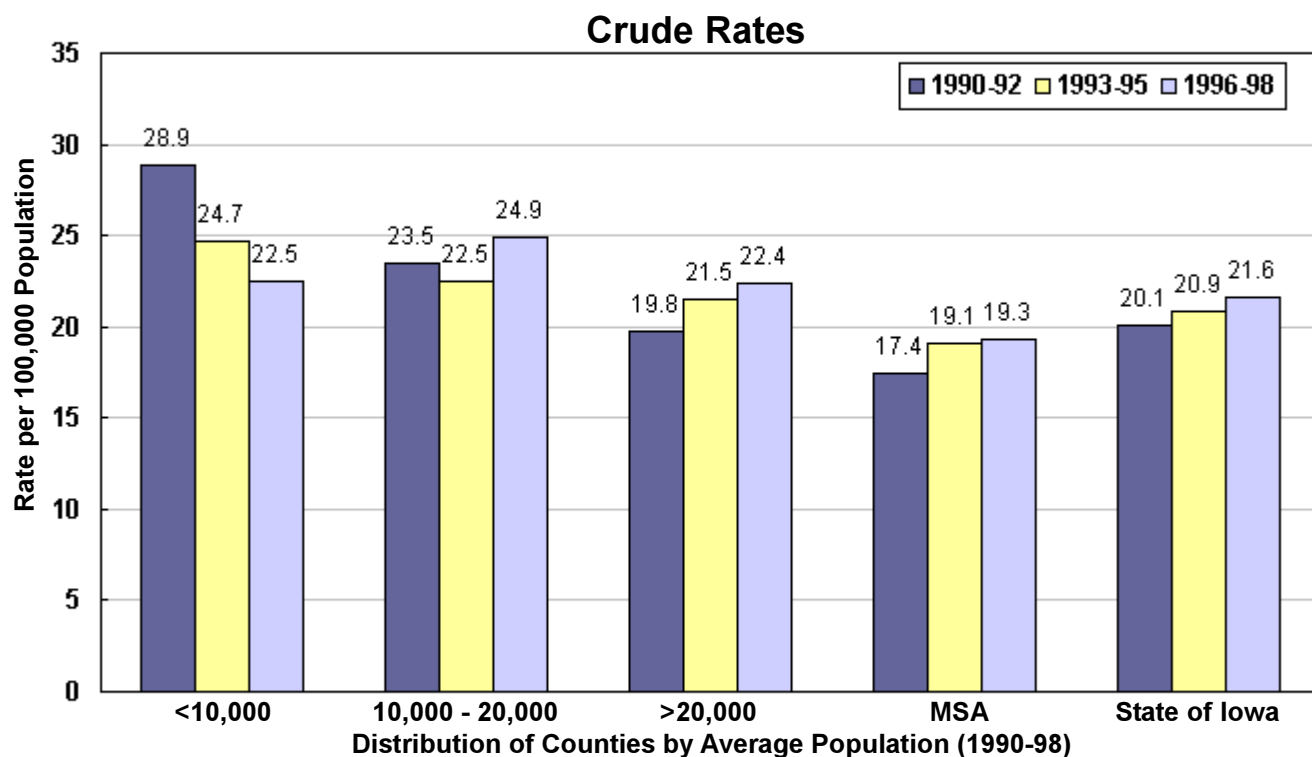
	County				County			
	Number	Crude	Adjusted		Number	Crude	Adjusted	
MSA Counties	Black Hawk	218	19.7	19.0	Polk	575	18.5	20.3
	Dallas	61	20.6	20.0	Pottawattamie	141	18.7	18.1
	Dubuque	191	24.2	22.7	Scott	241	17.2	18.9
	Johnson	124	13.8	20.1	Warren	54	15.7	17.2
	Linn	299	18.8	19.6	Woodbury	181	19.9	19.3
	Group Totals							
Number:	2,085							
Crude:	18.6							
Adjusted:	19.7							

¹Rates per 100,000 population

²Adjusted to Year 2000 US population

Source: Iowa Cancer Registry,
The University of Iowa

Non-Hodgkin's Lymphoma Incidence by County Group 1990-1998



¹Adjusted to Year 2000 US population

Non-Hodgkin's Lymphoma Mortality 1990-1998

TOTAL	Number	Crude ¹	Adjusted ^{1,2}
State of Iowa	2,738	10.8	9.3

	County				County			
	Number	Crude ¹	Adjusted ^{1,2}		Number	Crude ¹	Adjusted ^{1,2}	
Counties with Average Population <10,000	Adair	12	16.1	8.9	Lucas	10	12.3	8.1
	Adams	5	12.2	8.6	Monroe	7	9.6	5.7
	Audubon	3	4.8	2.6	Osceola	8	12.5	8.0
	Clarke	16	21.5	16.7	Pocahontas	15	18.3	11.8
	Davis	10	13.2	9.5	Ringgold	10	20.7	11.0
	Decatur	14	19.0	14.3	Taylor	6	9.4	4.5
	Fremont	12	16.6	13.6	Van Buren	4	5.7	4.8
	Howard	10	11.4	8.8	Wayne	7	11.3	6.6
	Ida	11	14.9	9.7	Worth	12	17.0	13.8
	Group Totals							
Number:	172							
Crude:	13.7							
Adjusted:	9.4							

	County				County			
	Number	Crude	Adjusted		Number	Crude	Adjusted	
Counties with Average Population 10,000 to 20,000	Allamakee	16	12.7	9.3	Henry	16	9.0	7.6
	Appanoose	18	14.6	9.2	Humboldt	18	19.1	12.1
	Buena Vista	23	12.8	10.4	Iowa	24	17.7	12.7
	Butler	13	9.2	6.7	Jefferson	22	14.6	13.7
	Calhoun	17	16.4	11.9	Jones	18	10.0	8.5
	Cass	13	9.7	6.4	Keokuk	13	12.5	8.0
	Cedar	18	11.3	8.8	Kossuth	22	13.5	10.1
	Cherokee	15	12.1	8.6	Louisa	8	7.6	6.3
	Chickasaw	15	12.5	9.3	Lyon	13	12.1	9.1
	Clay	20	12.6	10.1	Madison	15	12.7	11.4
	Clayton	18	10.6	8.2	Mills	11	8.9	8.5
	Crawford	13	8.7	6.9	Mitchell	17	17.2	9.9
	Delaware	18	10.9	9.5	Monona	12	13.2	6.7
	Dickinson	19	13.6	9.7	Montgomery	25	23.3	13.4
	Emmet	20	19.7	14.1	O'Brien	15	10.9	7.2
	Floyd	32	21.3	14.6	Page	20	13.1	8.4
	Franklin	8	8.0	4.9	Palo Alto	19	20.4	11.7
	Greene	14	15.5	10.4	Poweshiek	24	14.1	10.7
	Grundy	15	13.7	9.1	Sac	12	11.0	7.4
	Guthrie	11	10.8	7.8	Shelby	6	5.1	3.1
Hamilton	19	13.1	10.0	Tama	21	13.3	9.3	
Hancock	19	17.3	12.6	Union	13	11.5	7.9	
Hardin	25	14.9	9.0	Winnebago	13	12.1	9.0	
Harrison	14	10.4	6.6	Wright	18	14.1	8.9	

	County				County			
	Number	Crude	Adjusted		Number	Crude	Adjusted	
Counties with Average Population >20,000	Benton	31	14.4	11.9	Mahaska	21	10.8	9.1
	Boone	21	9.1	6.6	Marion	30	10.9	9.1
	Bremer	26	12.5	10.2	Marshall	41	11.9	9.1
	Buchanan	30	15.8	14.1	Muscatine	32	8.7	8.5
	Carroll	23	11.9	8.7	Plymouth	22	10.1	7.7
	Cerro Gordo	51	12.2	9.7	Sioux	30	10.8	9.4
	Clinton	63	13.8	11.7	Story	43	6.4	7.9
	Des Moines	54	14.1	11.6	Wapello	42	13.1	9.6
	Fayette	23	11.7	8.2	Washington	21	11.5	9.4
	Jackson	19	10.5	8.1	Webster	49	13.8	10.7
	Jasper	35	11.0	9.3	Winneshek	15	8.0	6.6
	Lee	52	14.9	12.7				

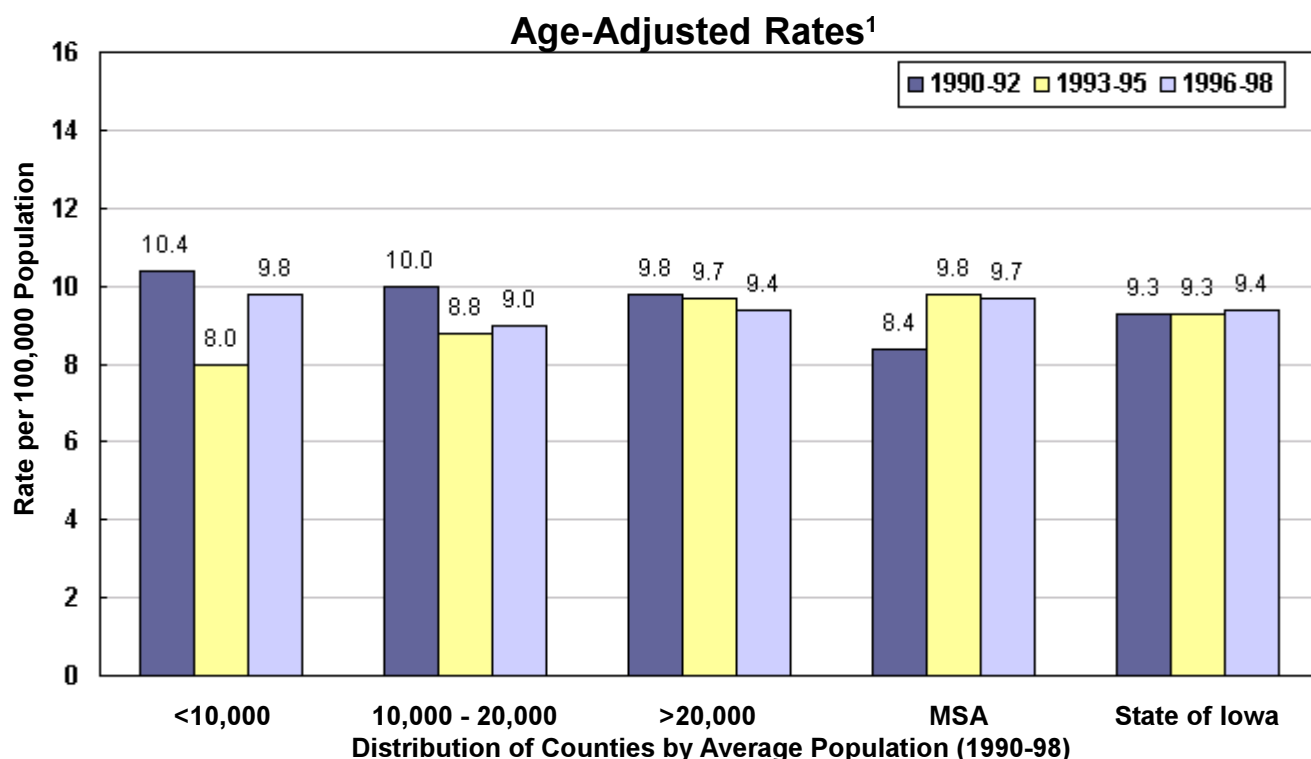
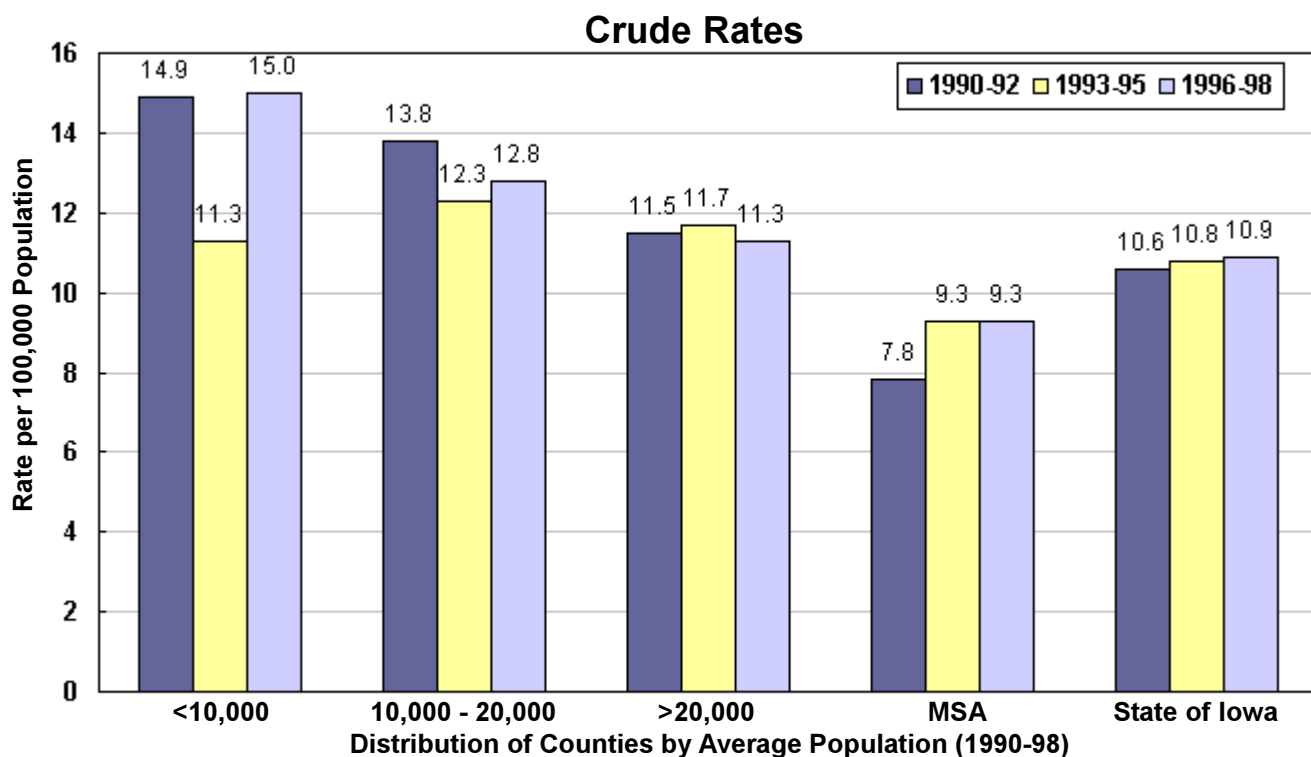
	County				County			
	Number	Crude	Adjusted		Number	Crude	Adjusted	
MSA Counties	Black Hawk	104	9.4	8.8	Polk	293	9.4	10.5
	Dallas	27	9.1	8.8	Pottawattamie	66	8.7	8.4
	Dubuque	82	10.4	9.4	Scott	114	8.1	9.1
	Johnson	48	5.3	8.3	Warren	21	6.1	6.6
	Linn	139	8.8	9.1	Woodbury	90	9.9	9.2
	Group Totals							
Number:	984							
Crude:	8.8							
Adjusted:	9.3							

¹Rates per 100,000 population

²Adjusted to Year 2000 US population

Source: IDPH Vital Records via Iowa Cancer Registry, The University of Iowa

Non-Hodgkin's Lymphoma Mortality by County Group 1990-1998



¹Adjusted to Year 2000 US population

Leukemia Incidence 1990-1998

TOTAL	Number	Crude ¹	Adjusted ^{1,2}
State of Iowa	4,159	16.4	14.7

	County				County							
	Number	Crude ¹	Adjusted ^{1,2}	Number	Crude ¹	Adjusted ^{1,2}	Number	Crude ¹	Adjusted ^{1,2}			
Counties with Average Population <10,000	Adair	13	17.4	11.6	Lucas	20	24.5	18.0	Monroe	15	20.5	16.1
	Adams	3	7.3	5.1	Osceola	13	20.2	16.0	Pocahontas	20	24.3	17.4
	Audubon	17	27.0	14.0	Ringgold	7	14.5	7.8	Taylor	10	15.6	9.6
	Clarke	14	18.8	15.3	Van Buren	14	20.0	13.4	Wayne	15	24.2	16.2
	Davis	14	18.5	14.8	Worth	10	14.1	10.9				
	Decatur	10	13.6	9.1								
	Fremont	17	23.5	16.4								
	Howard	16	18.2	11.2								
	Ida	8	10.8	9.7								
	Group Totals											
Number:	236											
Crude:	18.8											
Adjusted:	13.1											

	County				County							
	Number	Crude	Adjusted	Number	Crude	Adjusted	Number	Crude	Adjusted			
Counties with Average Population 10,000 to 20,000	Allamakee	24	19.1	13.2	Henry	32	18.1	15.6	Humboldt	22	23.3	16.7
	Appanoose	17	13.8	9.7	Iowa	27	19.9	15.4	Jefferson	24	15.9	14.7
	Buena Vista	43	24.0	21.3	Jones	25	13.9	11.7	Keokuk	30	28.8	20.1
	Butler	37	26.1	20.0	Kossuth	33	20.2	15.9	Louisa	15	14.2	12.1
	Calhoun	23.0	22.2	14.0	Lyon	12	11.2	8.3	Madison	20	16.9	14.6
	Cass	24	17.8	11.2	Mills	17	13.8	14.1	Mitchell	19	19.2	15.0
	Cedar	30	18.9	15.2	Monona	26	28.7	22.0	Montgomery	21	19.5	12.4
	Cherokee	17	13.8	10.5	O'Brien	33	24.1	16.5	O'Brien	33	24.1	16.5
	Chickasaw	17	14.1	10.5	Page	18	11.8	8.1	Palo Alto	20	21.5	16.0
	Clay	24	15.1	12.3	Poweshiek	35	20.6	16.2	Sac	19	17.5	11.8
	Clayton	27	15.9	12.9	Sac	19	17.5	11.8	Shelby	19	16.1	12.1
	Crawford	27	18.1	14.4	Shelby	19	16.1	12.1	Tama	33	20.8	15.9
	Delaware	19	11.5	10.8	Tama	33	20.8	15.9	Union	16	14.2	11.8
	Dickinson	30	21.5	14.3	Union	16	14.2	11.8	Winnebago	21	19.5	15.2
	Emmet	16	15.8	12.1	Winnebago	21	19.5	15.2	Wright	33	25.8	17.8
	Floyd	27	18.0	13.3	Wright	33	25.8	17.8				
	Franklin	16	16.0	12.5								
	Greene	21	23.2	13.7								
	Grundy	28	25.6	20.3								
	Guthrie	19	18.7	12.5								
Hamilton	38	26.3	19.9									
Hancock	22	20.0	15.0									
Hardin	37	22.0	16.0									
Harrison	24	17.8	11.7									

	County				County							
	Number	Crude	Adjusted	Number	Crude	Adjusted	Number	Crude	Adjusted			
Counties with Average Population >20,000	Benton	49	22.8	19.0	Mahaska	32	16.4	13.7	Marion	67	24.3	21.0
	Boone	53	23.0	18.0	Marshall	71	20.6	16.8	Muscatine	51	13.9	13.9
	Bremer	29	13.9	11.8	Plymouth	36	16.6	13.8	Sioux	44	15.9	14.5
	Buchanan	36	19.0	17.5	Sioux	44	15.9	14.5	Story	86	12.8	15.9
	Carroll	34	17.5	14.5	Story	86	12.8	15.9	Wapello	67	20.8	15.7
	Cerro Gordo	76	18.1	14.8	Wapello	67	20.8	15.7	Washington	50	27.3	21.1
	Clinton	72	15.8	13.7	Washington	50	27.3	21.1	Webster	72	20.2	16.9
	Des Moines	75	19.6	16.5	Webster	72	20.2	16.9	Winneschik	32	17.0	15.1
	Fayette	57	28.9	22.7	Winneschik	32	17.0	15.1				
	Jackson	42	23.2	18.7								
	Jasper	60	18.9	15.9								
	Lee	57	16.3	13.8								

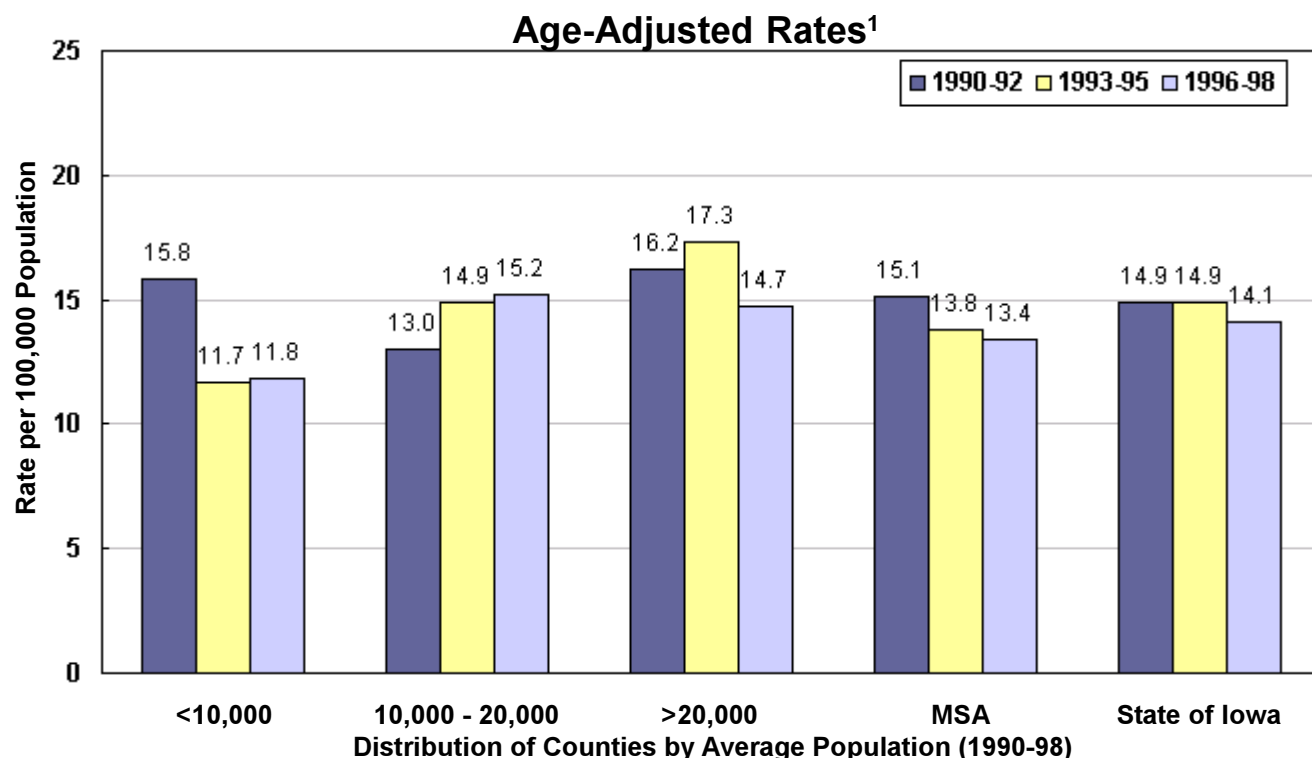
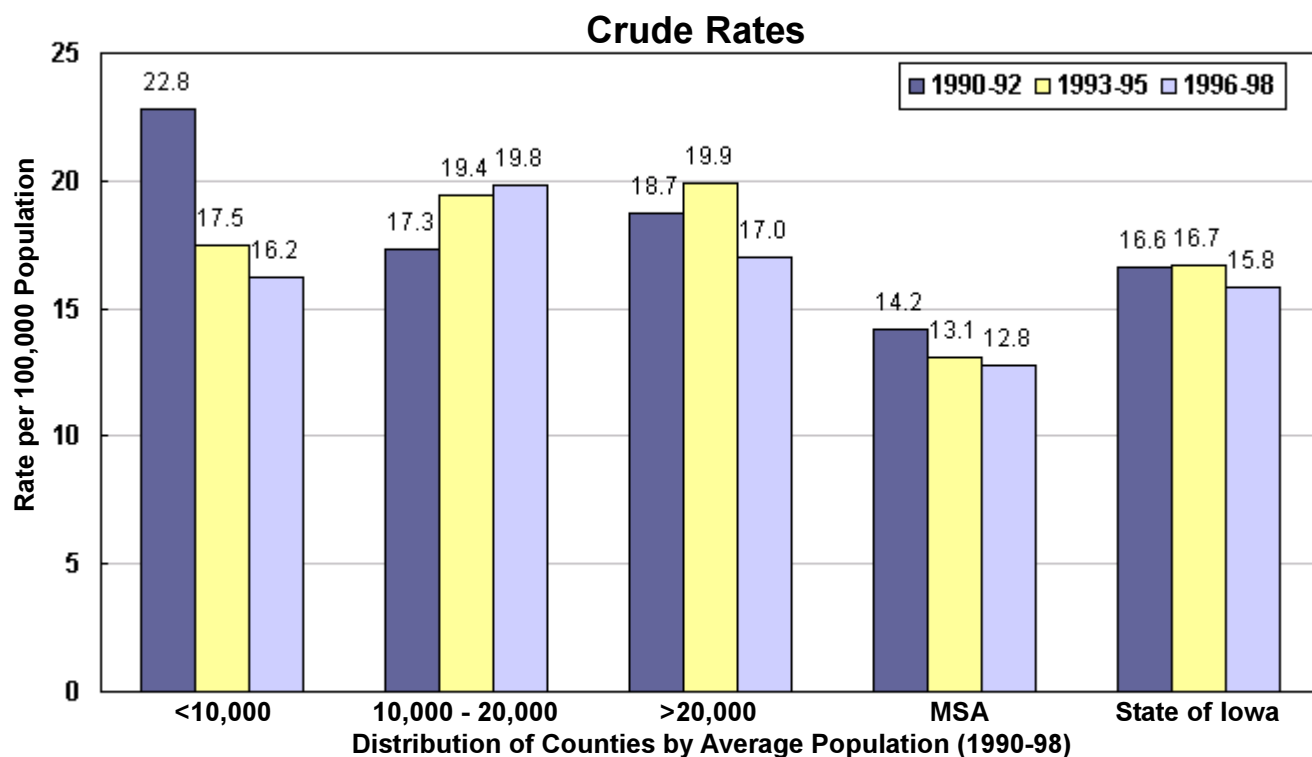
	County				County							
	Number	Crude	Adjusted	Number	Crude	Adjusted	Number	Crude	Adjusted			
MSA Counties	Black Hawk	149	13.4	12.9	Polk	432	13.9	15.2	Pottawattamie	123	16.3	15.7
	Dallas	45	15.2	14.5	Scott	162	11.6	12.6	Warren	51	14.8	16.0
	Dubuque	103	13.0	12.4	Warren	51	14.8	16.0	Woodbury	160	17.6	16.4
	Johnson	97	10.8	16.2	Woodbury	160	17.6	16.4				
	Linn	176	11.1	11.5								
	Group Totals											
Number:	1,498											
Crude:	13.4											
Adjusted:	14.1											

¹Rates per 100,000 population

²Adjusted to Year 2000 US population

Source: Iowa Cancer Registry, The University of Iowa

Leukemia Incidence by County Group 1990-1998



¹Adjusted to Year 2000 US population

Leukemia Mortality 1990-1998

TOTAL	Number	Crude ¹	Adjusted ^{1,2}
State of Iowa	2,413	9.5	8.2

	County				County			
	Number	Crude ¹	Adjusted ^{1,2}		Number	Crude ¹	Adjusted ^{1,2}	
Counties with Average Population <10,000	Adair	12	16.1	9.6	Lucas	15	18.4	12.5
	Adams	*	*	*	Monroe	9	12.3	9.9
	Audubon	12	19.0	10.3	Osceola	8	12.5	9.3
	Clarke	14	18.8	14.6	Pocahontas	11	13.4	8.0
	Davis	9	11.9	8.5	Ringgold	*	*	*
	Decatur	5	6.8	4.6	Taylor	7	10.9	5.6
	Fremont	16	22.1	16.8	Van Buren	6	8.6	6.9
	Howard	10	11.4	6.9	Wayne	9	14.5	9.4
	Ida	4	5.4	3.2	Worth	10	14.1	11.7
	Group Totals							
Number:	160							
Crude:	12.8							
Adjusted:	8.6							

	County				County			
	Number	Crude	Adjusted		Number	Crude	Adjusted	
Counties with Average Population 10,000 to 20,000	Allamakee	13	10.3	6.6	Henry	17	9.6	8.0
	Appanoose	7	5.7	3.8	Humboldt	14	14.8	10.1
	Buena Vista	17	9.5	7.9	Iowa	14	10.3	7.0
	Butler	26	18.4	13.3	Jefferson	11	7.3	6.3
	Calhoun	11	10.6	6.2	Jones	13	7.2	6.1
	Cass	21	15.6	9.4	Keokuk	12	11.5	7.3
	Cedar	18	11.3	8.7	Kossuth	27	16.6	12.7
	Cherokee	9	7.3	5.4	Louisa	10	9.5	8.2
	Chickasaw	10	8.3	5.8	Lyon	17	15.8	11.3
	Clay	12	7.6	5.6	Madison	16	13.5	10.6
	Clayton	20	11.8	8.8	Mills	7	5.7	5.3
	Crawford	16	10.7	9.2	Mitchell	13	13.1	8.2
	Delaware	11	6.7	6.2	Monona	11	12.1	7.5
	Dickinson	20	14.3	10.4	Montgomery	19	17.7	10.4
	Emmet	11	10.8	7.6	O'Brien	24	17.5	10.8
	Floyd	15	10.0	6.7	Page	14	9.2	6.3
	Franklin	16	16.0	11.5	Palo Alto	7	7.5	4.8
	Greene	14	15.5	8.3	Poweshiek	21	12.3	9.3
	Grundy	15	13.7	9.8	Sac	10	9.2	5.2
	Guthrie	9	8.9	6.0	Shelby	15	12.7	9.9
Hamilton	22	15.2	10.9	Tama	16	10.1	7.2	
Hancock	13	11.8	8.8	Union	11	9.7	7.8	
Hardin	28	16.6	12.4	Winnebago	10	9.3	7.5	
Harrison	15	11.1	7.1	Wright	17	13.3	7.8	
Group Totals								
Number:	715							
Crude:	11.4							
Adjusted:	8.2							

	County				County			
	Number	Crude	Adjusted		Number	Crude	Adjusted	
Counties with Average Population >20,000	Benton	26	12.1	10.1	Mahaska	13	6.7	5.2
	Boone	31	13.5	10.2	Marion	41	14.9	12.7
	Bremer	15	7.2	5.5	Marshall	25	7.2	5.5
	Buchanan	24	12.6	11.4	Muscatine	27	7.4	7.3
	Carroll	17	8.8	6.6	Plymouth	22	10.1	8.2
	Cerro Gordo	46	11.0	8.3	Sioux	26	9.4	8.5
	Clinton	47	10.3	9.1	Story	49	7.3	9.2
	Des Moines	47	12.3	9.9	Wapello	45	14.0	10.6
	Fayette	20	10.1	7.9	Washington	19	10.4	7.6
	Jackson	23	12.7	10.3	Webster	35	9.8	7.5
	Jasper	35	11.0	8.7	Winneshek	13	6.9	6.0
	Lee	34	9.7	8.2				
	Group Totals							
	Number:	680						
Crude:	10.1							
Adjusted:	8.5							

	County				County			
	Number	Crude	Adjusted		Number	Crude	Adjusted	
MSA Counties	Black Hawk	88	7.9	7.5	Polk	223	7.2	8.0
	Dallas	22	7.4	7.2	Pottawattamie	77	10.2	9.9
	Dubuque	68	8.6	7.9	Scott	80	5.7	6.3
	Johnson	67	7.5	10.9	Warren	30	8.7	9.6
	Linn	121	7.6	7.9	Woodbury	82	9.0	8.3
	Group Totals							
Number:	858							
Crude:	7.7							
Adjusted:	8.1							

¹Rates per 100,000 population

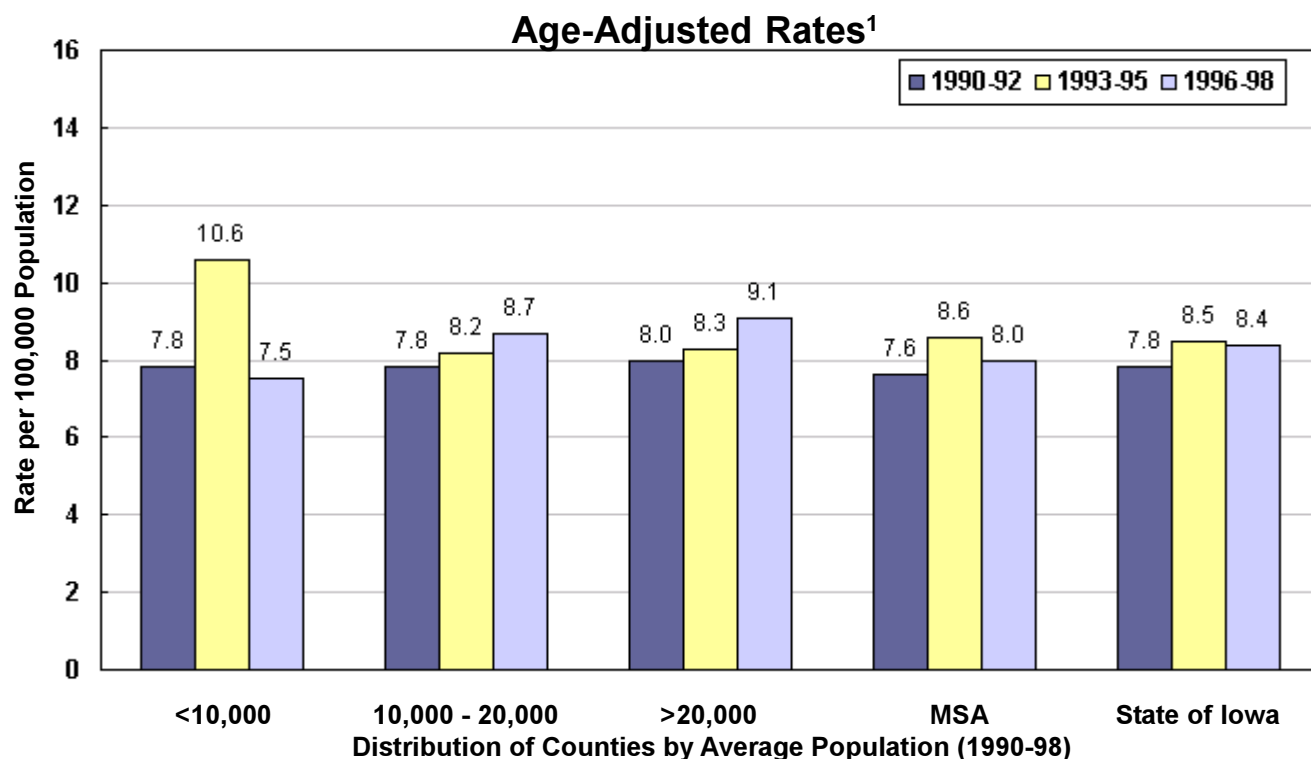
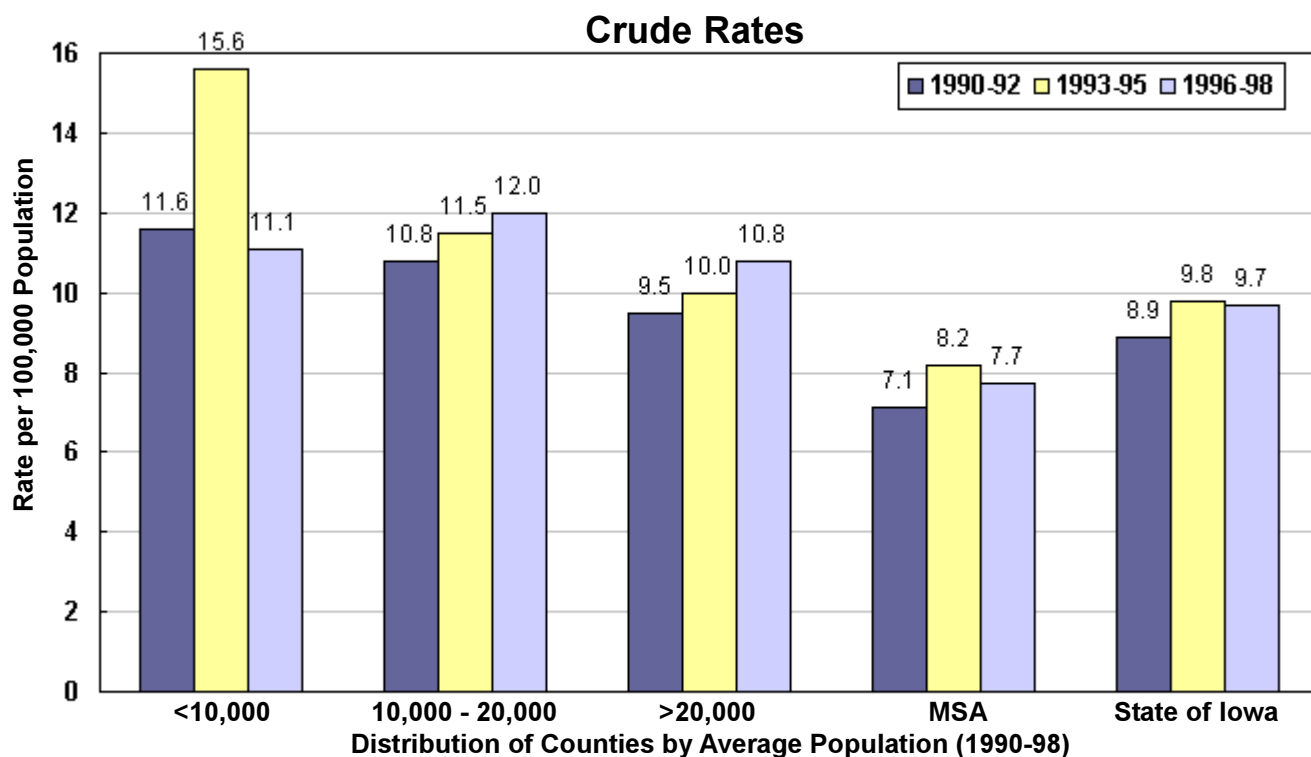
^{*}Number of events is less than 3

Source: IDPH Vital Records via

Iowa Cancer Registry, The University of Iowa

²Adjusted to Year 2000 US population

Leukemia Mortality by County Group 1990-1998



¹Adjusted to Year 2000 US population

Skin Melanoma Incidence 1990-1998

TOTAL	Number	Crude ¹	Adjusted ^{1,2}
State of Iowa	3,648	14.3	13.9

	County				County			
	Number	Crude ¹	Adjusted ^{1,2}		Number	Crude ¹	Adjusted ^{1,2}	
Counties with Average Population <10,000	Adair	6	8.0	7.1	Lucas	14	17.2	16.0
	Adams	6	14.6	9.7	Monroe	11	15.0	11.6
	Audubon	8	12.7	7.7	Osceola	5	7.8	5.6
	Clarke	12	16.1	11.5	Pocahontas	7	8.5	5.1
	Davis	13	17.2	15.4	Ringgold	9	18.6	13.3
	Decatur	17	23.1	21.7	Taylor	10	15.6	11.4
	Fremont	6	8.3	5.9	Van Buren	10	14.3	13.0
	Howard	12	13.6	12.8	Wayne	5	8.1	4.4
	Ida	12	16.3	11.9	Worth	12	17.0	10.7
	Group Totals							
Number:	175							
Crude:	14.0							
Adjusted:	10.8							

	County				County			
	Number	Crude	Adjusted		Number	Crude	Adjusted	
Counties with Average Population 10,000 to 20,000	Allamakee	20	15.9	14.0	Henry	24	13.5	12.8
	Appanoose	22	17.9	13.3	Humboldt	13	13.8	10.2
	Buena Vista	12	6.7	7.4	Iowa	15	11.1	10.0
	Butler	20	14.1	12.6	Jefferson	24	15.9	15.0
	Calhoun	14	13.5	11.3	Jones	44	24.5	22.7
	Cass	16	11.9	9.1	Keokuk	13	12.5	10.3
	Cedar	27	17.0	15.4	Kossuth	19	11.7	10.8
	Cherokee	23	18.6	15.8	Louisa	19	18.0	17.3
	Chickasaw	14	11.7	10.9	Lyon	13	12.1	11.1
	Clay	15	9.5	8.9	Madison	14	11.8	10.8
	Clayton	27	15.9	13.8	Mills	16	13.0	13.3
	Crawford	15	10.1	8.6	Mitchell	18	18.2	12.8
	Delaware	20	12.1	12.6	Monona	14	15.5	12.3
	Dickinson	27	19.3	16.9	Montgomery	15	14.0	11.7
	Emmet	10	9.9	7.8	O'Brien	21	15.3	12.0
	Floyd	19	12.6	10.9	Page	22	14.4	12.1
	Franklin	12	12.0	11.2	Palo Alto	14	15.1	12.5
	Greene	15	16.6	12.9	Poweshiek	27	15.9	15.7
	Grundy	21	19.2	16.3	Sac	22	20.3	14.8
	Guthrie	19	18.7	14.8	Shelby	17	14.4	12.5
Hamilton	20	13.8	12.1	Tama	25	15.8	13.4	
Hancock	7	6.4	5.3	Union	21	18.6	17.0	
Hardin	27	16.0	13.5	Winnebago	19	17.6	17.0	
Harrison	15	11.1	10.3	Wright	24	18.8	13.4	

	County				County			
	Number	Crude	Adjusted		Number	Crude	Adjusted	
Counties with Average Population >20,000	Benton	25	11.6	10.4	Mahaska	19	9.7	9.1
	Boone	39	17.0	15.7	Marion	30	10.9	10.1
	Bremer	35	16.8	16.5	Marshall	61	17.7	16.1
	Buchanan	32	16.9	17.8	Muscatine	52	14.2	14.7
	Carroll	25	12.9	12.1	Plymouth	25	11.5	10.8
	Cerro Gordo	70	16.7	15.3	Sioux	31	11.2	11.7
	Clinton	76	16.6	15.7	Story	100	14.9	18.2
	Des Moines	53	13.8	13.2	Wapello	50	15.6	14.1
	Fayette	39	19.8	15.8	Washington	29	15.8	13.9
	Jackson	23	12.7	11.7	Webster	53	14.9	13.0
	Jasper	55	17.3	15.3	Winneshek	20	10.6	10.5
	Lee	57	16.3	15.0				

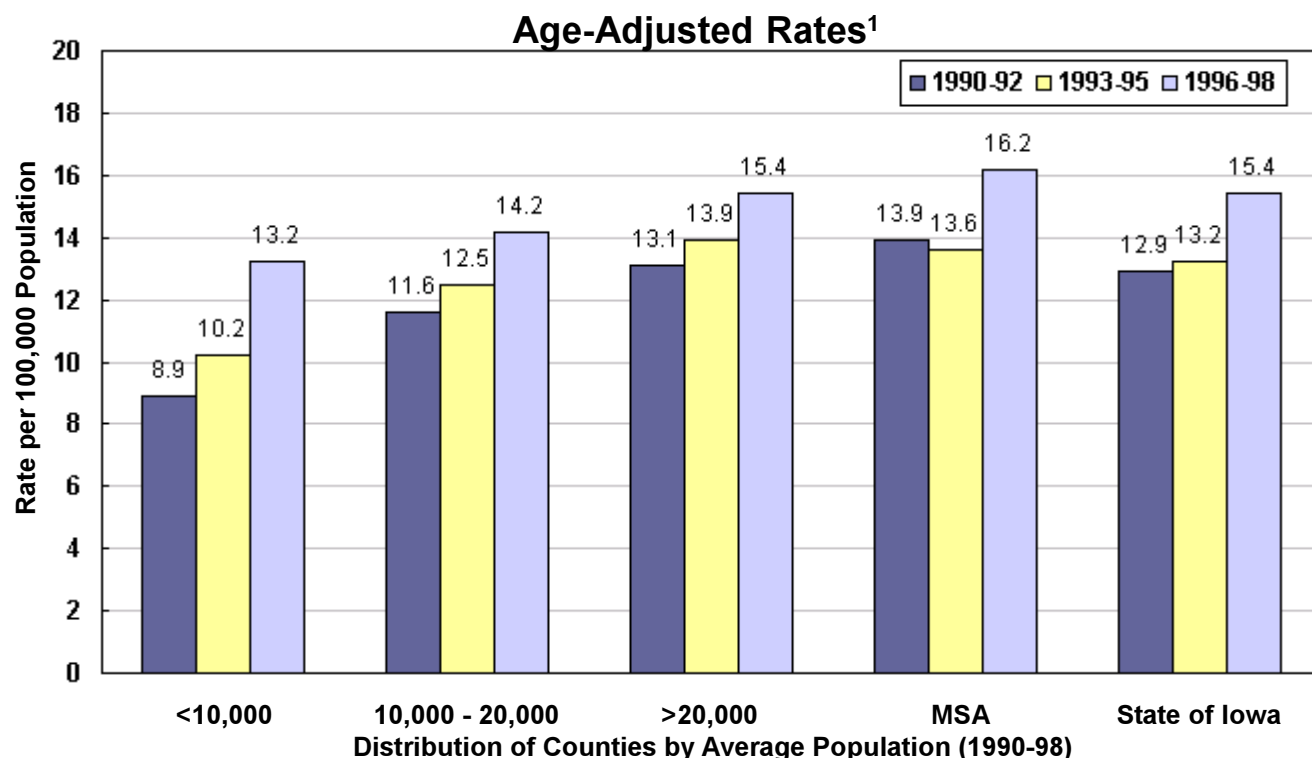
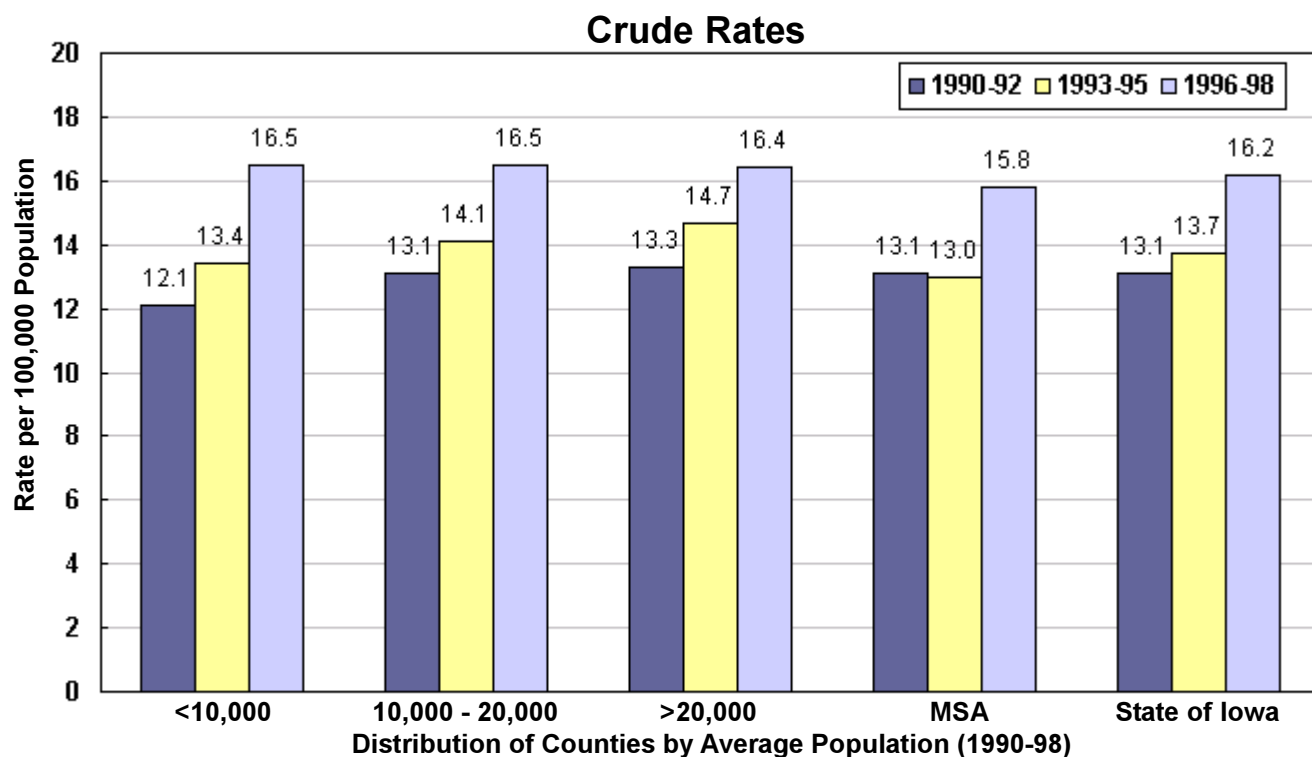
	County				County			
	Number	Crude	Adjusted		Number	Crude	Adjusted	
MSA Counties	Black Hawk	188	17.0	17.0	Polk	400	12.9	13.5
	Dallas	48	16.2	15.6	Pottawattamie	91	12.0	11.7
	Dubuque	136	17.2	17.7	Scott	179	12.8	13.6
	Johnson	139	15.5	19.5	Warren	50	14.5	15.4
	Linn	223	14.0	14.2	Woodbury	110	12.1	12.5
	Group Totals							
Number:	1,564							
Crude:	14.0							
Adjusted:	14.6							

¹Rates per 100,000 population

²Adjusted to Year 2000 US population

Source: Iowa Cancer Registry,
The University of Iowa

Skin Melanoma Incidence by County Group 1990-1998



¹Adjusted to Year 2000 US population

Skin Melanoma Mortality 1990-1998

TOTAL	Number	Crude ¹	Adjusted ^{1,2}
State of Iowa	697	2.7	2.5

	County				County							
	Number	Crude ¹	Adjusted ^{1,2}	Number	Crude ¹	Adjusted ^{1,2}	Number	Crude ¹	Adjusted ^{1,2}			
Counties with Average Population <10,000	Adair	5	6.7	5.6	Lucas	4	4.9	4.0	Monroe	*	*	*
	Adams	*	*	*	Osceola	*	*	*	Pocahontas	5	6.1	4.1
	Audubon	5	7.9	6.3	Ringgold	4	8.3	4.8	Taylor	*	*	*
	Clarke	*	*	*	Van Buren	*	*	*	Wayne	*	*	*
	Davis	*	*	*	Worth	5	7.1	4.1				
	Decatur	4	5.4	4.9								
	Fremont	*	*	*								
	Howard	4	4.5	4.2								
	Ida	*	*	*								
	Group Totals											
Number:	48											
Crude:	3.8											
Adjusted:	2.8											

	County				County							
	Number	Crude	Adjusted	Number	Crude	Adjusted	Number	Crude	Adjusted			
Counties with Average Population 10,000 to 20,000	Allamakee	5	4.0	2.7	Henry	3	1.7	1.8	Humboldt	4	4.2	3.8
	Appanoose	4	3.3	2.7	Iowa	3	2.2	1.8	Jefferson	*	*	*
	Buena Vista	7	3.9	3.9	Jones	6	3.3	3.0	Keokuk	6	5.8	4.0
	Butler	3	2.1	1.3	Kossuth	*	*	*	Louisa	*	*	*
	Calhoun	*	*	*	Lyon	3	2.8	2.0	Madison	3	2.5	2.1
	Cass	3	2.2	1.3	Mills	*	*	*	Mitchell	*	*	*
	Cedar	8	5.0	4.6	Monona	3	3.3	1.8	Montgomery	4	3.7	3.5
	Cherokee	4	3.2	2.5	O'Brien	10	7.3	4.8	Page	4	2.6	1.6
	Chickasaw	*	*	*	Palo Alto	6	6.5	4.7	Poweshiek	4	2.3	2.7
	Clay	5	3.2	2.7	Sac	3	2.8	1.5	Shelby	5	4.2	4.5
	Clayton	3	1.8	1.2	Tama	4	2.5	2.7	Union	4	3.5	2.6
	Crawford	*	*	*	Winnebago	4	3.7	2.8	Wright	3	2.3	1.8
	Delaware	7	4.2	4.2								
	Dickinson	5	3.6	2.2								
	Emmet	3	3.0	2.2								
	Floyd	3	2.0	1.6								
	Franklin	*	*	*								
	Greene	4	4.4	3.2								
	Grundy	7	6.4	4.7								
	Guthrie	3	3.0	2.8								
Hamilton	6	4.1	3.3									
Hancock	7	6.4	4.6									
Hardin	*	*	*									
Harrison	6	4.5	4.1									

	County				County							
	Number	Crude	Adjusted	Number	Crude	Adjusted	Number	Crude	Adjusted			
Counties with Average Population >20,000	Benton	3	1.4	1.2	Mahaska	3	1.5	1.6	Marion	9	3.3	3.0
	Boone	5	2.2	1.9	Marshall	4	1.2	1.2	Muscatine	12	3.3	3.3
	Bremer	4	1.9	2.0	Plymouth	6	2.8	2.5	Sioux	7	2.5	2.5
	Buchanan	6	3.2	3.3	Story	10	1.5	1.9	Wapello	9	2.8	2.5
	Carroll	6	3.1	2.2	Washington	6	3.3	2.4	Webster	10	2.8	2.3
	Cerro Gordo	8	1.9	1.6	Winneshek	6	3.2	3.2				
	Clinton	9	2.0	1.7								
	Des Moines	17	4.4	4.0								
	Fayette	12	6.1	4.7								
	Jackson	5	2.8	2.6								
	Jasper	14	4.4	4.0								
	Lee	13	3.7	3.1								

	County				County							
	Number	Crude	Adjusted	Number	Crude	Adjusted	Number	Crude	Adjusted			
MSA Counties	Black Hawk	31	2.8	2.7	Polk	76	2.4	2.7	Pottawattamie	20	2.6	2.6
	Dallas	5	1.7	1.5	Scott	37	2.6	2.9	Warren	8	2.3	2.5
	Dubuque	19	2.4	2.4	Woodbury	24	2.6	2.6				
	Johnson	20	2.2	3.6								
	Linn	34	2.1	2.2								
	Group Totals											
Number:	274											
Crude:	2.4											
Adjusted:	2.6											

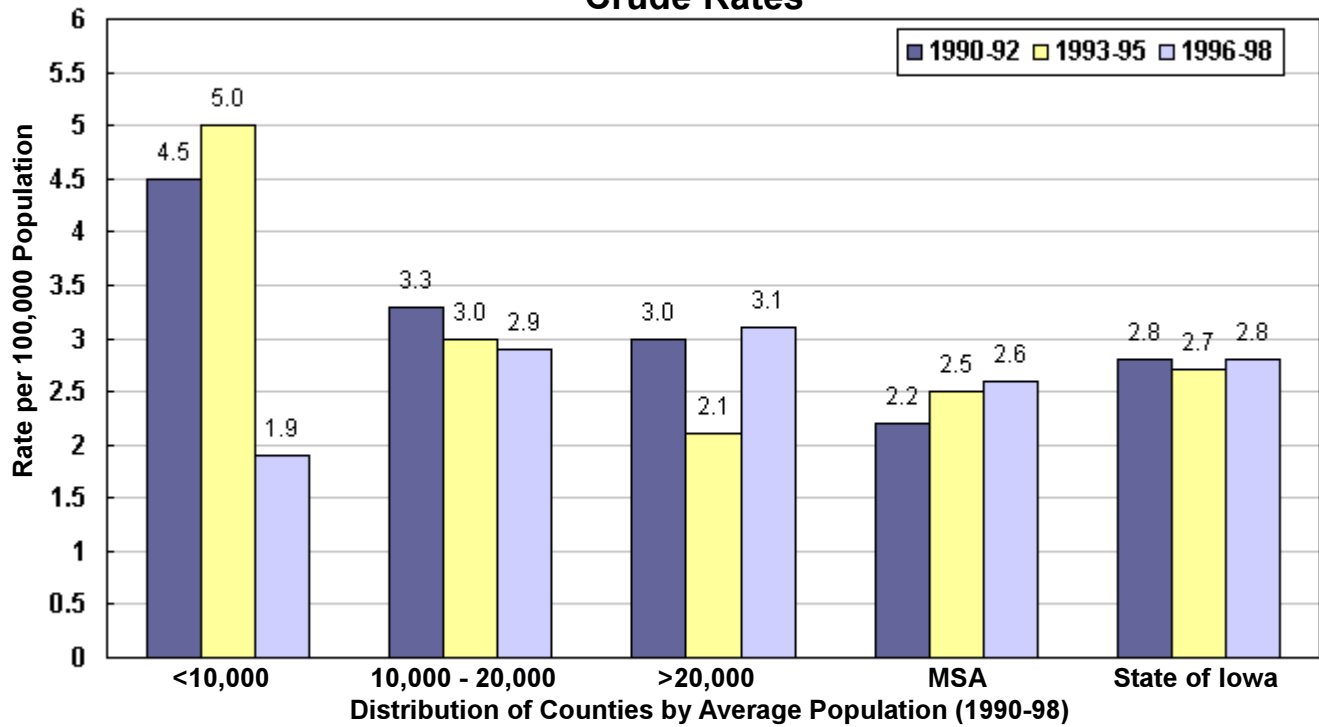
¹Rates per 100,000 population

²Number of events is less than 3

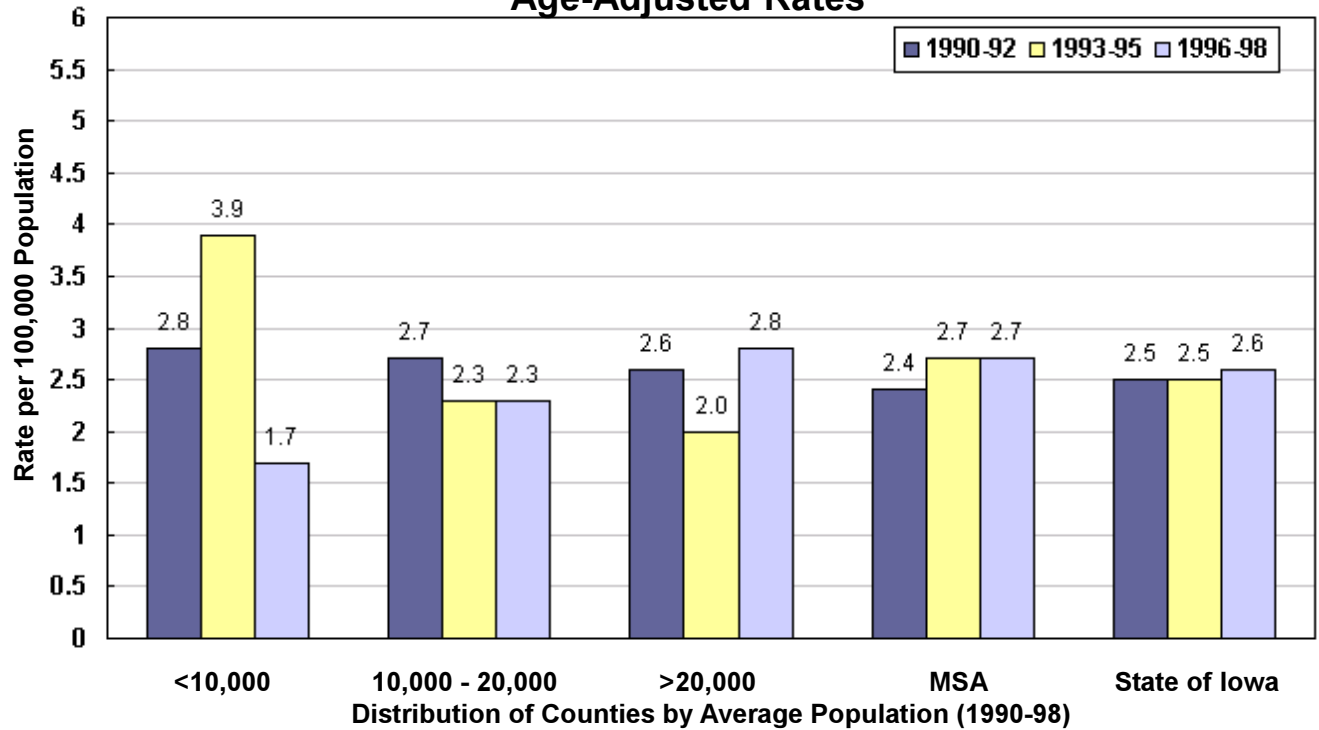
Source: IDPH Vital Records via Iowa Cancer Registry, The University of Iowa

Skin Melanoma Mortality by County Group 1990-1998

Crude Rates



Age-Adjusted Rates¹



¹Adjusted to Year 2000 US population

Oral Cavity (Excluding Lip) Incidence 1990-1998

TOTAL	Number	Crude ¹	Adjusted ^{1,2}
State of Iowa	2,309	9.1	8.6

	County				County							
	Number	Crude ¹	Adjusted ^{1,2}	Number	Crude ¹	Adjusted ^{1,2}	Number	Crude ¹	Adjusted ^{1,2}			
Counties with Average Population <10,000	Adair	6	8.0	6.0	Lucas	8	9.8	8.2	Monroe	8	10.9	8.4
	Adams	9	21.9	14.5	Osceola	5	7.8	6.3	Pocahontas	5	6.1	5.4
	Audubon	3	4.8	2.6	Ringgold	6	12.4	8.8	Taylor	6	9.4	7.3
	Clarke	12	16.1	13.0	Van Buren	3	4.3	3.5	Wayne	3	4.8	5.5
	Davis	3	4.0	3.1	Worth	6	8.5	7.5				
	Decatur	11	14.9	14.7								
	Fremont	5	6.9	6.0								
	Howard	8	9.1	6.8								
	Ida	8	10.8	6.7								
	Group Totals											
Number:	115											
Crude:	9.2											
Adjusted:	7.3											

	County				County							
	Number	Crude	Adjusted	Number	Crude	Adjusted	Number	Crude	Adjusted			
Counties with Average Population 10,000 to 20,000	Allamakee	15	11.9	9.5	Henry	16	9.0	8.5	Humboldt	10	10.6	9.2
	Appanoose	16	13.0	10.8	Iowa	9	6.6	5.3	Jefferson	8	5.3	5.1
	Buena Vista	20	11.2	9.9	Jones	17	9.5	8.5	Keokuk	9	8.6	7.6
	Butler	16	11.3	9.5	Kossuth	22	13.5	11.4	Louisa	4	3.8	4.0
	Calhoun	8	7.7	6.1	Lyon	9	8.4	7.0	Madison	7	5.9	5.0
	Cass	11	8.2	6.0	Mills	11	8.9	9.0	Mitchell	8	8.1	7.2
	Cedar	12	7.5	6.6	Monona	11	12.1	8.9	Montgomery	8	7.4	6.1
	Cherokee	15	12.1	9.1	O'Brien	16	11.7	9.1	O'Brien	16	11.7	9.1
	Chickasaw	7	5.8	6.0	Page	14	9.2	6.5	Palo Alto	8	8.6	7.1
	Clay	12	7.6	7.0	Poweshiek	14	8.2	6.7	Sac	10	9.2	5.9
	Clayton	13	7.7	6.4	Shelby	4	3.4	2.7	Tama	15	9.5	7.0
	Crawford	22	14.8	12.5	Union	9	8.0	6.6	Winnebago	11	10.2	8.0
	Delaware	*	*	*	Wright	9	7.0	4.3				
	Dickinson	8	5.7	3.7								
	Emmet	10	9.9	8.7								
	Floyd	10	6.7	5.1								
	Franklin	6	6.0	6.0								
	Greene	11	12.1	8.8								
	Grundy	14	12.8	9.9								
	Guthrie	5	4.9	3.8								
Hamilton	16	11.1	9.2									
Hancock	10	9.1	8.2									
Hardin	24	14.3	10.0									
Harrison	18	13.4	11.8									

	County				County							
	Number	Crude	Adjusted	Number	Crude	Adjusted	Number	Crude	Adjusted			
Counties with Average Population >20,000	Benton	13	6.1	5.7	Mahaska	16	8.2	6.7	Marion	21	7.6	7.0
	Boone	24	10.4	9.5	Marshall	31	9.0	7.5	Muscatine	24	6.5	6.6
	Bremer	21	10.1	9.0	Plymouth	27	12.4	11.3	Sioux	18	6.5	6.6
	Buchanan	23	12.1	11.5	Story	26	3.9	5.2	Wapello	41	12.8	10.4
	Carroll	17	8.8	7.2	Washington	17	9.3	8.0	Webster	39	11.0	9.6
	Cerro Gordo	54	12.9	11.1	Winnesiek	22	11.7	10.7				
	Clinton	46	10.1	9.1								
	Des Moines	41	10.7	9.3								
	Fayette	17	8.6	7.3								
	Jackson	14	7.7	6.8								
	Jasper	20	6.3	5.2								
	Lee	41	11.7	10.3								

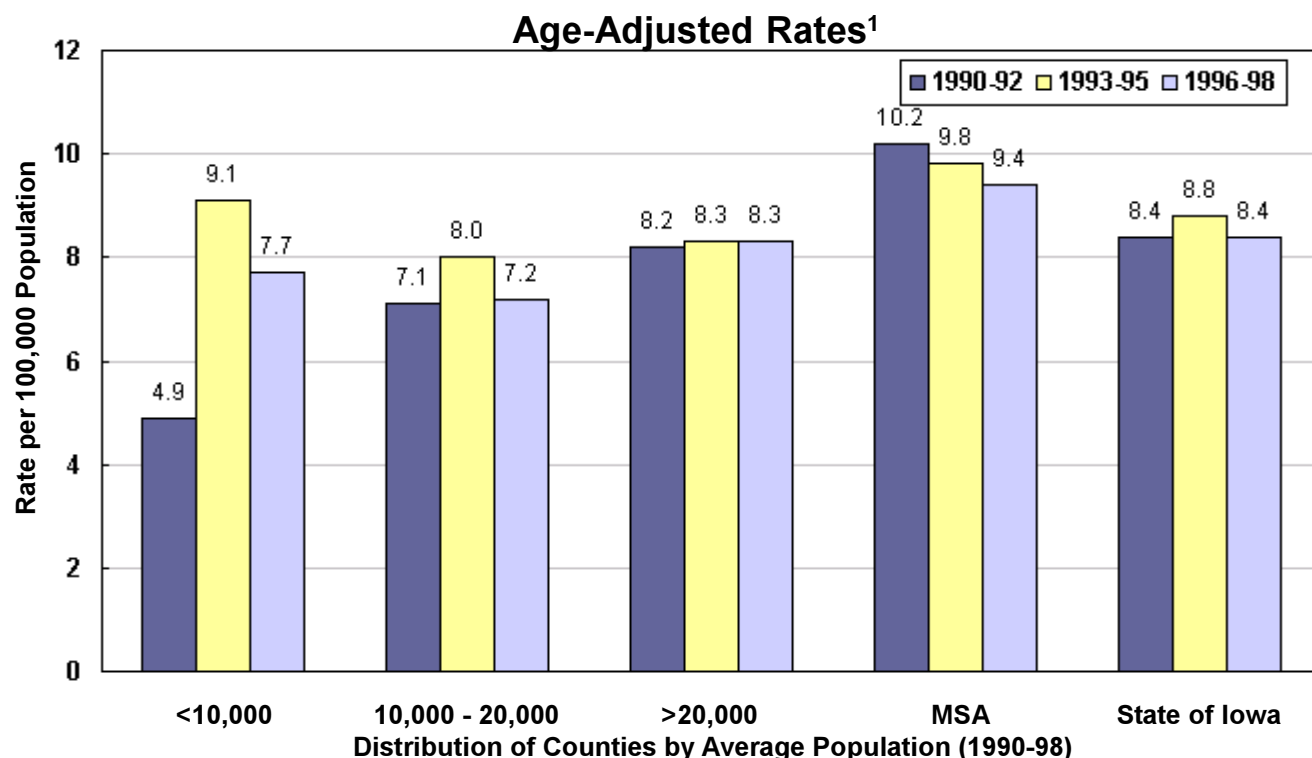
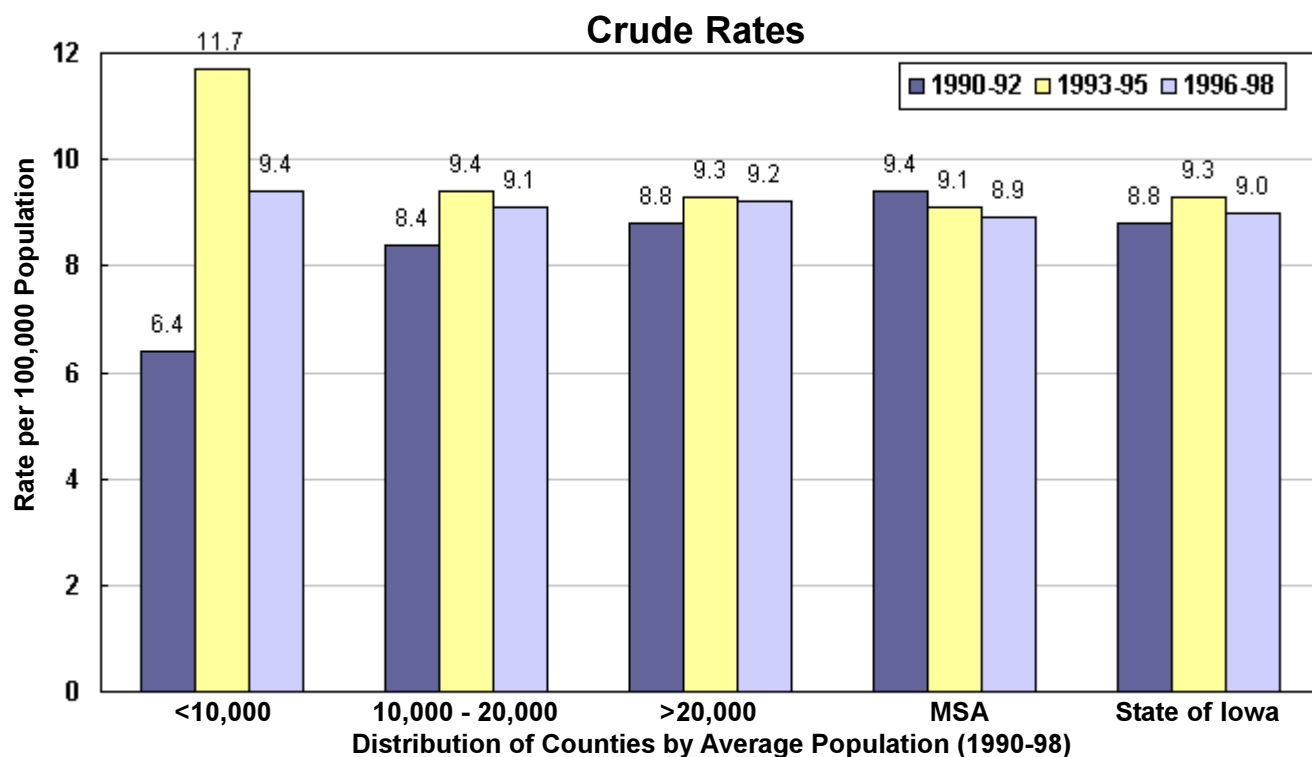
	County				County							
	Number	Crude	Adjusted	Number	Crude	Adjusted	Number	Crude	Adjusted			
MSA Counties	Black Hawk	107	9.7	9.8	Polk	289	9.3	10.2	Pottawattamie	80	10.6	10.2
	Dallas	21	7.1	7.1	Scott	109	7.8	8.6	Warren	30	8.7	9.5
	Dubuque	72	9.1	9.1	Woodbury	77	8.5	8.4				
	Johnson	59	6.6	9.8								
	Linn	177	11.1	11.7								
	Group Totals											
Number:	1,021											
Crude:	9.1											
Adjusted:	9.8											

¹Rates per 100,000 population

²Number of events is less than 3

Source: Iowa Cancer Registry, The University of Iowa

Oral Cavity (Excluding Lip) Incidence by County Group 1990-1998



¹Adjusted to Year 2000 US population

Oral Cavity (Excluding Lip) Mortality 1990-1998

TOTAL	Number	Crude ¹	Adjusted ^{1,2}
State of Iowa	721	2.8	2.5

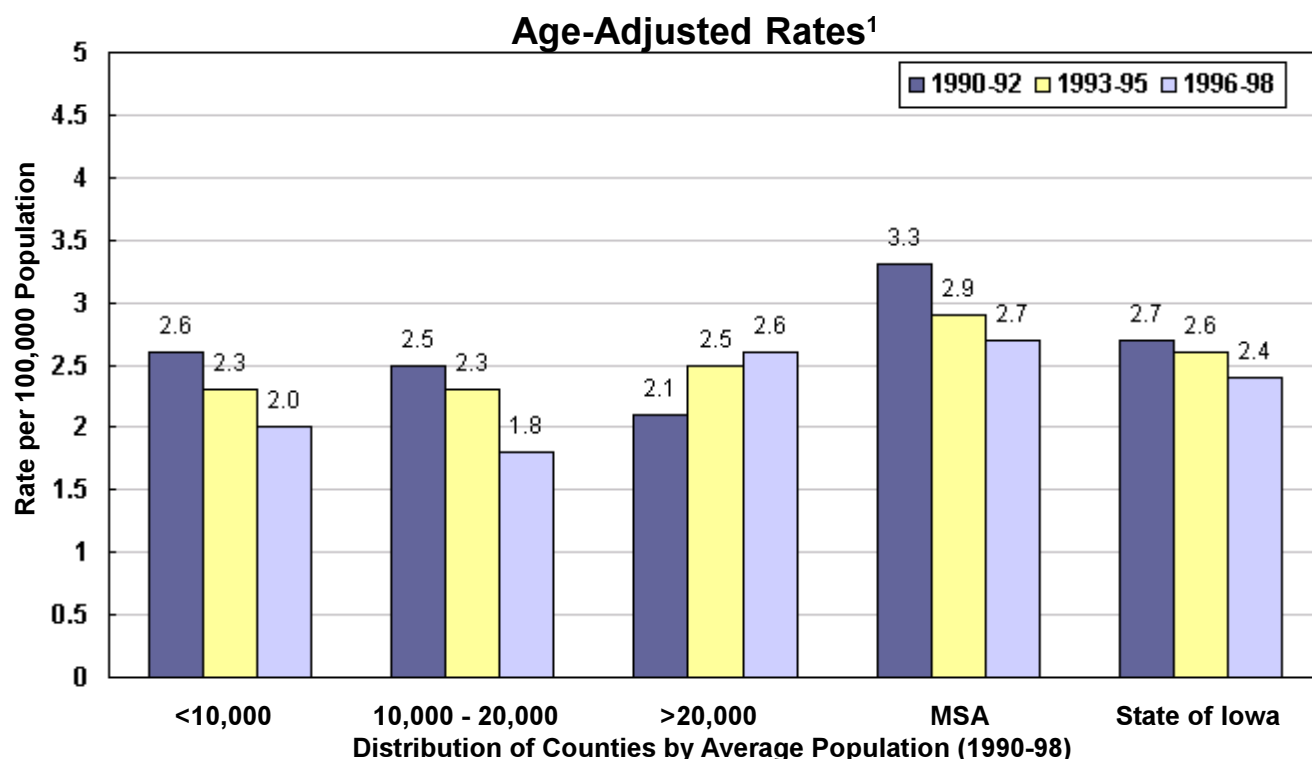
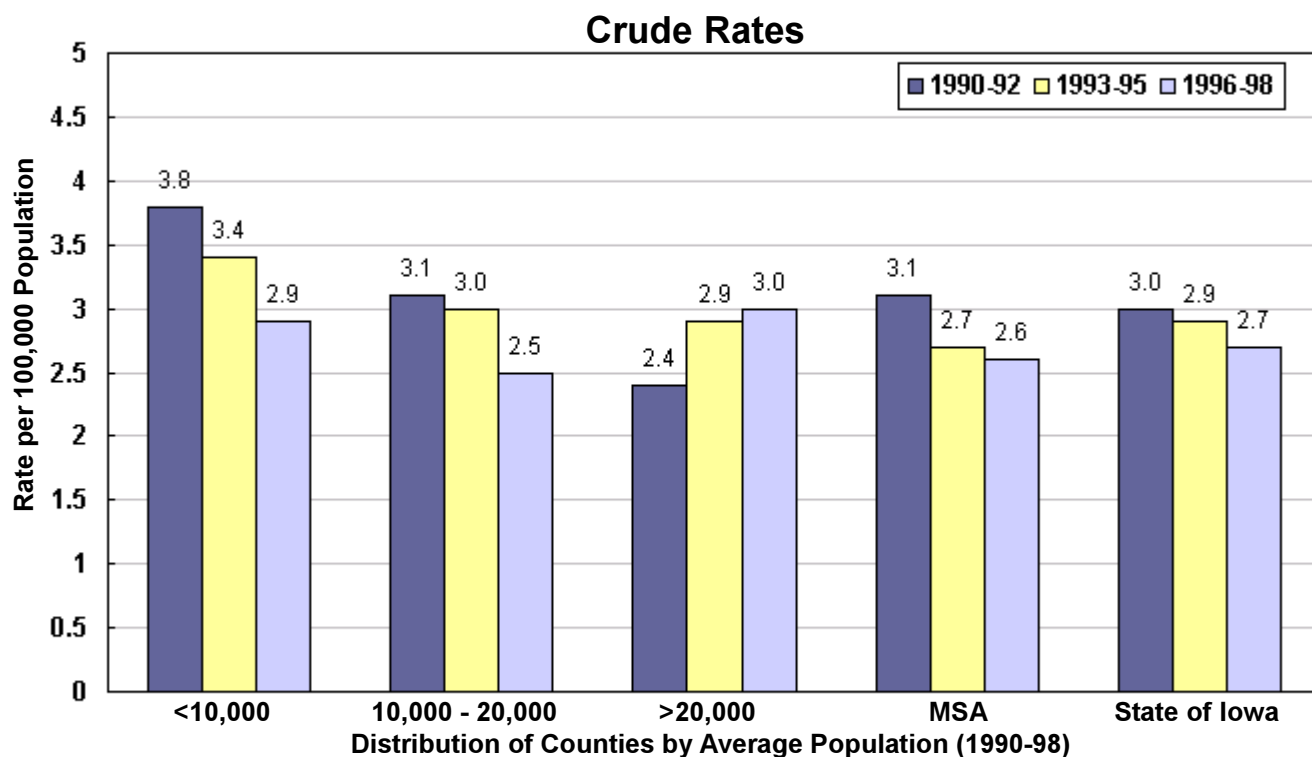
	County				County																																			
	Number	Crude ¹	Adjusted ^{1,2}	Number	Crude ¹	Adjusted ^{1,2}	Number	Crude ¹	Adjusted ^{1,2}																															
Counties with Average Population <10,000	Adair	4	5.4	3.4	Lucas	*	*	*	Monroe	*	*	*	Osceola	*	*	*	Pocahontas	*	*	*	Ringgold	*	*	*	Taylor	3	4.7	2.3	Van Buren	*	*	*	Wayne	*	*	*	Worth	*	*	*
	Adams	5	12.2	8.4																																				
	Audubon	*	*	*																																				
	Clarke	5	6.7	5.8																																				
	Davis	*	*	*																																				
	Decatur	4	5.4	3.4																																				
	Fremont	*	*	*																																				
	Howard	3	3.4	1.8																																				
	Ida	3	4.1	2.1																																				
	Group Totals																																							
Number:	42																																							
Crude:	3.4																																							
Adjusted:	2.3																																							

	County				County																																																																																															
	Number	Crude	Adjusted	Number	Crude	Adjusted	Number	Crude	Adjusted																																																																																											
Counties with Average Population 10,000 to 20,000	Allamakee	5	4.0	2.5	Henry	5	2.8	2.4	Humboldt	5	5.3	3.8	Iowa	6	4.4	3.2	Jefferson	*	*	*	Jones	3	1.7	1.6	Keokuk	5	4.8	3.0	Kossuth	6	3.7	2.4	Louisa	3	2.8	2.4	Lyon	*	*	*	Madison	4	3.4	3.1	Mills	4	3.2	3.3	Mitchell	*	*	*	Monona	6	6.6	4.9	Montgomery	*	*	*	O'Brien	*	*	*	Page	6	3.9	2.6	Palo Alto	3	3.2	2.3	Poweshiek	3	1.8	1.5	Sac	4	3.7	2.2	Shelby	7	5.9	3.9	Tama	5	3.2	2.2	Union	3	2.7	2.0	Winnebago	4	3.7	2.8	Wright	3	2.3	1.3
	Appanoose	4	3.3	3.1																																																																																																
	Buena Vista	3	1.7	1.1																																																																																																
	Butler	*	*	*																																																																																																
	Calhoun	*	*	*																																																																																																
	Cass	5	3.7	2.1																																																																																																
	Cedar	5	3.1	2.3																																																																																																
	Cherokee	*	*	*																																																																																																
	Chickasaw	*	*	*																																																																																																
	Clay	4	2.5	2.2																																																																																																
Clayton	*	*	*																																																																																																	
Crawford	4	2.7	2.2																																																																																																	
Delaware	*	*	*																																																																																																	
Dickinson	7	5.0	3.5																																																																																																	
Emmet	4	3.9	4.0																																																																																																	
Floyd	4	2.7	1.6																																																																																																	
Franklin	3	3.0	2.4																																																																																																	
Greene	3	3.3	2.6																																																																																																	
Grundy	4	3.7	3.2																																																																																																	
Guthrie	3	3.0	2.5																																																																																																	
Hamilton	5	3.5	2.4																																																																																																	
Hancock	3	2.7	2.2																																																																																																	
Hardin	10	5.9	4.7																																																																																																	
Harrison	4	3.0	2.8																																																																																																	

	County				County																																											
	Number	Crude	Adjusted	Number	Crude	Adjusted	Number	Crude	Adjusted																																							
Counties with Average Population >20,000	Benton	4	1.9	1.5	Mahaska	6	3.1	2.3	Marion	5	1.8	1.5	Marshall	10	2.9	2.2	Muscatine	8	2.2	2.3	Plymouth	7	3.2	2.6	Sioux	6	2.2	2.1	Story	15	2.2	2.8	Wapello	12	3.7	2.8	Washington	5	2.7	2.2	Webster	12	3.4	2.6	Winnesiek	8	4.2	3.6
	Boone	8	3.5	3.2																																												
	Bremer	7	3.4	3.0																																												
	Buchanan	5	2.6	2.3																																												
	Carroll	8	4.1	3.0																																												
	Cerro Gordo	11	2.6	2.1																																												
	Clinton	13	2.8	2.5																																												
	Des Moines	13	3.4	2.8																																												
	Fayette	6	3.0	2.1																																												
	Jackson	*	*	*																																												
Jasper	7	2.2	1.9																																													
Lee	10	2.9	2.5																																													

	County				County																														
	Number	Crude	Adjusted	Number	Crude	Adjusted	Number	Crude	Adjusted																										
MSA Counties	Black Hawk	33	3.0	2.9	Polk	83	2.7	2.9	Pottawattamie	23	3.0	2.8	Scott	48	3.4	3.8	Warren	5	1.5	1.7	Woodbury	28	3.1	3.0											
	Dallas	3	1.0	0.9																															
	Dubuque	24	3.0	2.9																															
	Johnson	11	1.2	1.9																															
	Linn	54	3.4	3.6																															
Group Totals																																			
Number:	312																																		
Crude:	2.8																																		
Adjusted:	3.0																																		

Oral Cavity (Excluding Lip) Mortality by County Group 1990-1998



¹Adjusted to Year 2000 US population

Cervical Cancer Incidence 1990-1998

TOTAL	Number	Crude ¹	Adjusted ^{1,2}
State of Iowa	1,233	9.4	9.3

	County				County					
	Number	Crude ¹	Adjusted ^{1,2}	Number	Crude ¹	Adjusted ^{1,2}	Number	Crude ¹	Adjusted ^{1,2}	
Counties with Average Population <10,000	Adair	6	15.6	15.0	Lucas	*	*	*		
	Adams	*	*	*	Monroe	6	15.9	10.8		
	Audubon	*	*	*	Osceola	7	21.3	24.1		
	Clarke	6	15.5	16.7	Pocahontas	3	7.1	5.5		
	Davis	2	5.2	6.4	Ringgold	*	*	*		
	Decatur	9	23.7	27.1	Taylor	5	14.9	14.2		
	Fremont	9	23.7	23.1	Van Buren	4	11.3	8.6		
	Howard	5	11.1	12.3	Wayne	3	9.2	7.0		
	Ida	*	*	*	Worth	4	11.0	9.4		
	Group Totals									
Number:	78									
Crude:	12.1									
Adjusted:	11.8									

	County				County					
	Number	Crude	Adjusted	Number	Crude	Adjusted	Number	Crude	Adjusted	
Counties with Average Population 10,000 to 20,000	Allamakee	6	9.4	8.9	Henry	13	14.8	14.6		
	Appanoose	11	17.1	17.8	Humboldt	5	10.3	8.8		
	Buena Vista	12	13.1	13.6	Iowa	4	5.7	4.7		
	Butler	*	*	*	Jefferson	9	11.7	11.5		
	Calhoun	*	*	*	Jones	8	9.3	8.6		
	Cass	7	10.0	10.0	Keokuk	*	*	*		
	Cedar	8	9.8	9.7	Kossuth	9	10.8	11.8		
	Cherokee	6	9.4	9.2	Louisa	10	19.0	18.1		
	Chickasaw	5	8.3	8.0	Lyon	*	*	*		
	Clay	9	10.9	10.8	Madison	6	9.9	10.3		
	Clayton	12	14.0	16.6	Mills	6	9.6	9.7		
	Crawford	6	7.9	7.7	Mitchell	3	5.9	7.1		
	Delaware	7	8.4	8.2	Monona	4	8.4	7.0		
	Dickinson	7	9.6	9.2	Montgomery	7	12.4	10.3		
	Emmet	9	17.1	18.0	O'Brien	7	9.9	8.2		
	Floyd	8	10.2	9.1	Page	8	10.4	10.4		
	Franklin	3	5.8	6.0	Palo Alto	6	12.5	11.6		
	Greene	5	10.6	10.8	Poweshiek	8	9.1	8.7		
	Grundy	4	7.1	8.4	Sac	5	9.0	7.2		
	Guthrie	6	11.4	12.3	Shelby	6	9.9	12.5		
Hamilton	8	10.8	9.4	Tama	5	6.1	5.9			
Hancock	*	*	*	Union	5	8.4	7.6			
Hardin	10	11.5	9.7	Winnebago	4	7.2	7.0			
Harrison	10	14.4	13.3	Wright	8	12.0	12.2			

	County				County					
	Number	Crude	Adjusted	Number	Crude	Adjusted	Number	Crude	Adjusted	
Counties with Average Population >20,000	Benton	11	10.1	10.0	Mahaska	13	13.0	14.1		
	Boone	13	10.9	11.5	Marion	7	5.0	5.3		
	Bremer	5	4.7	4.8	Marshall	13	17.4	6.9		
	Buchanan	11	11.4	12.0	Muscatine	23	12.3	11.9		
	Carroll	12	12.0	12.6	Plymouth	4	3.6	3.4		
	Cerro Gordo	14	6.3	5.7	Sioux	7	4.9	5.9		
	Clinton	21	8.9	9.3	Story	18	5.6	7.0		
	Des Moines	16	8.0	7.6	Wapello	14	8.4	7.5		
	Fayette	13	12.9	12.7	Washington	11	11.6	10.9		
	Jackson	5	5.4	5.8	Webster	24	12.9	11.3		
	Jasper	19	11.8	11.5	Winneshek	5	5.2	5.7		
	Lee	15	8.5	7.7						

	County				County					
	Number	Crude	Adjusted	Number	Crude	Adjusted	Number	Crude	Adjusted	
MSA Counties	Black Hawk	56	9.7	9.7	Polk	146	9.0	8.9		
	Dallas	18	11.9	11.3	Pottawattamie	44	11.2	11.4		
	Dubuque	35	8.6	8.8	Scott	70	9.7	9.9		
	Johnson	29	6.4	7.7	Warren	15	8.5	8.5		
	Linn	84	10.3	10.0	Woodbury	51	10.9	10.8		
	Group Totals									
Number:	548									
Crude:	9.5									
Adjusted:	9.5									

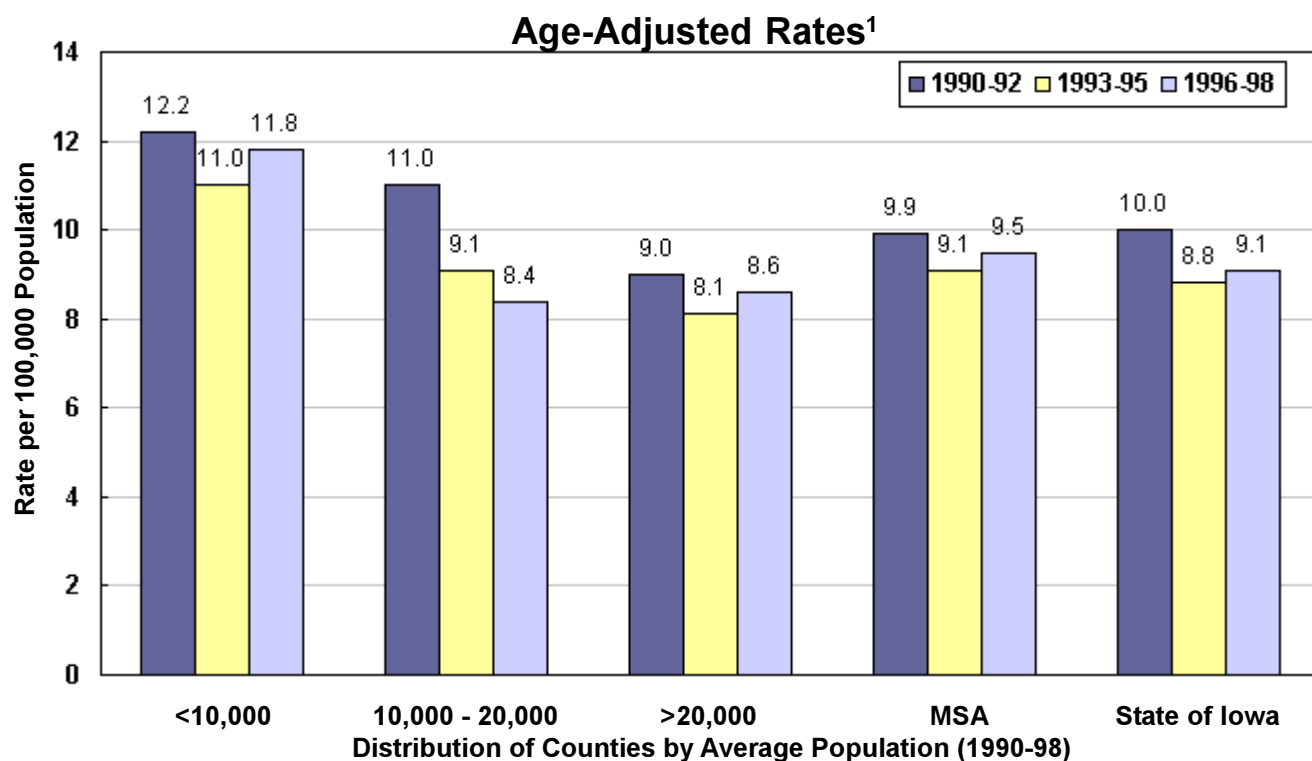
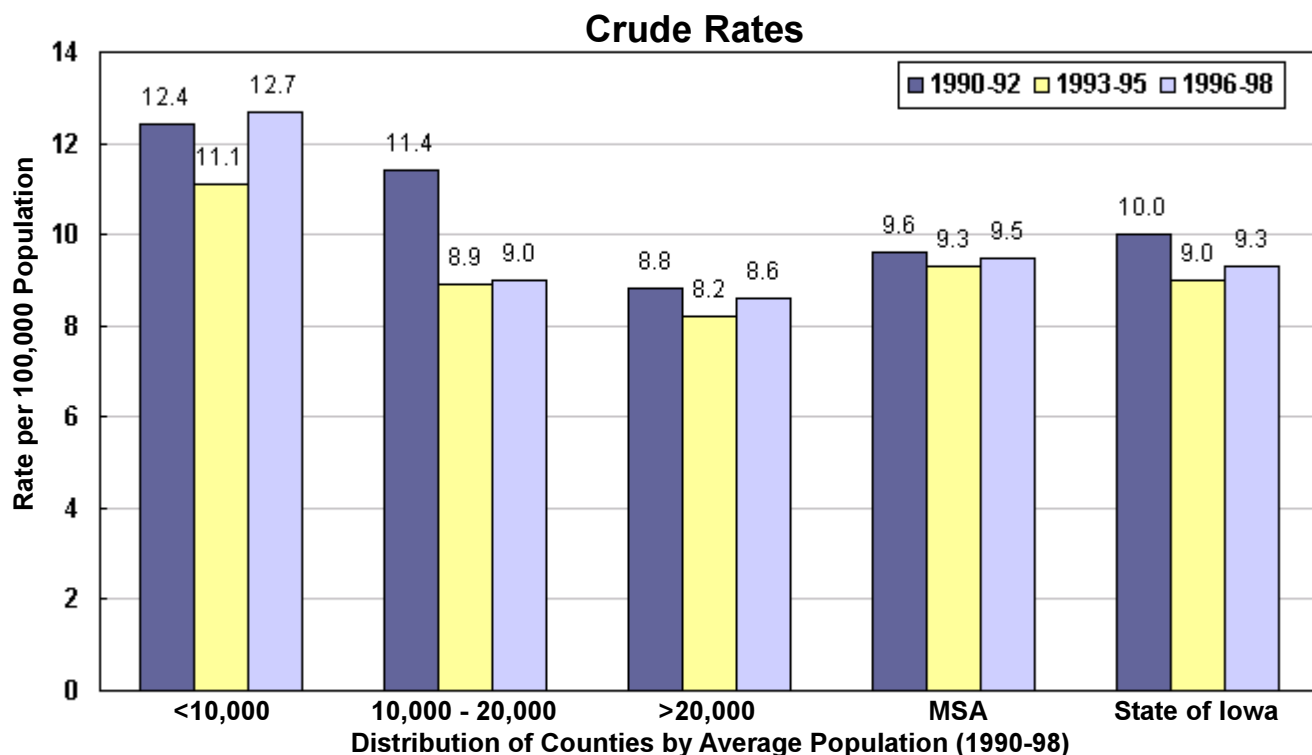
¹Rates per 100,000 population

*Number of events is less than 3

Source: Iowa Cancer Registry, The University of Iowa

²Adjusted to Year 2000 US population

Cervical Cancer Incidence by County Group 1990-1998



¹Adjusted to Year 2000 US population

Cervical Cancer Mortality 1990-1998

TOTAL	Number	Crude ¹	Adjusted ^{1,2}
State of Iowa	373	2.9	2.6

	County				County			
	County	Number	Crude ¹	Adjusted ^{1,2}	County	Number	Crude ¹	Adjusted ^{1,2}
Counties with Average Population <10,000	Adair	*	*	*	Lucas	*	*	*
	Adams	*	*	*	Monroe	3	7.9	4.3
	Audubon	*	*	*	Osceola	*	*	*
	Clarke	*	*	*	Pocahontas	*	*	*
	Davis	*	*	*	Ringgold	*	*	*
	Decatur	*	*	*	Taylor	*	*	*
	Fremont	*	*	*	Van Buren	*	*	*
	Howard	*	*	*	Wayne	4	12.3	9.2
	Ida	*	*	*	Worth	*	*	*
	Group Totals							
Number:	26							
Crude:	4.0							
Adjusted:	3.0							

	County				County			
	County	Number	Crude	Adjusted	County	Number	Crude	Adjusted
Counties with Average Population 10,000 to 20,000	Allamakee	*	*	*	Henry	*	*	*
	Appanoose	4	6.2	5.6	Humboldt	*	*	*
	Buena Vista	5	5.4	4.8	Iowa	*	*	*
	Butler	*	*	*	Jefferson	*	*	*
	Calhoun	*	*	*	Jones	*	*	*
	Cass	*	*	*	Keokuk	*	*	*
	Cedar	4	4.9	4.6	Kossuth	*	*	*
	Cherokee	3	4.7	3.6	Louisa	3	5.7	5.1
	Chickasaw	*	*	*	Lyon	*	*	*
	Clay	*	*	*	Madison	3	5.0	4.8
	Clayton	4	4.7	4.9	Mills	4	6.4	6.2
	Crawford	*	*	*	Mitchell	*	*	*
	Delaware	3	3.6	2.8	Monona	4	8.4	8.2
	Dickinson	*	*	*	Montgomery	*	*	*
	Emmet	3	5.7	4.4	O'Brien	3	4.2	2.8
	Floyd	*	*	*	Page	*	*	*
	Franklin	*	*	*	Palo Alto	*	*	*
	Greene	*	*	*	Poweshiek	3	3.4	3.3
	Grundy	*	*	*	Sac	4	7.2	6.1
	Guthrie	*	*	*	Shelby	*	*	*
Hamilton	*	*	*	Tama	4	4.9	3.7	
Hancock	*	*	*	Union	3	5.0	4.5	
Hardin	*	*	*	Winnebago	*	*	*	
Harrison	4	5.7	4.7	Wright	4	6.0	3.8	
Group Totals								
Number:	98							
Crude:	3.1							
Adjusted:	2.6							

	County				County			
	County	Number	Crude	Adjusted	County	Number	Crude	Adjusted
Counties with Average Population >20,000	Benton	*	*	*	Mahaska	4	4.0	3.8
	Boone	7	5.8	6.0	Marion	*	*	*
	Bremer	3	2.8	2.7	Marshall	4	2.3	1.8
	Buchanan	3	3.1	3.3	Muscatine	9	4.8	4.5
	Carroll	3	3.0	2.5	Plymouth	*	*	*
	Cerro Gordo	5	2.3	2.2	Sioux	*	*	*
	Clinton	5	2.1	1.6	Story	5	1.5	1.9
	Des Moines	6	3.0	2.2	Wapello	6	3.6	2.6
	Fayette	4	4.0	3.6	Washington	*	*	*
	Jackson	4	4.4	4.8	Webster	4	2.2	1.6
	Jasper	*	*	*	Winneshek	*	*	*
	Lee	*	*	*				
	Group Totals							
Number:	80							
Crude:	2.3							
Adjusted:	2.1							

	County				County			
	County	Number	Crude	Adjusted	County	Number	Crude	Adjusted
MSA Counties	Black Hawk	16	2.8	2.7	Polk	37	2.3	2.3
	Dallas	6	4.0	3.7	Pottawattamie	12	3.1	2.8
	Dubuque	15	3.7	3.6	Scott	33	4.6	4.7
	Johnson	5	1.1	1.4	Warren	4	2.3	2.3
	Linn	20	2.5	2.3	Woodbury	21	4.5	4.0
	Group Totals							
Number:	169							
Crude:	2.9							
Adjusted:	2.9							

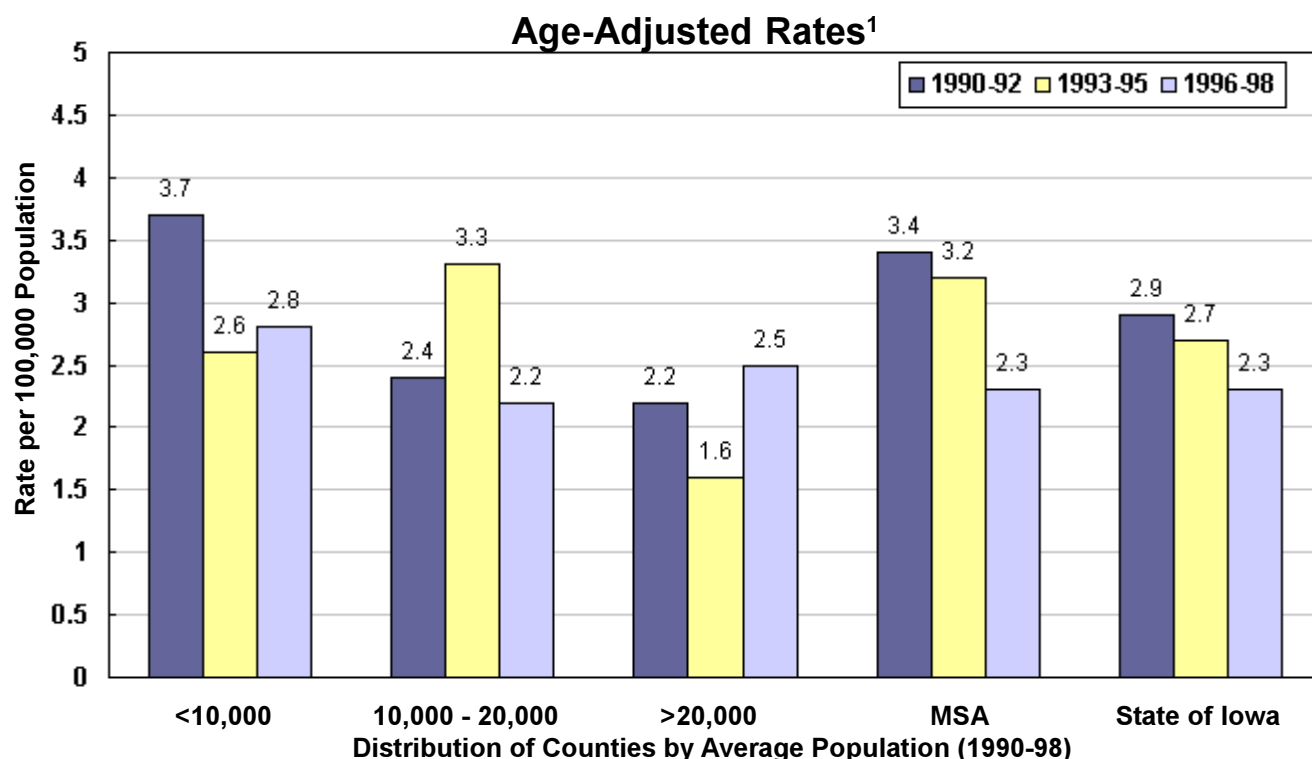
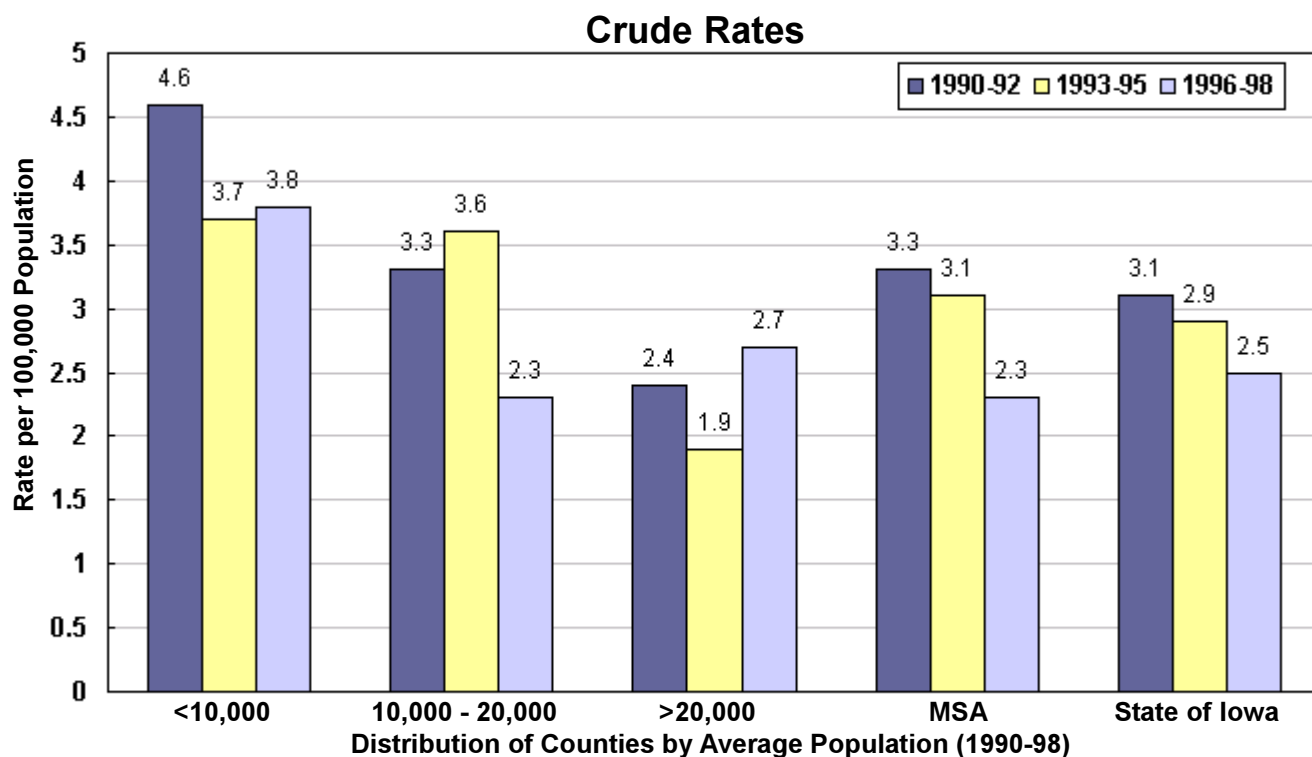
¹Rates per 100,000 population

*Number of events is less than 3

²Adjusted to Year 2000 US population

Source: IDPH Vital Records via Iowa Cancer Registry, The University of Iowa

Cervical Cancer Mortality by County Group 1990-1998



¹Adjusted to Year 2000 US population

(This page blank)