

## Injury Mortality

Injuries are the leading cause of death in persons 1-34 years of age both in Iowa and nationally. It is important to differentiate the etiology of the injury death to determine preventive strategies for injury control and to provide resources for trauma response through a statewide trauma system. The state of Iowa is in the process of developing a statewide system to be implemented in 2001.

From 1990-1998, transportation-related mortality accounted for 4,617 deaths in Iowa, 93% of which were motor vehicle fatalities. The rates for these fatalities are highest in the rural counties, and lowest in the most urban counties. Deaths from suicide, firearms, and falls show some variability between county levels, but in general have remained constant for the 9-year period. Homicide rates show a slight increase overall, reflected by increases in the more rural counties. Poisoning in general have increased slightly after an early decrease in the most rural counties. Death from burns had increased slightly in the 1993-95 period, but has now, in general, returned to the 1990-92 levels. Drowning deaths continue to decrease across all county levels. Deaths from all other unintentional injuries have remained about the same over the 9-year period.

The source of this information is the cause of death data obtained from death certificates filed at the Iowa Department of Public Health. Analysis was done by the State Health Registry of Iowa at The University of Iowa. Age-adjusted rates were calculated using the Year 2000 US population distribution.

### HIGHLIGHTS...

- Injuries are the leading cause of death in persons 1-34 years of age.
- In 2001, Iowa will implement a statewide trauma system.
- Motor vehicle deaths account for 93% of all transportation deaths in Iowa.

## All Transportation Mortality 1990-1998

TOTAL	Number	Crude <sup>1</sup>	Adjusted <sup>1,2</sup>
State of Iowa	4,617	18.2	17.7

	County				County				
	Number	Crude <sup>1</sup>	Adjusted <sup>1,2</sup>	Number	Crude <sup>1</sup>	Adjusted <sup>1,2</sup>	Number	Crude <sup>1</sup>	Adjusted <sup>1,2</sup>
<b>Counties with Average Population &lt;10,000</b>	Adair	25	33.5	33.2	Lucas	32	39.2	37.9	
	Adams	12	29.2	35.7	Monroe	26	35.5	39.5	
	Audubon	13	20.6	18.8	Osceola	16	24.9	28.1	
	Clarke	25	33.6	38.5	Pocahontas	19	23.1	25.8	
	Davis	31	41.0	41.0	Ringgold	12	24.8	23.9	
	Decatur	20	27.2	26.0	Taylor	14	21.9	25.1	
	Fremont	20	27.6	30.8	Van Buren	20	28.6	28.9	
	Howard	15	17.0	18.7	Wayne	28	45.1	54.7	
	Ida	19	25.8	31.0	Worth	13	18.4	18.6	
	<b>Group Totals</b>								
Number:	360								
Crude:	28.7								
Adjusted:	30.6								

	County				County			
	Number	Crude	Adjusted	Number	Crude	Adjusted	Number	Crude
<b>Counties with Average Population 10,000 to 20,000</b>	Allamakee	40	31.8	33.3	Henry	37	20.9	20.6
	Appanoose	32	26.0	27.4	Humboldt	20	21.2	24.3
	Buena Vista	35	19.5	17.2	Iowa	32	23.6	25.3
	Butler	25	17.7	19.2	Jefferson	40	26.6	27.3
	Calhoun	18	17.4	19.3	Jones	50	27.8	27.6
	Cass	31	23.1	24.7	Keokuk	39	37.5	37.7
	Cedar	36	22.6	23.6	Kossuth	33	20.2	20.2
	Cherokee	31	25.1	25.0	Louisa	32	30.3	30.0
	Chickasaw	28	23.3	25.1	Lyon	25	23.3	23.1
	Clay	28	17.7	18.5	Madison	32	27.0	29.0
	Clayton	52	30.7	31.1	Mills	32	25.9	26.8
	Crawford	42	28.2	27.2	Mitchell	25	25.2	22.7
	Delaware	28	17.0	17.9	Monona	26	28.7	32.8
	Dickinson	27	19.3	18.0	Montgomery	25	23.3	24.2
	Emmet	22	21.7	22.0	O'Brien	29	21.1	23.0
	Floyd	31	20.6	19.5	Page	30	19.7	18.9
	Franklin	24	24.0	24.2	Palo Alto	29	31.2	31.1
	Greene	20	22.1	23.9	Poweshiek	27	15.9	15.4
	Grundy	19	17.4	18.9	Sac	32	29.5	31.4
	Guthrie	15	14.8	17.0	Shelby	31	26.2	27.4
Hamilton	36	24.9	23.8	Tama	53	33.4	35.9	
Hancock	23	20.9	20.9	Union	27	23.9	23.0	
Hardin	35	20.8	18.6	Winnebago	23	21.4	20.1	
Harrison	50	37.1	38.5	Wright	31	24.2	24.2	

	County				County			
	Number	Crude	Adjusted	Number	Crude	Adjusted	Number	Crude
<b>Counties with Average Population &gt;20,000</b>	Benton	39	18.2	18.8	Mahaska	45	23.1	23.2
	Boone	39	17.0	16.6	Marion	63	22.8	22.4
	Bremer	38	18.2	16.9	Marshall	83	24.0	24.4
	Buchanan	35	18.4	19.3	Muscatine	72	19.6	19.3
	Carroll	44	22.7	23.5	Plymouth	37	17.0	17.6
	Cerro Gordo	68	16.2	16.1	Sioux	48	17.3	16.3
	Clinton	87	19.0	18.9	Story	82	12.2	11.7
	Des Moines	70	18.3	18.6	Wapello	84	26.1	27.1
	Fayette	47	23.8	23.8	Washington	37	20.2	20.8
	Jackson	47	26.0	26.5	Webster	67	18.8	18.6
	Jasper	54	17.0	17.4	Winneshek	23	12.2	10.7
	Lee	95	27.2	27.7				

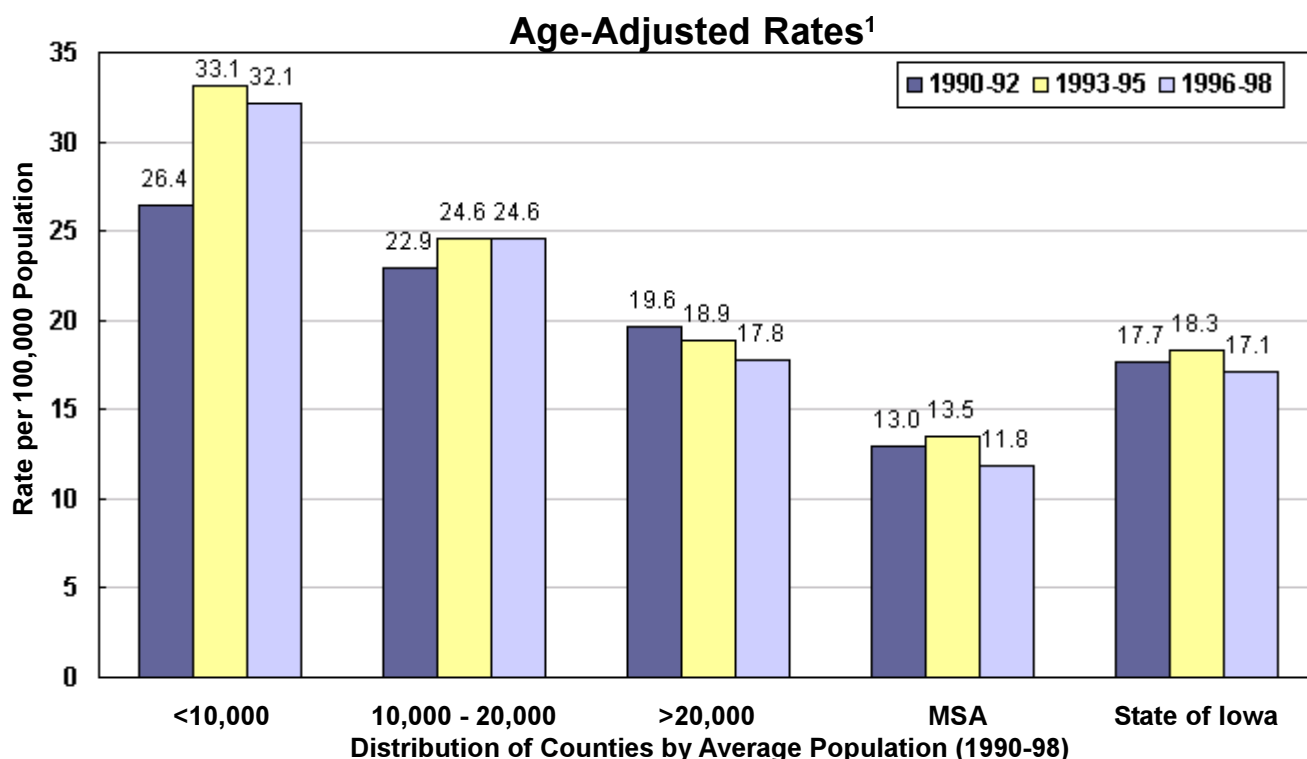
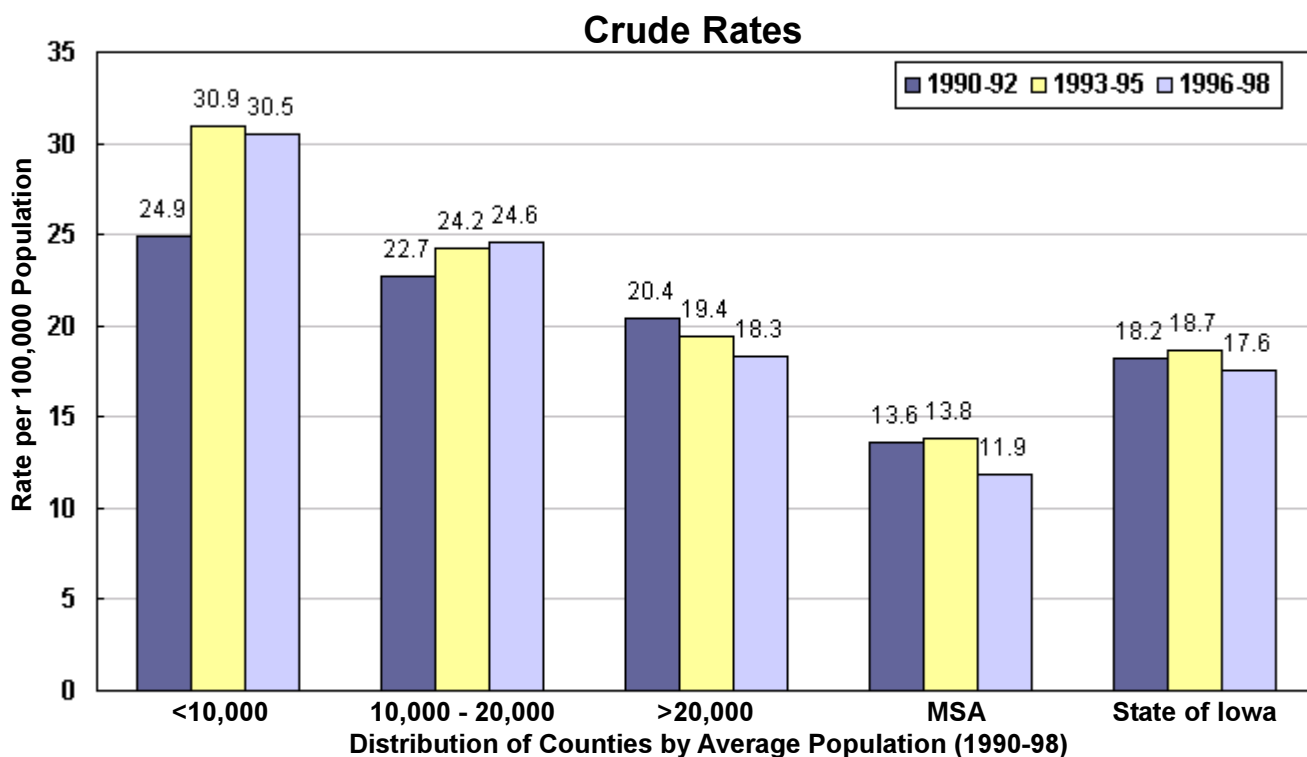
	County				County				
	Number	Crude	Adjusted	Number	Crude	Adjusted	Number	Crude	Adjusted
<b>MSA Counties</b>	Black Hawk	184	16.6	16.2	Polk	394	12.7	12.7	
	Dallas	71	24.0	25.6	Pottawattamie	125	16.5	16.6	
	Dubuque	104	13.2	12.9	Scott	155	11.1	11.2	
	Johnson	79	8.8	8.9	Warren	37	10.7	10.8	
	Linn	192	12.1	11.9	Woodbury	124	13.7	13.4	
	<b>Group Totals</b>								
Number:	1,465								
Crude:	13.1								
Adjusted:	12.8								

<sup>1</sup>Rates per 100,000 population

<sup>2</sup>Adjusted to Year 2000 US population

Source: IDPH Vital Records via Iowa Cancer Registry, The University of Iowa

## All Transportation Mortality by County Group 1990-98



<sup>1</sup>Adjusted to Year 2000 US population

## Motor Vehicle Traffic Mortality 1990-1998

TOTAL	Number	Crude <sup>1</sup>	Adjusted <sup>1,2</sup>
State of Iowa	4,293	16.9	16.5

	Counties with Average Population <10,000				Counties with Average Population 10,000 to 20,000			
	County	Number	Crude <sup>1</sup>	Adjusted <sup>1,2</sup>	County	Number	Crude <sup>1</sup>	Adjusted <sup>1,2</sup>
<b>Group Totals</b>								
Number:	337							
Crude:	26.9							
Adjusted:	28.5							
	Adair	24	32.2	32.0	Lucas	28	34.3	33.4
	Adams	12	29.2	35.7	Monroe	24	32.8	36.0
	Audubon	12	19.0	17.1	Osceola	14	21.8	24.0
	Clarke	22	29.6	33.1	Pocahontas	19	23.1	25.8
	Davis	30	39.7	39.6	Ringgold	12	24.8	23.9
	Decatur	19	25.8	24.1	Taylor	14	21.9	25.1
	Fremont	20	27.6	30.8	Van Buren	19	27.2	27.2
	Howard	13	14.8	17.0	Wayne	25	40.3	49.2
	Ida	19	25.8	31.0	Worth	11	15.6	15.4

	Counties with Average Population >20,000				MSA Counties			
	County	Number	Crude	Adjusted	County	Number	Crude	Adjusted
<b>Group Totals</b>								
Number:	1,404							
Crude:	22.5							
Adjusted:	22.6							
	Allamakee	35	27.8	29.4	Polk	366	11.8	11.7
	Appanoose	30	24.4	25.9	Pottawattamie	115	15.2	15.3
	Buena Vista	34	19.0	16.6	Scott	142	10.1	10.3
	Butler	24	17.0	18.3	Warren	33	9.6	9.6
	Calhoun	16	15.5	17.8	Woodbury	116	12.8	12.5
	Cass	30	22.3	24.0				
	Cedar	35	22.0	23.0				
	Cherokee	27	21.9	22.0				
	Chickasaw	28	23.3	25.1				
	Clay	28	17.7	18.5				
	Clayton	50	29.5	29.8				
	Crawford	40	26.9	25.7				
	Delaware	25	15.2	15.9				
	Dickinson	26	18.6	17.3				
	Emmet	22	21.7	22.0				
	Floyd	30	20.0	18.7				
	Franklin	22	22.0	22.1				
	Greene	19	21.0	23.4				
	Grundy	18	16.5	18.0				
	Guthrie	14	13.8	15.4				
	Hamilton	34	23.5	22.4				
	Hancock	20	18.2	17.8				
	Hardin	33	19.6	17.3				
	Harrison	48	35.6	36.8				

	Counties with Average Population >20,000				MSA Counties			
	County	Number	Crude	Adjusted	County	Number	Crude	Adjusted
<b>Group Totals</b>								
Number:	1,199							
Crude:	17.8							
Adjusted:	17.2							
	Benton	36	16.8	17.2	Mahaska	45	23.1	23.2
	Boone	38	16.5	16.2	Marion	58	21.0	20.7
	Bremer	35	16.8	15.5	Marshall	80	23.2	23.5
	Buchanan	32	16.9	17.6	Muscatine	67	18.2	18.0
	Carroll	43	22.2	23.1	Plymouth	34	15.7	16.4
	Cerro Gordo	65	15.5	15.5	Sioux	45	16.2	15.2
	Clinton	82	18.0	17.7	Story	76	11.3	10.6
	Des Moines	61	15.9	16.1	Wapello	74	23.0	23.8
	Fayette	43	21.8	21.8	Washington	36	19.6	20.4
	Jackson	44	24.3	24.9	Webster	59	16.6	16.4
	Jasper	46	14.5	15.0	Winneshek	19	10.1	8.9
	Lee	81	23.2	23.8				

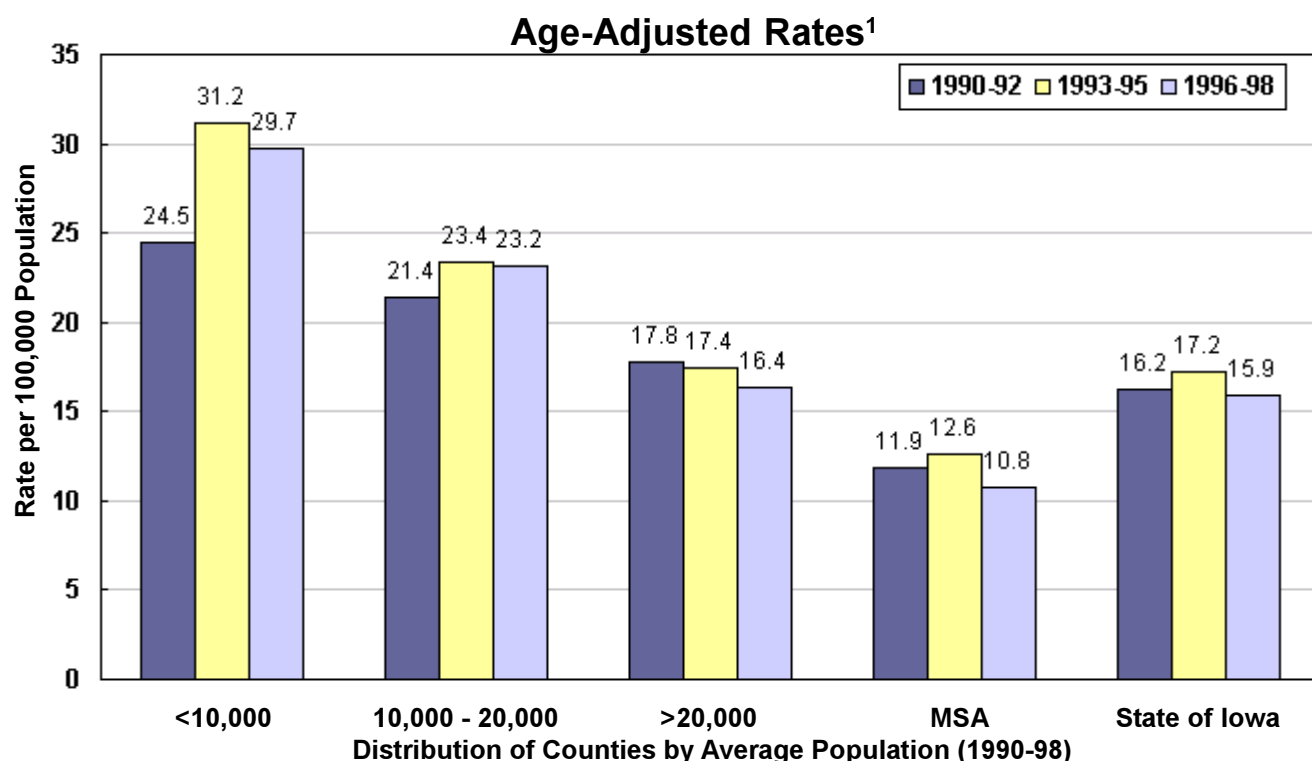
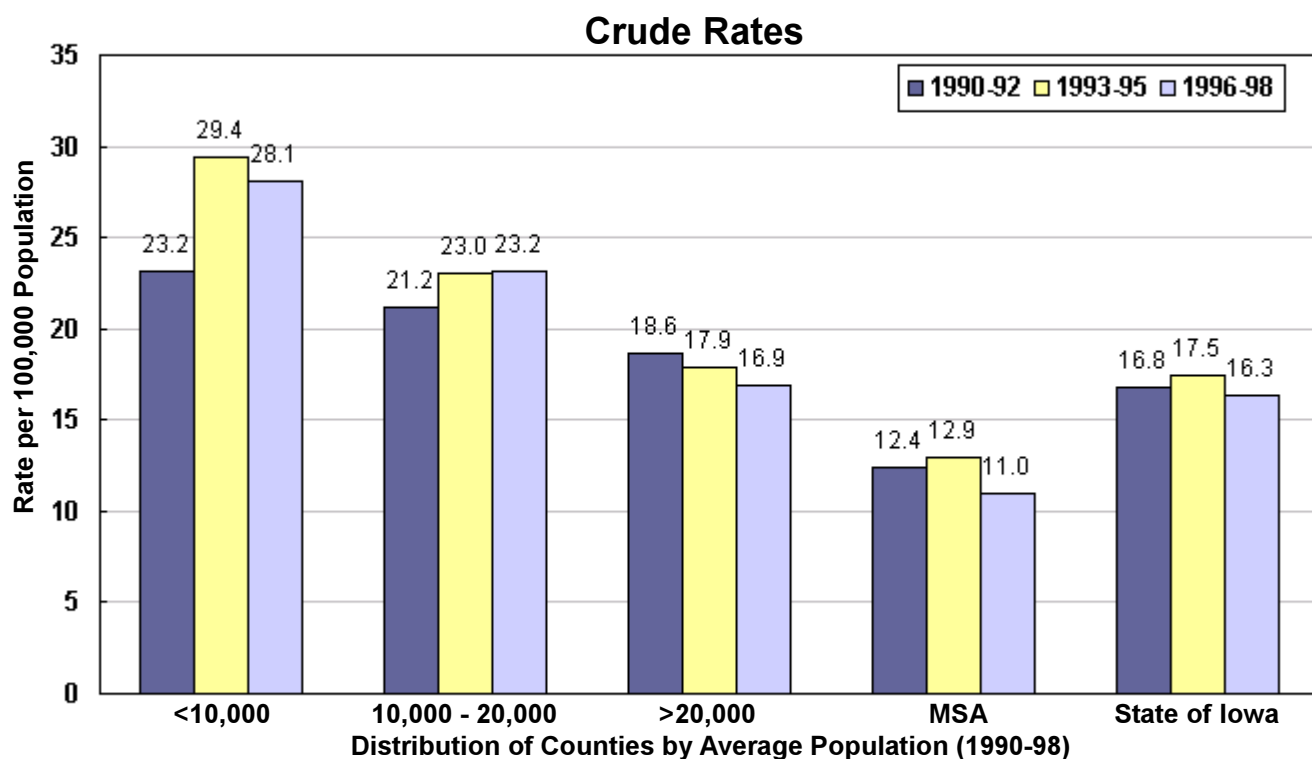
	Counties with Average Population >20,000				MSA Counties			
	County	Number	Crude	Adjusted	County	Number	Crude	Adjusted
<b>Group Totals</b>								
Number:	1,353							
Crude:	12.1							
Adjusted:	11.8							
	Black Hawk	175	15.8	15.3				
	Dallas	69	23.3	25.0				
	Dubuque	89	11.3	11.1				
	Johnson	70	7.8	7.9				
	Linn	178	11.2	11.1				

<sup>1</sup>Rates per 100,000 population

<sup>2</sup>Adjusted to Year 2000 US population

Source: IDPH Vital Records via  
Iowa Cancer Registry, The University of Iowa

## Motor Vehicle Traffic Mortality by County Group 1990-98



<sup>1</sup>Adjusted to Year 2000 US population

## Suicide Mortality 1990-1998

TOTAL	Number	Crude <sup>1</sup>	Adjusted <sup>1,2</sup>
State of Iowa	2,927	11.5	11.4

	County				County			
	Number	Crude <sup>1</sup>	Adjusted <sup>1,2</sup>		Number	Crude <sup>1</sup>	Adjusted <sup>1,2</sup>	
<b>Counties with Average Population &lt;10,000</b>	Adair	10	13.4	12.4	Lucas	14	17.2	17.1
	Adams	3	7.3	8.7	Monroe	15	20.5	21.3
	Audubon	9	14.3	14.2	Osceola	7	10.9	10.3
	Clarke	11	14.8	14.6	Pocahontas	12	14.6	16.1
	Davis	9	11.9	11.3	Ringgold	7	14.5	12.1
	Decatur	14	19.0	17.8	Taylor	10	15.6	12.2
	Fremont	9	12.4	12.0	Van Buren	5	7.2	8.3
	Howard	5	5.7	6.9	Wayne	9	14.5	13.6
	Ida	7	9.5	9.1	Worth	12	17.0	19.5
	<b>Group Totals</b>							
Number:	168							
Crude:	13.4							
Adjusted:	13.3							

	County				County			
	Number	Crude	Adjusted		Number	Crude	Adjusted	
<b>Counties with Average Population 10,000 to 20,000</b>	Allamakee	15	11.9	11.9	Henry	15	8.5	7.8
	Appanoose	15	12.2	11.3	Humboldt	15	15.9	17.3
	Buena Vista	16	8.9	8.8	Iowa	15	11.1	10.6
	Butler	10	7.1	6.7	Jefferson	29	19.3	19.0
	Calhoun	12	11.6	11.3	Jones	26	14.5	13.8
	Cass	12	8.9	9.5	Keokuk	17	16.3	16.2
	Cedar	18	11.3	11.6	Kossuth	9	5.5	5.1
	Cherokee	22	17.8	18.2	Louisa	17	16.1	16.2
	Chickasaw	14	11.7	12.5	Lyon	7	6.5	5.5
	Clay	11	6.9	6.3	Madison	14	11.8	11.7
	Clayton	27	15.9	15.3	Mills	14	11.4	12.0
	Crawford	12	8.1	8.4	Mitchell	14	14.1	12.7
	Delaware	19	11.5	13.1	Monona	11	12.1	14.9
	Dickinson	16	11.5	12.2	Montgomery	14	13.0	12.0
	Emmet	11	10.8	9.9	O'Brien	16	11.7	12.8
	Floyd	21	14.0	12.5	Page	15	9.8	9.6
	Franklin	7	7.0	8.1	Palo Alto	7	7.5	7.8
	Greene	10	11.0	11.0	Poweshiek	20	11.7	11.5
	Grundy	14	12.8	12.4	Sac	13	12.0	13.0
	Guthrie	15	14.8	13.0	Shelby	15	12.7	12.4
Hamilton	21	14.5	13.9	Tama	24	15.1	14.0	
Hancock	10	9.1	9.1	Union	20	17.7	17.5	
Hardin	14	8.3	7.7	Winnebago	6	5.6	6.3	
Harrison	14	10.4	10.1	Wright	10	7.8	7.0	
<b>Group Totals</b>								
Number:	719							
Crude:	11.5							
Adjusted:	11.3							

	County				County			
	Number	Crude	Adjusted		Number	Crude	Adjusted	
<b>Counties with Average Population &gt;20,000</b>	Benton	22	10.2	10.0	Mahaska	16	8.2	8.0
	Boone	26	11.3	11.2	Marion	24	8.7	9.3
	Bremer	26	12.5	11.8	Marshall	45	13.0	13.0
	Buchanan	28	14.7	15.5	Muscatine	45	12.3	12.1
	Carroll	23	11.9	11.6	Plymouth	17	7.8	8.2
	Cerro Gordo	46	11.0	11.2	Sioux	10	3.6	3.6
	Clinton	54	11.8	11.5	Story	60	9.0	9.6
	Des Moines	60	15.7	15.1	Wapello	40	12.4	12.2
	Fayette	20	10.1	10.1	Washington	24	13.1	12.6
	Jackson	30	16.6	17.2	Webster	43	12.1	12.1
	Jasper	29	9.1	8.8	Winneshek	16	8.5	8.8
	Lee	44	12.6	12.9				
	<b>Group Totals</b>							
Number:	748							
Crude:	11.1							
Adjusted:	11.0							

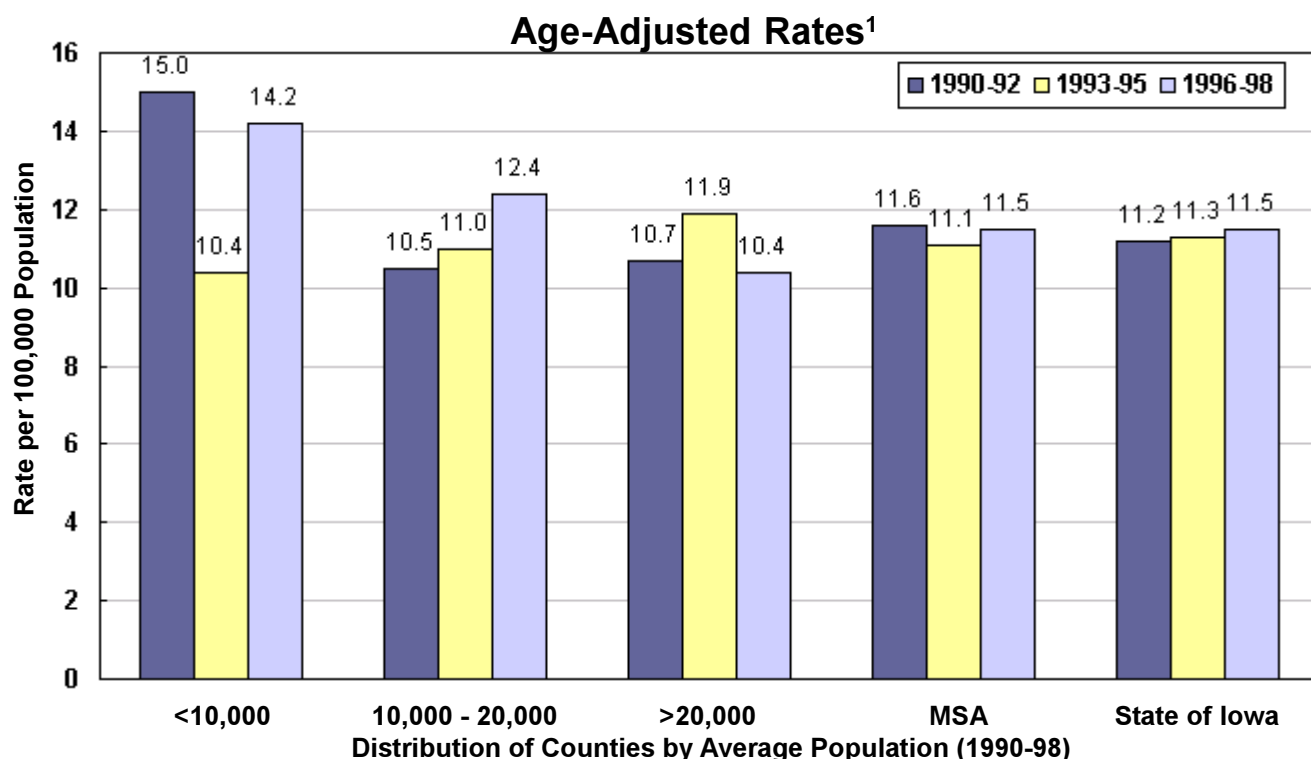
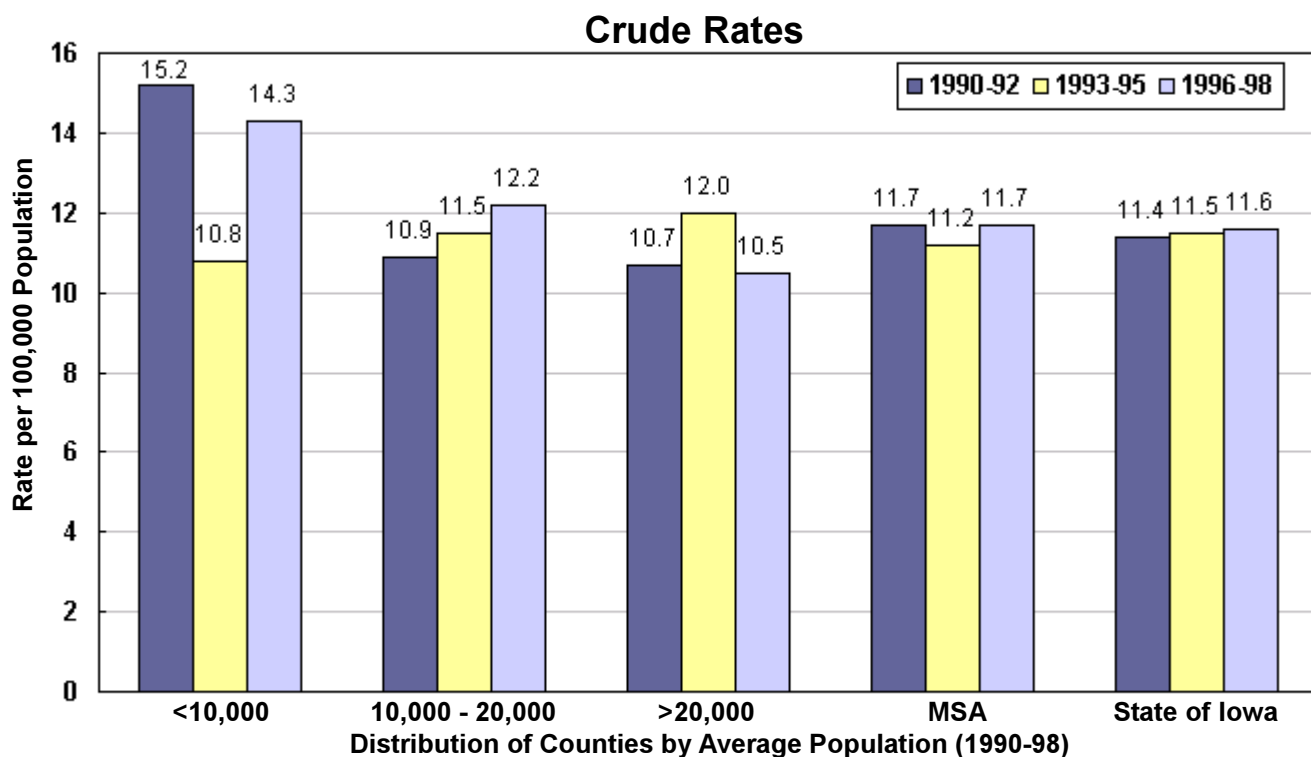
	County				County			
	Number	Crude	Adjusted		Number	Crude	Adjusted	
<b>MSA Counties</b>	Black Hawk	123	11.1	11.0	Polk	377	12.1	12.1
	Dallas	37	12.5	12.4	Pottawattamie	111	14.7	15.2
	Dubuque	86	10.9	11.0	Scott	155	11.1	11.4
	Johnson	86	9.6	9.1	Warren	33	9.6	9.7
	Linn	190	12.0	11.8	Woodbury	94	10.4	10.5
	<b>Group Totals</b>							
Number:	1,292							
Crude:	11.5							
Adjusted:	11.4							

<sup>1</sup>Rates per 100,000 population

<sup>2</sup>Adjusted to Year 2000 US population

Source: IDPH Vital Records via Iowa Cancer Registry, The University of Iowa

## Suicide Mortality by County Group 1990-98



<sup>1</sup>Adjusted to Year 2000 US population

## Firearms Mortality 1990-1998

TOTAL	Number	Crude <sup>1</sup>	Adjusted <sup>1,2</sup>
State of Iowa	1,977	7.8	7.6

	County				County			
	Number	Crude <sup>1</sup>	Adjusted <sup>1,2</sup>		Number	Crude <sup>1</sup>	Adjusted <sup>1,2</sup>	
<b>Counties with Average Population &lt;10,000</b>	Adair	9	12.1	11.5	Lucas	10	12.3	12.1
	Adams	4	9.7	12.3	Monroe	7	9.6	9.2
	Audubon	6	9.5	8.1	Osceola	3	4.7	4.3
	Clarke	11	14.8	16.2	Pocahontas	9	11.0	12.5
	Davis	10	13.2	12.6	Ringgold	6	12.4	9.5
	Decatur	14	19.0	19.7	Taylor	9	14.1	11.4
	Fremont	8	11.1	11.0	Van Buren	7	10.0	10.7
	Howard	5	5.7	6.9	Wayne	6	9.7	9.7
	Ida	3	4.1	4.9	Worth	6	8.5	9.7
	<b>Group Totals</b>							
Number:	133							
Crude:	10.6							
Adjusted:	10.7							

	County				County			
	Number	Crude	Adjusted		Number	Crude	Adjusted	
<b>Counties with Average Population 10,000 to 20,000</b>	Allamakee	12	9.5	10.2	Henry	12	6.8	6.2
	Appanoose	12	9.8	9.2	Humboldt	9	9.5	10.9
	Buena Vista	11	6.1	6.1	Iowa	13	9.6	9.4
	Butler	8	5.7	4.9	Jefferson	22	14.6	16.2
	Calhoun	7	6.8	6.3	Jones	15	8.3	8.1
	Cass	12	8.9	9.0	Keokuk	14	13.4	13.9
	Cedar	16	10.1	10.1	Kossuth	6	3.7	3.7
	Cherokee	11	8.9	9.2	Louisa	10	9.5	9.3
	Chickasaw	6	5.0	5.4	Lyon	4	3.7	3.7
	Clay	5	3.2	3.0	Madison	12	10.1	9.6
	Clayton	22	13.0	12.7	Mills	11	8.9	9.6
	Crawford	8	5.4	5.1	Mitchell	5	5.0	3.3
	Delaware	11	6.7	7.8	Monona	10	11.0	12.7
	Dickinson	10	7.2	8.4	Montgomery	12	11.2	10.3
	Emmet	8	7.9	7.8	O'Brien	14	10.2	11.2
	Floyd	13	8.6	8.2	Page	10	6.6	6.1
	Franklin	5	5.0	5.9	Palo Alto	5	5.4	5.1
	Greene	5	5.5	6.9	Poweshiek	11	6.5	6.1
	Grundy	9	8.2	9.0	Sac	7	6.4	7.4
	Guthrie	10	9.9	9.3	Shelby	11	9.3	9.2
Hamilton	15	10.4	9.7	Tama	18	11.4	11.0	
Hancock	10	9.1	9.3	Union	8	7.1	7.6	
Hardin	12	7.1	5.9	Winnebago	5	4.6	5.0	
Harrison	14	10.4	10.1	Wright	7	5.5	5.0	
<b>Group Totals</b>								
Number:	503							
Crude:	8.1							
Adjusted:	8.0							

	County				County			
	Number	Crude	Adjusted		Number	Crude	Adjusted	
<b>Counties with Average Population &gt;20,000</b>	Benton	9	4.2	4.0	Mahaska	13	6.7	6.6
	Boone	14	6.1	5.9	Marion	24	8.7	9.0
	Bremer	11	5.3	5.1	Marshall	33	9.6	9.7
	Buchanan	20	10.5	10.9	Muscatine	29	7.9	7.8
	Carroll	15	7.7	7.3	Plymouth	10	4.6	4.9
	Cerro Gordo	26	6.2	6.4	Sioux	7	2.5	2.3
	Clinton	35	7.7	7.4	Story	29	4.3	4.7
	Des Moines	46	12.0	11.6	Wapello	37	11.5	11.2
	Fayette	11	5.6	5.9	Washington	13	7.1	6.7
	Jackson	14	7.7	7.5	Webster	27	7.6	7.7
	Jasper	17	5.4	5.0	Winneshek	8	4.2	4.2
	Lee	33	9.4	9.6				
	<b>Group Totals</b>							
Number:	481							
Crude:	7.1							
Adjusted:	7.0							

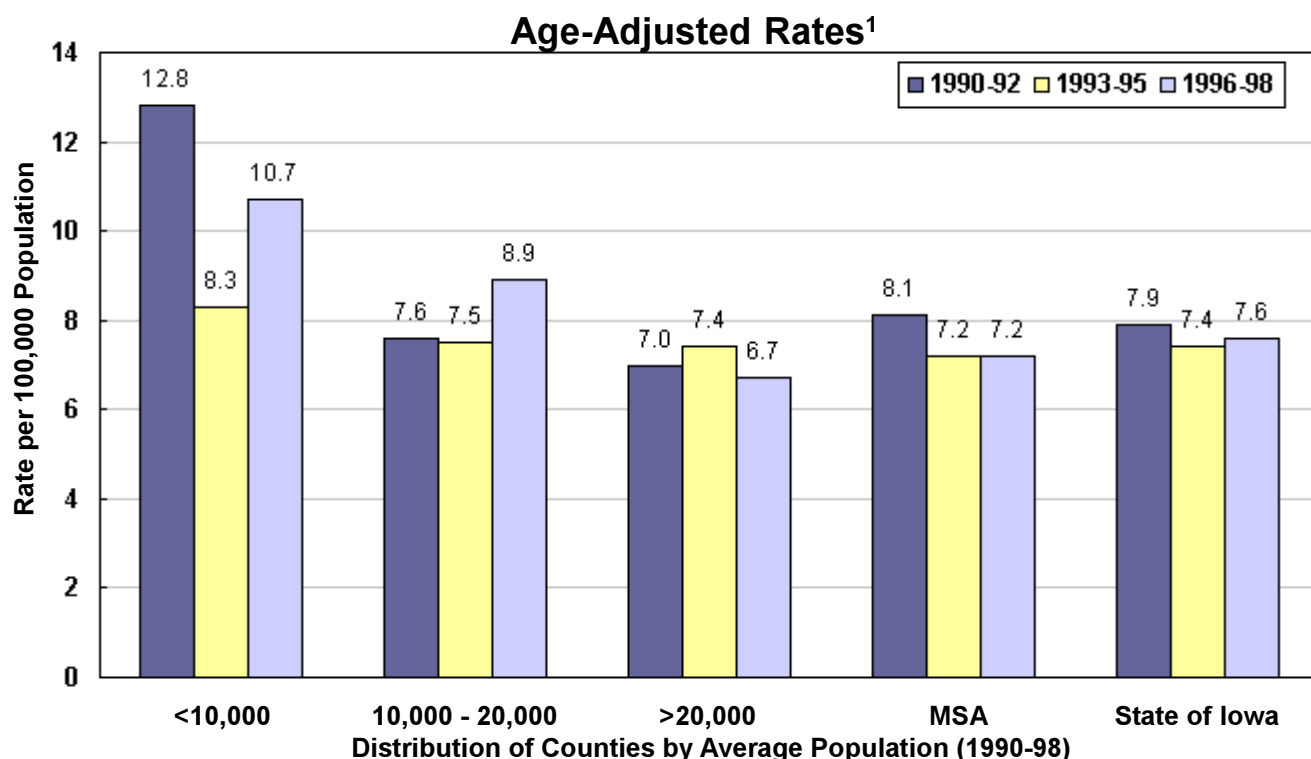
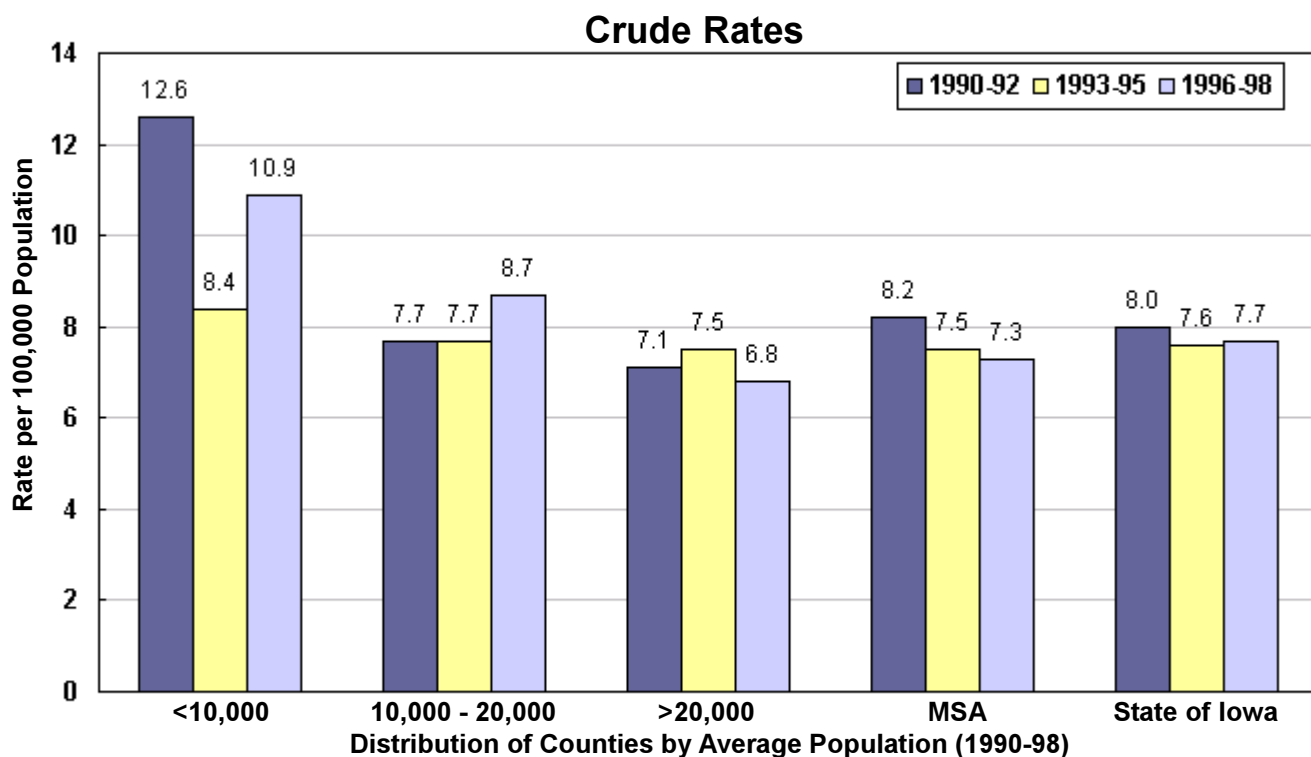
	County				County			
	Number	Crude	Adjusted		Number	Crude	Adjusted	
<b>MSA Counties</b>	Black Hawk	88	7.9	7.8	Polk	280	9.0	8.9
	Dallas	32	10.8	10.8	Pottawattamie	78	10.3	10.6
	Dubuque	58	7.3	7.3	Scott	82	5.9	5.9
	Johnson	44	4.9	4.9	Warren	28	8.1	8.2
	Linn	107	6.7	6.6	Woodbury	63	6.9	6.9
	<b>Group Totals</b>							
Number:	860							
Crude:	7.7							
Adjusted:	7.5							

<sup>1</sup>Rates per 100,000 population

<sup>2</sup>Adjusted to Year 2000 US population

Source: IDPH Vital Records via Iowa Cancer Registry, The University of Iowa

## Firearms Mortality by County Group 1990-98



<sup>1</sup>Adjusted to Year 2000 US population

## Falls Mortality 1990-1998

TOTAL	Number	Crude <sup>1</sup>	Adjusted <sup>1,2</sup>
State of Iowa	1,960	7.7	6.3

	County				County							
	Number	Crude <sup>1</sup>	Adjusted <sup>1,2</sup>	Number	Crude <sup>1</sup>	Adjusted <sup>1,2</sup>	Number	Crude <sup>1</sup>	Adjusted <sup>1,2</sup>			
<b>Counties with Average Population &lt;10,000</b>	Adair	12	16.1	7.3	Lucas	7	8.6	4.9	Monroe	5	6.8	4.1
	Adams	11	26.8	13.6	Osceola	*	*	*	Pocahontas	10	12.2	7.2
	Audubon	7	11.1	5.5	Ringgold	4	8.3	4.1	Taylor	4	6.3	2.8
	Clarke	8	10.8	5.9	Van Buren	8	11.5	7.4	Wayne	11	17.7	7.2
	Davis	8	10.6	6.9	Worth	9	12.7	7.0				
	Decatur	11	14.9	10.5								
	Fremont	5	6.9	3.9								
	Howard	8	9.1	4.6								
	Ida	13	17.6	9.1								
	<b>Group Totals</b>											
Number:	141											
Crude:	11.3											
Adjusted:	6.1											

	County				County							
	Number	Crude	Adjusted	Number	Crude	Adjusted	Number	Crude	Adjusted			
<b>Counties with Average Population 10,000 to 20,000</b>	Allamakee	11	8.7	5.6	Henry	13	7.3	5.2	Humboldt	11	11.7	6.9
	Appanoose	14	11.4	7.3	Iowa	9	6.6	4.3	Jefferson	9	6.0	5.4
	Buena Vista	9	5.0	3.3	Jones	12	6.7	5.0	Keokuk	16	15.4	8.0
	Butler	11	7.8	4.9	Kossuth	12	7.4	4.3	Louisa	6	5.7	4.5
	Calhoun	15	14.5	8.1	Lyon	8	7.4	4.5	Madison	12	10.1	7.5
	Cass	13	9.7	5.2	Mills	7	5.7	5.5	Mitchell	6	6.1	3.6
	Cedar	18	11.3	7.9	Monona	9	9.9	6.1	Montgomery	21	19.5	9.4
	Cherokee	11	8.9	6.0	O'Brien	9	6.6	3.6	O'Brien	9	6.6	3.6
	Chickasaw	6	5.0	3.7	Page	14	9.2	5.0	Palo Alto	9	9.7	5.9
	Clay	10	6.3	4.3	Poweshiek	27	15.9	10.6	Sac	13	12.0	5.5
	Clayton	12	7.1	5.5	Shelby	7	5.9	3.0	Tama	11	6.9	4.3
	Crawford	13	8.7	6.0	Tama	11	6.9	4.3	Union	16	14.2	8.7
	Delaware	9	5.5	4.4	Union	16	14.2	8.7	Winnebago	5	4.6	3.1
	Dickinson	11	7.9	4.9	Wright	16	12.5	6.6				
	Emmet	9	8.9	4.9								
	Floyd	9	6.0	3.5								
	Franklin	7	7.0	4.9								
	Greene	9	9.9	5.1								
	Grundy	11	10.1	6.5								
	Guthrie	10	9.9	5.4								
Hamilton	8	5.5	3.6									
Hancock	7	6.4	4.5									
Hardin	18	10.7	5.4									
Harrison	16	11.9	6.9									

	County				County							
	Number	Crude	Adjusted	Number	Crude	Adjusted	Number	Crude	Adjusted			
<b>Counties with Average Population &gt;20,000</b>	Benton	12	5.6	4.8	Mahaska	25	12.8	9.2	Marion	26	9.4	7.1
	Boone	24	10.4	6.9	Marshall	40	11.6	8.3	Muscatine	24	6.5	6.0
	Bremer	12	5.8	5.1	Plymouth	9	4.1	2.8	Sioux	24	8.6	7.1
	Buchanan	14	7.4	6.9	Story	38	5.7	6.3	Wapello	28	8.7	6.4
	Carroll	18	9.3	6.5	Washington	30	16.4	10.0	Washington	30	16.4	10.0
	Cerro Gordo	17	4.1	3.1	Webster	60	16.9	11.0	Webster	60	16.9	11.0
	Clinton	29	6.3	5.2	Winnesiek	17	9.0	6.3	Winnesiek	17	9.0	6.3
	Des Moines	29	7.6	5.9								
	Fayette	19	9.6	7.5								
	Jackson	11	6.1	5.2								
	Jasper	29	9.1	7.2								
	Lee	22	6.3	5.0								

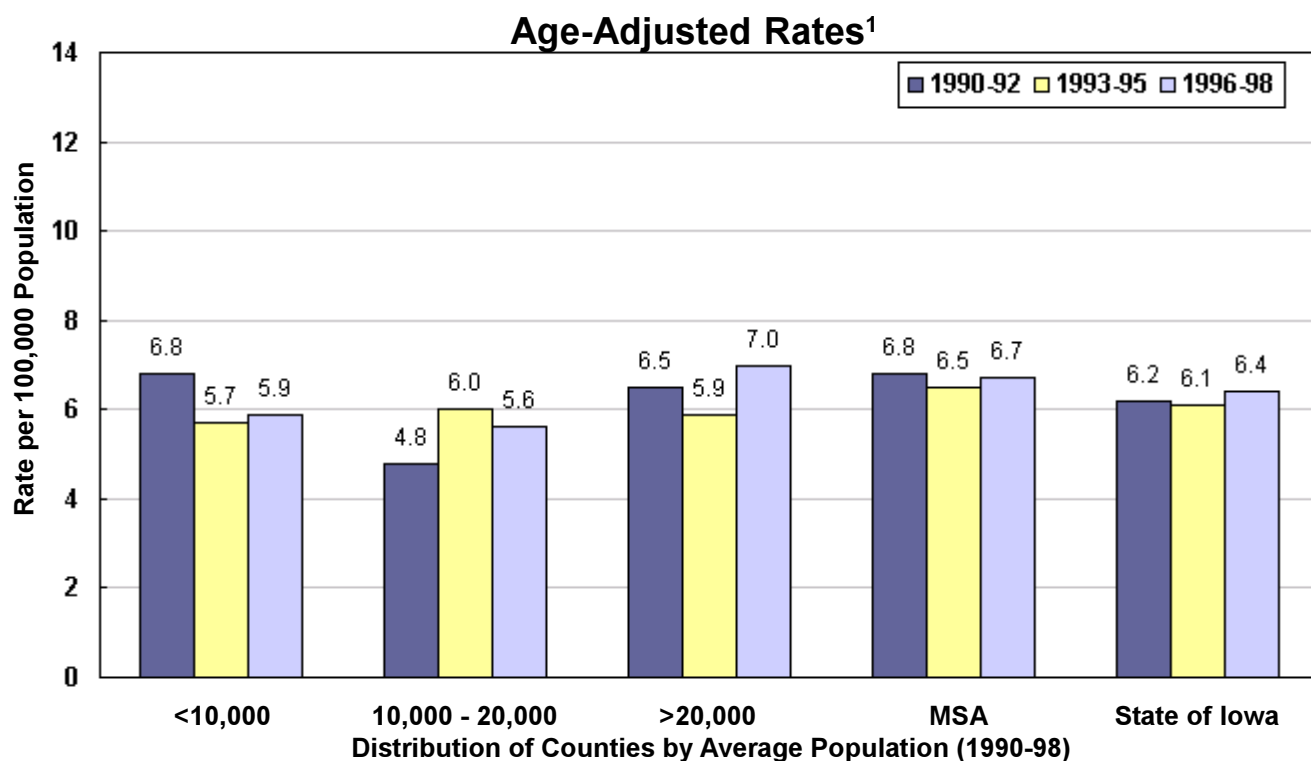
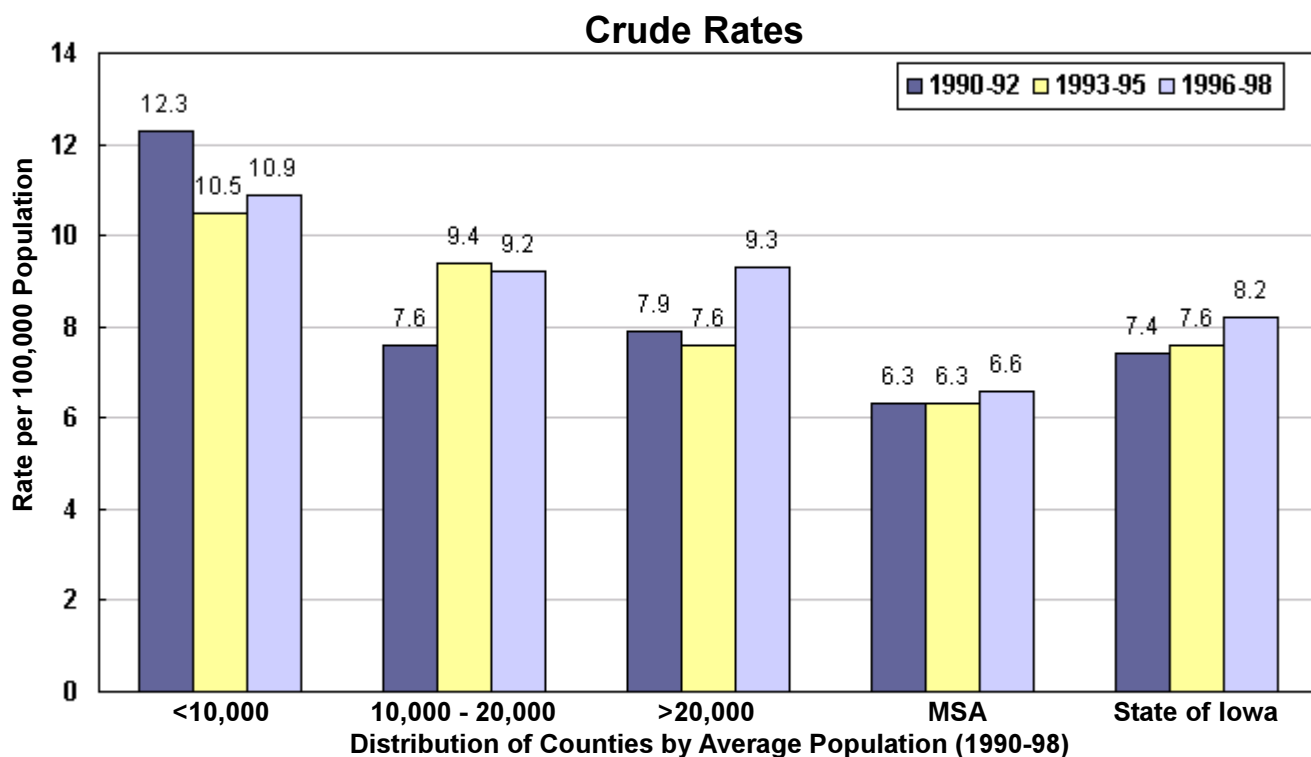
	County				County							
	Number	Crude	Adjusted	Number	Crude	Adjusted	Number	Crude	Adjusted			
<b>MSA Counties</b>	Black Hawk	75	6.8	6.5	Polk	264	8.5	9.5	Pottawattamie	40	5.3	5.2
	Dallas	17	5.7	5.1	Scott	60	4.3	4.9	Warren	26	7.5	7.9
	Dubuque	37	4.7	4.2	Woodbury	70	7.7	6.9				
	Johnson	30	3.3	4.9								
	Linn	98	6.2	6.3								
	<b>Group Totals</b>											
Number:	717											
Crude:	6.4											
Adjusted:	6.7											

<sup>1</sup>Rates per 100,000 population

<sup>2</sup>Adjusted to Year 2000 US population

Source: IDPH Vital Records via Iowa Cancer Registry, The University of Iowa

## Falls Mortality by County Group 1990-98



<sup>1</sup>Adjusted to Year 2000 US population

## Homicide Mortality 1990-1998

TOTAL	Number	Crude <sup>1</sup>	Adjusted <sup>1,2</sup>
State of Iowa	576	2.3	2.3

	County				County			
	Number	Crude <sup>1</sup>	Adjusted <sup>1,2</sup>		Number	Crude <sup>1</sup>	Adjusted <sup>1,2</sup>	
<b>Counties with Average Population &lt;10,000</b>	Adair	*	*	*	Lucas	*	*	*
	Adams	*	*	*	Monroe	*	*	*
	Audubon	*	*	*	Osceola	*	*	*
	Clarke	*	*	*	Pocahontas	*	*	*
	Davis	*	*	*	Ringgold	*	*	*
	Decatur	3	4.1	5.0	Taylor	*	*	*
	Fremont	*	*	*	Van Buren	*	*	*
	Howard	*	*	*	Wayne	*	*	*
	Ida	*	*	*	Worth	*	*	*
	<b>Group Totals</b>							
Number:	19							
Crude:	1.5							
Adjusted:	1.6							

	County				County			
	Number	Crude	Adjusted		Number	Crude	Adjusted	
<b>Counties with Average Population 10,000 to 20,000</b>	Allamakee	*	*	*	Henry	*	*	*
	Appanoose	*	*	*	Humboldt	*	*	*
	Buena Vista	*	*	*	Iowa	4	3.0	3.4
	Butler	*	*	*	Jefferson	3	2.0	2.5
	Calhoun	*	*	*	Jones	*	*	*
	Cass	*	*	*	Keokuk	*	*	*
	Cedar	5	3.1	3.3	Kossuth	*	*	*
	Cherokee	*	*	*	Louisa	*	*	*
	Chickasaw	*	*	*	Lyon	*	*	*
	Clay	*	*	*	Madison	3	2.5	2.6
	Clayton	*	*	*	Mills	*	*	*
	Crawford	*	*	*	Mitchell	*	*	*
	Delaware	*	*	*	Monona	*	*	*
	Dickinson	3	2.1	2.4	Montgomery	3	2.8	2.6
	Emmet	*	*	*	O'Brien	4	2.9	3.2
	Floyd	3	2.0	2.3	Page	*	*	*
	Franklin	3	3.0	3.0	Palo Alto	*	*	*
	Greene	*	*	*	Poweshiek	*	*	*
	Grundy	*	*	*	Sac	*	*	*
	Guthrie	*	*	*	Shelby	*	*	*
Hamilton	*	*	*	Tama	8	5.0	5.7	
Hancock	*	*	*	Union	3	2.7	2.8	
Hardin	6	3.6	3.6	Winnebago	*	*	*	
Harrison	*	*	*	Wright	*	*	*	

	County				County			
	Number	Crude	Adjusted		Number	Crude	Adjusted	
<b>Counties with Average Population &gt;20,000</b>	Benton	*	*	*	Mahaska	4	2.0	2.4
	Boone	3	1.3	1.3	Marion	6	2.2	2.1
	Bremer	*	*	*	Marshall	5	1.4	1.6
	Buchanan	*	*	*	Muscatine	8	2.2	2.1
	Carroll	*	*	*	Plymouth	*	*	*
	Cerro Gordo	8	1.9	2.1	Sioux	5	1.8	1.9
	Clinton	7	1.5	1.5	Story	6	0.9	1.1
	Des Moines	8	2.1	2.1	Wapello	9	2.8	3.0
	Fayette	*	*	*	Washington	*	*	*
	Jackson	*	*	*	Webster	13	3.7	3.9
	Jasper	*	*	*	Winneshek	*	*	*
	Lee	9	2.6	2.4				

	County				County			
	Number	Crude	Adjusted		Number	Crude	Adjusted	
<b>MSA Counties</b>	Black Hawk	33	3.0	2.9	Polk	157	5.0	4.9
	Dallas	7	2.4	2.6	Pottawattamie	36	4.8	4.7
	Dubuque	8	1.0	1.1	Scott	40	2.9	2.8
	Johnson	19	2.1	2.2	Warren	9	2.6	2.4
	Linn	33	2.1	2.0	Woodbury	30	3.3	3.4
	<b>Group Totals</b>							
Number:	372							
Crude:	3.3							
Adjusted:	3.2							

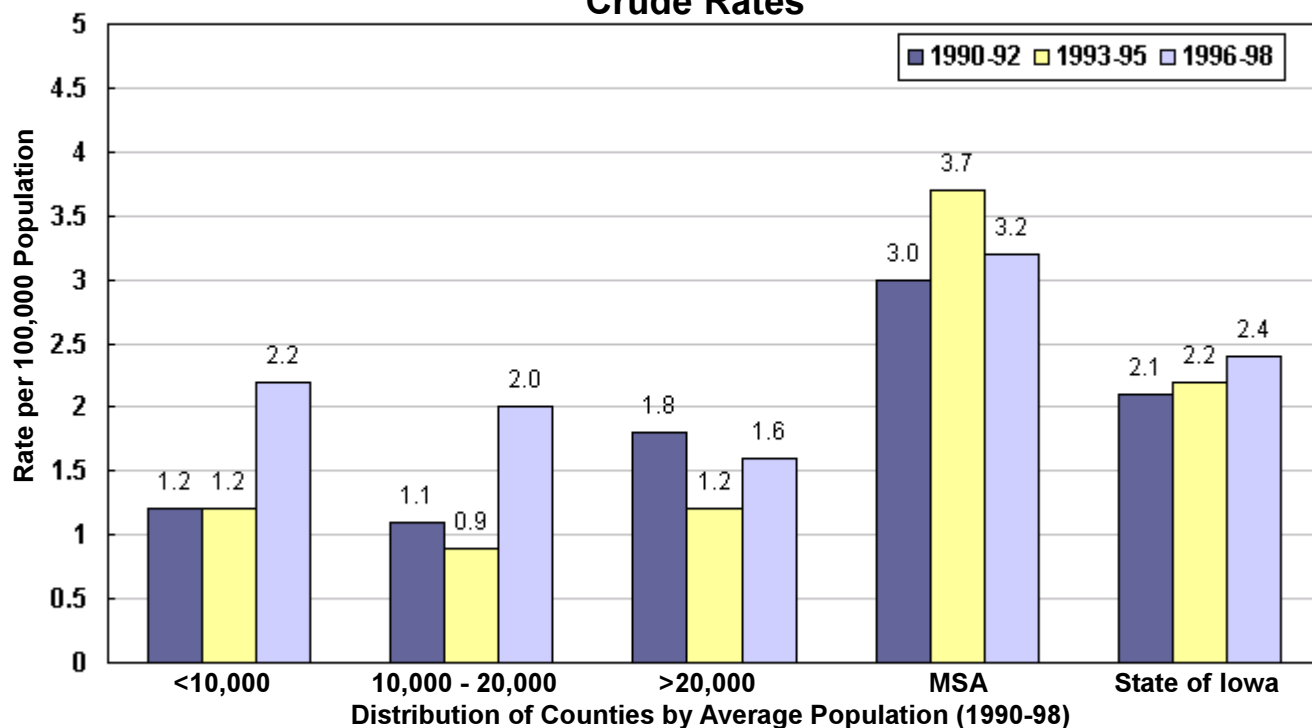
<sup>1</sup>Rates per 100,000 population

<sup>2</sup>Adjusted to Year 2000 US population

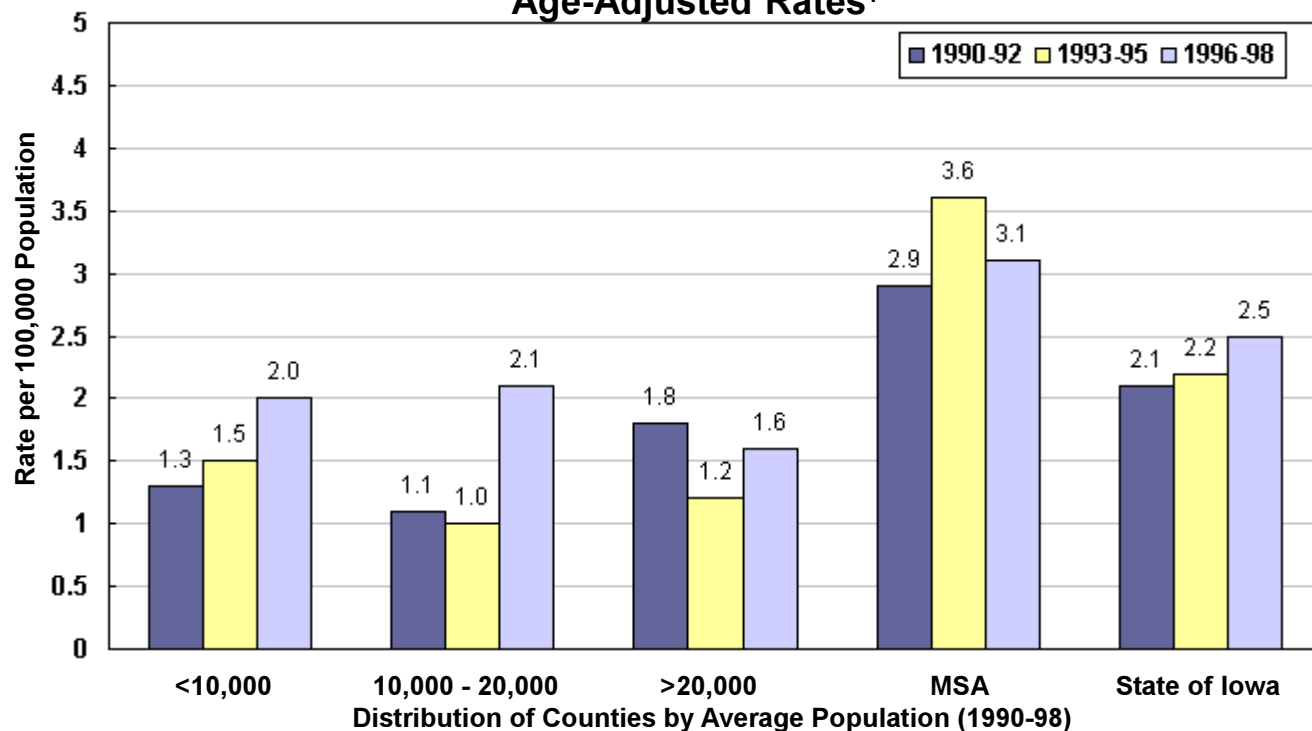
Source: IDPH Vital Records via Iowa Cancer Registry, The University of Iowa

## Homicide Mortality by County Group 1990-98

### Crude Rates



### Age-Adjusted Rates<sup>1</sup>



<sup>1</sup>Adjusted to Year 2000 US population

## Poisoning Mortality 1990-1998

TOTAL	Number	Crude <sup>1</sup>	Adjusted <sup>1,2</sup>
State of Iowa	357	1.4	1.4

Counties with Average Population <10,000					Counties with Average Population 10,000 to 20,000				
County	Number	Crude <sup>1</sup>	Adjusted <sup>1,2</sup>		County	Number	Crude <sup>1</sup>	Adjusted <sup>1,2</sup>	
Adair	*	*	*		Lucas	*	*	*	
Adams	*	*	*		Monroe	*	*	*	
Audubon	*	*	*		Osceola	*	*	*	
Clarke	*	*	*		Pocahontas	4	4.9	4.7	
Davis	*	*	*		Ringgold	*	*	*	
Decatur	5	6.8	6.2		Taylor	*	*	*	
Fremont	*	*	*		Van Buren	*	*	*	
Howard	*	*	*		Wayne	3	4.8	5.5	
Ida	*	*	*		Worth	*	*	*	
<b>Group Totals</b>					<b>Group Totals</b>				
Number:	23				Number:	68			
Crude:	1.8				Crude:	1.1			
Adjusted:	1.8				Adjusted:	1.0			

Counties with Average Population >20,000					MSA Counties				
County	Number	Crude	Adjusted		County	Number	Crude	Adjusted	
Allamakee	*	*	*		Black Hawk	16	1.4	1.4	
Appanoose	*	*	*		Dallas	3	1.0	0.9	
Buena Vista	*	*	*		Dubuque	3	0.4	0.4	
Butler	*	*	*		Johnson	12	1.3	1.4	
Calhoun	*	*	*		Linn	26	1.6	1.6	
Cass	3.2	2.2	1.3						
Cedar	*	*	*						
Cherokee	5	4.0	3.3						
Chickasaw	*	*	*						
Clay	3	1.9	1.9						
Clayton	*	*	*						
Crawford	*	*	*						
Delaware	*	*	*						
Dickinson	*	*	*						
Emmet	*	*	*						
Floyd	*	*	*						
Franklin	*	*	*						
Greene	*	*	*						
Grundy	*	*	*						
Guthrie	*	*	*						
Hamilton	*	*	*						
Hancock	3	2.7	2.3						
Hardin	5	3.0	3.1						
Harrison	*	*	*						
<b>Group Totals</b>					<b>Group Totals</b>				
Number:	89				Number:	177			
Crude:	1.3				Crude:	1.6			
Adjusted:	1.3				Adjusted:	1.6			

Counties with Average Population >20,000					Counties with Average Population >20,000				
County	Number	Crude	Adjusted		County	Number	Crude	Adjusted	
Benton	*	*	*		Mahaska	3	1.5	1.2	
Boone	*	*	*		Marion	3	1.1	1.1	
Bremer	*	*	*		Marshall	8	2.3	2.3	
Buchanan	4	2.1	2.3		Muscatine	4	1.1	1.1	
Carroll	3	1.5	1.9		Plymouth	4	1.8	2.2	
Cerro Gordo	6	1.4	1.4		Sioux	*	*	*	
Clinton	4	0.9	0.8		Story	9	1.3	1.3	
Des Moines	6	1.6	1.5		Wapello	8	2.5	2.6	
Fayette	8	4.1	3.8		Washington	*	*	*	
Jackson	*	*	*		Webster	*	*	*	
Jasper	6	1.9	1.9		Winneshek	*	*	*	
Lee	*	*	*						

Counties with Average Population >20,000					Counties with Average Population >20,000				
County	Number	Crude	Adjusted		County	Number	Crude	Adjusted	
Benton	*	*	*		Mahaska	3	1.5	1.2	
Boone	*	*	*		Marion	3	1.1	1.1	
Bremer	*	*	*		Marshall	8	2.3	2.3	
Buchanan	4	2.1	2.3		Muscatine	4	1.1	1.1	
Carroll	3	1.5	1.9		Plymouth	4	1.8	2.2	
Cerro Gordo	6	1.4	1.4		Sioux	*	*	*	
Clinton	4	0.9	0.8		Story	9	1.3	1.3	
Des Moines	6	1.6	1.5		Wapello	8	2.5	2.6	
Fayette	8	4.1	3.8		Washington	*	*	*	
Jackson	*	*	*		Webster	*	*	*	
Jasper	6	1.9	1.9		Winneshek	*	*	*	
Lee	*	*	*						

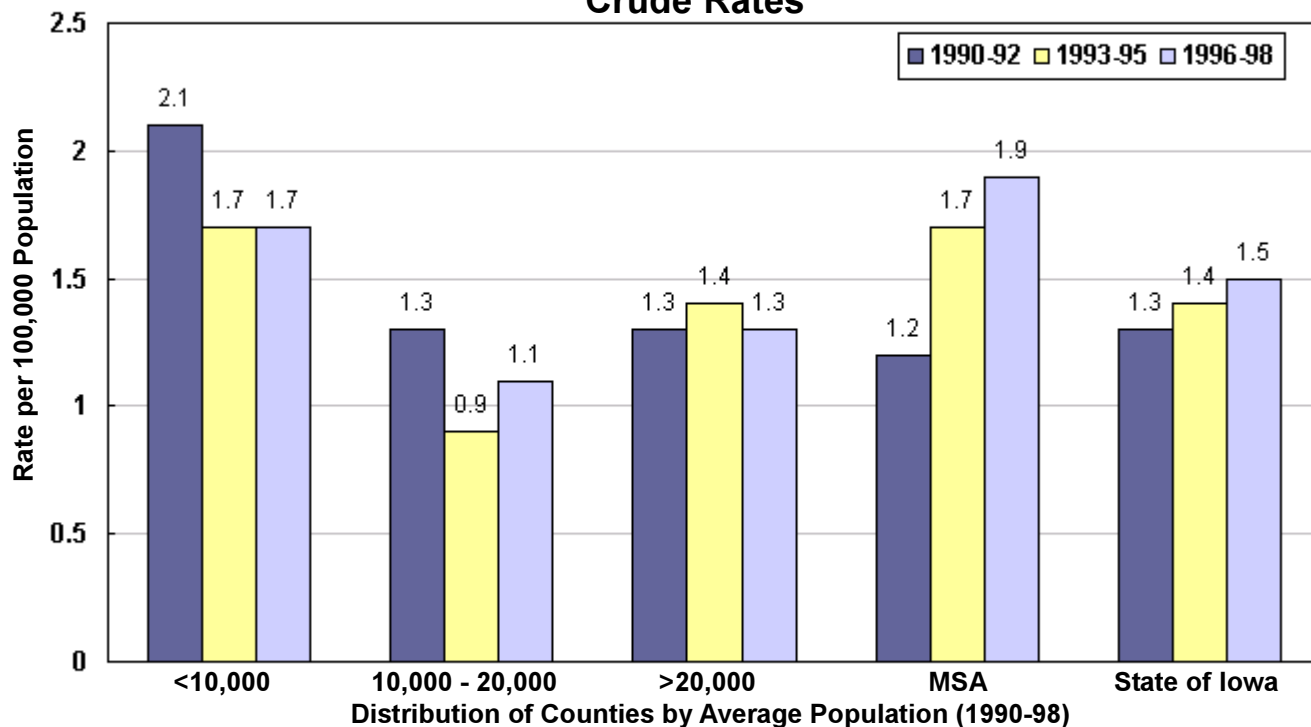
<sup>1</sup>Rates per 100,000 population

<sup>2</sup>Adjusted to Year 2000 US population

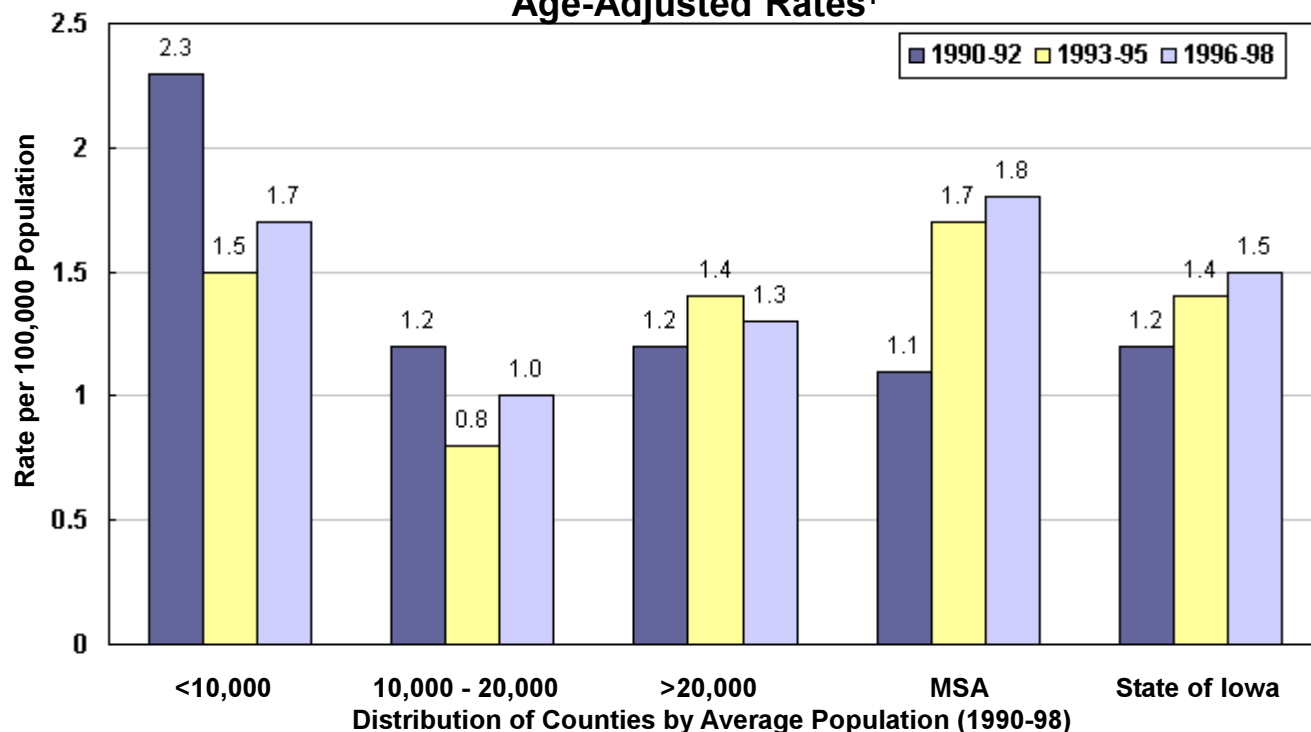
Source: IDPH Vital Records via Iowa Cancer Registry, The University of Iowa

## Poisoning Mortality by County Group 1990-98

### Crude Rates



### Age-Adjusted Rates<sup>1</sup>



<sup>1</sup>Adjusted to Year 2000 US population

## Burns Mortality 1990-1998

TOTAL	Number	Crude <sup>1</sup>	Adjusted <sup>1,2</sup>
State of Iowa	341	1.3	1.3

	County				County							
	Number	Crude <sup>1</sup>	Adjusted <sup>1,2</sup>	Number	Crude <sup>1</sup>	Adjusted <sup>1,2</sup>	Number	Crude <sup>1</sup>	Adjusted <sup>1,2</sup>			
<b>Counties with Average Population &lt;10,000</b>	Adair	*	*	*	Lucas	5	6.1	4.9	Monroe	3	4.1	2.8
	Adams	*	*	*	Osceola	*	*	*	Pocahontas	*	*	*
	Audubon	*	*	*	Ringgold	*	*	*	Taylor	*	*	*
	Clarke	*	*	*	Van Buren	3	4.3	4.6	Wayne	*	*	*
	Davis	*	*	*	Worth	*	*	*				
	Decatur	3	4.1	3.4								
	Fremont	*	*	*								
	Howard	*	*	*								
	Ida	*	*	*								
	<b>Group Totals</b>											
Number:	26											
Crude:	2.1											
Adjusted:	1.7											

	County				County							
	Number	Crude	Adjusted	Number	Crude	Adjusted	Number	Crude	Adjusted			
<b>Counties with Average Population 10,000 to 20,000</b>	Allamakee	3	2.4	2.6	Henry	*	*	*	Humboldt	*	*	*
	Appanoose	*	*	*	Iowa	3	2.2	2.1	Jefferson	*	*	*
	Buena Vista	4	2.2	2.0	Jones	3	1.7	1.7	Keokuk	3	2.9	2.5
	Butler	*	*	*	Kossuth	*	*	*	Louisa	5	4.7	4.7
	Calhoun	3	2.9	1.9	Lyon	*	*	*	Madison	6	5.1	4.6
	Cass	5	3.7	3.0	Mills	*	*	*	Mitchell	*	*	*
	Cedar	*	*	*	Monona	*	*	*	Montgomery	5	4.7	4.8
	Cherokee	3	2.4	2.0	O'Brien	*	*	*	Page	3	2.0	1.7
	Chickasaw	5	4.2	3.6	Palo Alto	*	*	*	Poweshiek	*	*	*
	Clay	*	*	*	Sac	6	5.5	6.1	Shelby	*	*	*
Clayton	*	*	*	Tama	3	1.9	1.8	Union	4	3.5	3.6	
Crawford	*	*	*	Winnebago	6	5.6	4.4	Wright	*	*	*	
Delaware	*	*	*									
Dickinson	*	*	*									
Emmet	*	*	*									
Floyd	*	*	*									
Franklin	3	3.0	2.3									
Greene	3	3.3	3.8									
Grundy	*	*	*									
Guthrie	4	3.9	2.4									
Hamilton	3	2.1	1.8									
Hancock	*	*	*									
Hardin	*	*	*									
Harrison	*	*	*									

	County				County							
	Number	Crude	Adjusted	Number	Crude	Adjusted	Number	Crude	Adjusted			
<b>Counties with Average Population &gt;20,000</b>	Benton	3	1.4	1.2	Mahaska	7	3.6	3.3	Marion	4	1.4	1.2
	Boone	*	*	*	Marshall	5	1.4	1.3	Muscatine	*	*	*
	Bremer	*	*	*	Plymouth	*	*	*	Sioux	3	1.1	0.9
	Buchanan	*	*	*	Story	5	0.7	0.9	Wapello	8	2.5	2.3
	Carroll	*	*	*	Washington	4	2.2	2.2	Webster	6	1.7	1.7
	Cerro Gordo	4	1.0	0.9	Winneshek	4	2.1	1.9				
	Clinton	8	1.8	1.8								
	Des Moines	6	1.6	1.5								
	Fayette	*	*	*								
	Jackson	3	1.7	1.5								
Jasper	7	2.2	1.9									
Lee	11	3.1	3.3									

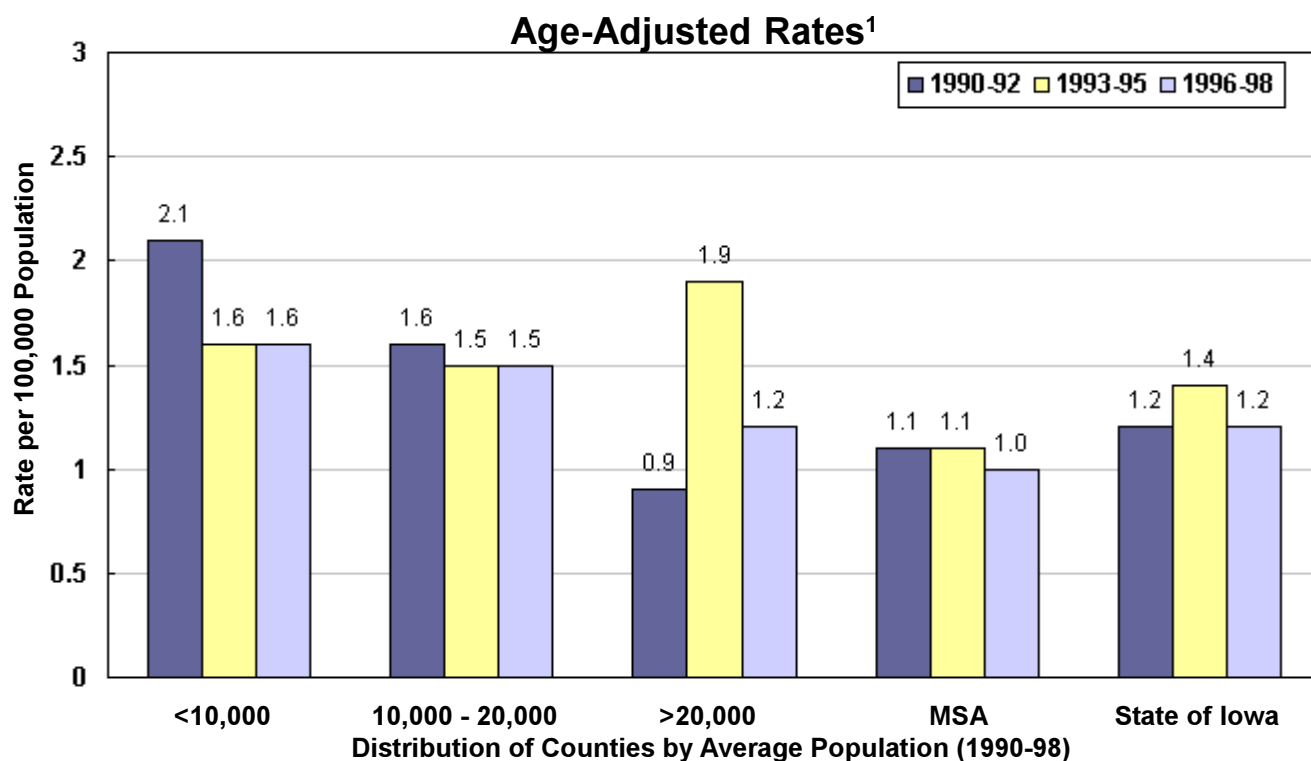
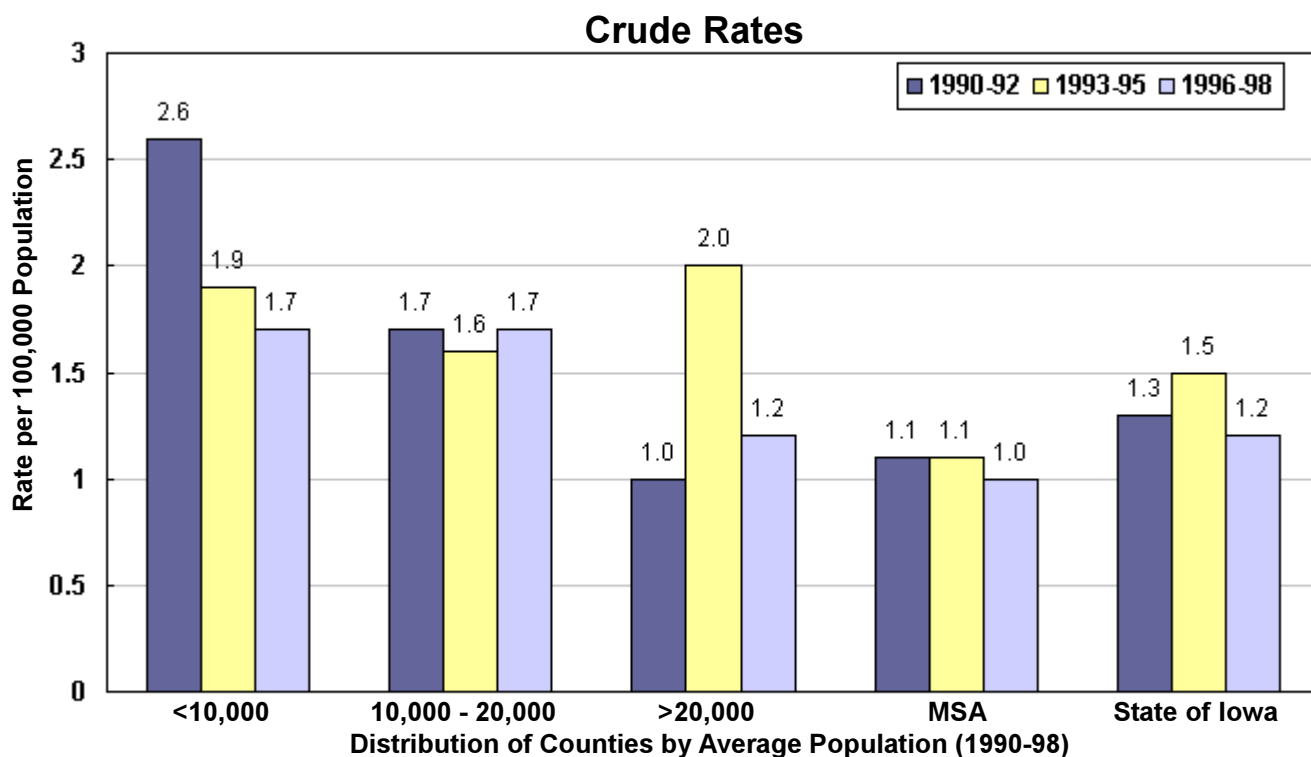
	County				County							
	Number	Crude	Adjusted	Number	Crude	Adjusted	Number	Crude	Adjusted			
<b>MSA Counties</b>	Black Hawk	13	1.2	1.2	Polk	34	1.1	1.2	Pottawattamie	6	0.8	0.8
	Dallas	3	1.0	1.0	Scott	14	1.0	1.0	Warren	*	*	*
	Dubuque	6	0.8	0.7	Woodbury	13	1.4	1.4				
	Johnson	13	1.4	1.8								
	Linn	16	1.0	1.0								
	<b>Group Totals</b>											
Number:	118											
Crude:	1.1											
Adjusted:	1.1											

<sup>1</sup>Rates per 100,000 population

<sup>2</sup>Adjusted to Year 2000 US population

Source: IDPH Vital Records via Iowa Cancer Registry, The University of Iowa

## Burns Mortality by County Group 1990-98



<sup>1</sup>Adjusted to Year 2000 US population

## Drowning Mortality 1990-1998

TOTAL	Number	Crude <sup>1</sup>	Adjusted <sup>1,2</sup>
State of Iowa	342	1.3	1.3

	County				County							
	Number	Crude <sup>1</sup>	Adjusted <sup>1,2</sup>	Number	Crude <sup>1</sup>	Adjusted <sup>1,2</sup>	Number	Crude <sup>1</sup>	Adjusted <sup>1,2</sup>			
<b>Counties with Average Population &lt;10,000</b>	Adair	*	*	*	Lucas	*	*	*	Monroe	*	*	*
	Adams	*	*	*	Osceola	*	*	*	Pocahontas	*	*	*
	Audubon	*	*	*	Ringgold	*	*	*	Taylor	*	*	*
	Clarke	*	*	*	Van Buren	*	*	*	Wayne	*	*	*
	Davis	3	4.0	3.6	Worth	*	*	*				
	Decatur	*	*	*								
	Fremont	*	*	*								
	Howard	3	3.4	3.0								
	Ida	*	*	*								
	<b>Group Totals</b>											
Number:	19											
Crude:	1.5											
Adjusted:	1.6											

	County				County							
	Number	Crude	Adjusted	Number	Crude	Adjusted	Number	Crude	Adjusted			
<b>Counties with Average Population 10,000 to 20,000</b>	Allamakee	*	*	*	Henry	*	*	*	Humboldt	*	*	*
	Appanoose	*	*	*	Iowa	*	*	*	Jefferson	*	*	*
	Buena Vista	*	*	*	Jones	3	1.7	1.6	Keokuk	*	*	*
	Butler	*	*	*	Keokuk	*	*	*	Kossuth	*	*	*
	Calhoun	*	*	*	Louisa	6	5.7	5.4	Lyon	*	*	*
	Cass	*	*	*	Madison	*	*	*	Mills	*	*	*
	Cedar	*	*	*	Mitchell	*	*	*	Monona	4	4.4	5.9
	Cherokee	*	*	*	Montgomery	5	4.7	4.7	O'Brien	*	*	*
	Chickasaw	*	*	*	Page	*	*	*	Palo Alto	*	*	*
	Clay	*	*	*	Poweshiek	*	*	*	Sac	*	*	*
	Clayton	*	*	*	Shelby	3	2.5	3.3	Tama	3	1.9	1.5
	Crawford	3	2.0	1.9	Union	*	*	*	Winnebago	*	*	*
	Delaware	4	2.4	2.2	Wright	*	*	*				
	Dickinson	3	2.1	2.9								
	Emmet	*	*	*								
	Floyd	*	*	*								
	Franklin	*	*	*								
	Greene	*	*	*								
	Grundy	*	*	*								
	Guthrie	*	*	*								
Hamilton	*	*	*									
Hancock	*	*	*									
Hardin	*	*	*									
Harrison	3	2.2	2.5									

	County				County							
	Number	Crude	Adjusted	Number	Crude	Adjusted	Number	Crude	Adjusted			
<b>Counties with Average Population &gt;20,000</b>	Benton	3	1.4	1.6	Mahaska	3	1.5	1.4	Marion	6	2.2	2.2
	Boone	*	*	*	Marshall	4	1.2	1.3	Muscatine	8	2.2	2.1
	Bremer	*	*	*	Plymouth	*	*	*	Sioux	*	*	*
	Buchanan	4	2.1	2.3	Story	6	0.9	1.0	Wapello	6	1.9	2.0
	Carroll	3	1.5	1.9	Washington	3	1.6	1.7	Webster	7	2.0	2.2
	Cerro Gordo	5	1.2	1.2	Winneshek	4	2.1	2.1				
	Clinton	8	1.8	1.8								
	Des Moines	6	1.6	1.6								
	Fayette	*	*	*								
	Jackson	5	2.8	2.5								
	Jasper	5	1.6	1.7								
	Lee	12	3.4	3.3								

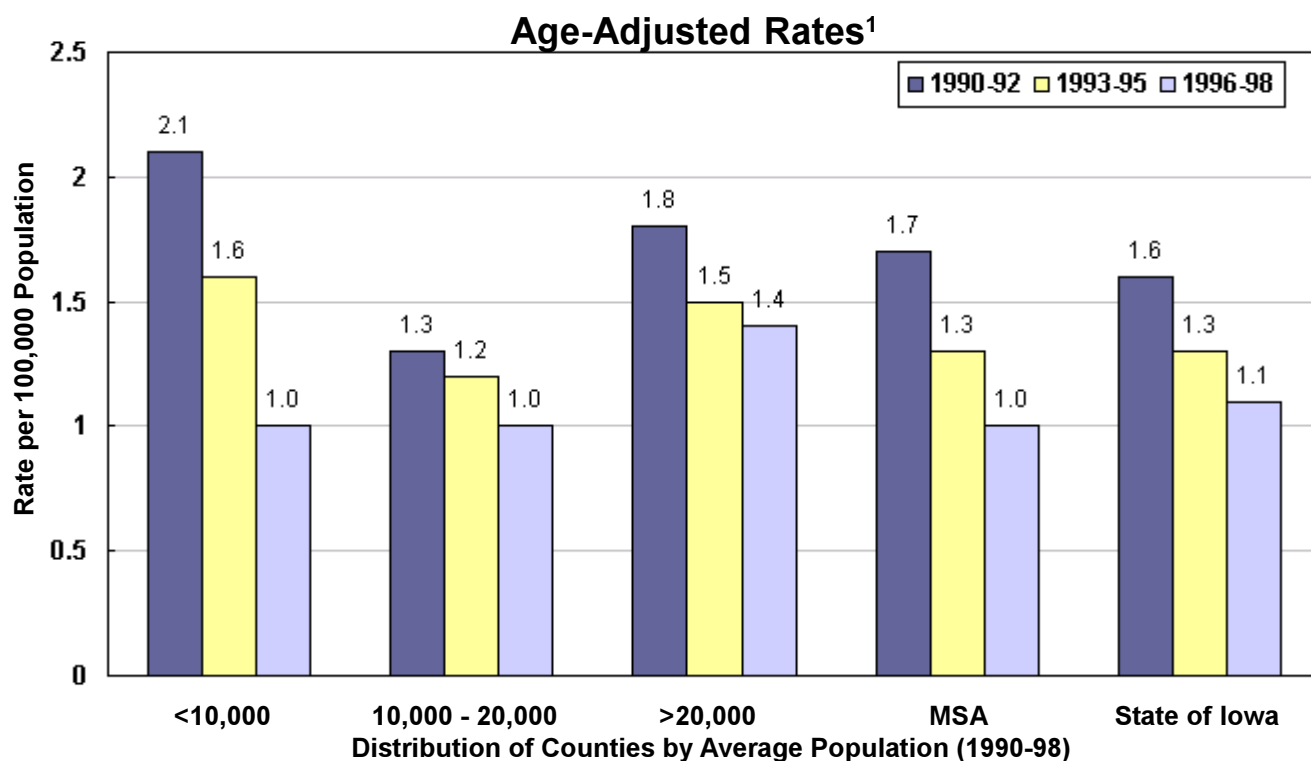
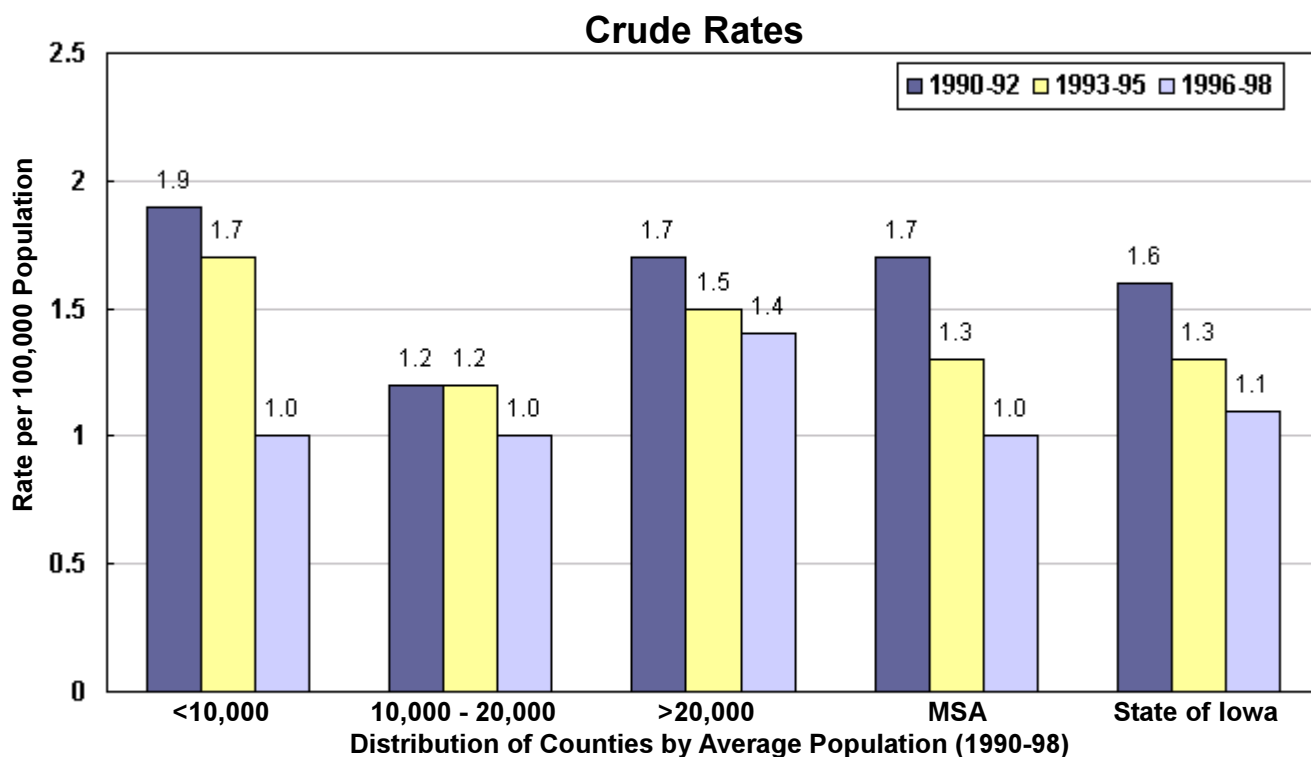
	County				County							
	Number	Crude	Adjusted	Number	Crude	Adjusted	Number	Crude	Adjusted			
<b>MSA Counties</b>	Black Hawk	8	0.7	0.7	Polk	47	1.5	1.5	Pottawattamie	18	2.4	2.4
	Dallas	7	2.4	2.3	Scott	17	1.2	1.2	Warren	3	0.9	0.8
	Dubuque	9	1.1	1.1	Woodbury	10	1.1	1.2				
	Johnson	12	1.3	1.4								
	Linn	18	1.1	1.1								
	<b>Group Totals</b>											
Number:	149											
Crude:	1.3											
Adjusted:	1.3											

<sup>1</sup>Rates per 100,000 population

<sup>2</sup>Adjusted to Year 2000 US population

Source: IDPH Vital Records via Iowa Cancer Registry, The University of Iowa

## Drowning Mortality by County Group 1990-98



<sup>1</sup>Adjusted to Year 2000 US population

## All Other Unintentional Mortality 1990-1998

TOTAL	Number	Crude <sup>1</sup>	Adjusted <sup>1,2</sup>
State of Iowa	1,669	6.6	6.0

	County				County				
	Number	Crude <sup>1</sup>	Adjusted <sup>1,2</sup>	Number	Crude <sup>1</sup>	Adjusted <sup>1,2</sup>	Number	Crude <sup>1</sup>	Adjusted <sup>1,2</sup>
<b>Counties with Average Population &lt;10,000</b>	Adair	5	6.7	6.0	Lucas	4	4.9	4.7	
	Adams	5	12.2	9.1	Monroe	7	9.6	8.2	
	Audubon	3	4.8	3.7	Osceola	3	4.7	3.9	
	Clarke	11	14.8	12.5	Pocahontas	5	6.1	5.7	
	Davis	10	13.2	12.0	Ringgold	5	10.4	6.9	
	Decatur	19	25.8	19.9	Taylor	5	7.8	4.9	
	Fremont	9	12.4	10.3	Van Buren	15	21.5	14.8	
	Howard	9	10.2	9.1	Wayne	4	6.4	3.4	
	Ida	9	12.2	10.1	Worth	11	15.6	10.4	
	<b>Group Totals</b>								
Number:	139								
Crude:	11.1								
Adjusted:	8.8								

	County				County				
	Number	Crude	Adjusted	Number	Crude	Adjusted	Number	Crude	Adjusted
<b>Counties with Average Population 10,000 to 20,000</b>	Allamakee	9	7.1	6.0	Henry	14	7.9	6.9	
	Appanoose	7	5.7	5.0	Humboldt	5	5.3	4.3	
	Buena Vista	6	3.4	3.8	Iowa	9	6.6	5.0	
	Butler	9	6.4	4.1	Jefferson	7	4.7	4.4	
	Calhoun	14	13.5	10.8	Jones	15	8.3	8.0	
	Cass	18	13.4	9.3	Keokuk	12	11.5	8.1	
	Cedar	12	7.5	6.0	Kossuth	19	11.7	9.6	
	Cherokee	12	9.7	9.5	Louisa	12	11.3	10.9	
	Chickasaw	8	6.7	5.0	Lyon	4	3.7	3.6	
	Clay	11	6.9	5.7	Madison	13	11.0	9.5	
	Clayton	20	11.8	10.5	Mills	13	10.5	10.5	
	Crawford	13	8.7	8.1	Mitchell	13	13.1	10.4	
	Delaware	12	7.3	6.8	Monona	9	9.9	9.1	
	Dickinson	10	7.2	6.0	Montgomery	10	9.3	6.6	
	Emmet	13	12.8	9.1	O'Brien	11	8.0	6.1	
	Floyd	11	7.3	6.4	Page	20	13.1	8.2	
	Franklin	8	8.0	5.0	Palo Alto	9	9.7	7.9	
	Greene	7	7.7	6.1	Poweshiek	10	5.9	4.9	
	Grundy	8	7.3	5.3	Sac	6	5.5	4.4	
	Guthrie	5	4.9	3.1	Shelby	13	11.0	7.5	
Hamilton	8	5.5	4.6	Tama	11	6.9	5.7		
Hancock	5	4.5	4.2	Union	9	8.0	6.3		
Hardin	24	14.3	9.8	Winnebago	12	11.1	9.6		
Harrison	13	9.7	7.2	Wright	12	9.4	8.3		
<b>Group Totals</b>									
Number:	531								
Crude:	8.5								
Adjusted:	6.9								

	County				County				
	Number	Crude	Adjusted	Number	Crude	Adjusted	Number	Crude	Adjusted
<b>Counties with Average Population &gt;20,000</b>	Benton	15	7.0	6.4	Mahaska	18	9.2	8.2	
	Boone	22	9.6	7.5	Marion	33	12.0	10.6	
	Bremer	13	6.2	5.3	Marshall	37	10.7	8.9	
	Buchanan	19	10.0	9.5	Muscatine	22	6.0	6.0	
	Carroll	17	8.8	8.4	Plymouth	18	8.3	7.5	
	Cerro Gordo	24	5.7	5.1	Sioux	12	4.3	4.7	
	Clinton	26	5.7	5.6	Story	24	3.6	4.2	
	Des Moines	27	7.0	6.4	Wapello	23	7.2	6.1	
	Fayette	10	5.1	3.8	Washington	13	7.1	5.6	
	Jackson	18	10.0	8.9	Webster	33	9.3	8.0	
	Jasper	14	4.4	4.5	Winneshek	6	3.2	3.0	
	Lee	16	4.6	3.9					
	<b>Group Totals</b>								
Number:	460								
Crude:	6.8								
Adjusted:	6.2								

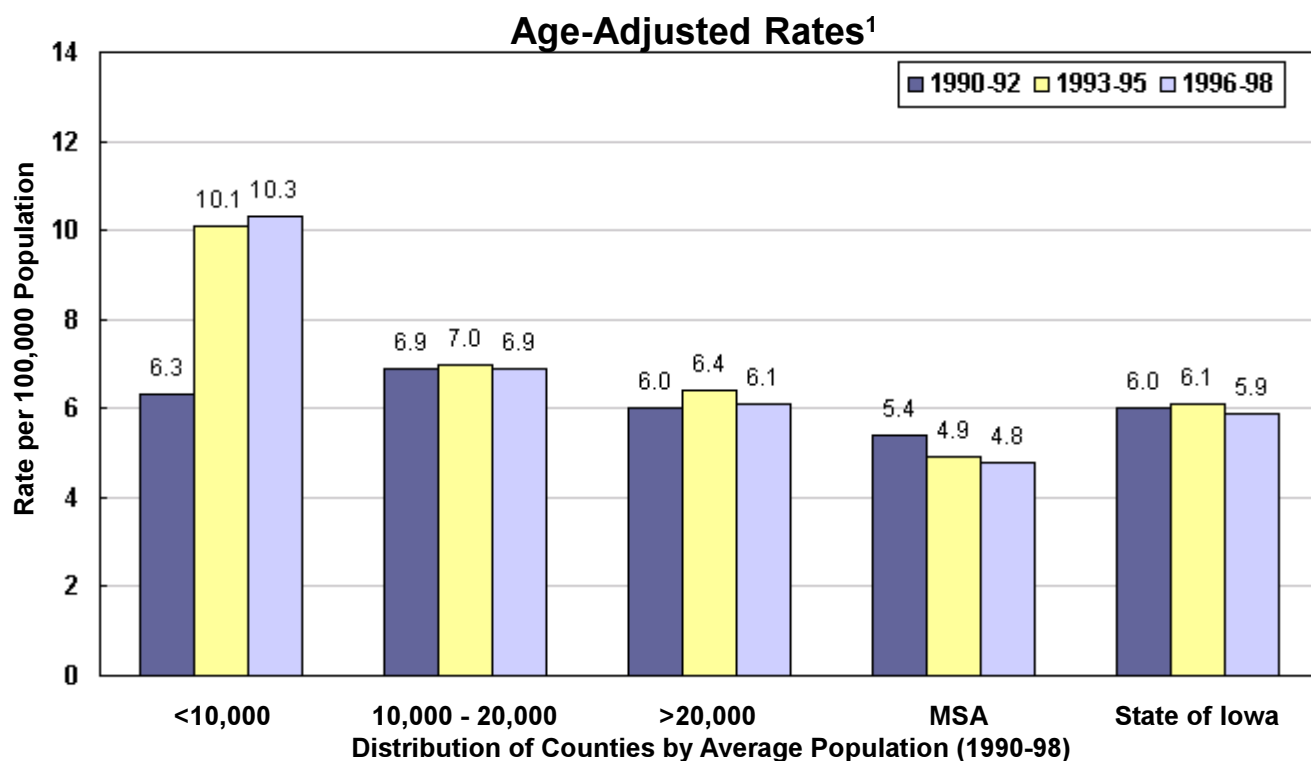
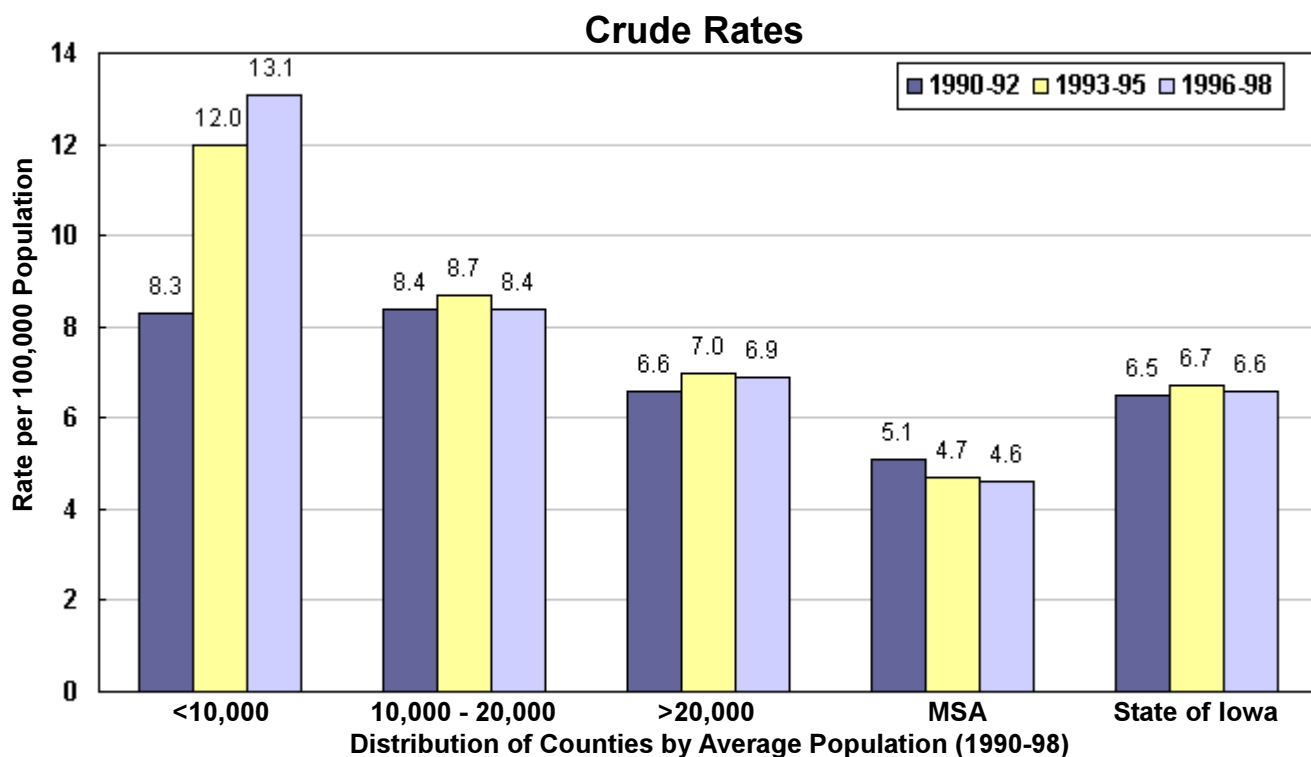
	County				County				
	Number	Crude	Adjusted	Number	Crude	Adjusted	Number	Crude	Adjusted
<b>MSA Counties</b>	Black Hawk	81	7.3	7.3	Polk	142	4.6	4.9	
	Dallas	15	5.1	5.0	Pottawattamie	38	5.0	5.0	
	Dubuque	39	4.9	4.6	Scott	65	4.6	5.0	
	Johnson	29	3.2	4.3	Warren	15	4.4	4.6	
	Linn	66	4.2	4.2	Woodbury	49	5.4	5.2	
	<b>Group Totals</b>								
Number:	539								
Crude:	4.8								
Adjusted:	5.0								

<sup>1</sup>Rates per 100,000 population

<sup>2</sup>Adjusted to Year 2000 US population

Source: IDPH Vital Records via Iowa Cancer Registry, The University of Iowa

## All Other Unintentional Mortality by County Group 1990-98



<sup>1</sup>Adjusted to Year 2000 US population

*(This page blank)*