

Injury Mortality

Transportation-related mortality accounted for 5,707 deaths in Iowa, 91% of which were motor vehicle fatalities, from 1990-2000. The rates for these fatalities are highest in the rural counties and lowest in the most urban counties. Crude rates for suicide, firearm mortality, and falls mortality tend to be highest in rural counties, but the age-adjusted rates are more similar for the county groups. Homicide rates are consistently higher in the urban counties. Poisoning mortality rates have shown much variation across years for each county group. The state's mortality rate from burns has increased in recent years after decreasing from 1979-1998. In general, drowning deaths have consistently decreased across all county levels since 1979. Deaths from all other unintentional injuries are difficult to compare for 1999-2000 and preceding years due to changes in the mortality classification systems (discussed below).

HIGHLIGHTS...

- ✓ Injuries are the leading cause of death in persons 1-34 years of age.
- ✓ Motor vehicle deaths account for 91% of all transportation deaths in Iowa.
- ✓ Crude mortality rates from motor vehicle accidents, suicide, firearms, and falls are highest in rural counties.

Beginning in 1999, the tenth revision of the International Classification of Diseases (ICD-10) replaced the ninth version (ICD-9) as the standard mortality classification system. ICD-10 is more detailed than ICD-9; ICD-10 has about 8,000 categories while ICD-9 has about 5,000 categories. Also, some of the coding rules and rules for selecting the underlying cause of death have changed. Because of the new classification system, observed changes in mortality rates between 1999-2000 and preceding years could be due, in part, to changes in the method of mortality classification. Therefore, one should compare rates from 1999-2000 and preceding years with caution. The ICD-9 and ICD-10 codes used for each type of Injury Mortality are listed in the appendix.

The source of this mortality data is the cause of death data obtained from death certificates filed at the Iowa Department of Public Health. Analysis was done by the State Health Registry of Iowa and the Center for Public Health Statistics at the University of Iowa. Age-adjusted rates were calculated using the Year 2000 US population distribution.

All Transportation Mortality 1990-2000

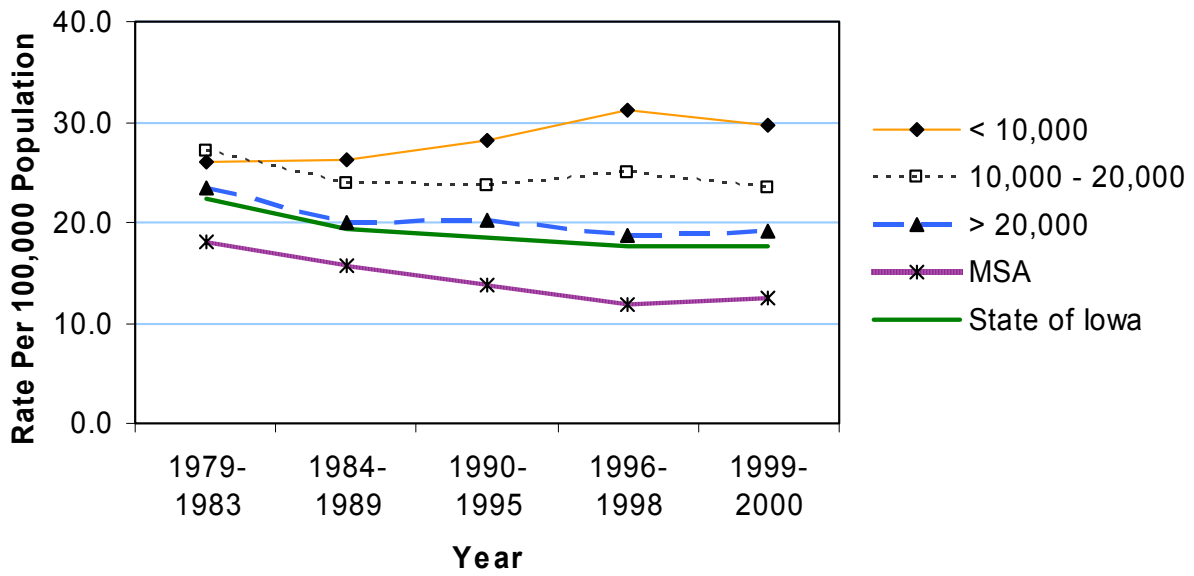
	Average Population < 10,000				Average Population 10,000 to 20,000				Average Population > 20,000				MSA Counties			
	County	#	Crude ¹ (Rank ³)	Adjusted ^{1,2} (Rank ³)	County	#	Crude ¹ (Rank ³)	Adjusted ^{1,2} (Rank ³)	County	#	Crude ¹ (Rank ³)	Adjusted ^{1,2} (Rank ³)	County	#	Crude ¹ (Rank ³)	Adjusted ^{1,2} (Rank ³)
Counties with Average Population < 10,000	Adair	31	33.7 (09)	33.2 (12)	Lucas	38	37.3 (04)	35.5 (08)	Lucas	38	37.3 (04)	35.5 (08)	Lucas	38	37.3 (04)	35.5 (08)
	Adams	15	29.6 (16)	34.2 (10)	Monroe	33	36.9 (05)	39.4 (04)	Monroe	33	36.9 (05)	39.4 (04)	Monroe	33	36.9 (05)	39.4 (04)
	Audubon	17	22.0 (51)	18.8 (72)	Osceola	20	25.4 (30)	27.1 (25)	Osceola	20	25.4 (30)	27.1 (25)	Osceola	20	25.4 (30)	27.1 (25)
	Clarke	26	27.4 (19)	30.3 (16)	Pocahontas	24	24.0 (38)	26.4 (32)	Pocahontas	24	24.0 (38)	26.4 (32)	Pocahontas	24	24.0 (38)	26.4 (32)
	Davis	37	39.9 (02)	39.4 (03)	Ringgold	12	20.1 (63)	18.8 (73)	Ringgold	12	20.1 (63)	18.8 (73)	Ringgold	12	20.1 (63)	18.8 (73)
	Decatur	29	31.4 (13)	28.4 (20)	Taylor	20	25.9 (27)	29.4 (17)	Taylor	20	25.9 (27)	29.4 (17)	Taylor	20	25.9 (27)	29.4 (17)
	Fremont	22	24.6 (35)	27.3 (24)	Van Buren	27	31.8 (12)	32.3 (13)	Van Buren	27	31.8 (12)	32.3 (13)	Van Buren	27	31.8 (12)	32.3 (13)
	Howard	21	19.2 (69)	20.4 (62)	Wayne	36	47.2 (01)	55.7 (01)	Wayne	36	47.2 (01)	55.7 (01)	Wayne	36	47.2 (01)	55.7 (01)
	Ida	29	32.4 (11)	36.1 (07)	Worth	14	16.0 (86)	16.5 (86)	Worth	14	16.0 (86)	16.5 (86)	Worth	14	16.0 (86)	16.5 (86)
					Total	451	29.2	30.4	Total	451	29.2	30.4	Total	451	29.2	30.4
	Counties with Average Population 10,000 to 20,000	Allamakee	47	29.8 (15)	31.8 (14)	Humboldt	22	19.0 (71)	20.7 (57)	Humboldt	22	19.0 (71)	20.7 (57)	Humboldt	22	19.0 (71)
Appanoose		37	24.4 (37)	24.9 (38)	Iowa	45	27.0 (21)	29.2 (18)	Iowa	45	27.0 (21)	29.2 (18)	Iowa	45	27.0 (21)	29.2 (18)
Butler		33	19.3 (68)	20.3 (63)	Jefferson	42	23.2 (42)	23.2 (42)	Jefferson	42	23.2 (42)	23.2 (42)	Jefferson	42	23.2 (42)	23.2 (42)
Calhoun		23	18.3 (78)	19.5 (68)	Keokuk	49	38.7 (03)	40.0 (02)	Keokuk	49	38.7 (03)	40.0 (02)	Keokuk	49	38.7 (03)	40.0 (02)
Cass		38	23.1 (44)	24.4 (40)	Kossuth	41	21.0 (55)	21.3 (53)	Kossuth	41	21.0 (55)	21.3 (53)	Kossuth	41	21.0 (55)	21.3 (53)
Cedar		48	24.5 (36)	24.7 (39)	Louisa	35	26.7 (22)	26.6 (28)	Louisa	35	26.7 (22)	26.6 (28)	Louisa	35	26.7 (22)	26.6 (28)
Cherokee		39	26.0 (26)	26.4 (31)	Lyon	29	22.3 (50)	21.8 (52)	Lyon	29	22.3 (50)	21.8 (52)	Lyon	29	22.3 (50)	21.8 (52)
Chickasaw		35	24.0 (39)	25.6 (34)	Madison	37	25.4 (29)	27.5 (22)	Madison	37	25.4 (29)	27.5 (22)	Madison	37	25.4 (29)	27.5 (22)
Clay		31	16.0 (87)	16.1 (88)	Mills	39	25.8 (28)	26.8 (27)	Mills	39	25.8 (28)	26.8 (27)	Mills	39	25.8 (28)	26.8 (27)
Clayton		72	34.7 (08)	35.4 (09)	Mitchell	30	25.0 (33)	22.3 (46)	Mitchell	30	25.0 (33)	22.3 (46)	Mitchell	30	25.0 (33)	22.3 (46)
Crawford		56	30.3 (14)	29.2 (19)	Monona	31	28.0 (17)	31.6 (15)	Monona	31	28.0 (17)	31.6 (15)	Monona	31	28.0 (17)	31.6 (15)
Delaware		43	21.3 (54)	22.0 (51)	Montgomery	25	19.1 (70)	20.0 (66)	Montgomery	25	19.1 (70)	20.0 (66)	Montgomery	25	19.1 (70)	20.0 (66)
Dickinson		36	20.9 (56)	20.0 (65)	O'Brien	34	20.0 (65)	20.5 (60)	O'Brien	34	20.0 (65)	20.5 (60)	O'Brien	34	20.0 (65)	20.5 (60)
Emmet		26	20.7 (58)	20.6 (59)	Page	41	22.0 (52)	20.6 (58)	Page	41	22.0 (52)	20.6 (58)	Page	41	22.0 (52)	20.6 (58)
Floyd		37	19.8 (67)	19.0 (70)	Palo Alto	32	28.0 (18)	27.9 (21)	Palo Alto	32	28.0 (18)	27.9 (21)	Palo Alto	32	28.0 (18)	27.9 (21)
Franklin		28	23.1 (45)	22.5 (44)	Poweshiek	33	15.9 (89)	15.3 (89)	Poweshiek	33	15.9 (89)	15.3 (89)	Poweshiek	33	15.9 (89)	15.3 (89)
Greene		23	20.3 (60)	22.1 (49)	Sac	44	33.4 (10)	33.4 (11)	Sac	44	33.4 (10)	33.4 (11)	Sac	44	33.4 (10)	33.4 (11)
Grundy		27	20.1 (62)	21.1 (54)	Shelby	37	25.4 (31)	26.2 (33)	Shelby	37	25.4 (31)	26.2 (33)	Shelby	37	25.4 (31)	26.2 (33)
Guthrie		19	15.4 (91)	16.5 (85)	Tama	70	35.7 (07)	38.0 (05)	Tama	70	35.7 (07)	38.0 (05)	Tama	70	35.7 (07)	38.0 (05)
Hamilton		41	22.9 (46)	22.1 (48)	Union	31	22.6 (47)	22.5 (45)	Union	31	22.6 (47)	22.5 (45)	Union	31	22.6 (47)	22.5 (45)
Hancock		25	18.6 (77)	18.4 (75)	Winnebago	29	22.3 (49)	20.7 (56)	Winnebago	29	22.3 (49)	20.7 (56)	Winnebago	29	22.3 (49)	20.7 (56)
Hardin	39	18.7 (75)	17.5 (79)	Wright	42	26.4 (25)	26.6 (29)	Wright	42	26.4 (25)	26.6 (29)	Wright	42	26.4 (25)	26.6 (29)	
Harrison	60	35.9 (06)	36.8 (06)	Total	1,681	24.0	24.2	Total	1,681	24.0	24.2	Total	1,681	24.0	24.2	
Counties with Average Population > 20,000	Benton	44	16.8 (83)	17.5 (78)	Jones	59	26.7 (23)	26.5 (30)	Jones	59	26.7 (23)	26.5 (30)	Jones	59	26.7 (23)	26.5 (30)
	Boone	56	19.9 (66)	19.7 (67)	Lee	113	26.5 (24)	27.0 (26)	Lee	113	26.5 (24)	27.0 (26)	Lee	113	26.5 (24)	27.0 (26)
	Bremer	48	18.8 (74)	17.2 (81)	Mahaska	54	22.3 (48)	22.2 (47)	Mahaska	54	22.3 (48)	22.2 (47)	Mahaska	54	22.3 (48)	22.2 (47)
	Buchanan	48	20.7 (59)	21.0 (55)	Marion	71	20.8 (57)	20.4 (61)	Marion	71	20.8 (57)	20.4 (61)	Marion	71	20.8 (57)	20.4 (61)
	Buena Vista	45	20.1 (64)	18.3 (76)	Marshall	93	21.8 (53)	22.1 (50)	Marshall	93	21.8 (53)	22.1 (50)	Marshall	93	21.8 (53)	22.1 (50)
	Carroll	55	23.2 (43)	23.5 (41)	Muscatine	86	19.0 (72)	19.1 (69)	Muscatine	86	19.0 (72)	19.1 (69)	Muscatine	86	19.0 (72)	19.1 (69)
	Cerro Gordo	85	16.5 (85)	16.3 (87)	Plymouth	45	16.9 (81)	17.3 (80)	Plymouth	45	16.9 (81)	17.3 (80)	Plymouth	45	16.9 (81)	17.3 (80)
	Clinton	106	18.9 (73)	18.8 (71)	Sioux	62	18.1 (79)	16.8 (83)	Sioux	62	18.1 (79)	16.8 (83)	Sioux	62	18.1 (79)	16.8 (83)
	Des Moines	85	18.1 (80)	18.0 (77)	Story	100	11.8 (96)	11.3 (98)	Story	100	11.8 (96)	11.3 (98)	Story	100	11.8 (96)	11.3 (98)
	Fayette	61	25.1 (32)	25.2 (37)	Wapello	98	24.7 (34)	25.2 (36)	Wapello	98	24.7 (34)	25.2 (36)	Wapello	98	24.7 (34)	25.2 (36)
	Henry	51	23.3 (41)	22.8 (43)	Washington	45	20.2 (61)	20.3 (64)	Washington	45	20.2 (61)	20.3 (64)	Washington	45	20.2 (61)	20.3 (64)
	Jackson	60	27.1 (20)	27.4 (23)	Webster	82	18.7 (76)	18.6 (74)	Webster	82	18.7 (76)	18.6 (74)	Webster	82	18.7 (76)	18.6 (74)
	Jasper	66	16.8 (82)	17.1 (82)	Winneshiek	37	15.9 (88)	14.0 (91)	Winneshiek	37	15.9 (88)	14.0 (91)	Winneshiek	37	15.9 (88)	14.0 (91)
					Total	1,755	19.6	19.0	Total	1,755	19.6	19.0	Total	1,755	19.6	19.0
MSA Counties	Black Hawk	215	15.4 (90)	15.1 (90)	Polk	492	12.7 (93)	12.8 (93)	Polk	492	12.7 (93)	12.8 (93)	Polk	492	12.7 (93)	12.8 (93)
	Dallas	91	23.8 (40)	25.3 (35)	Pottawattamie	156	16.7 (84)	16.7 (84)	Pottawattamie	156	16.7 (84)	16.7 (84)	Pottawattamie	156	16.7 (84)	16.7 (84)
	Dubuque	123	12.7 (94)	12.5 (94)	Scott	199	11.6 (97)	11.7 (96)	Scott	199	11.6 (97)	11.7 (96)	Scott	199	11.6 (97)	11.7 (96)
	Johnson	105	9.2 (99)	8.8 (99)	Warren	49	11.6 (98)	11.7 (97)	Warren	49	11.6 (98)	11.7 (97)	Warren	49	11.6 (98)	11.7 (97)
	Linn	236	11.9 (95)	11.8 (95)	Woodbury	154	13.7 (92)	13.5 (92)	Woodbury	154	13.7 (92)	13.5 (92)	Woodbury	154	13.7 (92)	13.5 (92)
	State Totals	5,707	18.1	17.7	Total	1,820	13.0	12.9	Total	1,820	13.0	12.9	Total	1,820	13.0	12.9

¹Rates per 100,000 population
²Adjusted to Year 2000 population
³Rank among 99 Iowa counties

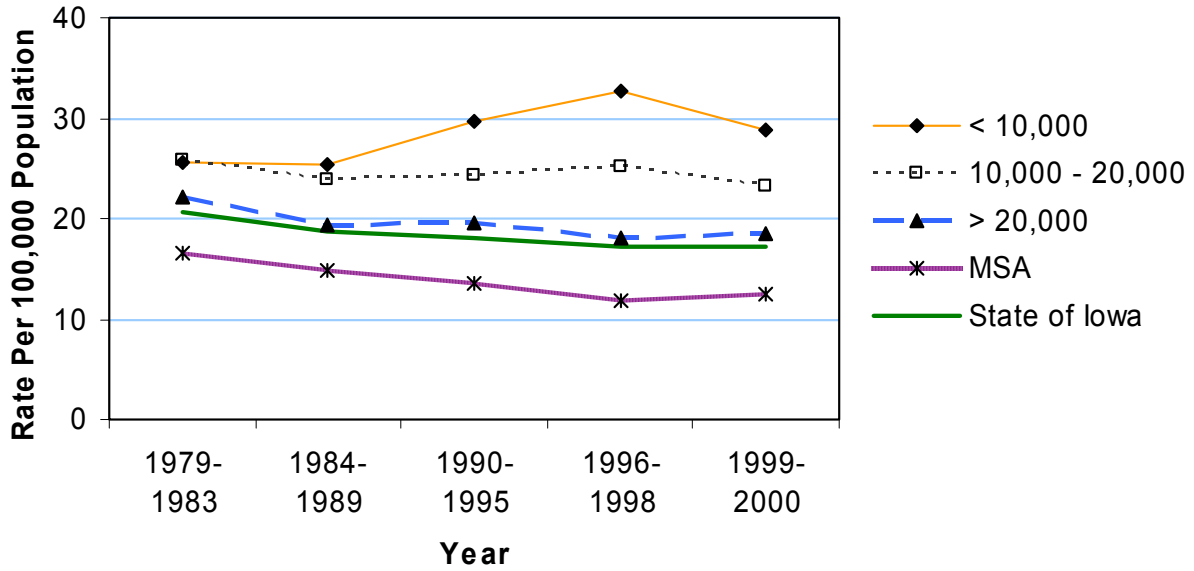
Source: Iowa Department of Public Health via Iowa Cancer Registry

All Transportation Mortality by County Group 1979-2000

Crude Rates



Age-Adjusted Rates



Motor Vehicle Traffic Mortality 1990-2000

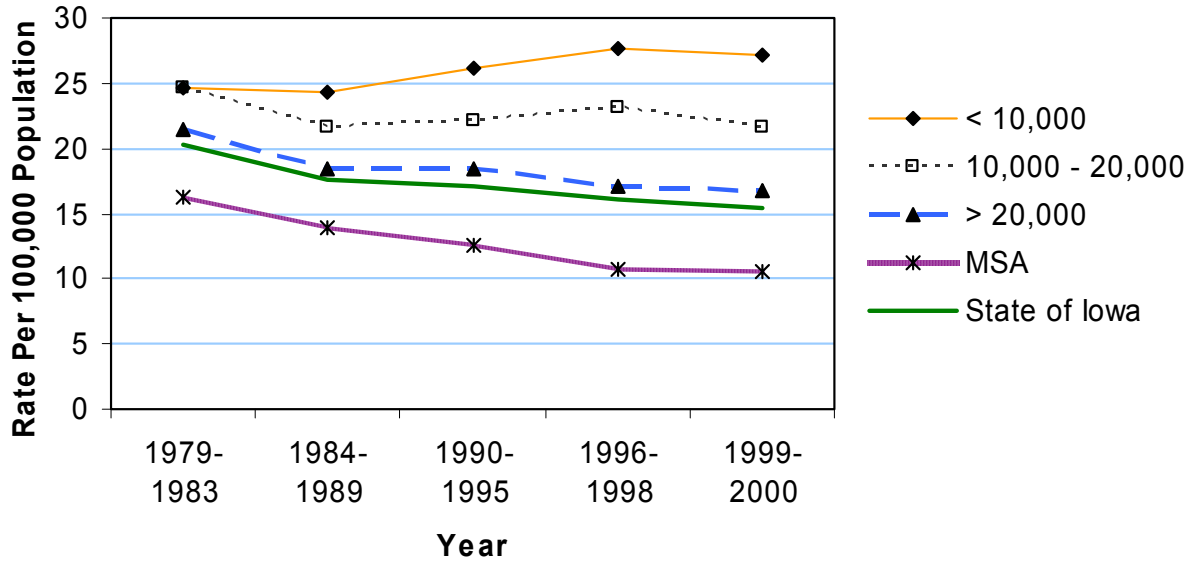
	Counties with Average Population < 10,000				Counties with Average Population 10,000 to 20,000				Counties with Average Population > 20,000				MSA Counties			
	County	#	Crude ¹ (Rank ³)	Adjusted ^{1,2} (Rank ³)	County	#	Crude ¹ (Rank ³)	Adjusted ^{1,2} (Rank ³)	County	#	Crude ¹ (Rank ³)	Adjusted ^{1,2} (Rank ³)	County	#	Crude ¹ (Rank ³)	Adjusted ^{1,2} (Rank ³)
Counties with Average Population < 10,000	Adair	30	32.6 (06)	32.2 (09)	Lucas	32	31.4 (09)	31.0 (11)								
	Adams	14	27.7 (14)	32.0 (10)	Monroe	29	32.4 (07)	34.2 (06)								
	Audubon	15	19.4 (58)	16.7 (73)	Osceola	18	22.8 (37)	23.8 (32)								
	Clarke	23	24.2 (24)	26.2 (20)	Pocahontas	23	23.0 (35)	25.3 (23)								
	Davis	36	38.8 (02)	38.3 (02)	Ringgold	12	20.1 (53)	18.8 (61)								
	Decatur	28	30.3 (11)	27.0 (17)	Taylor	19	24.6 (21)	28.2 (16)								
	Fremont	21	23.5 (29)	26.3 (18)	Van Buren	25	29.4 (12)	30.2 (13)								
	Howard	18	16.5 (76)	17.6 (67)	Wayne	32	42.0 (01)	50.5 (01)								
	Ida	26	29.0 (13)	33.4 (07)	Worth	12	13.7 (90)	13.7 (89)								
					Total	413	26.8	27.9								
	Counties with Average Population 10,000 to 20,000	Allamakee	42	26.6 (16)	28.7 (15)	Humboldt	20	17.3 (69)	17.8 (66)							
Appanoose		35	23.1 (34)	23.7 (34)	Iowa	40	24.0 (27)	26.2 (19)								
Butler		31	18.1 (67)	18.9 (60)	Jefferson	42	23.2 (33)	23.2 (37)								
Calhoun		18	14.3 (87)	15.8 (80)	Keokuk	46	36.3 (03)	37.8 (03)								
Cass		37	22.5 (39)	23.7 (35)	Kossuth	40	20.5 (50)	20.7 (50)								
Cedar		46	23.5 (30)	23.7 (33)	Louisa	33	25.2 (20)	25.2 (25)								
Cherokee		33	22.0 (41)	22.7 (41)	Lyon	26	20.0 (54)	19.6 (54)								
Chickasaw		34	23.3 (31)	25.1 (27)	Madison	35	24.0 (26)	26.2 (21)								
Clay		31	16.0 (79)	16.1 (75)	Mills	36	23.8 (28)	24.9 (30)								
Clayton		68	32.7 (05)	33.3 (08)	Mitchell	29	24.2 (25)	21.8 (44)								
Crawford		50	27.1 (15)	26.0 (22)	Monona	29	26.2 (17)	30.1 (14)								
Delaware		39	19.4 (60)	19.8 (53)	Montgomery	22	16.8 (75)	17.0 (72)								
Dickinson		34	19.7 (56)	18.5 (62)	O'Brien	32	18.8 (64)	19.1 (59)								
Emmet		25	19.9 (55)	19.6 (55)	Page	38	20.4 (52)	19.1 (57)								
Floyd		36	19.2 (62)	18.3 (63)	Palo Alto	29	25.4 (18)	25.1 (26)								
Franklin		26	21.4 (47)	20.8 (48)	Poweshiek	31	14.9 (83)	14.6 (87)								
Greene		22	19.5 (57)	21.8 (45)	Sac	40	30.4 (10)	30.5 (12)								
Grundy		26	19.4 (59)	20.3 (52)	Shelby	34	23.3 (32)	24.1 (31)								
Guthrie		16	13.0 (91)	13.6 (90)	Tama	63	32.1 (08)	34.8 (05)								
Hamilton		38	21.2 (48)	20.3 (51)	Union	30	21.9 (43)	21.8 (43)								
Hancock	22	16.4 (78)	15.9 (78)	Winnebago	27	20.8 (49)	19.1 (58)									
Hardin	36	17.3 (70)	15.8 (79)	Wright	39	24.6 (22)	25.1 (28)									
Harrison	57	34.1 (04)	34.8 (04)	Total	1,563	22.3	22.5									
Counties with Average Population > 20,000	Benton	39	14.9 (84)	15.4 (82)	Jones	56	25.3 (19)	25.3 (24)								
	Boone	52	18.5 (66)	18.3 (64)	Lee	95	22.3 (40)	22.8 (40)								
	Bremer	44	17.3 (73)	15.7 (81)	Mahaska	52	21.5 (44)	21.4 (46)								
	Buchanan	40	17.3 (72)	17.4 (69)	Marion	63	18.5 (65)	18.2 (65)								
	Buena Vista	43	19.2 (63)	17.4 (68)	Marshall	87	20.4 (51)	20.7 (49)								
	Carroll	54	22.8 (38)	23.2 (36)	Muscatine	78	17.2 (74)	17.3 (71)								
	Cerro Gordo	78	15.1 (81)	15.0 (83)	Plymouth	41	15.4 (80)	15.9 (76)								
	Clinton	99	17.7 (68)	17.4 (70)	Sioux	59	17.3 (71)	15.9 (77)								
	Des Moines	71	15.1 (82)	15.0 (84)	Story	93	11.0 (94)	10.3 (96)								
	Fayette	56	23.0 (36)	23.1 (38)	Wapello	85	21.5 (46)	21.8 (42)								
	Henry	48	21.9 (42)	21.4 (47)	Washington	43	19.3 (61)	19.6 (56)								
	Jackson	54	24.4 (23)	24.9 (29)	Webster	72	16.4 (77)	16.2 (74)								
	Jasper	56	14.2 (88)	14.7 (86)	Winneshiek	32	13.8 (89)	12.3 (91)								
					Total	1,590	17.7	17.1								
MSA Counties	Black Hawk	201	14.4 (86)	14.0 (88)	Polk	442	11.4 (93)	11.5 (93)								
	Dallas	82	21.5 (45)	22.9 (39)	Pottawattamie	138	14.8 (85)	14.8 (85)								
	Dubuque	100	10.3 (97)	10.2 (97)	Scott	177	10.3 (96)	10.4 (95)								
	Johnson	95	8.3 (99)	7.9 (99)	Warren	42	9.9 (98)	10.0 (98)								
	Linn	213	10.7 (95)	10.7 (94)	Woodbury	140	12.4 (92)	12.2 (92)								
	State Totals	5,196	16.5	16.1	Total	1,630	11.7	11.5								

¹Rates per 100,000 population²Adjusted to Year 2000 population³Rank among 99 Iowa counties

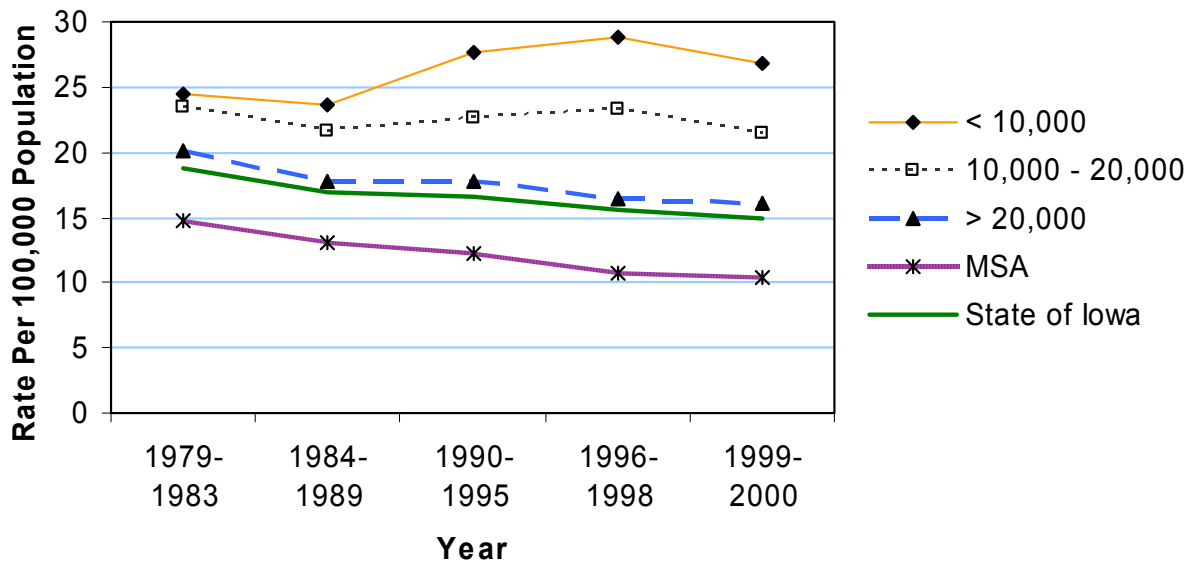
Source: Iowa Department of Public Health via Iowa Cancer Registry

Motor Vehicle Traffic Mortality by County Group 1979-2000

Crude Rates



Age-Adjusted Rates



Suicide Mortality 1990-2000

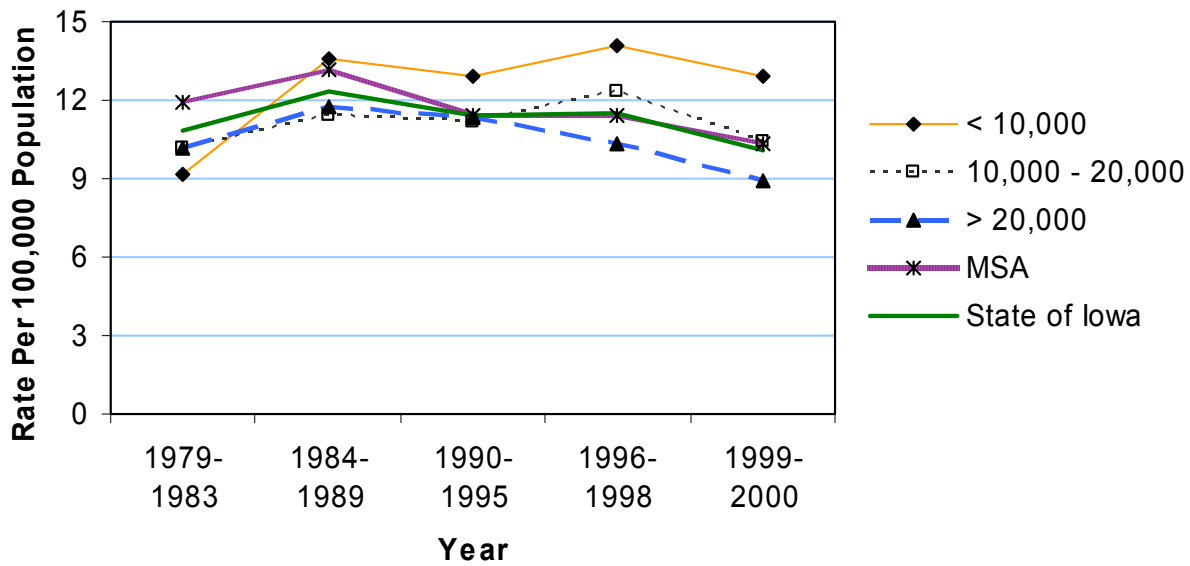
	County	#	Crude ¹	Adjusted ^{1,2}	County	#	Crude ¹	Adjusted ^{1,2}
Counties with Average Population < 10,000	Adair	11	12.0	10.9	Lucas	17	16.7	15.9
	Adams	*	*	*	Monroe	20	22.3	23.6
	Audubon	10	13.0	12.3	Osceola	10	12.7	11.8
	Clarke	14	14.8	14.2	Pocahontas	14	14.0	14.3
	Davis	13	14.0	13.2	Ringgold	8	13.4	10.3
	Decatur	15	16.2	14.9	Taylor	11	14.2	10.6
	Fremont	10	11.2	11.5	Van Buren	12	14.1	14.0
	Howard	6	5.5	6.6	Wayne	9	11.8	11.2
	Ida	8	8.9	8.7	Worth	12	13.7	15.6
					Total	204	13.2	12.8
Counties with Average Population 10,000 to 20,000	Allamakee	17	10.8	10.8	Humboldt	18	15.6	16.8
	Appanoose	18	11.9	11.2	Iowa	16	9.6	9.1
	Butler	14	8.2	8.4	Jefferson	35	19.4	19.0
	Calhoun	14	11.2	10.8	Keokuk	22	17.4	16.4
	Cass	14	8.5	9.1	Kossuth	9	4.6	4.1
	Cedar	23	11.7	12.1	Louisa	18	13.7	13.7
	Cherokee	22	14.7	14.9	Lyon	8	6.1	5.5
	Chickasaw	15	10.3	11.1	Madison	15	10.3	10.2
	Clay	21	10.8	10.3	Mills	17	11.2	12.4
	Clayton	33	15.9	15.1	Mitchell	17	14.2	13.6
	Crawford	16	8.7	9.0	Monona	15	13.6	14.9
	Delaware	19	9.4	10.6	Montgomery	18	13.7	13.4
	Dickinson	22	12.7	12.9	O'Brien	21	12.3	12.6
	Emmet	13	10.4	9.2	Page	18	9.6	9.6
	Floyd	22	11.8	10.3	Palo Alto	8	7.0	7.2
	Franklin	10	8.2	9.5	Poweshiek	24	11.5	11.1
	Greene	14	12.4	12.6	Sac	15	11.4	11.7
	Grundy	17	12.7	11.8	Shelby	15	10.3	10.0
	Guthrie	16	13.0	11.6	Tama	27	13.8	13.1
	Hamilton	23	12.8	12.6	Union	26	19.0	18.6
Hancock	13	9.7	10.0	Winnebago	10	7.7	8.1	
Hardin	18	8.6	8.1	Wright	12	7.6	6.8	
Harrison	16	9.6	9.6	Total	794	11.3	11.2	
Counties with Average Population > 20,000	Benton	27	10.3	10.3	Jones	28	12.6	12.0
	Boone	33	11.7	11.6	Lee	56	13.1	13.3
	Bremer	33	12.9	12.2	Mahaska	17	7.0	7.0
	Buchanan	35	15.1	16.0	Marion	29	8.5	9.1
	Buena Vista	17	7.6	7.6	Marshall	52	12.2	12.5
	Carroll	26	11.0	10.9	Muscatine	50	11.0	11.0
	Cerro Gordo	54	10.5	10.6	Plymouth	25	9.4	9.9
	Clinton	58	10.4	10.1	Sioux	14	4.1	3.9
	Des Moines	72	15.3	14.9	Story	69	8.2	8.5
	Fayette	21	8.6	8.4	Wapello	50	12.6	12.5
	Henry	16	7.3	6.9	Washington	30	13.5	12.7
	Jackson	34	15.3	15.7	Webster	55	12.5	12.4
	Jasper	34	8.6	8.5	Winneshiek	17	7.3	7.6
					Total	952	10.6	10.5
MSA Counties	Black Hawk	143	10.2	10.2	Polk	451	11.6	11.7
	Dallas	45	11.8	11.9	Pottawattamie	137	14.7	14.9
	Dubuque	107	11.0	11.0	Scott	194	11.3	11.6
	Johnson	94	8.2	7.6	Warren	42	9.9	10.1
	Linn	238	12.0	11.9	Woodbury	114	10.1	10.2
State Totals	3,515	11.2	11.0	Total	1,565	11.2	11.1	

¹Rates per 100,000 population²Adjusted to Year 2000 population

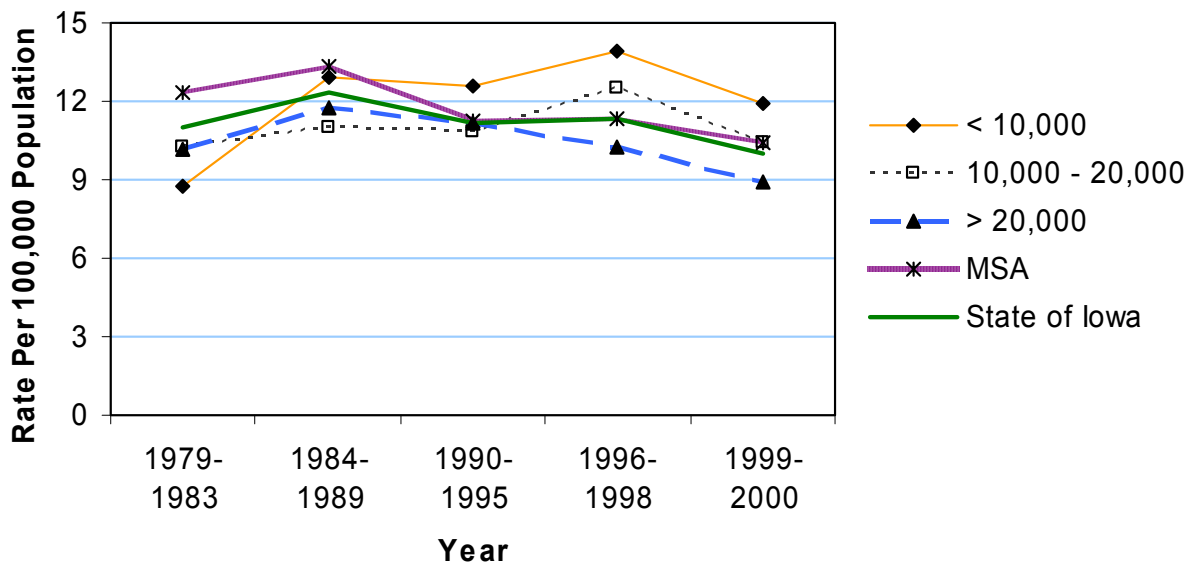
Source: Iowa Department of Public Health via Iowa Cancer Registry

Suicide Mortality by County Group 1979-2000

Crude Rates



Age-Adjusted Rates



Firearms Mortality 1990-2000

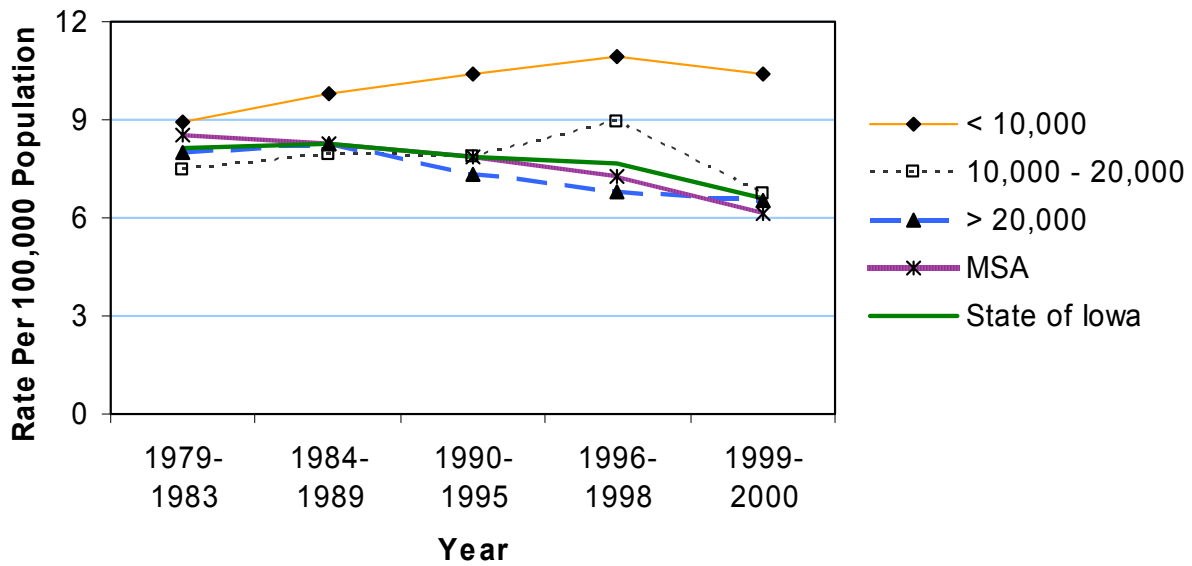
	County	#	Crude ¹	Adjusted ^{1,2}	County	#	Crude ¹	Adjusted ^{1,2}
Counties with Average Population < 10,000	Adair	10	10.9	10.4	Lucas	11	10.8	10.3
	Adams	5	9.9	12.2	Monroe	10	11.2	10.7
	Audubon	6	7.8	6.6	Osceola	*	*	*
	Clarke	13	13.7	14.3	Pocahontas	10	10.0	10.5
	Davis	14	15.1	14.4	Ringgold	8	13.4	10.3
	Decatur	16	17.3	17.0	Taylor	10	12.9	10.0
	Fremont	9	10.1	10.8	Van Buren	14	16.5	16.1
	Howard	5	4.6	5.6	Wayne	7	9.2	9.5
	Ida	*	*	*	Worth	7	8.0	8.9
					Total	163	10.6	10.4
	Counties with Average Population 10,000 to 20,000	Allamakee	15	9.5	10.5	Humboldt	12	10.4
Appanoose		13	8.6	8.0	Iowa	14	8.4	8.2
Butler		12	7.0	7.0	Jefferson	23	12.7	13.5
Calhoun		8	6.4	5.8	Keokuk	18	14.2	13.8
Cass		13	7.9	8.1	Kossuth	7	3.6	3.3
Cedar		19	9.7	10.0	Louisa	10	7.6	7.6
Cherokee		11	7.3	7.5	Lyon	*	*	*
Chickasaw		9	6.2	6.6	Madison	12	8.2	7.9
Clay		11	5.7	5.3	Mills	11	7.3	7.8
Clayton		28	13.5	13.0	Mitchell	6	5.0	3.8
Crawford		11	6.0	5.9	Monona	13	11.8	12.7
Delaware		11	5.5	6.4	Montgomery	13	9.9	9.4
Dickinson		11	6.4	7.0	O'Brien	15	8.8	9.2
Emmet		11	8.8	8.5	Page	12	6.4	6.0
Floyd		15	8.0	7.5	Palo Alto	6	5.3	5.1
Franklin		8	6.6	7.7	Poweshiek	13	6.2	5.7
Greene		6	5.3	6.5	Sac	8	6.1	6.4
Grundy		13	9.7	10.3	Shelby	11	7.5	7.5
Guthrie		11	8.9	8.5	Tama	23	11.7	11.6
Hamilton		17	9.5	9.2	Union	12	8.8	9.2
Hancock	10	7.4	7.3	Winnebago	9	6.9	7.2	
Hardin	16	7.7	6.6	Wright	9	5.7	5.5	
Harrison	17	10.2	10.2	Total	557	8.0	8.0	
Counties with Average Population > 20,000	Benton	14	5.3	5.5	Jones	15	6.8	6.6
	Boone	19	6.7	6.6	Lee	43	10.1	10.3
	Bremer	14	5.5	5.2	Mahaska	14	5.8	5.9
	Buchanan	23	9.9	10.3	Marion	27	7.9	8.2
	Buena Vista	12	5.4	5.8	Marshall	37	8.7	8.9
	Carroll	16	6.7	6.4	Muscatine	33	7.3	7.3
	Cerro Gordo	38	7.4	7.6	Plymouth	15	5.6	6.0
	Clinton	38	6.8	6.5	Sioux	11	3.2	2.8
	Des Moines	57	12.1	11.8	Story	34	4.0	4.3
	Fayette	11	4.5	4.8	Wapello	49	12.4	12.1
	Henry	13	5.9	5.6	Washington	19	8.5	8.3
	Jackson	15	6.8	6.8	Webster	35	8.0	7.9
	Jasper	19	4.8	4.6	Winneshiek	10	4.3	4.3
					Total	631	7.0	6.9
MSA Counties	Black Hawk	98	7.0	6.8	Polk	333	8.6	8.6
	Dallas	37	9.7	9.9	Pottawattamie	98	10.5	10.6
	Dubuque	68	7.0	7.0	Scott	107	6.2	6.4
	Johnson	50	4.4	4.2	Warren	33	7.8	7.9
	Linn	130	6.5	6.5	Woodbury	75	6.7	6.6
					Total	1,029	7.4	7.2
State Totals		2,380	7.6	7.4				

¹Rates per 100,000 population²Adjusted to Year 2000 population

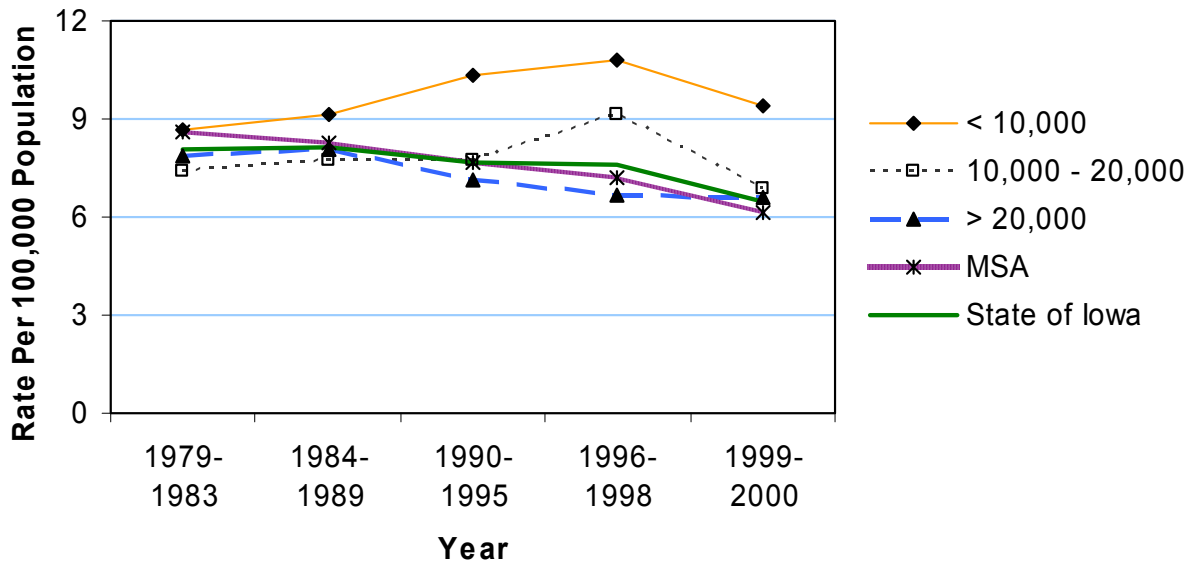
Source: Iowa Department of Public Health via Iowa Cancer Registry

Firearms Mortality by County Group 1979-2000

Crude Rates



Age-Adjusted Rates



Falls Mortality 1990-2000

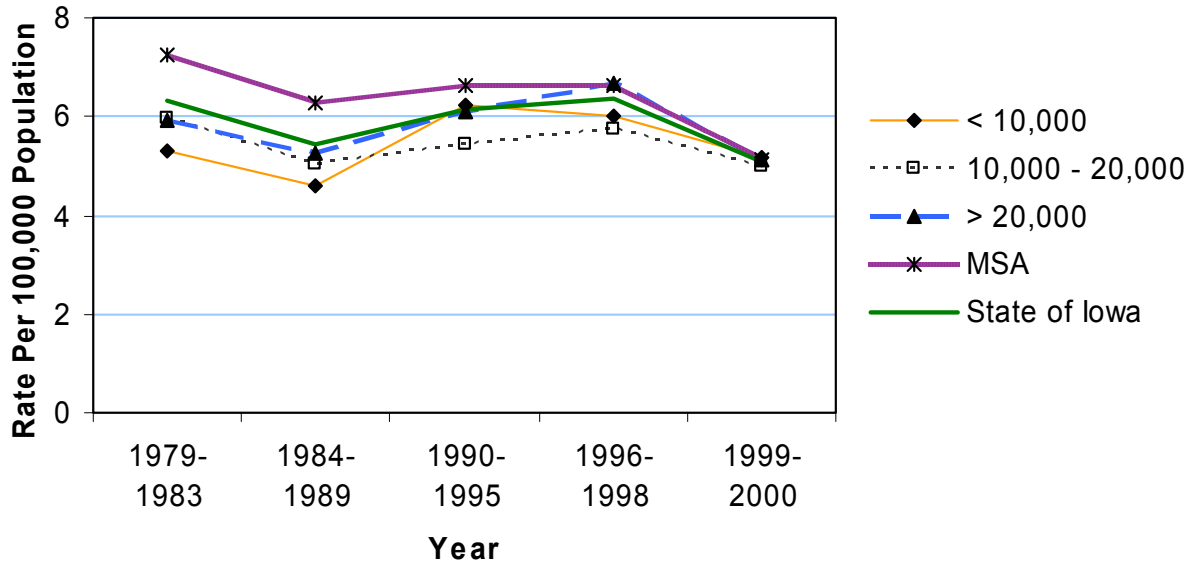
	County	#	Crude ¹	Adjusted ^{1,2}	County	#	Crude ¹	Adjusted ^{1,2}
Counties with Average Population < 10,000	Adair	14	15.2	6.5	Lucas	8	7.8	4.5
	Adams	11	21.7	11.6	Monroe	7	7.8	4.7
	Audubon	10	13.0	8.2	Osceola	*	*	*
	Clarke	8	8.4	4.8	Pocahontas	12	12.0	7.0
	Davis	10	10.8	6.9	Ringgold	5	8.4	4.2
	Decatur	13	14.1	10.3	Taylor	6	7.8	3.5
	Fremont	7	7.8	5.1	Van Buren	8	9.4	6.0
	Howard	11	10.1	5.1	Wayne	11	14.4	6.1
	Ida	14	15.6	8.5	Worth	10	11.4	6.2
					Total	165	10.7	6.0
	Counties with Average Population 10,000 to 20,000	Allamakee	13	8.2	5.3	Humboldt	13	11.2
Appanoose		18	11.9	8.3	Iowa	13	7.8	5.0
Butler		11	6.4	4.0	Jefferson	10	5.5	4.8
Calhoun		21	16.7	9.0	Keokuk	17	13.4	6.9
Cass		18	10.9	5.8	Kossuth	13	6.6	3.8
Cedar		21	10.7	7.1	Louisa	7	5.3	4.6
Cherokee		11	7.3	4.9	Lyon	13	10.0	6.0
Chickasaw		6	4.1	3.0	Madison	12	8.2	6.1
Clay		12	6.2	4.2	Mills	8	5.3	5.0
Clayton		18	8.7	6.2	Mitchell	7	5.8	3.3
Crawford		14	7.6	5.0	Monona	10	9.0	5.2
Delaware		11	5.5	4.4	Montgomery	25	19.1	9.9
Dickinson		15	8.7	5.2	O'Brien	12	7.0	4.1
Emmet		14	11.2	5.9	Page	16	8.6	4.8
Floyd		9	4.8	2.7	Palo Alto	12	10.5	6.0
Franklin		8	6.6	4.4	Poweshiek	31	14.9	9.8
Greene		15	13.3	7.9	Sac	15	11.4	5.2
Grundy		12	8.9	5.3	Shelby	9	6.2	3.3
Guthrie		12	9.7	5.7	Tama	11	5.6	3.5
Hamilton		9	5.0	3.3	Union	18	13.1	8.3
Hancock	10	7.4	5.1	Winnebago	6	4.6	3.3	
Hardin	20	9.6	4.9	Wright	17	10.7	5.5	
Harrison	19	11.4	7.3	Total	612	8.7	5.4	
Counties with Average Population > 20,000	Benton	14	5.3	4.3	Jones	15	6.8	5.2
	Boone	28	9.9	6.5	Lee	30	7.0	5.4
	Bremer	17	6.7	5.5	Mahaska	27	11.2	8.1
	Buchanan	15	6.5	5.8	Marion	31	9.1	6.6
	Buena Vista	10	4.5	2.9	Marshall	44	10.3	7.4
	Carroll	22	9.3	6.2	Muscatine	26	5.7	5.4
	Cerro Gordo	23	4.5	3.4	Plymouth	12	4.5	3.4
	Clinton	35	6.2	5.0	Sioux	27	7.9	6.3
	Des Moines	37	7.9	6.0	Story	45	5.3	6.0
	Fayette	20	8.2	6.2	Wapello	34	8.6	6.2
	Henry	19	8.7	6.5	Washington	33	14.8	8.6
	Jackson	14	6.3	5.1	Webster	73	16.6	11.1
	Jasper	34	8.6	6.8	Winneshiek	18	7.7	5.4
					Total	703	7.8	6.1
MSA Counties	Black Hawk	83	5.9	5.5	Polk	293	7.6	8.4
	Dallas	21	5.5	5.1	Pottawattamie	48	5.1	5.1
	Dubuque	47	4.8	4.2	Scott	85	5.0	5.5
	Johnson	37	3.2	5.0	Warren	29	6.8	7.0
	Linn	125	6.3	6.4	Woodbury	84	7.5	6.8
State Totals	2,332	7.4	6.0	Total	852	6.1	6.3	

¹Rates per 100,000 population²Adjusted to Year 2000 population

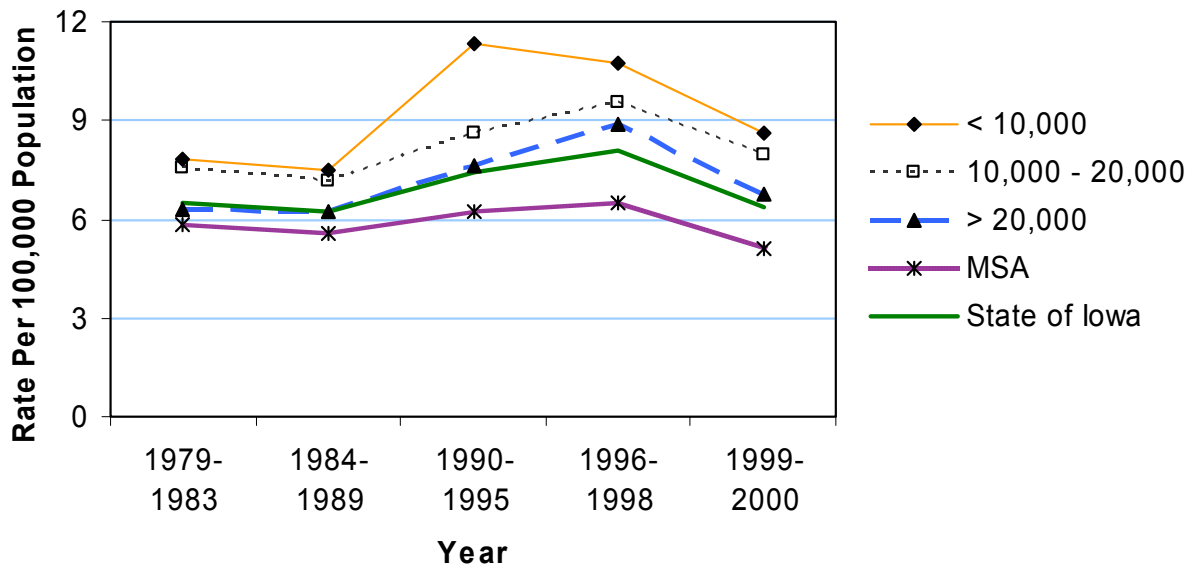
Source: Iowa Department of Public Health via Iowa Cancer Registry

Falls Mortality by County Group 1979-2000

Age-Adjusted Rates



Crude Rates



Homicide Mortality 1990-2000

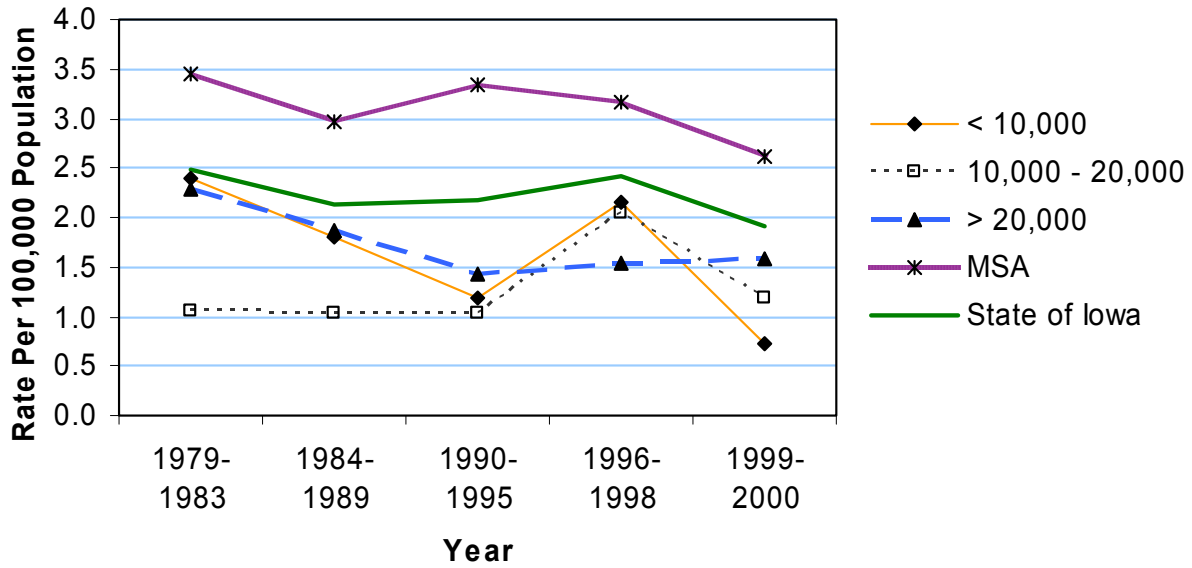
	County	#	Crude ¹	Adjusted ^{1,2}	County	#	Crude ¹	Adjusted ^{1,2}
Counties with Average Population < 10,000	Adair	*	*	*	Lucas	*	*	*
	Adams	*	*	*	Monroe	*	*	*
	Audubon	*	*	*	Osceola	*	*	*
	Clarke	*	*	*	Pocahontas	*	*	*
	Davis	*	*	*	Ringgold	*	*	*
	Decatur	*	*	*	Taylor	*	*	*
	Fremont	*	*	*	Van Buren	*	*	*
	Howard	*	*	*	Wayne	*	*	*
	Ida	*	*	*	Worth	*	*	*
					Total	21	1.4	1.4
Counties with Average Population 10,000 to 20,000	Allamakee	*	*	*	Humboldt	*	*	*
	Appanoose	*	*	*	Iowa	*	*	*
	Butler	*	*	*	Jefferson	*	*	*
	Calhoun	*	*	*	Keokuk	*	*	*
	Cass	*	*	*	Kossuth	*	*	*
	Cedar	5	2.6	2.7	Louisa	*	*	*
	Cherokee	*	*	*	Lyon	*	*	*
	Chickasaw	*	*	*	Madison	*	*	*
	Clay	*	*	*	Mills	*	*	*
	Clayton	*	*	*	Mitchell	*	*	*
	Crawford	*	*	*	Monona	*	*	*
	Delaware	*	*	*	Montgomery	*	*	*
	Dickinson	*	*	*	O'Brien	5	2.9	3.4
	Emmet	*	*	*	Page	*	*	*
	Floyd	*	*	*	Palo Alto	*	*	*
	Franklin	5	4.1	4.2	Poweshiek	*	*	*
	Greene	*	*	*	Sac	*	*	*
	Grundy	*	*	*	Shelby	*	*	*
	Guthrie	*	*	*	Tama	9	4.6	5.2
	Hamilton	*	*	*	Union	6	4.4	4.9
Hancock	*	*	*	Winnebago	*	*	*	
Hardin	6	2.9	2.9	Wright	*	*	*	
Harrison	*	*	*	Total	93	1.3	1.5	
Counties with Average Population > 20,000	Benton	*	*	*	Jones	*	*	*
	Boone	*	*	*	Lee	10	2.3	2.3
	Bremer	*	*	*	Mahaska	*	*	*
	Buchanan	*	*	*	Marion	7	2.1	2.0
	Buena Vista	*	*	*	Marshall	8	1.9	2.0
	Carroll	*	*	*	Muscatine	8	1.8	1.7
	Cerro Gordo	15	2.9	3.2	Plymouth	*	*	*
	Clinton	7	1.2	1.2	Sioux	5	1.5	1.5
	Des Moines	10	2.1	2.2	Story	7	0.8	1.1
	Fayette	*	*	*	Wapello	14	3.5	3.7
	Henry	*	*	*	Washington	*	*	*
	Jackson	*	*	*	Webster	13	3.0	3.1
	Jasper	*	*	*	Winneshiek	*	*	*
					Total	133	1.5	1.5
MSA Counties	Black Hawk	36	2.6	2.5	Polk	195	5.0	4.9
	Dallas	8	2.1	2.2	Pottawattamie	46	4.9	5.0
	Dubuque	8	0.8	0.9	Scott	46	2.7	2.6
	Johnson	22	1.9	1.9	Warren	9	2.1	2.0
	Linn	37	1.9	1.8	Woodbury	34	3.0	3.0
					Total	441	3.2	3.1
State Totals	688	2.2	2.2					

¹Rates per 100,000 population²Adjusted to Year 2000 population

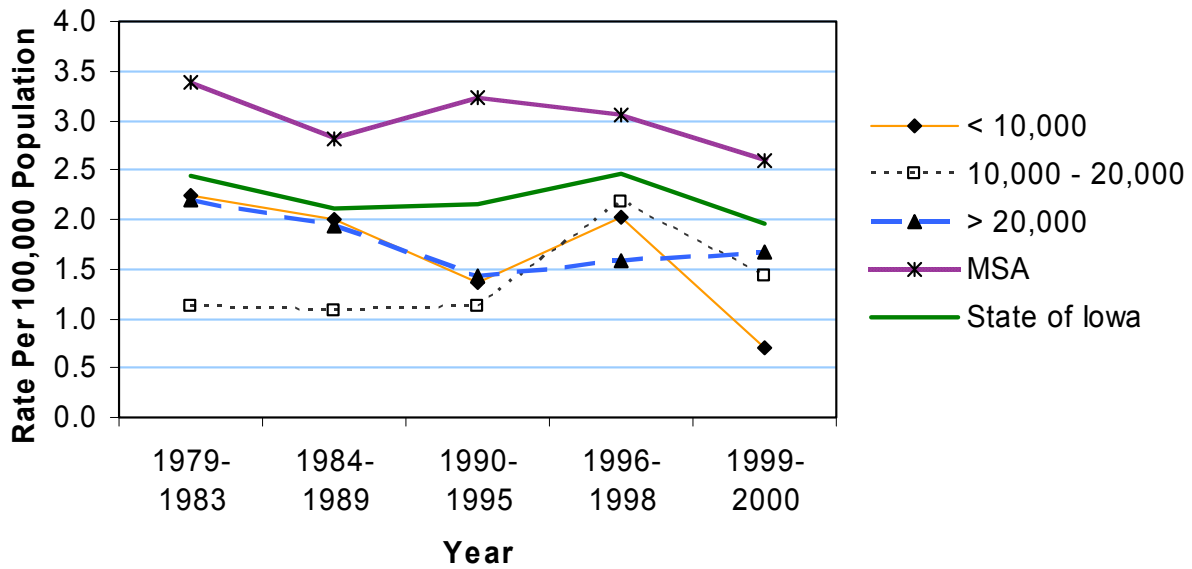
Source: Iowa Department of Public Health via Iowa Cancer Registry

Homicide Mortality by County Group 1979-2000

Crude Rates



Age-Adjusted Rates



Poisoning Mortality 1990-2000

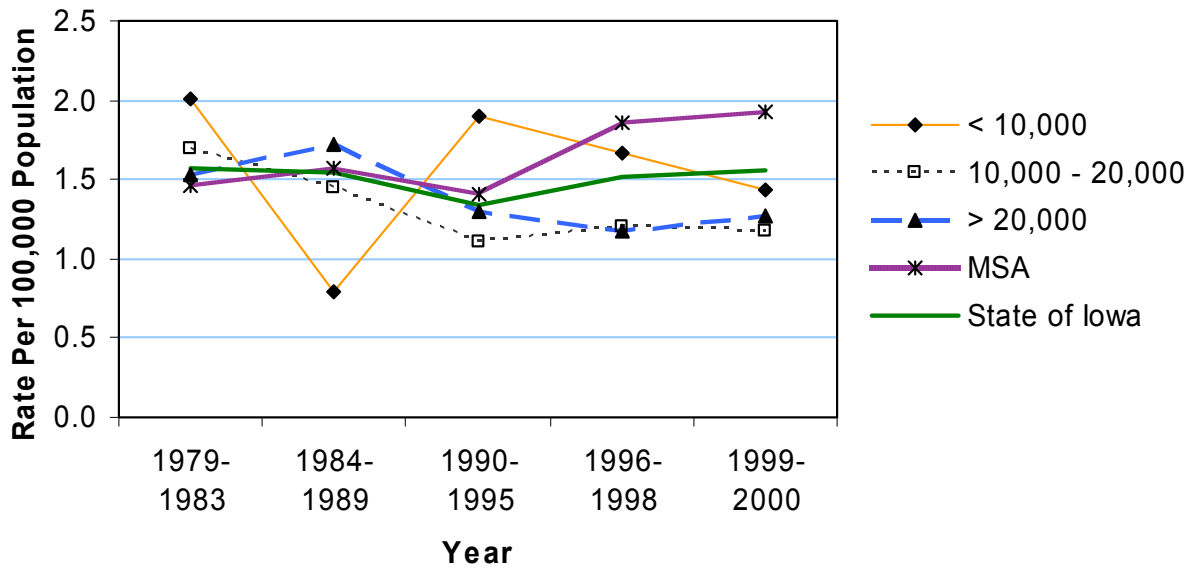
	County	#	Crude ¹	Adjusted ^{1,2}	County	#	Crude ¹	Adjusted ^{1,2}
Counties with Average Population < 10,000	Adair	*	*	*	Lucas	*	*	*
	Adams	*	*	*	Monroe	*	*	*
	Audubon	*	*	*	Osceola	*	*	*
	Clarke	*	*	*	Pocahontas	*	*	*
	Davis	*	*	*	Ringgold	*	*	*
	Decatur	6	6.5	6.2	Taylor	*	*	*
	Fremont	*	*	*	Van Buren	*	*	*
	Howard	*	*	*	Wayne	*	*	*
	Ida	*	*	*	Worth	*	*	*
					Total	27	1.7	1.7
Average Population 10,000 to 20,000	Allamakee	*	*	*	Humboldt	*	*	*
	Appanoose	*	*	*	Iowa	*	*	*
	Butler	*	*	*	Jefferson	*	*	*
	Calhoun	*	*	*	Keokuk	*	*	*
	Cass	*	*	*	Kossuth	*	*	*
	Cedar	*	*	*	Louisa	*	*	*
	Cherokee	5	3.3	2.7	Lyon	*	*	*
	Chickasaw	*	*	*	Madison	*	*	*
	Clay	*	*	*	Mills	*	*	*
	Clayton	*	*	*	Mitchell	*	*	*
	Crawford	*	*	*	Monona	*	*	*
	Delaware	*	*	*	Montgomery	*	*	*
	Dickinson	*	*	*	O'Brien	*	*	*
	Emmet	*	*	*	Page	*	*	*
	Floyd	*	*	*	Palo Alto	*	*	*
	Franklin	*	*	*	Poweshiek	*	*	*
	Greene	*	*	*	Sac	*	*	*
	Grundy	*	*	*	Shelby	*	*	*
	Guthrie	*	*	*	Tama	*	*	*
	Hamilton	*	*	*	Union	*	*	*
Hancock	*	*	*	Winnebago	*	*	*	
Hardin	7	3.4	3.5	Wright	*	*	*	
Harrison	*	*	*	Total	80	1.1	1.0	
Counties with Average Population > 20,000	Benton	*	*	*	Jones	*	*	*
	Boone	*	*	*	Lee	*	*	*
	Bremer	*	*	*	Mahaska	6	2.5	2.5
	Buchanan	*	*	*	Marion	*	*	*
	Buena Vista	*	*	*	Marshall	9	2.1	2.0
	Carroll	*	*	*	Muscatine	*	*	*
	Cerro Gordo	8	1.5	1.5	Plymouth	*	*	*
	Clinton	5	0.9	0.8	Sioux	*	*	*
	Des Moines	10	2.1	2.1	Story	9	1.1	1.1
	Fayette	9	3.7	3.5	Wapello	10	2.5	2.6
	Henry	*	*	*	Washington	*	*	*
	Jackson	*	*	*	Webster	*	*	*
	Jasper	6	1.5	1.5	Winneshiek	*	*	*
					Total	113	1.3	1.2
MSA Counties	Black Hawk	18	1.3	1.3	Polk	72	1.9	1.8
	Dallas	*	*	*	Pottawattamie	22	2.4	2.4
	Dubuque	*	*	*	Scott	28	1.6	1.7
	Johnson	18	1.6	1.5	Warren	*	*	*
	Linn	33	1.7	1.6	Woodbury	27	2.4	2.4
					Total	228	1.6	1.6
State Totals	448	1.4	1.4					

¹Rates per 100,000 population²Adjusted to Year 2000 population

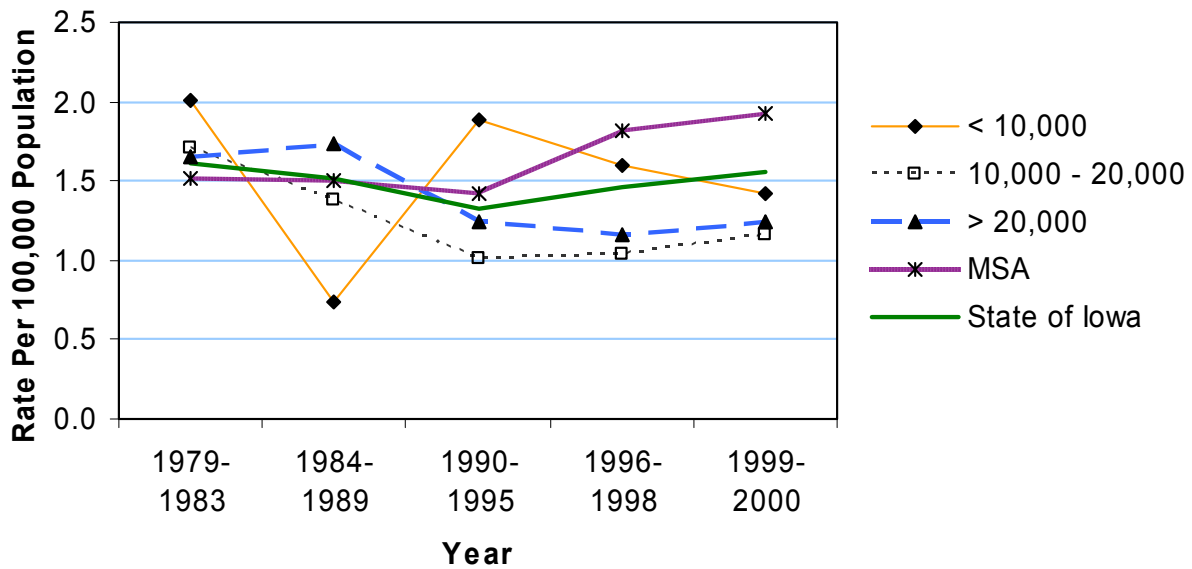
Source: Iowa Department of Public Health via Iowa Cancer Registry

Poisoning Mortality by County Group 1979-2000

Crude Rates



Age-Adjusted Rates



Burns Mortality 1990-2000

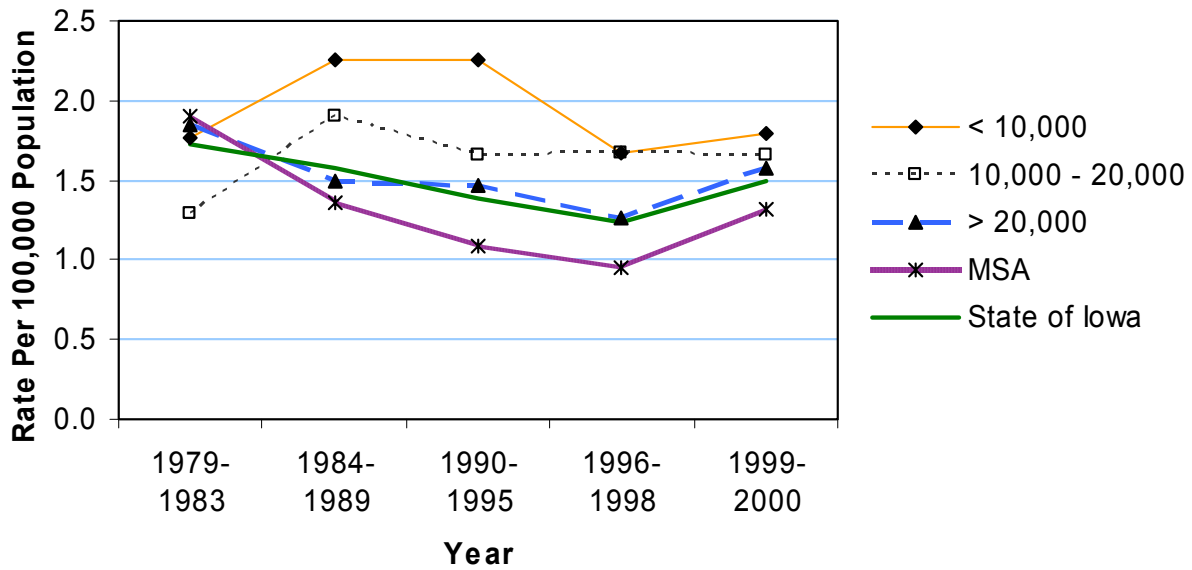
	County	#	Crude ¹	Adjusted ^{1,2}	County	#	Crude ¹	Adjusted ^{1,2}
Counties with Average Population < 10,000	Adair	*	*	*	Lucas	5	4.9	4.1
	Adams	*	*	*	Monroe	*	*	*
	Audubon	*	*	*	Osceola	*	*	*
	Clarke	*	*	*	Pocahontas	*	*	*
	Davis	*	*	*	Ringgold	*	*	*
	Decatur	*	*	*	Taylor	*	*	*
	Fremont	*	*	*	Van Buren	*	*	*
	Howard	*	*	*	Wayne	*	*	*
	Ida	*	*	*	Worth	*	*	*
					Total	31	2.0	1.7
Counties with Average Population 10,000 to 20,000	Allamakee	*	*	*	Humboldt	*	*	*
	Appanoose	*	*	*	Iowa	*	*	*
	Butler	*	*	*	Jefferson	*	*	*
	Calhoun	*	*	*	Keokuk	*	*	*
	Cass	5	3.0	2.4	Kossuth	*	*	*
	Cedar	*	*	*	Louisa	5	3.8	3.7
	Cherokee	*	*	*	Lyon	*	*	*
	Chickasaw	7	4.8	4.1	Madison	7	4.8	4.3
	Clay	*	*	*	Mills	*	*	*
	Clayton	*	*	*	Mitchell	*	*	*
	Crawford	*	*	*	Monona	*	*	*
	Delaware	*	*	*	Montgomery	5	3.8	4.1
	Dickinson	*	*	*	O'Brien	*	*	*
	Emmet	*	*	*	Page	*	*	*
	Floyd	*	*	*	Palo Alto	*	*	*
	Franklin	*	*	*	Poweshiek	*	*	*
	Greene	*	*	*	Sac	6	4.6	5.1
	Grundy	*	*	*	Shelby	*	*	*
	Guthrie	*	*	*	Tama	*	*	*
	Hamilton	*	*	*	Union	*	*	*
Hancock	*	*	*	Winnebago	11	8.5	7.8	
Hardin	*	*	*	Wright	*	*	*	
Harrison	*	*	*	Total	116	1.7	1.5	
Counties with Average Population > 20,000	Benton	*	*	*	Jones	*	*	*
	Boone	*	*	*	Lee	18	4.2	4.5
	Bremer	*	*	*	Mahaska	7	2.9	2.7
	Buchanan	*	*	*	Marion	*	*	*
	Buena Vista	5	2.2	2.2	Marshall	5	1.2	1.1
	Carroll	*	*	*	Muscatine	*	*	*
	Cerro Gordo	6	1.2	1.1	Plymouth	*	*	*
	Clinton	9	1.6	1.7	Sioux	*	*	*
	Des Moines	7	1.5	1.4	Story	7	0.8	0.9
	Fayette	*	*	*	Wapello	11	2.8	2.6
	Henry	*	*	*	Washington	5	2.2	2.1
	Jackson	*	*	*	Webster	6	1.4	1.4
	Jasper	7	1.8	1.5	Winneshiek	*	*	*
					Total	128	1.4	1.4
MSA Counties	Black Hawk	18	1.3	1.3	Polk	48	1.2	1.3
	Dallas	*	*	*	Pottawattamie	8	0.9	0.8
	Dubuque	6	0.6	0.6	Scott	20	1.2	1.2
	Johnson	13	1.1	1.5	Warren	*	*	*
	Linn	18	0.9	0.9	Woodbury	16	1.4	1.4
					Total	153	1.1	1.1
State Totals	428	1.4	1.3					

¹Rates per 100,000 population²Adjusted to Year 2000 population

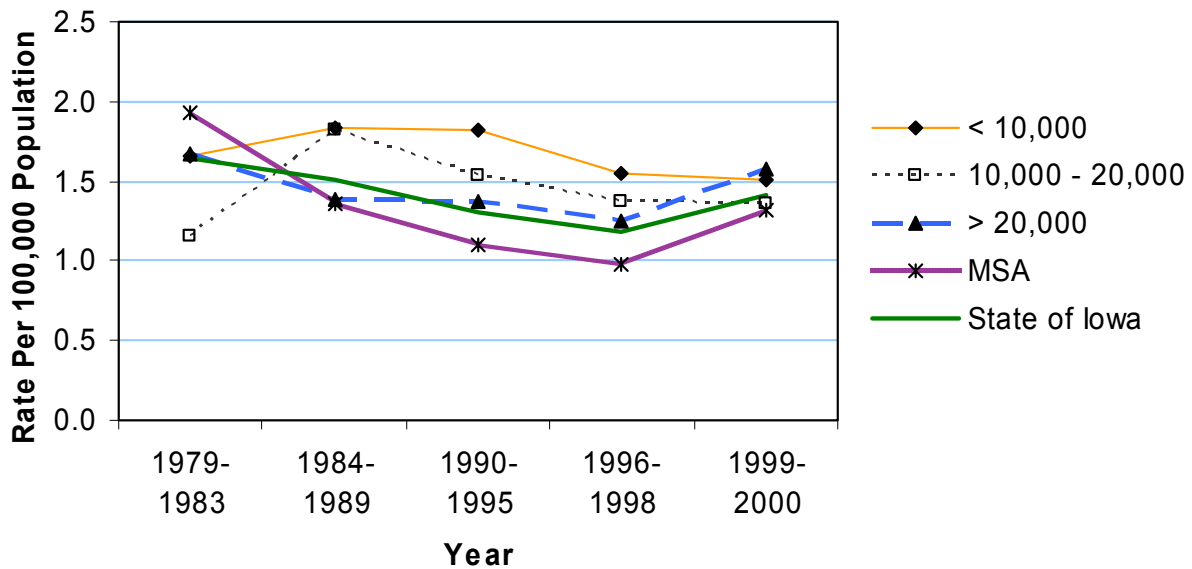
Source: Iowa Department of Public Health via Iowa Cancer Registry

Burns Mortality by County Group 1979-2000

Crude Rates



Age-Adjusted Rates



Drowning Mortality 1990-2000

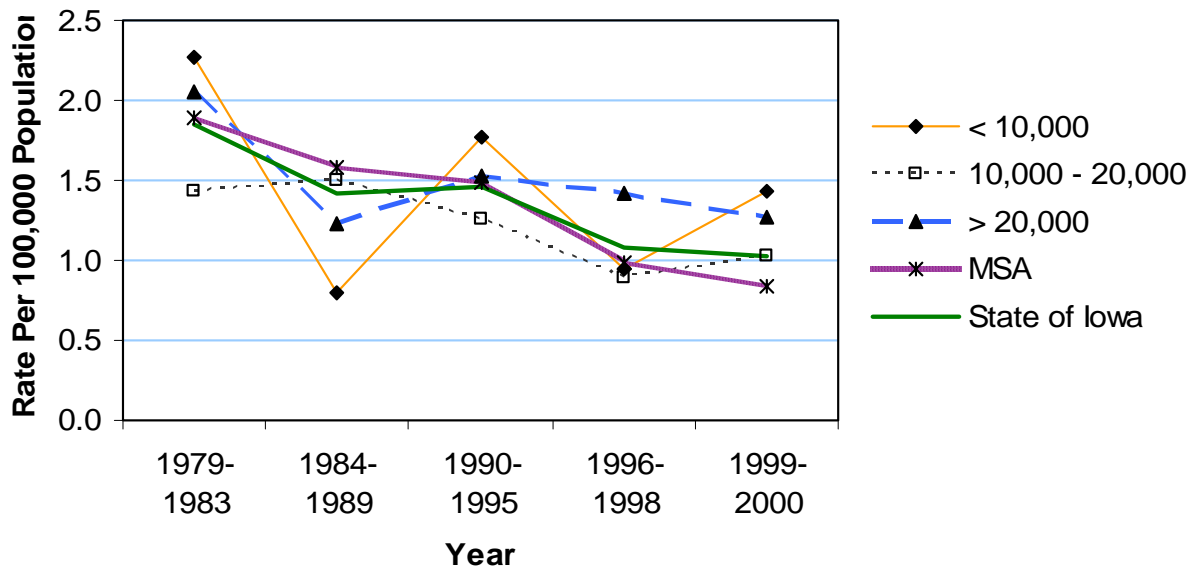
	County	#	Crude ¹	Adjusted ^{1,2}	County	#	Crude ¹	Adjusted ^{1,2}
Counties with Average Population < 10,000	Adair	*	*	*	Lucas	*	*	*
	Adams	*	*	*	Monroe	*	*	*
	Audubon	*	*	*	Osceola	*	*	*
	Clarke	*	*	*	Pocahontas	*	*	*
	Davis	*	*	*	Ringgold	*	*	*
	Decatur	*	*	*	Taylor	*	*	*
	Fremont	*	*	*	Van Buren	*	*	*
	Howard	*	*	*	Wayne	*	*	*
	Ida	*	*	*	Worth	*	*	*
					Total	23	1.5	1.6
Counties with Average Population 10,000 to 20,000	Allamakee	*	*	*	Humboldt	*	*	*
	Appanoose	*	*	*	Iowa	*	*	*
	Butler	*	*	*	Jefferson	*	*	*
	Calhoun	*	*	*	Keokuk	*	*	*
	Cass	*	*	*	Kossuth	*	*	*
	Cedar	*	*	*	Louisa	6	4.6	4.5
	Cherokee	*	*	*	Lyon	*	*	*
	Chickasaw	*	*	*	Madison	*	*	*
	Clay	*	*	*	Mills	*	*	*
	Clayton	*	*	*	Mitchell	*	*	*
	Crawford	*	*	*	Monona	*	*	*
	Delaware	5	2.5	2.4	Montgomery	5	3.8	3.8
	Dickinson	*	*	*	O'Brien	*	*	*
	Emmet	*	*	*	Page	*	*	*
	Floyd	*	*	*	Palo Alto	*	*	*
	Franklin	*	*	*	Poweshiek	*	*	*
	Greene	*	*	*	Sac	*	*	*
	Grundy	*	*	*	Shelby	*	*	*
	Guthrie	*	*	*	Tama	*	*	*
	Hamilton	*	*	*	Union	*	*	*
Hancock	*	*	*	Winnebago	*	*	*	
Hardin	*	*	*	Wright	*	*	*	
Harrison	*	*	*	Total	78	1.1	1.2	
Counties with Average Population > 20,000	Benton	*	*	*	Jones	6	2.7	2.8
	Boone	*	*	*	Lee	13	3.1	3.0
	Bremer	*	*	*	Mahaska	*	*	*
	Buchanan	5	2.2	2.3	Marion	6	1.8	1.8
	Buena Vista	*	*	*	Marshall	*	*	*
	Carroll	*	*	*	Muscatine	8	1.8	1.7
	Cerro Gordo	8	1.5	1.6	Plymouth	*	*	*
	Clinton	10	1.8	1.9	Sioux	*	*	*
	Des Moines	8	1.7	1.7	Story	6	0.7	0.8
	Fayette	*	*	*	Wapello	7	1.8	1.9
	Henry	*	*	*	Washington	*	*	*
	Jackson	5	2.3	2.1	Webster	10	2.3	2.5
	Jasper	9	2.3	2.4	Winneshiek	*	*	*
					Total	130	1.4	1.5
MSA Counties	Black Hawk	10	0.7	0.7	Polk	52	1.3	1.3
	Dallas	10	2.6	2.5	Pottawattamie	21	2.3	2.3
	Dubuque	10	1.0	1.1	Scott	19	1.1	1.1
	Johnson	12	1.1	1.1	Warren	*	*	*
	Linn	19	1.0	0.9	Woodbury	14	1.2	1.3
State Totals	402	1.3	1.3	Total	171	1.2	1.2	

¹Rates per 100,000 population²Adjusted to Year 2000 population

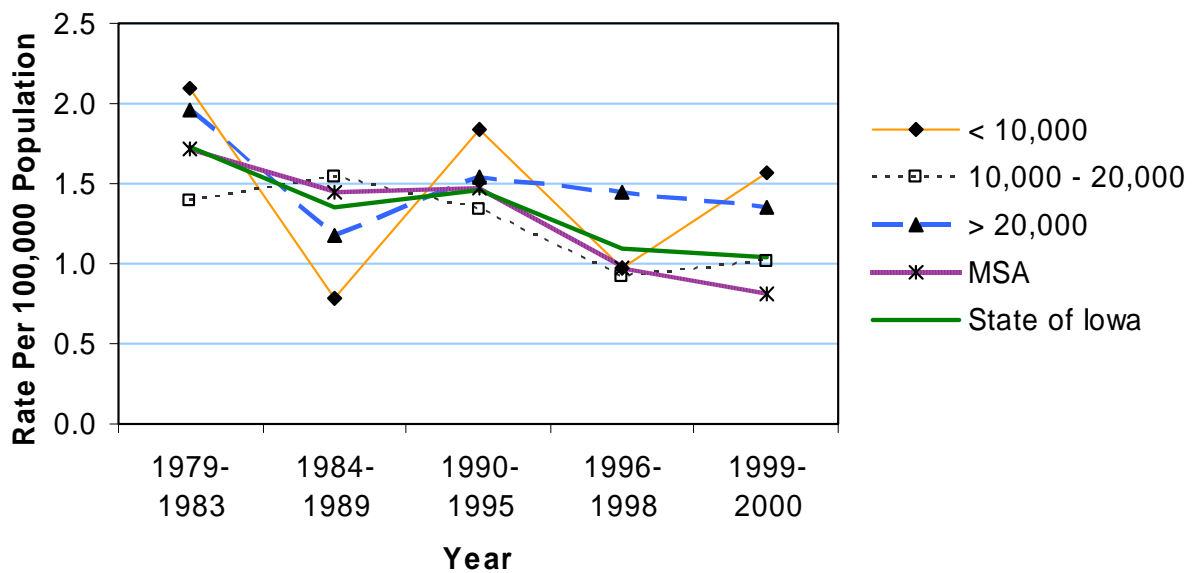
Source: Iowa Department of Public Health via Iowa Cancer Registry

Drowning Mortality by County Group 1979-2000

Crude Rates



Age-Adjusted Rates



All Other Unintentional Mortality 1990-2000

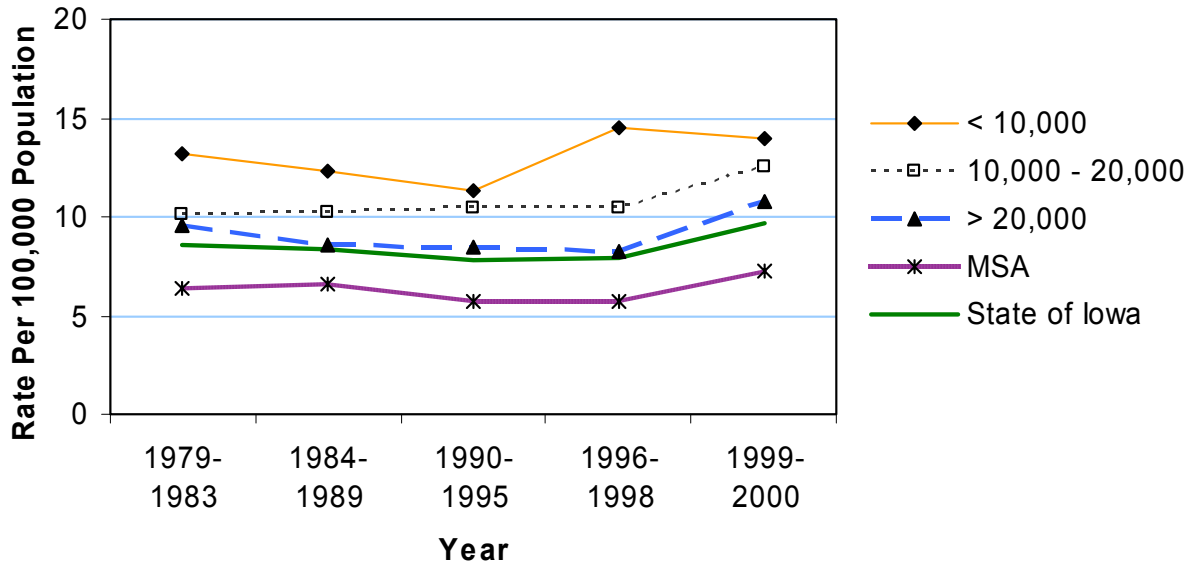
	Average Population < 10,000				Average Population 10,000 to 20,000				Average Population > 20,000				MSA Counties			
	County	#	Crude ¹ (Rank ³)	Adjusted ^{1,2} (Rank ³)	County	#	Crude ¹ (Rank ³)	Adjusted ^{1,2} (Rank ³)	County	#	Crude ¹ (Rank ³)	Adjusted ^{1,2} (Rank ³)	County	#	Crude ¹ (Rank ³)	Adjusted ^{1,2} (Rank ³)
Counties with Average Population < 10,000	Adair	10	10.9 (41)	8.3 (42)	Lucas	7	6.9 (83)	5.3 (91)	Lucas	7	6.9 (83)	5.3 (91)	Lucas	7	6.9 (83)	5.3 (91)
	Adams	7	13.8 (15)	9.8 (23)	Monroe	7	7.8 (74)	5.7 (88)	Monroe	7	7.8 (74)	5.7 (88)	Monroe	7	7.8 (74)	5.7 (88)
	Audubon	9	11.7 (32)	6.9 (67)	Osceola	5	6.3 (87)	5.3 (92)	Osceola	5	6.3 (87)	5.3 (92)	Osceola	5	6.3 (87)	5.3 (92)
	Clarke	15	15.8 (05)	14.0 (04)	Pocahontas	7	7.0 (81)	5.7 (86)	Pocahontas	7	7.0 (81)	5.7 (86)	Pocahontas	7	7.0 (81)	5.7 (86)
	Davis	14	15.1 (10)	12.1 (07)	Ringgold	10	16.8 (03)	14.0 (03)	Ringgold	10	16.8 (03)	14.0 (03)	Ringgold	10	16.8 (03)	14.0 (03)
	Decatur	20	21.7 (01)	17.5 (01)	Taylor	10	12.9 (24)	6.9 (68)	Taylor	10	12.9 (24)	6.9 (68)	Taylor	10	12.9 (24)	6.9 (68)
	Fremont	14	15.7 (07)	11.5 (11)	Van Buren	17	20.0 (02)	14.2 (02)	Van Buren	17	20.0 (02)	14.2 (02)	Van Buren	17	20.0 (02)	14.2 (02)
	Howard	13	11.9 (30)	8.7 (35)	Wayne	8	10.5 (47)	7.0 (65)	Wayne	8	10.5 (47)	7.0 (65)	Wayne	8	10.5 (47)	7.0 (65)
	Ida	12	13.4 (19)	11.0 (14)	Worth	11	12.6 (25)	8.6 (38)	Worth	11	12.6 (25)	8.6 (38)	Worth	11	12.6 (25)	8.6 (38)
					Total	196	12.7	9.5	Total	196	12.7	9.5	Total	196	12.7	9.5
	Counties with Average Population 10,000 to 20,000	Allamakee	17	10.8 (44)	8.0 (48)	Humboldt	10	8.6 (64)	5.9 (82)	Humboldt	10	8.6 (64)	5.9 (82)	Humboldt	10	8.6 (64)
Appanoose		9	5.9 (92)	5.1 (93)	Iowa	16	9.6 (54)	6.5 (73)	Iowa	16	9.6 (54)	6.5 (73)	Iowa	16	9.6 (54)	6.5 (73)
Butler		16	9.4 (55)	6.4 (77)	Jefferson	11	6.1 (90)	5.8 (83)	Jefferson	11	6.1 (90)	5.8 (83)	Jefferson	11	6.1 (90)	5.8 (83)
Calhoun		15	12.0 (29)	8.2 (46)	Keokuk	20	15.8 (06)	11.8 (09)	Keokuk	20	15.8 (06)	11.8 (09)	Keokuk	20	15.8 (06)	11.8 (09)
Cass		25	15.2 (09)	10.4 (20)	Kossuth	26	13.3 (21)	10.4 (21)	Kossuth	26	13.3 (21)	10.4 (21)	Kossuth	26	13.3 (21)	10.4 (21)
Cedar		14	7.1 (79)	5.4 (90)	Louisa	17	13.0 (22)	12.0 (08)	Louisa	17	13.0 (22)	12.0 (08)	Louisa	17	13.0 (22)	12.0 (08)
Cherokee		17	11.4 (36)	9.8 (24)	Lyon	8	6.1 (88)	4.7 (96)	Lyon	8	6.1 (88)	4.7 (96)	Lyon	8	6.1 (88)	4.7 (96)
Chickasaw		13	8.9 (62)	6.4 (76)	Madison	20	13.7 (16)	11.5 (10)	Madison	20	13.7 (16)	11.5 (10)	Madison	20	13.7 (16)	11.5 (10)
Clay		18	9.3 (56)	7.3 (57)	Mills	19	12.6 (26)	12.2 (06)	Mills	19	12.6 (26)	12.2 (06)	Mills	19	12.6 (26)	12.2 (06)
Clayton		26	12.5 (27)	10.1 (22)	Mitchell	16	13.3 (20)	10.8 (15)	Mitchell	16	13.3 (20)	10.8 (15)	Mitchell	16	13.3 (20)	10.8 (15)
Crawford		20	10.8 (43)	9.2 (30)	Monona	15	13.6 (17)	9.5 (28)	Monona	15	13.6 (17)	9.5 (28)	Monona	15	13.6 (17)	9.5 (28)
Delaware		17	8.4 (68)	7.6 (54)	Montgomery	17	13.0 (23)	8.4 (39)	Montgomery	17	13.0 (23)	8.4 (39)	Montgomery	17	13.0 (23)	8.4 (39)
Dickinson		20	11.6 (34)	8.4 (41)	O'Brien	20	11.7 (31)	8.6 (36)	O'Brien	20	11.7 (31)	8.6 (36)	O'Brien	20	11.7 (31)	8.6 (36)
Emmet		17	13.5 (18)	9.6 (26)	Page	31	16.6 (04)	10.5 (19)	Page	31	16.6 (04)	10.5 (19)	Page	31	16.6 (04)	10.5 (19)
Floyd		20	10.7 (46)	8.7 (34)	Palo Alto	11	9.6 (53)	7.5 (56)	Palo Alto	11	9.6 (53)	7.5 (56)	Palo Alto	11	9.6 (53)	7.5 (56)
Franklin		12	9.9 (51)	6.5 (72)	Poweshiek	16	7.7 (76)	5.8 (84)	Poweshiek	16	7.7 (76)	5.8 (84)	Poweshiek	16	7.7 (76)	5.8 (84)
Greene		10	8.8 (63)	7.1 (63)	Sac	11	8.4 (69)	5.9 (81)	Sac	11	8.4 (69)	5.9 (81)	Sac	11	8.4 (69)	5.9 (81)
Grundy		13	9.7 (52)	7.3 (58)	Shelby	21	14.4 (14)	9.8 (25)	Shelby	21	14.4 (14)	9.8 (25)	Shelby	21	14.4 (14)	9.8 (25)
Guthrie		6	4.9 (97)	3.0 (99)	Tama	16	8.2 (71)	5.5 (89)	Tama	16	8.2 (71)	5.5 (89)	Tama	16	8.2 (71)	5.5 (89)
Hamilton		11	6.1 (89)	4.7 (97)	Union	15	11.0 (40)	8.0 (47)	Union	15	11.0 (40)	8.0 (47)	Union	15	11.0 (40)	8.0 (47)
Hancock	12	8.9 (61)	7.7 (52)	Winnebago	20	15.4 (08)	11.2 (13)	Winnebago	20	15.4 (08)	11.2 (13)	Winnebago	20	15.4 (08)	11.2 (13)	
Hardin	31	14.9 (13)	10.7 (17)	Wright	18	11.3 (37)	8.8 (32)	Wright	18	11.3 (37)	8.8 (32)	Wright	18	11.3 (37)	8.8 (32)	
Harrison	25	15.0 (11)	11.2 (12)	Total	758	10.8	8.2	Total	758	10.8	8.2	Total	758	10.8	8.2	
Counties with Average Population > 20,000	Benton	24	9.1 (57)	7.9 (50)	Jones	19	8.6 (65)	7.9 (49)	Jones	19	8.6 (65)	7.9 (49)	Jones	19	8.6 (65)	7.9 (49)
	Boone	32	11.4 (35)	8.8 (33)	Lee	33	7.7 (75)	6.4 (75)	Lee	33	7.7 (75)	6.4 (75)	Lee	33	7.7 (75)	6.4 (75)
	Bremer	23	9.0 (59)	7.8 (51)	Mahaska	26	10.8 (45)	9.0 (31)	Mahaska	26	10.8 (45)	9.0 (31)	Mahaska	26	10.8 (45)	9.0 (31)
	Buchanan	27	11.7 (33)	10.8 (16)	Marion	51	15.0 (12)	12.8 (05)	Marion	51	15.0 (12)	12.8 (05)	Marion	51	15.0 (12)	12.8 (05)
	Buena Vista	19	8.5 (67)	7.1 (62)	Marshall	43	10.1 (49)	8.3 (43)	Marshall	43	10.1 (49)	8.3 (43)	Marshall	43	10.1 (49)	8.3 (43)
	Carroll	26	11.0 (39)	9.6 (27)	Muscatine	36	8.0 (72)	7.6 (53)	Muscatine	36	8.0 (72)	7.6 (53)	Muscatine	36	8.0 (72)	7.6 (53)
	Cerro Gordo	30	5.8 (93)	4.9 (94)	Plymouth	24	9.0 (60)	8.4 (40)	Plymouth	24	9.0 (60)	8.4 (40)	Plymouth	24	9.0 (60)	8.4 (40)
	Clinton	39	7.0 (82)	6.3 (79)	Sioux	24	7.0 (80)	6.8 (69)	Sioux	24	7.0 (80)	6.8 (69)	Sioux	24	7.0 (80)	6.8 (69)
	Des Moines	43	9.1 (58)	7.6 (55)	Story	46	5.4 (94)	6.3 (78)	Story	46	5.4 (94)	6.3 (78)	Story	46	5.4 (94)	6.3 (78)
	Fayette	20	8.2 (70)	6.2 (80)	Wapello	43	10.9 (42)	8.6 (37)	Wapello	43	10.9 (42)	8.6 (37)	Wapello	43	10.9 (42)	8.6 (37)
	Henry	27	12.3 (28)	10.6 (18)	Washington	23	10.3 (48)	7.1 (60)	Washington	23	10.3 (48)	7.1 (60)	Washington	23	10.3 (48)	7.1 (60)
	Jackson	22	9.9 (50)	8.3 (45)	Webster	49	11.2 (38)	9.3 (29)	Webster	49	11.2 (38)	9.3 (29)	Webster	49	11.2 (38)	9.3 (29)
	Jasper	31	7.9 (73)	7.3 (59)	Winneshiek	12	5.2 (96)	4.3 (98)	Winneshiek	12	5.2 (96)	4.3 (98)	Winneshiek	12	5.2 (96)	4.3 (98)
					Total	792	8.8	7.7	Total	792	8.8	7.7	Total	792	8.8	7.7
MSA Counties	Black Hawk	119	8.5 (66)	8.3 (44)	Polk	205	5.3 (95)	5.7 (87)	Polk	205	5.3 (95)	5.7 (87)	Polk	205	5.3 (95)	5.7 (87)
	Dallas	28	7.3 (77)	7.0 (64)	Pottawattamie	63	6.8 (84)	6.7 (70)	Pottawattamie	63	6.8 (84)	6.7 (70)	Pottawattamie	63	6.8 (84)	6.7 (70)
	Dubuque	62	6.4 (85)	5.7 (85)	Scott	103	6.0 (91)	6.5 (74)	Scott	103	6.0 (91)	6.5 (74)	Scott	103	6.0 (91)	6.5 (74)
	Johnson	55	4.8 (98)	7.1 (61)	Warren	27	6.4 (86)	6.5 (71)	Warren	27	6.4 (86)	6.5 (71)	Warren	27	6.4 (86)	6.5 (71)
	Linn	94	4.7 (99)	4.8 (95)	Woodbury	81	7.2 (78)	6.9 (66)	Woodbury	81	7.2 (78)	6.9 (66)	Woodbury	81	7.2 (78)	6.9 (66)
	State Totals	2,583	8.2	7.2	Total	837	6.0	6.2	Total	837	6.0	6.2	Total	837	6.0	6.2

¹Rates per 100,000 population
²Adjusted to Year 2000 population
³Rank among 99 Iowa counties

Source: Iowa Department of Public Health via Iowa Cancer Registry

All Other Unintentional Mortality by County Group 1979-2000

Crude Rates



Age-Adjusted Rates

