

Youth Injury Mortality

Injuries remain the leading cause of death in persons age 1-34 years and contribute the most to years of life lost (YLL), particularly for those events of pre-adult ages. Deaths from unintentional injuries, homicides and suicides are important public health problems in those 15-24 years of age and many of these deaths are preventable.

Transportation fatalities accounted for 377 deaths for youth aged 0-14 from 1990-2000. Of these, 90% were due to motor vehicle traffic death. In the 15-19 age range, 800 transportation deaths occurred over this same period with 97% accounted for by motor vehicle traffic deaths. In general, transportation mortality rates are higher in the more rural counties for both age groups. For 15-19 year-olds, the mortality rate was drastically higher in rural counties for the 1996-2000 time period. Tables for suicide and homicide are not presented due to the small number of events in both age ranges.

The source of the cause of death data is obtained from death certificates filed at the Iowa Department of Public Health. Analysis was done by the State Health Registry of Iowa at the University of Iowa. Age-adjusted rates were calculated using the Year 2000 U.S. population distribution.

Note that the crude and age-adjusted rates displayed in the graphs for ages 15-19 are identical to one another. This is because only one age group in the age-adjustment analysis is represented. The crude and age-adjusted rates for the 0-14 age group show slight differences as this represents four age groups (<1, 1-4, 5-9, and 10-14) in the age-adjustment analysis.

HIGHLIGHTS...

- ✓ Unintentional injuries, homicides, and suicides are important public health problems in those 15-24 years of age.
- ✓ Injuries contribute the most to years of life lost (YLL).
- ✓ Motor vehicle deaths accounted for 97% of all transportation deaths in youth aged 15-19 in Iowa.

Age 0-14: All Transportation Mortality 1990-2000

	County	#	Crude ¹	Adjusted ^{1,2}	County	#	Crude ¹	Adjusted ^{1,2}
Counties with Average Population < 10,000	Adair	*	*	*	Lucas	*	*	*
	Adams	*	*	*	Monroe	*	*	*
	Audubon	*	*	*	Osceola	*	*	*
	Clarke	*	*	*	Pocahontas	*	*	*
	Davis	*	*	*	Ringgold	*	*	*
	Decatur	*	*	*	Taylor	*	*	*
	Fremont	*	*	*	Van Buren	*	*	*
	Howard	*	*	*	Wayne	*	*	*
	Ida	*	*	*	Worth	*	*	*
					Total	27	8.5	8.4
Counties with Average Population 10,000 to 20,000	Allamakee	*	*	*	Humboldt	*	*	*
	Appanoose	*	*	*	Iowa	*	*	*
	Butler	*	*	*	Jefferson	*	*	*
	Calhoun	*	*	*	Keokuk	*	*	*
	Cass	*	*	*	Kossuth	*	*	*
	Cedar	*	*	*	Louisa	*	*	*
	Cherokee	*	*	*	Lyon	*	*	*
	Chickasaw	*	*	*	Madison	*	*	*
	Clay	*	*	*	Mills	*	*	*
	Clayton	5	11.2	11.1	Mitchell	*	*	*
	Crawford	6	15.1	15.4	Monona	*	*	*
	Delaware	*	*	*	Montgomery	*	*	*
	Dickinson	*	*	*	O'Brien	*	*	*
	Emmet	*	*	*	Page	*	*	*
	Floyd	*	*	*	Palo Alto	5	21.5	20.6
	Franklin	*	*	*	Poweshiek	*	*	*
	Greene	*	*	*	Sac	5	18.3	16.8
	Grundy	*	*	*	Shelby	*	*	*
	Guthrie	*	*	*	Tama	*	*	*
	Hamilton	*	*	*	Union	*	*	*
Hancock	*	*	*	Winnebago	6	23.0	22.0	
Hardin	*	*	*	Wright	*	*	*	
Harrison	*	*	*	Total	113	7.7	7.6	
Counties with Average Population > 20,000	Benton	*	*	*	Jones	*	*	*
	Boone	12	20.9	21.1	Lee	7	8.0	8.0
	Bremer	*	*	*	Mahaska	5	9.6	9.6
	Buchanan	*	*	*	Marion	*	*	*
	Buena Vista	*	*	*	Marshall	6	6.9	6.9
	Carroll	*	*	*	Muscatine	11	10.7	10.7
	Cerro Gordo	*	*	*	Plymouth	*	*	*
	Clinton	*	*	*	Sioux	7	8.7	8.6
	Des Moines	5	5.1	5.2	Story	*	*	*
	Fayette	*	*	*	Wapello	10	12.9	12.9
	Henry	5	11.2	11.2	Washington	*	*	*
	Jackson	*	*	*	Webster	7	7.6	7.6
	Jasper	*	*	*	Winneshiek	*	*	*
					Total	112	6.0	6.0
MSA Counties	Black Hawk	13	4.7	4.6	Polk	28	3.4	3.4
	Dallas	6	6.7	6.7	Pottawattamie	9	4.4	4.4
	Dubuque	8	3.8	3.8	Scott	14	3.6	3.6
	Johnson	7	3.6	3.6	Warren	*	*	*
	Linn	21	5.0	5.0	Woodbury	15	5.8	5.8
State Totals	377	5.7	5.7	Total	125	4.2	4.2	

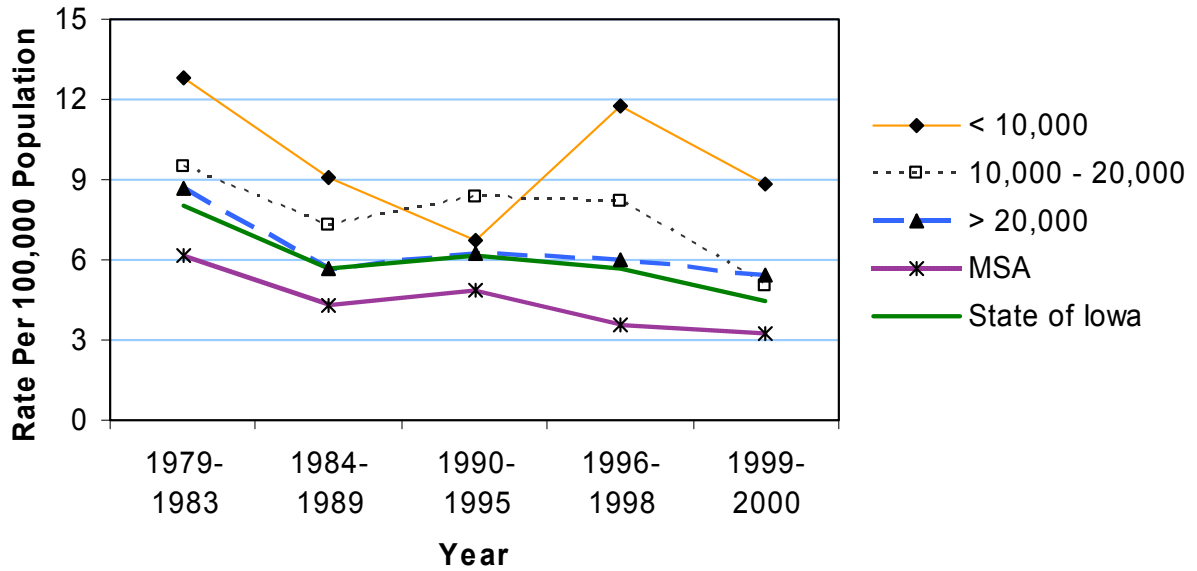
¹Rates per 100,000 population

²Adjusted to Year 2000 population

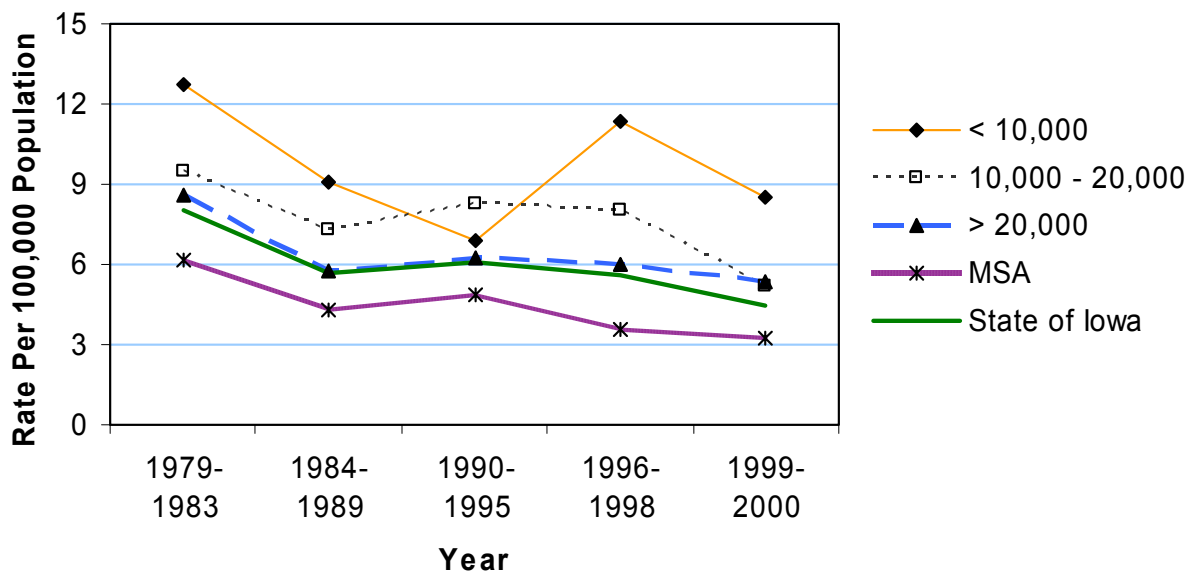
Source: Iowa Department of Public Health via Iowa Cancer Registry

Age 0-14: All Transportation Mortality by County Group 1979-2000

Crude Rates



Age-Adjusted Rates



Age 15-19: All Transportation Mortality 1990-2000

	County	#	Crude ¹	Adjusted ^{1,2}	County	#	Crude ¹	Adjusted ^{1,2}
Counties with Average Population < 10,000	Adair	7	115.2	115.2	Lucas	*	*	*
	Adams	*	*	*	Monroe	*	*	*
	Audubon	*	*	*	Osceola	*	*	*
	Clarke	*	*	*	Pocahontas	*	*	*
	Davis	6	89.8	89.8	Ringgold	*	*	*
	Decatur	6	64.8	64.8	Taylor	*	*	*
	Fremont	7	114.9	114.9	Van Buren	*	*	*
	Howard	*	*	*	Wayne	12	251.9	251.9
	Ida	7	111.8	111.8	Worth	*	*	*
					Total	71	66.5	66.5
Counties with Average Population 10,000 to 20,000	Allamakee	9	82.6	82.6	Humboldt	*	*	*
	Appanoose	6	57.4	57.4	Iowa	*	*	*
	Butler	9	75.4	75.4	Jefferson	7	56.6	56.6
	Calhoun	*	*	*	Keokuk	8	90.0	90.0
	Cass	9	81.3	81.3	Kossuth	12	83.7	83.7
	Cedar	5	37.1	37.1	Louisa	6	64.0	64.0
	Cherokee	5	46.4	46.4	Lyon	7	72.1	72.1
	Chickasaw	5	45.9	45.9	Madison	9	84.8	84.8
	Clay	*	*	*	Mills	8	70.3	70.3
	Clayton	19	127.8	127.8	Mitchell	6	71.3	71.3
	Crawford	8	52.7	52.7	Monona	6	85.3	85.3
	Delaware	14	90.5	90.5	Montgomery	6	67.4	67.4
	Dickinson	*	*	*	O'Brien	8	64.3	64.3
	Emmet	*	*	*	Page	5	38.1	38.1
	Floyd	*	*	*	Palo Alto	6	63.5	63.5
	Franklin	*	*	*	Poweshiek	7	38.4	38.4
	Greene	*	*	*	Sac	*	*	*
	Grundy	*	*	*	Shelby	*	*	*
	Guthrie	*	*	*	Tama	10	72.8	72.8
	Hamilton	*	*	*	Union	7	66.6	66.6
Hancock	7	71.0	71.0	Winnebago	*	*	*	
Hardin	*	*	*	Wright	5	49.3	49.3	
Harrison	7	60.1	60.1	Total	262	52.2	52.2	
Counties with Average Population > 20,000	Benton	9	50.4	50.4	Jones	11	73.7	73.7
	Boone	*	*	*	Lee	11	38.5	38.5
	Bremer	5	22.3	22.3	Mahaska	*	*	*
	Buchanan	8	44.4	44.4	Marion	6	22.1	22.1
	Buena Vista	5	26.8	26.8	Marshall	8	26.7	26.7
	Carroll	12	69.0	69.0	Muscatine	9	27.3	27.3
	Cerro Gordo	14	37.6	37.6	Plymouth	7	32.7	32.7
	Clinton	14	34.9	34.9	Sioux	19	55.9	55.9
	Des Moines	10	30.2	30.2	Story	8	8.7	8.7
	Fayette	8	44.2	44.2	Wapello	10	35.3	35.3
	Henry	9	56.3	56.3	Washington	5	34.5	34.5
	Jackson	13	80.8	80.8	Webster	6	18.7	18.7
	Jasper	9	34.6	34.6	Winneshiek	5	21.3	21.3
				Total	228	32.8	32.8	
MSA Counties	Black Hawk	19	16.4	16.4	Polk	62	24.1	24.1
	Dallas	7	27.4	27.4	Pottawattamie	19	27.9	27.9
	Dubuque	24	31.2	31.2	Scott	27	21.9	21.9
	Johnson	17	15.7	15.7	Warren	6	17.3	17.3
	Linn	37	25.7	25.7	Woodbury	21	25.0	25.0
State Totals	800	34.1	34.1	Total	239	23.0	23.0	

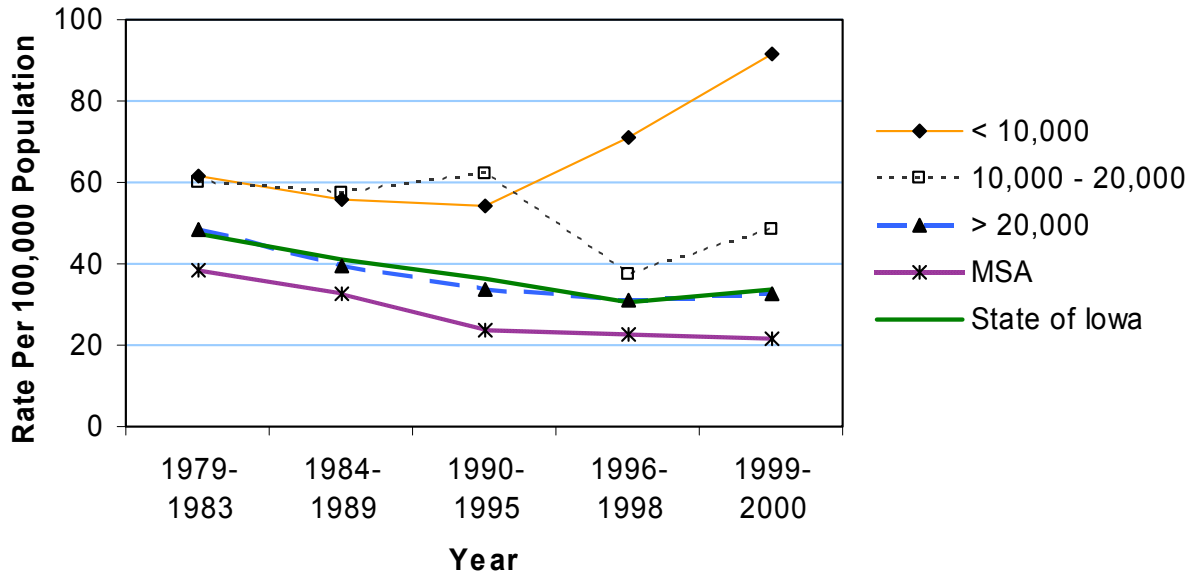
¹Rates per 100,000 population

²Adjusted to Year 2000 population

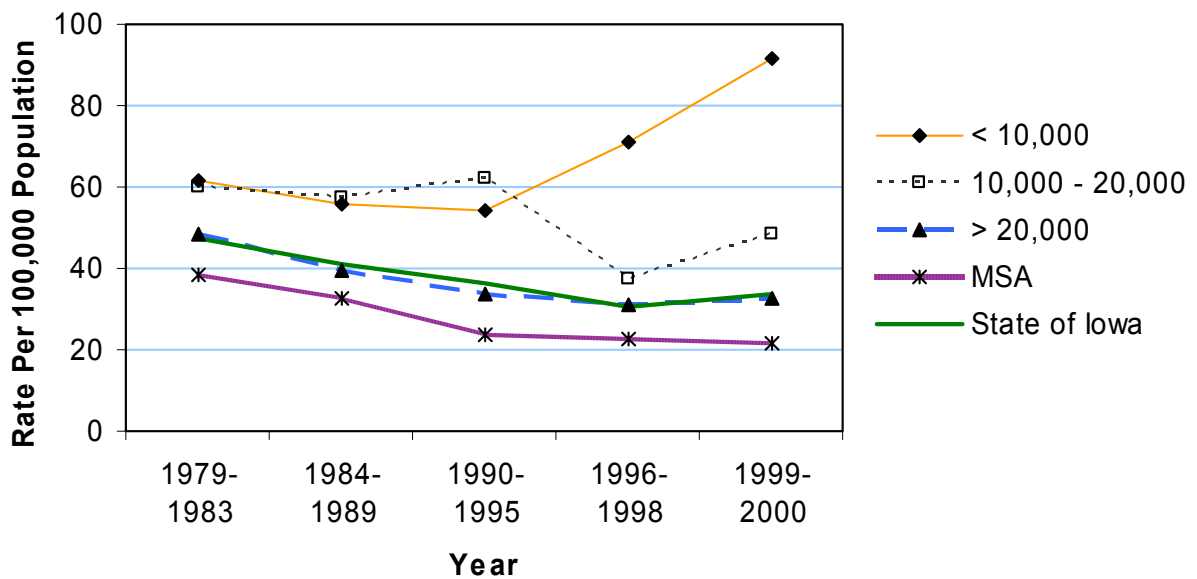
Source: Iowa Department of Public Health via Iowa Cancer Registry

Age 15-19: All Transportation Mortality by County Group 1979-2000

Crude Rates



Age-Adjusted Rates



Age 0-14: Motor Vehicle Traffic Mortality 1990-2000

	County	#	Crude ¹	Adjusted ^{1,2}	County	#	Crude ¹	Adjusted ^{1,2}
Counties with Average Population < 10,000	Adair	*	*	*	Lucas	*	*	*
	Adams	*	*	*	Monroe	*	*	*
	Audubon	*	*	*	Osceola	*	*	*
	Clarke	*	*	*	Pocahontas	*	*	*
	Davis	*	*	*	Ringgold	*	*	*
	Decatur	*	*	*	Taylor	*	*	*
	Fremont	*	*	*	Van Buren	*	*	*
	Howard	*	*	*	Wayne	*	*	*
	Ida	*	*	*	Worth	*	*	*
					Total	22	6.9	6.8
Counties with Average Population 10,000 to 20,000	Allamakee	*	*	*	Humboldt	*	*	*
	Appanoose	*	*	*	Iowa	*	*	*
	Butler	*	*	*	Jefferson	*	*	*
	Calhoun	*	*	*	Keokuk	*	*	*
	Cass	*	*	*	Kossuth	*	*	*
	Cedar	*	*	*	Louisa	*	*	*
	Cherokee	*	*	*	Lyon	*	*	*
	Chickasaw	*	*	*	Madison	*	*	*
	Clay	*	*	*	Mills	*	*	*
	Clayton	5	11.2	11.1	Mitchell	*	*	*
	Crawford	6	15.1	15.4	Monona	*	*	*
	Delaware	*	*	*	Montgomery	*	*	*
	Dickinson	*	*	*	O'Brien	*	*	*
	Emmet	*	*	*	Page	*	*	*
	Floyd	*	*	*	Palo Alto	*	*	*
	Franklin	*	*	*	Poweshiek	*	*	*
	Greene	*	*	*	Sac	5	18.3	16.8
	Grundy	*	*	*	Shelby	*	*	*
	Guthrie	*	*	*	Tama	*	*	*
	Hamilton	*	*	*	Union	*	*	*
Hancock	*	*	*	Winnebago	6	23.0	22.0	
Hardin	*	*	*	Wright	*	*	*	
Harrison	*	*	*	Total	104	7.1	7.0	
Counties with Average Population > 20,000	Benton	*	*	*	Jones	*	*	*
	Boone	12	20.9	21.1	Lee	7	8.0	8.0
	Bremer	*	*	*	Mahaska	5	9.6	9.6
	Buchanan	*	*	*	Marion	*	*	*
	Buena Vista	*	*	*	Marshall	5	5.8	5.7
	Carroll	*	*	*	Muscatine	8	7.8	7.7
	Cerro Gordo	*	*	*	Plymouth	*	*	*
	Clinton	*	*	*	Sioux	6	7.5	7.3
	Des Moines	*	*	*	Story	*	*	*
	Fayette	*	*	*	Wapello	10	12.9	12.9
	Henry	5	11.2	11.2	Washington	*	*	*
	Jackson	*	*	*	Webster	7	7.6	7.6
	Jasper	*	*	*	Winneshiek	*	*	*
				Total	103	5.5	5.5	
MSA Counties	Black Hawk	12	4.3	4.3	Polk	25	3.0	3.1
	Dallas	5	5.6	5.6	Pottawattamie	6	2.9	2.9
	Dubuque	6	2.9	2.9	Scott	11	2.8	2.8
	Johnson	7	3.6	3.6	Warren	*	*	*
	Linn	20	4.8	4.8	Woodbury	15	5.8	5.8
State Totals	338	5.1	5.1	Total	109	3.7	3.7	

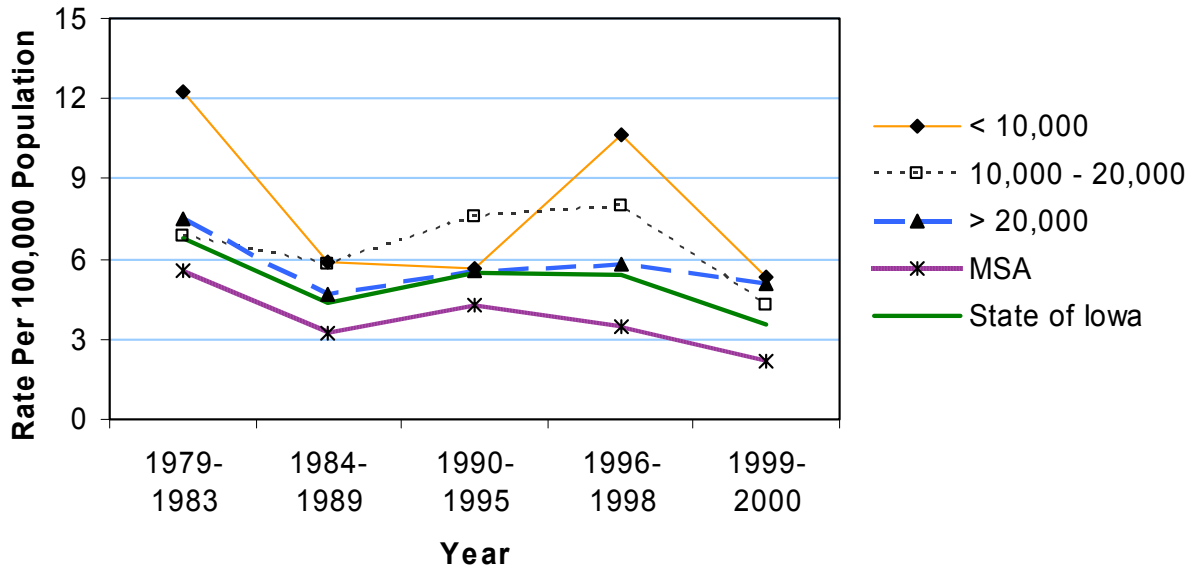
¹Rates per 100,000 population

²Adjusted to Year 2000 population

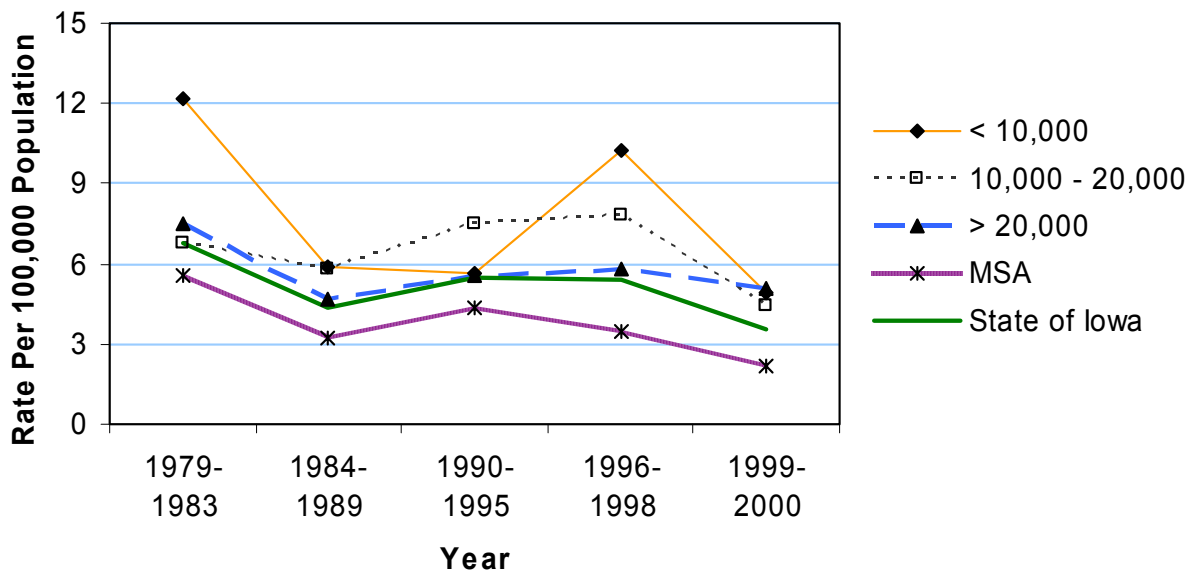
Source: Iowa Department of Public Health via Iowa Cancer Registry

Age 0-14: Motor Vehicle Traffic Mortality by County Group 1979-2000

Crude Rates



Age-Adjusted Rates



Age 15-19: Motor Vehicle Traffic Mortality 1990-2000

	County	#	Crude ¹	Adjusted ^{1,2}	County	#	Crude ¹	Adjusted ^{1,2}
Counties with Average Population < 10,000	Adair	7	115.2	115.2	Lucas	*	*	*
	Adams	*	*	*	Monroe	*	*	*
	Audubon	*	*	*	Osceola	*	*	*
	Clarke	*	*	*	Pocahontas	*	*	*
	Davis	6	89.8	89.8	Ringgold	*	*	*
	Decatur	6	64.8	64.8	Taylor	*	*	*
	Fremont	7	114.9	114.9	Van Buren	*	*	*
	Howard	*	*	*	Wayne	12	251.9	251.9
	Ida	7	111.8	111.8	Worth	*	*	*
					Total	70	65.5	65.5
Counties with Average Population 10,000 to 20,000	Allamakee	9	82.6	82.6	Humboldt	*	*	*
	Appanoose	6	57.4	57.4	Iowa	*	*	*
	Butler	9	75.4	75.4	Jefferson	7	56.6	56.6
	Calhoun	*	*	*	Keokuk	8	90.0	90.0
	Cass	9	81.3	81.3	Kossuth	12	83.7	83.7
	Cedar	5	37.1	37.1	Louisa	6	64.0	64.0
	Cherokee	5	46.4	46.4	Lyon	5	51.5	51.5
	Chickasaw	5	45.9	45.9	Madison	8	75.4	75.4
	Clay	*	*	*	Mills	8	70.3	70.3
	Clayton	19	127.8	127.8	Mitchell	6	71.3	71.3
	Crawford	8	52.7	52.7	Monona	6	85.3	85.3
	Delaware	14	90.5	90.5	Montgomery	6	67.4	67.4
	Dickinson	*	*	*	O'Brien	8	64.3	64.3
	Emmet	*	*	*	Page	*	*	*
	Floyd	*	*	*	Palo Alto	6	63.5	63.5
	Franklin	*	*	*	Poweshiek	7	38.4	38.4
	Greene	*	*	*	Sac	*	*	*
	Grundy	*	*	*	Shelby	*	*	*
	Guthrie	*	*	*	Tama	10	72.8	72.8
	Hamilton	*	*	*	Union	6	57.1	57.1
Hancock	7	71.0	71.0	Winnebago	*	*	*	
Hardin	*	*	*	Wright	5	49.3	49.3	
Harrison	6	51.5	51.5	Total	256	51.0	51.0	
Counties with Average Population > 20,000	Benton	8	44.8	44.8	Jones	11	73.7	73.7
	Boone	*	*	*	Lee	11	38.5	38.5
	Bremer	5	22.3	22.3	Mahaska	*	*	*
	Buchanan	7	38.8	38.8	Marion	6	22.1	22.1
	Buena Vista	5	26.8	26.8	Marshall	8	26.7	26.7
	Carroll	12	69.0	69.0	Muscatine	9	27.3	27.3
	Cerro Gordo	14	37.6	37.6	Plymouth	7	32.7	32.7
	Clinton	13	32.4	32.4	Sioux	19	55.9	55.9
	Des Moines	10	30.2	30.2	Story	8	8.7	8.7
	Fayette	8	44.2	44.2	Wapello	10	35.3	35.3
	Henry	9	56.3	56.3	Washington	5	34.5	34.5
	Jackson	12	74.6	74.6	Webster	6	18.7	18.7
	Jasper	9	34.6	34.6	Winneshiek	5	21.3	21.3
					Total	224	32.2	32.2
MSA Counties	Black Hawk	19	16.4	16.4	Polk	59	23.0	23.0
	Dallas	7	27.4	27.4	Pottawattamie	17	24.9	24.9
	Dubuque	21	27.3	27.3	Scott	27	21.9	21.9
	Johnson	15	13.9	13.9	Warren	6	17.3	17.3
	Linn	33	22.9	22.9	Woodbury	20	23.8	23.8
State Totals	774	33.0	33.0	Total	224	21.6	21.6	

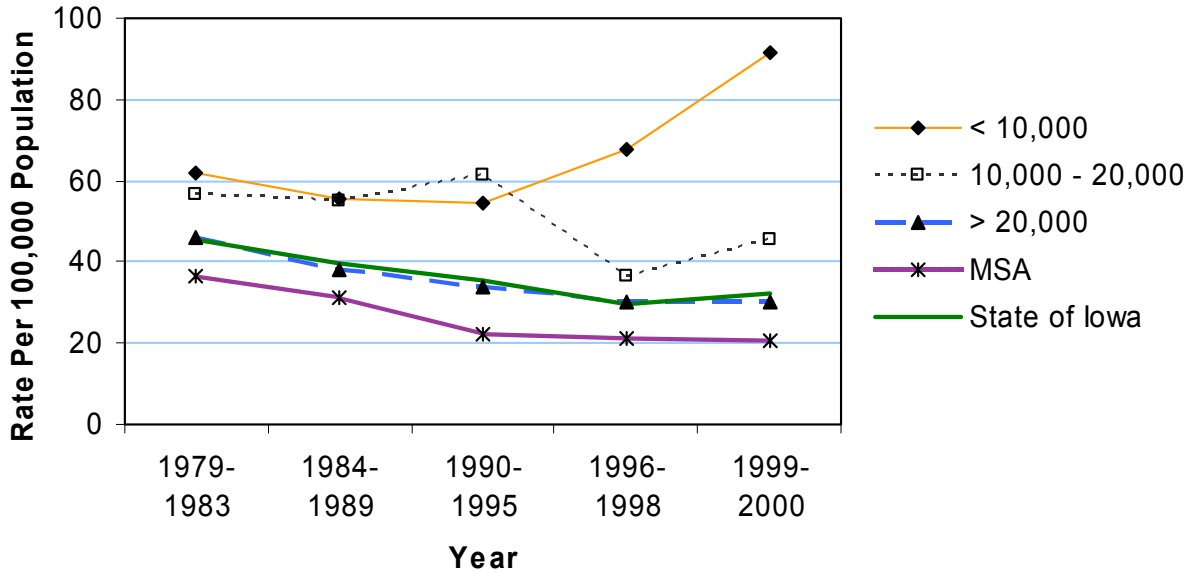
¹Rates per 100,000 population

²Adjusted to Year 2000 population

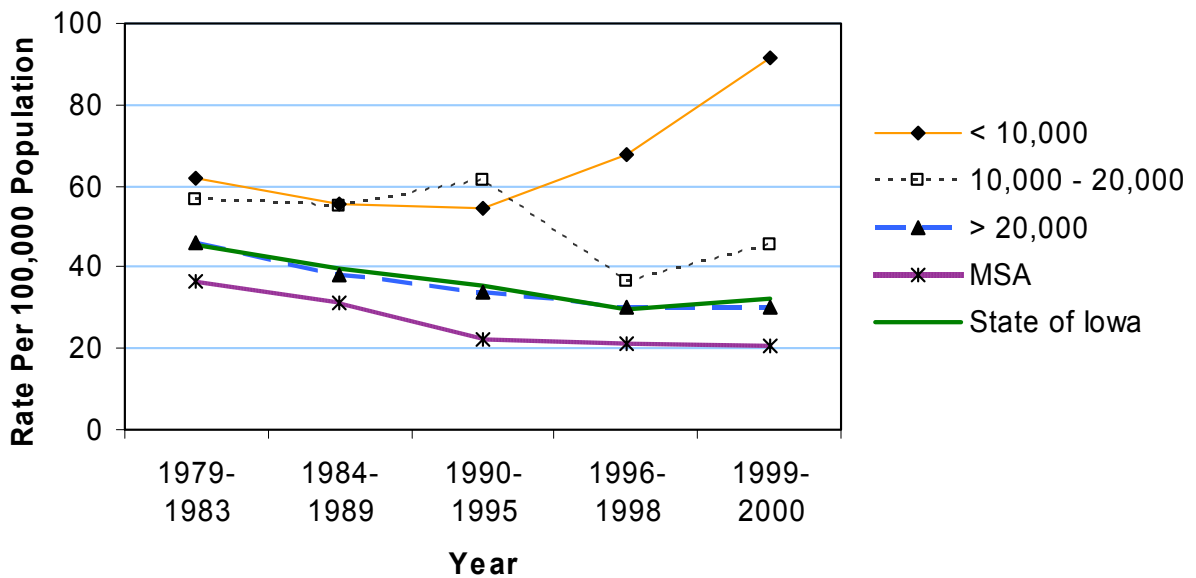
Source: Iowa Department of Public Health via Iowa Cancer Registry

Age 15-19: Motor Vehicle Traffic Mortality by County Group 1979-2000

Crude Rates

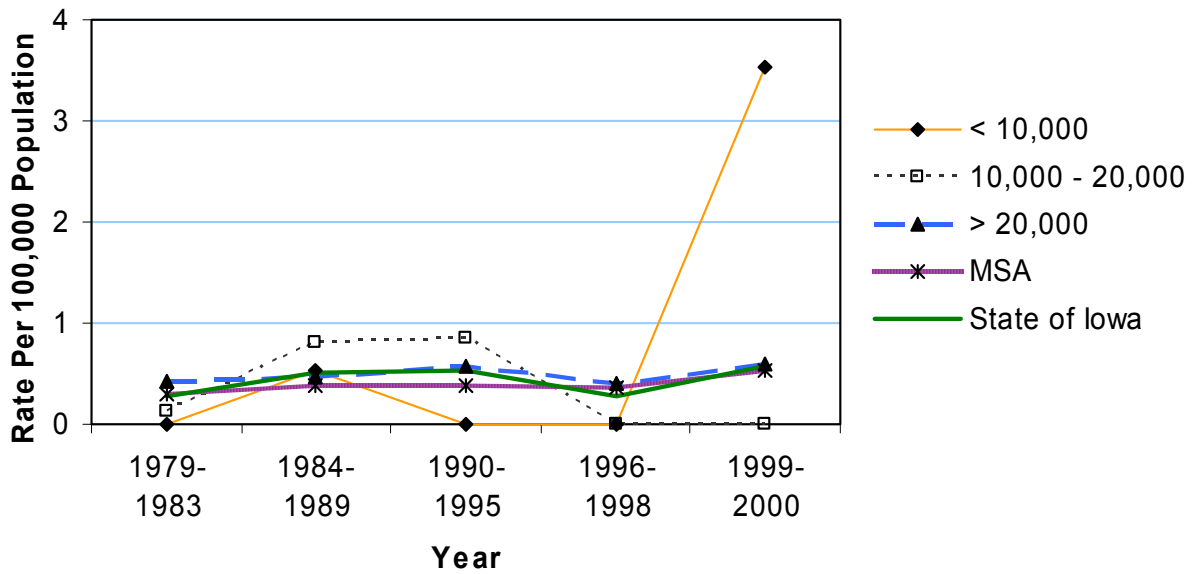


Age-Adjusted Rates

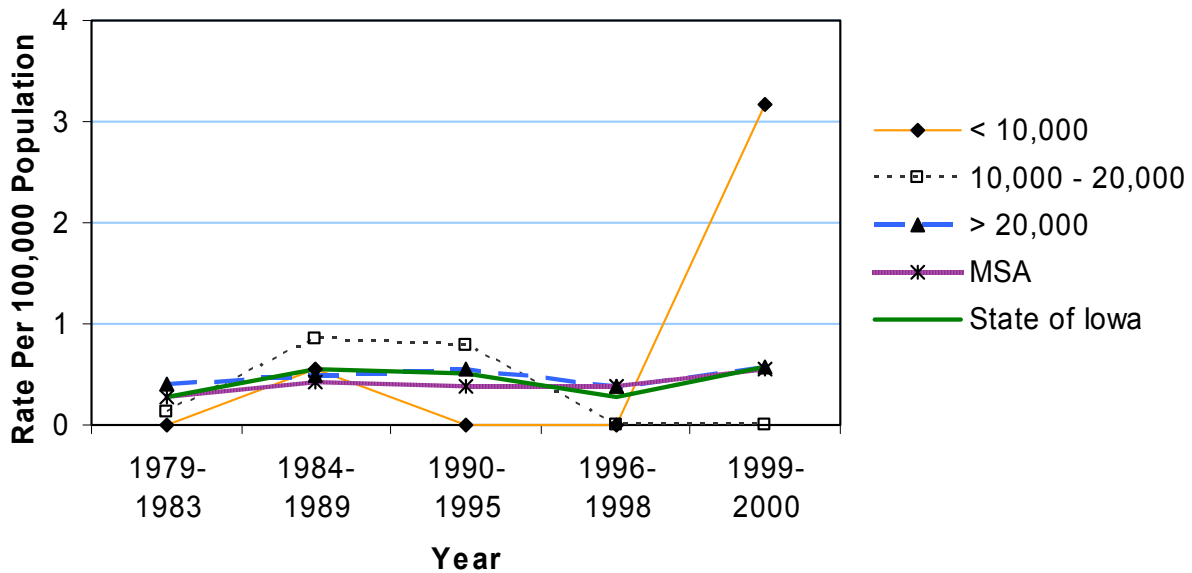


Age 0-14: Suicide by County Group 1979-2000

Crude Rates



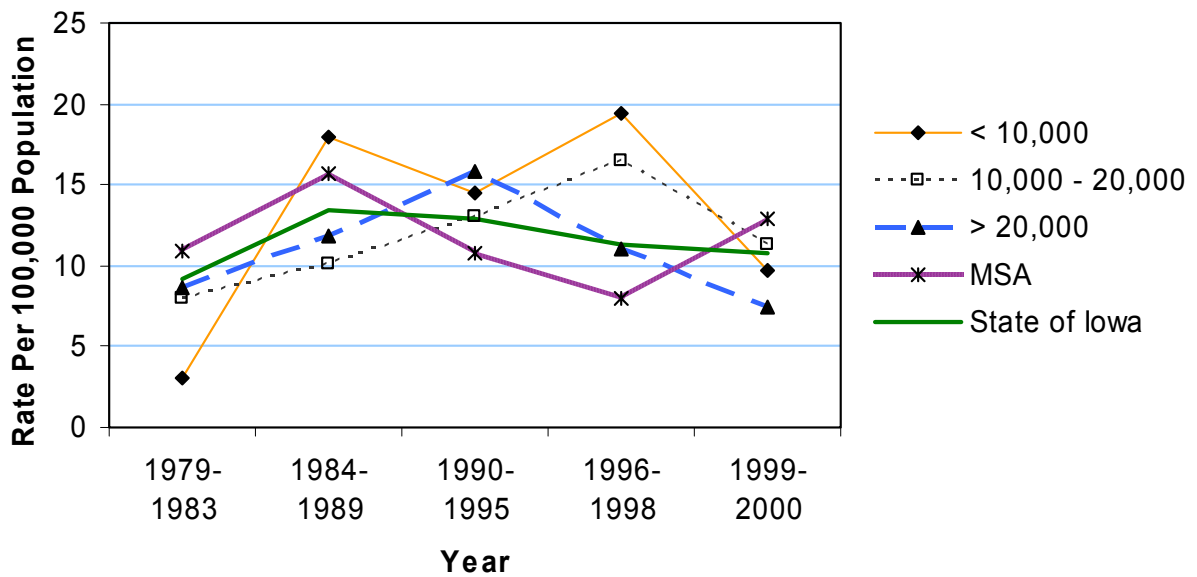
Age-Adjusted Rates



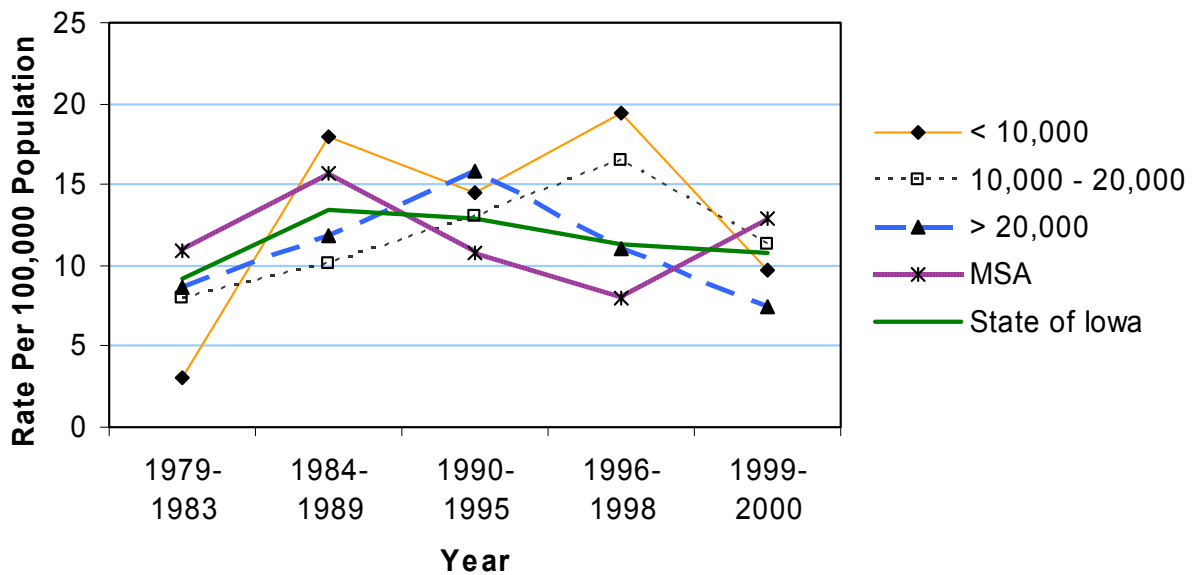
Source: Iowa Department of Public Health, via Iowa Cancer Registry

Age 15-19: Suicide by County Group 1979-2000

Crude Rates



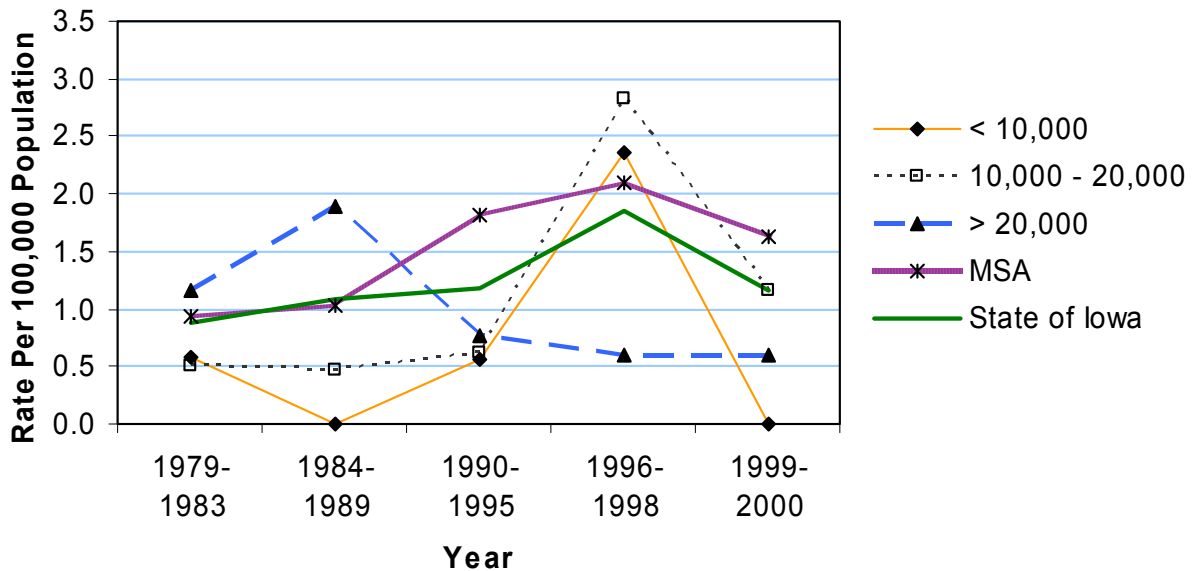
Age-Adjusted Rates



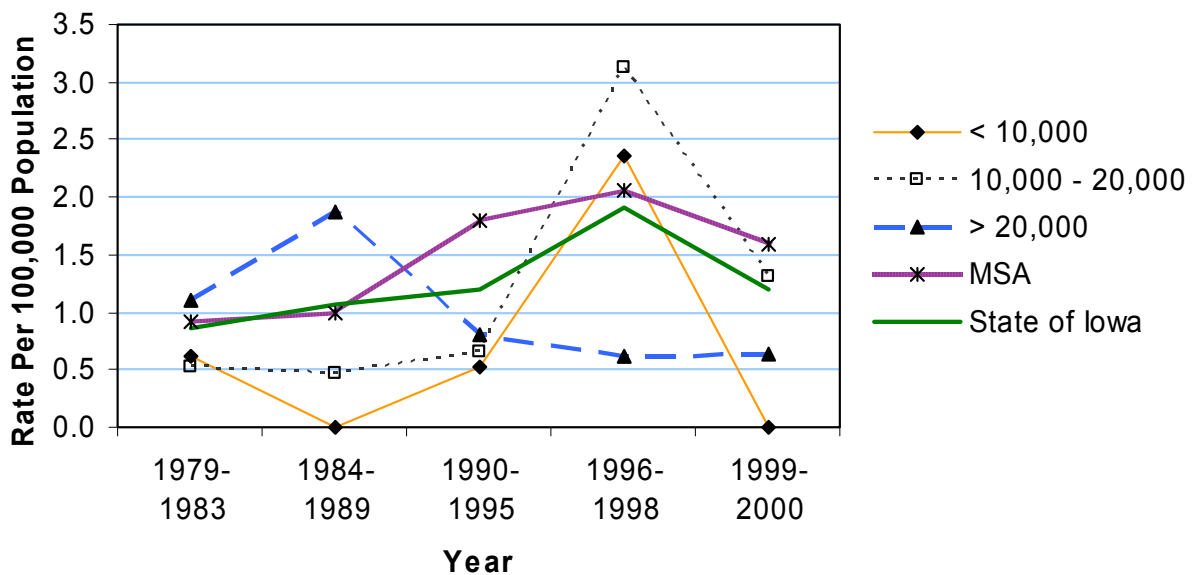
Source: Iowa Department of Public Health, via Iowa Cancer Registry

Age 0-14: Homicide by County Group 1979-2000

Crude Rates



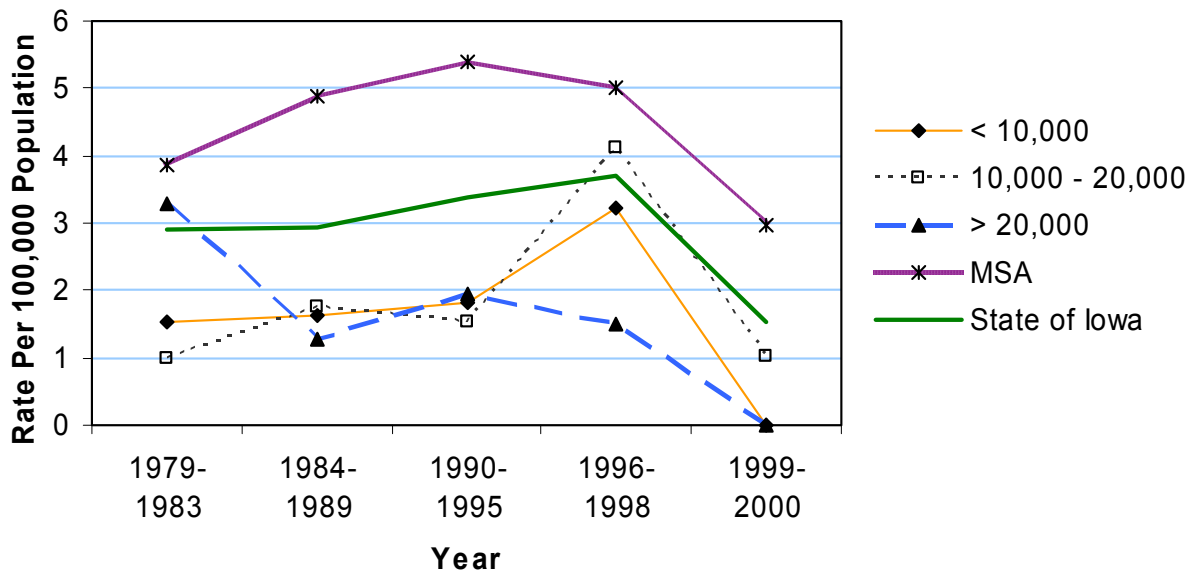
Age-Adjusted Rates



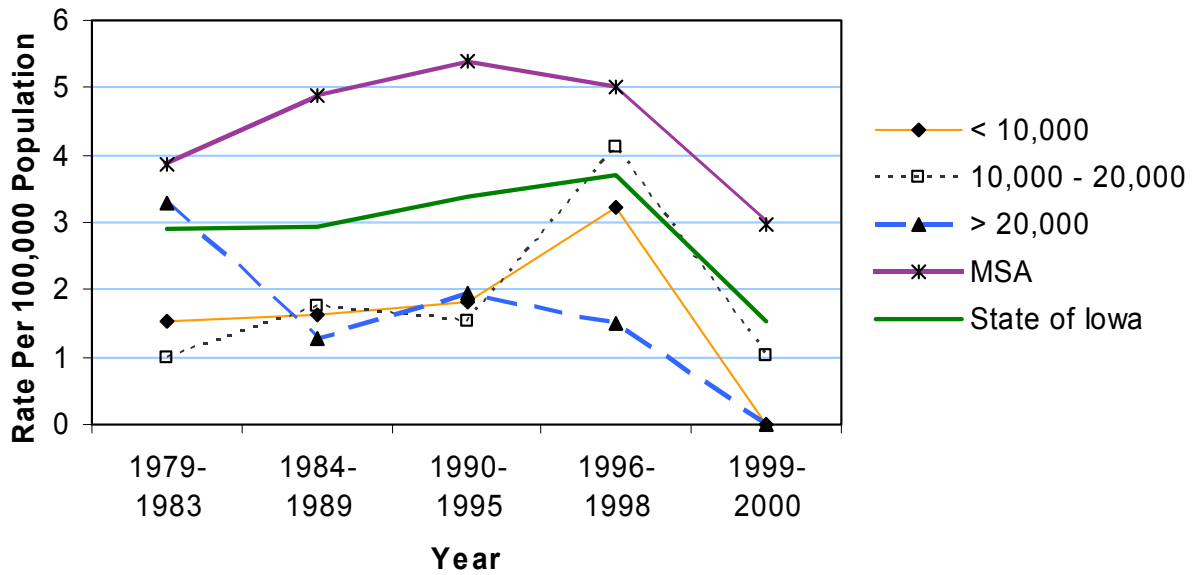
Source: Iowa Department of Public Health, via Iowa Cancer Registry

Age 15-19: Homicide by County Group 1979-2000

Crude Rates



Age-Adjusted Rates



Source: Iowa Department of Public Health, via Iowa Cancer Registry

