

Injury Mortality

Transportation-related mortality accounted for 5,070 deaths in Iowa from 1993 to 2002, 91% of which were motor vehicle fatalities. The rates for these fatalities are highest in the rural counties and lowest in the most urban counties. Crude rates for suicide, firearm mortality, and falls mortality tend to be highest in rural counties, but the age-adjusted rates are more similar for the county groups. Homicide rates are consistently higher in the urban counties. Poisoning mortality rates have shown variation across years for each county group. The state's mortality rate from burns has decreased since 1979. In general, drowning deaths have consistently decreased across all county levels since 1979. Deaths from all other unintentional injuries are difficult to compare for 1999-2002 and preceding years due to changes in the mortality classification systems (discussed below).

HIGHLIGHTS...

- ✓ Injuries are the leading cause of death in persons 1-34 years of age.
- ✓ Motor vehicle deaths account for 91% of all transportation deaths in Iowa.
- ✓ Crude mortality rates from motor vehicle accidents, suicide, firearms, and falls are highest in rural counties.

Beginning in 1999, the tenth revision of the International Classification of Diseases (ICD-10) replaced the ninth version (ICD-9) as the standard mortality classification system. ICD-10 is more detailed than ICD-9; ICD-10 has about 8,000 categories while ICD-9 has about 5,000 categories. Also, some of the coding rules and rules for selecting the underlying cause of death have changed. Because of the new classification system, observed changes in mortality rates between 1999-2002 and preceding years could be due, in part, to changes in the method of mortality classification. Therefore, one should compare rates from 1999-2002 and preceding years with caution. The ICD-9 and ICD-10 codes used for each type of Injury Mortality are listed in Appendix III.

The source of this mortality data is the cause of death data obtained from death certificates filed at the Iowa Department of Public Health. Analysis was done by the State Health Registry of Iowa and the Center for Public Health Statistics at the University of Iowa. Age-adjusted rates were calculated using the Year 2000 US population distribution.

All Transportation Mortality 1993-2002

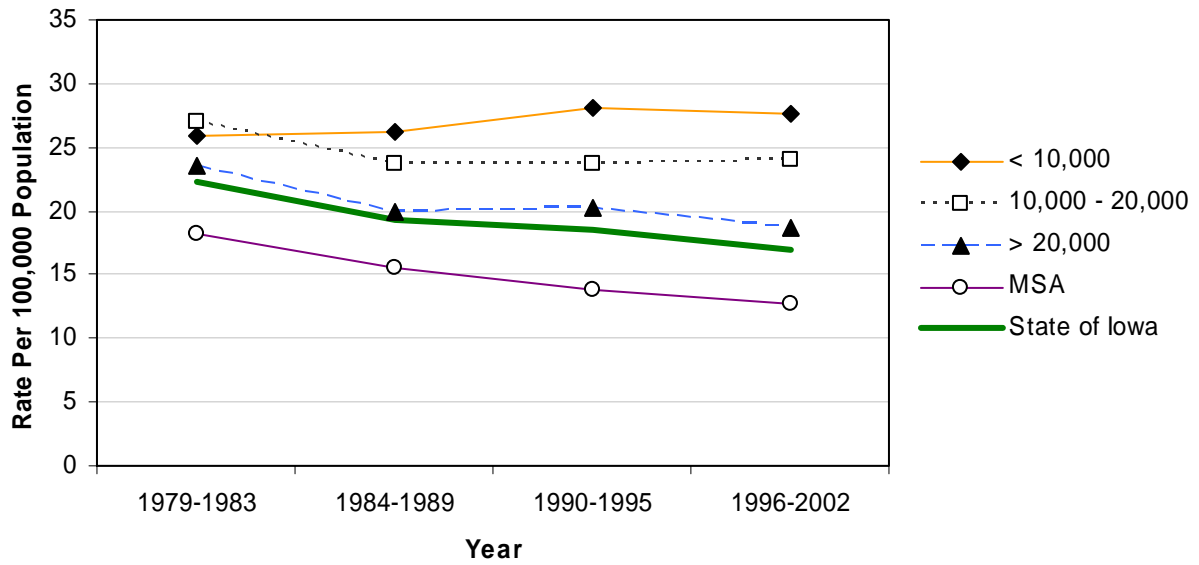
	County	#	Crude ¹ (Rank ³)	Adjusted ^{1,2} (Rank ³)	County	#	Crude ¹ (Rank ³)	Adjusted ^{1,2} (Rank ³)	
	Counties with 2004 Population < 10,000	Adair	26	31.4 (11)	29.8 (16)	Monona	30	30.0 (13)	33.8 (08)
Adams		13	28.8 (16)	31.8 (12)	Monroe	29	35.9 (05)	37.5 (05)	
Audubon		13	18.9 (71)	14.5 (90)	Osceola	20	28.2 (18)	30.2 (15)	
Clarke		21	23.8 (35)	25.9 (26)	Palo Alto	24	23.5 (37)	23.6 (36)	
Davis		34	40.0 (03)	40.4 (03)	Pocahontas	20	22.6 (40)	21.8 (47)	
Decatur		27	31.7 (10)	29.6 (17)	Ringgold	11	20.3 (62)	17.6 (76)	
Fremont		20	24.9 (31)	27.7 (21)	Taylor	19	27.2 (19)	30.5 (13)	
Howard		16	16.1 (86)	17.0 (78)	Van Buren	29	37.5 (04)	38.5 (04)	
Ida		24	30.0 (12)	32.7 (09)	Wayne	34	49.7 (01)	55.3 (01)	
Lucas		25	26.8 (20)	24.6 (32)	Worth	17	21.5 (47)	21.0 (54)	
					Total	452	28.3	28.9	
Counties with 2004 Population 10,000 – 20,000		Allamakee	31	21.4 (48)	22.7 (40)	Hardin	39	20.7 (56)	19.5 (65)
		Appanoose	39	28.5 (17)	29.4 (19)	Humboldt	23	22.1 (42)	22.7 (38)
	Butler	30	19.5 (67)	21.1 (52)	Iowa	40	26.0 (24)	28.3 (20)	
	Calhoun	16	14.2 (91)	15.9 (86)	Jefferson	36	22.0 (44)	21.6 (49)	
	Cass	43	29.0 (15)	30.4 (14)	Keokuk	51	44.5 (02)	44.0 (02)	
	Cedar	45	25.1 (28)	24.9 (31)	Kossuth	44	25.3 (27)	25.5 (28)	
	Cherokee	35	26.3 (22)	26.7 (22)	Louisa	36	29.8 (14)	29.5 (18)	
	Chickasaw	33	25.0 (29)	26.4 (23)	Lyon	24	20.4 (61)	19.8 (63)	
	Clay	26	14.9 (89)	15.2 (89)	Mitchell	28	25.7 (26)	22.2 (42)	
	Clayton	65	34.6 (07)	35.4 (07)	Montgomery	24	20.3 (63)	19.9 (62)	
	Crawford	55	32.6 (09)	32.1 (10)	O'Brien	29	18.9 (72)	18.9 (67)	
	Delaware	38	20.7 (55)	20.0 (59)	Page	35	20.6 (57)	18.6 (72)	
	Dickinson	31	19.4 (68)	18.9 (68)	Poweshiek	38	20.1 (66)	18.8 (69)	
	Emmet	28	25.0 (30)	25.1 (30)	Sac	41	34.9 (06)	31.8 (11)	
	Floyd	39	23.0 (38)	22.4 (41)	Shelby	27	20.5 (59)	21.9 (45)	
	Franklin	24	22.0 (43)	21.3 (51)	Tama	62	34.5 (08)	37.3 (06)	
	Greene	21	20.4 (60)	21.0 (53)	Union	26	21.1 (53)	21.5 (50)	
	Hamilton	40	24.5 (33)	24.1 (34)	Winnebago	31	26.4 (21)	25.4 (29)	
Hancock	22	18.2 (75)	16.6 (81)	Wright	37	25.7 (25)	26.1 (25)		
				Total	1,332	24.3	24.2		
Counties with 2004 Population > 20,000	Boone	56	21.7 (46)	22.1 (43)	Lee	85	22.2 (41)	22.0 (44)	
	Buchanan	46	21.8 (45)	21.9 (46)	Mahaska	45	20.3 (64)	19.6 (64)	
	Buena Vista	37	18.1 (76)	16.9 (79)	Marion	61	19.3 (70)	19.1 (66)	
	Carroll	49	22.8 (39)	23.1 (37)	Marshall	70	17.9 (78)	18.4 (74)	
	Cerro Gordo	82	17.6 (82)	17.5 (77)	Muscatine	69	16.6 (84)	16.9 (80)	
	Clinton	105	20.7 (54)	20.6 (56)	Plymouth	44	17.9 (79)	18.7 (70)	
	Des Moines	72	16.9 (83)	16.4 (82)	Sioux	56	17.8 (81)	16.0 (85)	
	Fayette	47	21.3 (51)	21.0 (55)	Wapello	77	21.4 (50)	21.7 (48)	
	Henry	43	21.4 (49)	20.4 (58)	Webster	72	18.1 (77)	17.7 (75)	
	Jackson	48	23.7 (36)	24.1 (35)	Winneshiek	38	17.9 (80)	15.6 (88)	
	Jasper	59	16.2 (85)	16.3 (83)	Total	1,261	19.3	19.0	
	MSA Counties	Benton	38	15.4 (88)	16.1 (84)	Linn	208	11.2 (97)	11.1 (97)
		Black Hawk	183	14.4 (90)	14.0 (91)	Madison	33	24.2 (34)	25.6 (27)
Bremer		47	20.2 (65)	18.5 (73)	Mills	29	20.6 (58)	20.5 (57)	
Dallas		73	19.3 (69)	19.9 (61)	Polk	459	12.6 (93)	12.7 (93)	
Dubuque		98	11.0 (98)	10.9 (98)	Pottawattamie	135	15.7 (87)	15.7 (87)	
Grundy		26	21.2 (52)	22.7 (39)	Scott	184	11.7 (95)	11.8 (95)	
Guthrie		21	18.6 (73)	19.9 (60)	Story	94	12.0 (94)	12.0 (94)	
Harrison		38	24.7 (32)	24.5 (33)	Warren	45	11.3 (96)	11.5 (96)	
Johnson		86	8.0 (99)	7.9 (99)	Washington	38	18.5 (74)	18.6 (71)	
Jones		53	26.1 (23)	26.2 (24)	Woodbury	137	13.3 (92)	13.1 (92)	
					Total	2,025	13.2	13.0	
State Total		5,070	17.5	17.1					

¹Rates per 100,000 population
²Adjusted to year 2000 population
³Rank among 99 counties

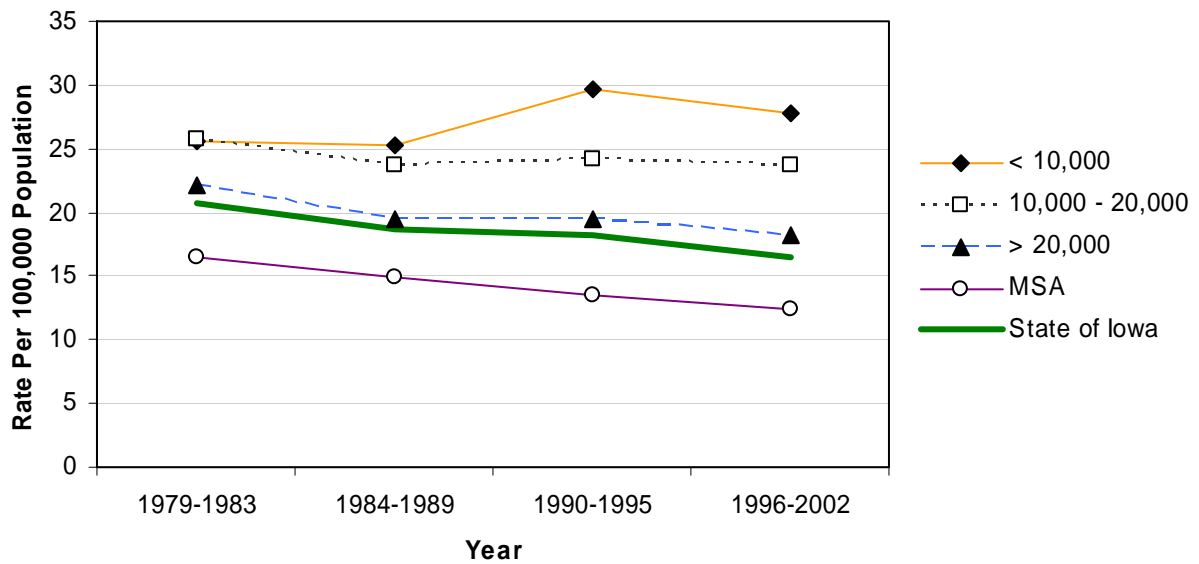
Source: Iowa Department of Public Health via Iowa Cancer Registry

All Transportation Mortality by County Group 1979-2002

Crude Rates



Age-Adjusted Rates



Motor Vehicle Traffic Mortality 1993-2002

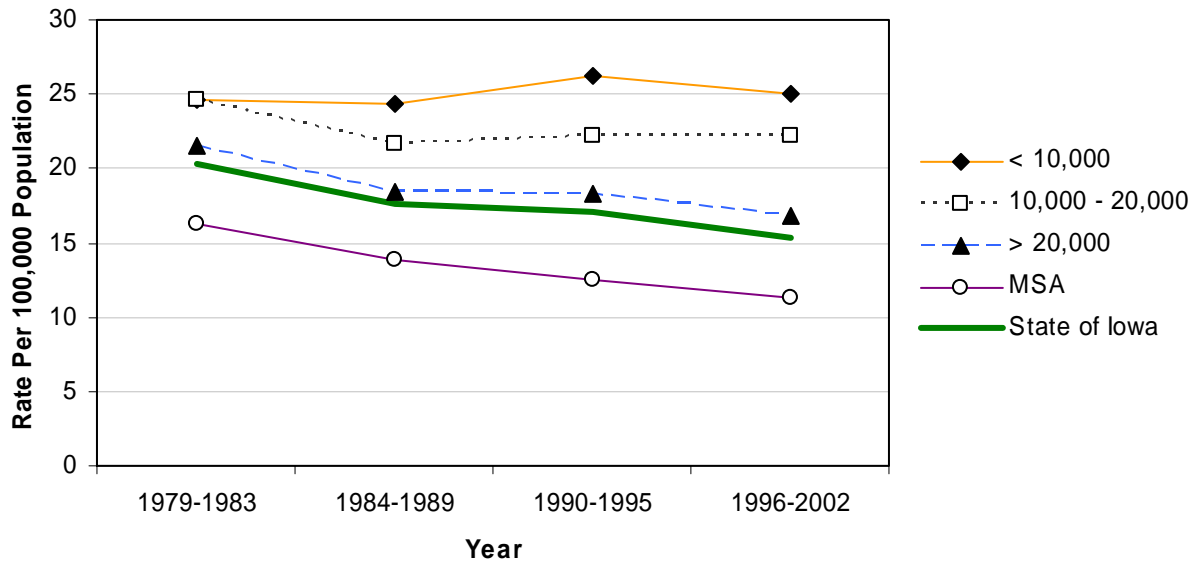
	County	#	Crude ¹ (Rank ³)	Adjusted ^{1,2} (Rank ³)	County	#	Crude ¹ (Rank ³)	Adjusted ^{1,2} (Rank ³)	
	Counties with 2004 Population < 10,000	Adair	25	30.2 (09)	28.6 (14)	Monona	28	28.0 (12)	32.0 (07)
Adams		11	24.4 (22)	28.1 (15)	Monroe	25	31.0 (08)	31.8 (08)	
Audubon		12	17.5 (72)	13.9 (88)	Osceola	18	25.4 (18)	26.4 (20)	
Clarke		21	23.8 (27)	25.9 (22)	Palo Alto	21	20.5 (44)	20.9 (42)	
Davis		33	38.8 (03)	39.1 (03)	Pocahontas	19	21.5 (37)	20.5 (44)	
Decatur		25	29.4 (10)	27.2 (18)	Ringgold	11	20.3 (45)	17.6 (66)	
Fremont		19	23.6 (28)	26.5 (19)	Taylor	18	25.8 (17)	29.2 (11)	
Howard		14	14.1 (88)	14.4 (84)	Van Buren	27	34.9 (04)	35.4 (04)	
Ida		21	26.3 (16)	29.8 (09)	Wayne	30	43.9 (01)	49.9 (01)	
Lucas		20	21.4 (38)	21.0 (41)	Worth	15	18.9 (59)	18.1 (60)	
					Total	413	25.8	26.5	
Counties with 2004 Population 10,000 – 20,000		Allamakee	29	20.0 (50)	21.4 (39)	Hardin	36	19.1 (56)	17.5 (67)
		Appanoose	38	27.7 (14)	29.0 (13)	Humboldt	21	20.2 (47)	19.7 (49)
	Butler	26	16.9 (75)	18.9 (55)	Iowa	36	23.4 (30)	25.9 (21)	
	Calhoun	14	12.4 (91)	14.0 (85)	Jefferson	35	21.4 (39)	21.1 (40)	
	Cass	41	27.7 (15)	29.1 (12)	Keokuk	48	41.9 (02)	41.6 (02)	
	Cedar	43	23.9 (26)	23.8 (28)	Kossuth	42	24.1 (24)	24.0 (27)	
	Cherokee	32	24.0 (25)	24.5 (25)	Louisa	34	28.2 (11)	27.9 (16)	
	Chickasaw	32	24.3 (23)	25.8 (23)	Lyon	21	17.8 (69)	17.5 (69)	
	Clay	25	14.3 (85)	14.5 (83)	Mitchell	27	24.7 (19)	21.5 (38)	
	Clayton	61	32.5 (05)	33.2 (06)	Montgomery	23	19.5 (52)	18.8 (57)	
	Crawford	47	27.9 (13)	27.7 (17)	O'Brien	27	17.6 (71)	17.6 (65)	
	Delaware	37	20.2 (48)	19.4 (52)	Page	32	18.9 (60)	17.0 (72)	
	Dickinson	29	18.1 (63)	17.3 (70)	Poweshiek	36	19.0 (57)	18.0 (61)	
	Emmet	25	22.3 (34)	23.0 (32)	Sac	38	32.4 (06)	29.7 (10)	
	Floyd	38	22.5 (33)	21.7 (37)	Shelby	25	19.0 (58)	20.5 (45)	
	Franklin	23	21.1 (42)	20.3 (47)	Tama	56	31.2 (07)	34.0 (05)	
	Greene	19	18.4 (62)	19.7 (50)	Union	25	20.3 (46)	20.7 (43)	
	Hamilton	38	23.3 (32)	22.8 (33)	Winnebago	29	24.7 (20)	23.4 (29)	
Hancock	19	15.7 (80)	14.0 (86)	Wright	34	23.6 (29)	24.1 (26)		
				Total	1,241	22.6	22.5		
Counties with 2004 Population > 20,000	Boone	52	20.1 (49)	20.5 (46)	Lee	69	18.0 (68)	17.9 (63)	
	Buchanan	38	18.0 (66)	17.9 (62)	Mahaska	43	19.4 (53)	18.7 (58)	
	Buena Vista	36	17.6 (70)	16.5 (73)	Marion	57	18.0 (64)	17.7 (64)	
	Carroll	47	21.8 (36)	22.5 (35)	Marshall	62	15.9 (78)	16.2 (75)	
	Cerro Gordo	74	15.9 (79)	15.8 (78)	Muscatine	65	15.7 (81)	15.9 (76)	
	Clinton	97	19.2 (54)	19.0 (54)	Plymouth	40	16.3 (77)	17.1 (71)	
	Des Moines	61	14.3 (84)	13.9 (87)	Sioux	54	17.1 (73)	15.5 (80)	
	Fayette	44	20.0 (51)	19.6 (51)	Wapello	67	18.6 (61)	18.9 (56)	
	Henry	42	20.9 (43)	19.9 (48)	Webster	65	16.3 (76)	15.9 (77)	
	Jackson	43	21.3 (40)	21.8 (36)	Winneshiek	32	15.1 (82)	13.1 (91)	
	Jasper	52	14.3 (86)	14.6 (82)	Total	1,140	17.5	17.1	
	MSA Counties	Benton	35	14.2 (87)	14.7 (81)	Linn	188	10.1 (96)	10.0 (96)
Black Hawk		172	13.5 (90)	13.2 (90)	Madison	30	22.0 (35)	23.4 (30)	
Bremer		42	18.0 (65)	16.3 (74)	Mills	27	19.2 (55)	19.1 (53)	
Dallas		64	17.0 (74)	17.5 (68)	Polk	410	11.3 (93)	11.4 (93)	
Dubuque		79	8.9 (98)	8.8 (98)	Pottawattamie	118	13.7 (89)	13.7 (89)	
Grundy		26	21.2 (41)	22.7 (34)	Scott	168	10.7 (95)	10.7 (94)	
Guthrie		17	15.1 (83)	15.8 (79)	Story	85	10.9 (94)	10.6 (95)	
Harrison		36	23.4 (31)	23.2 (31)	Warren	39	9.8 (97)	9.9 (97)	
Johnson		80	7.4 (99)	7.3 (99)	Washington	37	18.0 (67)	18.3 (59)	
Jones		50	24.6 (21)	24.6 (24)	Woodbury	125	12.1 (92)	11.9 (92)	
					Total	1,828	11.9	11.7	
State Total		4,622	16.0	15.5					

¹Rates per 100,000 population
²Adjusted to year 2000 population
³Rank among 99 counties

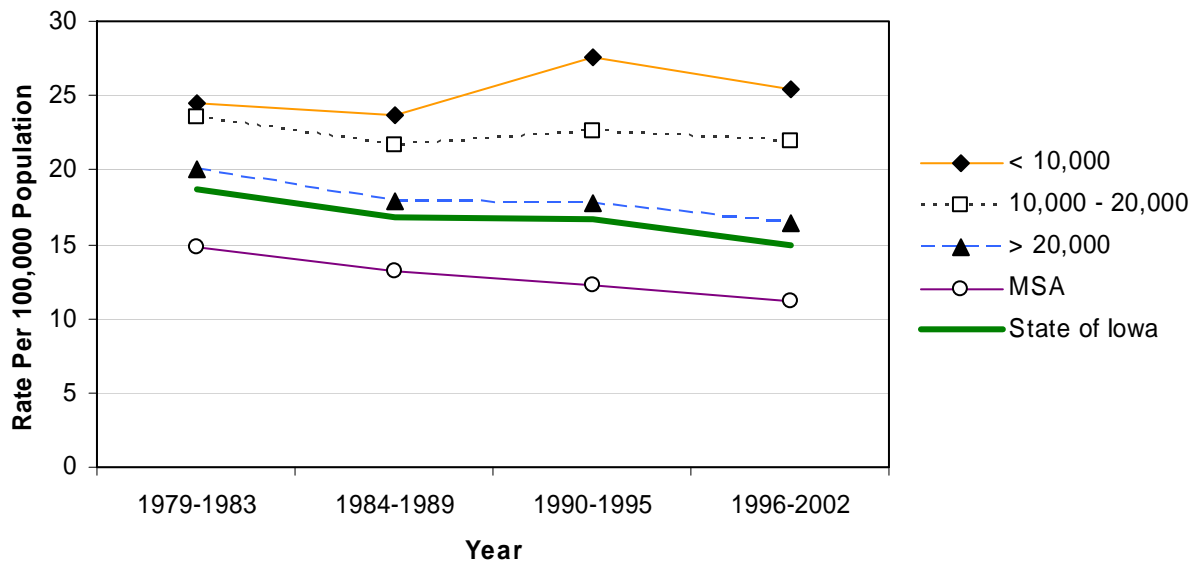
Source: Iowa Department of Public Health via Iowa Cancer Registry

Motor Vehicle Traffic Mortality by County Group 1979-2002

Crude Rates



Age-Adjusted Rates



Suicides 1993-2002

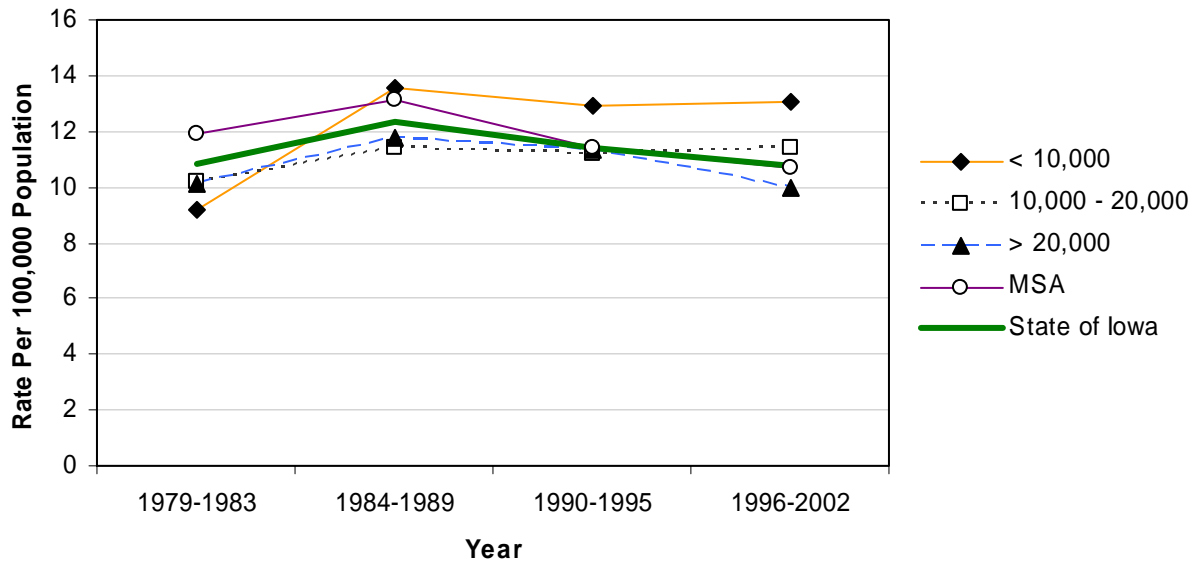
	County	#	Crude ¹ (Rank ³)	Adjusted ^{1,2} (Rank ³)	County	#	Crude ¹ (Rank ³)	Adjusted ^{1,2} (Rank ³)	
	Counties with 2004 Population < 10,000	Adair	7	8.5 (79)	7.2 (92)	Monona	15	15.0 (12)	14.6 (13)
Adams		5	11.1 (49)	11.7 (36)	Monroe	17	21.1 (02)	22.4 (01)	
Audubon		5	7.3 (92)	5.5 (95)	Osceola	11	15.5 (10)	15.8 (10)	
Clarke		13	14.8 (15)	14.4 (17)	Palo Alto	8	7.8 (86)	8.1 (84)	
Davis		11	12.9 (26)	11.3 (46)	Pocahontas	11	12.4 (31)	11.4 (41)	
Decatur		11	12.9 (25)	12.7 (25)	Ringgold	5	9.2 (73)	8.5 (78)	
Fremont		8	9.9 (62)	10.3 (63)	Taylor	8	11.4 (40)	8.3 (82)	
Howard		10	10.1 (60)	11.4 (44)	Van Buren	13	16.8 (06)	15.9 (09)	
Ida		5	6.3 (95)	6.0 (94)	Wayne	6	8.8 (76)	8.3 (83)	
Lucas		15	16.1 (08)	16.2 (08)	Worth	13	16.4 (07)	18.2 (04)	
					Total	197	12.3	12.0	
Counties with 2004 Population 10,000 – 20,000		Allamakee	16	11.1 (51)	10.7 (53)	Hardin	19	10.1 (59)	9.7 (68)
		Appanoose	17	12.4 (32)	11.8 (34)	Humboldt	22	21.1 (01)	21.6 (02)
	Butler	13	8.4 (80)	9.1 (74)	Iowa	14	9.1 (74)	9.6 (70)	
	Calhoun	11	9.8 (68)	10.4 (60)	Jefferson	31	18.9 (03)	18.7 (03)	
	Cass	14	9.4 (70)	10.4 (59)	Keokuk	17	14.8 (13)	12.9 (23)	
	Cedar	20	11.1 (48)	11.3 (47)	Kossuth	8	4.6 (98)	4.5 (98)	
	Cherokee	15	11.3 (46)	10.8 (51)	Louisa	13	10.8 (54)	10.5 (56)	
	Chickasaw	15	11.4 (41)	12.6 (27)	Lyon	8	6.8 (94)	7.0 (93)	
	Clay	21	12.0 (36)	11.0 (49)	Mitchell	12	11.0 (52)	11.0 (50)	
	Clayton	27	14.4 (18)	14.6 (15)	Montgomery	18	15.2 (11)	15.5 (11)	
	Crawford	13	7.7 (87)	8.3 (81)	O'Brien	15	9.8 (66)	10.4 (58)	
	Delaware	15	8.2 (82)	8.7 (76)	Page	16	9.4 (71)	9.4 (73)	
	Dickinson	21	13.1 (23)	13.1 (22)	Poweshiek	24	12.7 (28)	12.3 (28)	
	Emmet	10	8.9 (75)	7.9 (86)	Sac	13	11.1 (50)	11.1 (48)	
	Floyd	24	14.2 (20)	12.3 (29)	Shelby	13	9.9 (64)	10.5 (57)	
	Franklin	9	8.3 (81)	9.5 (72)	Tama	32	17.8 (05)	17.6 (06)	
	Greene	13	12.6 (29)	12.2 (31)	Union	23	18.6 (04)	18.2 (05)	
	Hamilton	17	10.4 (57)	10.2 (64)	Winnebago	11	9.4 (72)	9.5 (71)	
Hancock	12	9.9 (61)	10.3 (62)	Wright	11	7.6 (90)	7.5 (89)		
				Total	623	11.4	11.3		
Counties with 2004 Population > 20,000	Boone	32	12.4 (33)	12.2 (30)	Lee	56	14.6 (17)	14.6 (14)	
	Buchanan	27	12.8 (27)	13.7 (19)	Mahaska	17	7.7 (88)	8.0 (85)	
	Buena Vista	16	7.8 (85)	8.4 (79)	Marion	27	8.5 (77)	8.9 (75)	
	Carroll	21	9.8 (67)	9.7 (69)	Marshall	48	12.3 (34)	12.6 (26)	
	Cerro Gordo	53	11.4 (42)	11.4 (43)	Muscatine	41	9.9 (63)	9.9 (66)	
	Clinton	62	12.2 (35)	11.9 (33)	Plymouth	20	8.1 (83)	8.6 (77)	
	Des Moines	63	14.8 (14)	14.5 (16)	Sioux	16	5.1 (97)	4.7 (97)	
	Fayette	16	7.3 (93)	7.4 (90)	Wapello	48	13.3 (22)	13.1 (21)	
	Henry	11	5.5 (96)	5.3 (96)	Webster	45	11.3 (45)	11.4 (42)	
	Jackson	32	15.8 (09)	16.3 (07)	Winneshiek	9	4.2 (99)	3.8 (99)	
	Jasper	27	7.4 (91)	7.2 (91)	Total	687	10.5	10.5	
	MSA Counties	Benton	21	8.5 (78)	8.3 (80)	Linn	214	11.5 (39)	11.3 (45)
Black Hawk		125	9.8 (65)	10.0 (65)	Madison	20	14.7 (16)	14.8 (12)	
Bremer		29	12.5 (30)	11.8 (35)	Mills	15	10.6 (56)	11.6 (37)	
Dallas		36	9.5 (69)	9.8 (67)	Polk	421	11.6 (38)	11.6 (38)	
Dubuque		95	10.7 (55)	10.7 (52)	Pottawattamie	119	13.8 (21)	13.9 (18)	
Grundy		16	13.0 (24)	12.7 (24)	Scott	178	11.3 (44)	11.5 (40)	
Guthrie		16	14.2 (19)	13.1 (20)	Story	60	7.7 (89)	7.7 (88)	
Harrison		18	11.7 (37)	12.0 (32)	Warren	45	11.3 (43)	11.5 (39)	
Johnson		87	8.1 (84)	7.8 (87)	Washington	23	11.2 (47)	10.5 (55)	
Jones		22	10.8 (53)	10.6 (54)	Woodbury	107	10.4 (58)	10.3 (61)	
					Total	1,667	10.9	10.8	
State Total		3,174	11.0	10.8					

¹Rates per 100,000 population
²Adjusted to year 2000 population
³Rank among 99 counties

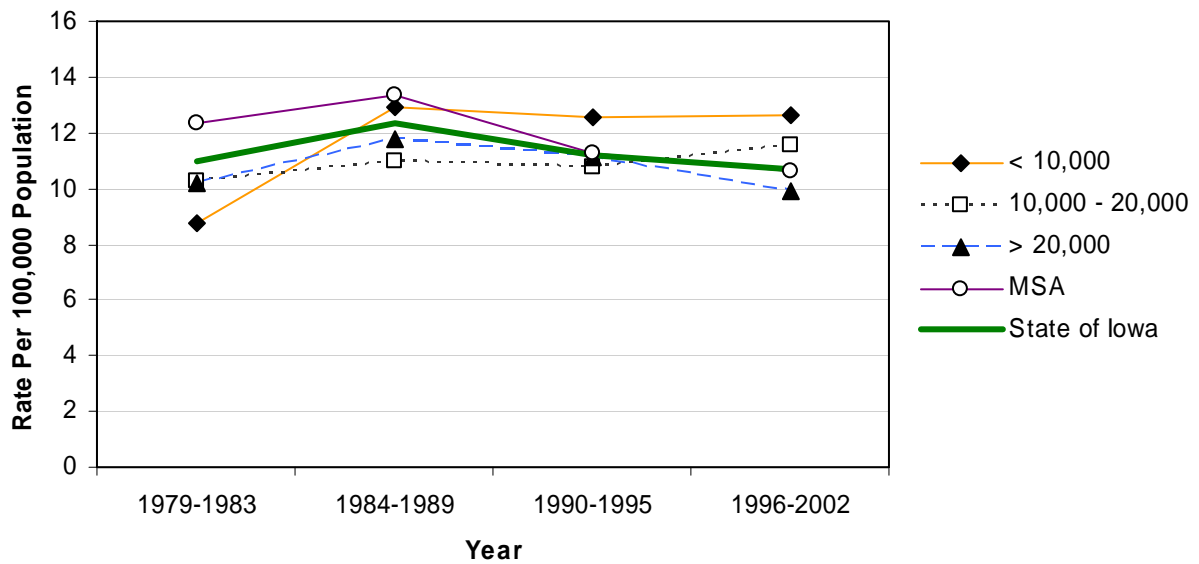
Source: Iowa Department of Public Health via Iowa Cancer Registry

Suicides by County Group 1979-2002

Crude Rates



Age-Adjusted Rates



Firearms Mortality 1993-2002

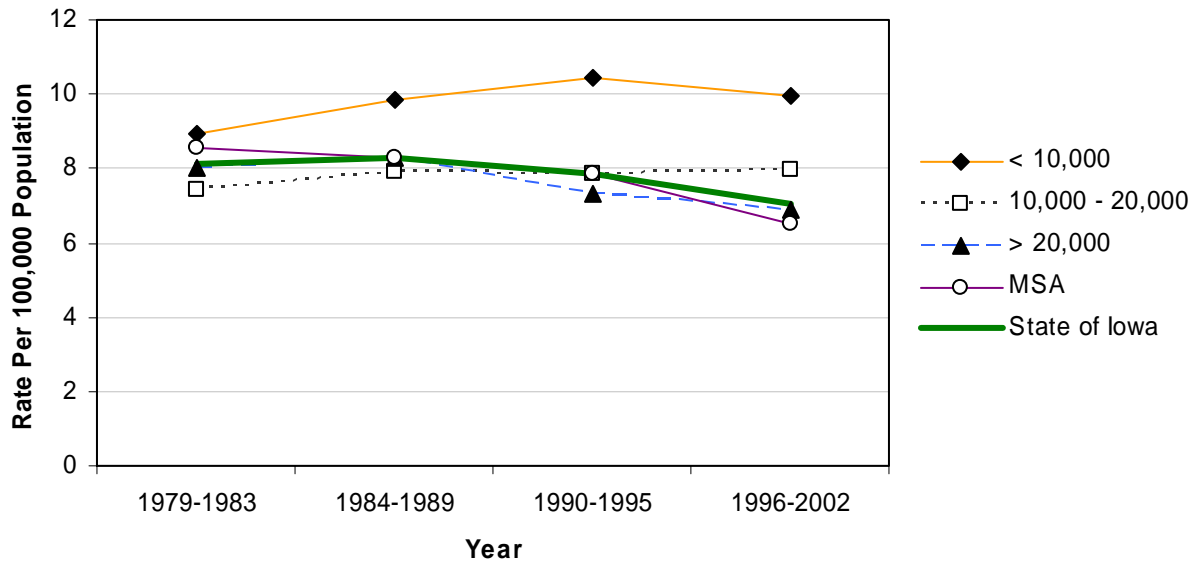
	County	#	Crude ¹	Adjusted ^{1,2}	County	#	Crude ¹	Adjusted ^{1,2}	
	Counties with 2004 Population < 10,000	Adair	8	9.7	8.8	Monona	11	11.0	10.0
Adams		5	11.1	12.4	Monroe	10	12.4	12.4	
Audubon		*	*	*	Osceola	5	7.1	6.5	
Clarke		9	10.2	9.9	Palo Alto	6	5.9	5.7	
Davis		12	14.1	12.5	Pocahontas	6	6.8	6.0	
Decatur		12	14.1	14.2	Ringgold	6	11.1	10.7	
Fremont		7	8.7	9.7	Taylor	7	10.0	6.8	
Howard		6	6.0	6.9	Van Buren	14	18.1	17.6	
Ida		*	*	*	Wayne	5	7.3	8.8	
Lucas		7	7.5	7.4	Worth	8	10.1	11.5	
					Total	151	9.4	9.2	
Counties with 2004 Population 10,000 – 20,000		Allamakee	14	9.7	10.6	Hardin	17	9.0	8.1
		Appanoose	12	8.8	8.3	Humboldt	15	14.4	15.0
	Butler	11	7.1	7.2	Iowa	12	7.8	8.2	
	Calhoun	6	5.3	5.8	Jefferson	21	12.8	13.4	
	Cass	10	6.7	7.2	Keokuk	12	10.5	8.8	
	Cedar	19	10.6	11.0	Kossuth	7	4.0	4.1	
	Cherokee	8	6.0	5.7	Louisa	8	6.6	6.5	
	Chickasaw	11	8.3	8.5	Lyon	6	5.1	6.0	
	Clay	11	6.3	5.8	Mitchell	*	*	*	
	Clayton	21	11.2	11.1	Montgomery	13	11.0	10.8	
	Crawford	8	4.7	4.9	O'Brien	9	5.9	6.7	
	Delaware	10	5.4	5.9	Page	12	7.1	6.7	
	Dickinson	10	6.2	6.6	Poweshiek	16	8.5	8.0	
	Emmet	8	7.1	6.8	Sac	7	6.0	6.2	
	Floyd	12	7.1	6.1	Shelby	12	9.1	10.0	
	Franklin	8	7.3	8.8	Tama	25	13.9	14.0	
	Greene	7	6.8	7.0	Union	13	10.5	11.2	
	Hamilton	14	8.6	8.5	Winnebago	8	6.8	6.8	
	Hancock	7	5.8	5.5	Wright	7	4.9	5.1	
				Total	427-431	7.8-7.9	7.8-7.9		
Counties with 2004 Population > 20,000	Boone	18	7.0	6.9	Lee	31	8.1	8.1	
	Buchanan	14	6.6	6.9	Mahaska	13	5.9	6.1	
	Buena Vista	11	5.4	6.1	Marion	26	8.2	8.5	
	Carroll	14	6.5	6.2	Marshall	35	9.0	9.1	
	Cerro Gordo	41	8.8	8.8	Muscatine	25	6.0	6.1	
	Clinton	46	9.1	8.7	Plymouth	10	4.1	4.4	
	Des Moines	51	12.0	11.8	Sioux	14	4.4	4.0	
	Fayette	8	3.6	4.0	Wapello	43	11.9	11.7	
	Henry	7	3.5	3.3	Webster	23	5.8	5.7	
	Jackson	15	7.4	7.4	Winneshiek	7	3.3	3.2	
	Jasper	15	4.1	3.9	Total	467	7.1	7.1	
MSA Counties	Benton	15	6.1	6.4	Linn	110	5.9	5.8	
	Black Hawk	72	5.7	5.5	Madison	14	10.3	10.5	
	Bremer	13	5.6	5.6	Mills	10	7.1	7.5	
	Dallas	29	7.7	8.1	Polk	304	8.3	8.4	
	Dubuque	50	5.6	5.6	Pottawattamie	88	10.2	10.2	
	Grundy	13	10.6	11.4	Scott	101	6.4	6.5	
	Guthrie	11	9.8	9.8	Story	32	4.1	4.3	
	Harrison	19	12.3	12.5	Warren	32	8.1	8.1	
	Johnson	37	3.4	3.3	Washington	14	6.8	6.5	
	Jones	13	6.4	6.3	Woodbury	66	6.4	6.4	
					Total	1,043	6.8	6.7	
State Total		2,092	7.2	7.1					

¹Rates per 100,000 population
²Adjusted to year 2000 population

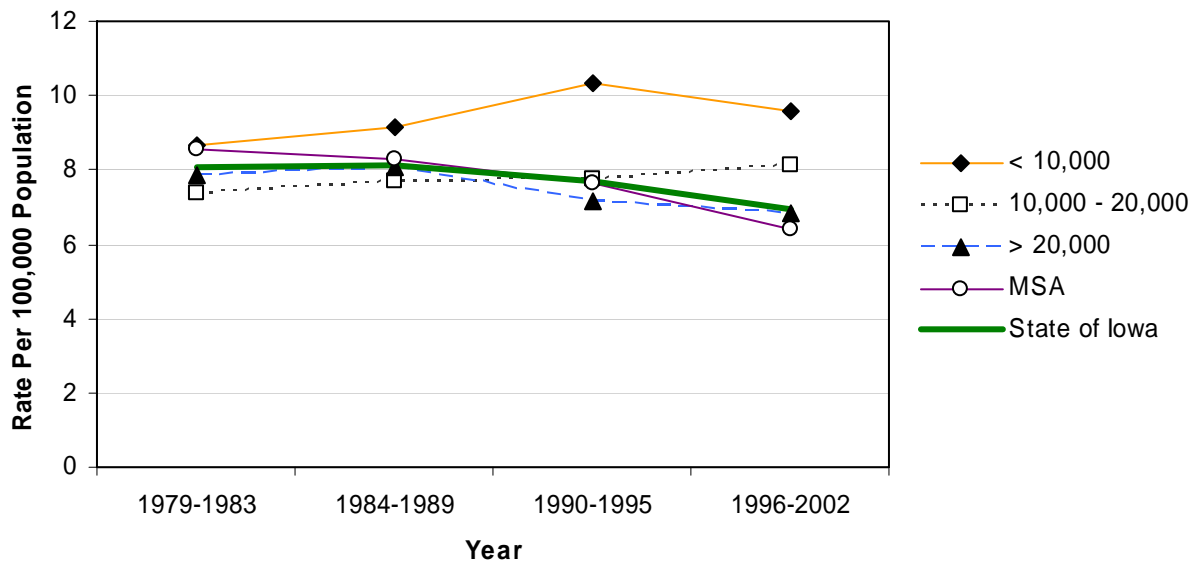
Source: Iowa Department of Public Health via Iowa Cancer Registry

Firearms Mortality by County Group 1979-2002

Crude Rates



Age-Adjusted Rates



Falls Mortality 1993-2002

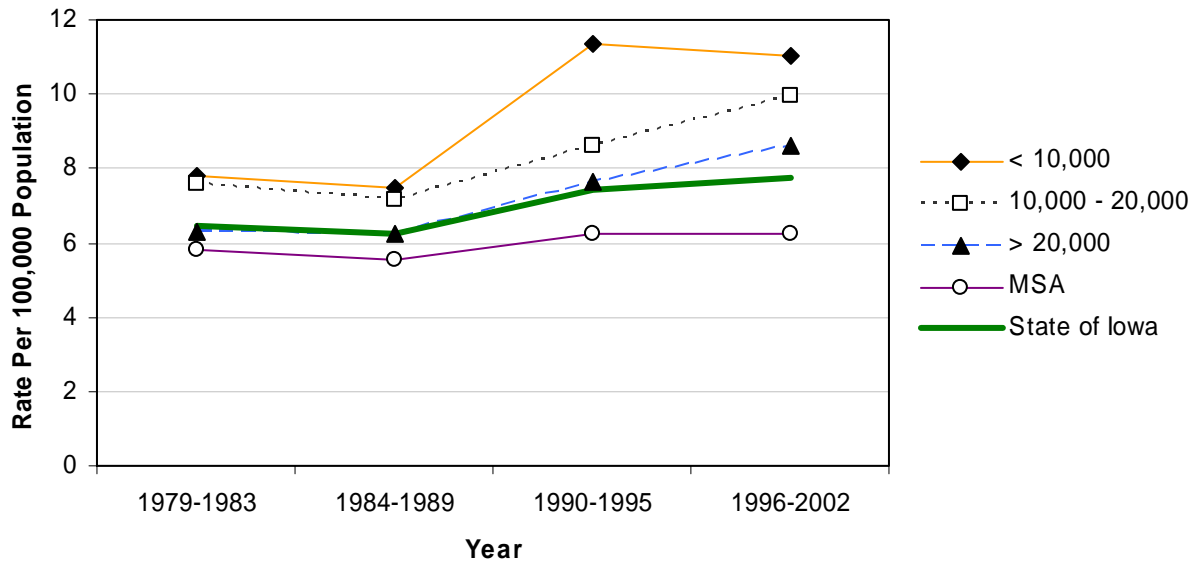
	County	#	Crude ¹	Adjusted ^{1,2}	County	#	Crude ¹	Adjusted ^{1,2}	
Counties with 2004 Population < 10,000	Adair	12	14.5	6.3	Monona	9	9.0	5.3	
	Adams	8	17.7	9.0	Monroe	7	8.7	5.6	
	Audubon	12	17.5	10.7	Osceola	*	*	*	
	Clarke	5	5.7	3.3	Palo Alto	12	11.7	7.1	
	Davis	12	14.1	8.4	Pocahontas	11	12.4	6.2	
	Decatur	7	8.2	8.3	Ringgold	*	*	*	
	Fremont	10	12.4	7.6	Taylor	7	10.0	4.4	
	Howard	11	11.1	5.3	Van Buren	8	10.3	6.7	
	Ida	11	13.8	7.6	Wayne	12	17.5	7.5	
	Lucas	9	9.6	5.7	Worth	6	7.6	4.5	
					Total	174	10.9	6.1	
	Counties with 2004 Population 10,000 – 20,000	Allamakee	18	12.4	7.5	Hardin	24	12.7	6.2
		Appanoose	15	10.9	7.6	Humboldt	9	8.6	4.8
Butler		12	7.8	4.9	Iowa	11	7.1	4.7	
Calhoun		21	18.6	9.1	Jefferson	9	5.5	4.6	
Cass		17	11.5	6.4	Keokuk	17	14.8	7.3	
Cedar		25	13.9	9.1	Kossuth	15	8.6	5.2	
Cherokee		9	6.8	4.0	Louisa	8	6.6	5.5	
Chickasaw		9	6.8	4.8	Lyon	15	12.7	7.3	
Clay		9	5.1	3.3	Mitchell	7	6.4	3.5	
Clayton		20	10.6	6.9	Montgomery	25	21.2	11.2	
Crawford		13	7.7	5.0	O'Brien	8	5.2	3.1	
Delaware		10	5.4	4.3	Page	16	9.4	5.4	
Dickinson		16	10.0	6.0	Poweshiek	27	14.3	8.8	
Emmet		18	16.0	8.2	Sac	16	13.6	6.8	
Floyd		11	6.5	3.5	Shelby	12	9.1	4.8	
Franklin		8	7.3	4.4	Tama	9	5.0	3.2	
Greene		17	16.5	9.0	Union	17	13.8	8.5	
Hamilton	8	4.9	3.2	Winnebago	8	6.8	4.7		
Hancock	9	7.5	4.9	Wright	18	12.5	6.7		
				Total	536	9.8	5.9		
Counties with 2004 Population > 20,000	Boone	24	9.3	6.1	Lee	32	8.3	5.9	
	Buchanan	19	9.0	7.5	Mahaska	19	8.6	6.2	
	Buena Vista	15	7.3	4.7	Marion	27	8.5	6.0	
	Carroll	21	9.8	6.1	Marshall	39	10.0	7.2	
	Cerro Gordo	28	6.0	4.2	Muscatine	24	5.8	5.2	
	Clinton	35	6.9	5.6	Plymouth	16	6.5	4.9	
	Des Moines	34	8.0	6.1	Sioux	24	7.6	6.2	
	Fayette	22	10.0	6.7	Wapello	36	10.0	6.8	
	Henry	17	8.5	6.2	Webster	56	14.1	9.1	
	Jackson	12	5.9	4.4	Winneshiek	17	8.0	5.4	
	Jasper	27	7.4	5.7	Total	544	8.3	6.1	
MSA Counties	Benton	15	6.1	4.9	Linn	116	6.2	6.2	
	Black Hawk	84	6.6	5.9	Madison	15	11.0	8.0	
	Bremer	21	9.0	7.1	Mills	7	5.0	4.7	
	Dallas	21	5.6	5.3	Polk	231	6.3	6.9	
	Dubuque	49	5.5	4.5	Pottawattamie	47	5.5	5.3	
	Grundy	11	9.0	5.2	Scott	100	6.4	6.8	
	Guthrie	11	9.8	5.9	Story	37	4.7	5.2	
	Harrison	21	13.6	8.7	Warren	26	6.6	6.5	
	Johnson	35	3.3	5.0	Washington	26	12.7	6.9	
	Jones	13	6.4	4.9	Woodbury	81	7.8	7.1	
					Total	967	6.3	6.2	
State Total	2,221	7.7	6.1						

¹Rates per 100,000 population
²Adjusted to year 2000 population

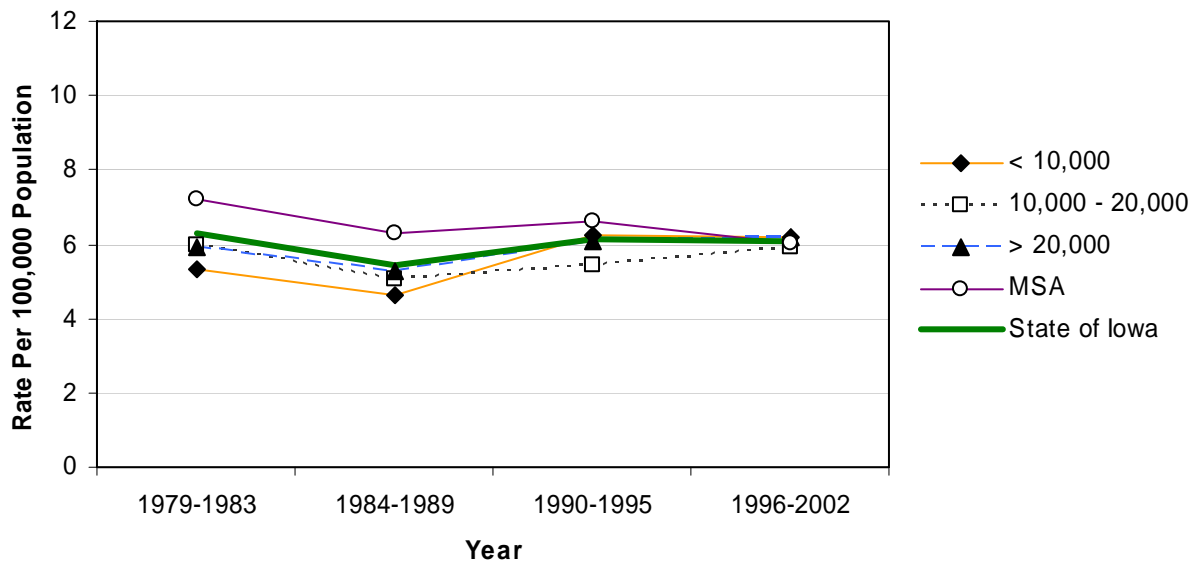
Source: Iowa Department of Public Health via Iowa Cancer Registry

Falls Mortality by County Group 1979-2002

Crude Rates



Age-Adjusted Rates



Homicides 1993-2002

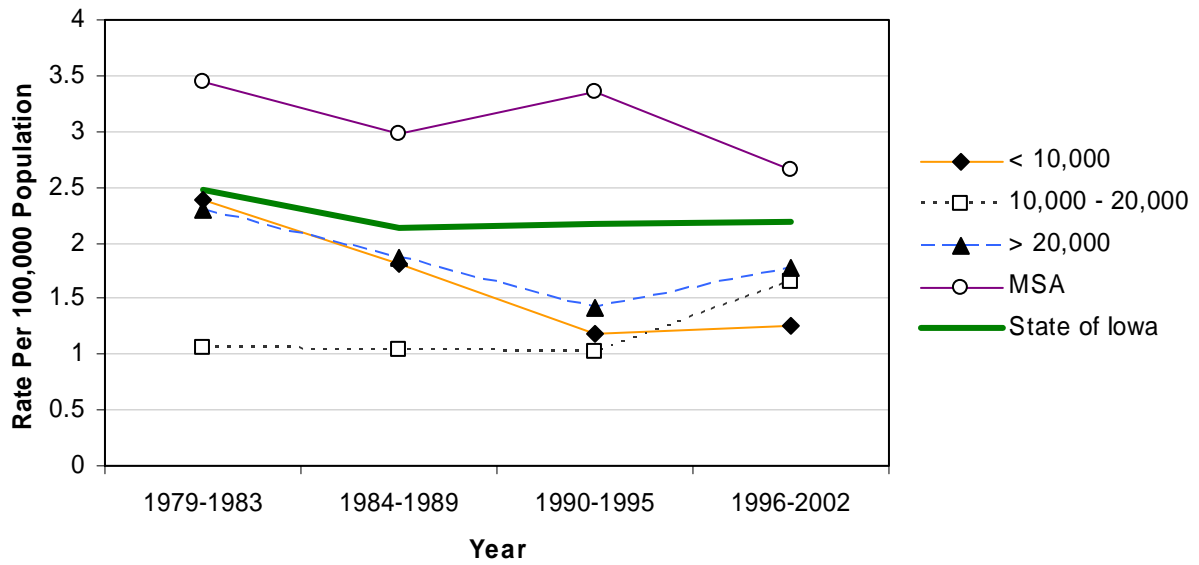
	County	#	Crude ¹	Adjusted ^{1,2}	County	#	Crude ¹	Adjusted ^{1,2}	
Counties with 2004 Population < 10,000	Adair	*	*	*	Monona	*	*	*	
	Adams	*	*	*	Monroe	*	*	*	
	Audubon	*	*	*	Osceola	*	*	*	
	Clarke	*	*	*	Palo Alto	*	*	*	
	Davis	*	*	*	Pocahontas	*	*	*	
	Decatur	*	*	*	Ringgold	*	*	*	
	Fremont	*	*	*	Taylor	*	*	*	
	Howard	*	*	*	Van Buren	*	*	*	
	Ida	*	*	*	Wayne	*	*	*	
	Lucas	*	*	*	Worth	*	*	*	
					Total	19	1.2	1.3	
	Counties with 2004 Population 10,000 – 20,000	Allamakee	*	*	*	Hardin	7	3.7	3.8
		Appanoose	*	*	*	Humboldt	*	*	*
Butler		*	*	*	Iowa	*	*	*	
Calhoun		*	*	*	Jefferson	*	*	*	
Cass		*	*	*	Keokuk	*	*	*	
Cedar		*	*	*	Kossuth	*	*	*	
Cherokee		*	*	*	Louisa	*	*	*	
Chickasaw		*	*	*	Lyon	*	*	*	
Clay		*	*	*	Mitchell	*	*	*	
Clayton		*	*	*	Montgomery	*	*	*	
Crawford		*	*	*	O'Brien	*	*	*	
Delaware		*	*	*	Page	*	*	*	
Dickinson		*	*	*	Poweshiek	5	2.6	2.8	
Emmet		*	*	*	Sac	*	*	*	
Floyd		*	*	*	Shelby	*	*	*	
Franklin		5	4.6	5.2	Tama	8	4.5	5.0	
Greene		*	*	*	Union	6	4.9	5.5	
Hamilton	*	*	*	Winnebago	*	*	*		
Hancock	*	*	*	Wright	*	*	*		
				Total	80	1.5	1.6		
Counties with 2004 Population > 20,000	Boone	*	*	*	Lee	5	1.3	1.3	
	Buchanan	*	*	*	Mahaska	*	*	*	
	Buena Vista	*	*	*	Marion	6	1.9	2.0	
	Carroll	*	*	*	Marshall	11	2.8	2.8	
	Cerro Gordo	16	3.4	3.6	Muscatine	6	1.4	1.4	
	Clinton	7	1.4	1.4	Plymouth	*	*	*	
	Des Moines	6	1.4	1.4	Sioux	5	1.6	1.5	
	Fayette	*	*	*	Wapello	12	3.3	3.6	
	Henry	*	*	*	Webster	8	2.0	2.0	
	Jackson	*	*	*	Winneshiek	*	*	*	
	Jasper	*	*	*	Total	106	1.6	1.7	
MSA Counties	Benton	*	*	*	Linn	31	1.7	1.6	
	Black Hawk	29	2.3	2.2	Madison	5	3.7	3.7	
	Bremer	*	*	*	Mills	*	*	*	
	Dallas	5	1.3	1.4	Polk	186	5.1	5.0	
	Dubuque	*	*	*	Pottawattamie	47	5.5	5.6	
	Grundy	*	*	*	Scott	49	3.1	3.1	
	Guthrie	*	*	*	Story	5	0.6	0.8	
	Harrison	*	*	*	Warren	7	1.8	1.7	
	Johnson	18	1.7	1.7	Washington	*	*	*	
	Jones	*	*	*	Woodbury	33	3.2	3.2	
				Total	431	2.8	2.7		
State Total	636	2.2	2.2						

¹Rates per 100,000 population
²Adjusted to year 2000 population

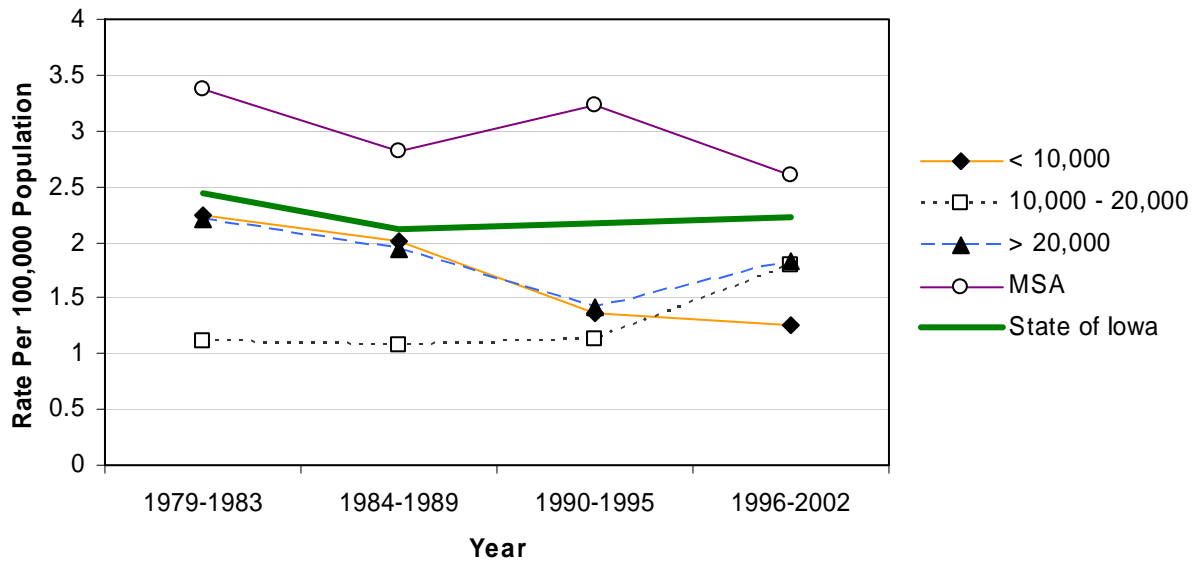
Source: Iowa Department of Public Health via Iowa Cancer Registry

Homicides by County Group 1979-2002

Crude Rates



Age-Adjusted Rates



Poisoning Mortality 1993-2002

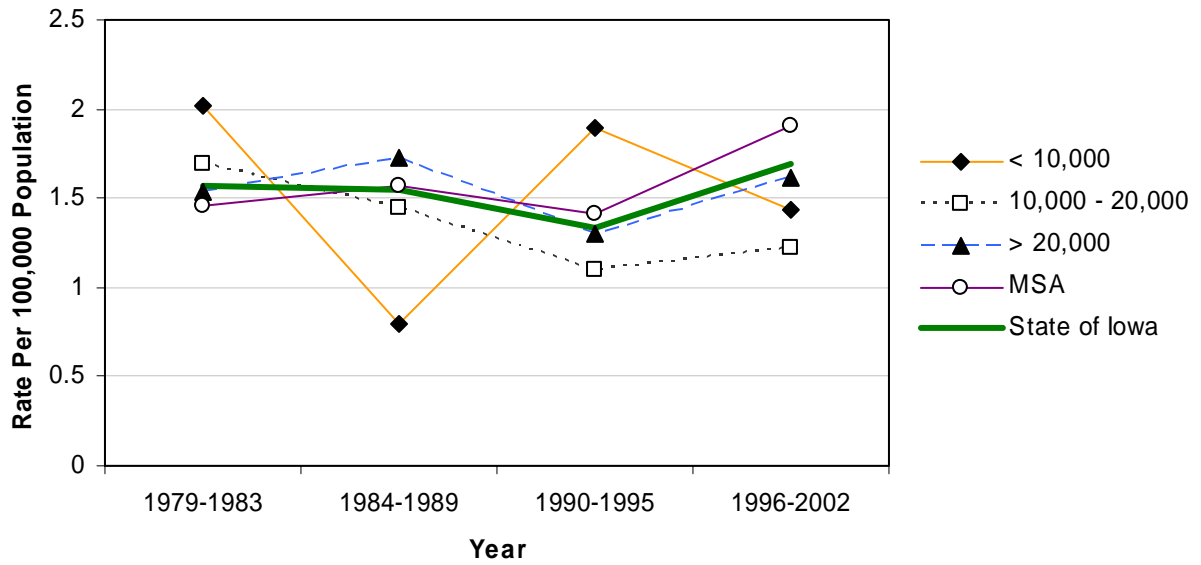
	County	#	Crude ¹	Adjusted ^{1,2}	County	#	Crude ¹	Adjusted ^{1,2}	
Counties with 2004 Population < 10,000	Adair	*	*	*	Monona	*	*	*	
	Adams	*	*	*	Monroe	*	*	*	
	Audubon	*	*	*	Osceola	*	*	*	
	Clarke	*	*	*	Palo Alto	*	*	*	
	Davis	*	*	*	Pocahontas	*	*	*	
	Decatur	*	*	*	Ringgold	*	*	*	
	Fremont	*	*	*	Taylor	*	*	*	
	Howard	*	*	*	Van Buren	*	*	*	
	Ida	*	*	*	Wayne	*	*	*	
	Lucas	*	*	*	Worth	*	*	*	
					Total	23	1.4	1.3	
	Counties with 2004 Population 10,000 – 20,000	Allamakee	*	*	*	Hardin	5	2.7	2.9
		Appanoose	*	*	*	Humboldt	*	*	*
Butler		*	*	*	Iowa	*	*	*	
Calhoun		*	*	*	Jefferson	*	*	*	
Cass		*	*	*	Keokuk	*	*	*	
Cedar		*	*	*	Kossuth	*	*	*	
Cherokee		5	3.8	3.1	Louisa	*	*	*	
Chickasaw		*	*	*	Lyon	*	*	*	
Clay		*	*	*	Mitchell	*	*	*	
Clayton		*	*	*	Montgomery	*	*	*	
Crawford		*	*	*	O'Brien	*	*	*	
Delaware		*	*	*	Page	*	*	*	
Dickinson		*	*	*	Poweshiek	5	2.6	3.0	
Emmet		*	*	*	Sac	*	*	*	
Floyd		*	*	*	Shelby	*	*	*	
Franklin		*	*	*	Tama	*	*	*	
Greene		*	*	*	Union	*	*	*	
Hamilton		*	*	*	Winnebago	*	*	*	
Hancock	*	*	*	Wright	*	*	*		
				Total	61	1.1	1.0		
Counties with 2004 Population > 20,000	Boone	5	1.9	1.9	Lee	8	2.1	2.0	
	Buchanan	*	*	*	Mahaska	7	3.2	3.1	
	Buena Vista	*	*	*	Marion	*	*	*	
	Carroll	*	*	*	Marshall	7	1.8	1.8	
	Cerro Gordo	9	1.9	1.8	Muscatine	5	1.2	1.2	
	Clinton	6	1.2	1.1	Plymouth	6	2.4	2.6	
	Des Moines	8	1.9	1.9	Sioux	*	*	*	
	Fayette	9	4.1	4.0	Wapello	6	1.7	1.8	
	Henry	*	*	*	Webster	*	*	*	
	Jackson	*	*	*	Winneshiek	*	*	*	
	Jasper	6	1.6	1.6	Total	103	1.6	1.6	
	MSA Counties	Benton	*	*	*	Linn	41	2.2	2.1
Black Hawk		23	1.8	1.8	Madison	*	*	*	
Bremer		*	*	*	Mills	*	*	*	
Dallas		*	*	*	Polk	72	2.0	1.9	
Dubuque		5	0.6	0.6	Pottawattamie	19	2.2	2.2	
Grundy		*	*	*	Scott	32	2.0	2.0	
Guthrie		*	*	*	Story	8	1.0	1.0	
Harrison		*	*	*	Warren	*	*	*	
Johnson		24	2.2	2.2	Washington	*	*	*	
Jones		*	*	*	Woodbury	33	3.2	3.2	
					Total	278	1.8	1.8	
State Total		465	1.6	1.6					

¹Rates per 100,000 population
²Adjusted to year 2000 population

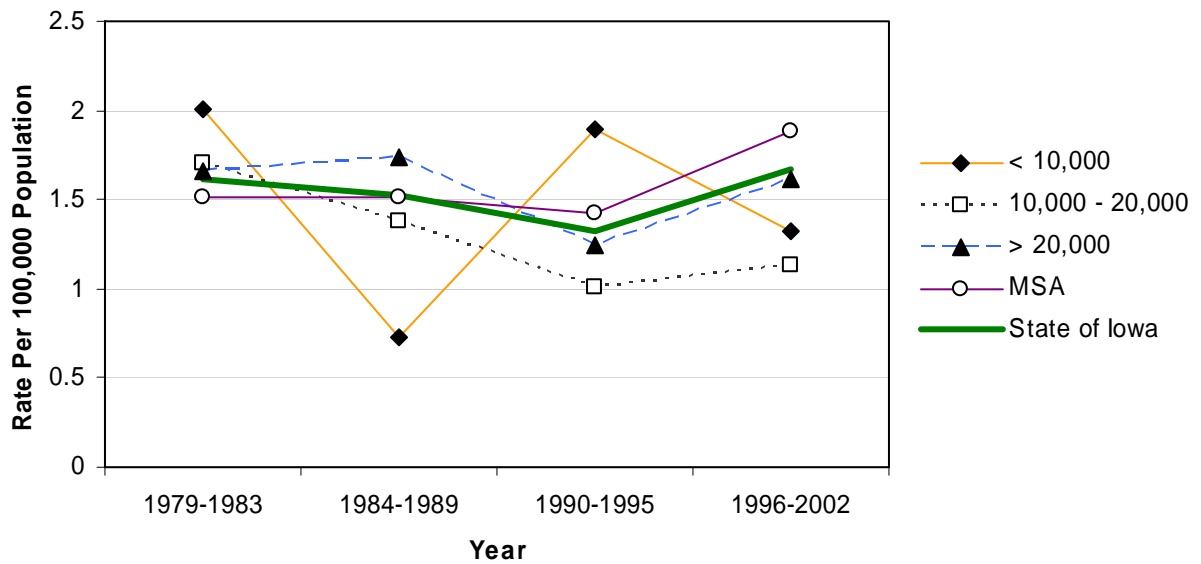
Source: Iowa Department of Public Health via Iowa Cancer Registry

Poisoning Mortality by County Group 1979-2002

Crude Rates



Age-Adjusted Rates



Burns Mortality 1993-2002

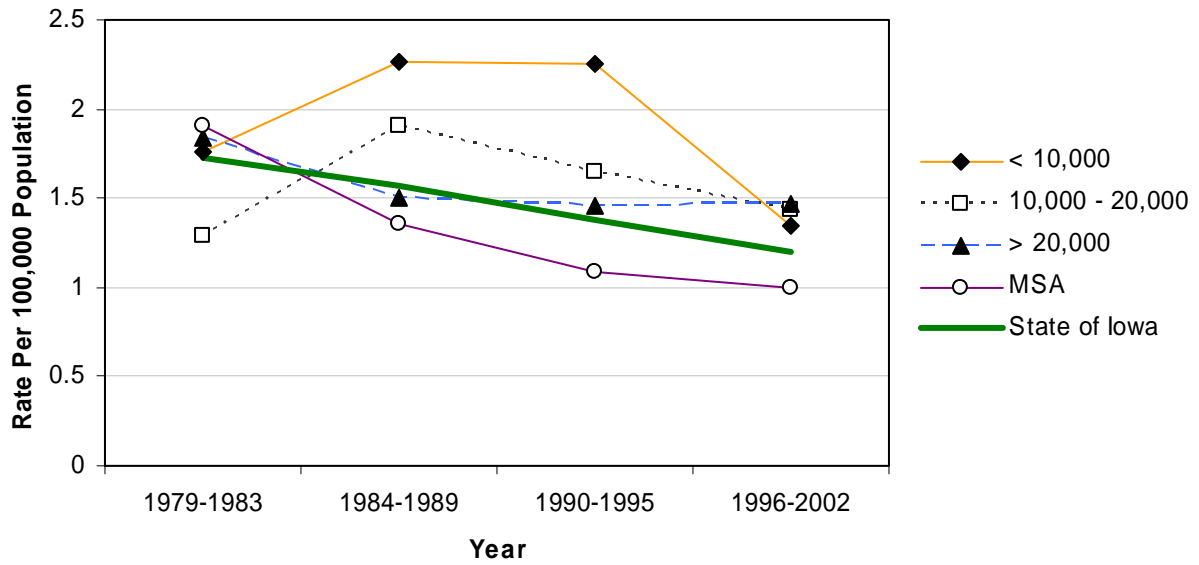
	County	#	Crude ¹	Adjusted ^{1,2}	County	#	Crude ¹	Adjusted ^{1,2}	
Counties with 2004 Population < 10,000	Adair	*	*	*	Monona	*	*	*	
	Adams	*	*	*	Monroe	*	*	*	
	Audubon	*	*	*	Osceola	*	*	*	
	Clarke	*	*	*	Palo Alto	*	*	*	
	Davis	*	*	*	Pocahontas	*	*	*	
	Decatur	*	*	*	Ringgold	*	*	*	
	Fremont	*	*	*	Taylor	*	*	*	
	Howard	*	*	*	Van Buren	*	*	*	
	Ida	*	*	*	Wayne	*	*	*	
	Lucas	*	*	*	Worth	*	*	*	
					Total	24	1.5	1.3	
	Counties with 2004 Population 10,000 – 20,000	Allamakee	*	*	*	Hardin	*	*	*
		Appanoose	*	*	*	Humboldt	*	*	*
Butler		*	*	*	Iowa	*	*	*	
Calhoun		*	*	*	Jefferson	*	*	*	
Cass		*	*	*	Keokuk	*	*	*	
Cedar		*	*	*	Kossuth	*	*	*	
Cherokee		*	*	*	Louisa	5	4.1	4.1	
Chickasaw		*	*	*	Lyon	*	*	*	
Clay		*	*	*	Mitchell	*	*	*	
Clayton		*	*	*	Montgomery	*	*	*	
Crawford		*	*	*	O'Brien	*	*	*	
Delaware		*	*	*	Page	*	*	*	
Dickinson		*	*	*	Poweshiek	*	*	*	
Emmet		*	*	*	Sac	*	*	*	
Floyd		*	*	*	Shelby	*	*	*	
Franklin		*	*	*	Tama	*	*	*	
Greene		*	*	*	Union	*	*	*	
Hamilton	*	*	*	Winnebago	9	7.7	7.6		
Hancock	*	*	*	Wright	*	*	*		
				Total	79	1.4	1.3		
Counties with 2004 Population > 20,000	Boone	*	*	*	Lee	18	4.7	5.1	
	Buchanan	*	*	*	Mahaska	6	2.7	2.7	
	Buena Vista	5	2.4	2.5	Marion	5	1.6	1.4	
	Carroll	*	*	*	Marshall	5	1.3	1.1	
	Cerro Gordo	5	1.1	0.9	Muscatine	5	1.2	1.2	
	Clinton	10	2.0	2.0	Plymouth	*	*	*	
	Des Moines	6	1.4	1.3	Sioux	*	*	*	
	Fayette	*	*	*	Wapello	11	3.1	2.8	
	Henry	*	*	*	Webster	5	1.3	1.3	
	Jackson	*	*	*	Winneshiek	*	*	*	
	Jasper	6	1.6	1.4	Total	107	1.6	1.6	
MSA Counties	Benton	*	*	*	Linn	15	0.8	0.8	
	Black Hawk	21	1.6	1.6	Madison	*	*	*	
	Bremer	*	*	*	Mills	*	*	*	
	Dallas	*	*	*	Polk	39	1.1	1.1	
	Dubuque	*	*	*	Pottawattamie	7	0.8	0.8	
	Grundy	*	*	*	Scott	17	1.1	1.1	
	Guthrie	*	*	*	Story	6	0.8	0.9	
	Harrison	*	*	*	Warren	*	*	*	
	Johnson	10	0.9	1.1	Washington	7	3.4	3.1	
	Jones	*	*	*	Woodbury	11	1.1	1.0	
					Total	160	1.0	1.0	
	State Total	370	1.3	1.2					

¹Rates per 100,000 population
²Adjusted to year 2000 population

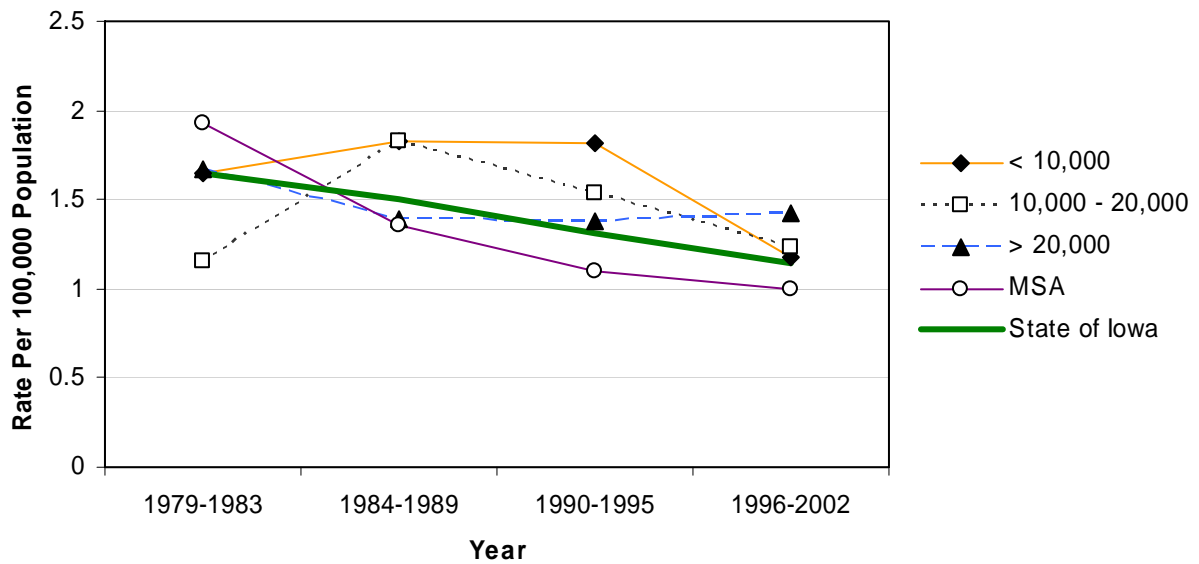
Source: Iowa Department of Public Health via Iowa Cancer Registry

Burns Mortality by County Group 1979-2002

Crude Rates



Age-Adjusted Rates



Drowning Mortality 1993-2002

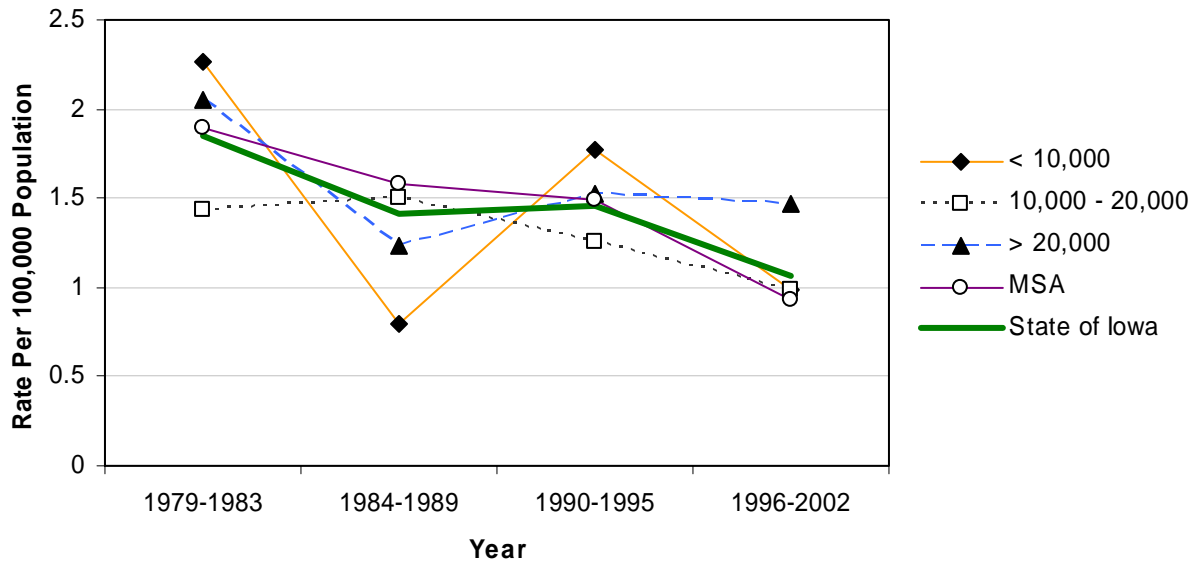
	County	#	Crude ¹	Adjusted ^{1,2}	County	#	Crude ¹	Adjusted ^{1,2}	
Counties with 2004 Population < 10,000	Adair	*	*	*	Monona	*	*	*	
	Adams	*	*	*	Monroe	*	*	*	
	Audubon	*	*	*	Osceola	*	*	*	
	Clarke	*	*	*	Palo Alto	*	*	*	
	Davis	*	*	*	Pocahontas	*	*	*	
	Decatur	*	*	*	Ringgold	*	*	*	
	Fremont	*	*	*	Taylor	*	*	*	
	Howard	*	*	*	Van Buren	*	*	*	
	Ida	*	*	*	Wayne	*	*	*	
	Lucas	*	*	*	Worth	*	*	*	
					Total	20	1.3	1.3	
	Counties with 2004 Population 10,000 – 20,000	Allamakee	*	*	*	Hardin	*	*	*
		Appanoose	*	*	*	Humboldt	*	*	*
Butler		*	*	*	Iowa	*	*	*	
Calhoun		*	*	*	Jefferson	*	*	*	
Cass		*	*	*	Keokuk	*	*	*	
Cedar		*	*	*	Kossuth	*	*	*	
Cherokee		*	*	*	Louisa	6	5.0	4.9	
Chickasaw		*	*	*	Lyon	*	*	*	
Clay		*	*	*	Mitchell	*	*	*	
Clayton		*	*	*	Montgomery	*	*	*	
Crawford		*	*	*	O'Brien	*	*	*	
Delaware		*	*	*	Page	*	*	*	
Dickinson		*	*	*	Poweshiek	*	*	*	
Emmet		*	*	*	Sac	*	*	*	
Floyd		*	*	*	Shelby	*	*	*	
Franklin		*	*	*	Tama	*	*	*	
Greene		*	*	*	Union	*	*	*	
Hamilton		*	*	*	Winnebago	*	*	*	
Hancock	*	*	*	Wright	*	*	*		
				Total	60	1.1	1.1		
Counties with 2004 Population > 20,000	Boone	*	*	*	Lee	14	3.6	3.5	
	Buchanan	*	*	*	Mahaska	*	*	*	
	Buena Vista	*	*	*	Marion	*	*	*	
	Carroll	*	*	*	Marshall	7	1.8	2.0	
	Cerro Gordo	8	1.7	1.8	Muscatine	*	*	*	
	Clinton	9	1.8	1.8	Plymouth	*	*	*	
	Des Moines	7	1.6	1.7	Sioux	*	*	*	
	Fayette	*	*	*	Wapello	8	2.2	2.4	
	Henry	*	*	*	Webster	5	1.3	1.4	
	Jackson	*	*	*	Winneshiek	*	*	*	
	Jasper	9	2.5	2.6	Total	95	1.5	1.5	
	MSA Counties	Benton	*	*	*	Linn	17	0.9	0.9
Black Hawk		10	0.8	0.8	Madison	*	*	*	
Bremer		*	*	*	Mills	*	*	*	
Dallas		10	2.6	2.6	Polk	39	1.1	1.0	
Dubuque		5	0.6	0.6	Pottawattamie	17	2.0	2.0	
Grundy		*	*	*	Scott	15	1.0	0.9	
Guthrie		*	*	*	Story	5	0.6	0.7	
Harrison		*	*	*	Warren	*	*	*	
Johnson		9	0.8	1.0	Washington	*	*	*	
Jones		6	3.0	3.1	Woodbury	12	1.2	1.2	
					Total	156	1.0	1.0	
State Total		331	1.1	1.1					

¹Rates per 100,000 population
²Adjusted to year 2000 population

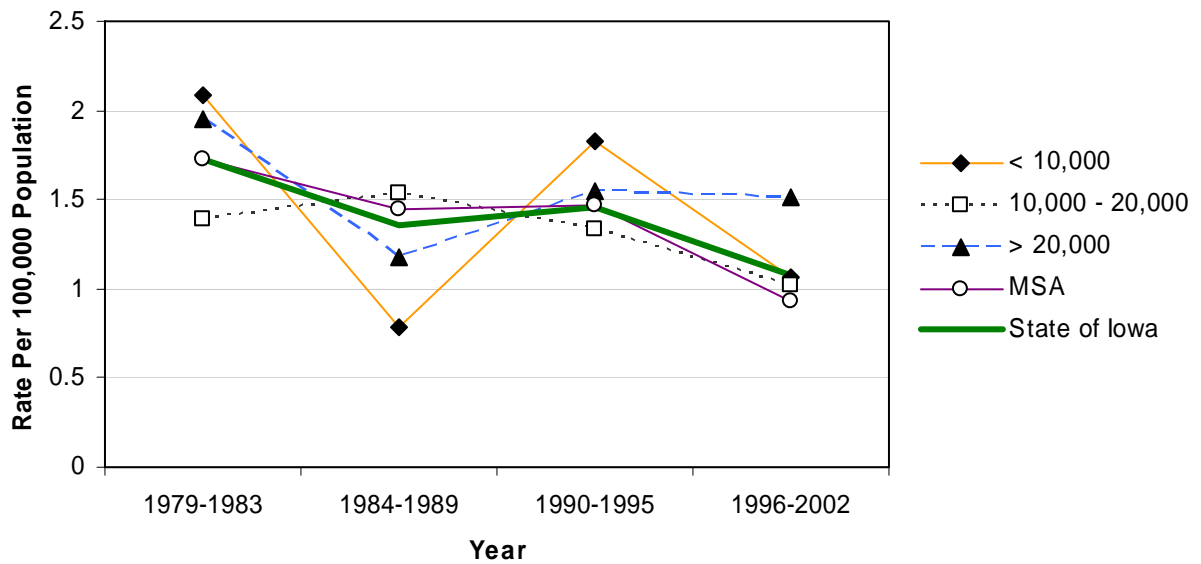
Source: Iowa Department of Public Health via Iowa Cancer Registry

Drowning Mortality by County Group 1979-2002

Crude Rates



Age-Adjusted Rates



All Other Unintentional Mortality 1993-2002

	County	#	Crude ¹ (Rank ³)	Adjusted ^{1,2} (Rank ³)	County	#	Crude ¹ (Rank ³)	Adjusted ^{1,2} (Rank ³)	
	Counties with 2004 Population < 10,000	Adair	8	9.7 (59)	6.5 (70)	Monona	16	16.0 (12)	10.9 (16)
Adams		6	13.3 (21)	10.0 (27)	Monroe	6	7.4 (80)	5.1 (95)	
Audubon		9	13.1 (23)	7.0 (62)	Osceola	5	7.1 (84)	6.3 (74)	
Clarke		11	12.5 (31)	10.6 (20)	Palo Alto	14	13.7 (20)	10.2 (25)	
Davis		16	18.8 (04)	14.1 (04)	Pocahontas	6	6.8 (85)	5.7 (86)	
Decatur		16	18.8 (03)	16.2 (02)	Ringgold	9	16.6 (08)	13.5 (05)	
Fremont		13	16.2 (11)	12.5 (09)	Taylor	14	20.0 (02)	11.2 (14)	
Howard		13	13.1 (24)	9.8 (28)	Van Buren	19	24.5 (01)	19.1 (01)	
Ida		15	18.8 (05)	15.3 (03)	Wayne	8	11.7 (37)	8.6 (44)	
Lucas		7	7.5 (79)	5.5 (91)	Worth	9	11.4 (39)	8.5 (45)	
					Total	220	13.8	10.2	
Counties with 2004 Population 10,000 – 20,000		Allamakee	19	13.1 (22)	9.2 (33)	Hardin	27	14.3 (18)	10.3 (24)
		Appanoose	9	6.6 (89)	5.3 (93)	Humboldt	9	8.6 (64)	6.2 (78)
	Butler	20	13.0 (27)	9.4 (30)	Iowa	16	10.4 (51)	7.2 (59)	
	Calhoun	11	9.8 (58)	6.2 (79)	Jefferson	11	6.7 (86)	6.1 (81)	
	Cass	24	16.2 (10)	11.4 (12)	Keokuk	16	14.0 (19)	10.6 (19)	
	Cedar	15	8.4 (69)	6.5 (69)	Kossuth	19	10.9 (46)	8.6 (40)	
	Cherokee	13	9.8 (57)	8.2 (49)	Louisa	15	12.4 (33)	11.5 (11)	
	Chickasaw	14	10.6 (49)	7.8 (56)	Lyon	6	5.1 (97)	3.3 (99)	
	Clay	15	8.6 (67)	6.5 (71)	Mitchell	16	14.7 (16)	11.2 (15)	
	Clayton	22	11.7 (36)	8.9 (37)	Montgomery	13	11.0 (45)	7.0 (64)	
	Crawford	19	11.3 (42)	9.3 (31)	O'Brien	16	10.4 (50)	8.2 (48)	
	Delaware	10	5.4 (94)	5.0 (96)	Page	26	15.3 (14)	9.3 (32)	
	Dickinson	20	12.5 (32)	8.7 (39)	Poweshiek	21	11.1 (44)	8.4 (46)	
	Emmet	19	16.9 (07)	11.8 (10)	Sac	6	5.1 (96)	3.7 (98)	
	Floyd	16	9.5 (61)	7.3 (58)	Shelby	19	14.4 (17)	8.9 (36)	
	Franklin	13	11.9 (34)	8.0 (53)	Tama	15	8.4 (70)	6.6 (68)	
	Greene	8	7.8 (75)	5.5 (92)	Union	16	13.0 (28)	10.0 (26)	
	Hamilton	13	8.0 (73)	6.0 (83)	Winnebago	20	17.1 (06)	11.2 (13)	
	Hancock	12	9.9 (52)	8.0 (54)	Wright	18	12.5 (30)	9.1 (35)	
				Total	597	10.9	8.1		
Counties with 2004 Population > 20,000	Boone	30	11.6 (38)	8.6 (42)	Lee	33	8.6 (66)	7.0 (63)	
	Buchanan	20	9.5 (60)	8.6 (41)	Mahaska	16	7.2 (81)	5.5 (90)	
	Buena Vista	20	9.8 (54)	8.1 (52)	Marion	40	12.7 (29)	10.9 (17)	
	Carroll	28	13.0 (26)	10.3 (23)	Marshall	44	11.3 (43)	9.1 (34)	
	Cerro Gordo	33	7.1 (83)	5.7 (85)	Muscatine	33	7.9 (74)	7.5 (57)	
	Clinton	38	7.5 (78)	6.8 (66)	Plymouth	24	9.8 (56)	8.8 (38)	
	Des Moines	36	8.5 (68)	6.7 (67)	Sioux	28	8.9 (62)	8.2 (50)	
	Fayette	18	8.2 (71)	5.6 (88)	Wapello	39	10.8 (47)	8.6 (43)	
	Henry	32	15.9 (13)	13.2 (06)	Webster	52	13.1 (25)	10.4 (21)	
	Jackson	20	9.9 (53)	7.9 (55)	Winneshiek	16	7.5 (77)	6.0 (82)	
	Jasper	29	8.0 (72)	7.1 (60)	Total	629	9.6	8.0	
	MSA Counties	Benton	28	11.4 (40)	9.5 (29)	Linn	107	5.7 (93)	5.8 (84)
Black Hawk		111	8.7 (63)	8.3 (47)	Madison	20	14.7 (15)	12.7 (07)	
Bremer		18	7.7 (76)	6.3 (77)	Mills	16	11.3 (41)	10.7 (18)	
Dallas		25	6.6 (88)	6.4 (73)	Polk	190	5.2 (95)	5.6 (89)	
Dubuque		52	5.8 (92)	5.2 (94)	Pottawattamie	54	6.3 (91)	6.1 (80)	
Grundy		12	9.8 (55)	6.3 (76)	Scott	105	6.7 (87)	7.0 (65)	
Guthrie		8	7.1 (82)	4.4 (97)	Story	39	5.0 (98)	5.6 (87)	
Harrison		25	16.2 (09)	12.5 (08)	Warren	25	6.3 (90)	6.4 (72)	
Johnson		51	4.7 (99)	7.1 (61)	Washington	22	10.7 (48)	6.3 (75)	
Jones		24	11.8 (35)	10.4 (22)	Woodbury	89	8.6 (65)	8.1 (51)	
					Total	1,021	6.7	6.6	
State Total		2,467	8.5	7.4					

¹Rates per 100,000 population

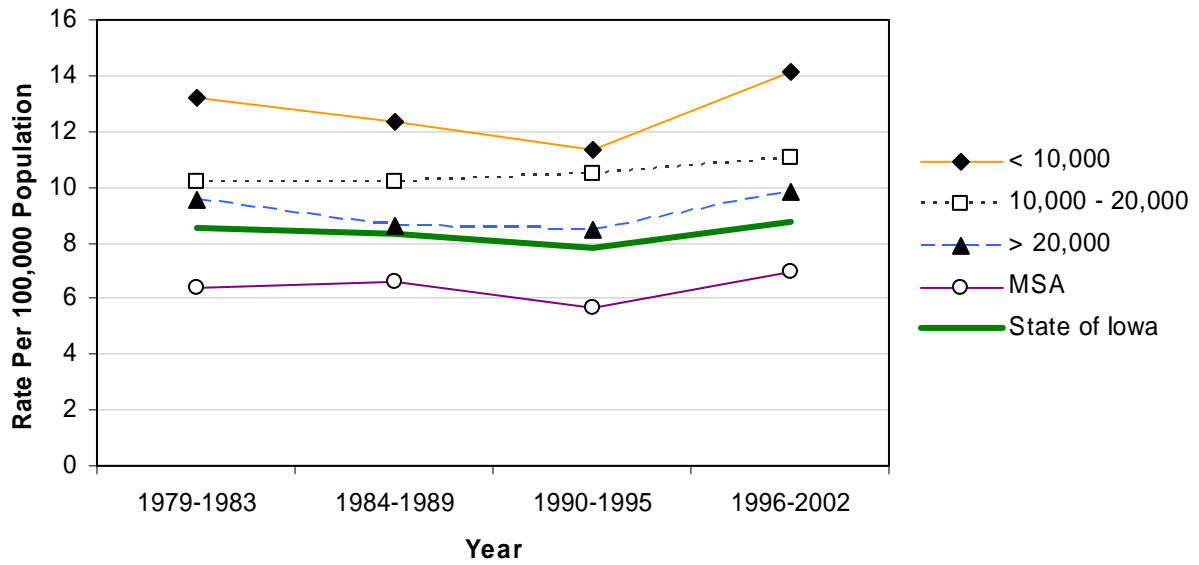
²Adjusted to year 2000 population

³Rank among 99 counties

Source: Iowa Department of Public Health via Iowa Cancer Registry

All Other Unintentional Mortality by County Group 1979-2002

Crude Rates



Age-Adjusted Rates

