

Youth Injury Mortality

Injuries remain the leading cause of death in persons age 1-34 years and contribute the most to years of life lost (YLL), particularly for those events of pre-adult ages. Deaths from unintentional injuries, homicides and suicides are important public health problems in those 15-24 years of age and many of these deaths are preventable.

Transportation fatalities accounted for 340 deaths for youth aged 0-14 from 1993-2002. Of these, 90% were due to motor vehicle traffic death. In the 15-19 age range, 696 transportation deaths occurred over this same period with 97% accounted for by motor vehicle traffic deaths. In general, transportation mortality rates are higher in the more rural counties for both age groups. For 15-19 year-olds during 1996 through 2002, the mortality rate in the most rural of counties was about double that of the state. Tables other than transportation are not presented due to the small number of events in both age ranges.

The cause of death data are obtained from death certificates filed at the Iowa Department of Public Health. Analysis was done by the State Health Registry of Iowa at the University of Iowa. Age-adjusted rates were calculated using the Year 2000 U.S. population distribution. Note that the crude and age-adjusted rates displayed in the graphs for

ages 15-19 are identical to one another. This is because only one age group in the age-adjustment analysis is represented. The crude and age-adjusted rates for the 0-14 age group show slight differences as this represents four age groups (<1, 1-4, 5-9, and 10-14) in the age-adjustment analysis.

HIGHLIGHTS...

- ✓ Unintentional injuries, homicides, and suicides are important public health problems in those 15-24 years of age.
- ✓ Injuries contribute the most to years of life lost (YLL).
- ✓ Motor vehicle deaths accounted for 97% of all transportation deaths in youth aged 15-19 in Iowa.

Age 0-14: All Transportation Mortality 1993-2002

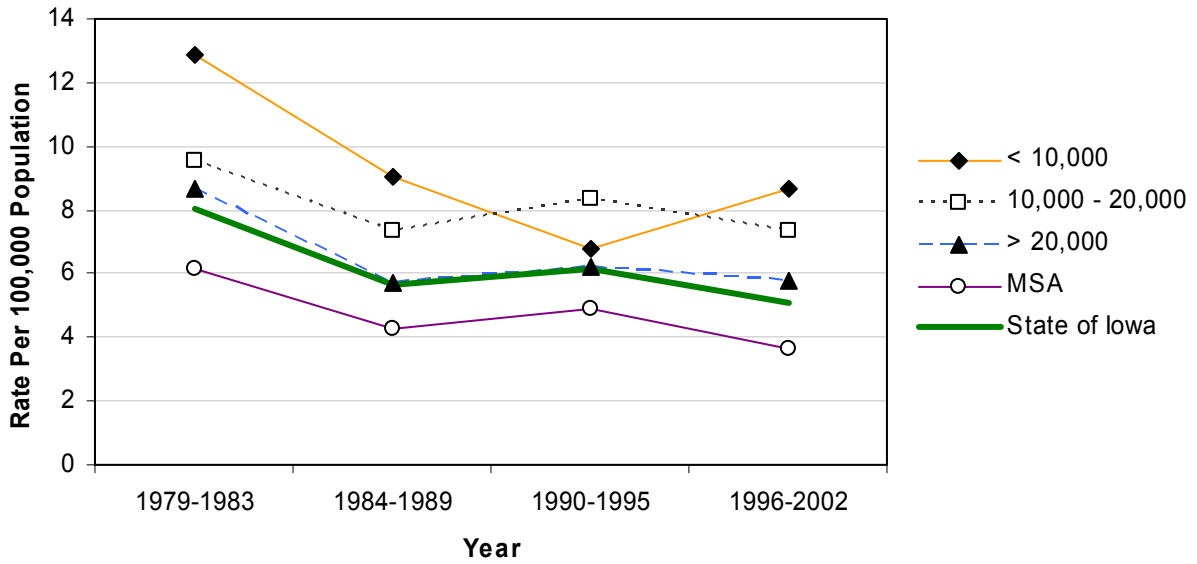
	County	#	Crude ¹	Adjusted ^{1,2}	County	#	Crude ¹	Adjusted ^{1,2}	
Counties with 2004 Population < 10,000	Adair	*	*	*	Monona	*	*	*	
	Adams	*	*	*	Monroe	*	*	*	
	Audubon	*	*	*	Osceola	*	*	*	
	Clarke	*	*	*	Palo Alto	*	*	*	
	Davis	*	*	*	Pocahontas	*	*	*	
	Decatur	*	*	*	Ringgold	*	*	*	
	Fremont	*	*	*	Taylor	*	*	*	
	Howard	*	*	*	Van Buren	*	*	*	
	Ida	*	*	*	Wayne	*	*	*	
	Lucas	*	*	*	Worth	*	*	*	
					Total	27	8.5	8.3	
	Counties with 2004 Population 10,000 – 20,000	Allamakee	*	*	*	Hardin	*	*	*
		Appanoose	*	*	*	Humboldt	*	*	*
Butler		*	*	*	Iowa	*	*	*	
Calhoun		*	*	*	Jefferson	*	*	*	
Cass		*	*	*	Keokuk	5	21.0	22.0	
Cedar		*	*	*	Kossuth	*	*	*	
Cherokee		5	18.9	18.7	Louisa	*	*	*	
Chickasaw		*	*	*	Lyon	*	*	*	
Clay		*	*	*	Mitchell	*	*	*	
Clayton		*	*	*	Montgomery	*	*	*	
Crawford		7	19.9	20.5	O'Brien	*	*	*	
Delaware		*	*	*	Page	*	*	*	
Dickinson		*	*	*	Poweshiek	*	*	*	
Emmet		*	*	*	Sac	5	21.4	19.4	
Floyd		*	*	*	Shelby	*	*	*	
Franklin		*	*	*	Tama	*	*	*	
Greene		*	*	*	Union	*	*	*	
Hamilton		*	*	*	Winnebago	*	*	*	
Hancock	*	*	*	Wright	*	*	*		
				Total	88	7.9	7.9		
Counties with 2004 Population > 20,000	Boone	11	21.3	21.8	Lee	6	7.8	7.7	
	Buchanan	*	*	*	Mahaska	5	10.8	10.7	
	Buena Vista	*	*	*	Marion	*	*	*	
	Carroll	*	*	*	Marshall	8	10.2	10.2	
	Cerro Gordo	*	*	*	Muscatine	6	6.5	6.5	
	Clinton	*	*	*	Plymouth	*	*	*	
	Des Moines	5	5.8	5.9	Sioux	8	11.3	11.1	
	Fayette	*	*	*	Wapello	9	13.0	13.0	
	Henry	*	*	*	Webster	*	*	*	
	Jackson	*	*	*	Winneshiek	*	*	*	
	Jasper	5	6.8	6.7	Total	92	6.8	6.8	
	MSA Counties	Benton	*	*	*	Linn	17	4.3	4.4
Black Hawk		16	6.5	6.5	Madison	*	*	*	
Bremer		*	*	*	Mills	*	*	*	
Dallas		5	5.8	5.7	Polk	31	4.0	4.0	
Dubuque		5	2.7	2.6	Pottawattamie	7	3.8	3.8	
Grundy		*	*	*	Scott	12	3.5	3.5	
Guthrie		*	*	*	Story	*	*	*	
Harrison		*	*	*	Warren	*	*	*	
Johnson		6	3.3	3.3	Washington	*	*	*	
Jones		*	*	*	Woodbury	12	5.1	5.1	
					Total	133	4.2	4.2	
State Total		340	5.7	5.7					

¹Rates per 100,000 population
²Adjusted to year 2000 population

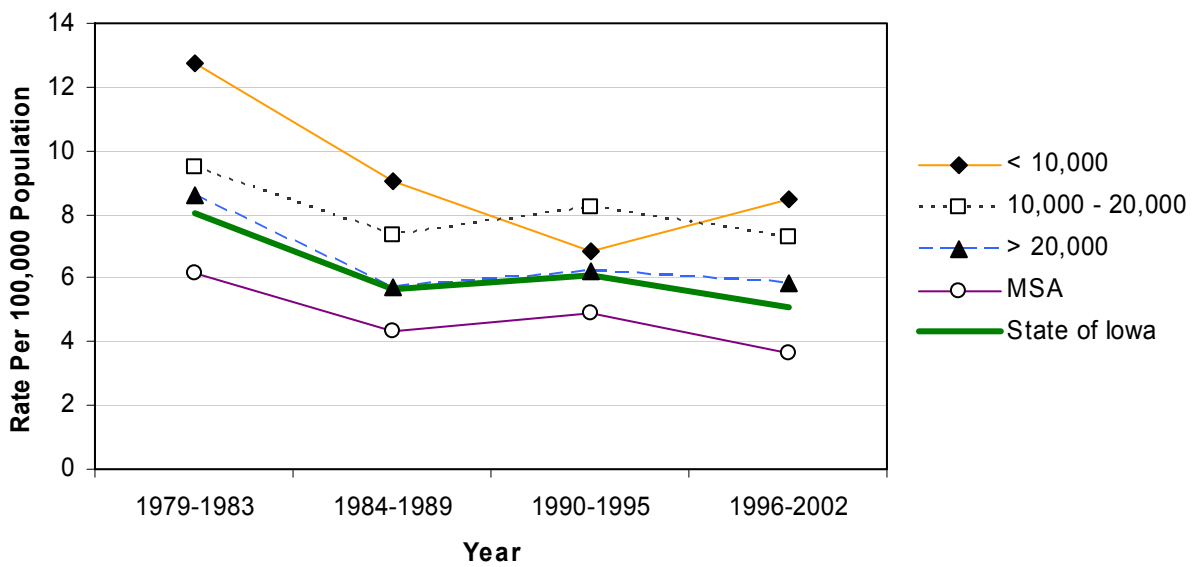
Source: Iowa Department of Public Health via Iowa Cancer Registry

Age 0-14: All Transportation Mortality by County Group 1979-2002

Crude Rates



Age-Adjusted Rates



Age 15-19: All Transportation Mortality 1993-2002

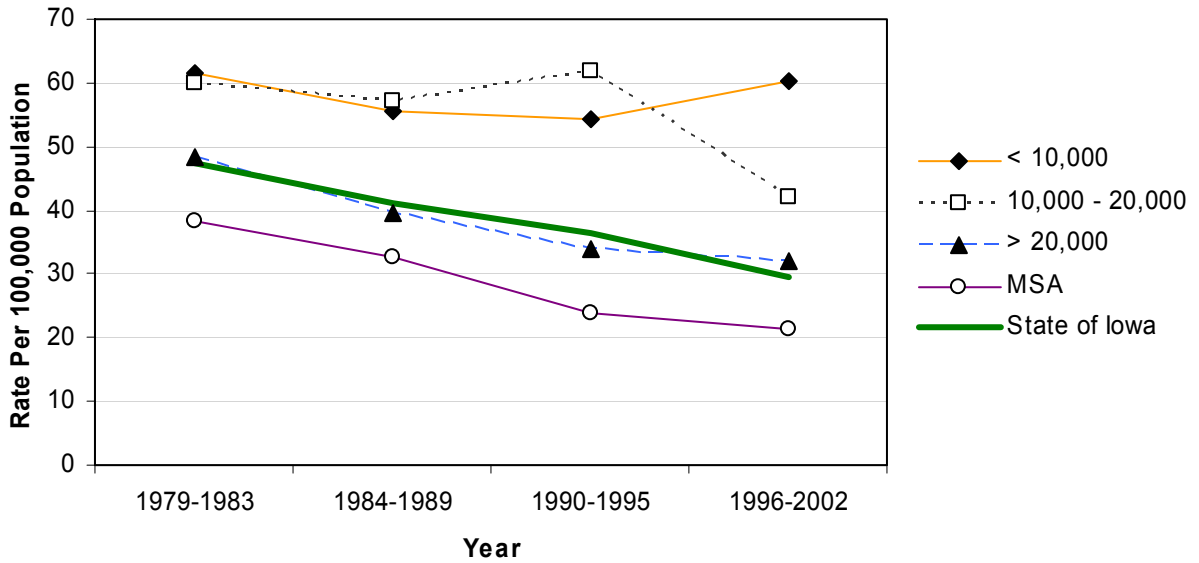
	County	#	Crude ¹	Adjusted ^{1,2}	County	#	Crude ¹	Adjusted ^{1,2}
Counties with 2004 Population < 10,000	Adair	*	*	*	Monona	*	*	*
	Adams	*	*	*	Monroe	*	*	*
	Audubon	*	*	*	Osceola	*	*	*
	Clarke	*	*	*	Palo Alto	*	*	*
	Davis	5	79.5	79.5	Pocahontas	*	*	*
	Decatur	6	69.3	69.3	Ringgold	*	*	*
	Fremont	6	107.0	107.0	Taylor	*	*	*
	Howard	*	*	*	Van Buren	*	*	*
	Ida	7	119.1	119.1	Wayne	11	241.0	241.0
	Lucas	*	*	*	Worth	*	*	*
					Total	72	62.1	62.1
	Counties with 2004 Population 10,000 – 20,000	Allamakee	8	77.8	77.8	Hardin	*	*
Appanoose		6	63.4	63.4	Humboldt	*	*	*
Butler		8	73.0	73.0	Iowa	*	*	*
Calhoun		*	*	*	Jefferson	6	50.6	50.6
Cass		9	87.2	87.2	Keokuk	9	108.1	108.1
Cedar		6	46.6	46.6	Kossuth	13	96.4	96.4
Cherokee		*	*	*	Louisa	8	91.9	91.9
Chickasaw		*	*	*	Lyon	5	55.8	55.8
Clay		*	*	*	Mitchell	6	76.5	76.5
Clayton		18	130.1	130.1	Montgomery	5	61.2	61.2
Crawford		*	*	*	O'Brien	6	51.6	51.6
Delaware		17	114.8	114.8	Page	*	*	*
Dickinson		*	*	*	Poweshiek	6	36.1	36.1
Emmet		*	*	*	Sac	5	61.4	61.4
Floyd		*	*	*	Shelby	*	*	*
Franklin		*	*	*	Tama	*	*	*
Greene		*	*	*	Union	*	*	*
Hamilton		*	*	*	Winnebago	*	*	*
Hancock	6	64.8	64.8	Wright	*	*	*	
				Total	201	49.4	49.4	
Counties with 2004 Population > 20,000	Boone	7	38.9	38.9	Lee	6	22.8	22.8
	Buchanan	7	41.5	41.5	Mahaska	*	*	*
	Buena Vista	*	*	*	Marion	9	35.4	35.4
	Carroll	8	48.2	48.2	Marshall	8	28.7	28.7
	Cerro Gordo	12	35.3	35.3	Muscatine	5	16.5	16.5
	Clinton	13	35.4	35.4	Plymouth	7	34.7	34.7
	Des Moines	9	29.7	29.7	Sioux	18	54.9	54.9
	Fayette	*	*	*	Wapello	7	27.0	27.0
	Henry	6	40.2	40.2	Webster	*	*	*
	Jackson	10	67.1	67.1	Winneshiek	5	22.7	22.7
	Jasper	9	37.3	37.3	Total	159	31.9	31.9
	MSA Counties	Benton	7	40.5	40.5	Linn	36	27.0
Black Hawk		16	15.1	15.1	Madison	9	89.6	89.6
Bremer		5	23.7	23.7	Mills	5	47.0	47.0
Dallas		8	31.1	31.1	Polk	61	25.2	25.2
Dubuque		14	19.9	19.9	Pottawattamie	11	17.3	17.3
Grundy		*	*	*	Scott	28	24.4	24.4
Guthrie		*	*	*	Story	6	7.0	7.0
Harrison		6	54.5	54.5	Warren	6	18.4	18.4
Johnson		15	14.8	14.8	Washington	*	*	*
Jones		10	72.1	72.1	Woodbury	16	20.6	20.6
					Total	264	22.6	22.6
State Total		696	31.8	31.8				

¹Rates per 100,000 population
²Adjusted to year 2000 population

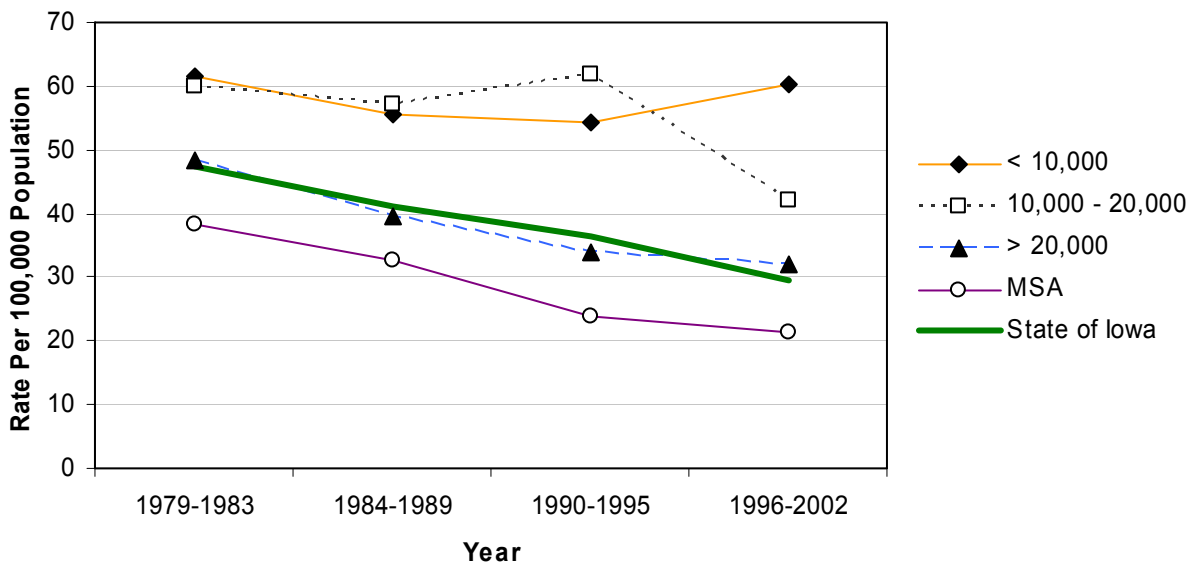
Source: Iowa Department of Public Health via Iowa Cancer Registry

Age 15-19: All Transportation Mortality by County Group 1979-2002

Crude Rates



Age-Adjusted Rates



Age 0-14: Motor Vehicle Traffic Mortality 1993-2002

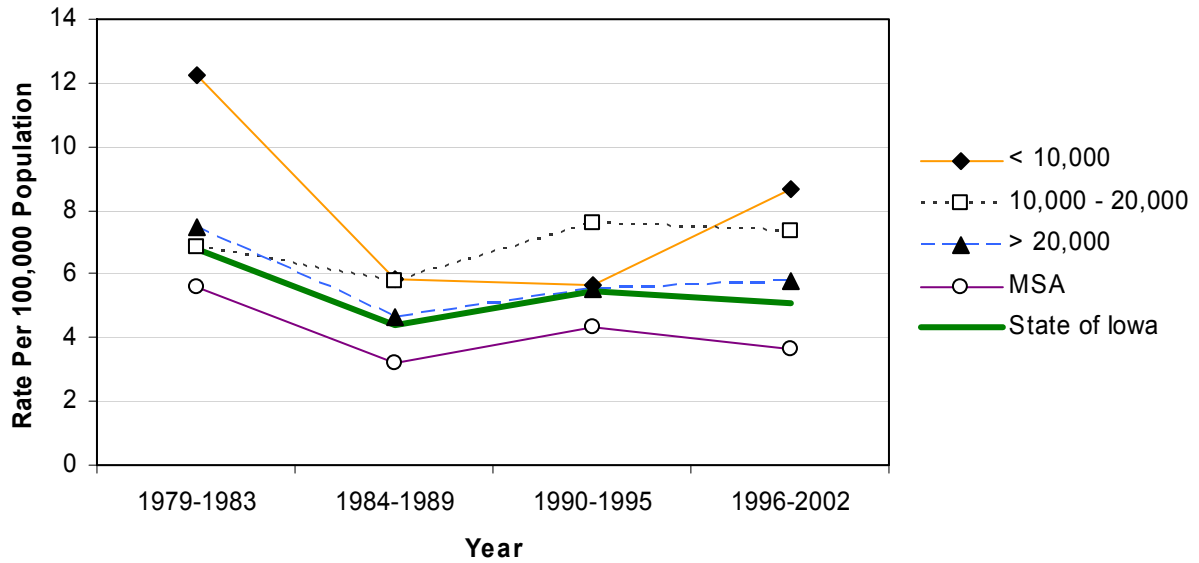
	County	#	Crude ¹	Adjusted ^{1,2}	County	#	Crude ¹	Adjusted ^{1,2}	
Counties with 2004 Population < 10,000	Adair	*	*	*	Monona	*	*	*	
	Adams	*	*	*	Monroe	*	*	*	
	Audubon	*	*	*	Osceola	*	*	*	
	Clarke	*	*	*	Palo Alto	*	*	*	
	Davis	*	*	*	Pocahontas	*	*	*	
	Decatur	*	*	*	Ringgold	*	*	*	
	Fremont	*	*	*	Taylor	*	*	*	
	Howard	*	*	*	Van Buren	*	*	*	
	Ida	*	*	*	Wayne	*	*	*	
	Lucas	*	*	*	Worth	*	*	*	
					Total	22	6.9	6.8	
	Counties with 2004 Population 10,000 – 20,000	Allamakee	*	*	*	Hardin	*	*	*
		Appanoose	*	*	*	Humboldt	*	*	*
Butler		*	*	*	Iowa	*	*	*	
Calhoun		*	*	*	Jefferson	*	*	*	
Cass		*	*	*	Keokuk	5	21.0	22.0	
Cedar		*	*	*	Kossuth	*	*	*	
Cherokee		5	18.9	18.7	Louisa	*	*	*	
Chickasaw		*	*	*	Lyon	*	*	*	
Clay		*	*	*	Mitchell	*	*	*	
Clayton		*	*	*	Montgomery	*	*	*	
Crawford		7	19.9	20.5	O'Brien	*	*	*	
Delaware		*	*	*	Page	*	*	*	
Dickinson		*	*	*	Poweshiek	*	*	*	
Emmet		*	*	*	Sac	5	21.4	19.4	
Floyd		*	*	*	Shelby	*	*	*	
Franklin		*	*	*	Tama	*	*	*	
Greene		*	*	*	Union	*	*	*	
Hamilton		*	*	*	Winnebago	*	*	*	
Hancock	*	*	*	Wright	*	*	*		
				Total	82	7.4	7.4		
Counties with 2004 Population > 20,000	Boone	11	21.3	21.8	Lee	6	7.8	7.7	
	Buchanan	*	*	*	Mahaska	5	10.8	10.7	
	Buena Vista	*	*	*	Marion	*	*	*	
	Carroll	*	*	*	Marshall	7	8.9	8.8	
	Cerro Gordo	*	*	*	Muscatine	5	5.4	5.4	
	Clinton	*	*	*	Plymouth	*	*	*	
	Des Moines	*	*	*	Sioux	7	9.9	9.6	
	Fayette	*	*	*	Wapello	9	13.0	13.0	
	Henry	*	*	*	Webster	*	*	*	
	Jackson	*	*	*	Winneshiek	*	*	*	
	Jasper	*	*	*	Total	85	6.3	6.3	
	MSA Counties	Benton	*	*	*	Linn	15	3.8	3.8
Black Hawk		15	6.1	6.1	Madison	*	*	*	
Bremer		*	*	*	Mills	*	*	*	
Dallas		*	*	*	Polk	28	3.6	3.6	
Dubuque		*	*	*	Pottawattamie	*	*	*	
Grundy		*	*	*	Scott	11	3.2	3.2	
Guthrie		*	*	*	Story	*	*	*	
Harrison		*	*	*	Warren	*	*	*	
Johnson		6	3.3	3.3	Washington	*	*	*	
Jones		*	*	*	Woodbury	12	5.1	5.1	
					Total	118	3.7	3.7	
State Total	307	5.2	5.2						

¹Rates per 100,000 population
²Adjusted to year 2000 population

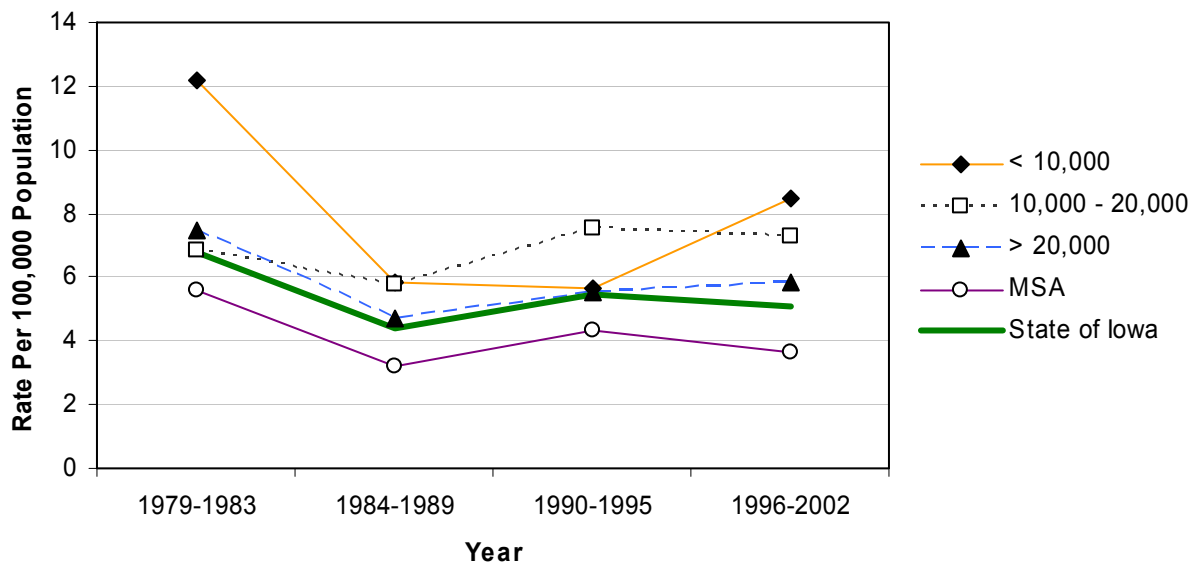
Source: Iowa Department of Public Health via Iowa Cancer Registry

Age 0-14: Motor Vehicle Traffic Mortality by County Group 1979-2002

Crude Rates



Age-Adjusted Rates



Age 15-19: Motor Vehicle Traffic Mortality 1993-2002

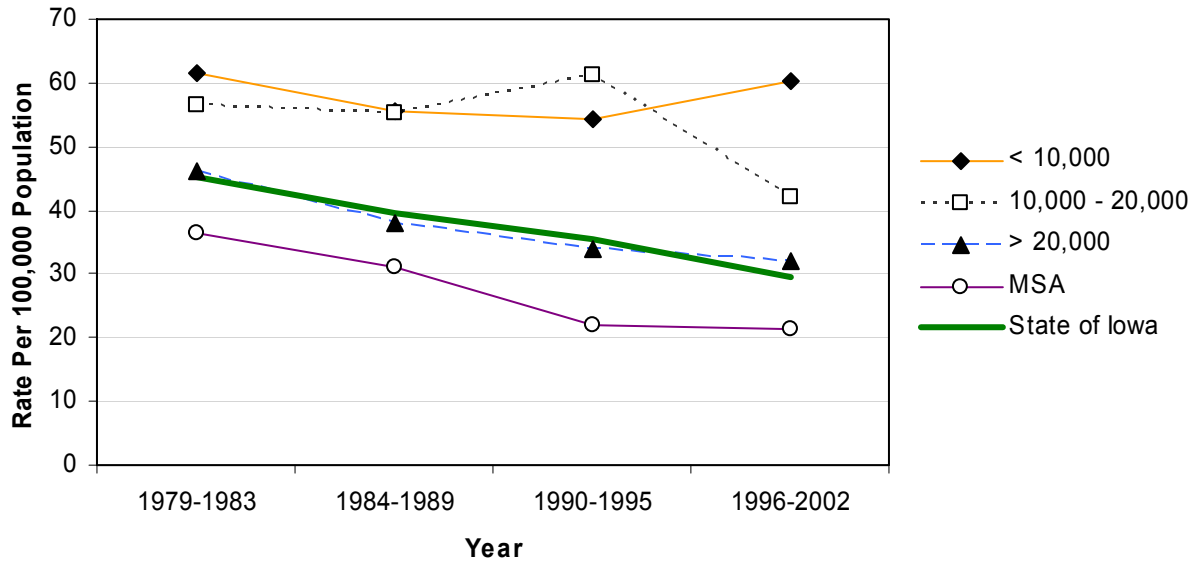
	County	#	Crude ¹	Adjusted ^{1,2}	County	#	Crude ¹	Adjusted ^{1,2}	
Counties with 2004 Population < 10,000	Adair	*	*	*	Monona	*	*	*	
	Adams	*	*	*	Monroe	*	*	*	
	Audubon	*	*	*	Osceola	*	*	*	
	Clarke	*	*	*	Palo Alto	*	*	*	
	Davis	5	79.5	79.5	Pocahontas	*	*	*	
	Decatur	6	69.3	69.3	Ringgold	*	*	*	
	Fremont	6	107.0	107.0	Taylor	*	*	*	
	Howard	*	*	*	Van Buren	*	*	*	
	Ida	7	119.1	119.1	Wayne	11	241.0	241.0	
	Lucas	*	*	*	Worth	*	*	*	
					Total	70	60.3	60.3	
	Counties with 2004 Population 10,000 – 20,000	Allamakee	8	77.8	77.8	Hardin	*	*	*
		Appanoose	6	63.4	63.4	Humboldt	*	*	*
Butler		8	73.0	73.0	Iowa	*	*	*	
Calhoun		*	*	*	Jefferson	6	50.6	50.6	
Cass		9	87.2	87.2	Keokuk	9	108.1	108.1	
Cedar		6	46.6	46.6	Kossuth	13	96.4	96.4	
Cherokee		*	*	*	Louisa	8	91.9	91.9	
Chickasaw		*	*	*	Lyon	*	*	*	
Clay		*	*	*	Mitchell	6	76.5	76.5	
Clayton		18	130.1	130.1	Montgomery	5	61.2	61.2	
Crawford		*	*	*	O'Brien	6	51.6	51.6	
Delaware		17	114.8	114.8	Page	*	*	*	
Dickinson		*	*	*	Poweshiek	6	36.1	36.1	
Emmet		*	*	*	Sac	5	61.4	61.4	
Floyd		*	*	*	Shelby	*	*	*	
Franklin		*	*	*	Tama	*	*	*	
Greene		*	*	*	Union	*	*	*	
Hamilton		*	*	*	Winnebago	*	*	*	
Hancock	6	64.8	64.8	Wright	*	*	*		
				Total	196	48.2	48.2		
Counties with 2004 Population > 20,000	Boone	7	38.9	38.9	Lee	6	22.8	22.8	
	Buchanan	6	35.6	35.6	Mahaska	*	*	*	
	Buena Vista	*	*	*	Marion	9	35.4	35.4	
	Carroll	8	48.2	48.2	Marshall	8	28.7	28.7	
	Cerro Gordo	12	35.3	35.3	Muscatine	5	16.5	16.5	
	Clinton	12	32.7	32.7	Plymouth	7	34.7	34.7	
	Des Moines	9	29.7	29.7	Sioux	18	54.9	54.9	
	Fayette	*	*	*	Wapello	7	27.0	27.0	
	Henry	6	40.2	40.2	Webster	*	*	*	
	Jackson	8	53.7	53.7	Winneshiek	5	22.7	22.7	
	Jasper	9	37.3	37.3	Total	155	31.1	31.1	
	MSA Counties	Benton	6	34.7	34.7	Linn	34	25.5	25.5
Black Hawk		16	15.1	15.1	Madison	8	79.7	79.7	
Bremer		5	23.7	23.7	Mills	5	47.0	47.0	
Dallas		8	31.1	31.1	Polk	58	24.0	24.0	
Dubuque		12	17.0	17.0	Pottawattamie	10	15.8	15.8	
Grundy		*	*	*	Scott	28	24.4	24.4	
Guthrie		*	*	*	Story	6	7.0	7.0	
Harrison		5	45.4	45.4	Warren	6	18.4	18.4	
Johnson		14	13.8	13.8	Washington	*	*	*	
Jones		9	64.9	64.9	Woodbury	16	20.6	20.6	
					Total	251	21.5	21.5	
State Total		672	30.7	30.7					

¹Rates per 100,000 population
²Adjusted to year 2000 population

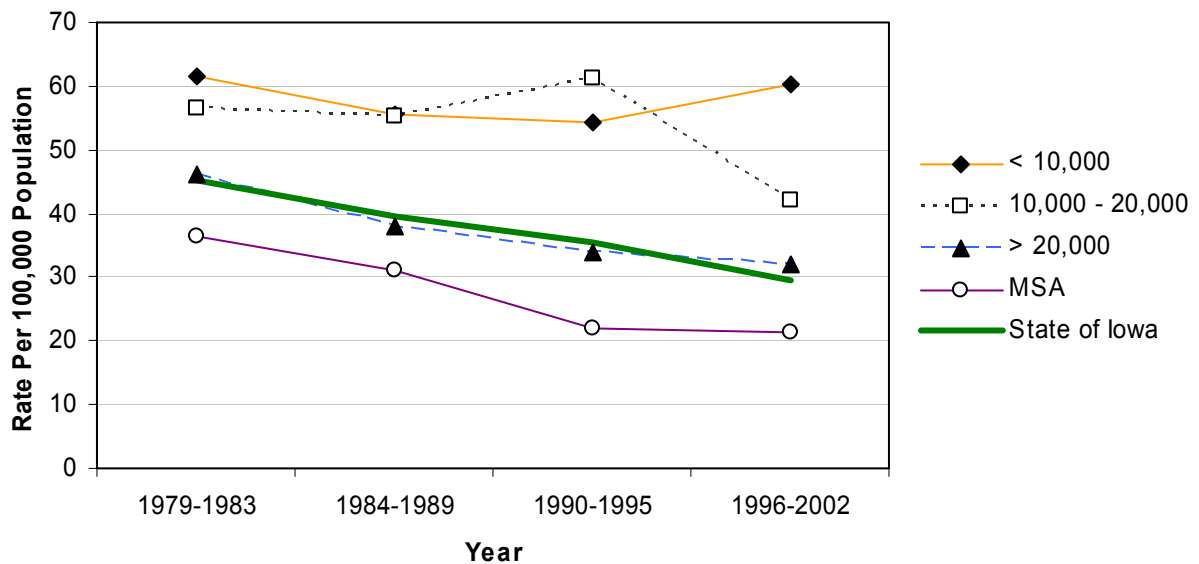
Source: Iowa Department of Public Health via Iowa Cancer Registry

Age 15-19: Motor Vehicle Traffic Mortality by County Group 1979-2002

Crude Rates

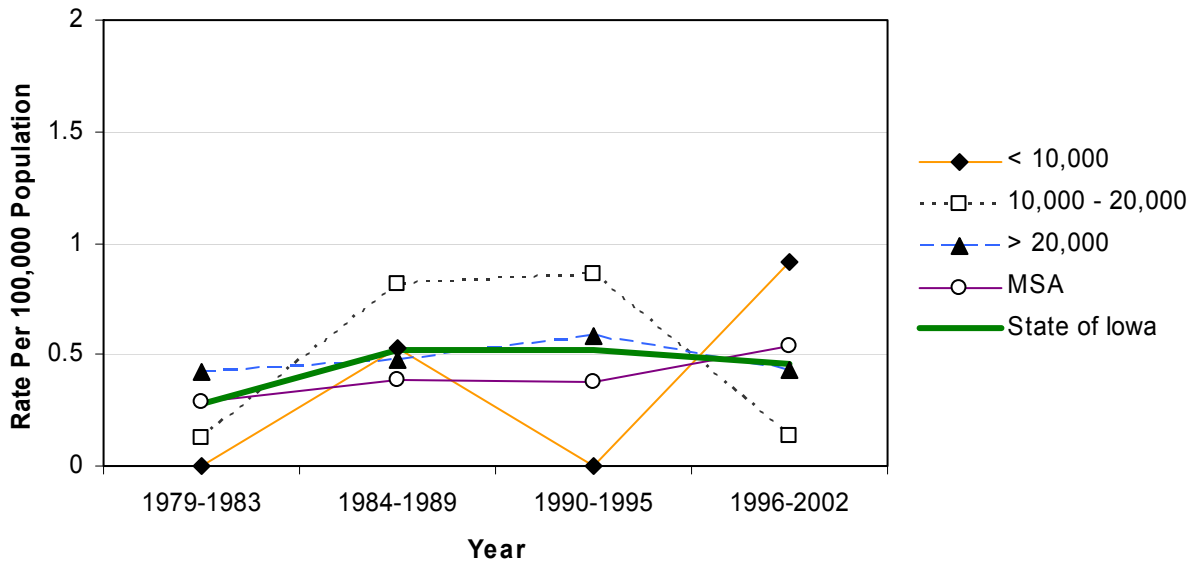


Age-Adjusted Rates

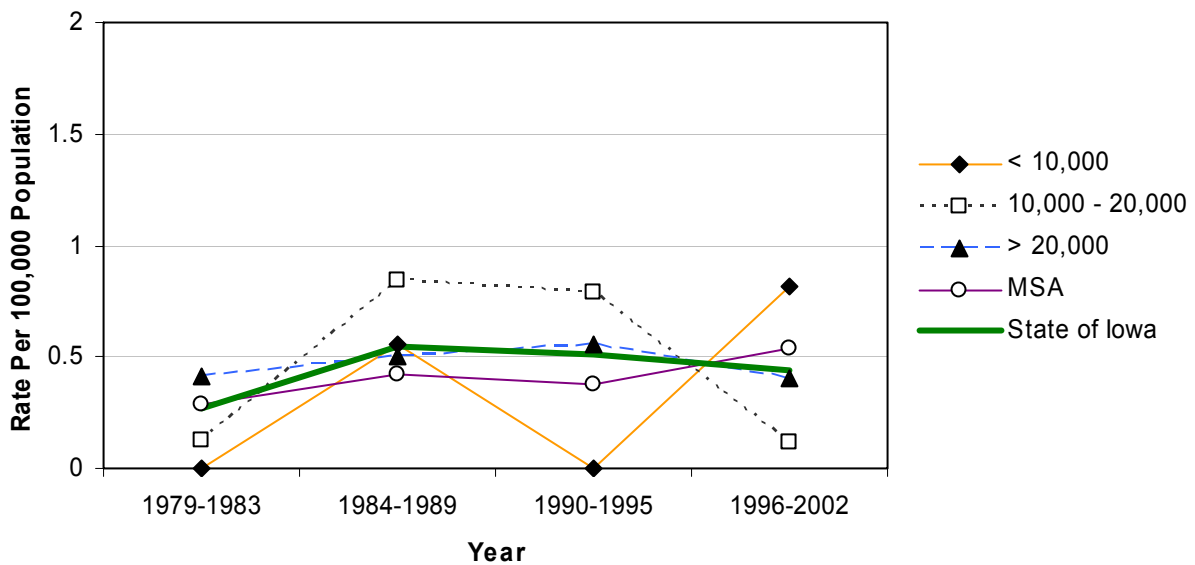


Age 0-14: Suicides by County Group 1979-2002

Crude Rates

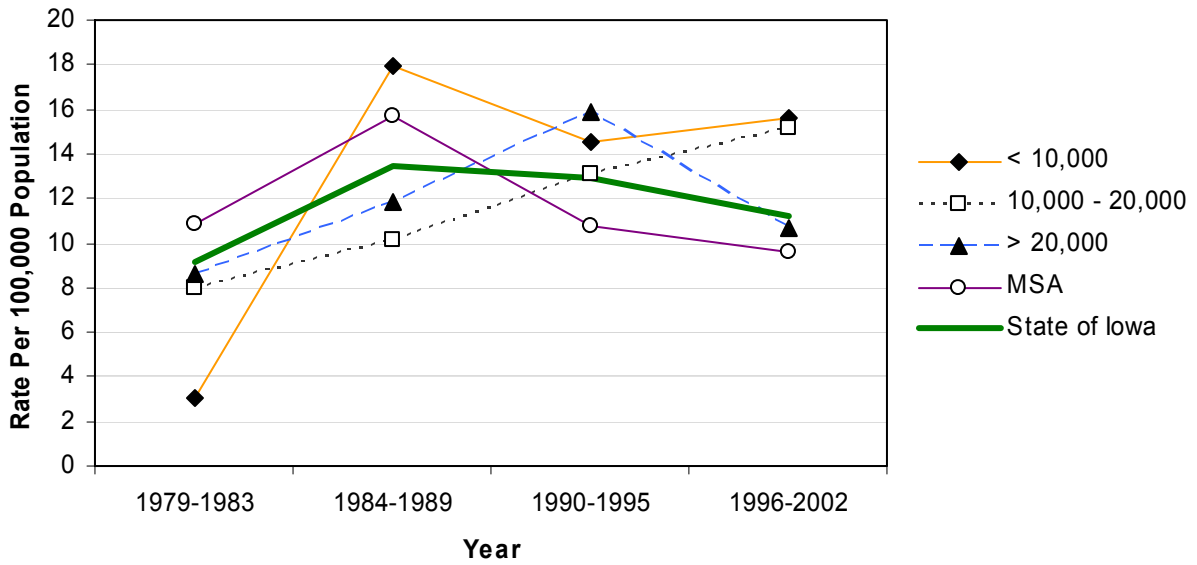


Age-Adjusted Rates

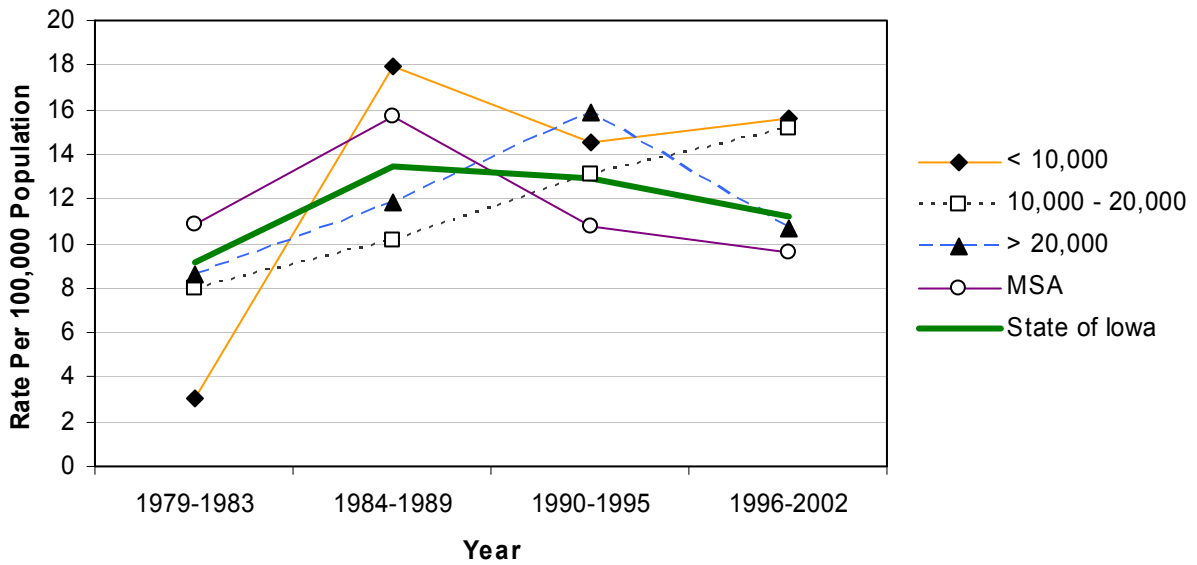


Age 15-19: Suicides by County Group 1979-2002

Crude Rates

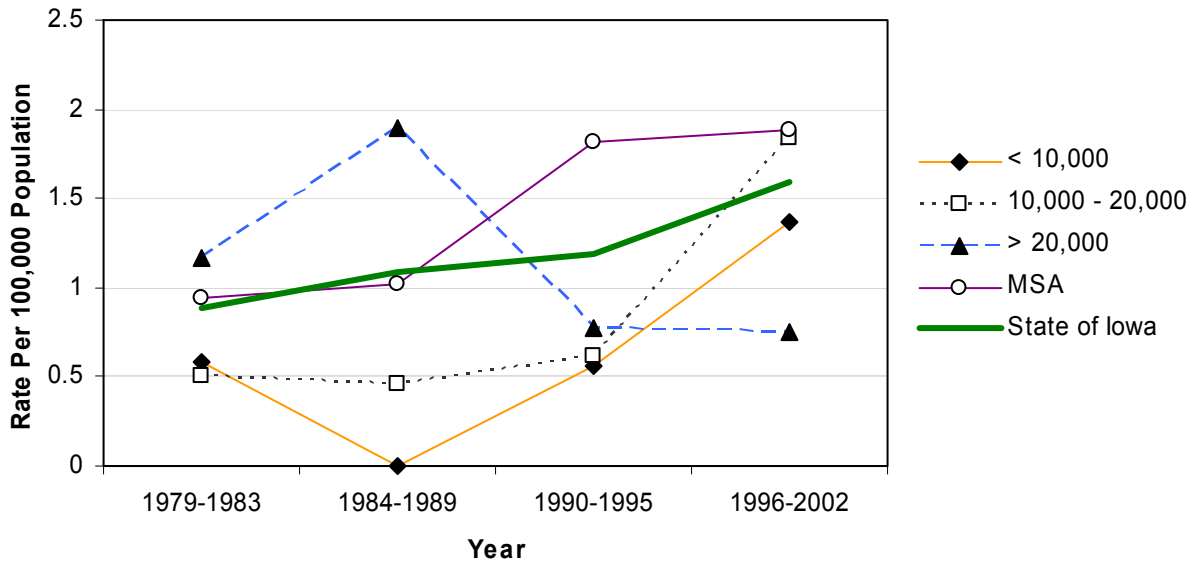


Age-Adjusted Rates

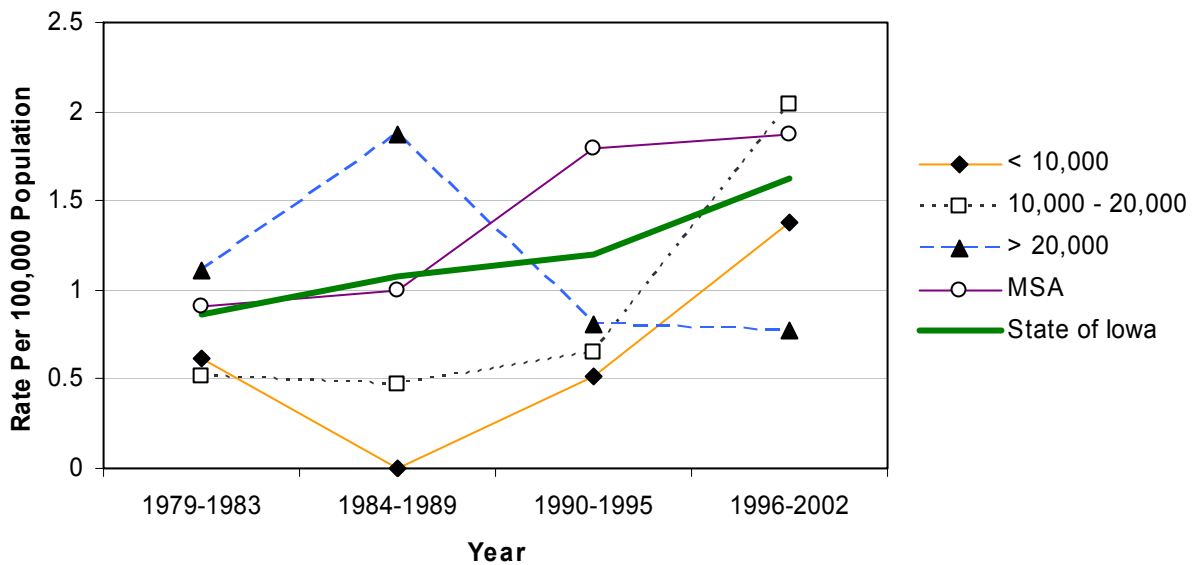


Age 0-14: Homicides by County Group 1979-2002

Crude Rates

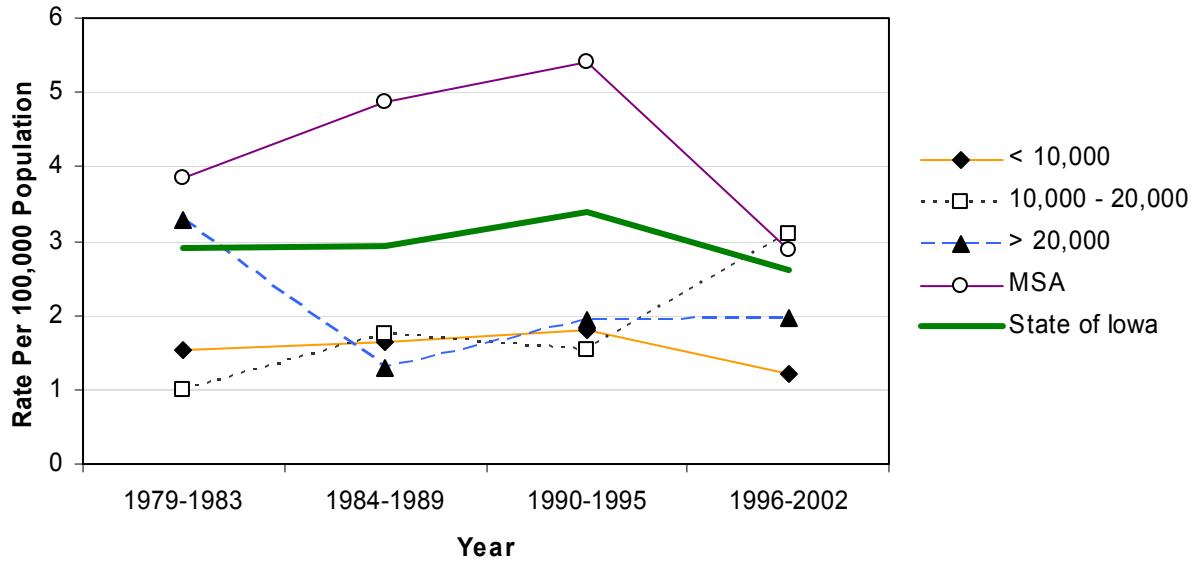


Age-Adjusted Rates



Age 15-19: Homicides by County Group 1979-2002

Crude Rates



Age-Adjusted Rates

