

Youth Injury Mortality

Injuries remain the leading cause of death in persons age 1-34 years and contribute the most to years of life lost (YLL), particularly for those events of pre-adult ages. Deaths from unintentional injuries, homicides, and suicides are important public health problems in those 15-24 years of age and many of these deaths are preventable.

Transportation fatalities accounted for 277 deaths for youth aged 0-14 from 1996-2004. Of these, 87% were due to motor vehicle traffic death. In the 15-19 age range, 570 transportation deaths occurred over this same period with 96% accounted for by motor vehicle traffic deaths. In general, transportation mortality rates are higher in the more rural counties for both age groups. For 15-19 year-olds during 1996 through 2004, the mortality rate in the most rural of counties was double that of the state. Tables other than transportation are not presented due to the small number of events in both age ranges.

HIGHLIGHTS...

- ✓ Unintentional injuries, homicides, and suicides are important public health problems in those 15-24 years of age.
- ✓ Injuries contribute the most to years of life lost (YLL).
- ✓ Motor vehicle deaths accounted for 96% of all transportation deaths in youth aged 15-19 in Iowa.

The cause of death data are obtained from death certificates filed at the Iowa Department of Public Health. Analysis was done by the State Health Registry of Iowa at the University of Iowa. Crude and age-adjusted rates for ages 15-19 are identical to one another because only one age group in the age-adjustment analysis is represented. The crude and age-adjusted rates for the 0-14 age group show only slight differences as this represents four age groups (< 1, 1-4, 5-9, and 10-14) in the age-adjustment analysis. We therefore display only crude rates in the tables and graphs.

Age 0-14: All Transportation Mortality 1996-2004

	County	#	Crude ¹	County	#	Crude ¹	
Counties with Average Population < 10,000	Adair	*	*	Monona	*	*	
	Adams	*	*	Monroe	*	*	
	Audubon	*	*	Osceola	*	*	
	Clarke	*	*	Palo Alto	*	*	
	Davis	*	*	Pocahontas	*	*	
	Decatur	*	*	Ringgold	*	*	
	Fremont	*	*	Taylor	*	*	
	Howard	*	*	Van Buren	*	*	
	Ida	*	*	Wayne	*	*	
	Lucas	*	*	Worth	*	*	
				Total	22	8.0	
	Counties with Average Population 10,000 – 20,000	Allamakee	*	*	Hardin	*	*
		Appanoose	*	*	Humboldt	*	*
Butler		*	*	Iowa	*	*	
Calhoun		*	*	Jefferson	*	*	
Cass		*	*	Keokuk	*	*	
Cedar		*	*	Kossuth	*	*	
Cherokee		6	27.3	Louisa	*	*	
Chickasaw		*	*	Lyon	*	*	
Clay		*	*	Mitchell	*	*	
Clayton		*	*	Montgomery	*	*	
Crawford		5	16.1	O'Brien	*	*	
Delaware		*	*	Page	*	*	
Dickinson		*	*	Poweshiek	*	*	
Emmet		*	*	Sac	*	*	
Floyd		*	*	Shelby	*	*	
Franklin		*	*	Tama	*	*	
Greene		*	*	Union	*	*	
Hamilton		*	*	Winnebago	*	*	
Hancock		*	*	Wright	*	*	
			Total	73	7.6		
Counties with Average Population > 20,000	Boone	8	17.5	Lee	*	*	
	Buchanan	*	*	Mahaska	7	17.2	
	Buena Vista	*	*	Marion	*	*	
	Carroll	*	*	Marshall	5	7.1	
	Cerro Gordo	*	*	Muscatine	*	*	
	Clinton	5	5.4	Plymouth	*	*	
	Des Moines	*	*	Sioux	7	11.4	
	Fayette	*	*	Wapello	10	16.3	
	Henry	*	*	Webster	*	*	
	Jackson	*	*	Winneshiek	*	*	
	Jasper	5	7.6	Total	72	6.1	
	MSA Counties	Benton	*	*	Linn	16	4.5
		Black Hawk	10	4.7	Madison	*	*
Bremer		*	*	Mills	*	*	
Dallas		5	6.0	Polk	22	3.1	
Dubuque		*	*	Pottawattamie	5	3.0	
Grundy		*	*	Scott	9	2.9	
Guthrie		*	*	Story	*	*	
Harrison		*	*	Warren	*	*	
Johnson		*	*	Washington	*	*	
Jones		*	*	Woodbury	15	7.1	
			Total	110	3.9		
State Total	277	5.3					

¹Rates per 100,000 Population

Source: State Health Registry of Iowa

Age 15-19: All Transportation Mortality 1996-2004

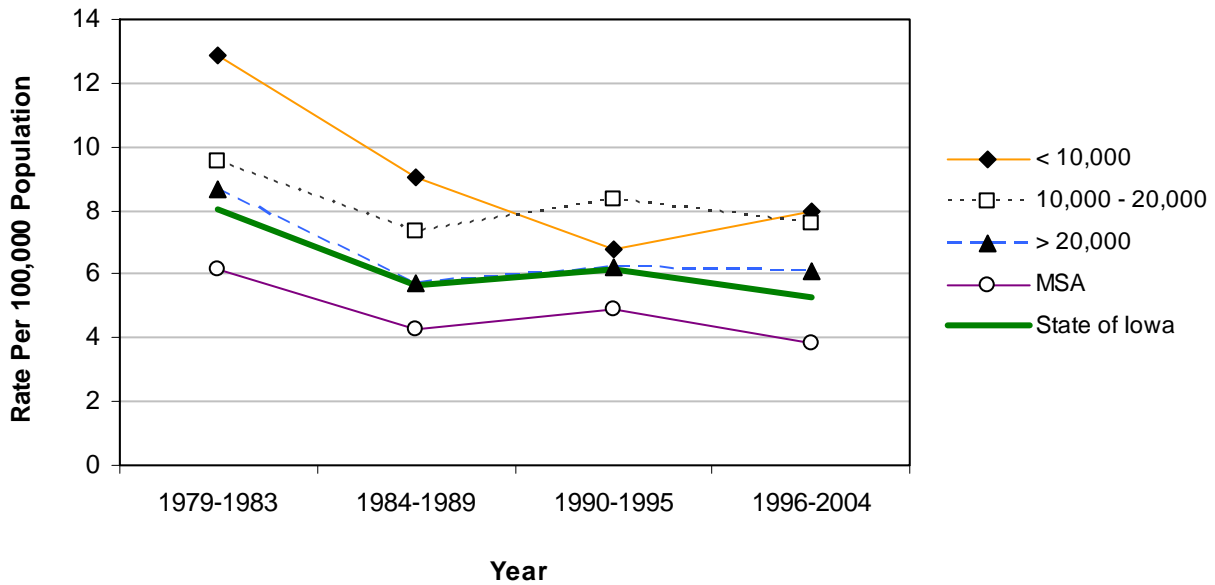
	County	#	Crude ¹	County	#	Crude ¹	
Counties with Average Population < 10,000	Adair	5	96.0	Monona	*	*	
	Adams	*	*	Monroe	*	*	
	Audubon	*	*	Osceola	*	*	
	Clarke	*	*	Palo Alto	*	*	
	Davis	*	*	Pocahontas	*	*	
	Decatur	5	64.4	Ringgold	*	*	
	Fremont	5	98.4	Taylor	*	*	
	Howard	6	93.2	Van Buren	*	*	
	Ida	*	*	Wayne	8	189.9	
	Lucas	*	*	Worth	*	*	
				Total	62	58.8	
	Counties with Average Population 10,000 – 20,000	Allamakee	7	74.8	Hardin	*	*
		Appanoose	*	*	Humboldt	*	*
Butler		5	51.2	Iowa	*	*	
Calhoun		*	*	Jefferson	5	46.5	
Cass		5	55.1	Keokuk	5	67.5	
Cedar		*	*	Kossuth	7	57.8	
Cherokee		*	*	Louisa	6	76.0	
Chickasaw		*	*	Lyon	*	*	
Clay		*	*	Mitchell	*	*	
Clayton		12	97.9	Montgomery	*	*	
Crawford		*	*	O'Brien	*	*	
Delaware		15	111.3	Page	*	*	
Dickinson		*	*	Poweshiek	6	40.5	
Emmet		*	*	Sac	*	*	
Floyd		*	*	Shelby	*	*	
Franklin		*	*	Tama	*	*	
Greene		*	*	Union	*	*	
Hamilton		6	59.2	Winnebago	*	*	
Hancock		7	*	Wright	*	*	
			Total	148	40.4		
Counties with Average Population > 20,000	Boone	8	47.9	Lee	6	25.2	
	Buchanan	8	52.9	Mahaska	*	*	
	Buena Vista	*	*	Marion	7	30.1	
	Carroll	8	52.9	Marshall	6	23.8	
	Cerro Gordo	8	26.4	Muscatine	5	18.6	
	Clinton	11	33.6	Plymouth	*	*	
	Des Moines	6	22.1	Sioux	15	49.7	
	Fayette	*	*	Wapello	5	21.8	
	Henry	5	37.0	Webster	5	17.6	
	Jackson	8	60.0	Winneshiek	*	*	
	Jasper	5	23.0	Total	132	29.3	
MSA Counties	Benton	5	30.8	Linn	31	25.6	
	Black Hawk	13	13.8	Madison	5	53.7	
	Bremer	*	*	Mills	*	*	
	Dallas	7	27.7	Polk	59	26.5	
	Dubuque	6	9.5	Pottawattamie	12	20.7	
	Grundy	*	*	Scott	22	21.2	
	Guthrie	*	*	Story	6	7.7	
	Harrison	5	49.4	Warren	8	26.9	
	Johnson	16	16.9	Washington	5	39.6	
	Jones	8	64.2	Woodbury	13	18.7	
				Total	228	21.4	
State Total	570	28.7					

¹Rates per 100,000 Population

Source: State Health Registry of Iowa

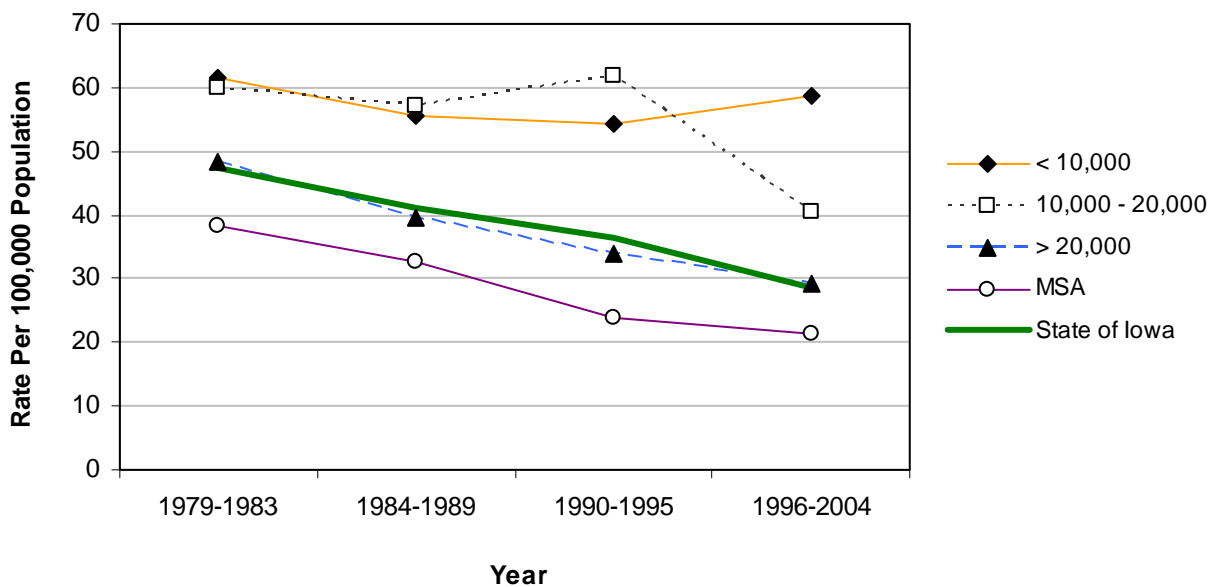
Age 0-14: All Transportation Mortality by County Group 1979-2004

Crude Rates



Age 15-19: All Transportation Mortality by County Group 1979-2004

Crude Rates



Age 0-14: Motor Vehicle Traffic Mortality 1996-2004

	County	#	Crude ¹	County	#	Crude ¹	
Counties with Average Population < 10,000	Adair	*	*	Monona	*	*	
	Adams	*	*	Monroe	*	*	
	Audubon	*	*	Osceola	*	*	
	Clarke	*	*	Palo Alto	*	*	
	Davis	*	*	Pocahontas	*	*	
	Decatur	*	*	Ringgold	*	*	
	Fremont	*	*	Taylor	*	*	
	Howard	*	*	Van Buren	*	*	
	Ida	*	*	Wayne	*	*	
	Lucas	*	*	Worth	*	*	
				Total	18	6.5	
	Counties with Average Population 10,000 – 20,000	Allamakee	*	*	Hardin	*	*
		Appanoose	*	*	Humboldt	*	*
Butler		*	*	Iowa	*	*	
Calhoun		*	*	Jefferson	*	*	
Cass		*	*	Keokuk	*	*	
Cedar		*	*	Kossuth	*	*	
Cherokee		6	27.3	Louisa	*	*	
Chickasaw		*	*	Lyon	*	*	
Clay		*	*	Mitchell	*	*	
Clayton		*	*	Montgomery	*	*	
Crawford		5	16.1	O'Brien	*	*	
Delaware		*	*	Page	*	*	
Dickinson		*	*	Poweshiek	*	*	
Emmet		*	*	Sac	*	*	
Floyd		*	*	Shelby	*	*	
Franklin		*	*	Tama	*	*	
Greene		*	*	Union	*	*	
Hamilton		*	*	Winnebago	*	*	
Hancock		*	*	Wright	*	*	
			Total	66	6.9		
Counties with Average Population > 20,000	Boone	8	17.5	Lee	*	*	
	Buchanan	*	*	Mahaska	7	17.2	
	Buena Vista	*	*	Marion	*	*	
	Carroll	*	*	Marshall	*	*	
	Cerro Gordo	*	*	Muscatine	*	*	
	Clinton	*	*	Plymouth	*	*	
	Des Moines	*	*	Sioux	6	9.8	
	Fayette	*	*	Wapello	8	13.0	
	Henry	*	*	Webster	*	*	
	Jackson	*	*	Winneshiek	*	*	
	Jasper	5	7.6	Total	65	5.5	
	MSA Counties	Benton	*	*	Linn	12	3.4
Black Hawk		9	4.2	Madison	*	*	
Bremer		*	*	Mills	*	*	
Dallas		*	*	Polk	20	2.8	
Dubuque		*	*	Pottawattamie	*	*	
Grundy		*	*	Scott	7	2.3	
Guthrie		*	*	Story	*	*	
Harrison		*	*	Warren	*	*	
Johnson		*	*	Washington	*	*	
Jones		*	*	Woodbury	15	7.1	
			Total	93	3.3		
State Total	242	4.6					

¹Rates per 100,000 Population

Source: State Health Registry of Iowa

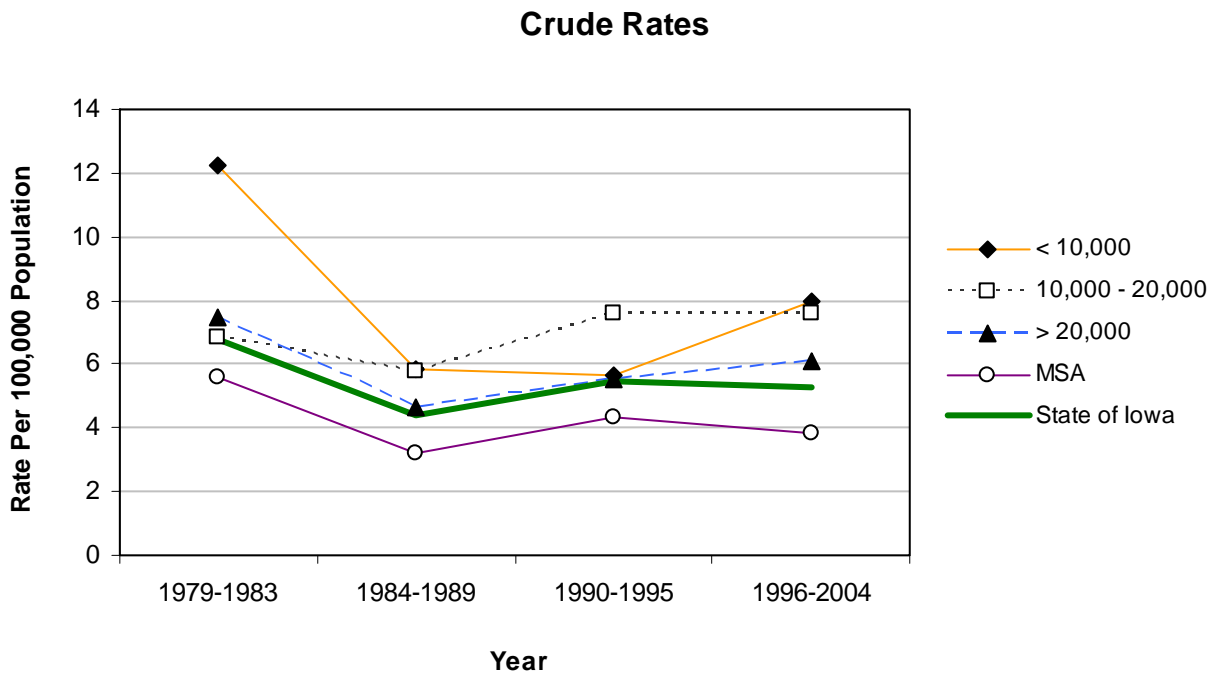
Age 15-19: Motor Vehicle Traffic Mortality 1996-2004

	County	#	Crude ¹	County	#	Crude ¹
Counties with Average Population < 10,000	Adair	5	96.0	Monona	*	*
	Adams	*	*	Monroe	*	*
	Audubon	*	*	Osceola	*	*
	Clarke	*	*	Palo Alto	*	*
	Davis	*	*	Pocahontas	*	*
	Decatur	5	64.4	Ringgold	*	*
	Fremont	5	98.4	Taylor	*	*
	Howard	6	93.2	Van Buren	*	*
	Ida	*	*	Wayne	8	189.9
	Lucas	*	*	Worth	*	*
				Total	60	56.9
	Counties with Average Population 10,000 – 20,000	Allamakee	7	74.8	Hardin	*
Appanoose		*	*	Humboldt	*	*
Butler		5	51.2	Iowa	*	*
Calhoun		*	*	Jefferson	5	46.5
Cass		5	55.1	Keokuk	5	67.5
Cedar		*	*	Kossuth	7	57.8
Cherokee		*	*	Louisa	6	76.0
Chickasaw		*	*	Lyon	*	*
Clay		*	*	Mitchell	*	*
Clayton		12	97.9	Montgomery	*	*
Crawford		*	*	O'Brien	*	*
Delaware		15	111.3	Page	*	*
Dickinson		*	*	Poweshiek	6	40.5
Emmet		*	*	Sac	*	*
Floyd		*	*	Shelby	*	*
Franklin		*	*	Tama	*	*
Greene		*	*	Union	*	*
Hamilton		6	59.2	Winnebago	*	*
Hancock	*	*	Wright	*	*	
			Total	145	39.6	
Counties with Average Population > 20,000	Boone	8	47.9	Lee	6	25.2
	Buchanan	7	46.3	Mahaska	*	*
	Buena Vista	*	*	Marion	7	30.1
	Carroll	8	52.9	Marshall	6	23.8
	Cerro Gordo	8	26.4	Muscatine	5	18.6
	Clinton	10	30.5	Plymouth	*	*
	Des Moines	6	22.1	Sioux	15	49.7
	Fayette	*	*	Wapello	5	21.8
	Henry	5	37.0	Webster	5	17.6
	Jackson	6	45.0	Winneshiek	*	*
Jasper	5	23.0	Total	128	28.4	
MSA Counties	Benton	*	*	Linn	28	23.1
	Black Hawk	13	13.8	Madison	*	*
	Bremer	*	*	Mills	*	*
	Dallas	7	27.7	Polk	58	26.1
	Dubuque	5	7.9	Pottawattamie	11	19.0
	Grundy	*	*	Scott	22	21.2
	Guthrie	*	*	Story	6	7.7
	Harrison	*	*	Warren	8	26.9
	Johnson	15	15.9	Washington	5	39.6
	Jones	7	56.2	Woodbury	13	18.7
			Total	217	20.4	
State Total	550	27.7				

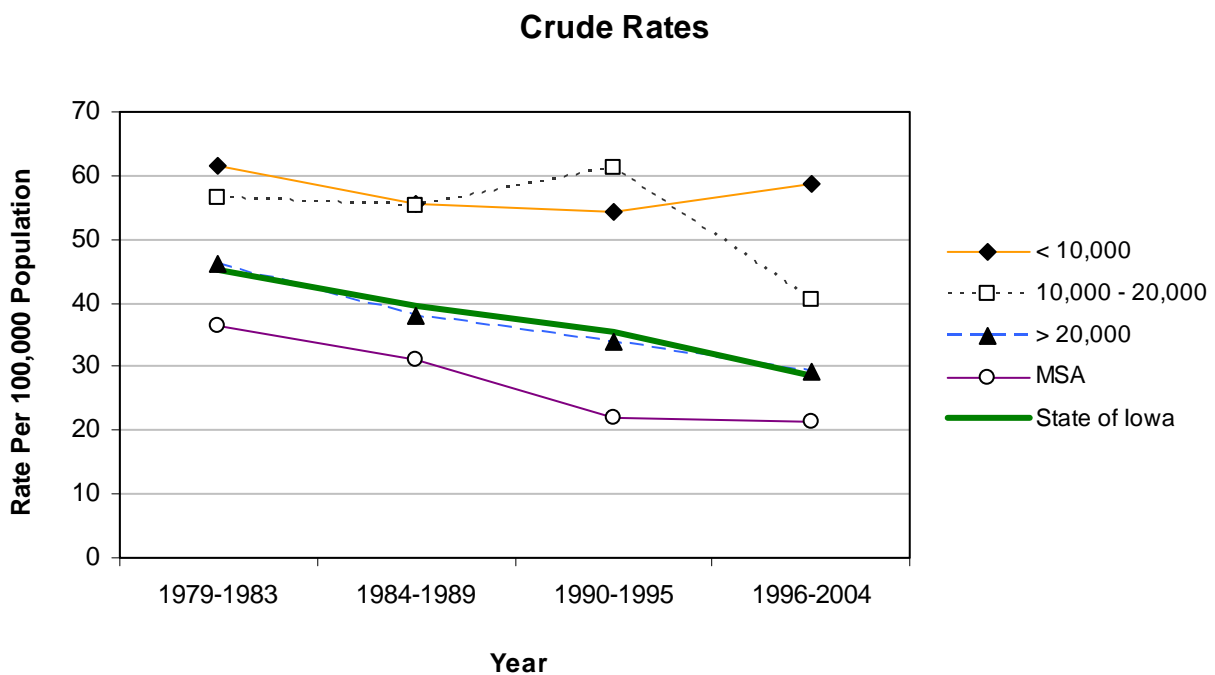
¹Rates per 100,000 Population

Source: State Health Registry of Iowa

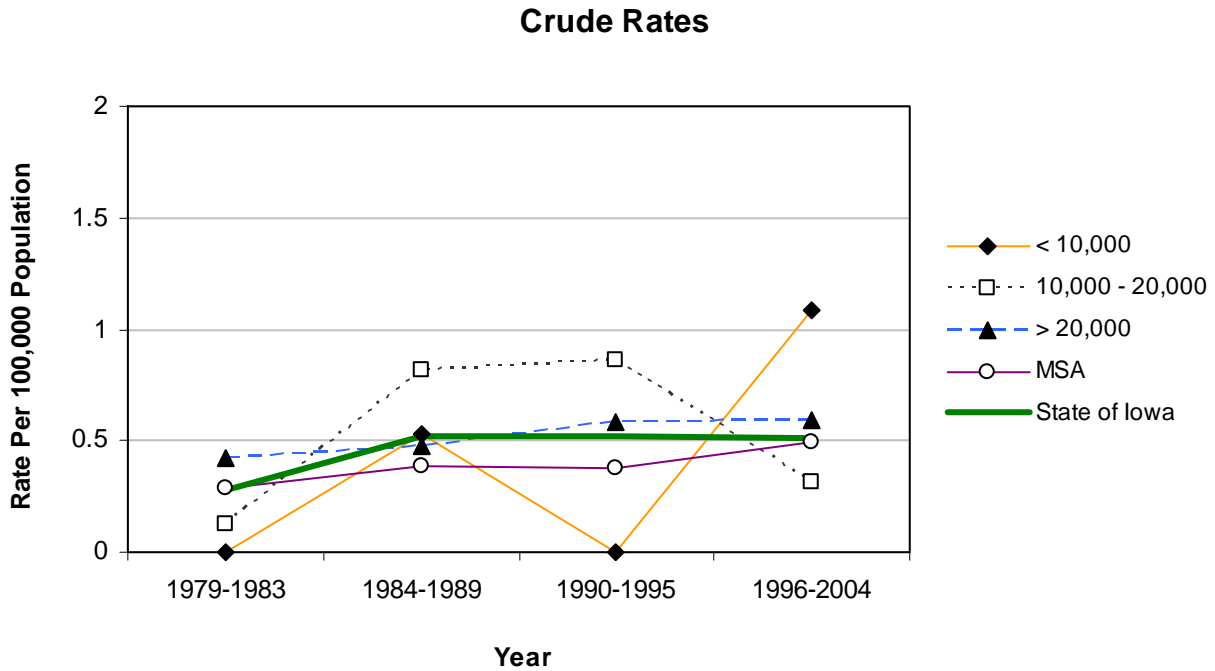
Age 0-14: Motor Vehicle Traffic Mortality by County Group 1979-2004



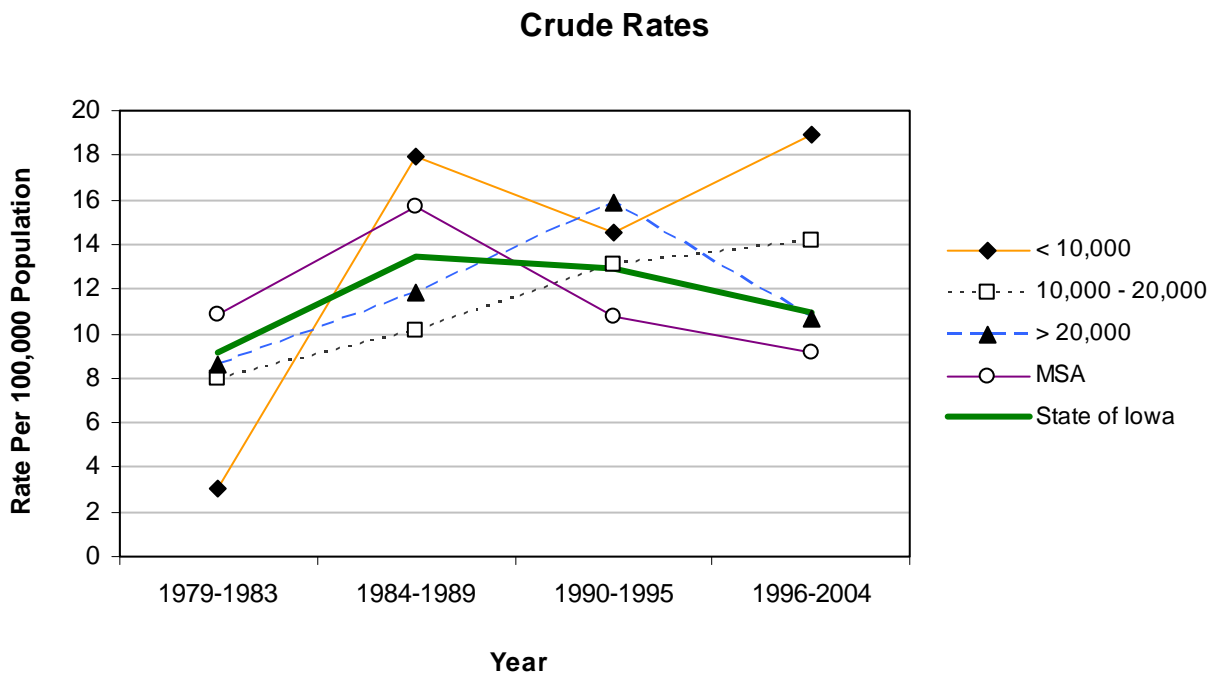
Age 15-19: Motor Vehicle Traffic Mortality by County Group 1979-2004



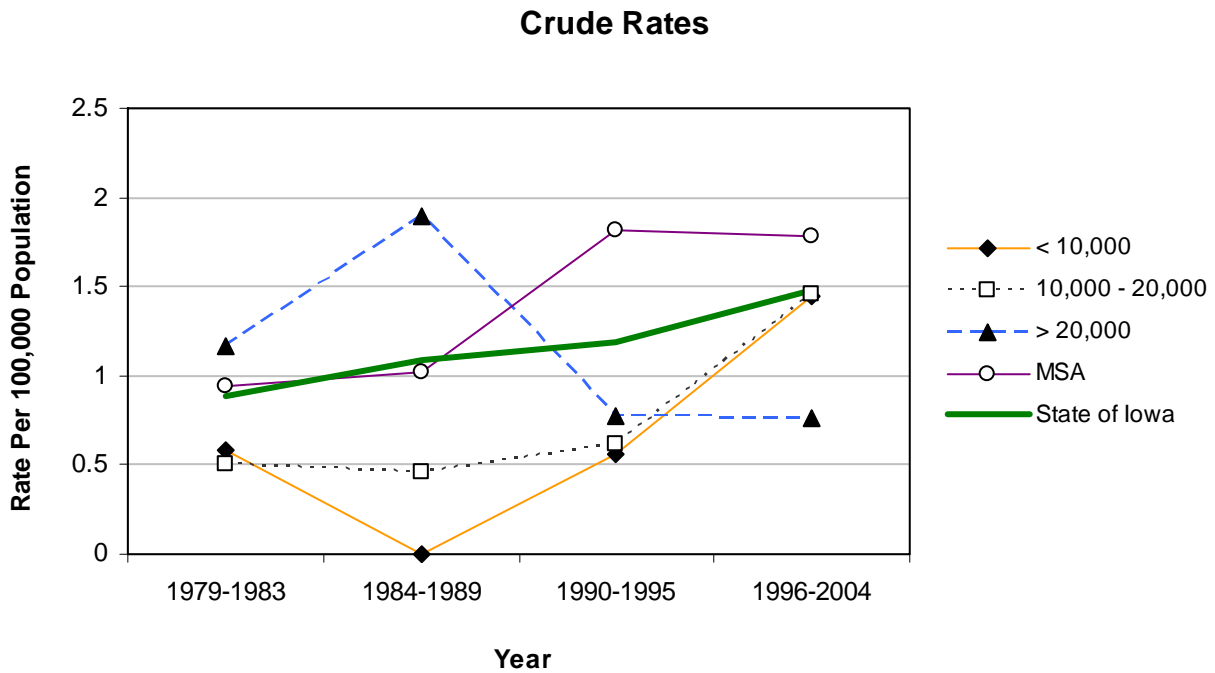
Age 0-14: Suicides by County Group 1979-2004



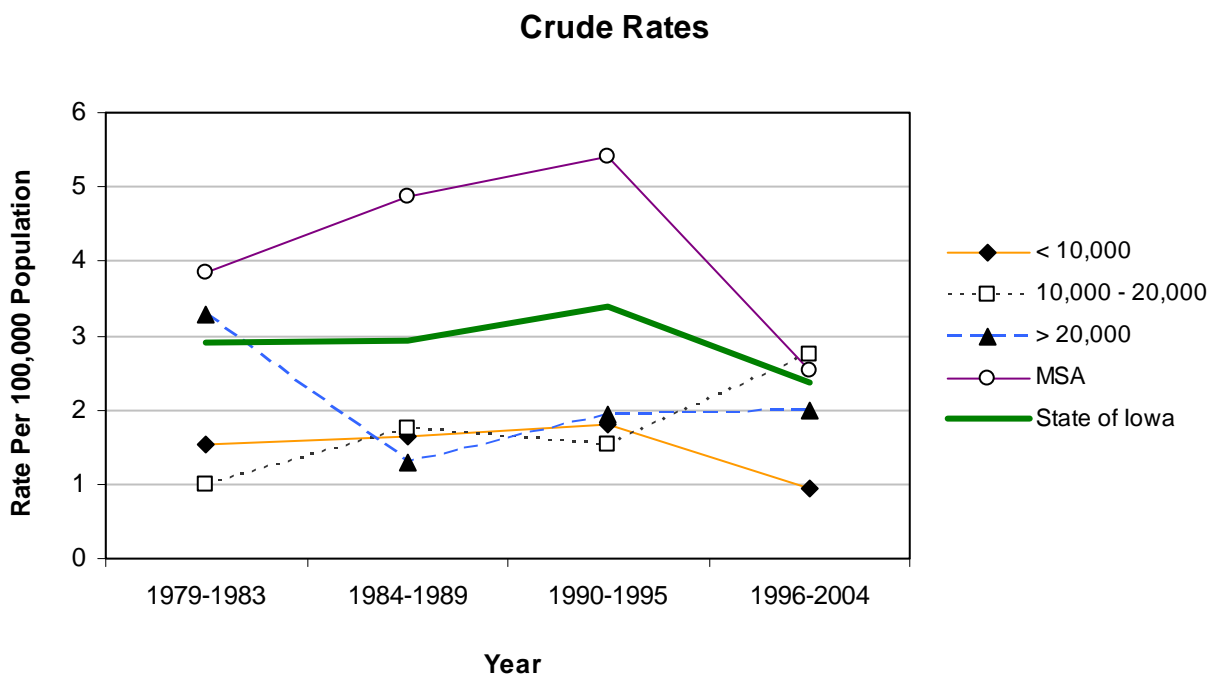
Age 15-19: Suicides by County Group 1979-2004



Age 0-14: Homicides by County Group 1979-2004



Age 15-19: Homicides by County Group 1979-2004



[This page has been intentionally left blank.]