

## Demographics

Many of the health indicators in the 2009 Iowa Health Fact Book are presented with rates calculated using the population of the county and state. These rates are also stratified into population subgroups based on a 10-year average of each county's population. This not only contrasts the rural and urban aspects of the state but also includes trends in age and ethnic distribution of the population. The Year 2000 U.S. standard population age distribution is used for calculating age-adjusted rates. Population estimates have been obtained from the U.S. Census and from the State Health Registry of Iowa via the National Cancer Institute's SEER\*Stat software program. Estimates are used for individual years and for year groupings where appropriate.

### KEY FEATURES IN IOWA DEMOGRAPHICS...

- ✓ Increasing urbanization
- ✓ Females represent 50.6% of population
- ✓ Median age 38.1 years
- ✓ Over 65 represents 15% of population

The population in Iowa is becoming increasingly urbanized. Using the 2000 Census, twenty counties were defined as Metropolitan Statistical Areas (MSA) doubling the previous number of ten MSA defined counties. The Metropolitan Statistical Areas are Ames (Story County), Cedar Rapids (Benton, Jones, Linn Counties), Davenport (Scott County), Des Moines (Dallas, Guthrie, Madison, Polk, Warren Counties), Dubuque (Dubuque County), Iowa City (Johnson, Washington Counties), Omaha-Council Bluffs (Harrison, Mills, Pottawattamie Counties), Sioux City (Woodbury County), Waterloo-Cedar Falls (Black Hawk, Bremer, Grundy Counties). The estimated population in Iowa surpassed 3 million people in 2008 and over 56% of the 2008 estimated Iowa population of 3,002,555 lived in MSA counties.

### CHARACTERISTICS OF RACE / ETHNICITY

White	94.2%
Black or African American	2.7%
Asian	1.6%
Some other race or races	1.5%
Hispanic or Latino (of any race)	4.2%

The distribution of the population by age is different among the county groupings. The larger counties have a greater percentage of their population as young adults (15-44 years) compared to the

smaller counties. Conversely, the smaller counties have a larger percentage of persons 65 years of age or older. These differences in age distributions are standardized through age-adjustment so risk factors other than age can be compared. As shown, the population of the state has become older since 1970. The percent of Iowans age 65 and older increased steadily through the early 1990's, but has slightly decreased since then.

## State Population Distributions

### Estimated Annual Population Distribution 1999-2008

Counties with Average Population < 10,000	County	1999	2000	2001	2002	2003	2004	2005
	Adair	8,298	8,243	8,077	7,965	7,917	7,848	7,721
Adams	4,498	4,482	4,397	4,352	4,322	4,257	4,161	
Audubon	6,896	6,830	6,654	6,547	6,434	6,374	6,248	
Clarke	8,908	9,133	9,181	9,172	9,217	9,228	9,084	
Davis	8,518	8,541	8,571	8,566	8,498	8,561	8,514	
Decatur	8,646	8,689	8,656	8,550	8,478	8,465	8,472	
Fremont	7,997	8,010	7,869	7,772	7,714	7,618	7,570	
Greene	10,394	10,366	10,145	10,100	10,009	9,941	9,795	
Howard	9,950	9,932	9,868	9,796	9,715	9,682	9,624	
Humboldt	10,414	10,381	10,282	10,078	10,020	9,944	9,810	
Ida	7,914	7,837	7,659	7,547	7,444	7,295	7,169	
Lucas	9,461	9,422	9,443	9,439	9,474	9,623	9,592	
Monona	10,056	10,020	9,819	9,706	9,685	9,514	9,348	
Monroe	8,061	8,016	7,934	7,788	7,805	7,778	7,722	
Osceola	7,049	7,003	6,939	6,853	6,818	6,773	6,633	
Palo Alto	10,137	10,147	10,029	9,845	9,670	9,660	9,586	
Pocahontas	8,808	8,662	8,461	8,341	8,150	7,978	7,804	
Ringgold	5,449	5,469	5,390	5,294	5,264	5,248	5,193	
Taylor	6,905	6,958	6,898	6,822	6,750	6,692	6,537	
Van Buren	7,784	7,809	7,736	7,737	7,673	7,666	7,628	
Wayne	6,738	6,730	6,642	6,640	6,573	6,508	6,428	
Worth	7,890	7,909	7,802	7,797	7,722	7,713	7,721	
<b>Total</b>	<b>180,771</b>	<b>180,589</b>	<b>178,452</b>	<b>176,707</b>	<b>175,352</b>	<b>174,366</b>	<b>172,360</b>	

Allamakee	14,651	14,675	14,346	14,336	14,400	14,412	14,474
Appanoose	13,709	13,721	13,560	13,380	13,457	13,364	13,327
Buena Vista	20,508	20,411	20,193	20,144	19,989	19,804	19,720
Butler	15,286	15,305	15,007	14,827	14,785	14,786	14,718
Calhoun	11,190	11,115	10,946	10,719	10,524	10,392	10,252
Cass	14,649	14,684	14,473	14,211	14,225	14,075	13,916
Cedar	18,178	18,187	18,076	18,052	18,063	18,037	17,944
Cherokee	13,096	13,035	12,839	12,534	12,352	12,218	12,030
Chickasaw	13,209	13,095	13,052	12,772	12,560	12,448	12,280
Clay	17,339	17,372	17,249	17,062	16,949	16,908	16,777
Clayton	18,825	18,678	18,454	18,218	18,119	18,043	17,876
Crawford	16,911	16,942	16,878	16,826	16,724	16,642	16,554
Delaware	18,444	18,404	18,212	18,123	17,978	17,798	17,622
Dickinson	16,333	16,424	16,476	16,348	16,322	16,480	16,610
Emmet	11,103	11,027	10,875	10,799	10,687	10,513	10,476
Floyd	16,959	16,900	16,618	16,587	16,512	16,420	16,311
Franklin	10,780	10,704	10,603	10,633	10,568	10,607	10,610
Hamilton	16,387	16,438	16,168	16,212	16,161	16,023	15,937
Hancock	12,091	12,100	11,904	11,761	11,772	11,671	11,624
Hardin	18,784	18,812	18,650	18,424	18,217	18,008	17,775
Iowa	15,570	15,671	15,784	15,762	15,836	15,812	15,925
Jefferson	16,282	16,181	16,034	15,804	15,723	15,688	15,560
Keokuk	11,317	11,400	11,374	11,344	11,198	11,079	10,899
Kossuth	17,258	17,163	16,779	16,496	16,290	16,151	15,949
Louisa	12,174	12,183	12,167	12,195	12,176	12,049	11,775
Lyon	11,812	11,763	11,637	11,589	11,569	11,526	11,467
Mitchell	10,895	10,874	10,739	10,828	10,831	10,896	10,791
Montgomery	11,767	11,771	11,508	11,302	11,190	11,163	11,179

## State Population Distributions (continued)

Estimated Annual Population Distribution 1999-2008								
	County	2006	2007	2008	Percent Change <sup>1</sup>	Ten Year Average <sup>2</sup>	Male <sup>3</sup>	Female <sup>3</sup>
Counties with Average Population < 10,000	Adair	7,679	7,621	7,506	-8.9%	7,887	3,829	4,004
	Adams	4,137	4,085	4,040	-9.9%	4,273	2,103	2,148
	Audubon	6,147	6,058	6,033	-11.7%	6,422	3,064	3,295
	Clarke	9,061	8,979	9,032	-1.1%	9,099	4,559	4,603
	Davis	8,531	8,560	8,569	0.3%	8,543	4,253	4,286
	Decatur	8,402	8,432	8,409	-3.2%	8,520	4,164	4,319
	Fremont	7,565	7,553	7,446	-7.0%	7,711	3,799	3,858
	Greene	9,569	9,479	9,293	-10.4%	9,909	4,842	5,053
	Howard	9,540	9,516	9,484	-4.5%	9,711	4,816	4,868
	Humboldt	9,732	9,578	9,514	-8.4%	9,975	4,888	5,045
	Ida	6,989	6,930	6,862	-12.4%	7,365	3,580	3,717
	Lucas	9,460	9,433	9,290	-1.4%	9,464	4,657	4,869
	Monona	9,181	9,071	8,966	-10.5%	9,537	4,620	4,875
	Monroe	7,644	7,583	7,577	-5.5%	7,791	3,799	3,954
	Osceola	6,581	6,451	6,444	-8.0%	6,754	3,337	3,398
	Palo Alto	9,455	9,427	9,345	-7.9%	9,730	4,745	4,911
	Pocahontas	7,685	7,666	7,560	-12.7%	8,111	3,960	4,042
	Ringgold	5,142	5,141	5,156	-5.7%	5,275	2,552	2,682
	Taylor	6,512	6,391	6,298	-9.5%	6,676	3,255	3,415
	Van Buren	7,663	7,672	7,676	-1.7%	7,704	3,829	3,851
	Wayne	6,374	6,269	6,253	-7.1%	6,515	3,108	3,405
Worth	7,653	7,657	7,661	-3.1%	7,752	3,863	3,866	
<b>Total</b>		170,702	169,552	168,414	-6.7%	174,726	85,622	88,464
Counties with Average Population 10,000 – 20,000	Allamakee	14,489	14,494	14,538	-0.9%	14,481	7,308	7,155
	Appanoose	13,182	12,986	12,850	-6.3%	13,354	6,414	6,937
	Buena Vista	19,655	19,585	19,702	-3.5%	19,971	10,068	9,852
	Butler	14,662	14,654	14,644	-4.3%	14,867	7,313	7,455
	Calhoun	10,121	9,962	9,887	-11.0%	10,511	5,267	5,145
	Cass	13,895	13,855	13,840	-5.7%	14,182	6,858	7,220
	Cedar	17,981	17,963	18,079	-0.6%	18,056	8,907	9,123
	Cherokee	11,823	11,679	11,552	-11.4%	12,316	6,023	6,181
	Chickasaw	12,281	12,184	12,121	-7.4%	12,600	6,246	6,233
	Clay	16,733	16,686	16,691	-3.9%	16,977	8,209	8,685
	Clayton	17,775	17,672	17,566	-6.0%	18,123	8,962	9,055
	Crawford	16,482	16,516	16,415	-3.1%	16,689	8,409	8,282
	Delaware	17,511	17,450	17,301	-6.0%	17,884	8,857	8,956
	Dickinson	16,668	16,669	16,775	2.1%	16,510	8,067	8,427
	Emmet	10,417	10,397	10,457	-5.2%	10,675	5,208	5,378
	Floyd	16,339	16,269	16,183	-4.2%	16,510	7,989	8,461
	Franklin	10,497	10,548	10,477	-2.1%	10,603	5,282	5,332
	Hamilton	15,762	15,558	15,357	-6.6%	16,000	7,982	8,052
	Hancock	11,546	11,368	11,354	-6.2%	11,719	5,766	5,918
	Hardin	17,616	17,473	17,371	-7.7%	18,113	8,858	9,167
	Iowa	15,957	15,860	15,877	1.3%	15,805	7,778	8,098
	Jefferson	15,501	15,551	15,463	-4.4%	15,779	7,690	7,982
	Keokuk	10,774	10,750	10,697	-6.2%	11,083	5,405	5,668
	Kossuth	15,710	15,590	15,463	-9.9%	16,285	7,910	8,217
Louisa	11,766	11,768	11,725	-3.8%	11,998	5,976	6,036	
Lyon	11,366	11,247	11,234	-4.5%	11,521	5,737	5,777	
Mitchell	10,781	10,745	10,710	-1.5%	10,809	5,318	5,514	
Montgomery	11,137	10,978	10,870	-7.7%	11,286	5,318	5,885	

<sup>1</sup>Percent change from 2000 to 2008<sup>2</sup>1999-2008 Average<sup>3</sup>2002-2006 Average

Source: Population Division, U.S. Census Bureau and SEER\*Stat

## State Population Distributions (continued)

Estimated Annual Population Distribution 1999-2008								
	County	1999	2000	2001	2002	2003	2004	2005
Counties with Average Population 10,000 – 20,000	O'Brien	15,200	15,102	14,881	14,683	14,587	14,340	14,249
	Page	17,112	16,976	16,869	16,425	16,166	16,002	16,007
	Poweshiek	18,797	18,815	18,850	18,756	18,809	18,805	18,643
	Sac	11,686	11,529	11,359	11,042	10,852	10,725	10,540
	Shelby	13,179	13,173	12,995	12,844	12,754	12,657	12,419
	Tama	18,121	18,103	18,013	17,903	17,850	17,938	17,910
	Union	12,397	12,309	12,202	12,084	11,885	11,925	11,951
	Winnebago	11,660	11,723	11,535	11,336	11,317	11,211	11,203
	Wright	14,379	14,334	14,056	13,826	13,627	13,537	13,373
	<b>Total</b>	<b>548,038</b>	<b>547,099</b>	<b>541,361</b>	<b>536,187</b>	<b>533,024</b>	<b>530,153</b>	<b>526,673</b>
Counties with Average Population > 20,000	Boone	26,164	26,224	26,220	26,044	26,137	26,243	26,334
	Buchanan	21,158	21,093	20,942	20,758	20,774	20,849	20,757
	Carroll	21,631	21,421	21,210	21,135	20,983	20,890	20,918
	Cerro Gordo	46,637	46,447	45,741	45,264	45,146	44,664	44,341
	Clinton	50,346	50,149	49,841	49,600	49,471	49,358	49,268
	Des Moines	42,515	42,351	41,916	41,305	41,132	40,725	40,540
	Fayette	22,011	22,008	21,675	21,429	21,305	21,034	20,954
	Henry	20,351	20,336	20,337	19,969	20,106	20,074	20,167
	Jackson	20,217	20,296	20,255	20,122	20,107	20,090	20,051
	Jasper	37,096	37,213	37,269	37,369	37,406	37,266	37,028
	Lee	38,281	38,052	37,381	36,855	36,473	36,394	36,125
	Mahaska	22,400	22,335	22,377	22,311	22,026	22,069	22,233
	Marion	31,879	32,052	32,506	32,411	32,279	32,263	32,321
	Marshall	39,313	39,311	39,263	39,026	39,040	39,251	39,066
	Muscatine	41,587	41,722	41,786	41,796	41,674	41,810	41,968
	Plymouth	24,774	24,849	24,749	24,562	24,597	24,709	24,577
	Sioux	31,669	31,589	31,738	31,792	31,780	31,867	31,909
	Wapello	36,042	36,051	35,952	35,802	35,720	35,660	35,785
Webster	40,255	40,235	40,036	39,667	39,368	38,932	38,579	
Winneshiek	21,289	21,310	21,238	21,127	20,903	20,906	20,886	
<b>Total</b>	<b>635,615</b>	<b>635,044</b>	<b>632,432</b>	<b>628,344</b>	<b>626,427</b>	<b>625,054</b>	<b>623,807</b>	
MSA Counties	Benton	25,214	25,308	25,618	25,988	26,174	26,494	26,647
	Black Hawk	127,786	128,012	127,624	126,622	126,090	126,243	126,549
	Bremer	23,398	23,325	23,403	23,206	23,283	23,388	23,420
	Dallas	39,691	40,750	42,721	44,331	46,317	49,400	51,796
	Dubuque	88,934	89,143	88,988	89,205	90,109	90,633	90,975
	Grundy	12,332	12,369	12,287	12,305	12,243	12,249	12,238
	Guthrie	11,403	11,353	11,222	11,221	11,319	11,361	11,214
	Harrison	15,510	15,666	15,639	15,499	15,549	15,549	15,530
	Johnson	109,814	111,006	113,849	115,534	117,460	119,764	121,236
	Jones	20,220	20,221	20,159	20,152	20,217	20,373	20,313
	Linn	189,931	191,701	194,295	195,893	196,707	198,139	200,191
	Madison	13,898	14,019	14,150	14,317	14,457	14,693	14,870
	Mills	14,478	14,547	14,482	14,535	14,600	14,701	14,853
	Polk	370,592	374,601	381,062	385,879	390,308	394,352	402,762
	Pottawattamie	87,153	87,704	87,662	87,933	88,044	88,784	88,981
	Scott	158,765	158,668	158,501	158,622	158,758	159,307	160,101
	Story	79,372	79,981	80,052	81,607	81,481	81,957	81,852
	Warren	40,340	40,671	41,017	41,296	41,963	42,294	42,962
	Washington	20,578	20,670	21,005	20,993	21,008	21,029	21,057
Woodbury	103,801	103,877	103,313	103,019	102,517	102,456	101,388	
<b>Total</b>	<b>1,553,210</b>	<b>1,563,592</b>	<b>1,577,049</b>	<b>1,588,157</b>	<b>1,598,604</b>	<b>1,613,166</b>	<b>1,628,935</b>	

## State Population Distributions (continued)

Estimated Annual Population Distribution 1999-2008								
	County	2006	2007	2008	Percent Change <sup>1</sup>	Ten Year Average <sup>2</sup>	Male <sup>3</sup>	Female <sup>3</sup>
Counties with Average Population 10,000 – 20,000	O'Brien	14,184	14,060	13,952	-7.6%	14,524	7,100	7,326
	Page	16,046	15,896	15,664	-7.7%	16,316	8,247	7,892
	Poweshiek	18,670	18,713	18,590	-1.2%	18,745	9,060	9,694
	Sac	10,528	10,360	10,311	-10.6%	10,893	5,291	5,461
	Shelby	12,305	12,310	12,131	-7.9%	12,677	6,213	6,393
	Tama	17,828	17,767	17,690	-2.3%	17,912	8,816	9,090
	Union	12,059	12,156	12,261	-0.4%	12,123	5,755	6,231
	Winnebago	11,011	10,927	10,901	-7.0%	11,282	5,475	5,757
	Wright	13,145	13,021	12,903	-10.0%	13,620	6,698	6,829
	<b>Total</b>	<b>524,203</b>	<b>521,667</b>	<b>519,602</b>	<b>-5.0%</b>	<b>532,801</b>	<b>261,780</b>	<b>268,864</b>
Counties with Average Population > 20,000	Boone	26,314	26,355	26,349	0.5%	26,238	12,872	13,360
	Buchanan	20,844	20,903	21,032	-0.3%	20,911	10,368	10,439
	Carroll	20,838	20,926	20,926	-2.3%	21,088	10,231	10,734
	Cerro Gordo	44,128	44,004	43,786	-5.7%	45,016	21,567	23,167
	Clinton	49,183	49,056	48,942	-2.4%	49,521	24,045	25,361
	Des Moines	40,459	40,587	40,629	-4.1%	41,216	19,851	21,095
	Fayette	20,701	20,397	20,273	-7.9%	21,179	10,437	10,666
	Henry	20,101	20,173	20,213	-0.6%	20,183	10,251	9,841
	Jackson	20,058	20,018	19,965	-1.6%	20,118	9,951	10,154
	Jasper	36,816	36,647	36,583	-1.7%	37,069	18,898	18,305
	Lee	35,877	35,706	35,408	-6.9%	36,655	18,068	18,298
	Mahaska	22,153	22,253	22,321	-0.1%	22,248	11,094	11,084
	Marion	32,728	32,489	32,571	1.6%	32,350	16,102	16,316
	Marshall	38,934	39,214	39,523	0.5%	39,194	19,450	19,677
	Muscatine	42,190	42,335	42,504	1.9%	41,937	20,827	21,113
	Plymouth	24,485	24,338	24,323	-2.1%	24,596	12,282	12,318
	Sioux	32,118	32,044	32,200	1.9%	31,871	15,746	16,162
	Wapello	35,718	35,459	35,513	-1.5%	35,770	17,501	18,264
	Webster	38,635	38,606	38,517	-4.3%	39,283	19,784	19,290
Winneshiek	20,847	20,888	20,913	-1.9%	21,031	10,346	10,605	
<b>Total</b>	<b>623,127</b>	<b>622,398</b>	<b>622,491</b>	<b>-2.0%</b>	<b>627,474</b>	<b>309,671</b>	<b>316,249</b>	
MSA Counties	Benton	26,564	26,501	26,532	4.8%	26,104	13,158	13,220
	Black Hawk	127,005	127,204	128,347	0.3%	127,148	61,039	65,657
	Bremer	23,583	23,723	23,690	1.6%	23,442	11,379	12,015
	Dallas	54,612	57,201	59,930	47.1%	48,675	2,447	24,879
	Dubuque	91,398	92,296	92,724	4.0%	90,440	44,190	46,327
	Grundy	12,237	12,147	12,183	-1.5%	12,259	6,044	6,223
	Guthrie	11,066	11,015	10,956	-3.5%	11,213	5,578	5,673
	Harrison	15,507	15,403	15,222	-2.8%	15,507	7,629	7,907
	Johnson	123,126	125,454	128,094	15.4%	118,534	59,476	60,178
	Jones	20,331	20,350	20,346	0.6%	202,684	10,665	9,623
	Linn	202,488	205,621	208,574	8.8%	198,354	97,517	101,289
	Madison	15,194	15,377	15,507	10.6%	146,484	7,302	7,417
	Mills	15,117	15,123	15,113	3.9%	14,755	7,423	7,354
	Polk	410,089	417,668	424,778	13.4%	395,209	193,428	203,870
	Pottawattamie	89,284	89,355	89,647	2.2%	88,455	43,426	45,242
	Scott	161,476	162,445	164,690	3.8%	160,133	78,369	81,403
	Story	83,505	85,306	86,754	8.5%	82,187	42,354	39,940
	Warren	43,698	44,408	45,059	10.8%	42,371	20,793	21,678
	Washington	21,162	21,236	21,343	3.3%	21,008	10,220	10,840
Woodbury	101,796	101,910	102,559	-1.3%	102,664	50,220	52,202	
<b>Total</b>	<b>1,649,238</b>	<b>1,669,743</b>	<b>1,692,048</b>	<b>8.2%</b>	<b>1,613,374</b>	<b>794,657</b>	<b>822,937</b>	

<sup>1</sup>Percent change from 2000 to 2008<sup>2</sup>1999-2008 Average<sup>3</sup>2002-2006 Average

Source: Population Division, U.S. Census Bureau and SEER\*Stat

## Average Annual Population Distribution by Age: 2002-2006

		County	% <1	% 1-4	% 5-14	% 15-24	% 25-44	% 45-64	% 65-84	% 85 +
Counties with Average Population < 10,000		Adair	0.9%	3.8%	12.2%	12.3%	22.9%	25.7%	17.4%	4.8%
		Adams	1.0%	3.9%	12.9%	11.5%	22.9%	26.1%	17.9%	3.9%
		Audubon	1.0%	3.9%	13.9%	11.8%	20.6%	26.0%	18.2%	4.6%
		Clarke	1.4%	5.4%	13.7%	12.7%	25.1%	25.2%	13.5%	3.0%
		Davis	1.4%	5.7%	14.4%	12.9%	23.9%	24.6%	13.8%	3.2%
		Decatur	1.1%	4.4%	11.9%	21.2%	20.9%	22.6%	14.7%	3.1%
		Fremont	1.1%	4.4%	13.2%	11.7%	22.3%	27.4%	16.6%	3.3%
		Greene	1.0%	4.2%	13.2%	12.4%	22.1%	25.5%	17.0%	4.6%
		Howard	1.2%	4.7%	14.0%	12.3%	23.7%	24.3%	16.0%	3.9%
		Humboldt	1.2%	4.4%	12.3%	13.5%	21.3%	26.5%	16.9%	3.9%
		Ida	1.1%	4.3%	12.7%	12.2%	21.5%	26.5%	17.8%	3.8%
		Lucas	1.1%	4.7%	14.0%	12.8%	24.6%	24.6%	14.7%	3.5%
		Monona	1.1%	4.3%	12.4%	10.9%	22.1%	26.0%	18.3%	5.0%
		Monroe	1.1%	4.7%	13.7%	12.2%	24.0%	25.2%	15.8%	3.3%
		Osceola	1.1%	4.6%	13.5%	13.2%	23.3%	25.7%	15.4%	3.3%
		Palo Alto	1.2%	4.4%	11.9%	15.5%	20.7%	24.7%	17.5%	4.1%
		Pocahontas	0.9%	3.6%	12.5%	12.5%	19.7%	28.0%	18.5%	4.2%
		Ringgold	1.2%	4.8%	12.3%	12.6%	20.6%	25.1%	19.3%	4.2%
		Taylor	1.1%	4.5%	12.8%	12.6%	22.1%	25.5%	17.3%	4.1%
		Van Buren	1.2%	4.5%	13.2%	12.6%	23.0%	26.4%	15.8%	3.3%
		Wayne	1.2%	4.6%	12.6%	12.3%	21.1%	25.4%	18.7%	4.1%
	Worth	1.0%	4.3%	12.8%	11.7%	24.7%	26.8%	15.2%	3.5%	
	<b>Total</b>		1.1%	4.5%	13.0%	13.0%	22.5%	25.6%	16.5%	3.8%
Counties with Average Population 10,000 – 20,000		Allamakee	1.3%	4.8%	13.2%	12.2%	24.6%	25.6%	15.0%	3.1%
		Appanoose	1.2%	4.6%	12.4%	12.7%	23.8%	25.4%	16.2%	3.6%
		Buena Vista	1.3%	4.8%	14.2%	17.0%	22.8%	24.0%	13.0%	2.9%
		Butler	1.1%	4.3%	12.7%	12.2%	22.6%	27.4%	16.4%	3.4%
		Calhoun	1.0%	3.7%	11.6%	12.0%	22.6%	26.9%	17.9%	4.4%
		Cass	1.1%	4.4%	12.4%	11.8%	22.6%	26.6%	17.1%	4.1%
		Cedar	1.1%	4.5%	13.5%	12.7%	25.1%	27.1%	13.0%	3.1%
		Cherokee	0.9%	4.0%	12.5%	12.3%	21.3%	27.9%	17.8%	3.3%
		Chickasaw	1.2%	4.6%	13.7%	13.0%	22.7%	26.7%	15.2%	2.9%
		Clay	1.2%	4.8%	12.8%	12.0%	25.1%	25.8%	15.3%	3.1%
		Clayton	1.1%	4.5%	13.2%	12.3%	23.4%	26.8%	15.4%	3.3%
		Crawford	1.4%	5.4%	13.6%	14.1%	23.8%	25.0%	13.8%	2.9%
		Delaware	1.1%	4.7%	14.9%	13.7%	24.6%	25.1%	13.3%	2.6%
		Dickinson	1.0%	4.3%	11.5%	11.4%	22.6%	28.2%	17.6%	3.3%
		Emmet	1.3%	4.7%	12.0%	15.6%	22.1%	25.2%	15.5%	3.6%
		Floyd	1.2%	4.7%	13.5%	12.1%	23.2%	25.9%	15.8%	3.6%
		Franklin	1.2%	4.6%	12.8%	12.5%	22.8%	26.5%	16.2%	3.4%
		Hamilton	1.1%	4.8%	13.5%	12.3%	25.2%	25.1%	15.0%	3.0%
		Hancock	1.1%	4.3%	13.6%	13.0%	22.7%	27.0%	15.0%	3.3%
		Hardin	1.1%	4.6%	12.2%	14.9%	21.4%	25.4%	16.4%	4.1%
		Iowa	1.2%	4.7%	14.6%	12.3%	25.1%	24.9%	13.8%	3.4%
		Jefferson	1.0%	3.9%	11.9%	13.5%	21.9%	33.7%	11.4%	2.5%
		Keokuk	1.2%	4.8%	13.8%	12.2%	23.3%	25.4%	15.5%	3.8%
		Kossuth	1.0%	4.1%	13.0%	12.6%	20.9%	27.3%	17.5%	3.4%
		Louisa	1.3%	5.5%	15.0%	12.8%	26.8%	24.2%	12.2%	2.2%
		Lyon	1.4%	5.4%	14.9%	13.1%	23.4%	23.8%	14.7%	3.3%
	Mitchell	1.2%	5.0%	14.3%	12.6%	21.6%	24.4%	16.7%	4.3%	
	Montgomery	1.2%	4.7%	13.4%	11.3%	23.3%	26.4%	15.8%	3.9%	
	O'Brien	1.2%	4.5%	12.6%	12.9%	21.8%	25.0%	17.5%	4.5%	

## Average Annual Population Distribution by Age: 2002-2006 (cont.)

Counties with Average Population 10,000 – 20,000 (cont)	County	% <1	% 1-4	% 5-14	% 15-24	% 25-44	% 45-64	% 65-84	% 85 +
	Page	1.0%	4.2%	11.9%	12.9%	24.7%	25.3%	16.6%	3.4%
	Poweshiek	1.0%	4.2%	12.0%	17.7%	22.7%	24.6%	14.4%	3.3%
	Sac	1.0%	4.1%	12.6%	12.3%	20.8%	26.2%	18.3%	4.7%
	Shelby	1.0%	4.3%	13.7%	12.1%	22.7%	25.7%	16.9%	3.6%
	Tama	1.3%	5.3%	14.3%	12.8%	23.2%	24.8%	14.8%	3.4%
	Union	1.2%	4.5%	12.2%	13.2%	23.8%	26.3%	15.7%	3.1%
	Winnebago	1.0%	4.4%	12.6%	14.6%	21.7%	26.9%	15.1%	3.7%
	Wright	1.3%	4.7%	13.1%	11.5%	22.0%	26.6%	16.7%	4.1%
	<b>Total</b>	1.2%	4.6%	13.1%	13.1%	23.2%	26.1%	15.4%	3.4%

Counties with Average Population > 20,000	Boone	1.2%	4.7%	13.1%	13.6%	26.0%	25.7%	13.0%	2.8%
	Buchanan	1.5%	5.8%	14.6%	13.7%	24.9%	24.7%	12.5%	2.4%
	Carroll	1.2%	4.7%	13.6%	13.4%	23.5%	24.3%	15.5%	3.7%
	Cerro Gordo	1.1%	4.4%	12.7%	13.0%	25.0%	26.0%	14.9%	2.8%
	Clinton	1.2%	4.9%	13.7%	13.1%	25.2%	25.8%	13.6%	2.5%
	Des Moines	1.3%	4.9%	13.1%	12.7%	24.3%	26.8%	14.0%	2.9%
	Fayette	1.1%	4.2%	13.4%	13.7%	23.0%	25.2%	15.9%	3.5%
	Henry	1.1%	4.7%	12.9%	13.9%	27.7%	24.8%	12.2%	2.7%
	Jackson	1.0%	4.5%	13.7%	12.6%	24.5%	25.9%	14.9%	2.8%
	Jasper	1.2%	4.9%	13.4%	11.8%	27.2%	25.6%	13.5%	2.4%
	Lee	1.1%	4.5%	12.8%	12.4%	24.7%	27.8%	13.9%	2.7%
	Mahaska	1.3%	5.1%	13.6%	14.6%	25.6%	24.1%	13.2%	2.6%
	Marion	1.3%	4.9%	13.4%	15.5%	24.9%	24.2%	12.9%	2.8%
	Marshall	1.5%	5.6%	13.4%	12.7%	24.2%	26.4%	13.7%	2.5%
	Muscatine	1.5%	5.8%	14.5%	13.0%	27.0%	25.5%	10.9%	1.8%
	Plymouth	1.3%	5.1%	14.7%	13.9%	23.8%	25.7%	13.1%	2.5%
	Sioux	1.5%	5.7%	13.9%	20.8%	22.1%	21.1%	12.3%	2.7%
	Wapello	1.3%	5.2%	12.8%	13.5%	25.0%	25.2%	14.2%	2.8%
	Webster	1.2%	4.9%	13.0%	16.0%	23.9%	24.1%	13.9%	2.9%
	Winneshiek	0.9%	3.8%	11.7%	22.3%	21.8%	23.4%	13.2%	2.9%
<b>Total</b>	1.2%	5.0%	13.4%	14.1%	24.8%	25.3%	13.5%	2.7%	

MSA Counties	Benton	1.2%	5.0%	14.7%	13.2%	27.3%	24.0%	12.0%	2.6%
	Blackhawk	1.3%	4.9%	12.4%	19.4%	24.1%	23.9%	11.8%	2.3%
	Bremer	1.1%	4.3%	12.6%	18.1%	21.8%	25.8%	13.5%	2.8%
	Dallas	1.4%	5.8%	15.5%	13.5%	31.8%	22.6%	8.0%	1.5%
	Dubuque	1.3%	5.3%	13.7%	14.9%	25.2%	24.6%	12.5%	2.4%
	Grundy	1.0%	4.3%	13.0%	13.4%	22.7%	26.9%	15.3%	3.5%
	Guthrie	1.2%	4.8%	12.6%	11.5%	23.7%	26.8%	16.3%	3.1%
	Harrison	1.1%	4.6%	14.0%	12.5%	25.2%	25.4%	14.3%	3.0%
	Johnson	1.2%	4.9%	11.0%	25.1%	30.2%	19.9%	6.6%	1.1%
	Jones	1.0%	4.3%	12.7%	13.3%	27.5%	25.2%	13.5%	2.6%
	Linn	1.4%	5.6%	14.0%	13.5%	28.9%	24.0%	10.6%	1.9%
	Madison	1.3%	5.5%	14.5%	13.0%	26.2%	25.5%	11.4%	2.6%
	Mills	1.2%	4.9%	14.6%	13.2%	25.9%	27.8%	10.5%	1.8%
	Polk	1.6%	6.2%	14.2%	12.7%	30.6%	23.6%	9.3%	1.6%
	Pottawattamie	1.4%	5.5%	13.9%	13.5%	27.2%	24.9%	11.8%	1.8%
	Scott	1.4%	5.7%	14.3%	13.9%	27.0%	25.7%	10.4%	1.6%
	Story	1.1%	4.3%	9.7%	31.3%	25.2%	18.2%	8.3%	1.8%
	Warren	1.2%	5.0%	14.2%	15.6%	26.2%	25.4%	10.5%	1.8%
	Washington	1.4%	5.7%	14.0%	12.0%	25.1%	24.6%	13.9%	3.4%
	Woodbury	1.6%	6.1%	15.2%	13.9%	26.8%	23.4%	11.0%	1.9%
<b>Total</b>	1.4%	5.5%	13.6%	15.8%	27.9%	23.7%	10.3%	1.9%	

Source: Population Division, U.S. Census Bureau and SEER\*Stat

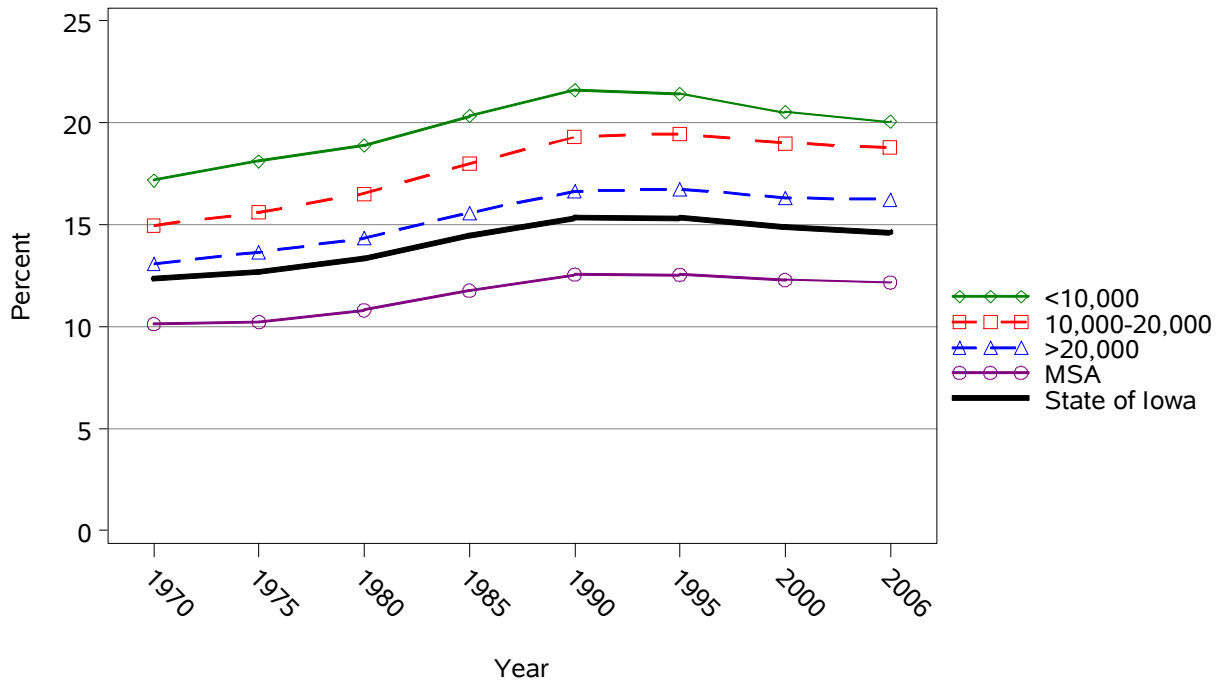
Percent Population Change from 2000 – 2008



□ -13 - -7    □ -7 - -3    □ -3 - 0    □ 0 - 47

Agging Trend in Iowa

Percent of Iowans Age 65 and Older



## Estimated Year 2000 U.S. Standard Population

Age Range	Population	Percent of Total
< 1	13,818	1.4%
01-04	55,317	5.5%
05-09	72,533	7.3%
10-14	73,032	7.3%
15-19	72,169	7.2%
20-24	66,478	6.6%
25-29	64,529	6.5%
30-34	71,044	7.1%
35-39	80,762	8.1%
40-44	81,851	8.2%
45-49	72,118	7.2%
50-54	62,716	6.3%
55-59	48,454	4.8%
60-64	38,793	3.9%
65-69	34,264	3.4%
70-74	31,773	3.2%
75-79	26,999	2.7%
80-84	17,842	1.8%
85+	15,508	1.6%
<b>Total</b>	<b>1,000,000</b>	<b>100.0%</b>

Source: Population Division, U.S. Census Bureau, and SEER\*Stat

[This page has been intentionally left blank.]