

## Infectious Diseases

Fifty-one specific infectious diseases are listed as reportable conditions in the Iowa Administrative Code 641, Chapter 1, although many other diseases are reportable as rare or unusual diseases. Disease surveillance, consulting, and outbreak management are provided by the Center for Acute Disease Epidemiology. The Bureau of Prevention and Immunization provided education programs and vaccine distribution services. Local public health nurses or

### HIGHLIGHTS...

- ✓ IDPH received 1964 disease reports of cases of Mumps in 2006.
- ✓ IDPH received 107 reports of cases of Hepatitis A in 2008.
- ✓ IDPH followed-up on 426 cases of Salmonella in 2008

disease prevention specialists, in conjunction with the staff epidemiologists at the Iowa Department of Public Health, interview persons with selected conditions or diseases and conduct investigations of disease outbreaks. Disease prevention steps include promoting vaccinations, partner counseling/referral services for sexually transmitted diseases, and disease

education initiatives.

Increases in reported cases of certain infectious diseases are often the result of specific outbreak situations:

- Increases in Hepatitis A cases reported from 1996–1998 were due to outbreaks in Woodbury (1996) and Polk (1997-1998) counties and were related to transmission among methamphetamine users.
- An imported case of measles occurred in 2004 in an Iowa resident returning from India. Two additional cases of measles were traced back to the imported case.
- Iowa experienced large outbreaks of pertussis and mumps cases statewide during the 2004-2006 timeframe.
- The outbreak of rubella in 1999 originated in a Hispanic migrant worker population. Immunization clinics were held in a number of packing plants across the state to contain the outbreak.

Infectious diseases continue to be a concern, and IDPH is working daily to control local outbreaks.

Sexually Transmitted Diseases<sup>1</sup> 2007-2008

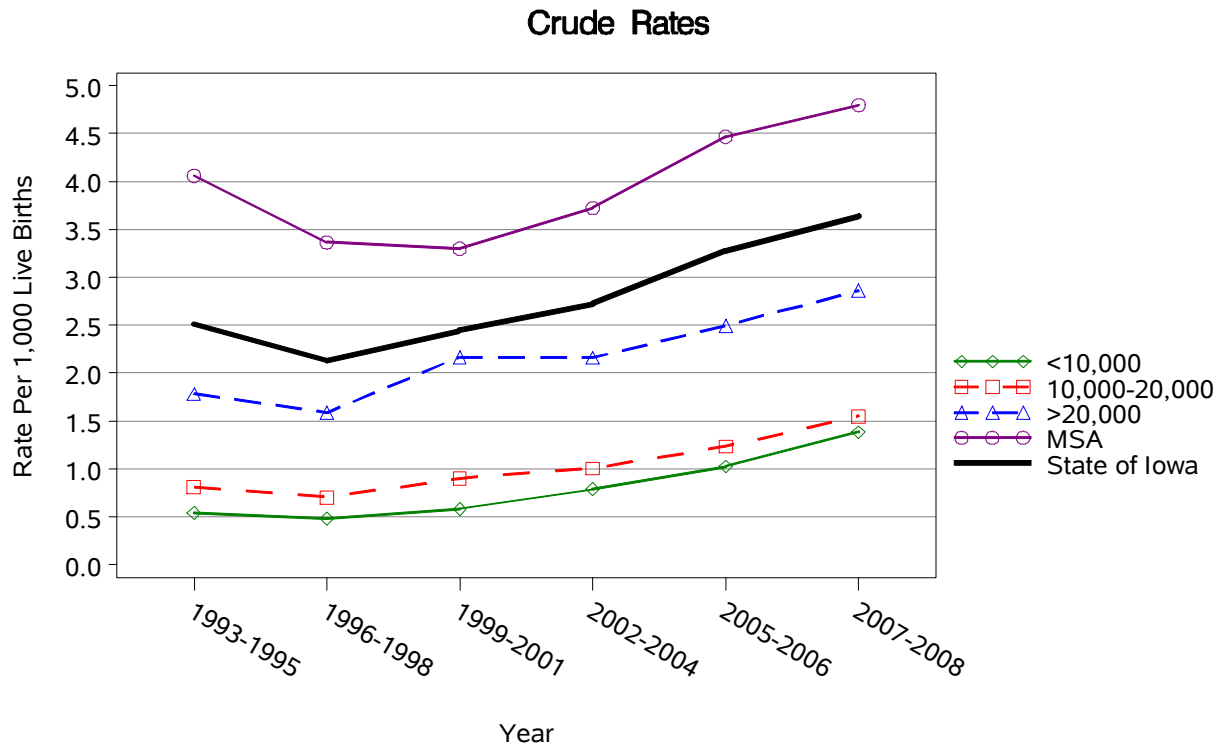
	County	#	Crude Rate <sup>2</sup>	County	#	Crude Rate <sup>2</sup>
Counties with Average Population < 10,000	Adair	24	1.6	Lucas	18	1.0
	Adams	12	1.5	Monona	27	1.5
	Audubon	10	0.8	Monroe	26	1.7
	Clarke	36	2.0	Osceola	8	0.6
	Davis	11	0.6	Palo Alto	25	1.3
	Decatur	38	2.3	Pocahontas	18	1.2
	Fremont	14	0.9	Ringgold	8	0.8
	Greene	25	1.3	Taylor	15	1.2
	Howard	33	1.7	Van Buren	15	1.0
	Humboldt	44	2.3	Wayne	19	1.5
	Ida	27	2.0	Worth	15	1.0
				<b>Total</b>	468	1.4
	Counties with Average Population 10,000 – 20,000	Allamakee	59	2.0	Hardin	49
Appanoose		39	1.5	Iowa	42	1.3
Buena Vista		102	2.6	Jefferson	31	1.0
Butler		27	0.9	Keokuk	24	1.1
Calhoun		29	1.5	Kossuth	28	0.9
Cass		64	2.3	Louisa	51	2.2
Cedar		42	1.2	Lyon	8	0.4
Cherokee		22	0.9	Mitchell	16	0.7
Chickasaw		34	1.4	Montgomery	43	2.0
Clay		85	2.5	O'Brien	20	0.7
Clayton		35	1.0	Page	46	1.5
Crawford		126	3.8	Poweshiek	73	2.0
Delaware		25	0.7	Sac	27	1.3
Dickinson		41	1.2	Shelby	33	1.4
Emmet		38	1.8	Tama	109	3.1
Floyd		44	1.4	Union	54	2.2
Franklin		23	1.1	Winnebago	35	1.6
Hamilton		40	1.3	Wright	39	1.5
Hancock	13	0.6	<b>Total</b>	1,616	1.6	
Counties with Average Population > 20,000	Boone	120	2.3	Lee	224	3.1
	Buchanan	75	1.8	Mahaska	124	2.8
	Carroll	52	1.2	Marion	107	1.6
	Cerro Gordo	234	2.7	Marshall	257	3.3
	Clinton	403	4.1	Muscatine	277	3.3
	Des Moines	465	5.7	Plymouth	66	1.4
	Fayette	82	2.0	Sioux	58	0.9
	Henry	110	2.7	Wapello	219	3.1
	Jackson	87	2.2	Webster	415	5.4
	Jasper	117	1.6	Winneshiek	73	1.7
			<b>Total</b>	3,565	2.9	
MSA Counties	Benton	61	1.2	Linn	1,921	4.6
	Black Hawk	2,010	7.9	Madison	56	1.8
	Bremer	64	1.3	Mills	54	1.8
	Dallas	170	1.5	Polk	4,795	5.7
	Dubuque	729	3.9	Pottawattamie	505	2.8
	Grundy	27	1.1	Scott	2,401	7.3
	Guthrie	15	0.7	Story	632	3.7
	Harrison	30	1.0	Warren	125	1.4
	Johnson	1,312	5.2	Washington	73	1.7
	Jones	74	1.8	Woodbury	1,080	5.3
			<b>Total</b>	16,134	4.8	
<b>State Total</b>		21,783	3.6			

<sup>1</sup>Includes syphilis, gonorrhea, and chlamydia, but not latent cases (infection > 1 year)

<sup>2</sup>Rates per 1,000 population

Source: Disease Prevention Program, Iowa Department of Public Health

## Sexually Transmitted Diseases by County Group 1993-2008



## Selected Infectious Diseases State of Iowa 2000–2008

	Number of Cases Reported								
	2000	2001	2002	2003	2004	2005	2006	2007	2008
<b>AIDS</b>	79	80	75	76	69	78	84	67	65
<b>Campylobacteriosis</b>	499	467	427	458	559	537	449	526	593
<b>Chlamydia</b>	5,994	5,716	6,236	6,462	6,973	7,390	8,386	8,644	9,372
<b>Cryptosporidiosis</b>	77	82	49	122	90	122	231	611	282
<b>E. coli</b>	180	81	122	103	124	108	163	185	223
<b>Giardiasis</b>	420	345	315	277	301	280	303	307	327
<b>Gonorrhea</b>	1,380	1,424	1,495	1,544	1,254	1,606	1,967	1,928	1,700
<b>Hepatitis A</b>	67	41	72	40	50	22	13	49	107
<b>Measles</b>	0	0	0	0	3	0	0	0	0
<b>Mumps</b>	8	1	1	2	2	6	1,964	27	24
<b>Pertussis</b>	67	167	230	182	1066	1106	345	145	232
<b>Rubella</b>	0	1	0	0	0	0	0	0	0
<b>Salmonella</b>	373	339	509	413	435	410	475	478	426
<b>Shigellosis</b>	569	367	122	93	64	103	136	109	213
<b>Syphilis (primary or secondary)</b>	11	5	10	12	6	9	19	21	16
<b>Tuberculosis</b>	40	43	34	40	47	55	40	43	49

Source: Bureau of Infectious Diseases, Iowa Department of Public Health