

Health and Social Behaviors

The health of individuals and their communities is determined by a variety of factors including biologic, environmental, social, and behavioral influences. This section provides an overview of selected surveys and statistics collected in Iowa to track the effects of these various influences on the health of Iowans. Introductions are provided individually for each of the surveys with links to more detailed information on survey methodology and additional data where available. Information on marriages, dissolutions, and crime statistics is included at the end of this section because it characterizes and contrasts the population dynamics that can affect health.

QUESTIONS TO CONSIDER WHEN USING SURVEY RESULTS...

- ✓ What was the method used to conduct the survey, i.e., telephone, mail, personal interview?
- ✓ What was the response rate of those surveyed and what factors might influence who responds and who doesn't?
- ✓ Are the survey respondents representative of and thus generalizable to a particular population?
- ✓ Because a survey provides only estimates based on the sampled population, what are the variability measures of these estimates?
- ✓ Were the survey questions cross-sectional in that they represent attitudes, behaviors, or disease status of different people, or were the same people surveyed repeatedly over time?

Behavioral Risk Factor Surveillance System (BRFSS)

The Behavioral Risk Factor Surveillance System (BRFSS) survey is an ongoing telephone survey that is conducted each year in every state, including Iowa, as well as in the District of Columbia, and in Puerto Rico. It is financially and technically supported by the Centers for Disease Control and Prevention (CDC) and is a scientifically-designed and validated method of collecting information.

The Iowa BRFSS collects health risk behavior information from 3,600 household telephone surveys, and is designed to collect information on nationally agreed upon topics and on additional areas of special interest to Iowa. Because the BRFSS is conducted annually, the prevalence of these behaviors may be followed longitudinally. The risk behaviors of those surveyed (Iowa residents age 18 and over) are major contributions to illness, disability, and premature death.

The goal of the Iowa BRFSS is to provide data to initiate and guide health promotion disease prevention programs. The BRFSS program achieves this goal by:

1. determining state specific prevalence of personal health behaviors related to the leading cause of premature death;
2. developing the capacity of the state health department to conduct credible telephone surveys; and
3. advancing the understanding that health-related behaviors are critical indices of health.

The BRFSS results can help inform health professionals as to health behaviors and beliefs of the general population, and can be used as a measure of the effectiveness of various public health strategies.

BRFSS KEY AREAS...

- ✓ Health Status
- ✓ Health Care Coverage
- ✓ Physical Inactivity
- ✓ Body Weight
- ✓ Smoking
- ✓ Alcohol Consumption
- ✓ Hypertension
- ✓ Cholesterol Awareness
- ✓ Colorectal Cancer Screening
- ✓ Diabetes
- ✓ Adult Immunizations
- ✓ Injury Control
- ✓ Women's Health
- ✓ HIV/AIDS

Iowa Behavioral Risk Factor Surveillance System 2000-2001

	Definition	Iowa		US Median ¹	
		2000 % (%,%) ²	2001 % (%,%)	2000 %	2001 %
Binge drinking	All respondents having five or more alcoholic beverages on one or more occasion in the past month.	**	28.9 (26.7,31.1)	**	27.7
Chronic drinking	All respondents averaging two or more drinks per day in the last month.	**	5.1 (31.1,5.9)	**	5.6
Current smoker	All respondents smoking 100 cigarettes in their lifetime and currently smoking every day or some days.	21.0 (19.6,22.5)	22.2 (20.9,23.6)	23.2	23.2
Diabetes	All respondents ever being diagnosed with diabetes, excluding gestational diabetes.	5.9 (5.1,6.7)	5.8 (5.1,6.5)	6.2	6.5
High blood pressure	All respondents being told by a health professional that they had high blood pressure.	**	23.9 (22.5,25.3)	**	25.6
Cholesterol	All respondents having their cholesterol checked in the past five years.	**	94.5 (93.7,95.3)	**	94.9
High cholesterol	All respondents being told by a health professional that they had high cholesterol.	**	29.2 (27.6,30.9)	**	30.3
No insurance coverage	All respondents who currently did not have any kind of health care coverage.	10.7 (9.6,11.8)	10.1 (9.1,11.1)	11.9	12.9
Mammogram	Female respondents age 40 and older having a mammogram in the past two years.	86.3 (84.4,88.2)	**	87	**
Pap smear	Female respondents with a uterine cervix having a pap smear in the past three years.	91.6 (90.3,93.0)	**	91.6	**
Obesity	All respondents who had a calculated body mass index (BMI) of 30.0 or above.	20.8 (19.4,22.2)	21.6 (20.2,23.0)	20.2	21.1
Overweight	All respondents who had a calculated body mass index (BMI) from 25.0 to 29.9, inclusive.	37.9 (36.2,39.7)	35.4 (33.8,37.1)	36.7	37.2
Sigmoidoscopy/ Colonoscopy	All respondents who ever had a sigmoidoscopy or colonoscopy.	**	44.2 (41.7,46.8)	**	46.5
Tested for HIV	Respondents age 18 to 64 who have ever had a HIV test, excluding for blood donations.	41.8 (38.1,45.4)	41.1 (39.2,42.9)	48.8	46.1
Asthma	All respondents who currently have asthma.	72.6 (67.5,77.6)	70.8 (66.3,75.4)	71.1	68.1
Health Status	All respondents who rate their current health as good, very good, or excellent.	87.6 (86.5,88.7)	87.4 (86.3,88.5)	85.6	85.8

** This question was not asked in Iowa in the given year.

¹ In the US, half of the 50 states fall above this point and half fall below.

² 95% confidence interval for the Iowa estimate %.

Source: BRFSS, Centers for Disease Control and Prevention and the Iowa Department of Public Health.

2002 Iowa Youth Tobacco Survey (IYTS)

The Iowa Youth Tobacco Survey (IYTS) supplies vital information that guides tobacco-use prevention programs. The survey results serve as a guide to help evaluate current efforts to reduce tobacco use among younger Iowans. The Iowa Department of Public Health Division of Tobacco Use Prevention and Control, and the Centers for Disease Control and Prevention in Atlanta, along with many other organizations and school districts

implemented this survey in the spring of 2002. The IYTS used a random sample of 60 schools to participate in the 2002 IYTS: 30 middle schools (grades 6 through 8) and 30 high schools (grades 9 through 12). A multistage sampling design was used. Twenty-seven of the middle schools and 25 of

LEVEL OF PARTICIPATION

Middle School	77%
High School	77%

SELECTED RESULTS...

		Weighted Estimates		
		<u>Males</u>	<u>Females</u>	<u>Total</u>
Respondents who reported using any tobacco products during the past 30 days.	Middle School	12%	10%	11%
	High School	38%	29%	34%
Respondents who reported smoking cigarettes during the past 30 days.	Middle School	6%	7%	7%
	High School	27%	27%	27%
Respondents who reported smoking cigarettes during the past 30 days who indicated they tried to quit two or more times.	Middle School	2%	3%	5%
	High School	6%	8%	14%

the high schools provided data (an 87% school response rate).

Within these schools, all students in the second period classrooms were asked to participate. There were 1,848 middle school students selected to participate and 1,633 (88%) completed a useable questionnaire. There were 1,937 high school students selected to participate and 1,697 (88%) completed a useable questionnaire. The overall response rate, including both schools and students, was 77% for the middle school sample and 77% for the high school sample. The questionnaires were

completed between April and May of 2002.

The weighted data account for the number of students in the classrooms and schools and reduce the impact of nonresponse bias. Since the sample was chosen to represent schools in Iowa, the weighted results estimate Iowa students' tobacco use in grades 6 through 12.

SELECTED RESULTS...

Weighted Estimates by Grade Level

Respondents	6 th	7 th	8 th	
who reported using any tobacco products during the past 30 days	8%	8%	17%	
	9 th	10 th	11 th	12 th
	26%	30%	42%	37%

Iowa Youth Survey

The 2002 Iowa Youth survey was a joint project among the Iowa Department of Public Health Division of Health Promotion, Prevention and Addictive Behaviors; Iowa Department of Human Rights Division of Criminal & Juvenile Justice Planning; Iowa Governor's Office of Drug Control Policy; Iowa Department of Education; Iowa Workforce Development; and The Higher Plain, Inc.

Survey scope. The 2002 IYS is the 10th in a series of youth surveys that have been completed every three years since 1975. The 1999 and 2002 surveys differ from previous years in both the procedures used to implement the survey and the students who were asked to participate. Previous surveys were given to approximately one-third of Iowa's public school districts and a sample of their 6th, 8th, 10th and 12th grade students. Starting with the 1999 IYS, participation was sought from all public school districts and all students in grades 6, 8 and 11, as well as 14-18 year-old students in alternative programs. These changes make it possible to provide youth development-related data for each participating school, as well as for each county in which participating students reside. They also make it more feasible to use IYS results to assess the outcome of community and school youth development programs. The changes do, however, restrict direct comparisons with surveys prior to 1999 to grades 6 and 8, and to the schools that participated in those surveys.

Starting with the 2002 IYS, participation was also sought from all non-public schools in the state, in addition to all of the public school districts. It was believed that by including all Iowa students in the 6th, 8th and 11th grades, the survey results would more accurately reflect the attitudes and perceptions of all Iowa students in those grades, not just those attending public schools. These non-public school data have been included in this report.

Some survey questionnaires were completed in 349 of Iowa's 371 public school districts (94.1%) and in a minimum of 49 of 178 private schools (27.5%) with some combination of students enrolled in the 6th, 8th and/or 11th grades. A total of 96,971 public and private school students across the state completed the IYS, with each county represented by at least 170 students, except Wayne County. Due to procedural errors in obtaining the survey forms and distributing the forms to the student-participants, the data from certain non-public schools were irretrievably commingled with the

Grade	Number Enrolled	Number Completed IYS	Percent Completed IYS
6	40,033	32,163	80.3
8	40,142	32,919	82.0
11	40,127	30,335	75.5

public school data in four public school districts, thus it is not possible to calculate the actual number of public school students and non-public school students who completed surveys, or the exact number of private schools that submitted surveys.

Survey content. The 2002 IYS questionnaire includes questions about the students' behaviors and attitudes/beliefs, as well as their perceptions of their peer, family, school and neighborhood/community environments. Prior research has shown that each of these environments plays a significant role in positive youth development. Selection of specific survey questions was based on a combination of: 1) analysis of data collected in previous Iowa Youth Surveys; 2) a literature review of the established youth development models, especially those that enjoy some acceptance in Iowa; and 3) discussion sessions with youth development professionals (community service providers, school district personnel and academicians).

The general content of the questions included in the 2002 IYS is similar to that of previous surveys. Most of the items are relevant to the constructs on which previous IYS were based. All questions and responses from the 1999 IYS were utilized without modification, and several new questions added. Among the new additions were questions regarding certain prohibited activities on school property, the student's perceived career path upon finishing high school, and job and job seeking skills developed in school.

The appropriateness of any comparison between 1999 and 2002 surveys, and surveys from previous years must be considered on a question-by-question basis. Trend analyses for the most part should be considered exploratory at best. If comparisons are made, the 1999 and 2002 reports may make the state *appear* to be significantly different, for better or worse, from the reports generated by previous surveys. This appearance may be due to differences in question wording between the 1999/2002 reports and all previous reports and the representativeness of the samples rather than to actual changes in Iowa's youth. Further, the 2002 IYS state report contains data from over 2,200 non-public school students who did not participate in the 1999 IYS. These students equate to 2.3% of the usable IYS surveys received, and thus may have some impact on the state level data.

Iowa Youth Survey (IYS) 2002

Substance Use Behaviors	Definition	% ¹	% ¹	% ¹	% ²
		6 th grade	8 th grade	11 th grade	State
Tobacco	Percentage of students who reported smoking cigarettes during the past 30 days.	1	9	23	11
	Percentage of students who reported smoking cigars during the past 30 days.	0	2	10	4
	Percentage of students who reported using smokeless tobacco during the past 30 days.	0	1	8	2
Alcohol	Percentage of students who reported having 1 or more alcoholic drinks during the past 30 days.	5	18	43	23
	Percentage of students who reported having 5 or more alcoholic drinks in a row, within a couple of hours, during the past 30 days.	3	13	36	16
Marijuana	Percentage of students who reported using marijuana during the past 30 days.	0	5	16	8
Inhalants	Percentage of students who reported sniffing glue, breathing the contents of gases or sprays in order to get high during the past 30 days.	1	2	2	1
Methamphetamines	Percentage of students who reported using methamphetamines during the past 30 days.	0	0	2	0
Cocaine	Percentage of students who reported using cocaine during the past 30 days.	0	0	2	1
Amphetamines	Percentage of students who reported using amphetamines (other than methamphetamines) during the past 30 days.	0	1	3	1
Steroid Pills/Shots	Percentage of students who reported taking steroid pills or shots without a doctor's prescription during the past 30 days.	0	1	3	1
Other Illegal Drugs	Percentage of students who reported using any other illegal drug during the past 30 days.	0	1	7	3
Other Behaviors	Percentage of students who spent money gambling in the past 12 months.	19	33	36	28
	Percentage of students who have ever tried to kill themselves.	6	11	15	11
	Percentage of students who have ever been involved in any sexually related behavior that they wish would not have happened.	6	12	28	16

%¹ Unweighted Percentage%² Weighted Percentage

Source: Iowa Dept. of Public Health, Div. of Health Promotion, Prevention, and Addictive Behaviors

Iowa Youth Survey 2002 (continued)

	Definition		% ¹	% ¹	% ¹	% ²
			6 th grade	8 th grade	11 th grade	State
Attitudes about self	I am accepting of those different than me (racially, culturally, socio-economically).	Strongly Agree	57	52	49	53
		Agree	36	41	43	40
		Disagree	5	5	5	5
		Strongly Disagree	2	2	2	2
	I can say "no" when someone wants me to do things I know are wrong or dangerous.	Strongly Agree	77	59	49	61
		Agree	19	33	42	31
Disagree		3	6	7	5	
Strongly Disagree		2	2	2	2	
Violence is the worst way to solve problems	Strongly Agree	63	41	32	45	
	Agree	25	39	42	35	
	Disagree	6	14	20	14	
	Strongly Disagree	5	6	6	6	
It is against my values to have sex as a teenager	Strongly Agree	66	43	19	42	
	Agree	19	29	22	23	
	Disagree	8	18	36	21	
	Strongly Disagree	7	10	23	14	
It is against my values to use alcohol and drugs as a teenager.	Strongly Agree	78	54	25	52	
	Agree	15	27	26	23	
	Disagree	4	13	34	17	
	Strongly Disagree	4	5	15	8	
Attitudes about alcohol	People feel more caring and giving after a few drinks of alcohol.	True/mostly true	11	22	43	26
		False/mostly false	89	78	57	74
	Drinking alcohol makes people more friendly.	True/mostly true	6	17	48	24
		False/mostly false	94	83	52	76
Attitudes about school	It's fun to watch others act silly when they are drinking alcohol.	True/mostly true	20	43	71	45
		False/mostly false	80	57	29	55
	Alcoholic beverages make parties more fun.	True/mostly true	11	27	53	31
		False/mostly false	89	73	47	69
Attitudes about school	There are clear rules about what students can and cannot do.	Strongly Agree	64	42	28	44
		Agree	31	47	57	45
		Disagree	4	8	12	8
		Strongly Disagree	2	3	3	3
Students caught drinking, smoking, or using an illegal drug are not allowed to participate in any extracurricular activity for some time period.	Strongly Agree	80	64	45	63	
	Agree	15	27	41	28	
	Disagree	3	5	9	6	
	Strongly Disagree	3	3	4	4	
If I skipped school at least one of my parents/guardians would be notified.	Strongly Agree	68	51	34	51	
	Agree	24	38	50	38	
	Disagree	4	8	12	8	
	Strongly Disagree	4	3	3	3	

%¹ Unweighted Percentage%² Weighted Percentage

Source: Iowa Dept. of Public Health, Div. of Health Promotion, Prevention, & Addictive Behaviors

Iowa Youth Survey 2002 (continued)

Definition		% ¹	% ¹	% ¹	% ²	
		6 th grade	8 th grade	11 th grade	State	
Attitudes about school (continued)	Students in my school treat each other with respect.	Strongly Agree	28	12	6	15
		Agree	42	39	39	40
		Disagree	23	35	41	33
		Strongly Disagree	7	13	14	11
	I feel safe at school.	Strongly Agree	50	27	16	31
		Agree	38	54	65	53
		Disagree	8	14	14	12
		Strongly Disagree	3	6	5	5
	There is at least one adult at school who I could go to for help with a problem.	Strongly Agree	68	46	32	48
		Agree	25	41	52	40
		Disagree	4	8	11	8
		Strongly Disagree	3	5	5	4
Attitudes about family	In my home there are clear rules about what I can and cannot do.	Strongly Agree	65	47	35	48
		Agree	30	43	51	41
		Disagree	4	8	12	8
		Strongly Disagree	1	2	3	2
	I have a happy home.	Strongly Agree	60	44	34	45
		Agree	32	43	50	42
		Disagree	6	10	12	10
		Strongly Disagree	2	3	4	3
	There are people living in my home who have a serious alcohol or drug problem.	Strongly Agree	10	8	6	8
		Agree	8	9	11	9
		Disagree	18	24	27	23
		Strongly Disagree	64	59	57	60
I can get help and support when I need it from someone in my home.	Strongly Agree	69	49	34	50	
	Agree	24	39	49	38	
	Disagree	4	8	11	8	
	Strongly Disagree	3	4	5	4	
A parent/guardian knows where I am and who I am with, especially in the evening and on weekends.	Never	11	9	8	9	
	Sometimes	10	17	25	17	
	Often	12	21	31	22	
	Always	67	53	37	52	
Attitudes about community	My neighborhood is a safe place to live.	Strongly Agree	57	46	42	48
		Agree	34	44	50	43
		Disagree	7	7	6	7
		Strongly Disagree	3	3	2	3

%¹ Unweighted Percentage
 %² Weighted Percentage

Source: Iowa Dept. of Public Health, Div. of Health Promotion, Prevention, and Addictive Behaviors

Iowa Youth Survey 2002 (continued)

Definition		% ¹	% ¹	% ¹	% ²	
		6 th grade	8 th grade	11 th grade	State	
Attitudes about community (continued)	Adults in my neighborhood or community help me when I need help.	Strongly Agree	46	26	12	27
		Agree	36	45	48	43
		Disagree	12	21	28	21
		Strongly Disagree	5	8	11	8
In your neighborhood or community how difficult do you think it would be for a kid your age to get...						
...cigarettes	Very hard	52	26	7	27	
	Hard	20	26	12	19	
	Easy	10	25	38	25	
	Very Easy	5	12	37	19	
	Don't know	13	11	6	10	
...alcoholic beverages (beer, wine, liquor).	Very hard	50	23	7	26	
	Hard	21	23	11	18	
	Easy	12	29	40	28	
	Very Easy	5	15	36	19	
	Don't know	12	10	5	9	
...marijuana (pot, grass, hash, bud, weed).	Very hard	68	43	13	41	
	Hard	12	22	19	18	
	Easy	5	14	33	18	
	Very Easy	3	8	22	12	
	Don't know	13	13	12	13	
...methamphetamine s (crack, ice).	Very hard	70	51	24	47	
	Hard	11	21	29	21	
	Easy	3	8	17	9	
	Very Easy	2	5	9	5	
	Don't know	14	16	21	17	
...amphetamines other than methamphetamines (like stimulants, uppers, speed).	Very hard	70	51	25	48	
	Hard	11	21	28	20	
	Easy	3	8	16	9	
	Very Easy	2	5	8	5	
	Don't know	14	16	22	18	
... any other illegal drug (cocaine, etc.).	Very hard	70	50	26	48	
	Hard	11	21	27	20	
	Easy	4	9	17	10	
	Very Easy	2	5	9	5	
	Don't know	13	15	21	17	
...a handgun.	Very hard	59	41	25	41	
	Hard	16	25	28	23	
	Easy	7	13	17	13	
	Very Easy	4	7	9	7	
	Don't know	14	15	22	17	

%¹ Unweighted Percentage
 %² Weighted Percentage

Source: Iowa Dept. of Public Health, Div. of Health Promotion, Prevention, and Addictive Behaviors

Substance Abuse Treatment

Substance abuse treatment is provided to all 99 counties in Iowa using funding from the Alcohol and Drug Abuse and Mental Health Services block grant, state substance abuse appropriations, and Medicaid. Iowa operates under a managed care system which is currently administered by Magellan Behavioral Care of Iowa (MBCI). MBCI contracts with a total of 64 service providers in 22 service areas as represented on the map and listing on the next page. The 64 service providers include 32 who receive funding from both IDPH and Medicaid, and 32 who are funded through Medicaid only. Services are available to all Iowans regardless of their ability to pay or financial status through a sliding-fee schedule.

The tables on the following pages represent all admissions to substance abuse treatment programs regardless of source of funding for that specific client. The data for each county is divided by adult (18 and over) and adolescent (17 and under), and by primary substance of abuse.

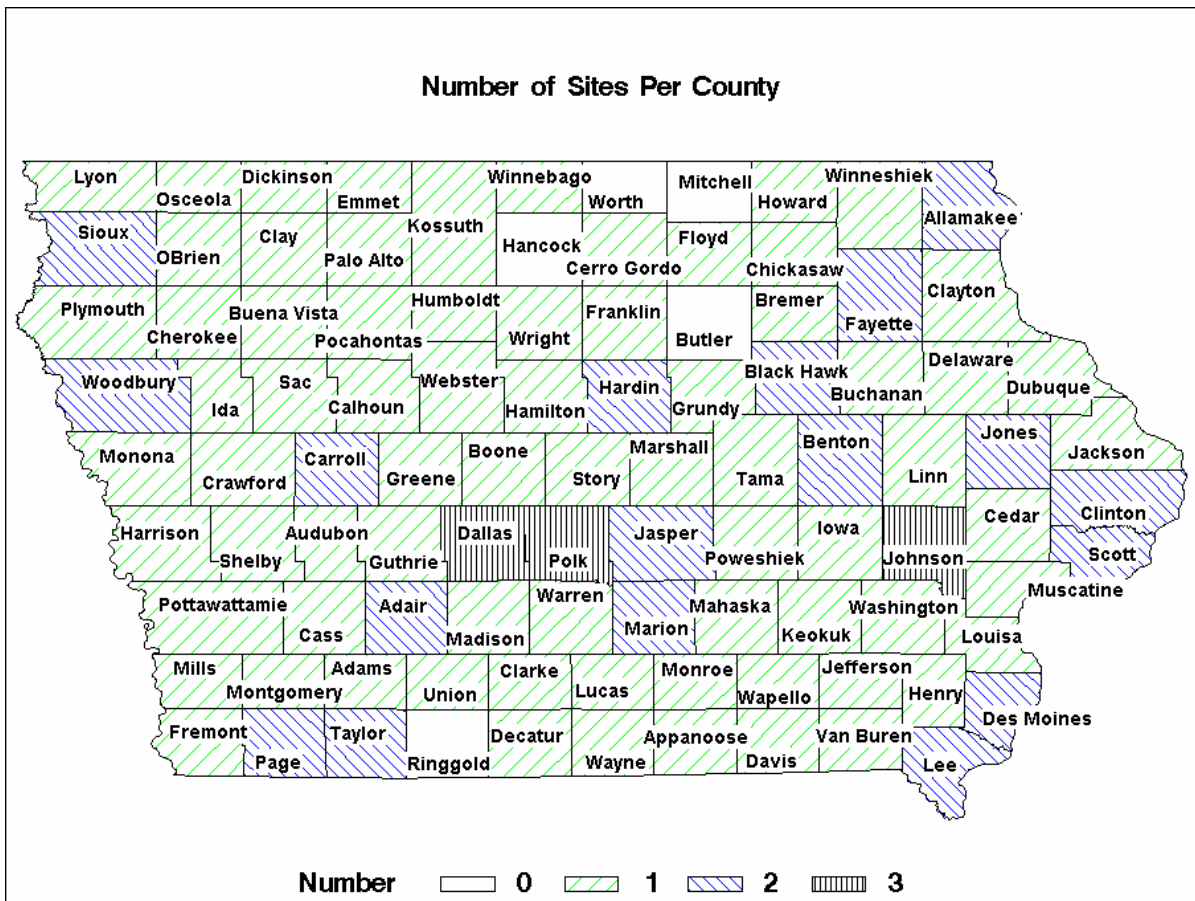
The reporting period was for calendar years 1998, 1999, 2000, 2001, and 2002. The numbers reflect those identifying a county of residence in Iowa. Those identifying their residence outside of Iowa were not counted. The count is unduplicated with the following exceptions: a client was counted twice if their primary substance of abuse changed between admissions or if the client's age changed between admissions.

STATE OF IOWA ADMISSIONS TOTALS FOR SUBSTANCE ABUSE TREATMENT...

	<u>Alcohol</u>	<u>Marijuana</u>	<u>Other</u>
1998	12,994	5,159	5,175
1999	14,102	5,433	5,129
2000	14,192	6,149	5,690
2001	12,724	4,914	5,077
2002	11,538	5,180	6,227

Local Sites for Substance Abuse Treatment

Adel	Corning	Guthrie Center	Mason City	Sergeant Bluff
Albia	Corydon	Hampton	Milford	Sheldon
Algona	Council Bluffs	Harlan	Mitchellville	Shenandoah
Ames	Cresco	Hull	Monroe	Sibley
Anamosa	Creston	Humboldt	Monticello	Sidney
Ankeny	Davenport	Ida Grove	Mt. Pleasant	Sigourney
Atlantic	Decorah	Independence	Muscatine	Sioux City
Audubon	Denison	Indianola	New Hampton	Spencer
Bedford	Des Moines	Iowa City	Newton	Storm Lake
Belle Plain	DeWitt	Iowa Falls	Oakdale	Tipton
Bettendorf	Dubuque	Jefferson	Oelwein	Toledo
Boone	Eagle Grove	Keokuk	Orange City	Vinton
Bloomfield	Eldora	Keosauqua	Orient	Wapello
Burlington	Elkader	Knoxville	Osceola	Washington
Carroll	Emmetsburg	Lamoni	Oskaloosa	Waterloo
Cedar Falls	Estherville	LeMars	Ottumwa	Waukon
Cedar Rapids	Fairfield	Lenox	Pella	Waverly
Centerville	Forest City	Logan	Perry	Webster City
Chariton	Fort Dodge	Manning	Pocahontas	West Burlington
Charles City	Ft. Madison	Manchester	Postville	West Union
Cherokee	Glenwood	Mapleton	Red Oak	Winterset
Clarinda	Greenfield	Maquoketa	Rock Rapids	Woodward
Clinton	Grinnell	Marengo	Rockwell City	
Coralville	Grundy Center	Marshalltown	Sac City	



Source: Iowa Department of Public Health, Div. of Promotion, Prevention, and Addictive Behaviors

Alcohol Admissions: Adult 1998-2002

	County	#	Crude ¹ (Rank ²)	County	#	Crude ¹ (Rank ²)
Counties with Average Population < 10,000	Adair	140	34.2 (45)	Lucas	118	25.0 (79)
	Adams	93	41.8 (25)	Monroe	174	43.6 (22)
	Audubon	109	32.1 (54)	Osceola	68	19.5 (93)
	Clarke	225	49.9 (16)	Pocahontas	140	32.4 (52)
	Davis	101	23.6 (84)	Ringgold	58	21.4 (90)
	Decatur	105	24.3 (82)	Taylor	98	28.2 (66)
	Fremont	70	17.7 (96)	Van Buren	111	28.5 (64)
	Howard	255	51.5 (15)	Wayne	88	26.2 (74)
	Ida	119	30.5 (59)	Worth	161	41.0 (28)
				Total	2,233	32.1
Counties with Average Population 10,000 to 20,000	Allamakee	343	47.0 (18)	Humboldt	132	25.5 (78)
	Appanoose	441	64.7 (04)	Iowa	310	39.6 (29)
	Butler	187	24.5 (80)	Jefferson	359	44.3 (21)
	Calhoun	184	33.2 (48)	Keokuk	200	35.1 (41)
	Cass	346	47.5 (17)	Kossuth	220	25.8 (76)
	Cedar	270	29.7 (62)	Louisa	141	23.1 (85)
	Cherokee	208	32.0 (55)	Lyon	182	30.9 (57)
	Chickasaw	190	29.0 (63)	Madison	195	27.7 (69)
	Clay	304	35.1 (42)	Mills	127	17.5 (97)
	Clayton	254	27.2 (73)	Mitchell	100	18.5 (94)
	Crawford	285	33.7 (46)	Monona	181	36.3 (38)
	Delaware	362	39.4 (31)	Montgomery	253	43.3 (23)
	Dickinson	339	41.3 (26)	O'Brien	156	20.7 (92)
	Emmet	155	28.2 (67)	Page	324	38.2 (35)
	Floyd	318	37.8 (36)	Palo Alto	199	39.4 (30)
	Franklin	124	23.1 (86)	Poweshiek	243	25.8 (77)
	Greene	155	30.1 (61)	Sac	141	24.5 (81)
	Grundy	112	18.1 (95)	Shelby	145	22.1 (88)
Guthrie	221	39.0 (34)	Tama	503	55.7 (10)	
Hamilton	253	31.0 (56)	Union	341	55.6 (11)	
Hancock	167	27.8 (68)	Winnebago	196	33.6 (47)	
Hardin	329	35.2 (40)	Wright	195	27.3 (72)	
Harrison	126	16.2 (98)	Total	10,516	33.2	
Counties with Average Population > 20,000	Benton	443	34.8 (43)	Jones	353	34.8 (44)
	Boone	400	30.6 (58)	Lee	625	33.0 (49)
	Bremer	458	39.2 (32)	Mahaska	436	39.1 (33)
	Buchanan	441	41.9 (24)	Marion	382	23.8 (83)
	Buena Vista	418	41.0 (27)	Marshall	637	32.4 (53)
	Carroll	397	37.1 (37)	Muscatine	1,091	52.3 (14)
	Cerro Gordo	1,436	62.1 (06)	Plymouth	403	32.6 (51)
	Clinton	1,550	61.9 (07)	Sioux	346	21.8 (89)
	Des Moines	467	22.1 (87)	Story	1,104	27.7 (70)
	Fayette	962	87.7 (01)	Wapello	1,263	70.2 (03)
	Henry	278	27.4 (71)	Washington	220	21.2 (91)
	Jackson	367	36.3 (39)	Webster	1,047	52.3 (13)
	Jasper	567	30.5 (60)	Winneshiek	497	46.6 (19)
				Total	16,588	40.3
MSA Counties	Black Hawk	3,712	58.1 (08)	Polk	6,196	33.0 (50)
	Dallas	581	28.3 (65)	Pottawattamie	1,132	25.9 (75)
	Dubuque	2,874	64.5 (05)	Scott	5,889	74.2 (02)
	Johnson	3,206	57.7 (09)	Warren	269	13.2 (99)
	Linn	5,027	52.5 (12)	Woodbury	2,340	45.2 (20)
				Total	31,226	47.1
State Totals		60,563	41.4			

¹Rates per 10,000 population²Rank among 99 Iowa counties

Source: Iowa Department of Public Health, Div. of Health
Promotion, Prevention, and Addictive Behaviors

Alcohol Admissions: Adolescent 1998-2002

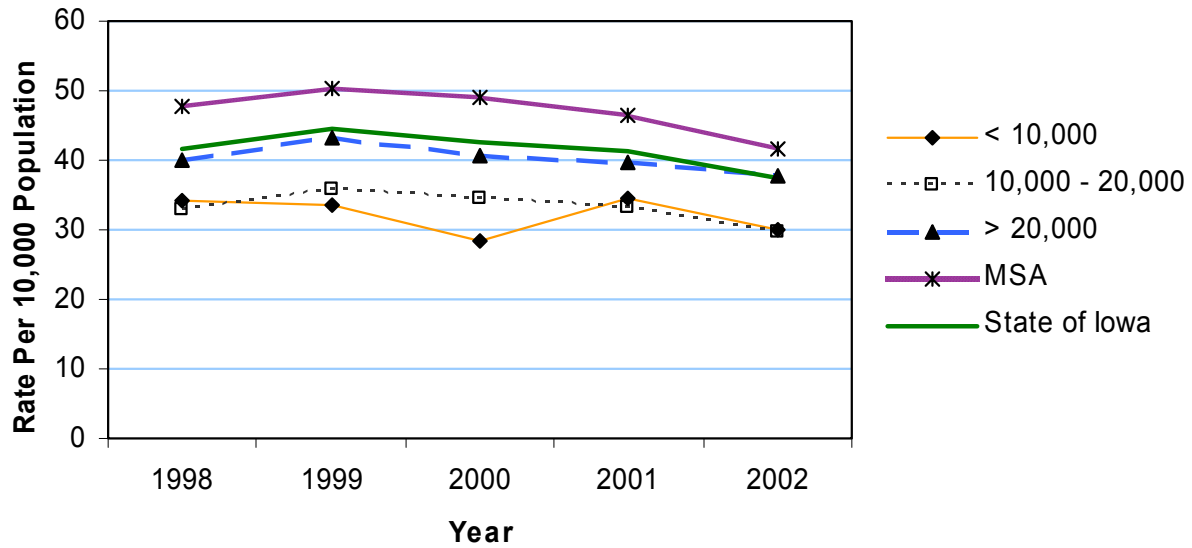
	County	#	Crude ¹	County	#	Crude ¹
Counties with Average Population < 10,000	Adair	32	7.8	Lucas	35	7.4
	Adams	6	2.7	Monroe	9	2.3
	Audubon	8	2.4	Osceola	29	8.3
	Clarke	9	2.0	Pocahontas	8	1.9
	Davis	12	2.8	Ringgold	8	3.0
	Decatur	7	1.6	Taylor	17	4.9
	Fremont	*	*	Van Buren	7	1.8
	Howard	50	10.1	Wayne	9	2.7
	Ida	6	1.5	Worth	11	2.8
				Total	264	3.8
	Counties with Average Population 10,000 to 20,000	Allamakee	37	5.1	Humboldt	7
Appanoose		38	5.6	Iowa	39	5.0
Butler		36	4.7	Jefferson	44	5.4
Calhoun		5	0.9	Keokuk	27	4.7
Cass		35	4.8	Kossuth	21	2.5
Cedar		25	2.7	Louisa	12	2.0
Cherokee		17	2.6	Lyon	56	9.5
Chickasaw		22	3.4	Madison	21	3.0
Clay		37	4.3	Mills	14	1.9
Clayton		26	2.8	Mitchell	12	2.2
Crawford		23	2.7	Monona	10	2.0
Delaware		98	10.7	Montgomery	15	2.6
Dickinson		49	6.0	O'Brien	33	4.4
Emmet		15	2.7	Page	28	3.3
Floyd		62	7.4	Palo Alto	12	2.4
Franklin		15	2.8	Poweshiek	13	1.4
Greene		24	4.7	Sac	14	2.4
Grundy		20	3.2	Shelby	19	2.9
Guthrie		19	3.4	Tama	42	4.7
Hamilton		17	2.1	Union	43	7.0
Hancock	12	2.0	Winnebago	11	1.9	
Hardin	25	2.7	Wright	21	2.9	
Harrison	10	1.3	Total	1,181	3.7	
Counties with Average Population > 20,000	Benton	27	2.1	Jones	37	3.6
	Boone	211	16.1	Lee	73	3.9
	Bremer	71	6.1	Mahaska	25	2.2
	Buchanan	40	3.8	Marion	36	2.2
	Buena Vista	52	5.1	Marshall	50	2.5
	Carroll	40	3.7	Muscatine	68	3.3
	Cerro Gordo	100	4.3	Plymouth	27	2.2
	Clinton	88	3.5	Sioux	68	4.3
	Des Moines	40	1.9	Story	148	3.7
	Fayette	71	6.5	Wapello	92	5.1
	Henry	30	3.0	Washington	21	2.0
	Jackson	47	4.6	Webster	84	4.2
	Jasper	59	3.2	Winneshiek	59	5.5
				Total	1,664	4.0
MSA Counties	Black Hawk	196	3.1	Polk	415	2.2
	Dallas	51	2.5	Pottawattamie	80	1.8
	Dubuque	246	5.5	Scott	320	4.0
	Johnson	133	2.4	Warren	39	1.9
	Linn	271	2.8	Woodbury	127	2.5
			Total	1,878	2.8	
State Totals		4,987	3.4			

¹Rates per 10,000 population

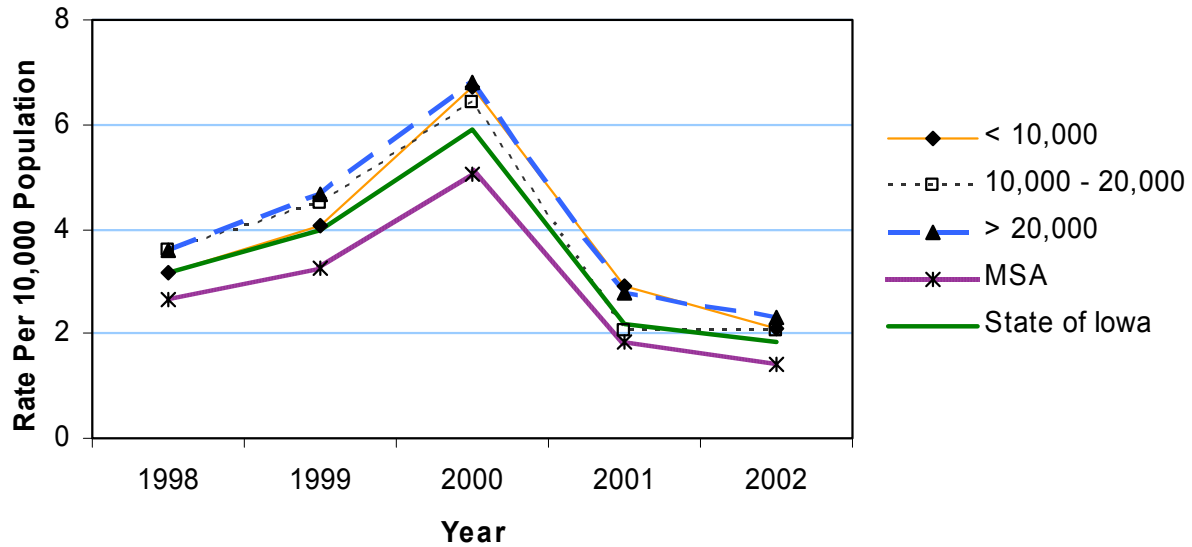
Source: Iowa Department of Public Health, Div. of Health Promotion, Prevention, and Addictive Behaviors

Alcohol Admissions 1998-2002

Adult Crude Rates



Adolescent Crude Rates



Marijuana Admissions: Adult 1998-2002

	County			County		
	County	#	Crude ¹	County	#	Crude ¹
Counties with Average Population < 10,000	Adair	41	10.0	Lucas	53	11.2
	Adams	20	9.0	Monroe	58	14.5
	Audubon	24	7.1	Osceola	8	2.3
	Clarke	62	13.8	Pocahontas	23	5.3
	Davis	28	6.6	Ringgold	*	*
	Decatur	37	8.6	Taylor	31	8.9
	Fremont	33	8.3	Van Buren	16	4.
	Howard	19	3.8	Wayne	22	6.5
	Ida	12	3.1	Worth	26	6.6
				Total	517	7.4
Counties with Average Population 10,000 to 20,000	Allamakee	28	3.8	Humboldt	21	4.1
	Appanoose	156	22.9	Iowa	74	9.4
	Butler	78	10.2	Jefferson	78	9.6
	Calhoun	31	5.6	Keokuk	44	7.7
	Cass	110	15.1	Kossuth	93	10.9
	Cedar	45	4.9	Louisa	35	5.7
	Cherokee	53	8.2	Lyon	19	3.2
	Chickasaw	55	8.4	Madison	81	11.5
	Clay	69	8.0	Mills	43	5.9
	Clayton	33	3.5	Mitchell	20	3.7
	Crawford	60	7.1	Monona	42	8.4
	Delaware	89	9.7	Montgomery	81	13.9
	Dickinson	57	6.9	O'Brien	36	4.8
	Emmet	48	8.7	Page	133	15.7
	Floyd	79	9.4	Palo Alto	25	5.0
	Franklin	26	4.8	Poweshiek	79	8.4
	Greene	51	9.9	Sac	38	6.6
	Grundy	15	2.4	Shelby	54	8.2
	Guthrie	71	12.5	Tama	75	8.3
	Hamilton	51	6.2	Union	90	14.7
Hancock	59	9.8	Winnebago	39	6.7	
Hardin	55	5.9	Wright	46	6.4	
Harrison	36	4.6	Total	2,601	8.2	
Counties with Average Population > 20,000	Benton	109	8.6	Jones	85	8.4
	Boone	97	7.4	Lee	283	15.0
	Bremer	111	9.5	Mahaska	171	15.3
	Buchanan	120	11.4	Marion	105	6.5
	Buena Vista	76	7.5	Marshall	227	11.5
	Carroll	95	8.9	Muscatine	248	11.9
	Cerro Gordo	613	26.5	Plymouth	71	5.7
	Clinton	300	12.0	Sioux	130	8.2
	Des Moines	207	9.8	Story	287	7.2
	Fayette	144	13.1	Wapello	570	31.7
	Henry	115	11.3	Washington	79	7.6
	Jackson	69	6.8	Webster	338	16.9
	Jasper	249	13.4	Winneshiek	62	5.8
				Total	4,961	12.0
MSA Counties	Black Hawk	1,149	18.0	Polk	2,881	15.4
	Dallas	154	7.5	Pottawattamie	483	11.0
	Dubuque	832	18.7	Scott	1,242	15.7
	Johnson	658	11.8	Warren	115	5.7
	Linn	1,542	16.1	Woodbury	830	16.0
State Totals		17,965	12.3	Total	9,886	14.9

¹Rates per 10,000 population

Source: Iowa Dept. of Public Health, Div. of Health Promotion, Prevention, and Addictive Behaviors

Marijuana Admissions: Adolescent 1998-2002

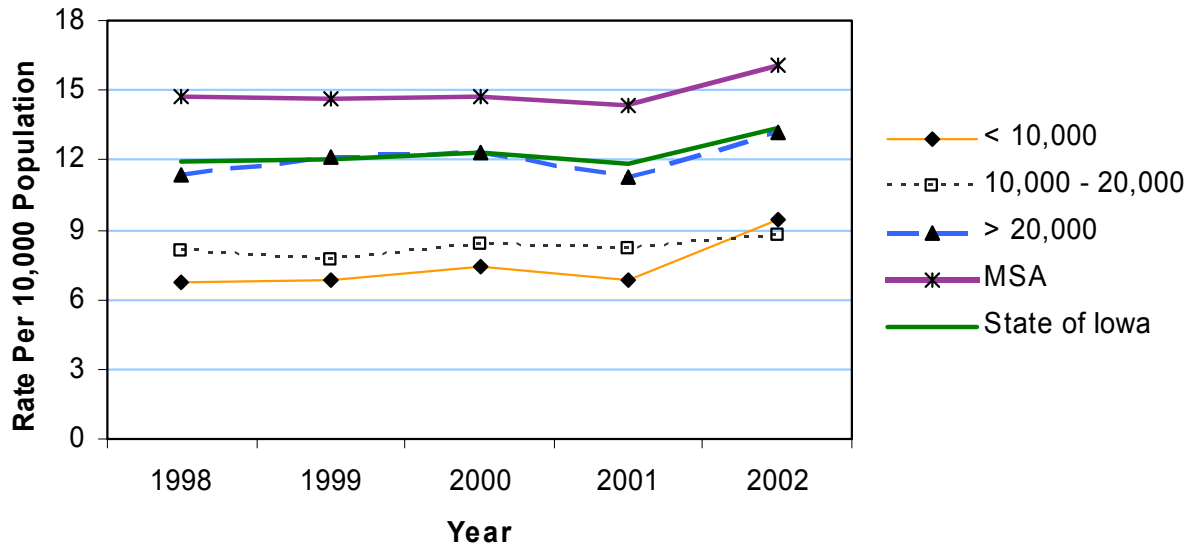
	Counties with Average Population < 10,000			Counties with Average Population 10,000 to 20,000			Counties with Average Population > 20,000			MSA Counties		
	County	#	Crude ¹	County	#	Crude ¹	County	#	Crude ¹	County	#	Crude ¹
Counties with Average Population < 10,000	Adair	6	1.5	Lucas	27	5.7						
	Adams	*	*	Monroe	12	3.0						
	Audubon	*	*	Osceola	17	4.9						
	Clarke	19	4.2	Pocahontas	9	2.1						
	Davis	8	1.9	Ringgold	*	*						
	Decatur	12	2.8	Taylor	14	4.0						
	Fremont	*	*	Van Buren	11	2.8						
	Howard	12	2.4	Wayne	11	3.3						
	Ida	*	*	Worth	11	2.8						
				Total	184	2.6						
Counties with Average Population 10,000 to 20,000	Allamakee	14	1.9	Humboldt	6	1.2						
	Appanoose	43	6.3	Iowa	26	3.3						
	Butler	35	4.6	Jefferson	56	6.9						
	Calhoun	8	1.4	Keokuk	18	3.2						
	Cass	31	4.3	Kossuth	18	2.1						
	Cedar	47	5.2	Louisa	15	2.5						
	Cherokee	20	3.1	Lyon	20	3.4						
	Chickasaw	34	5.2	Madison	45	6.4						
	Clay	38	4.4	Mills	21	2.9						
	Clayton	9	1.0	Mitchell	12	2.2						
	Crawford	15	1.8	Monona	17	3.4						
	Delaware	34	3.7	Montgomery	29	5.0						
	Dickinson	45	5.5	O'Brien	20	2.6						
	Emmet	18	3.3	Page	16	1.9						
	Floyd	33	3.9	Palo Alto	*	*						
	Franklin	25	4.7	Poweshiek	22	2.3						
	Greene	39	7.6	Sac	8	1.4						
	Grundy	12	1.9	Shelby	11	1.7						
	Guthrie	19	3.4	Tama	24	2.7						
	Hamilton	15	1.8	Union	29	4.7						
Hancock	29	4.8	Winnebago	8	1.4							
Hardin	28	3.0	Wright	22	3.1							
Harrison	28	3.6	Total	1,065	3.4							
Counties with Average Population > 20,000	Benton	28	2.2	Jones	51	5.0						
	Boone	116	8.9	Lee	96	5.1						
	Bremer	149	12.8	Mahaska	49	4.4						
	Buchanan	54	5.1	Marion	51	3.2						
	Buena Vista	24	2.4	Marshall	140	7.1						
	Carroll	23	2.1	Muscatine	201	9.6						
	Cerro Gordo	266	11.5	Plymouth	26	2.1						
	Clinton	223	8.9	Sioux	24	1.5						
	Des Moines	115	5.5	Story	254	6.4						
	Fayette	38	3.5	Wapello	181	10.1						
	Henry	72	7.1	Washington	37	3.6						
	Jackson	53	5.2	Webster	77	3.8						
	Jasper	121	6.5	Winneshiek	23	2.2						
				Total	2,492	6.0						
MSA Counties	Black Hawk	510	8.0	Polk	1,615	8.6						
	Dallas	100	4.9	Pottawattamie	162	3.7						
	Dubuque	457	10.3	Scott	810	10.2						
	Johnson	285	5.1	Warren	98	4.8						
	Linn	720	7.5	Woodbury	372	7.2						
				Total	5,129	7.7						
State Totals		8,870	6.1									

¹Rates per 10,000 population

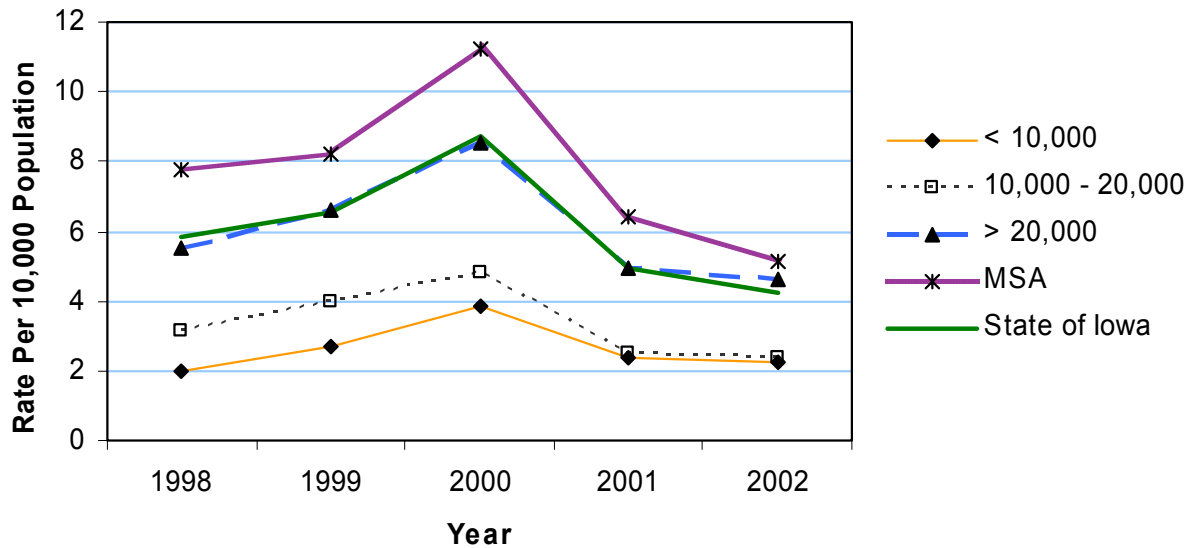
Source: Iowa Dept. of Public Health, Div. of Health Promotion, Prevention, and Addictive Behaviors

Marijuana Admissions 1998-2002

Adult Crude Rates



Adolescent Crude Rates



Other Admissions: Adult 1998-2002

	Counties with Average Population < 10,000			Counties with Average Population 10,000 to 20,000			Counties with Average Population > 20,000			MSA Counties		
	County	#	Crude ¹ (Rank ²)	County	#	Crude ¹ (Rank ²)	County	#	Crude ¹ (Rank ²)	County	#	Crude ¹ (Rank ²)
Counties with Average Population < 10,000	Adair	70	17.1 (19)	Lucas	146	30.9 (03)	Lucas	146	30.9 (03)	Polk	6,909	36.8 (01)
	Adams	28	12.6 (34)	Monroe	58	14.5 (26)	Monroe	58	14.5 (26)	Pottawattamie	1,095	25.0 (10)
	Audubon	27	7.9 (59)	Osceola	17	4.9 (84)	Osceola	17	4.9 (84)	Scott	2,400	30.2 (04)
	Clarke	144	32.0 (02)	Pocahontas	29	6.7 (74)	Pocahontas	29	6.7 (74)	Warren	255	12.5 (35)
	Davis	30	7.0 (71)	Ringgold	17	6.3 (78)	Ringgold	17	6.3 (78)	Woodbury	1,521	29.4 (06)
	Decatur	89	20.6 (15)	Taylor	30	8.6 (53)	Taylor	30	8.6 (53)	Total	16,764	25.3
	Fremont	31	7.8 (62)	Van Buren	11	2.8 (92)	Van Buren	11	2.8 (92)			
	Howard	11	2.2 (98)	Wayne	62	18.4 (17)	Wayne	62	18.4 (17)			
	Ida	31	7.9 (60)	Worth	41	10.4 (46)	Worth	41	10.4 (46)			
				Total	872	12.5	Total	872	12.5			
Counties with Average Population 10,000 to 20,000	Allamakee	19	2.6 (95)	Humboldt	14	2.7 (93)	Humboldt	14	2.7 (93)			
	Appanoose	108	15.8 (22)	Iowa	67	8.6 (54)	Iowa	67	8.6 (54)			
	Butler	73	9.6 (51)	Jefferson	99	12.2 (38)	Jefferson	99	12.2 (38)			
	Calhoun	41	7.4 (69)	Keokuk	40	7.0 (70)	Keokuk	40	7.0 (70)			
	Cass	124	17.0 (20)	Kossuth	49	5.7 (80)	Kossuth	49	5.7 (80)			
	Cedar	32	3.5 (90)	Louisa	42	6.9 (72)	Louisa	42	6.9 (72)			
	Cherokee	89	13.7 (30)	Lyon	13	2.2 (99)	Lyon	13	2.2 (99)			
	Chickasaw	50	7.6 (67)	Madison	103	14.6 (25)	Madison	103	14.6 (25)			
	Clay	98	11.3 (44)	Mills	72	9.9 (48)	Mills	72	9.9 (48)			
	Clayton	21	2.3 (96)	Mitchell	12	2.2 (97)	Mitchell	12	2.2 (97)			
	Crawford	151	17.8 (18)	Monona	73	14.7 (24)	Monona	73	14.7 (24)			
	Delaware	29	3.2 (91)	Montgomery	76	13.0 (33)	Montgomery	76	13.0 (33)			
	Dickinson	63	7.7 (65)	O'Brien	46	6.1 (79)	O'Brien	46	6.1 (79)			
	Emmet	20	3.6 (88)	Page	199	23.5 (12)	Page	199	23.5 (12)			
	Floyd	83	9.9 (50)	Palo Alto	25	5.0 (83)	Palo Alto	25	5.0 (83)			
	Franklin	35	6.5 (76)	Poweshiek	117	12.4 (36)	Poweshiek	117	12.4 (36)			
	Greene	67	13.0 (32)	Sac	49	8.5 (55)	Sac	49	8.5 (55)			
	Grundy	23	3.7 (87)	Shelby	79	12.0 (40)	Shelby	79	12.0 (40)			
	Guthrie	109	19.2 (16)	Tama	69	7.6 (66)	Tama	69	7.6 (66)			
	Hamilton	54	6.6 (75)	Union	164	26.7 (09)	Union	164	26.7 (09)			
Hancock	47	7.8 (61)	Winnebago	48	8.2 (58)	Winnebago	48	8.2 (58)				
Hardin	73	7.8 (63)	Wright	88	12.3 (37)	Wright	88	12.3 (37)				
Harrison	71	9.1 (52)	Total	3,024	9.5	Total	3,024	9.5				
Counties with Average Population > 20,000	Benton	46	3.6 (89)	Jones	49	4.8 (86)	Jones	49	4.8 (86)			
	Boone	143	10.9 (45)	Lee	160	8.5 (56)	Lee	160	8.5 (56)			
	Bremer	89	7.6 (68)	Mahaska	182	16.3 (21)	Mahaska	182	16.3 (21)			
	Buchanan	122	11.6 (43)	Marion	228	14.2 (28)	Marion	228	14.2 (28)			
	Buena Vista	54	5.3 (82)	Marshall	450	22.9 (13)	Marshall	450	22.9 (13)			
	Carroll	106	9.9 (49)	Muscatine	319	15.3 (23)	Muscatine	319	15.3 (23)			
	Cerro Gordo	697	30.2 (05)	Plymouth	84	6.8 (73)	Plymouth	84	6.8 (73)			
	Clinton	291	11.6 (42)	Sioux	77	4.9 (85)	Sioux	77	4.9 (85)			
	Des Moines	291	13.8 (29)	Story	307	7.7 (64)	Story	307	7.7 (64)			
	Fayette	145	13.2 (31)	Wapello	521	29.0 (08)	Wapello	521	29.0 (08)			
	Henry	66	6.5 (77)	Washington	57	5.5 (81)	Washington	57	5.5 (81)			
	Jackson	84	8.3 (57)	Webster	476	23.8 (11)	Webster	476	23.8 (11)			
	Jasper	411	22.1 (14)	Winneshiek	28	2.6 (94)	Winneshiek	28	2.6 (94)			
			Total	5,483	13.3	Total	5,483	13.3				
MSA Counties	Black Hawk	1,861	29.1 (07)									
	Dallas	241	11.7 (41)									
	Dubuque	541	12.1 (39)									
	Johnson	555	10.0 (47)									
	Linn	1,386	14.5 (27)									
State Totals		26,143	17.9									

¹Rates per 10,000 population
²Rank among 99 Iowa counties

Source: Iowa Dept. of Public Health, Div. of Health Promotion, Prevention, and Addictive Behaviors

Other Admissions: Adolescent 1998-2002

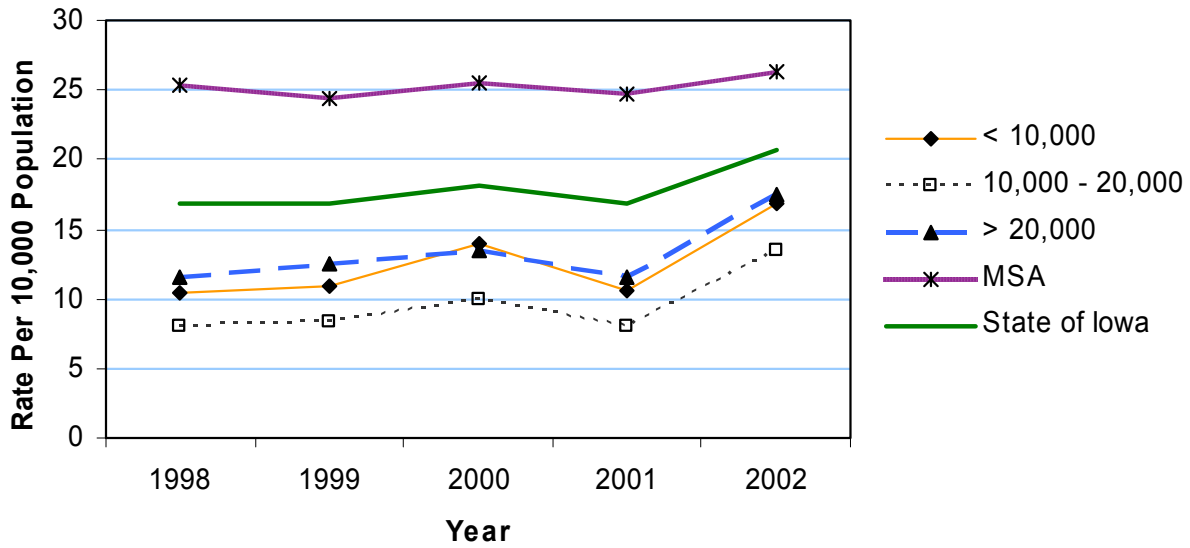
	County			County		
	County	#	Crude ¹	County	#	Crude ¹
Counties with Average Population < 10,000	Adair	*	*	Lucas	7	1.5
	Adams	*	*	Monroe	*	*
	Audubon	*	*	Osceola	*	*
	Clarke	6	1.3	Pocahontas	*	*
	Davis	*	*	Ringgold	*	*
	Decatur	*	*	Taylor	*	*
	Fremont	*	*	Van Buren	*	*
	Howard	*	*	Wayne	*	*
	Ida	*	*	Worth	*	*
				Total	46	0.7
Counties with Average Population 10,000 to 20,000	Allamakee	*	*	Humboldt	*	*
	Appanoose	8	1.2	Iowa	*	*
	Butler	*	*	Jefferson	8	1.0
	Calhoun	*	*	Keokuk	*	*
	Cass	10	1.4	Kossuth	*	*
	Cedar	5	0.5	Louisa	5	0.8
	Cherokee	*	*	Lyon	*	*
	Chickasaw	*	*	Madison	10	1.4
	Clay	5	0.6	Mills	*	*
	Clayton	*	*	Mitchell	*	*
	Crawford	9	1.1	Monona	5	1.0
	Delaware	9	1.0	Montgomery	5	0.9
	Dickinson	*	*	O'Brien	*	*
	Emmet	*	*	Page	*	*
	Floyd	*	*	Palo Alto	*	*
	Franklin	*	*	Poweshiek	6	0.6
	Greene	*	*	Sac	*	*
	Grundy	*	*	Shelby	*	*
	Guthrie	17	3.0	Tama	*	*
	Hamilton	*	*	Union	9	1.5
Hancock	5	0.8	Winnebago	6	1.0	
Hardin	*	*	Wright	*	*	
Harrison	*	*	Total	190	0.6	
Counties with Average Population > 20,000	Benton	5	0.4	Jones	8	0.8
	Boone	24	1.8	Lee	18	1.0
	Bremer	19	1.6	Mahaska	12	1.1
	Buchanan	11	1.0	Marion	7	0.4
	Buena Vista	8	0.8	Marshall	20	1.0
	Carroll	*	*	Muscatine	14	0.7
	Cerro Gordo	45	1.9	Plymouth	*	*
	Clinton	9	0.4	Sioux	6	0.4
	Des Moines	12	0.6	Story	34	0.9
	Fayette	6	0.5	Wapello	25	1.4
	Henry	*	*	Washington	5	0.5
	Jackson	*	*	Webster	32	1.6
	Jasper	35	1.9	Winneshiek	*	*
				Total	370	0.9
MSA Counties	Black Hawk	41	0.6	Polk	225	1.2
	Dallas	14	0.7	Pottawattamie	57	1.3
	Dubuque	32	0.7	Scott	28	0.4
	Johnson	24	0.4	Warren	23	1.1
	Linn	51	0.5	Woodbury	54	1.0
State Totals	1,155	0.8	Total	549	0.8	

¹Rates per 10,000 population

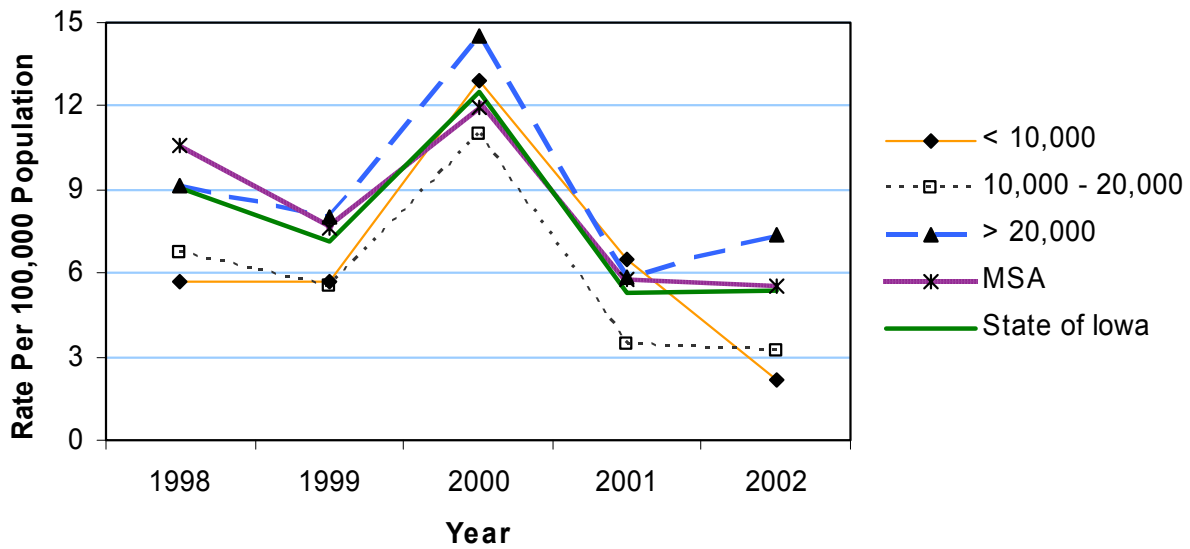
Source: Iowa Dept. of Public Health, Div. of Health Promotion, Prevention, and Addictive Behaviors

Other Admissions 1998-2002

Adult Crude Rates



Adolescent Crude Rates



Marriages 1998-2001

	County	#	Crude ¹ (Rank ²)	County	#	Crude ¹ (Rank ²)	
	Counties with Average Population < 10,000	Adair	203	6.2 (82)	Lucas	265	7.0 (50)
Adams		108	6.0 (87)	Monroe	206	6.4 (75)	
Audubon		164	6.0 (88)	Osceola	197	7.0 (51)	
Clarke		254	7.1 (45)	Pocahontas	230	6.6 (71)	
Davis		292	8.5 (07)	Ringgold	159	7.3 (33)	
Decatur		233	6.7 (64)	Taylor	204	7.3 (32)	
Fremont		247	7.7 (22)	Van Buren	237	7.6 (27)	
Howard		270	6.8 (61)	Wayne	223	8.3 (10)	
Ida		224	7.1 (41)	Worth	178	5.6 (95)	
				Total	3,894	7.0	
Counties with Average Population 10,000 to 20,000	Allamakee	456	7.8 (18)	Jones	285	6.9 (58)	
	Appanoose	465	8.5 (08)	Lee	422	6.7 (62)	
	Butler	340	5.6 (97)	Mahaska	501	7.7 (24)	
	Calhoun	275	6.2 (83)	Marion	306	6.7 (65)	
	Cass	425	7.2 (37)	Marshall	466	6.8 (60)	
	Cedar	418	5.8 (93)	Muscatine	271	5.6 (96)	
	Cherokee	367	7.0 (47)	Plymouth	331	7.0 (49)	
	Chickasaw	2,172	41.3 (01)	Sioux	530	9.5 (02)	
	Clay	478	6.9 (56)	Story	312	5.4 (99)	
	Clayton	555	7.4 (30)	Wapello	241	5.6 (98)	
	Crawford	466	6.9 (55)	Washington	255	6.4 (76)	
	Delaware	490	6.7 (68)	Webster	330	7.0 (48)	
	Dickinson	610	9.3 (04)	Winneshiek	392	6.5 (74)	
	Emmet	321	7.3 (36)	Jones	428	6.3 (80)	
	Floyd	408	6.0 (86)	Lee	329	8.1 (14)	
	Franklin	262	6.1 (85)	Mahaska	474	6.3 (79)	
	Greene	277	6.7 (66)	Marion	294	6.3 (77)	
	Grundy	311	6.3 (78)	Marshall	391	7.4 (29)	
	Guthrie	322	7.1 (44)	Muscatine	514	7.1 (43)	
	Hamilton	474	7.2 (39)	Plymouth	416	8.4 (09)	
	Hancock	284	5.9 (90)	Sioux	345	7.4 (31)	
	Hardin	523	7.0 (53)	Story	325	5.7 (94)	
	Harrison	390	6.2 (81)	Total	19,247	7.6	
	Counties with Average Population > 20,000	Benton	590	5.8 (92)	Jones	547	6.7 (63)
		Boone	700	6.7 (67)	Lee	1,327	8.7 (06)
		Bremer	726	7.8 (21)	Mahaska	732	8.2 (12)
Buchanan		613	7.3 (34)	Marion	990	7.7 (23)	
Buena Vista		541	6.6 (70)	Marshall	1,224	7.8 (20)	
Carroll		655	7.6 (26)	Muscatine	1,556	9.3 (03)	
Cerro Gordo		1,344	7.2 (40)	Plymouth	579	5.8 (91)	
Clinton		1,566	7.8 (19)	Sioux	920	7.3 (35)	
Des Moines		1,344	7.9 (16)	Story	2,097	6.6 (72)	
Fayette		540	6.1 (84)	Wapello	1,310	9.1 (05)	
Henry		567	7.0 (52)	Washington	582	7.0 (46)	
Jackson		617	7.6 (28)	Webster	1,142	7.1 (42)	
Jasper		963	6.5 (73)	Winneshiek	585	6.9 (57)	
				Total	24,357	7.4	
MSA Counties	Black Hawk	3,703	7.2 (38)	Polk	11,411	7.7 (25)	
	Dallas	1,267	7.9 (17)	Pottawattamie	2,855	8.2 (13)	
	Dubuque	2,940	8.3 (11)	Scott	5,106	8.1 (15)	
	Johnson	2,619	5.9 (89)	Warren	1,076	6.6 (69)	
	Linn	5,258	6.9 (54)	Woodbury	2,824	6.8 (59)	
	State Totals	86,557	7.4	Total	39,059	7.4	

¹Rates per 1,000 population²Rank among 99 Iowa counties

Source: Iowa Department of Public Health, Vital Statistics

Dissolutions 1998-2001

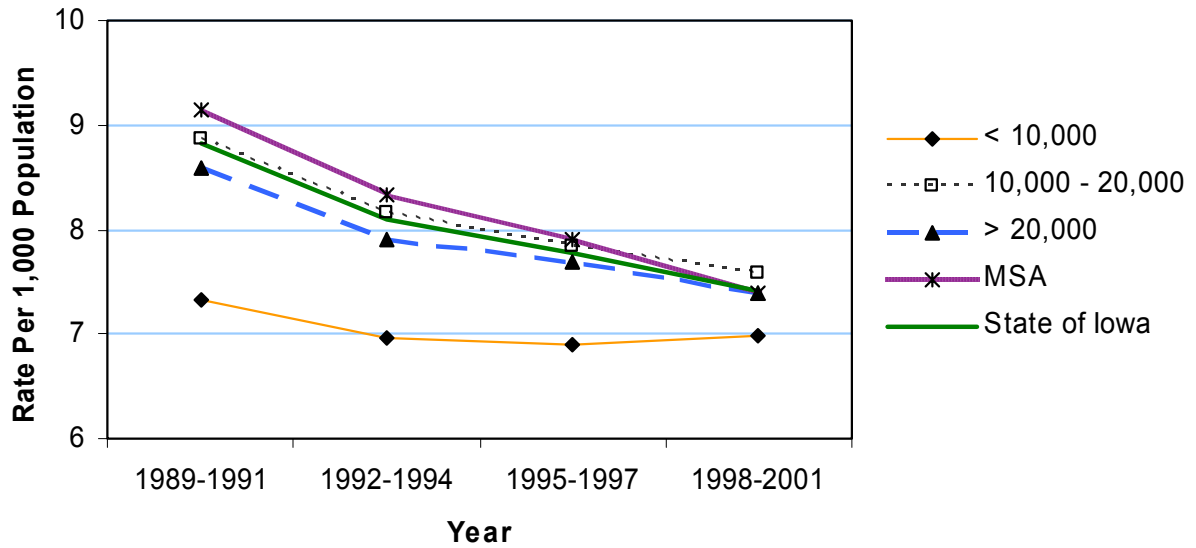
	County	#	Crude ¹ (Rank ²)	County	#	Crude ¹ (Rank ²)
	Counties with Average Population < 10,000	Adair	108	3.3 (42)	Lucas	134
Adams		55	3.1 (53)	Monroe	130	4.1 (08)
Audubon		73	2.7 (74)	Osceola	67	2.4 (84)
Clarke		87	2.4 (82)	Pocahontas	97	2.8 (70)
Davis		128	3.7 (23)	Ringgold	80	3.7 (26)
Decatur		120	3.5 (34)	Taylor	86	3.1 (52)
Fremont		126	4.0 (16)	Van Buren	122	3.9 (17)
Howard		91	2.3 (88)	Wayne	82	3.0 (58)
Ida		91	2.9 (65)	Worth	94	3.0 (60)
				Total	1,771	3.2
Counties with Average Population 10,000 to 20,000		Allamakee	116	2.0 (93)	Humboldt	136
	Appanoose	108	2.0 (94)	Iowa	164	2.6 (76)
	Butler	168	2.7 (72)	Jefferson	295	4.5 (05)
	Calhoun	106	2.4 (85)	Keokuk	61	1.3 (99)
	Cass	219	3.7 (25)	Kossuth	158	2.3 (87)
	Cedar	223	3.1 (54)	Louisa	171	3.5 (32)
	Cherokee	114	2.2 (91)	Lyon	74	1.6 (98)
	Chickasaw	163	3.1 (51)	Madison	203	3.6 (27)
	Clay	219	3.2 (50)	Mills	223	3.9 (21)
	Clayton	176	2.3 (86)	Mitchell	114	2.6 (75)
	Crawford	228	3.4 (39)	Monona	114	2.9 (68)
	Delaware	178	2.4 (81)	Montgomery	226	4.8 (03)
	Dickinson	237	3.6 (29)	O'Brien	155	2.6 (78)
	Emmet	122	2.8 (71)	Page	270	4.0 (15)
	Floyd	236	3.5 (33)	Palo Alto	102	2.5 (80)
	Franklin	136	3.2 (48)	Poweshiek	285	3.8 (22)
	Greene	160	3.9 (19)	Sac	158	3.4 (37)
	Grundy	142	2.9 (66)	Shelby	167	3.2 (47)
	Guthrie	176	3.9 (18)	Tama	210	2.9 (64)
	Hamilton	237	3.6 (28)	Union	222	4.5 (06)
Hancock	90	1.9 (96)	Winnebago	149	3.2 (46)	
Hardin	237	3.2 (49)	Wright	146	2.5 (79)	
Harrison	209	3.3 (41)	Total	7,803	3.1	
Counties with Average Population > 20,000	Benton	297	2.9 (63)	Jones	276	3.4 (36)
	Boone	420	4.0 (12)	Lee	521	3.4 (35)
	Bremer	267	2.9 (67)	Mahaska	356	4.0 (13)
	Buchanan	250	3.0 (61)	Marion	418	3.3 (45)
	Buena Vista	248	3.0 (57)	Marshall	588	3.7 (24)
	Carroll	258	3.0 (59)	Muscatine	875	5.3 (01)
	Cerro Gordo	625	3.4 (40)	Plymouth	303	3.1 (56)
	Clinton	681	3.4 (38)	Sioux	207	1.6 (97)
	Des Moines	776	4.6 (04)	Story	700	2.2 (90)
	Fayette	259	2.9 (62)	Wapello	583	4.0 (09)
	Henry	346	4.3 (07)	Washington	270	3.3 (44)
	Jackson	230	2.8 (69)	Webster	644	4.0 (11)
	Jasper	282	1.9 (95)	Winneshiek	192	2.3 (89)
				Total	10,872	3.3
MSA Counties	Black Hawk	1,111	2.2 (92)	Polk	5,749	3.9 (20)
	Dallas	417	2.6 (77)	Pottawattamie	1,682	4.8 (02)
	Dubuque	1,090	3.1 (55)	Scott	2,517	4.0 (14)
	Johnson	1,054	2.4 (83)	Warren	440	2.7 (73)
	Linn	2,732	3.6 (30)	Woodbury	1,677	4.0 (10)
State Totals	38,915	3.3	Total	18,469	3.5	

¹Rates per 1,000 population²Rank among 99 Iowa counties

Source: Iowa Department of Public Health, Vital Statistics

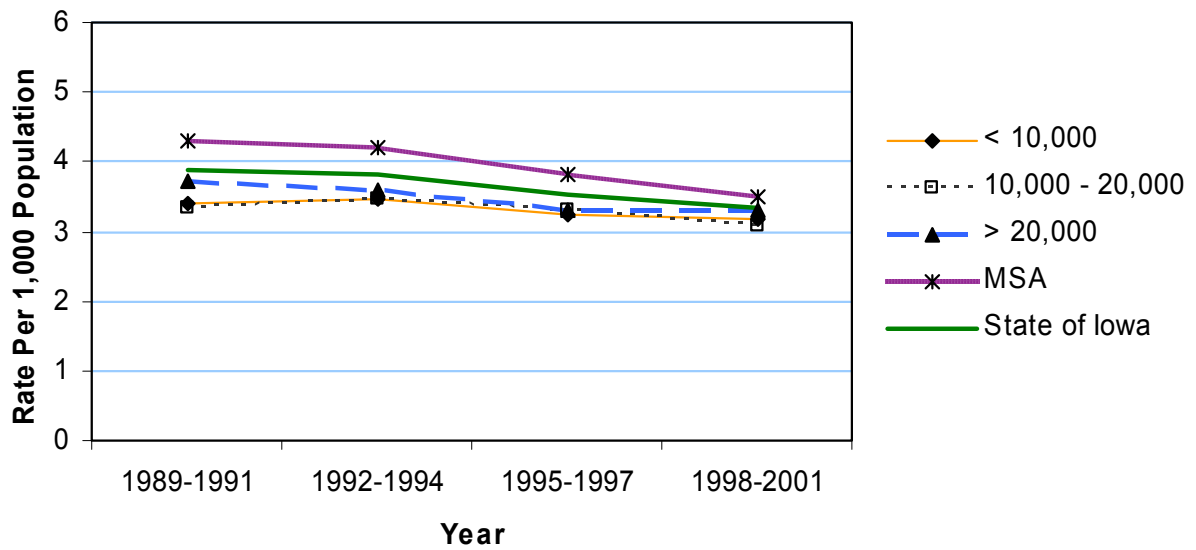
Marriages 1998-2001

Crude Rates



Dissolutions 1998-2001

Crude Rates



Domestic Abuse Cases 1999-2001¹

	Counties with Average Population < 10,000			Counties with Average Population 10,000 to 20,000			Counties with Average Population > 20,000			MSA Counties		
	County	#	Crude ²	County	#	Crude ²	County	#	Crude ²	County	#	Crude ²
Counties with Average Population < 10,000	Adair	9	3.7	Lucas	17	6.0						
	Adams	9	6.7	Monroe	44	18.3						
	Audubon	*	*	Osceola	25	11.9						
	Clarke	29	10.7	Pocahontas	8	3.1						
	Davis	22	8.6	Ringgold	*	*						
	Decatur	*	*	Taylor	18	8.7						
	Fremont	*	*	Van Buren	8	3.4						
	Howard	34	11.4	Wayne	23	11.4						
	Ida	*	*	Worth	19	8.0						
				Total	268	6.4						
Counties with Average Population 10,000 to 20,000	Allamakee	*	*	Humboldt	29	9.3						
	Appanoose	78	19.0	Iowa	10	2.1						
	Butler	*	*	Jefferson	103	21.2						
	Calhoun	38	11.4	Keokuk	11	3.2						
	Cass	90	20.5	Kossuth	42	8.2						
	Cedar	49	9.0	Louisa	47	12.9						
	Cherokee	56	14.3	Lyon	16	4.5						
	Chickasaw	*	*	Madison	5	1.2						
	Clay	65	12.5	Mills	28	6.4						
	Clayton	*	*	Mitchell	21	6.5						
	Crawford	88	17.3	Monona	67	22.4						
	Delaware	19	3.4	Montgomery	70	19.9						
	Dickinson	*	*	O'Brien	61	13.5						
	Emmet	37	11.2	Page	47	9.2						
	Floyd	42	8.3	Palo Alto	25	8.2						
	Franklin	20	6.2	Poweshiek	32	5.7						
	Greene	6	1.9	Sac	32	9.3						
	Grundy	17	4.6	Shelby	*	*						
	Guthrie	*	*	Tama	71	13.1						
	Hamilton	68	13.9	Union	*	*						
Hancock	34	9.4	Winnebago	31	8.9							
Hardin	58	10.3	Wright	47	11.0							
Harrison	74	15.8	Total	1,640	8.6							
Counties with Average Population > 20,000	Benton	23	3.0	Jones	60	9.9						
	Boone	142	18.1	Lee	388	34.1						
	Bremer	49	7.0	Mahaska	22	3.3						
	Buchanan	13	2.1	Marion	143	14.8						
	Buena Vista	147	24.0	Marshall	420	35.6						
	Carroll	40	6.2	Muscatine	514	41.1						
	Cerro Gordo	401	28.9	Plymouth	80	10.7						
	Clinton	15	1.0	Sioux	23	2.4						
	Des Moines	491	38.7	Story	204	8.5						
	Fayette	20	3.0	Wapello	274	25.3						
	Henry	84	13.8	Washington	12	1.9						
	Jackson	10	1.6	Webster	99	8.2						
	Jasper	59	5.3	Winneshiek	39	6.1						
				Total	3,772	15.2						
MSA Counties	Black Hawk	804	2.0	Polk	2,663	23.7						
	Dallas	77	6.3	Pottawattamie	1,183	45.0						
	Dubuque	537	20.1	Scott	2,096	44.0						
	Johnson	681	20.4	Warren	151	12.4						
	Linn	1,984	34.5	Woodbury	1,486	47.8						
	State Totals	17,342	19.8	Total	11,662	29.3						

¹Crime data may be incomplete due to selective reporting by counties and jurisdictions.

²Rates per 10,000 population

Source: Iowa Department of Public Safety, Uniform Crime Report

Driving Under the Influence Arrests 1999-2001¹

	Counties with Average Population < 10,000			Counties with Average Population 10,000 to 20,000			Counties with Average Population > 20,000			MSA Counties		
	County	#	Crude ² (Rank ³)	County	#	Crude ² (Rank ³)	County	#	Crude ² (Rank ³)	County	#	Crude ² (Rank ³)
Counties with Average Population < 10,000	Adair	92	37.4 (48)	Lucas	62	21.9 (75)	Lucas	62	21.9 (75)	Polk	4480	39.8 (40)
	Adams	48	35.9 (50)	Monroe	90	37.5 (47)	Monroe	90	37.5 (47)	Pottawattamie	1029	39.2 (43)
	Audubon	19	9.3 (90)	Osceola	108	51.4 (21)	Osceola	108	51.4 (21)	Scott	2136	44.9 (32)
	Clarke	220	81.0 (03)	Pocahontas	57	22.0 (74)	Pocahontas	57	22.0 (74)	Warren	512	41.9 (36)
	Davis	76	29.6 (59)	Ringgold	20	12.2 (87)	Ringgold	20	12.2 (87)	Woodbury	2259	72.6 (05)
	Decatur	74	28.5 (64)	Taylor	13	6.3 (96)	Taylor	13	6.3 (96)	Total	20,089	50.5
	Fremont	30	12.6 (85)	Van Buren	68	29.1 (63)	Van Buren	68	29.1 (63)			
	Howard	168	56.5 (16)	Wayne	35	17.4 (81)	Wayne	35	17.4 (81)			
	Ida	21	9.0 (93)	Worth	129	54.6 (17)	Worth	129	54.6 (17)			
				Total	1,330	31.8	Total	6,640	34.9			
Counties with Average Population 10,000 to 20,000	Allamakee	56	12.8 (84)	Humboldt	106	34.1 (52)	Humboldt	106	34.1 (52)			
	Appanoose	222	54.1 (19)	Iowa	138	29.3 (62)	Iowa	138	29.3 (62)			
	Butler	25	5.5 (97)	Jefferson	226	46.5 (26)	Jefferson	226	46.5 (26)			
	Calhoun	162	48.7 (24)	Keokuk	46	13.5 (83)	Keokuk	46	13.5 (83)			
	Cass	217	49.5 (23)	Kossuth	109	21.3 (77)	Kossuth	109	21.3 (77)			
	Cedar	235	43.1 (34)	Louisa	259	70.8 (06)	Louisa	259	70.8 (06)			
	Cherokee	103	26.4 (67)	Lyon	131	37.1 (49)	Lyon	131	37.1 (49)			
	Chickasaw	42	10.7 (89)	Madison	35	8.3 (94)	Madison	35	8.3 (94)			
	Clay	350	67.4 (07)	Mills	81	18.6 (79)	Mills	81	18.6 (79)			
	Clayton	66	11.8 (88)	Mitchell	96	29.5 (60)	Mitchell	96	29.5 (60)			
	Crawford	255	50.2 (22)	Monona	339	113.2 (01)	Monona	339	113.2 (01)			
	Delaware	182	33.0 (54)	Montgomery	158	45.0 (31)	Montgomery	158	45.0 (31)			
	Dickinson	61	12.4 (86)	O'Brien	174	38.5 (46)	O'Brien	174	38.5 (46)			
	Emmet	257	77.9 (04)	Page	150	29.5 (61)	Page	150	29.5 (61)			
	Floyd	91	18.0 (80)	Palo Alto	95	31.3 (56)	Palo Alto	95	31.3 (56)			
	Franklin	155	48.2 (25)	Poweshiek	149	26.4 (68)	Poweshiek	149	26.4 (68)			
	Greene	28	9.1 (91)	Sac	85	24.6 (69)	Sac	85	24.6 (69)			
	Grundy	144	38.9 (44)	Shelby	9	2.3 (99)	Shelby	9	2.3 (99)			
	Guthrie	22	6.5 (95)	Tama	315	58.0 (15)	Tama	315	58.0 (15)			
	Hamilton	299	60.9 (14)	Union	60	16.3 (82)	Union	60	16.3 (82)			
Hancock	108	29.9 (58)	Winnebago	94	26.9 (65)	Winnebago	94	26.9 (65)				
Hardin	222	39.5 (42)	Wright	194	45.2 (28)	Wright	194	45.2 (28)				
Harrison	289	61.7 (13)	Total	6,640	34.9	Total	10,121	40.9				
Counties with Average Population > 20,000	Benton	183	24.0 (70)	Jones	243	40.0 (39)	Jones	243	40.0 (39)			
	Boone	178	22.6 (73)	Lee	398	35.0 (51)	Lee	398	35.0 (51)			
	Bremer	306	43.6 (33)	Mahaska	306	45.6 (27)	Mahaska	306	45.6 (27)			
	Buchanan	286	45.2 (29)	Marion	382	39.6 (41)	Marion	382	39.6 (41)			
	Buena Vista	406	66.4 (09)	Marshall	503	42.6 (35)	Marshall	503	42.6 (35)			
	Carroll	263	40.9 (38)	Muscatine	804	64.2 (11)	Muscatine	804	64.2 (11)			
	Cerro Gordo	896	64.6 (10)	Plymouth	162	21.8 (76)	Plymouth	162	21.8 (76)			
	Clinton	136	9.0 (92)	Sioux	222	23.3 (72)	Sioux	222	23.3 (72)			
	Des Moines	785	61.9 (12)	Story	1268	52.9 (20)	Story	1268	52.9 (20)			
	Fayette	220	33.4 (53)	Wapello	725	67.1 (08)	Wapello	725	67.1 (08)			
	Henry	196	32.1 (55)	Washington	119	19.1 (78)	Washington	119	19.1 (78)			
	Jackson	143	23.5 (71)	Webster	497	41.2 (37)	Webster	497	41.2 (37)			
	Jasper	297	26.6 (66)	Winneshiek	197	30.8 (57)	Winneshiek	197	30.8 (57)			
			Total	10,121	40.9	Total	20,089	50.5				
MSA Counties	Black Hawk	1460	3.7 (98)									
	Dallas	476	38.7 (45)									
	Dubuque	1208	45.2 (30)									
	Johnson	3409	102.1 (02)									
	Linn	3120	54.2 (18)									
State Totals	38,180	43.5										

¹Crime data may be incomplete due to selective reporting by counties and jurisdictions.

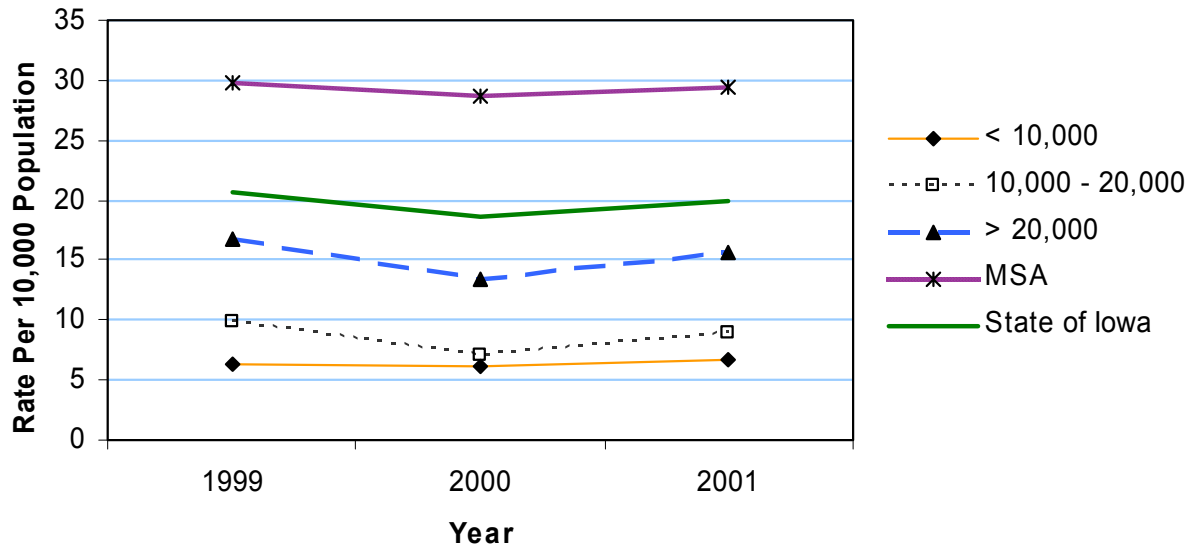
²Rates per 10,000 population

³Rank among 99 Iowa counties

Source: Iowa Department of Public Safety, Uniform Crime Report

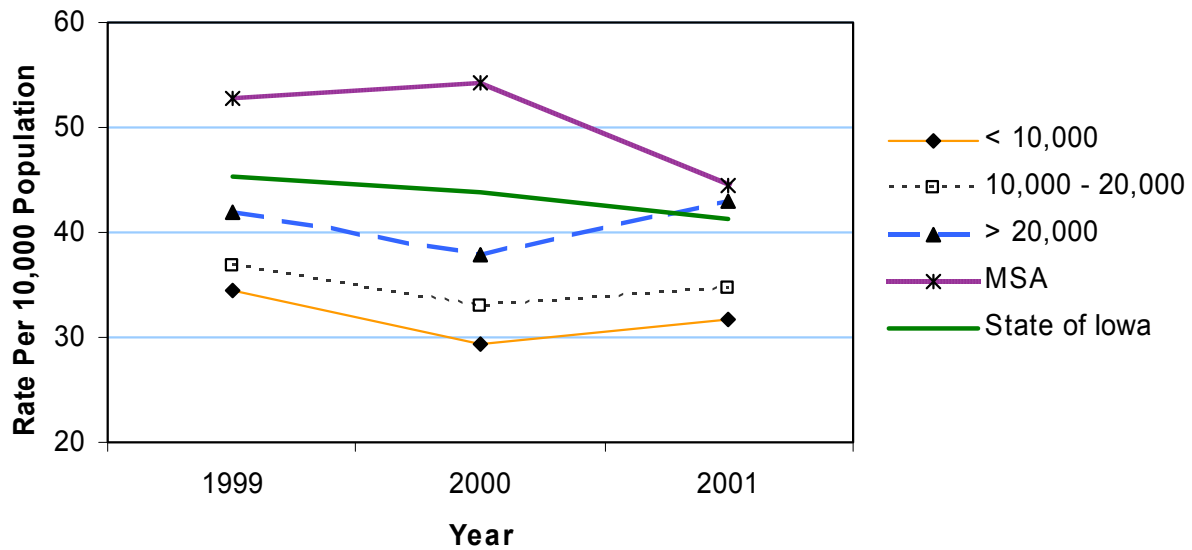
Domestic Abuse Cases 1999-2001

Crude Rates



Driving Under the Influence Arrests 1999-2001

Crude Rates



Juvenile Arrests 1999-2001¹

	County	#	Crude ²	County	#	Crude ²
	Counties with Average Population < 10,000	Adair	34	13.8	Lucas	209
Adams		36	26.9	Monroe	136	56.7
Audubon		64	31.3	Osceola	206	98.1
Clarke		138	50.8	Pocahontas	6	2.3
Davis		58	22.6	Ringgold	*	*
Decatur		*	*	Taylor	*	*
Fremont		*	*	Van Buren	17	7.3
Howard		279	93.8	Wayne	25	12.4
Ida		6	2.6	Worth	25	10.6
				Total	1,247	29.8
Counties with Average Population 10,000 to 20,000	Allamakee	21	4.8	Humboldt	82	26.4
	Appanoose	624	152.2	Iowa	56	11.9
	Butler	8	1.7	Jefferson	259	53.3
	Calhoun	22	6.6	Keokuk	*	*
	Cass	307	70.0	Kossuth	437	85.3
	Cedar	254	46.5	Louisa	220	60.2
	Cherokee	289	74.0	Lyon	187	53.0
	Chickasaw	22	5.6	Madison	12	2.8
	Clay	457	87.9	Mills	74	17.0
	Clayton	7	1.2	Mitchell	204	62.8
	Crawford	130	25.6	Monona	279	93.2
	Delaware	403	73.1	Montgomery	230	65.5
	Dickinson	*	*	O'Brien	354	78.3
	Emmet	9	2.7	Page	248	48.7
	Floyd	189	37.5	Palo Alto	77	25.4
	Franklin	145	45.1	Poweshiek	144	25.5
	Greene	24	7.8	Sac	102	29.5
	Grundy	131	35.4	Shelby	5	1.3
	Guthrie	13	3.8	Tama	281	51.8
	Hamilton	302	61.6	Union	46	12.5
Hancock	159	44.0	Winnebago	163	46.6	
Hardin	588	104.7	Wright	136	31.7	
Harrison	141	30.1	Total	7,846	41.2	
Counties with Average Population > 20,000	Benton	100	13.1	Jones	111	18.3
	Boone	480	61.0	Lee	1,340	117.8
	Bremer	312	44.5	Mahaska	656	97.8
	Buchanan	452	71.5	Marion	401	41.5
	Buena Vista	599	97.9	Marshall	1,886	159.8
	Carroll	424	66.0	Muscatine	2,283	182.4
	Cerro Gordo	1,586	114.3	Plymouth	374	50.2
	Clinton	112	7.5	Sioux	211	22.2
	Des Moines	2,000	157.7	Story	1,390	58.0
	Fayette	153	23.3	Wapello	1,636	151.3
	Henry	337	55.3	Washington	*	*
	Jackson	399	65.6	Webster	1,154	95.7
	Jasper	318	28.5	Winneshiek	305	47.7
				Total	19,023	76.9
MSA Counties	Black Hawk	3,614	9.1	Polk	7,819	69.4
	Dallas	581	47.2	Pottawattamie	4,414	168.1
	Dubuque	3,062	114.6	Scott	6,477	136.0
	Johnson	2,769	83.0	Warren	432	35.4
	Linn	4,035	70.1	Woodbury	6,731	216.3
			Total	39,934	100.3	
State Totals		68,050	77.5			

¹Crime data may be incomplete due to selective reporting by counties and jurisdictions.

²Rates per 10,000 population

Source: Iowa Department of Public Safety, Uniform Crime Report

Juvenile Vandalism 1999-2001¹

	Counties with Average Population < 10,000			Counties with Average Population 10,000 to 20,000			Counties with Average Population > 20,000			MSA Counties		
	County	#	Crude ²	County	#	Crude ²	County	#	Crude ²	County	#	Crude ²
Counties with Average Population < 10,000	Adair	*		Lucas	20	7.1	Lucas	20	7.1	Polk	535	4.8
	Adams	*	*	Monroe	9	3.7	Lee	113	9.9	Pottawattamie	288	11.0
	Audubon	*	*	Osceola	32	15.2	Mahaska	51	7.6	Scott	360	7.6
	Clarke	13	4.8	Pocahontas	*	*	Marion	34	3.5	Warren	30	2.5
	Davis	*	*	Ringgold	*	*	Marshall	66	5.6	Woodbury	349	11.2
	Decatur	*	*	Taylor	*	*	Muscatine	125	10.0	Total	2,315	5.8
	Fremont	*	*	Van Buren	*	*	Plymouth	9	1.2			
	Howard	19	6.4	Wayne	8	4.0	Sioux	36	3.8			
	Ida	*	*	Worth	*	*	Story	101	4.2			
				Total	110	2.6	Wapello	78	7.2			
Counties with Average Population 10,000 to 20,000	Allamakee	*	*	Humboldt	*	*	Washington	*	*	Black Hawk	230	0.6
	Appanoose	35	8.5	Iowa	*	*	Webster	87	7.2	Dallas	44	3.6
	Butler	*	*	Jefferson	9	1.9	Winneshiek	18	2.8	Dubuque	45	1.7
	Calhoun	6	1.8	Keokuk	*	*	Winnebago	17	4.9	Johnson	138	4.1
	Cass	9	2.1	Kossuth	37	7.2	Wright	8	1.9	Linn	296	5.1
	Cedar	27	4.9	Louisa	15	4.1	Total	1,225	5.0			
	Cherokee	21	5.4	Lyon	14	4.0						
	Chickasaw	*	*	Madison	*	*						
	Clay	40	7.7	Mills	15	3.4						
	Clayton	*	*	Mitchell	30	9.2						
	Crawford	*	*	Monona	13	4.3						
	Delaware	34	6.2	Montgomery	17	4.8						
	Dickinson	*	*	O'Brien	40	8.8						
	Emmet	*	*	Page	12	2.4						
	Floyd	9	1.8	Palo Alto	*	*						
	Franklin	6	1.9	Poweshiek	6	1.1						
	Greene	6	1.9	Sac	19	5.5						
	Grundy	10	2.7	Shelby	*	0.0						
	Guthrie	*	*	Tama	32	5.9						
	Hamilton	29	5.9	Union	*	*						
Hancock	22	6.1	Winnebago	17	4.9							
Hardin	29	5.2	Wright	8	1.9							
Harrison	*	*	Total	578	3.0							
Counties with Average Population > 20,000	Benton	8	1.0	Jones	6	1.0						
	Boone	52	6.6	Lee	113	9.9						
	Bremer	30	4.3	Mahaska	51	7.6						
	Buchanan	31	4.9	Marion	34	3.5						
	Buena Vista	48	7.8	Marshall	66	5.6						
	Carroll	51	7.9	Muscatine	125	10.0						
	Cerro Gordo	96	6.9	Plymouth	9	1.2						
	Clinton	10	0.7	Sioux	36	3.8						
	Des Moines	99	7.8	Story	101	4.2						
	Fayette	*	*	Wapello	78	7.2						
	Henry	8	1.3	Washington	*	*						
	Jackson	42	6.9	Webster	87	7.2						
	Jasper	24	2.1	Winneshiek	18	2.8						
			Total	1,225	5.0							
MSA Counties	Black Hawk	230	0.6	Polk	535	4.8						
	Dallas	44	3.6	Pottawattamie	288	11.0						
	Dubuque	45	1.7	Scott	360	7.6						
	Johnson	138	4.1	Warren	30	2.5						
	Linn	296	5.1	Woodbury	349	11.2						
	State Totals	4,228	4.8									

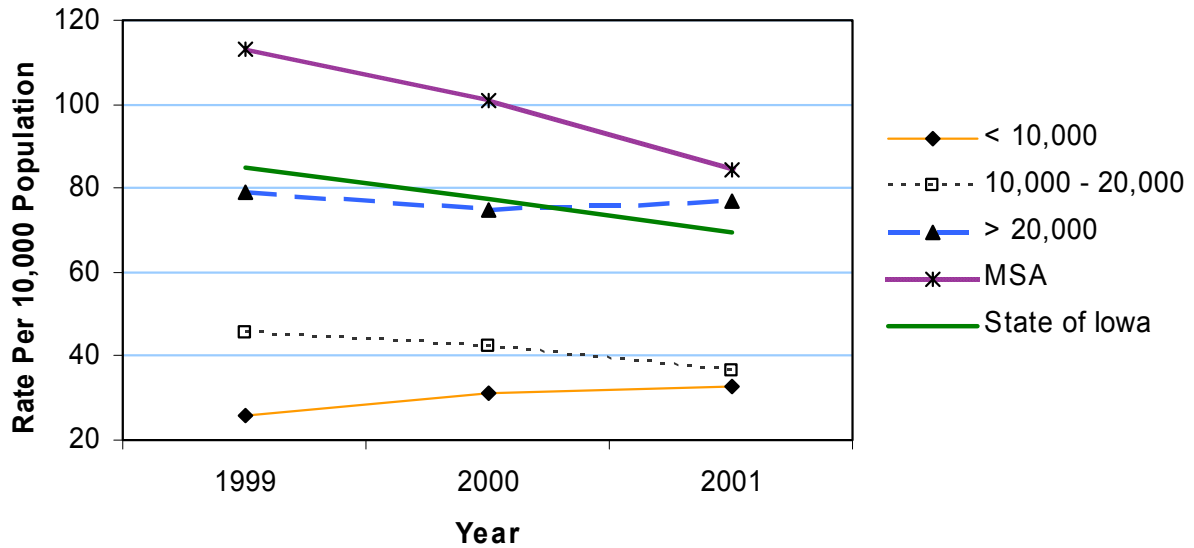
¹ Crime data may be incomplete due to selective reporting by counties and jurisdictions.

² Rates per 10,000 population

Source: Iowa Department of Public Safety, Uniform Crime Report

Juvenile Arrests 1999-2001

Crude Rates



Juvenile Vandalism 1999-2001

Crude Rates

