

## Other Mortality

With the population aging, chronic disease has become a major determinant of the health of Iowans and the need for health care services in the state.

Heart disease, still the number one cause of death in Iowa, accounted for 310 deaths per 100,000 persons (crude rate) between 1993 and 2002. Using age-adjusted rates, the four county groupings (based on county size) do not vary much, but we do see a consistent decline over time. In the 1978 to 1983 period, the state age-adjusted mortality rate was 365 per 100,000, whereas it had dropped steadily to 240 per 100,000 by the 1996-2002 time period.

Stroke is currently the third leading cause of death in Iowa, with a crude mortality rate of 76 per 100,000 from 1993 to 2002. From 1978 through 1990, Iowa experienced a steady decline in age-adjusted stroke mortality, but it remained relatively constant between 1990 and 2002. The age-adjusted

mortality rates for chronic obstructive pulmonary disease (COPD), currently the fourth leading cause of death, have been increasing over time with the larger counties experiencing the highest rates. The crude rates of this disease have also been increasing over time, but the smaller counties are experiencing the highest rates because COPD is a disease primarily of the elderly, a greater percent of the small county population. Age-adjusted death rates for pneumonia and influenza, the fifth leading cause of death, show a slight decline in the 1996-2002 period compared with the 1990-1995 period in each county grouping. Crude rates indicate a greater problem in the smaller counties, due to their larger proportion of elderly. The smaller counties are also exhibiting a greater problem with mortality due to diabetes, atherosclerosis, kidney diseases, and Alzheimer's disease, based upon crude mortality rates.

These data were obtained from death certificates filed at the Iowa Department of Public Health via the National Center for Health Statistics and the SEER\*Stat software program provided by the National Cancer Institute.

### MAJOR CAUSES OF DEATH IN IOWA...

- ✓ Heart disease
- ✓ Cancer
- ✓ Stroke
- ✓ Chronic obstructive pulmonary disease
- ✓ Pneumonia/influenza
- ✓ Unintentional injuries
- ✓ Arteriosclerosis
- ✓ Diabetes
- ✓ Alzheimer's Disease
- ✓ Infectious/parasitic diseases

## All Causes Mortality 1993-2002

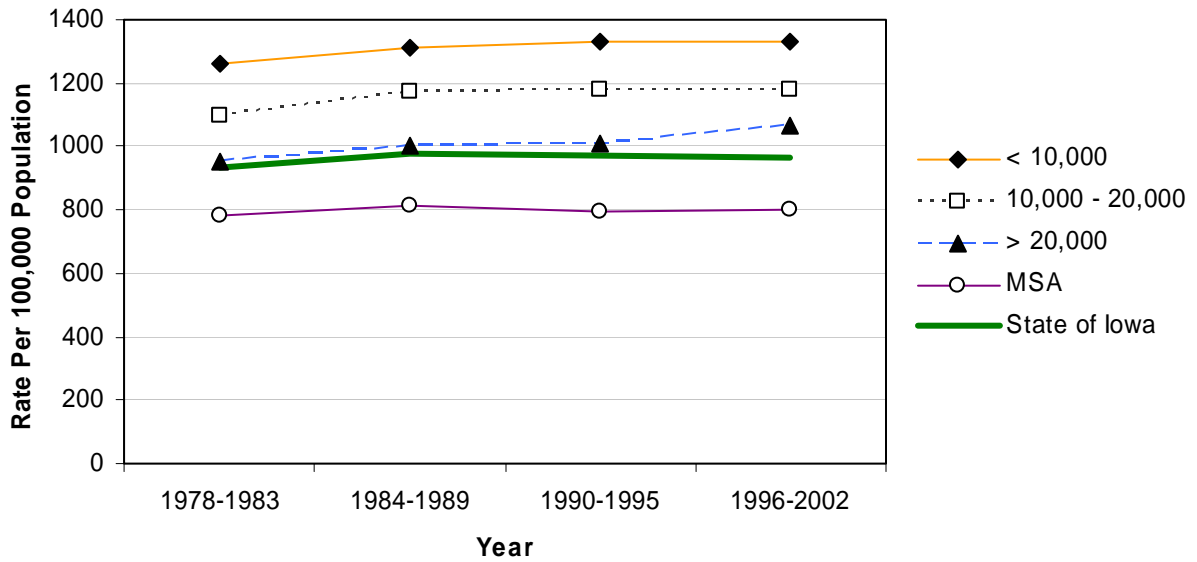
	Counties with 2004 Population < 10,000				Counties with 2004 Population 10,000 – 20,000				Counties with 2004 Population > 20,000				MSA Counties				
	County	#	Crude <sup>1</sup> (Rank <sup>3</sup> )	Adjusted <sup>1,2</sup> (Rank <sup>3</sup> )	County	#	Crude <sup>1</sup> (Rank <sup>3</sup> )	Adjusted <sup>1,2</sup> (Rank <sup>3</sup> )	County	#	Crude <sup>1</sup> (Rank <sup>3</sup> )	Adjusted <sup>1,2</sup> (Rank <sup>3</sup> )	County	#	Crude <sup>1</sup> (Rank <sup>3</sup> )	Adjusted <sup>1,2</sup> (Rank <sup>3</sup> )	
Counties with 2004 Population < 10,000	Adair	1,171	1414.0 (08)	759.8 (68)	Monona	1,623	1620.7 (01)	853.9 (17)	Monroe	1,035	1282.8 (26)	850.6 (20)	Osceola	847	1195.8 (42)	780.7 (57)	
	Adams	614	1360.4 (13)	835.5 (25)	Monroe	1,035	1282.8 (26)	850.6 (20)	Palo Alto	1,403	1372.2 (12)	823.8 (31)	Pocahontas	1,155	1305.9 (23)	759.2 (70)	
	Audubon	962	1401.0 (09)	731.1 (90)	Osceola	847	1195.8 (42)	780.7 (57)	Palo Alto	1,403	1372.2 (12)	823.8 (31)	Ringgold	832	1536.8 (03)	805.5 (37)	
	Clarke	997	1131.5 (54)	770.1 (64)	Palo Alto	1,403	1372.2 (12)	823.8 (31)	Pocahontas	1,155	1305.9 (23)	759.2 (70)	Taylor	973	1392.5 (10)	763.8 (67)	
	Davis	972	1142.5 (52)	785.0 (53)	Pocahontas	1,155	1305.9 (23)	759.2 (70)	Ringgold	832	1536.8 (03)	805.5 (37)	Van Buren	1,028	1328.1 (17)	879.0 (08)	
	Decatur	1,051	1235.8 (33)	854.3 (16)	Ringgold	832	1536.8 (03)	805.5 (37)	Taylor	973	1392.5 (10)	763.8 (67)	Wayne	1,092	1597.0 (02)	871.0 (12)	
	Fremont	1,148	1426.7 (05)	928.5 (02)	Taylor	973	1392.5 (10)	763.8 (67)	Van Buren	1,028	1328.1 (17)	879.0 (08)	Worth	1,014	1280.4 (28)	793.2 (44)	
	Howard	1,310	1317.5 (20)	786.7 (49)	Van Buren	1,028	1328.1 (17)	879.0 (08)	Wayne	1,092	1597.0 (02)	871.0 (12)	<b>Total</b>	21,454	1341.3	811.4	
	Ida	1,083	1355.0 (15)	839.1 (24)	Wayne	1,092	1597.0 (02)	871.0 (12)	Worth	1,014	1280.4 (28)	793.2 (44)					
	Lucas	1,144	1224.3 (37)	779.2 (58)	Worth	1,014	1280.4 (28)	793.2 (44)									
					<b>Total</b>	21,454	1341.3	811.4									
	Counties with 2004 Population 10,000 – 20,000	Allamakee	1,686	1164.9 (50)	776.9 (61)	Hardin	2,492	1322.0 (18)	785.7 (50)	Humboldt	1,234	1185.5 (44)	733.8 (86)	Iowa	1,685	1093.8 (62)	759.4 (69)
		Appanoose	1,801	1314.5 (22)	826.4 (28)	Humboldt	1,234	1185.5 (44)	733.8 (86)	Iowa	1,685	1093.8 (62)	759.4 (69)	Jefferson	1,500	915.8 (85)	766.6 (65)
Butler		1,941	1261.1 (29)	784.5 (54)	Iowa	1,685	1093.8 (62)	759.4 (69)	Jefferson	1,500	915.8 (85)	766.6 (65)	Keokuk	1,351	1179.4 (46)	750.7 (76)	
Calhoun		1,606	1424.1 (06)	785.2 (51)	Jefferson	1,500	915.8 (85)	766.6 (65)	Keokuk	1,351	1179.4 (46)	750.7 (76)	Kossuth	2,051	1178.2 (47)	758.9 (71)	
Cass		1,989	1342.0 (16)	806.3 (36)	Keokuk	1,351	1179.4 (46)	750.7 (76)	Kossuth	2,051	1178.2 (47)	758.9 (71)	Louisa	1,153	955.8 (80)	812.3 (34)	
Cedar		1,759	979.6 (79)	718.2 (94)	Kossuth	2,051	1178.2 (47)	758.9 (71)	Louisa	1,153	955.8 (80)	812.3 (34)	Lyon	1,251	1062.0 (67)	719.6 (92)	
Cherokee		1,637	1229.2 (35)	798.7 (40)	Louisa	1,153	955.8 (80)	812.3 (34)	Lyon	1,251	1062.0 (67)	719.6 (92)	Mitchell	1,436	1315.7 (21)	734.4 (84)	
Chickasaw		1,452	1101.4 (61)	787.5 (48)	Lyon	1,251	1062.0 (67)	719.6 (92)	Mitchell	1,436	1315.7 (21)	734.4 (84)	Montgomery	1,726	1460.9 (04)	874.9 (09)	
Clay		1,815	1037.8 (69)	741.4 (80)	Mitchell	1,436	1315.7 (21)	734.4 (84)	Montgomery	1,726	1460.9 (04)	874.9 (09)	O'Brien	1,903	1241.6 (32)	731.8 (89)	
Clayton		2,243	1194.1 (43)	828.0 (27)	Montgomery	1,726	1460.9 (04)	874.9 (09)	O'Brien	1,903	1241.6 (32)	731.8 (89)	Page	2,307	1360.1 (14)	847.1 (22)	
Crawford		1,724	1023.3 (72)	732.7 (87)	O'Brien	1,903	1241.6 (32)	731.8 (89)	Page	2,307	1360.1 (14)	847.1 (22)	Poweshiek	2,133	1127.5 (56)	777.9 (60)	
Delaware		1,574	857.5 (91)	732.0 (88)	Page	2,307	1360.1 (14)	847.1 (22)	Poweshiek	2,133	1127.5 (56)	777.9 (60)	Sac	1,664	1417.0 (07)	793.9 (43)	
Dickinson		1,818	1134.8 (53)	738.0 (82)	Poweshiek	2,133	1127.5 (56)	777.9 (60)	Sac	1,664	1417.0 (07)	793.9 (43)	Shelby	1,603	1216.0 (39)	756.0 (74)	
Emmet		1,366	1217.9 (38)	778.1 (59)	Sac	1,664	1417.0 (07)	793.9 (43)	Shelby	1,603	1216.0 (39)	756.0 (74)	Tama	2,129	1185.4 (45)	797.8 (41)	
Floyd		2,088	1233.6 (34)	784.2 (55)	Shelby	1,603	1216.0 (39)	756.0 (74)	Tama	2,129	1185.4 (45)	797.8 (41)	Union	1,580	1280.5 (27)	853.3 (18)	
Franklin		1,371	1258.4 (30)	790.5 (45)	Tama	2,129	1185.4 (45)	797.8 (41)	Union	1,580	1280.5 (27)	853.3 (18)	Winnebago	1,437	1225.7 (36)	770.8 (63)	
Greene		1,334	1294.6 (25)	746.3 (79)	Union	1,580	1280.5 (27)	853.3 (18)	Winnebago	1,437	1225.7 (36)	770.8 (63)	Wright	1,999	1388.2 (11)	789.4 (47)	
Hamilton		1,747	1069.2 (66)	756.9 (72)	Winnebago	1,437	1225.7 (36)	770.8 (63)	Wright	1,999	1388.2 (11)	789.4 (47)	<b>Total</b>	64,901	1183.5	774.9	
Hancock		1,316	1090.6 (63)	738.0 (82)	Wright	1,999	1388.2 (11)	789.4 (47)	<b>Total</b>	64,901	1183.5	774.9					
				<b>Total</b>	64,901	1183.5	774.9										
Counties with 2004 Population > 20,000	Boone	3,024	1171.1 (48)	839.5 (23)	Lee	4,403	1147.4 (51)	892.0 (06)	Mahaska	2,189	987.7 (75)	754.6 (75)					
	Buchanan	2,112	1001.9 (74)	862.2 (14)	Mahaska	2,189	987.7 (75)	754.6 (75)	Marion	3,250	1029.1 (70)	796.7 (42)					
	Buena Vista	2,151	1053.5 (68)	750.1 (77)	Marion	3,250	1029.1 (70)	796.7 (42)	Marshall	5,082	1301.5 (24)	983.5 (01)					
	Carroll	2,373	1102.7 (59)	747.7 (78)	Marshall	5,082	1301.5 (24)	983.5 (01)	Muscatine	3,750	903.1 (87)	853.0 (19)					
	Cerro Gordo	5,215	1118.7 (58)	825.9 (29)	Muscatine	3,750	903.1 (87)	853.0 (19)	Plymouth	2,420	985.0 (76)	766.4 (66)					
	Clinton	5,462	1078.9 (64)	872.0 (11)	Plymouth	2,420	985.0 (76)	766.4 (66)	Sioux	2,486	788.7 (95)	648.6 (99)					
	Des Moines	4,365	1026.1 (71)	789.8 (46)	Sioux	2,486	788.7 (95)	648.6 (99)	Wapello	4,379	1214.8 (40)	884.1 (07)					
	Fayette	2,578	1169.5 (49)	785.2 (51)	Wapello	4,379	1214.8 (40)	884.1 (07)	Webster	4,785	1201.0 (41)	866.7 (13)					
	Henry	2,043	1016.9 (73)	802.4 (39)	Webster	4,785	1201.0 (41)	866.7 (13)	Winneshiek	1,843	868.6 (90)	676.5 (97)					
	Jackson	2,230	1102.2 (60)	834.2 (26)	Winneshiek	1,843	868.6 (90)	676.5 (97)	<b>Total</b>	69,706	1067.0	820.9					
	Jasper	3,566	979.8 (78)	781.2 (56)	<b>Total</b>	69,706	1067.0	820.9									
MSA Counties	Benton	2,200	892.1 (88)	724.2 (91)	Linn	13,965	748.9 (97)	756.5 (73)	Madison	1,539	1128.4 (55)	847.4 (21)					
	Black Hawk	11,588	910.1 (86)	825.4 (30)	Madison	1,539	1128.4 (55)	847.4 (21)	Mills	1,327	941.3 (83)	894.5 (05)					
	Bremer	2,283	980.6 (77)	734.1 (85)	Mills	1,327	941.3 (83)	894.5 (05)	Polk	27,399	752.0 (96)	819.9 (32)					
	Dallas	3,048	807.5 (93)	803.9 (38)	Polk	27,399	752.0 (96)	819.9 (32)	Pottawattamie	8,123	945.1 (82)	910.3 (04)					
	Dubuque	8,465	951.6 (81)	812.1 (35)	Pottawattamie	8,123	945.1 (82)	910.3 (04)	Scott	12,874	817.7 (92)	873.3 (10)					
	Grundy	1,321	1076.0 (65)	688.6 (96)	Scott	12,874	817.7 (92)	873.3 (10)	Story	4,395	561.2 (98)	659.3 (98)					
	Guthrie	1,415	1254.8 (31)	774.8 (62)	Story	4,395	561.2 (98)	659.3 (98)	Warren	3,134	789.7 (94)	816.3 (33)					
	Harrison	2,031	1318.2 (19)	912.3 (03)	Warren	3,134	789.7 (94)	816.3 (33)	Washington	2,311	1125.9 (57)	740.7 (81)					
	Johnson	4,927	457.5 (99)	705.4 (95)	Washington	2,311	1125.9 (57)	740.7 (81)	Woodbury	9,624	931.4 (84)	858.5 (15)					
	Jones	1,800	887.0 (89)	719.2 (93)	Woodbury	9,624	931.4 (84)	858.5 (15)	<b>Total</b>	123,769	807.5	806.6					
					<b>Total</b>	123,769	807.5	806.6									
	<b>State Total</b>	279,830	966.8	801.8													

<sup>1</sup>Rates per 100,000 population<sup>2</sup>Adjusted to year 2000 population<sup>3</sup>Rank among 99 counties

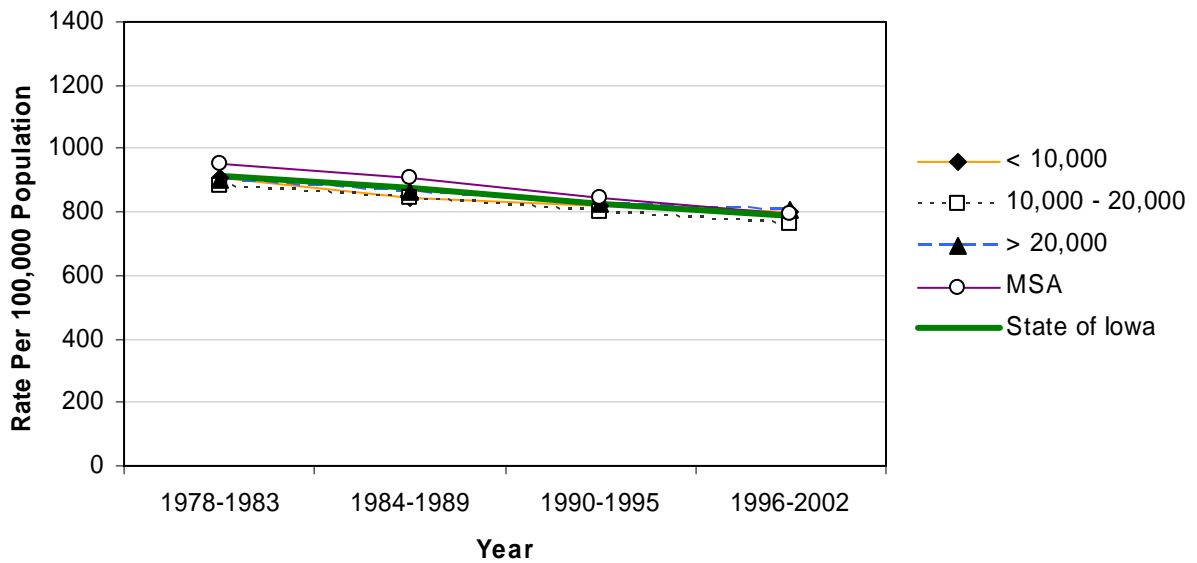
Source: Iowa Department of Public Health via NCHS and NCI's SEER\*Stat Program

## All Causes Mortality by County Group 1978-2002

### Crude Rates



### Age-Adjusted Rates



## Heart Disease Mortality 1993-2002

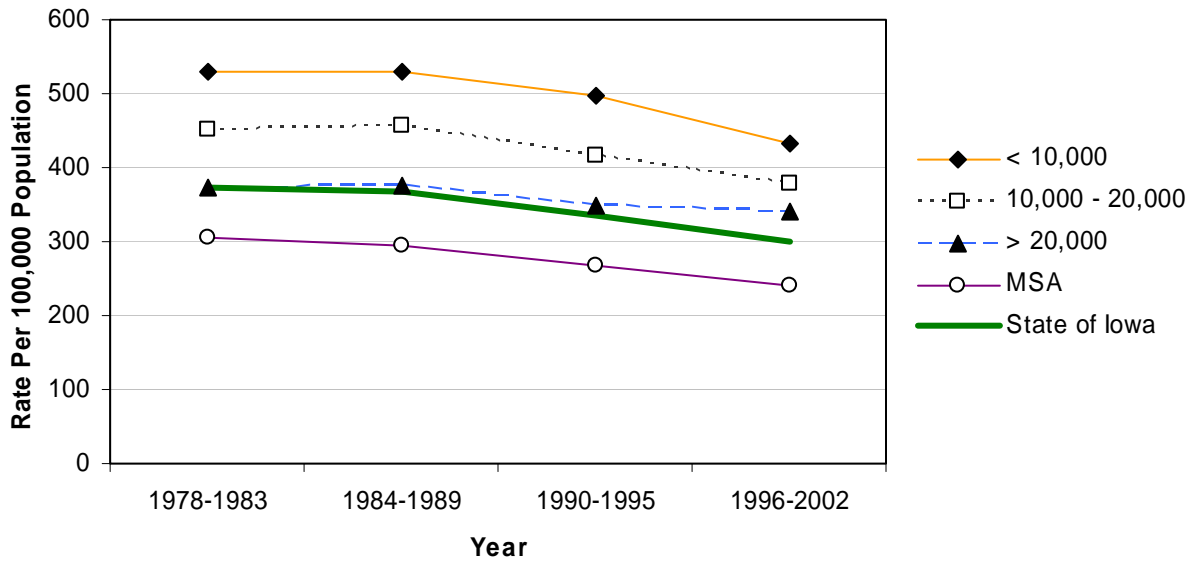
	County	#	Crude <sup>1</sup>		Adjusted <sup>1,2</sup>		County	#	Crude <sup>1</sup>		Adjusted <sup>1,2</sup>	
			(Rank <sup>3</sup> )	(Rank <sup>3</sup> )	(Rank <sup>3</sup> )	(Rank <sup>3</sup> )			(Rank <sup>3</sup> )	(Rank <sup>3</sup> )		
Counties with 2004 Population < 10,000	Adair	364	439.5 (16)	227.1 (75)	Monona	477	476.3 (10)	232.8 (67)				
	Adams	198	438.7 (17)	253.7 (42)	Monroe	342	423.9 (26)	267.0 (23)				
	Audubon	275	400.5 (40)	203.4 (90)	Osceola	393	554.8 (03)	332.8 (02)				
	Clarke	347	393.8 (42)	254.5 (40)	Palo Alto	394	385.3 (47)	217.1 (81)				
	Davis	343	403.2 (39)	257.4 (37)	Pocahontas	362	409.3 (37)	228.7 (73)				
	Decatur	361	424.5 (25)	271.2 (19)	Ringgold	330	609.6 (01)	298.4 (11)				
	Fremont	337	418.8 (32)	261.5 (30)	Taylor	320	458.0 (14)	244.7 (50)				
	Howard	394	396.3 (41)	233.1 (66)	Van Buren	333	430.2 (21)	270.9 (20)				
	Ida	422	528.0 (05)	303.9 (07)	Wayne	351	513.3 (07)	263.8 (29)				
	Lucas	506	541.5 (04)	317.1 (05)	Worth	343	433.1 (18)	249.7 (48)				
					<b>Total</b>	7,192	449.7	256.6				
	Counties with 2004 Population 10,000 – 20,000	Allamakee	434	299.9 (83)	195.6 (96)	Hardin	880	466.9 (12)	260.5 (32)			
		Appanoose	809	590.5 (02)	346.8 (01)	Humboldt	426	409.2 (38)	241.8 (55)			
Butler		605	393.1 (44)	230.6 (71)	Iowa	477	309.6 (77)	205.3 (89)				
Calhoun		479	424.8 (24)	227.3 (74)	Jefferson	487	297.3 (84)	239.5 (59)				
Cass		638	430.5 (20)	241.9 (54)	Keokuk	406	354.4 (58)	214.6 (86)				
Cedar		495	275.7 (87)	195.9 (95)	Kossuth	590	338.9 (64)	210.6 (88)				
Cherokee		569	427.2 (22)	265.0 (25)	Louisa	381	315.8 (74)	261.1 (31)				
Chickasaw		556	421.7 (28)	288.2 (13)	Lyon	445	377.8 (52)	247.3 (49)				
Clay		545	311.6 (76)	215.8 (82)	Mitchell	542	496.6 (09)	252.4 (43)				
Clayton		630	335.4 (66)	226.4 (77)	Montgomery	498	421.5 (29)	229.5 (72)				
Crawford		578	343.1 (61)	236.3 (64)	O'Brien	661	431.3 (19)	234.7 (65)				
Delaware		476	259.3 (90)	217.9 (80)	Page	779	459.3 (13)	267.8 (22)				
Dickinson		617	385.1 (48)	238.4 (63)	Poweshiek	665	351.5 (59)	231.3 (70)				
Emmet		424	378.0 (51)	232.3 (68)	Sac	485	413.0 (34)	221.0 (79)				
Floyd		716	423.0 (27)	256.4 (38)	Shelby	620	470.3 (11)	273.2 (18)				
Franklin		457	419.5 (31)	254.2 (41)	Tama	697	388.1 (45)	243.3 (52)				
Greene		464	450.3 (15)	244.2 (51)	Union	631	511.4 (08)	313.8 (06)				
Hamilton		582	356.2 (56)	239.3 (60)	Winnebago	482	411.1 (35)	240.8 (56)				
Hancock		494	409.4 (36)	264.9 (26)	Wright	567	393.7 (43)	213.7 (87)				
				<b>Total</b>	21,287	388.2	241.5					
Counties with 2004 Population > 20,000	Boone	1,081	418.6 (33)	281.3 (15)	Lee	1,461	380.7 (49)	287.3 (14)				
	Buchanan	750	355.8 (57)	298.7 (10)	Mahaska	719	324.4 (71)	239.3 (60)				
	Buena Vista	679	332.6 (69)	226.5 (76)	Marion	976	309.1 (79)	231.5 (69)				
	Carroll	717	333.2 (68)	215.1 (84)	Marshall	1,472	377.0 (53)	277.9 (16)				
	Cerro Gordo	1,724	369.8 (54)	264.4 (27)	Muscatine	1,111	267.6 (89)	250.5 (47)				
	Clinton	2,131	420.9 (30)	331.3 (04)	Plymouth	843	343.1 (61)	255.4 (39)				
	Des Moines	1,367	321.3 (73)	240.3 (57)	Sioux	744	236.0 (96)	189.5 (97)				
	Fayette	855	387.9 (46)	252.3 (44)	Wapello	1,368	379.5 (50)	270.2 (21)				
	Henry	676	336.5 (65)	258.0 (36)	Webster	1,700	426.7 (23)	298.2 (12)				
	Jackson	721	356.4 (55)	259.5 (33)	Winneshiek	550	259.2 (91)	196.5 (94)				
	Jasper	1,207	331.7 (70)	258.8 (35)	<b>Total</b>	22,852	349.8	261.0				
	MSA Counties	Benton	759	307.8 (80)	238.7 (62)	Linn	3,770	202.2 (97)	203.4 (90)			
Black Hawk		3,599	282.7 (85)	251.6 (46)	Madison	417	305.7 (81)	223.0 (78)				
Bremer		817	350.9 (60)	251.7 (45)	Mills	456	323.5 (72)	303.3 (08)				
Dallas		917	243.0 (93)	239.9 (58)	Polk	8,752	240.2 (94)	263.9 (28)				
Dubuque		2,752	309.4 (78)	259.1 (34)	Pottawattamie	2,684	312.3 (75)	301.3 (09)				
Grundy		410	334.0 (67)	200.9 (92)	Scott	3,892	247.2 (92)	265.4 (24)				
Guthrie		316	280.2 (86)	172.7 (99)	Story	1,333	170.2 (98)	198.9 (93)				
Harrison		796	516.6 (06)	331.6 (03)	Warren	938	236.3 (95)	243.3 (52)				
Johnson		1,259	116.9 (99)	185.5 (98)	Washington	700	341.0 (63)	215.1 (84)				
Jones		558	275.0 (88)	215.6 (83)	Woodbury	3,112	301.2 (82)	273.7 (17)				
					<b>Total</b>	38,237	249.5	247.8				
<b>State Total</b>		89,568	309.5	250.2								

<sup>1</sup>Rates per 100,000 population<sup>2</sup>Adjusted to year 2000 population<sup>3</sup>Rank among 99 counties

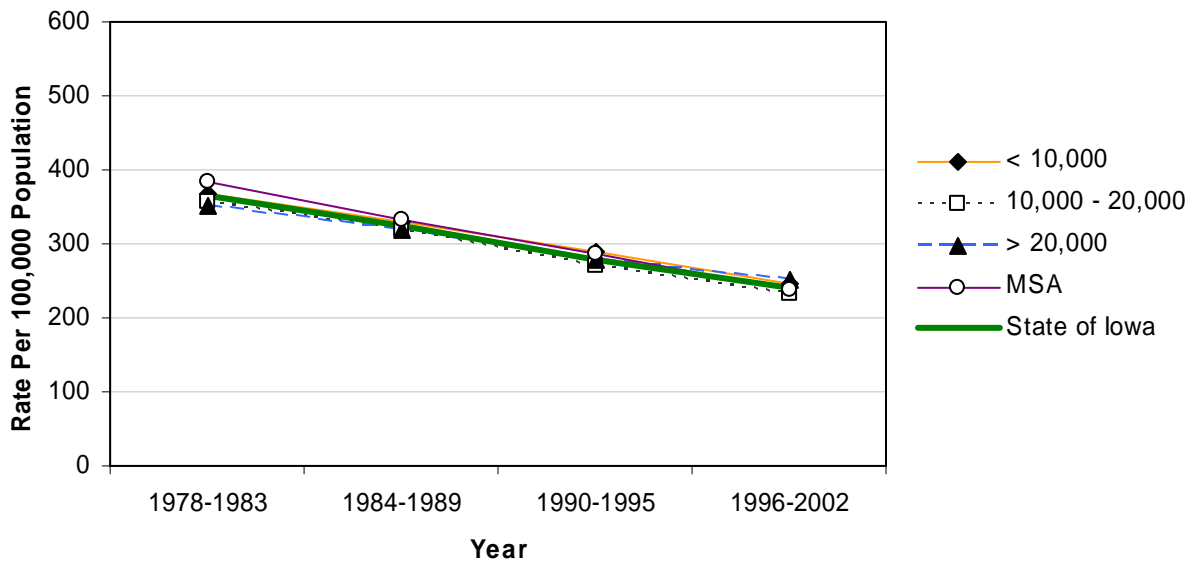
Source: Iowa Department of Public Health via NCHS and NCI's SEER\*Stat Program

## Heart Disease Mortality by County Group 1978-2002

### Crude Rates



### Age-Adjusted Rates



## Stroke Mortality 1993-2002

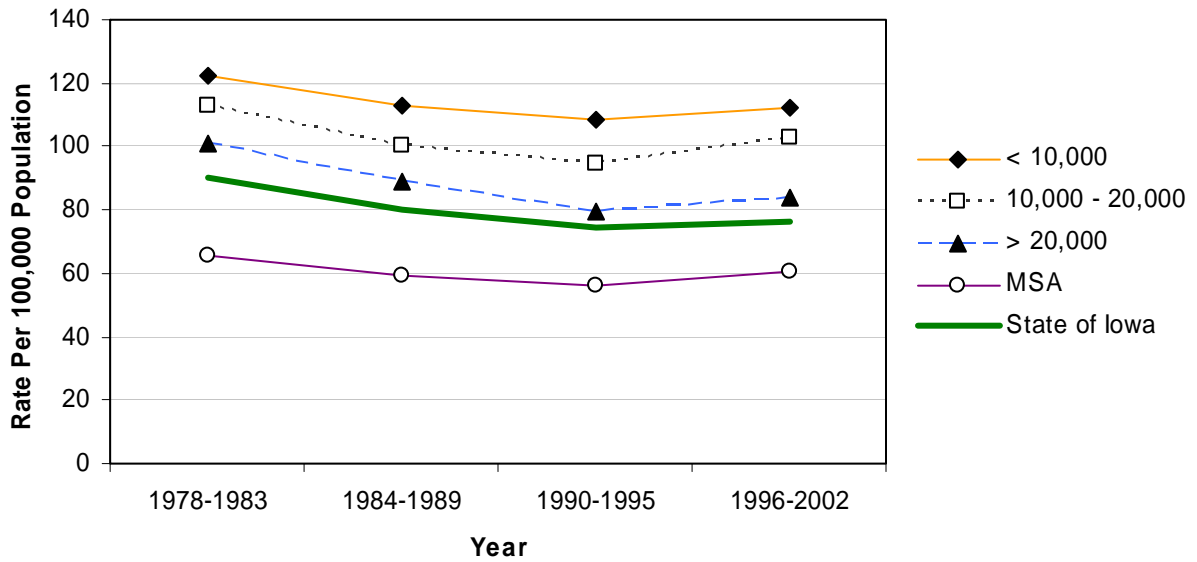
	County	#	Crude <sup>1</sup> (Rank <sup>3</sup> )	Adjusted <sup>1,2</sup> (Rank <sup>3</sup> )	County	#	Crude <sup>1</sup> (Rank <sup>3</sup> )	Adjusted <sup>1,2</sup> (Rank <sup>3</sup> )	
	Counties with 2004 Population < 10,000	Adair	77	93.0 (46)	47.2 (89)	Monona	116	115.8 (17)	53.3 (67)
Adams		51	113.0 (20)	64.6 (28)	Monroe	87	107.8 (26)	63.4 (29)	
Audubon		82	119.4 (16)	54.1 (64)	Osceola	57	80.5 (68)	48.2 (85)	
Clarke		83	94.2 (44)	59.8 (43)	Palo Alto	148	144.7 (03)	75.6 (08)	
Davis		71	83.5 (57)	53.3 (67)	Pocahontas	125	141.3 (06)	71.7 (13)	
Decatur		83	97.6 (40)	61.6 (34)	Ringgold	55	101.6 (37)	50.2 (79)	
Fremont		111	137.9 (07)	79.3 (05)	Taylor	74	105.9 (29)	51.2 (77)	
Howard		112	112.6 (21)	58.0 (51)	Van Buren	82	105.9 (29)	61.1 (37)	
Ida		83	103.8 (33)	58.0 (51)	Wayne	108	157.9 (02)	72.2 (11)	
Lucas		62	66.3 (84)	39.3 (98)	Worth	104	131.3 (09)	73.7 (10)	
					<b>Total</b>	<b>1,771</b>	<b>110.7</b>	<b>59.8</b>	
Counties with 2004 Population 10,000 – 20,000		Allamakee	190	131.3 (09)	80.9 (03)	Hardin	208	110.3 (22)	58.1 (50)
		Appanoose	115	83.9 (56)	48.5 (84)	Humboldt	75	72.1 (79)	41.4 (97)
	Butler	210	136.4 (08)	76.7 (06)	Iowa	177	114.9 (19)	71.4 (14)	
	Calhoun	139	123.3 (13)	60.6 (39)	Jefferson	158	96.5 (42)	74.5 (09)	
	Cass	182	122.8 (15)	65.3 (27)	Keokuk	94	82.1 (62)	45.2 (92)	
	Cedar	192	106.9 (28)	71.1 (16)	Kossuth	201	115.5 (18)	66.9 (23)	
	Cherokee	130	97.6 (40)	57.2 (55)	Louisa	91	75.4 (76)	60.8 (38)	
	Chickasaw	103	78.1 (72)	50.6 (78)	Lyon	117	99.3 (38)	61.4 (35)	
	Clay	145	82.9 (60)	54.0 (65)	Mitchell	118	108.1 (25)	52.9 (71)	
	Clayton	205	109.1 (24)	68.8 (20)	Montgomery	189	160.0 (01)	84.9 (01)	
	Crawford	116	68.9 (81)	47.3 (88)	O'Brien	152	99.2 (39)	52.4 (73)	
	Delaware	121	65.9 (85)	53.7 (66)	Page	186	109.7 (23)	62.0 (33)	
	Dickinson	146	91.1 (49)	55.3 (59)	Poweshiek	239	126.3 (12)	79.5 (04)	
	Emmet	86	76.7 (74)	45.2 (92)	Sac	168	143.1 (05)	69.1 (19)	
	Floyd	161	95.1 (43)	54.3 (63)	Shelby	105	79.7 (71)	45.1 (94)	
	Franklin	113	103.7 (34)	59.8 (43)	Tama	159	88.5 (51)	53.3 (67)	
	Greene	148	143.6 (04)	68.8 (20)	Union	105	85.1 (55)	52.2 (75)	
	Hamilton	83	50.8 (95)	35.3 (99)	Winnebago	152	129.7 (11)	70.7 (18)	
Hancock	130	107.7 (27)	65.7 (26)	Wright	177	122.9 (14)	60.2 (41)		
				<b>Total</b>	<b>5,586</b>	<b>101.9</b>	<b>60.2</b>		
Counties with 2004 Population > 20,000	Boone	206	79.8 (70)	52.4 (73)	Lee	311	81.0 (65)	59.7 (46)	
	Buchanan	143	67.8 (82)	56.1 (57)	Mahaska	178	80.3 (69)	56.6 (56)	
	Buena Vista	165	80.8 (67)	52.1 (76)	Marion	269	85.2 (54)	60.0 (42)	
	Carroll	195	90.6 (50)	54.6 (62)	Marshall	365	93.5 (45)	66.9 (23)	
	Cerro Gordo	489	104.9 (32)	72.0 (12)	Muscatine	271	65.3 (86)	60.3 (40)	
	Clinton	391	77.2 (73)	59.8 (43)	Plymouth	199	81.0 (65)	57.4 (54)	
	Des Moines	349	82.0 (63)	59.2 (47)	Sioux	197	62.5 (89)	49.1 (82)	
	Fayette	228	103.4 (35)	62.4 (31)	Wapello	371	102.9 (36)	68.4 (22)	
	Henry	212	105.5 (31)	76.5 (07)	Webster	368	92.4 (47)	61.4 (35)	
	Jackson	168	83.0 (59)	58.3 (49)	Winneshiek	141	66.5 (83)	47.6 (86)	
	Jasper	251	69.0 (80)	52.7 (72)	<b>Total</b>	<b>5,467</b>	<b>83.7</b>	<b>60.0</b>	
	MSA Counties	Benton	133	53.9 (94)	41.8 (95)	Linn	1,023	54.9 (93)	54.9 (61)
Black Hawk		1,044	82.0 (63)	71.4 (14)	Madison	118	86.5 (52)	57.9 (53)	
Bremer		194	83.3 (58)	58.5 (48)	Mills	69	48.9 (96)	45.9 (90)	
Dallas		243	64.4 (88)	62.3 (32)	Polk	1,642	45.1 (97)	49.4 (81)	
Dubuque		769	86.5 (52)	70.9 (17)	Pottawattamie	489	56.9 (91)	55.2 (60)	
Grundy		113	92.0 (48)	53.1 (70)	Scott	1,187	75.4 (76)	81.5 (02)	
Guthrie		93	82.5 (61)	47.6 (86)	Story	341	43.5 (98)	49.9 (80)	
Harrison		116	75.3 (78)	49.1 (82)	Warren	256	64.5 (87)	66.4 (25)	
Johnson		423	39.3 (99)	62.8 (30)	Washington	155	75.5 (75)	45.3 (91)	
Jones		112	55.2 (92)	41.7 (96)	Woodbury	641	62.0 (90)	55.4 (58)	
					<b>Total</b>	<b>9,161</b>	<b>59.8</b>	<b>58.6</b>	
<b>State Total</b>		<b>21,985</b>	<b>76.0</b>	<b>59.5</b>					

<sup>1</sup>Rates per 100,000 population<sup>2</sup>Adjusted to year 2000 population<sup>3</sup>Rank among 99 counties

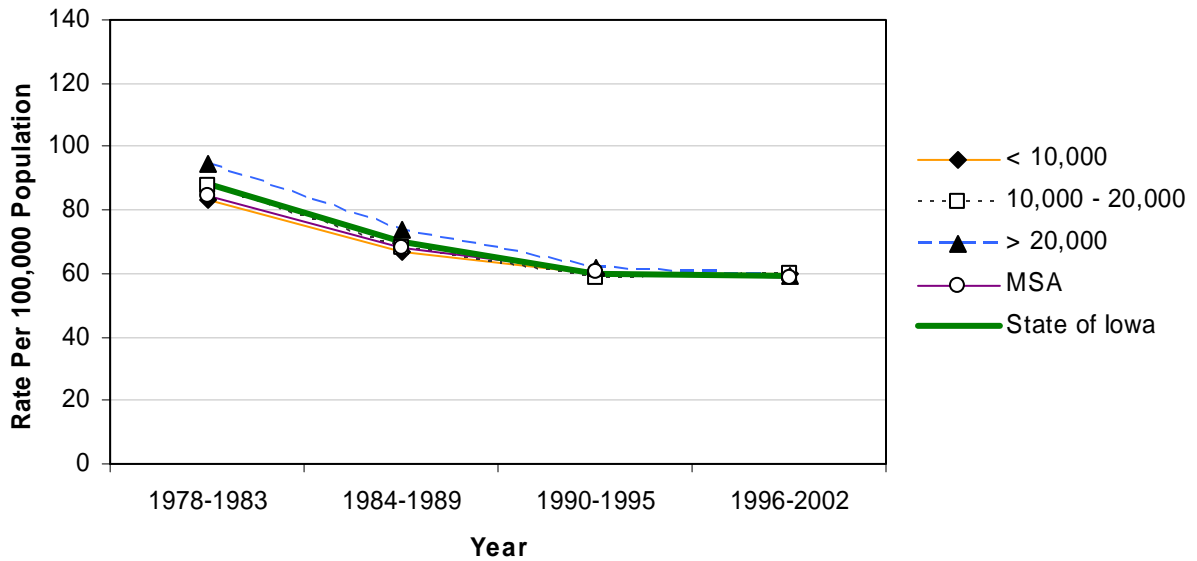
Source: Iowa Department of Public Health via NCHS and NCI's SEER\*Stat Program

## Stroke Mortality by County Group 1978-2002

### Crude Rates



### Age-Adjusted Rates



## Chronic Obstructive Pulmonary Disease Mortality 1993-2002

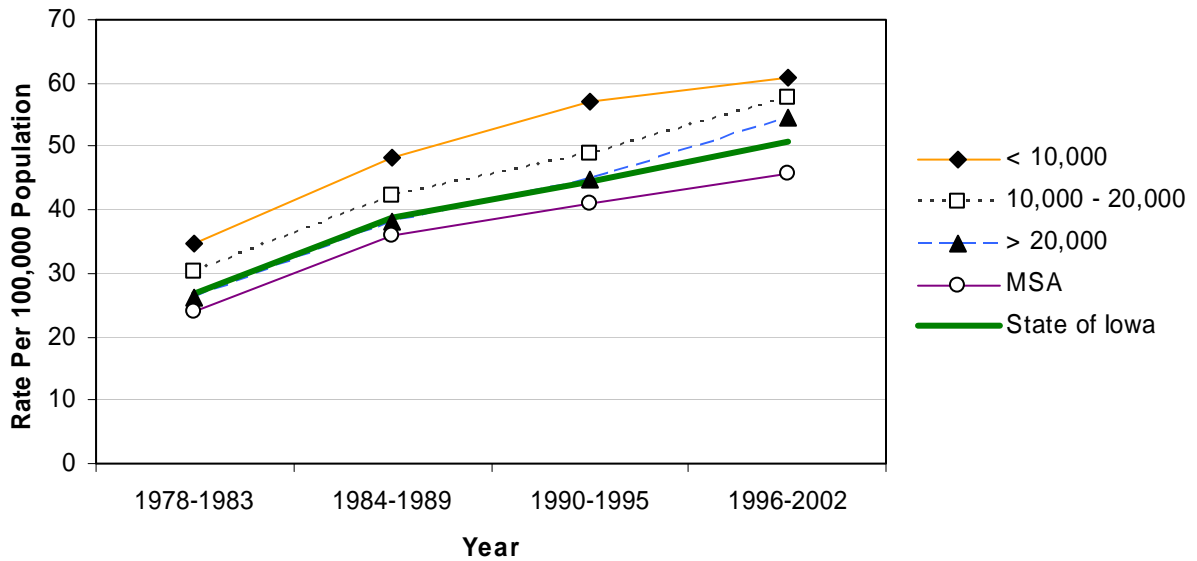
	County	#	Crude <sup>1</sup> (Rank <sup>3</sup> )	Adjusted <sup>1,2</sup> (Rank <sup>3</sup> )	County	#	Crude <sup>1</sup> (Rank <sup>3</sup> )	Adjusted <sup>1,2</sup> (Rank <sup>3</sup> )	
	Counties with 2004 Population < 10,000	Adair	48	58.0 (35)	31.7 (75)	Monona	97	96.9 (01)	52.0 (07)
Adams		24	53.2 (48)	30.7 (79)	Monroe	53	65.7 (15)	42.1 (28)	
Audubon		51	74.3 (08)	36.5 (56)	Osceola	24	33.9 (95)	21.9 (99)	
Clarke		41	46.5 (73)	32.7 (72)	Palo Alto	75	73.4 (11)	40.3 (33)	
Davis		39	45.8 (74)	30.3 (81)	Pocahontas	46	52.0 (52)	30.2 (82)	
Decatur		43	50.6 (58)	37.7 (49)	Ringgold	40	73.9 (10)	38.4 (44)	
Fremont		76	94.4 (03)	58.1 (03)	Taylor	57	81.6 (06)	41.2 (30)	
Howard		57	57.3 (38)	33.0 (69)	Van Buren	39	50.4 (59)	32.0 (74)	
Ida		52	65.1 (19)	37.8 (48)	Wayne	39	57.0 (39)	31.3 (77)	
Lucas		45	48.2 (66)	31.4 (76)	Worth	44	55.6 (41)	34.0 (62)	
					<b>Total</b>	990	61.9	36.7	
Counties with 2004 Population 10,000 – 20,000		Allamakee	65	44.9 (77)	29.8 (84)	Hardin	103	54.6 (43)	31.3 (77)
		Appanoose	65	47.4 (70)	29.3 (86)	Humboldt	65	62.4 (24)	38.5 (42)
	Butler	95	61.7 (27)	37.7 (49)	Iowa	77	50.0 (61)	35.5 (57)	
	Calhoun	75	66.5 (13)	39.2 (37)	Jefferson	65	39.7 (87)	34.3 (60)	
	Cass	131	88.4 (04)	54.1 (06)	Keokuk	70	61.1 (28)	38.2 (46)	
	Cedar	104	57.9 (36)	42.5 (27)	Kossuth	87	50.0 (61)	30.1 (83)	
	Cherokee	80	60.1 (31)	38.4 (44)	Louisa	45	37.3 (93)	32.9 (70)	
	Chickasaw	86	65.2 (18)	45.1 (21)	Lyon	39	33.1 (96)	22.1 (98)	
	Clay	109	62.3 (26)	44.5 (23)	Mitchell	48	44.0 (80)	23.9 (96)	
	Clayton	110	58.6 (33)	38.8 (39)	Montgomery	113	95.6 (02)	60.2 (02)	
	Crawford	91	54.0 (44)	37.1 (53)	O'Brien	99	64.6 (22)	35.4 (58)	
	Delaware	82	44.7 (78)	37.3 (52)	Page	126	74.3 (08)	45.5 (19)	
	Dickinson	86	53.7 (46)	33.1 (68)	Poweshiek	118	62.4 (24)	45.0 (22)	
	Emmet	44	39.2 (88)	26.9 (93)	Sac	80	68.1 (12)	38.2 (46)	
	Floyd	91	53.8 (45)	33.7 (65)	Shelby	62	47.0 (71)	28.5 (88)	
	Franklin	49	45.0 (76)	27.9 (92)	Tama	92	51.2 (54)	33.5 (66)	
	Greene	67	65.0 (20)	33.8 (64)	Union	71	57.5 (37)	38.5 (42)	
	Hamilton	73	44.7 (78)	29.5 (85)	Winnebago	44	37.5 (92)	25.4 (95)	
	Hancock	47	38.9 (89)	26.0 (94)	Wright	85	59.0 (32)	32.8 (71)	
				<b>Total</b>	3,039	55.4	35.8		
Counties with 2004 Population > 20,000	Boone	138	53.4 (47)	38.7 (40)	Lee	196	51.1 (56)	39.3 (36)	
	Buchanan	111	52.7 (50)	45.3 (20)	Mahaska	90	40.6 (86)	30.5 (80)	
	Buena Vista	102	50.0 (61)	33.9 (63)	Marion	148	46.9 (72)	37.0 (55)	
	Carroll	141	65.5 (17)	43.1 (25)	Marshall	325	83.2 (05)	62.0 (01)	
	Cerro Gordo	265	56.8 (40)	41.4 (29)	Muscatine	220	53.0 (49)	50.7 (09)	
	Clinton	255	50.4 (59)	39.6 (34)	Plymouth	106	43.1 (83)	33.2 (67)	
	Des Moines	180	42.3 (85)	32.7 (72)	Sioux	89	28.2 (97)	23.2 (97)	
	Fayette	134	60.8 (29)	39.5 (35)	Wapello	238	66.0 (14)	47.2 (15)	
	Henry	91	45.3 (75)	34.8 (59)	Webster	257	64.5 (23)	45.9 (16)	
	Jackson	133	65.7 (15)	48.4 (13)	Winneshiek	79	37.2 (94)	28.5 (88)	
	Jasper	159	43.7 (81)	34.1 (61)	<b>Total</b>	3,457	52.9	40.2	
	MSA Counties	Benton	119	48.3 (65)	38.7 (40)	Linn	925	49.6 (64)	50.7 (09)
Black Hawk		646	50.7 (57)	45.6 (17)	Madison	65	47.7 (69)	37.5 (51)	
Bremer		88	37.8 (91)	28.4 (90)	Mills	74	52.5 (51)	50.6 (11)	
Dallas		162	42.9 (84)	43.5 (24)	Polk	1,399	38.4 (90)	42.8 (26)	
Dubuque		428	48.1 (67)	40.9 (32)	Pottawattamie	500	58.2 (34)	54.7 (05)	
Grundy		59	48.1 (67)	28.9 (87)	Scott	807	51.3 (53)	55.1 (04)	
Guthrie		68	60.3 (30)	37.1 (53)	Story	182	23.2 (99)	28.0 (91)	
Harrison		100	64.9 (21)	45.6 (17)	Warren	173	43.6 (82)	47.3 (14)	
Johnson		258	24.0 (98)	39.2 (37)	Washington	157	76.5 (07)	48.8 (12)	
Jones		104	51.2 (54)	41.2 (30)	Woodbury	575	55.6 (41)	51.6 (08)	
					<b>Total</b>	6,889	44.9	45.4	
<b>State Total</b>		14,375	49.7	41.2					

<sup>1</sup>Rates per 100,000 population<sup>2</sup>Adjusted to year 2000 population<sup>3</sup>Rank among 99 counties

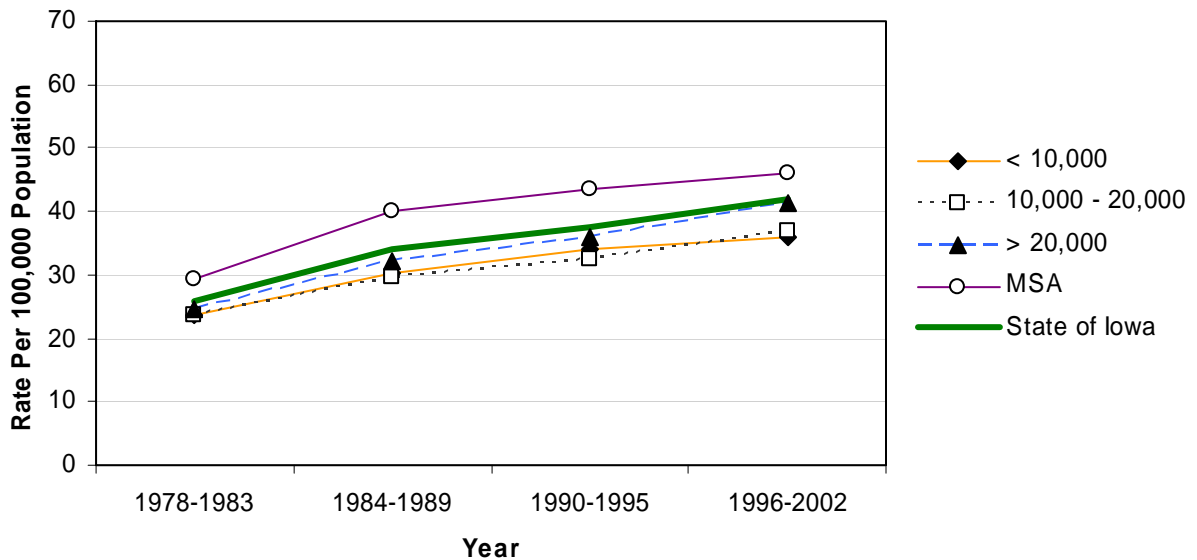
Source: Iowa Department of Public Health via NCHS and NCI's SEER\*Stat Program

## Chronic Obstructive Pulmonary Disease Mortality by County Group 1978-2002

### Crude Rates



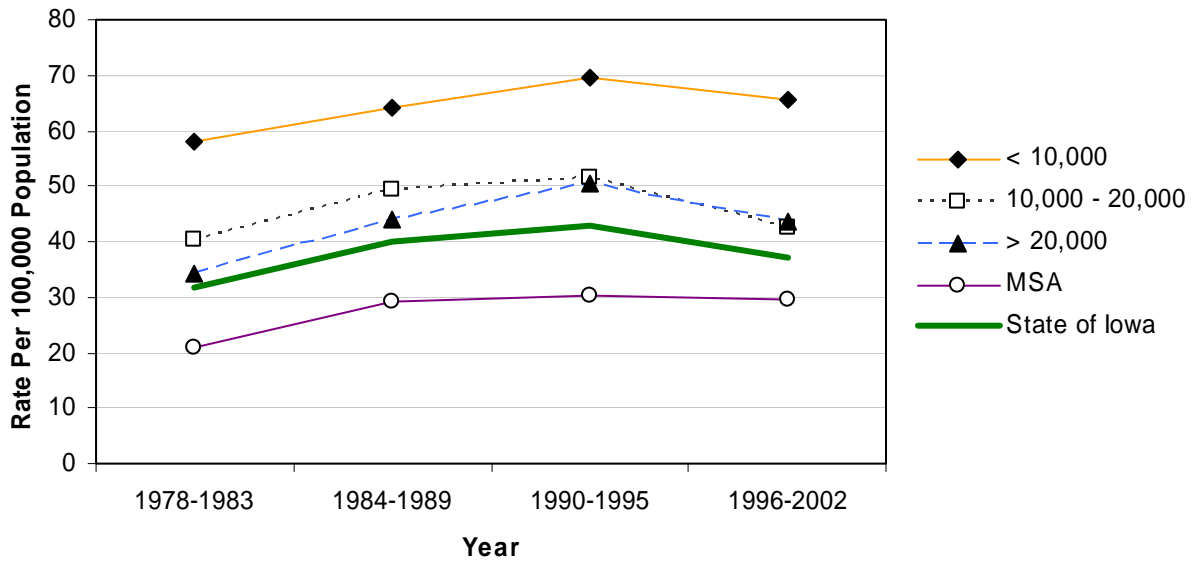
### Age-Adjusted Rates



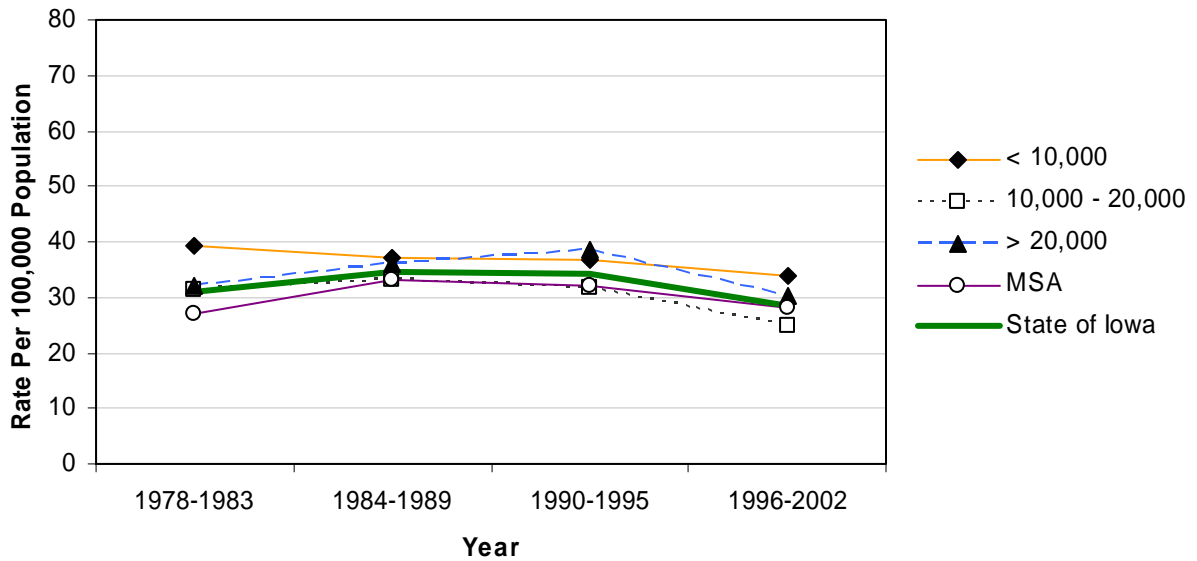


# Pneumonia/Influenza Mortality by County Group 1978-2002

### Crude Rates



### Age-Adjusted Rates



## Diabetes Mellitus Mortality 1993-2002

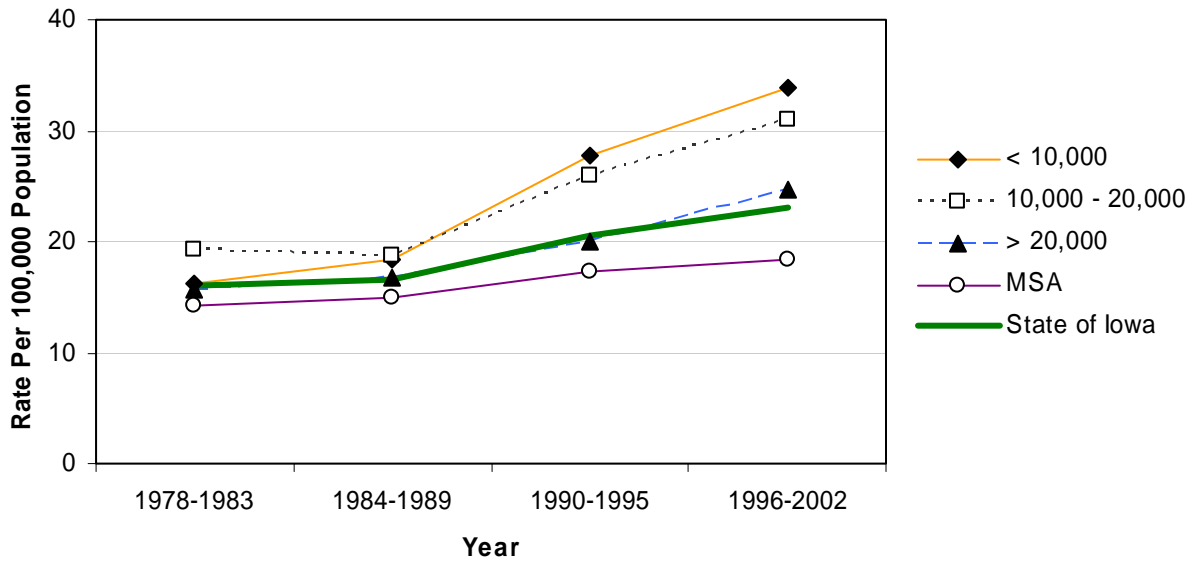
	County	#	Crude <sup>1</sup> (Rank <sup>3</sup> )	Adjusted <sup>1,2</sup> (Rank <sup>3</sup> )	County	#	Crude <sup>1</sup> (Rank <sup>3</sup> )	Adjusted <sup>1,2</sup> (Rank <sup>3</sup> )	
	Counties with 2004 Population < 10,000	Adair	25	30.2 (33)	16.2 (72)	Monona	58	57.9 (01)	31.0 (03)
Adams		12	26.6 (48)	19.1 (52)	Monroe	9	11.2 (98)	7.8 (99)	
Audubon		27	39.3 (13)	22.6 (28)	Osceola	18	25.4 (53)	17.3 (60)	
Clarke		18	20.4 (77)	13.1 (90)	Palo Alto	36	35.2 (23)	23.1 (24)	
Davis		37	43.5 (08)	30.2 (04)	Pocahontas	22	24.9 (55)	15.6 (76)	
Decatur		15	17.6 (86)	11.9 (94)	Ringgold	25	46.2 (07)	26.3 (10)	
Fremont		27	33.6 (25)	21.3 (35)	Taylor	30	42.9 (09)	25.6 (13)	
Howard		27	27.2 (47)	16.2 (72)	Van Buren	33	42.6 (10)	26.7 (09)	
Ida		37	46.3 (06)	26.2 (11)	Wayne	36	52.6 (02)	27.0 (08)	
Lucas		17	18.2 (85)	10.5 (97)	Worth	18	22.7 (69)	13.2 (89)	
					<b>Total</b>	527	32.9	20.1	
Counties with 2004 Population 10,000 – 20,000		Allamakee	33	22.8 (67)	15.0 (82)	Hardin	63	33.4 (26)	19.3 (48)
		Appanoose	34	24.8 (56)	15.2 (81)	Humboldt	29	27.9 (44)	19.1 (52)
	Butler	42	27.3 (46)	16.5 (67)	Iowa	51	33.1 (27)	23.0 (25)	
	Calhoun	45	39.9 (12)	21.2 (37)	Jefferson	46	28.1 (42)	24.8 (17)	
	Cass	62	41.8 (11)	24.7 (18)	Keokuk	43	37.5 (16)	25.1 (15)	
	Cedar	54	30.1 (35)	21.8 (33)	Kossuth	41	23.6 (61)	15.6 (76)	
	Cherokee	39	29.3 (41)	19.4 (47)	Louisa	24	19.9 (79)	16.4 (69)	
	Chickasaw	22	16.7 (88)	11.3 (96)	Lyon	30	25.5 (51)	17.2 (63)	
	Clay	48	27.4 (45)	20.3 (41)	Mitchell	27	24.7 (57)	14.2 (84)	
	Clayton	56	29.8 (38)	22.2 (29)	Montgomery	55	46.6 (04)	28.6 (05)	
	Crawford	65	38.6 (14)	26.0 (12)	O'Brien	45	29.4 (40)	17.2 (63)	
	Delaware	38	20.7 (75)	17.4 (59)	Page	60	35.4 (22)	22.0 (30)	
	Dickinson	49	30.6 (32)	19.7 (45)	Poweshiek	44	23.3 (62)	17.7 (58)	
	Emmet	52	46.4 (05)	27.8 (06)	Sac	42	35.8 (20)	21.3 (35)	
	Floyd	33	19.5 (80)	12.9 (91)	Shelby	32	24.3 (59)	15.6 (76)	
	Franklin	28	25.7 (50)	16.3 (71)	Tama	62	34.5 (24)	23.2 (23)	
	Greene	17	16.5 (89)	12.0 (93)	Union	44	35.7 (21)	24.6 (20)	
	Hamilton	82	50.2 (03)	33.9 (01)	Winnebago	35	29.9 (37)	19.9 (43)	
	Hancock	32	26.5 (49)	18.1 (56)	Wright	54	37.5 (16)	22.0 (30)	
				<b>Total</b>	1,658	30.2	19.9		
Counties with 2004 Population > 20,000	Boone	78	30.2 (33)	22.7 (27)	Lee	86	22.4 (70)	17.0 (65)	
	Buchanan	80	38.0 (15)	32.2 (02)	Mahaska	48	21.7 (73)	17.3 (60)	
	Buena Vista	67	32.8 (29)	23.0 (25)	Marion	75	23.7 (60)	18.8 (54)	
	Carroll	45	20.9 (74)	13.9 (86)	Marshall	129	33.0 (28)	25.6 (13)	
	Cerro Gordo	115	24.7 (57)	19.2 (50)	Muscatine	68	16.4 (90)	15.7 (75)	
	Clinton	103	20.3 (78)	16.5 (67)	Plymouth	77	31.3 (31)	24.4 (21)	
	Des Moines	66	15.5 (93)	12.1 (92)	Sioux	80	25.4 (53)	21.1 (39)	
	Fayette	62	28.1 (42)	19.3 (48)	Wapello	134	37.2 (18)	27.1 (07)	
	Henry	46	22.9 (66)	19.2 (50)	Webster	51	12.8 (96)	9.9 (98)	
	Jackson	37	18.3 (84)	13.7 (87)	Winneshiek	47	22.2 (72)	17.3 (60)	
	Jasper	71	19.5 (80)	15.4 (80)	<b>Total</b>	1,565	24.0	18.7	
	MSA Counties	Benton	63	25.5 (51)	21.2 (37)	Linn	357	19.1 (82)	19.5 (46)
Black Hawk		285	22.4 (70)	20.3 (41)	Madison	41	30.1 (35)	23.7 (22)	
Bremer		39	16.8 (87)	13.4 (88)	Mills	23	16.3 (92)	15.6 (76)	
Dallas		62	16.4 (90)	16.4 (69)	Polk	562	15.4 (94)	16.8 (66)	
Dubuque		183	20.6 (76)	17.8 (57)	Pottawattamie	198	23.0 (64)	22.0 (30)	
Grundy		28	22.8 (67)	14.5 (83)	Scott	234	14.9 (95)	15.9 (74)	
Guthrie		26	23.1 (63)	14.0 (85)	Story	76	9.7 (99)	11.6 (95)	
Harrison		56	36.3 (19)	24.7 (18)	Warren	75	18.9 (83)	19.9 (43)	
Johnson		128	11.9 (97)	18.8 (54)	Washington	61	29.7 (39)	20.5 (40)	
Jones		65	32.0 (30)	25.0 (16)	Woodbury	238	23.0 (64)	21.4 (34)	
					<b>Total</b>	2,800	18.3	18.4	
<b>State Total</b>		6,550	22.6	19.0					

<sup>1</sup>Rates per 100,000 population<sup>2</sup>Adjusted to year 2000 population<sup>3</sup>Rank among 99 counties

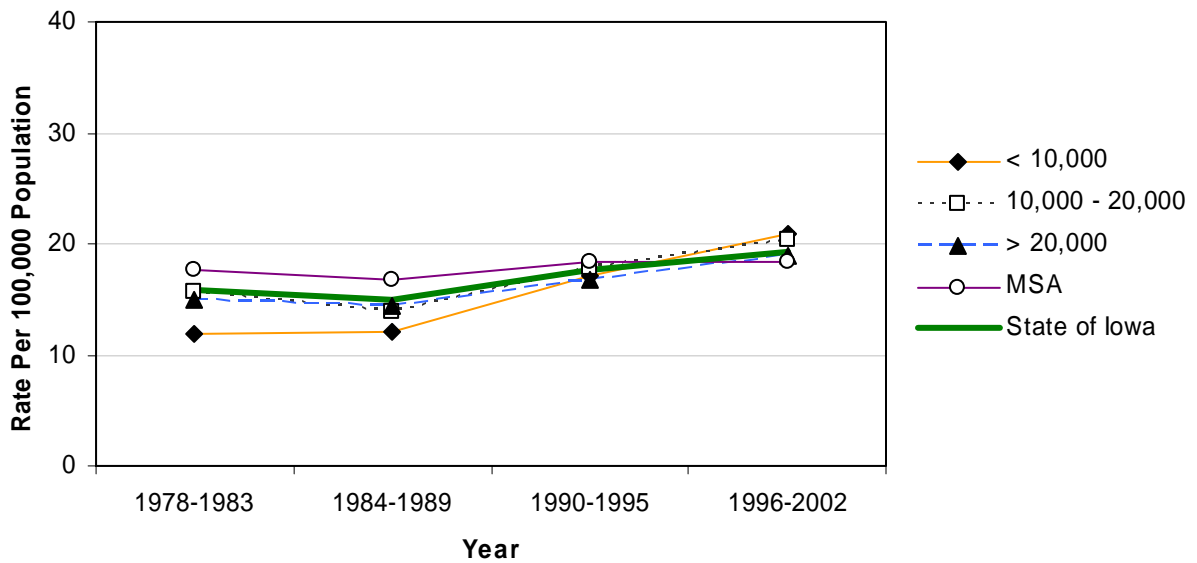
Source: Iowa Department of Public Health via NCHS and NCI's SEER\*Stat Program

## Diabetes Mellitus Mortality by County Group 1978-2002

### Crude Rates



### Age-Adjusted Rates



## Atherosclerosis Mortality 1993-2002

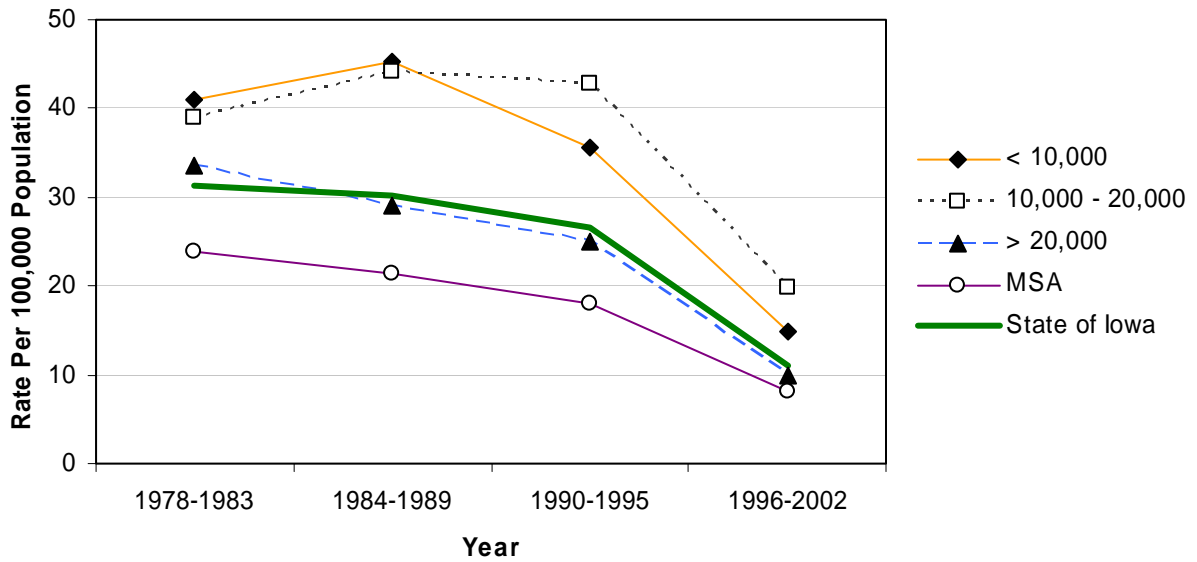
	County	#	Crude <sup>1</sup>	Adjusted <sup>1,2</sup>	County	#	Crude <sup>1</sup>	Adjusted <sup>1,2</sup>	
Counties with 2004 Population < 10,000	Adair	36	43.5	18.0	Monona	12	12.0	4.8	
	Adams	*	*	*	Monroe	40	49.6	27.4	
	Audubon	21	30.6	13.7	Osceola	*	*	*	
	Clarke	*	*	*	Palo Alto	6	5.9	2.8	
	Davis	6	7.1	4.1	Pocahontas	24	27.1	13.8	
	Decatur	13	15.3	9.0	Ringgold	*	*	*	
	Fremont	7	8.7	5.5	Taylor	7	10.0	4.1	
	Howard	7	7.0	3.7	Van Buren	25	32.3	16.9	
	Ida	*	*	*	Wayne	25	36.6	15.5	
	Lucas	10	10.7	5.9	Worth	5	6.3	3.6	
					<b>Total</b>	255	15.9	8.0	
	Counties with 2004 Population 10,000 – 20,000	Allamakee	49	33.9	20.7	Hardin	12	6.4	4.2
		Appanoose	24	17.5	9.2	Humboldt	8	7.7	4.2
Butler		46	29.9	16.3	Iowa	16	10.4	5.9	
Calhoun		52	46.1	20.0	Jefferson	15	9.2	7.0	
Cass		51	34.4	16.6	Keokuk	9	7.9	4.6	
Cedar		14	7.8	5.0	Kossuth	134	77.0	43.6	
Cherokee		55	41.3	23.8	Louisa	10	8.3	6.8	
Chickasaw		17	12.9	8.0	Lyon	*	*	*	
Clay		13	7.4	4.7	Mitchell	15	13.7	6.8	
Clayton		28	14.9	9.2	Montgomery	27	22.9	10.6	
Crawford		11	6.5	4.1	O'Brien	20	13.0	6.4	
Delaware		16	8.7	6.8	Page	8	4.7	2.5	
Dickinson		13	8.1	4.8	Poweshiek	9	4.8	2.8	
Emmet		*	*	*	Sac	106	90.3	41.7	
Floyd		152	89.8	47.9	Shelby	11	8.3	4.3	
Franklin		134	123.0	67.9	Tama	12	6.7	3.6	
Greene		21	20.4	9.9	Union	14	11.3	6.3	
Hamilton	16	9.8	6.1	Winnebago	9	7.7	4.2		
Hancock	6	5.0	3.3	Wright	11	7.6	3.5		
				<b>Total</b>	1,169	21.3	12.0		
Counties with 2004 Population > 20,000	Boone	42	16.3	9.9	Lee	31	8.1	5.7	
	Buchanan	16	7.6	6.0	Mahaska	77	34.7	23.6	
	Buena Vista	37	18.1	11.1	Marion	23	7.3	4.8	
	Carroll	30	13.9	8.1	Marshall	44	11.3	7.8	
	Cerro Gordo	34	7.3	4.9	Muscatine	23	5.5	4.9	
	Clinton	43	8.5	6.4	Plymouth	27	11.0	7.7	
	Des Moines	19	4.5	3.1	Sioux	13	4.1	3.1	
	Fayette	16	7.3	4.2	Wapello	19	5.3	3.5	
	Henry	15	7.5	4.9	Webster	22	5.5	3.5	
	Jackson	66	32.6	22.2	Winneshiek	22	10.4	7.2	
	Jasper	57	15.7	11.8	<b>Total</b>	676	10.3	7.1	
MSA Counties	Benton	*	*	*	Linn	163	8.7	8.6	
	Black Hawk	64	5.0	4.3	Madison	*	*	*	
	Bremer	19	8.2	5.6	Mills	11	7.8	7.1	
	Dallas	26	6.9	6.6	Polk	179	4.9	5.3	
	Dubuque	130	14.6	11.8	Pottawattamie	50	5.8	5.7	
	Grundy	6	4.9	2.6	Scott	145	9.2	9.9	
	Guthrie	275	243.9	132.5	Story	32	4.1	4.7	
	Harrison	16	10.4	7.1	Warren	32	8.1	7.9	
	Johnson	58	5.4	8.7	Washington	53	25.8	13.9	
	Jones	9	4.4	3.4	Woodbury	76	7.4	6.4	
					<b>Total</b>	1,350	8.8	8.5	
<b>State Total</b>		3,450	11.9	9.0					

<sup>1</sup>Rates per 100,000 population<sup>2</sup>Adjusted to year 2000 population

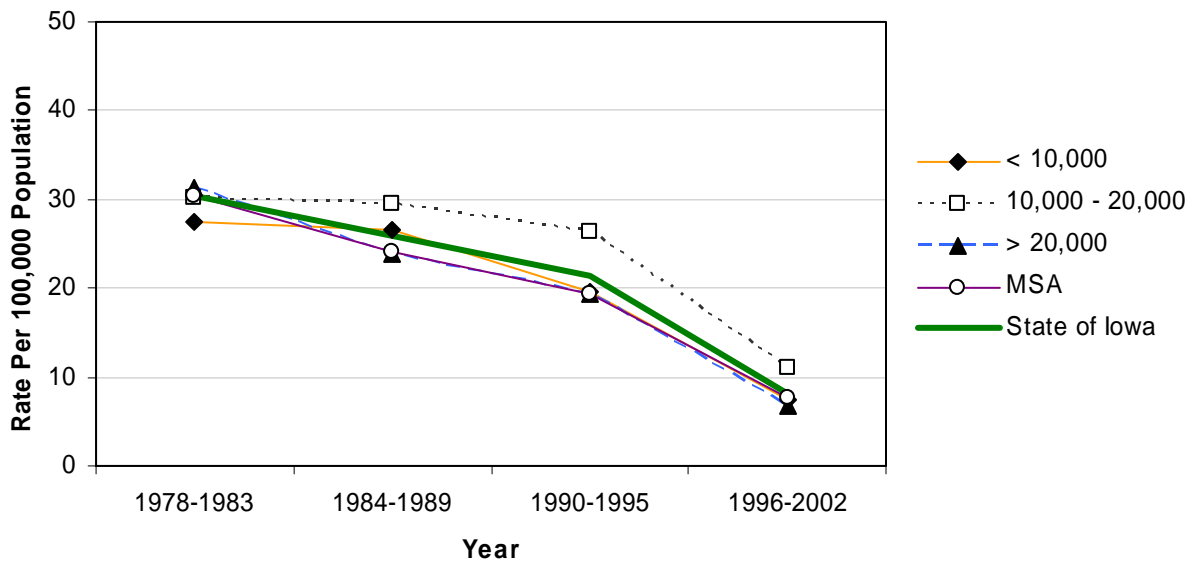
Source: Iowa Department of Public Health via NCHS and NCI's SEER\*Stat Program

## Atherosclerosis Mortality by County Group 1978-2002

### Crude Rates



### Age-Adjusted Rates



## Infectious/Parasitic Mortality 1993-2002

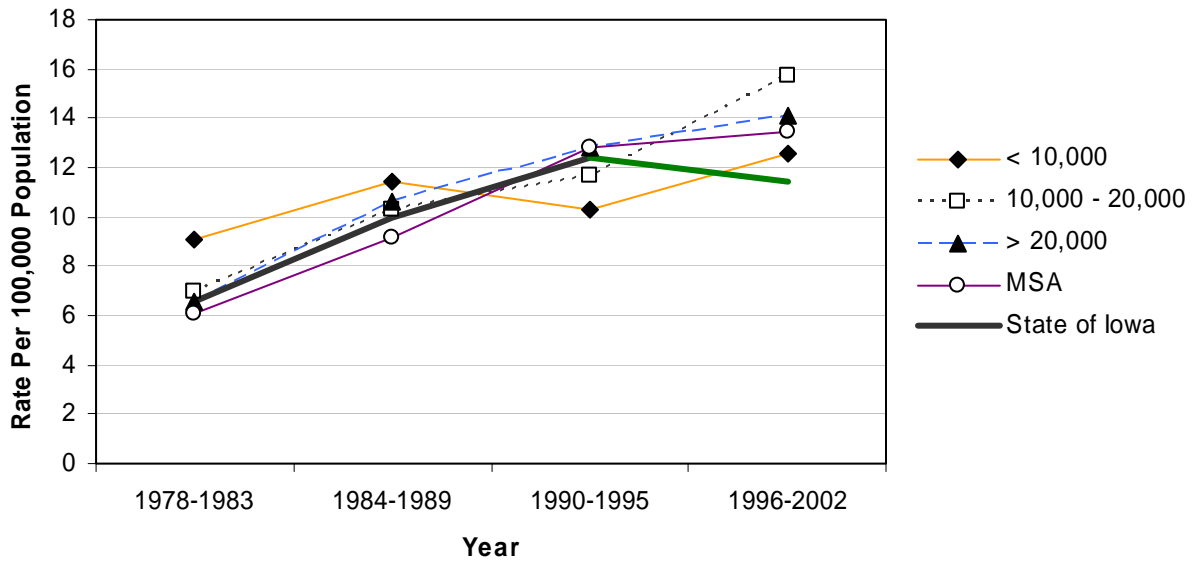
	County	#	Crude <sup>1</sup> (Rank <sup>3</sup> )	Adjusted <sup>1,2</sup> (Rank <sup>3</sup> )	County	#	Crude <sup>1</sup> (Rank <sup>3</sup> )	Adjusted <sup>1,2</sup> (Rank <sup>3</sup> )	
	Counties with 2004 Population < 10,000	Adair	12	14.5 (34)	8.9 (61)	Monona	17	17.0 (14)	10.0 (45)
Adams		5	11.1 (67)	6.9 (81)	Monroe	15	18.6 (08)	13.9 (07)	
Audubon		11	16.0 (21)	8.4 (66)	Osceola	6	8.5 (87)	5.6 (94)	
Clarke		14	15.9 (23)	10.3 (42)	Palo Alto	14	13.7 (41)	8.0 (70)	
Davis		5	5.9 (99)	6.0 (91)	Pocahontas	15	17.0 (14)	10.5 (37)	
Decatur		7	8.2 (91)	6.4 (87)	Ringgold	8	14.8 (31)	8.5 (65)	
Fremont		12	14.9 (30)	9.6 (52)	Taylor	19	27.2 (01)	16.1 (04)	
Howard		10	10.1 (77)	7.9 (74)	Van Buren	20	25.8 (02)	17.6 (02)	
Ida		6	7.5 (92)	5.6 (94)	Wayne	9	13.2 (45)	8.0 (70)	
Lucas		14	15.0 (29)	10.4 (39)	Worth	12	15.2 (27)	9.6 (52)	
					<b>Total</b>	231	14.4	9.5	
Counties with 2004 Population 10,000 – 20,000		Allamakee	17	11.7 (58)	8.1 (69)	Hardin	35	18.6 (08)	11.4 (29)
		Appanoose	21	15.3 (26)	11.8 (21)	Humboldt	7	6.7 (96)	4.8 (99)
	Butler	16	10.4 (73)	6.9 (81)	Iowa	25	16.2 (17)	11.5 (27)	
	Calhoun	21	18.6 (08)	11.1 (31)	Jefferson	18	11.0 (69)	9.4 (54)	
	Cass	19	12.8 (52)	9.0 (58)	Keokuk	21	18.3 (12)	12.0 (20)	
	Cedar	16	8.9 (85)	6.6 (85)	Kossuth	35	20.1 (07)	13.4 (11)	
	Cherokee	19	14.3 (36)	9.7 (51)	Louisa	14	11.6 (61)	10.3 (42)	
	Chickasaw	11	8.3 (90)	6.6 (85)	Lyon	8	6.8 (95)	5.0 (98)	
	Clay	17	9.7 (78)	7.7 (78)	Mitchell	10	9.2 (82)	6.2 (90)	
	Clayton	30	16.0 (21)	11.8 (21)	Montgomery	19	16.1 (18)	10.2 (44)	
	Crawford	19	11.3 (65)	8.7 (64)	O'Brien	16	10.4 (73)	5.9 (92)	
	Delaware	20	10.9 (70)	9.4 (54)	Page	36	21.2 (05)	15.2 (06)	
	Dickinson	19	11.9 (55)	8.3 (68)	Poweshiek	16	8.5 (87)	6.4 (87)	
	Emmet	15	13.4 (43)	8.9 (61)	Sac	14	11.9 (55)	8.0 (70)	
	Floyd	20	11.8 (57)	8.4 (66)	Shelby	22	16.7 (16)	11.5 (27)	
	Franklin	7	6.4 (98)	5.8 (93)	Tama	25	13.9 (38)	9.8 (48)	
	Greene	19	18.4 (11)	12.6 (16)	Union	11	8.9 (85)	6.9 (81)	
	Hamilton	35	21.4 (04)	16.1 (04)	Winnebago	20	17.1 (13)	10.4 (39)	
	Hancock	14	11.6 (61)	8.0 (70)	Wright	16	11.1 (67)	6.3 (89)	
				<b>Total</b>	723	13.2	9.3		
Counties with 2004 Population > 20,000	Boone	36	13.9 (38)	11.1 (31)	Lee	78	20.3 (06)	16.3 (03)	
	Buchanan	29	13.8 (40)	12.2 (18)	Mahaska	20	9.0 (83)	6.8 (84)	
	Buena Vista	21	10.3 (75)	8.8 (63)	Marion	39	12.3 (54)	10.0 (45)	
	Carroll	16	7.4 (93)	5.6 (94)	Marshall	63	16.1 (18)	12.9 (13)	
	Cerro Gordo	74	15.9 (23)	12.7 (14)	Muscatine	54	13.0 (49)	12.3 (17)	
	Clinton	65	12.8 (52)	10.8 (35)	Plymouth	37	15.1 (28)	11.8 (21)	
	Des Moines	99	23.3 (03)	18.7 (01)	Sioux	30	9.5 (80)	7.8 (76)	
	Fayette	32	14.5 (34)	9.9 (47)	Wapello	42	11.7 (58)	9.0 (58)	
	Henry	26	12.9 (50)	11.4 (29)	Webster	58	14.6 (33)	11.7 (24)	
	Jackson	26	12.9 (50)	10.6 (36)	Winneshiek	14	6.6 (97)	5.3 (97)	
	Jasper	35	9.6 (79)	7.9 (74)	<b>Total</b>	894	13.7	11.1	
	MSA Counties	Benton	28	11.4 (64)	9.8 (48)	Linn	216	11.6 (61)	11.7 (24)
Black Hawk		174	13.7 (41)	13.1 (12)	Madison	20	14.7 (32)	11.1 (31)	
Bremer		25	10.7 (71)	9.0 (58)	Mills	20	14.2 (37)	13.7 (10)	
Dallas		40	10.6 (72)	10.4 (39)	Polk	479	13.1 (48)	13.9 (07)	
Dubuque		91	10.2 (76)	9.1 (56)	Pottawattamie	97	11.3 (65)	11.1 (31)	
Grundy		19	15.5 (25)	10.5 (37)	Scott	208	13.2 (45)	13.9 (07)	
Guthrie		15	13.3 (44)	7.8 (76)	Story	66	8.4 (89)	9.8 (48)	
Harrison		18	11.7 (58)	9.1 (56)	Warren	28	7.1 (94)	7.3 (80)	
Johnson		97	9.0 (83)	12.2 (18)	Washington	33	16.1 (18)	11.6 (26)	
Jones		19	9.4 (81)	7.7 (78)	Woodbury	136	13.2 (45)	12.7 (14)	
					<b>Total</b>	1,829	11.9	12	
<b>State Total</b>		3,677	12.7	11.1					

<sup>1</sup>Rates per 100,000 population<sup>2</sup>Adjusted to year 2000 population<sup>3</sup>Rank among 99 counties

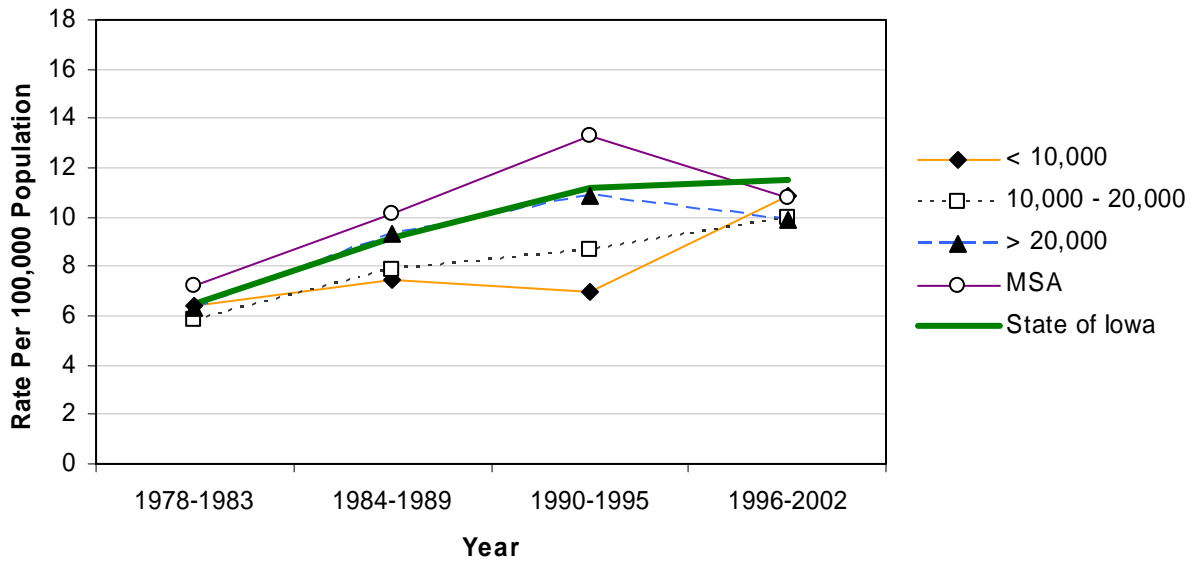
Source: Iowa Department of Public Health via NCHS and NCI's SEER\*Stat Program

## Infectious/Parasitic Mortality by County Group 1978-2002

### Crude Rates



### Age-Adjusted Rates



## Nephritis, Nephrotic Syndrome, Nephrosis Mortality 1993-2002

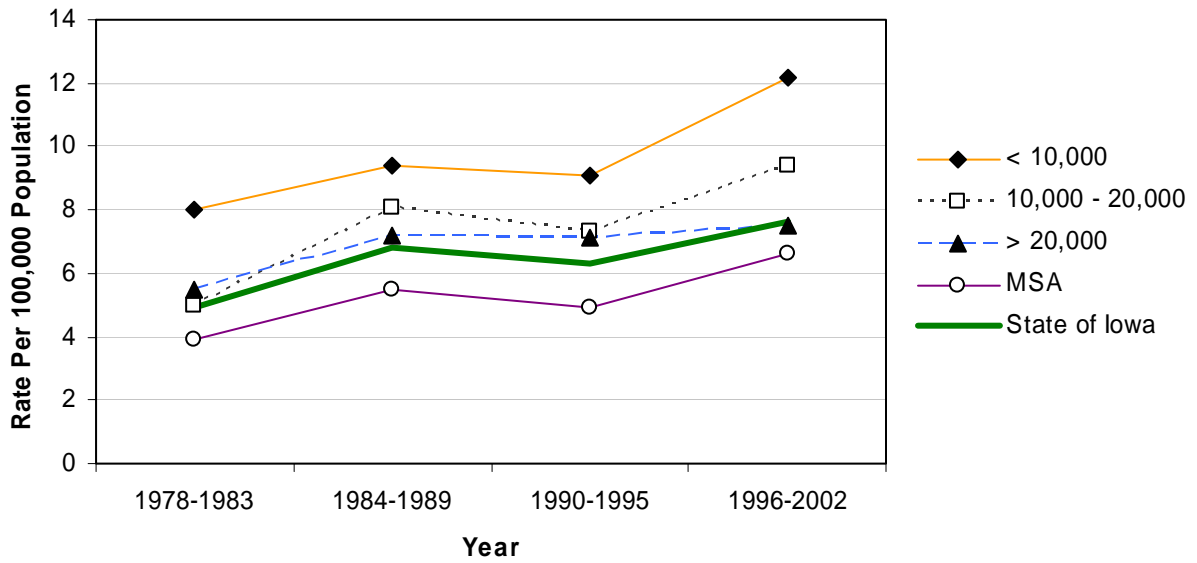
	County	#	Crude <sup>1</sup>	Adjusted <sup>1,2</sup>	County	#	Crude <sup>1</sup>	Adjusted <sup>1,2</sup>	
	Counties with 2004 Population < 10,000	Adair	10	12.1	7.1	Monona	18	18.0	8.6
Adams		7	15.5	9.7	Monroe	6	7.4	5.2	
Audubon		14	20.4	8.9	Osceola	*	*	*	
Clarke		10	11.3	6.9	Palo Alto	9	8.8	4.5	
Davis		17	20.0	13.0	Pocahontas	*	*	*	
Decatur		7	8.2	4.9	Ringgold	8	14.8	6.2	
Fremont		10	12.4	7.4	Taylor	6	8.6	5.3	
Howard		15	15.1	8.6	Van Buren	9	11.6	7.5	
Ida		10	12.5	6.6	Wayne	6	8.8	5.0	
Lucas		7	7.5	4.6	Worth	*	*	*	
					<b>Total</b>	181	11.3	6.3	
Counties with 2004 Population 10,000 – 20,000		Allamakee	14	9.7	5.7	Hardin	20	10.6	6.0
		Appanoose	11	8.0	5.6	Humboldt	10	9.6	5.5
	Butler	14	9.1	5.5	Iowa	14	9.1	6.1	
	Calhoun	8	7.1	3.5	Jefferson	7	4.3	3.3	
	Cass	13	8.8	4.7	Keokuk	17	14.8	8.3	
	Cedar	9	5.0	3.1	Kossuth	15	8.6	5.3	
	Cherokee	7	5.3	3.5	Louisa	7	5.8	4.6	
	Chickasaw	7	5.3	3.3	Lyon	12	10.2	6.1	
	Clay	17	9.7	6.7	Mitchell	6	5.5	2.6	
	Clayton	16	8.5	5.3	Montgomery	18	15.2	9.1	
	Crawford	12	7.1	4.9	O'Brien	11	7.2	4.1	
	Delaware	10	5.4	4.3	Page	26	15.3	9.4	
	Dickinson	18	11.2	6.9	Poweshiek	11	5.8	4.0	
	Emmet	16	14.3	8.7	Sac	13	11.1	5.8	
	Floyd	13	7.7	4.2	Shelby	13	9.9	6.1	
	Franklin	*	*	*	Tama	19	10.6	6.3	
	Greene	14	13.6	7.8	Union	14	11.3	6.7	
	Hamilton	16	9.8	6.8	Winnebago	12	10.2	5.8	
Hancock	*	*	*	Wright	5	3.5	1.8		
				<b>Total</b>	473	8.6	5.3		
Counties with 2004 Population > 20,000	Boone	27	10.5	7.6	Lee	38	9.9	7.4	
	Buchanan	21	10.0	8.2	Mahaska	12	5.4	3.8	
	Buena Vista	14	6.9	4.4	Marion	15	4.7	3.5	
	Carroll	13	6.0	4.4	Marshall	47	12.0	8.8	
	Cerro Gordo	22	4.7	3.5	Muscatine	20	4.8	4.6	
	Clinton	31	6.1	4.9	Plymouth	8	3.3	2.4	
	Des Moines	45	10.6	7.6	Sioux	24	7.6	6.4	
	Fayette	20	9.1	5.8	Wapello	35	9.7	7.3	
	Henry	9	4.5	3.2	Webster	30	7.5	5.2	
	Jackson	16	7.9	6.1	Winneshiek	18	8.5	6.6	
	Jasper	24	6.6	5.0	<b>Total</b>	489	7.5	5.6	
MSA Counties	Benton	8	3.2	2.5	Linn	69	3.7	3.7	
	Black Hawk	96	7.5	6.8	Madison	11	8.1	5.2	
	Bremer	19	8.2	5.5	Mills	18	12.8	12.2	
	Dallas	25	6.6	6.7	Polk	247	6.8	7.5	
	Dubuque	52	5.8	4.7	Pottawattamie	72	8.4	8.1	
	Grundy	12	9.8	6.5	Scott	87	5.5	6.0	
	Guthrie	6	5.3	2.9	Story	46	5.9	6.5	
	Harrison	14	9.1	6.3	Warren	21	5.3	5.5	
	Johnson	33	3.1	4.8	Washington	8	3.9	2.7	
	Jones	16	7.9	6.3	Woodbury	77	7.5	6.7	
				<b>Total</b>	937	6.1	6.1		
<b>State Total</b>	2,080	7.2	5.8						

<sup>1</sup>Rates per 100,000 population<sup>2</sup>Adjusted to year 2000 population

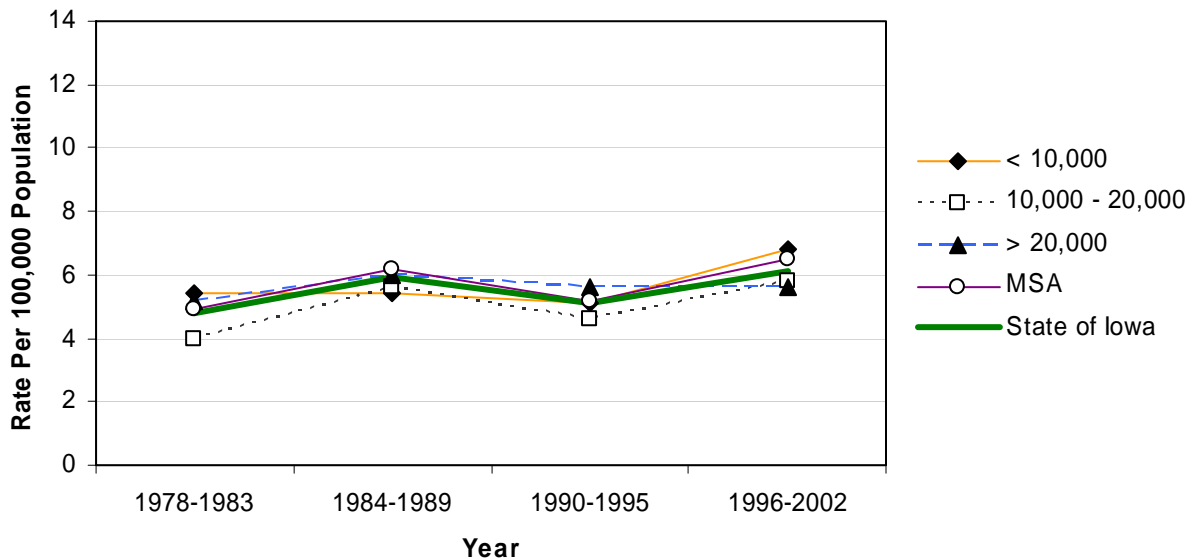
Source: Iowa Department of Public Health via NCHS and NCI's SEER\*Stat Program

## Nephritis, Nephrotic Syndrome, Nephrosis Mortality by County Group 1978-2002

### Crude Rates



### Age-Adjusted Rates



## Chronic Liver Disease and Cirrhosis Mortality 1993-2002

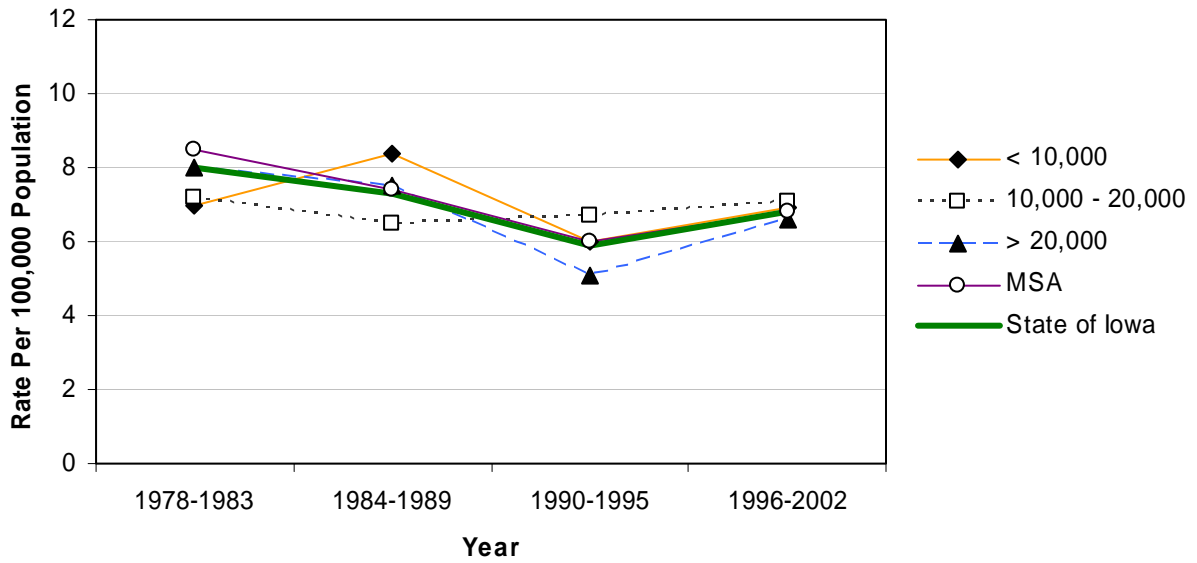
	County	#	Crude <sup>1</sup>	Adjusted <sup>1,2</sup>	County	#	Crude <sup>1</sup>	Adjusted <sup>1,2</sup>	
	Counties with 2004 Population < 10,000	Adair	7	8.5	7.3	Monona	9	9.0	5.2
Adams		8	17.7	15.3	Monroe	9	11.2	8.0	
Audubon		7	10.2	6.8	Osceola	*	*	*	
Clarke		*	*	*	Palo Alto	11	10.8	8.9	
Davis		*	*	*	Pocahontas	7	7.9	6.3	
Decatur		*	*	*	Ringgold	5	9.2	6.7	
Fremont		*	*	*	Taylor	6	8.6	4.9	
Howard		5	5.0	3.9	Van Buren	*	*	*	
Ida		7	8.8	6.6	Wayne	*	*	*	
Lucas		6	6.4	5.3	Worth	9	11.4	9.5	
					<b>Total</b>	113	7.1	5.3	
Counties with 2004 Population 10,000 – 20,000		Allamakee	17	11.7	8.5	Hardin	12	6.4	5.0
		Appanoose	8	5.8	4.9	Humboldt	*	*	*
	Butler	8	5.2	3.6	Iowa	8	5.2	4.4	
	Calhoun	9	8.0	4.3	Jefferson	6	3.7	3.5	
	Cass	10	6.7	5.6	Keokuk	7	6.1	4.7	
	Cedar	14	7.8	6.5	Kossuth	15	8.6	6.0	
	Cherokee	5	3.8	2.6	Louisa	8	6.6	6.1	
	Chickasaw	13	9.9	8.6	Lyon	6	5.1	3.9	
	Clay	6	3.4	3.3	Mitchell	7	6.4	5.3	
	Clayton	15	8.0	5.8	Montgomery	11	9.3	7.1	
	Crawford	9	5.3	4.3	O'Brien	13	8.5	6.3	
	Delaware	15	8.2	7.6	Page	*	*	*	
	Dickinson	12	7.5	6.3	Poweshiek	12	6.3	6.0	
	Emmet	11	9.8	7.0	Sac	9	7.7	5.0	
	Floyd	8	4.7	3.6	Shelby	7	5.3	4.1	
	Franklin	9	8.3	5.4	Tama	18	10.0	9.3	
	Greene	7	6.8	4.6	Union	12	9.7	7.8	
	Hamilton	9	5.5	4.2	Winnebago	11	9.4	8.1	
	Hancock	7	5.8	4.7	Wright	10	6.9	4.9	
				<b>Total</b>	372	6.8	5.3		
Counties with 2004 Population > 20,000	Boone	21	8.1	7.0	Lee	30	7.8	6.7	
	Buchanan	11	5.2	5.2	Mahaska	10	4.5	3.8	
	Buena Vista	12	5.9	5.5	Marion	21	6.6	6.1	
	Carroll	9	4.2	3.1	Marshall	32	8.2	6.9	
	Cerro Gordo	51	10.9	9.1	Muscatine	23	5.5	5.5	
	Clinton	37	7.3	6.5	Plymouth	11	4.5	4.1	
	Des Moines	23	5.4	4.8	Sioux	8	2.5	2.6	
	Fayette	16	7.3	6.2	Wapello	19	5.3	4.4	
	Henry	5	2.5	2.1	Webster	30	7.5	6.7	
	Jackson	15	7.4	6.3	Winneshiek	9	4.2	3.8	
	Jasper	20	5.5	4.6	<b>Total</b>	413	6.3	5.6	
	MSA Counties	Benton	16	6.5	5.9	Linn	105	5.6	5.8
Black Hawk		77	6.0	5.9	Madison	5	3.7	3.1	
Bremer		18	7.7	6.0	Mills	9	6.4	6.1	
Dallas		16	4.2	4.4	Polk	318	8.7	9.4	
Dubuque		50	5.6	5.3	Pottawattamie	51	5.9	5.8	
Grundy		7	5.7	3.8	Scott	87	5.5	5.8	
Guthrie		9	8.0	5.8	Story	22	2.8	3.6	
Harrison		14	9.1	7.6	Warren	19	4.8	5.0	
Johnson		28	2.6	3.8	Washington	14	6.8	5.0	
Jones		11	5.4	4.8	Woodbury	95	9.2	9.4	
					<b>Total</b>	971	6.3	6.6	
<b>State Total</b>	1,869	6.5	6.0						

<sup>1</sup>Rates per 100,000 population<sup>2</sup>Adjusted to year 2000 population

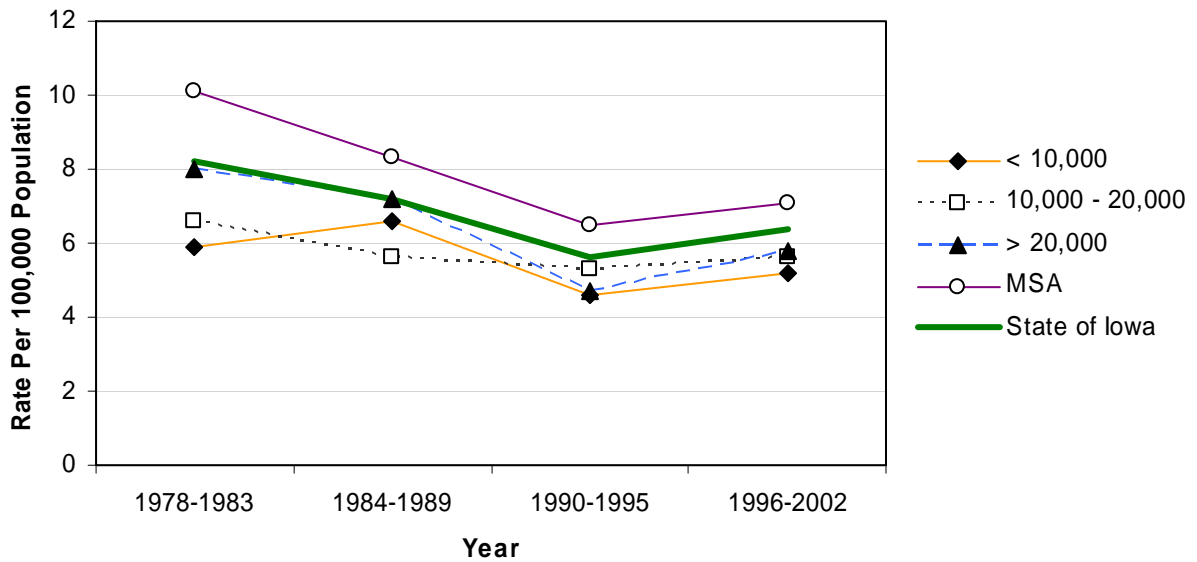
Source: Iowa Department of Public Health via NCHS and NCI's SEER\*Stat Program

## Chronic Liver Disease and Cirrhosis Mortality by County Group 1978-2002

**Crude Rates**



**Age-Adjusted Rates**



## Congenital Anomalies Mortality 1993-2002

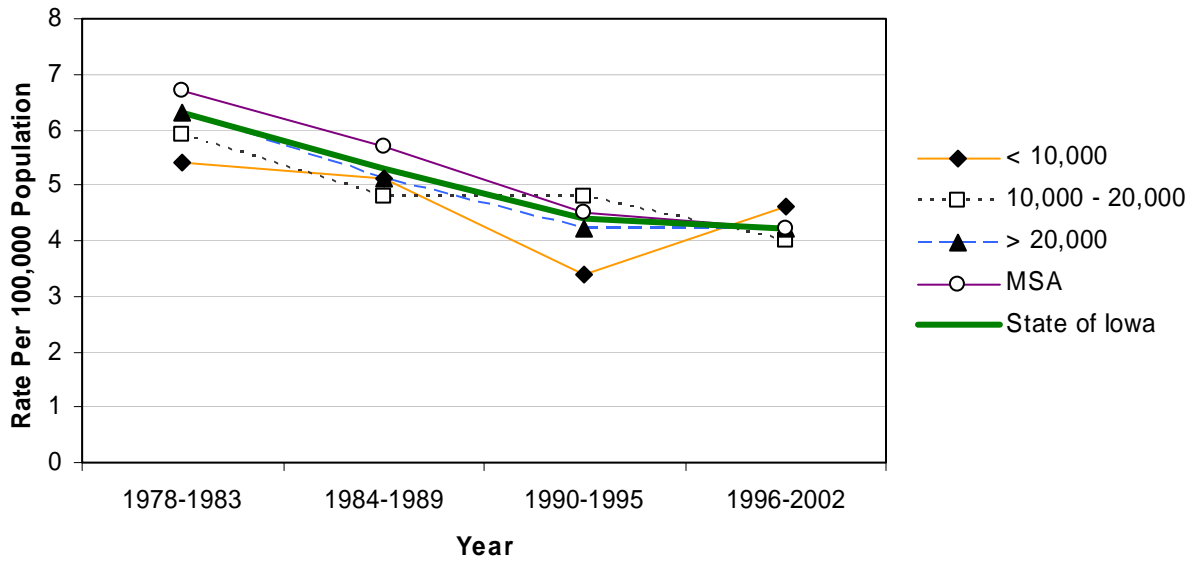
	County	#	Crude <sup>1</sup>	Adjusted <sup>1,2</sup>	County	#	Crude <sup>1</sup>	Adjusted <sup>1,2</sup>	
Counties with 2004 Population < 10,000	Adair	*	*	*	Monona	*	*	*	
	Adams	*	*	*	Monroe	*	*	*	
	Audubon	7	10.2	9.2	Osceola	5	7.1	6.9	
	Clarke	*	*	*	Palo Alto	6	5.9	5.2	
	Davis	*	*	*	Pocahontas	*	*	*	
	Decatur	6	7.1	9.2	Ringgold	*	*	*	
	Fremont	*	*	*	Taylor	*	*	*	
	Howard	5	5.0	4.7	Van Buren	*	*	*	
	Ida	7	8.8	10.9	Wayne	7	10.2	12.1	
	Lucas	*	*	*	Worth	*	*	*	
					<b>Total</b>	<b>74</b>	<b>4.6</b>	<b>4.7</b>	
	Counties with 2004 Population 10,000 – 20,000	Allamakee	9	6.2	6.6	Hardin	9	4.8	5.1
		Appanoose	5	3.6	3.4	Humboldt	*	*	*
Butler		*	*	*	Iowa	7	4.5	4.8	
Calhoun		6	5.3	3.3	Jefferson	7	4.3	4.2	
Cass		9	6.1	4.7	Keokuk	*	*	*	
Cedar		6	3.3	3.9	Kossuth	10	5.7	5.9	
Cherokee		7	5.3	5.3	Louisa	*	*	*	
Chickasaw		*	*	*	Lyon	8	6.8	6.8	
Clay		11	6.3	6.2	Mitchell	7	6.4	5.1	
Clayton		7	3.7	3.4	Montgomery	6	5.1	3.9	
Crawford		7	4.2	4.6	O'Brien	6	3.9	4.4	
Delaware		6	3.3	3.4	Page	8	4.7	5.7	
Dickinson		5	3.1	3.5	Poweshiek	6	3.2	3.8	
Emmet		7	6.2	7.6	Sac	5	4.3	4.8	
Floyd		6	3.5	4.1	Shelby	5	3.8	4.7	
Franklin		*	*	*	Tama	6	3.3	3.3	
Greene		*	*	*	Union	7	5.7	6.8	
Hamilton		5	3.1	3.0	Winnebago	*	*	*	
Hancock		*	*	*	Wright	13	9.0	9.1	
				<b>Total</b>	<b>231</b>	<b>4.2</b>	<b>4.3</b>		
Counties with 2004 Population > 20,000	Boone	12	4.6	4.8	Lee	13	3.4	3.5	
	Buchanan	13	6.2	5.8	Mahaska	*	*	*	
	Buena Vista	6	2.9	3.3	Marion	8	2.5	2.7	
	Carroll	13	6.0	6.0	Marshall	23	5.9	6.1	
	Cerro Gordo	28	6.0	6.3	Muscatine	18	4.3	4.2	
	Clinton	29	5.7	5.8	Plymouth	15	6.1	5.9	
	Des Moines	9	2.1	2.1	Sioux	13	4.1	4.3	
	Fayette	9	4.1	3.4	Wapello	17	4.7	4.5	
	Henry	11	5.5	6.0	Webster	11	2.8	2.7	
	Jackson	9	4.4	4.6	Winneshiek	6	2.8	3.3	
	Jasper	14	3.8	4.0	<b>Total</b>	<b>277-281</b>	<b>4.2-4.3</b>	<b>4.4-4.5</b>	
	MSA Counties	Benton	7	2.8	3.0	Linn	80	4.3	4.3
Black Hawk		47	3.7	4.1	Madison	7	5.1	4.7	
Bremer		9	3.9	3.5	Mills	9	6.4	6.5	
Dallas		15	4.0	3.9	Polk	172	4.7	4.5	
Dubuque		28	3.1	3.2	Pottawattamie	41	4.8	4.7	
Grundy		*	*	*	Scott	48	3.0	3.1	
Guthrie		*	*	*	Story	28	3.6	4.4	
Harrison		7	4.5	4.3	Warren	13	3.3	3.6	
Johnson		33	3.1	3.7	Washington	9	4.4	4.0	
Jones		*	*	*	Woodbury	72	7.0	6.7	
					<b>Total</b>	<b>633</b>	<b>4.1</b>	<b>4.2</b>	
<b>State Total</b>		<b>1,219</b>	<b>4.2</b>	<b>4.3</b>					

<sup>1</sup>Rates per 100,000 population<sup>2</sup>Adjusted to year 2000 population

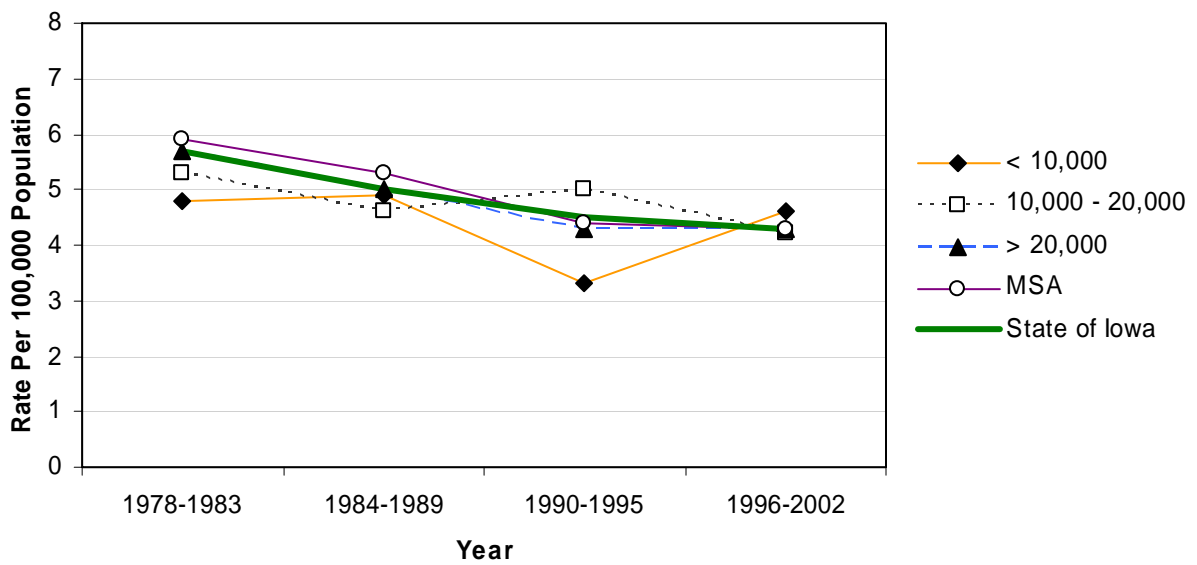
Source: Iowa Department of Public Health via NCHS and NCI's SEER\*Stat Program

# Congenital Anomalies Mortality by County Group 1978-2002

### Crude Rates



### Age-Adjusted Rates



## Conditions Originating in Perinatal Period Mortality 1993-2002

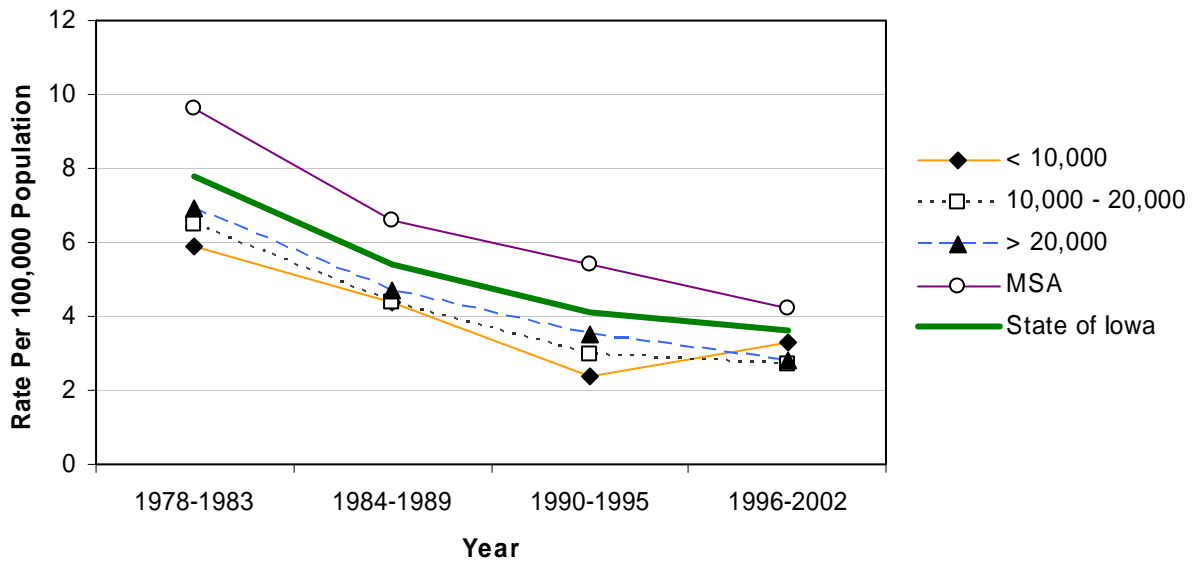
	County	#	Crude <sup>1</sup>	Adjusted <sup>1,2</sup>	County	#	Crude <sup>1</sup>	Adjusted <sup>1,2</sup>	
	Counties with 2004 Population < 10,000	Adair	*	*	*	Monona	*	*	*
Adams		*	*	*	Monroe	*	*	*	
Audubon		*	*	*	Osceola	*	*	*	
Clarke		*	*	*	Palo Alto	7	6.8	9.1	
Davis		*	*	*	Pocahontas	*	*	*	
Decatur		5	5.9	7.8	Ringgold	*	*	*	
Fremont		*	*	*	Taylor	*	*	*	
Howard		*	*	*	Van Buren	*	*	*	
Ida		7	8.8	11.7	Wayne	*	*	*	
Lucas		*	*	*	Worth	*	*	*	
					<b>Total</b>	51	3.2	4.0	
Counties with 2004 Population 10,000 – 20,000		Allamakee	6	4.1	5.4	Hardin	*	*	*
		Appanoose	*	*	*	Humboldt	*	*	*
	Butler	*	*	*	Iowa	*	*	*	
	Calhoun	*	*	*	Jefferson	5	3.1	4.2	
	Cass	*	*	*	Keokuk	*	*	*	
	Cedar	*	*	*	Kossuth	6	3.4	4.7	
	Cherokee	*	*	*	Louisa	*	*	*	
	Chickasaw	*	*	*	Lyon	6	5.1	5.1	
	Clay	5	2.9	3.2	Mitchell	6	5.5	6.3	
	Clayton	*	*	*	Montgomery	5	4.2	5.5	
	Crawford	*	*	*	O'Brien	6	3.9	5.0	
	Delaware	6	3.3	3.7	Page	10	5.9	7.7	
	Dickinson	*	*	*	Poweshiek	*	*	*	
	Emmet	*	*	*	Sac	*	*	*	
	Floyd	*	*	*	Shelby	5	3.8	4.9	
	Franklin	*	*	*	Tama	*	*	*	
	Greene	6	5.8	7.7	Union	5	4.1	5.3	
	Hamilton	6	3.7	4.1	Winnebago	*	*	*	
Hancock	*	*	*	Wright	*	*	*		
				<b>Total</b>	143	2.6	3.2		
Counties with 2004 Population > 20,000	Boone	9	3.5	4.1	Lee	19	5.0	5.9	
	Buchanan	8	3.8	3.6	Mahaska	11	5.0	5.2	
	Buena Vista	*	*	*	Marion	11	3.5	4.0	
	Carroll	9	4.2	4.9	Marshall	14	3.6	3.9	
	Cerro Gordo	8	1.7	2.0	Muscatine	9	2.2	2.1	
	Clinton	13	2.6	2.9	Plymouth	5	2.0	2.3	
	Des Moines	13	3.1	3.4	Sioux	11	3.5	3.6	
	Fayette	6	2.7	3.4	Wapello	6	1.7	1.9	
	Henry	6	3.0	3.6	Webster	9	2.3	2.5	
	Jackson	9	4.4	5.4	Winneshiek	*	*	*	
	Jasper	14	3.8	4.3	<b>Total</b>	196	3.0	3.4	
	MSA Counties	Benton	10	4.1	4.7	Linn	80	4.3	4.2
Black Hawk		49	3.8	4.4	Madison	6	4.4	4.8	
Bremer		7	3.0	3.9	Mills	6	4.3	5.0	
Dallas		12	3.2	3.1	Polk	191	5.2	4.8	
Dubuque		25	2.8	3.0	Pottawattamie	39	4.5	4.6	
Grundy		5	4.1	5.8	Scott	83	5.3	5.2	
Guthrie		*	*	*	Story	22	2.8	3.4	
Harrison		5	3.2	4.0	Warren	27	6.8	7.4	
Johnson		44	4.1	4.6	Washington	11	5.4	5.4	
Jones		11	5.4	6.8	Woodbury	53	5.1	4.9	
					<b>Total</b>	686-690	4.4-4.5	4.6-4.7	
<b>State Total</b>	1,079	3.7	4.1						

<sup>1</sup>Rates per 100,000 population<sup>2</sup>Adjusted to year 2000 population

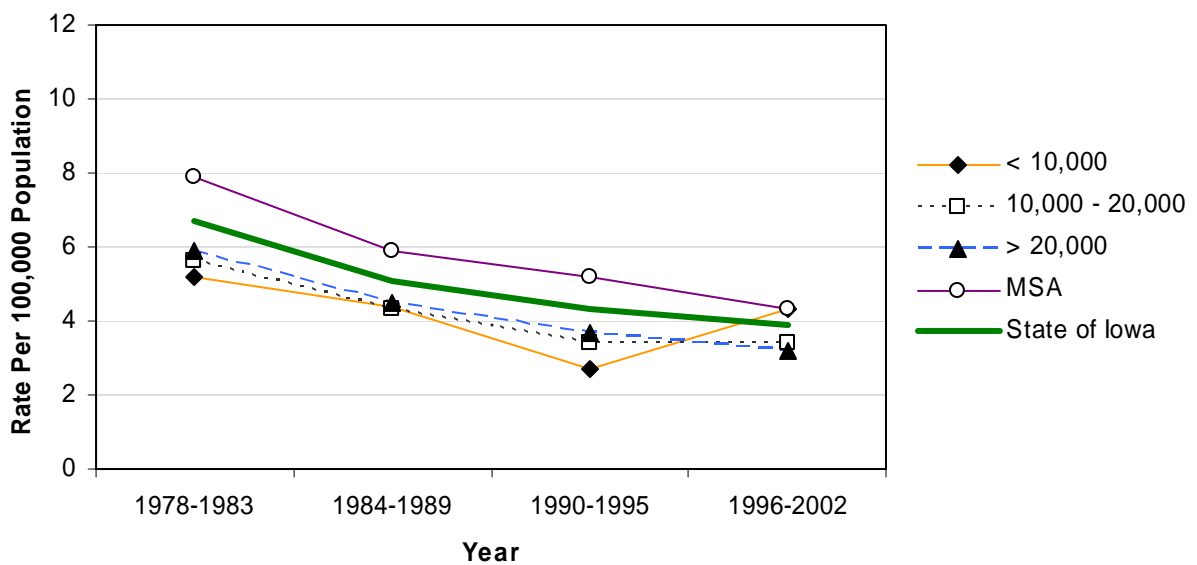
Source: Iowa Department of Public Health via NCHS and NCI's SEER\*Stat Program

## Conditions Originating in Perinatal Period Mortality by County Group 1978-2002

### Crude Rates



### Age-Adjusted Rates



## Alzheimer's Disease Mortality 1993-2002

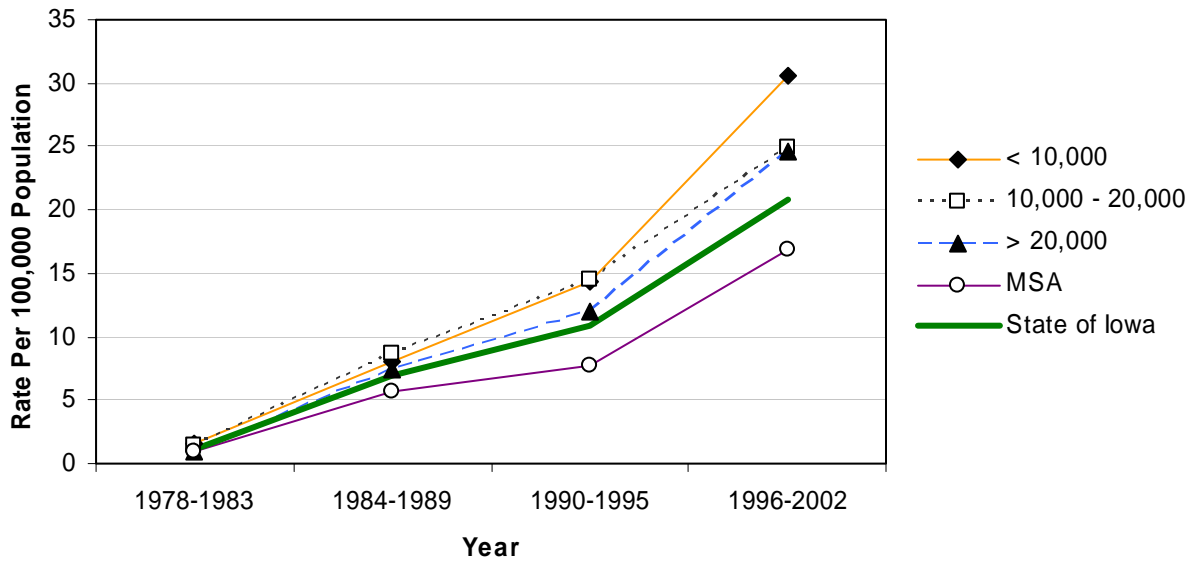
	County	#	Crude <sup>1</sup>	Adjusted <sup>1,2</sup>	County	#	Crude <sup>1</sup>	Adjusted <sup>1,2</sup>	
	Counties with 2004 Population < 10,000	Adair	7	8.5	3.7	Monona	42	41.9	17.9
Adams		7	15.5	8.4	Monroe	20	24.8	13.6	
Audubon		31	45.1	19.9	Osceola	7	9.9	5.6	
Clarke		37	42.0	24.6	Palo Alto	24	23.5	10.8	
Davis		*	*	*	Pocahontas	24	27.1	12.8	
Decatur		23	27.0	17.1	Ringgold	32	59.1	26.1	
Fremont		31	38.5	21.5	Taylor	17	24.3	10.6	
Howard		29	29.2	14.2	Van Buren	14	18.1	10.3	
Ida		22	27.5	13.9	Wayne	14	20.5	8.7	
Lucas		9	9.6	5.4	Worth	23	29.0	14.4	
					<b>Total</b>	<b>413-417</b>	<b>25.8-26.0</b>	<b>13.0-13.2</b>	
Counties with 2004 Population 10,000 – 20,000		Allamakee	62	42.8	24.7	Hardin	52	27.6	13.1
		Appanoose	7	5.1	2.6	Humboldt	23	22.1	11.4
	Butler	43	27.9	15.2	Iowa	21	13.6	7.8	
	Calhoun	54	47.9	21.7	Jefferson	45	27.5	20.6	
	Cass	24	16.2	8.4	Keokuk	15	13.1	6.5	
	Cedar	11	6.1	3.7	Kossuth	43	24.7	13.3	
	Cherokee	18	13.5	7.8	Louisa	13	10.8	8.5	
	Chickasaw	21	15.9	10.2	Lyon	16	13.6	7.8	
	Clay	38	21.7	13.7	Mitchell	12	11.0	4.7	
	Clayton	42	22.4	13.1	Montgomery	35	29.6	13.2	
	Crawford	41	24.3	14.7	O'Brien	28	18.3	8.7	
	Delaware	35	19.1	15.0	Page	42	24.8	13.1	
	Dickinson	20	12.5	7.3	Poweshiek	48	25.4	14.5	
	Emmet	21	18.7	9.7	Sac	21	17.9	8.3	
	Floyd	45	26.6	15.2	Shelby	33	25.0	13.1	
	Franklin	37	34.0	18.7	Tama	61	34.0	18.9	
	Greene	20	19.4	8.9	Union	27	21.9	12.7	
Hamilton	28	17.1	11.0	Winnebago	22	18.8	9.9		
Hancock	21	17.4	10.5	Wright	61	42.4	20.6		
				<b>Total</b>	<b>1,206</b>	<b>22.0</b>	<b>12.2</b>		
Counties with 2004 Population > 20,000	Boone	109	42.2	25.9	Lee	93	24.2	16.8	
	Buchanan	23	10.9	8.8	Mahaska	42	19.0	12.9	
	Buena Vista	31	15.2	9.0	Marion	53	16.8	11.3	
	Carroll	55	25.6	14.7	Marshall	213	54.6	38.6	
	Cerro Gordo	107	23.0	15.0	Muscatine	66	15.9	14.3	
	Clinton	73	14.4	10.8	Plymouth	49	19.9	14.1	
	Des Moines	57	13.4	9.3	Sioux	52	16.5	12.5	
	Fayette	69	31.3	17.9	Wapello	70	19.4	12.5	
	Henry	25	12.4	8.7	Webster	64	16.1	10.1	
	Jackson	23	11.4	7.7	Winneshiek	32	15.1	10.6	
	Jasper	68	18.7	14.0	<b>Total</b>	<b>1,374</b>	<b>21.0</b>	<b>14.6</b>	
MSA Counties	Benton	40	16.2	11.6	Linn	223	12.0	11.8	
	Black Hawk	182	14.3	12.1	Madison	45	33.0	22.2	
	Bremer	75	32.2	20.4	Mills	20	14.2	12.9	
	Dallas	53	14.0	13.1	Polk	503	13.8	15.1	
	Dubuque	136	15.3	12.1	Pottawattamie	151	17.6	17.2	
	Grundy	28	22.8	12.3	Scott	233	14.8	16.1	
	Guthrie	19	16.8	9.5	Story	93	11.9	12.9	
	Harrison	20	13.0	7.9	Warren	86	21.7	21.5	
	Johnson	90	8.4	13.4	Washington	33	16.1	9.3	
	Jones	18	8.9	6.6	Woodbury	179	17.3	15.0	
					<b>Total</b>	<b>2,227</b>	<b>14.5</b>	<b>14.0</b>	
<b>State Total</b>	<b>5,220-4</b>	<b>17.9-18.0</b>	<b>13.6-13.7</b>						

<sup>1</sup>Rates per 100,000 population<sup>2</sup>Adjusted to year 2000 population

Source: Iowa Department of Public Health via NCHS and NCI's SEER\*Stat Program

# Alzheimer's Disease Mortality by County Group 1978-2002

### Crude Rates



### Age-Adjusted Rates

