

Demographics

Many of the health indicators in the 2007 Iowa Health Fact Book are presented with rates calculated using the population of the county and state. These rates are also stratified into population subgroups based on a 10-year average of each county's population. This not only contrasts the rural and urban aspects of the state but also includes trends in age and ethnic distribution of the population. The Year 2000 U.S. standard population age distribution is used for calculating age-adjusted rates. Population estimates have been obtained from the U.S. Census and from the State Health Registry of Iowa via the National Cancer Institute's SEER*Stat software program. Estimates are used for individual years and for year groupings where appropriate.

KEY FEATURES IN IOWA DEMOGRAPHICS...

- ✓ Increasing urbanization
- ✓ Females represent 50.8% of population
- ✓ Median age 38.6 years
- ✓ Over 65 represents 14% of population

The population in Iowa is becoming increasingly urbanized. Using the 2000 Census, twenty counties were defined as Metropolitan Statistical Areas (MSA) doubling the previous number of ten MSA defined counties. The Metropolitan Statistical Areas are Ames (Story County), Cedar Rapids (Benton, Jones, Linn Counties), Des Moines (Dallas, Guthrie, Madison, Polk, Warren Counties), Dubuque (Dubuque County), Iowa City (Johnson, Washington Counties), Omaha-Council Bluffs (Harrison, Mills, Pottawattamie Counties), Sioux City (Woodbury County), Waterloo-Cedar Falls (Black Hawk, Bremer, Grundy Counties). Over 55% of the 2006 estimated Iowa population of 2,982,085 lived in MSA counties. The population of Iowa is expected to exceed 3 million by 2010.

CHARACTERISTICS OF RACE / ETHNICITY

White	93.5%
Black or African American	2.2%
Asian	1.5%
Some other race or races	2.8%
Hispanic or Latino (of any race)	3.7%

The distribution of the population by age is different among the county groupings. The larger counties have a greater percentage of their population as young adults (15-44 years) compared to the

smaller counties. Conversely, the smaller counties have a larger percentage of persons 65 years of age or older. These differences in age distributions are standardized through age-adjustment so risk factors other than age can be compared. As shown, the population of the state has become older since 1970. The percent of Iowans age 65 and older increased steadily through the early 1990's, but has slightly decreased since then.

State Population Distributions

Estimated Annual Population Distribution 1997-2006

County	1997	1998	1999	2000	2001	2002	2003	
Counties with Average Population < 10,000	Adair	8,310	8,305	8,298	8,243	8,095	8,003	7,961
	Adams	4,503	4,493	4,498	4,482	4,415	4,386	4,371
	Audubon	6,916	6,893	6,896	6,830	6,663	6,587	6,487
	Clarke	8,701	8,841	8,908	9,133	9,164	9,158	9,216
	Davis	8,496	8,484	8,518	8,541	8,633	8,624	8,575
	Decatur	8,416	8,538	8,646	8,689	8,698	8,630	8,581
	Fremont	7,989	7,993	7,997	8,010	7,916	7,838	7,819
	Howard	9,966	9,999	9,950	9,932	9,895	9,854	9,792
	Ida	8,024	7,928	7,914	7,837	7,690	7,614	7,508
	Lucas	9,395	9,422	9,461	9,422	9,445	9,452	9,494
	Monona	10,121	10,047	10,056	10,020	9,861	9,757	9,795
	Monroe	8,132	8,080	8,061	8,016	7,925	7,800	7,850
	Osceola	7,167	7,087	7,049	7,003	6,945	6,839	6,802
	Palo Alto	10,254	10,245	10,137	10,147	10,042	9,886	9,740
	Pocahontas	8,864	8,859	8,808	8,662	8,513	8,387	8,232
	Ringgold	5,447	5,441	5,449	5,469	5,423	5,332	5,346
	Taylor	7,016	7,029	6,905	6,958	6,869	6,827	6,750
	Van Buren	7,736	7,774	7,784	7,809	7,743	7,801	7,732
	Wayne	6,910	6,821	6,738	6,730	6,660	6,652	6,630
	Worth	7,929	7,926	7,890	7,909	7,832	7,793	7,726
Total	160,292	160,205	159,963	159,842	158,427	157,220	156,407	
Counties with Average Population 10,000 – 20,000	Allamakee	14,487	14,611	14,651	14,675	14,413	14,452	14,600
	Appanoose	13,677	13,761	13,709	13,721	13,622	13,451	13,616
	Butler	15,501	15,406	15,286	15,305	15,156	15,015	15,006
	Calhoun	11,377	11,296	11,190	11,115	11,001	10,812	10,652
	Cass	14,886	14,794	14,649	14,684	14,573	14,310	14,367
	Cedar	18,102	18,057	18,178	18,187	18,120	18,171	18,239
	Cherokee	13,381	13,204	13,096	13,035	12,925	12,676	12,529
	Chickasaw	13,272	13,237	13,209	13,095	13,087	12,858	12,687
	Clay	17,662	17,550	17,339	17,372	17,283	17,075	16,976
	Clayton	18,952	18,900	18,825	18,678	18,532	18,379	18,340
	Crawford	16,864	16,901	16,911	16,942	16,961	16,993	16,904
	Delaware	18,380	18,487	18,444	18,404	18,296	18,293	18,188
	Dickinson	16,076	16,236	16,333	16,424	16,479	16,413	16,414
	Emmet	11,303	11,247	11,103	11,027	10,890	10,825	10,729
	Floyd	17,059	16,987	16,959	16,900	16,642	16,616	16,572
	Franklin	10,921	10,875	10,780	10,704	10,654	10,684	10,672
	Greene	10,402	10,442	10,394	10,366	10,172	10,178	10,104
	Hamilton	16,371	16,405	16,387	16,438	16,269	16,305	16,304
	Hancock	12,043	12,085	12,091	12,100	11,950	11,832	11,861
	Hardin	18,981	18,912	18,784	18,812	18,625	18,429	18,265
	Humboldt	10,473	10,462	10,414	10,381	10,325	10,136	10,114
	Iowa	15,423	15,463	15,570	15,671	15,831	15,818	15,946
	Jefferson	16,628	16,553	16,282	16,181	16,110	15,963	16,000
	Keokuk	11,444	11,406	11,317	11,400	11,380	11,408	11,329
	Kossuth	17,552	17,321	17,258	17,163	16,814	16,593	16,433
	Louisa	12,050	12,114	12,174	12,183	12,214	12,219	12,212
	Lyon	11,811	11,863	11,812	11,763	11,668	11,694	11,709
	Mitchell	10,941	10,863	10,895	10,874	10,747	10,861	10,857
	Montgomery	11,889	11,890	11,767	11,771	11,536	11,363	11,306
	O'Brien	15,498	15,457	15,200	15,102	14,916	14,754	14,717

State Population Distributions (continued)

Estimated Annual Population Distribution 1997-2006								
	County	2004	2005	2006	Percent Change ¹	Ten Year Average ²	Male ³	Female ³
Counties with Average Population < 10,000	Adair	7,875	7,795	7,714	-6.4%	8,060	3,992	4,169
	Adams	4,307	4,223	4,192	-6.5%	4,387	2,189	2,254
	Audubon	6,465	6,363	6,278	-8.1%	6,638	3,241	3,501
	Clarke	9,239	9,118	9,156	0.3%	9,063	4,414	4,599
	Davis	8,665	8,597	8,602	0.7%	8,574	4,233	4,321
	Decatur	8,613	8,645	8,656	-0.4%	8,611	4,194	4,393
	Fremont	7,736	7,698	7,737	-3.4%	7,873	3,874	4,058
	Howard	9,784	9,721	9,677	-2.6%	9,857	4,888	5,020
	Ida	7,417	7,342	7,180	-8.4%	7,645	3,780	3,997
	Lucas	9,665	9,627	9,543	1.3%	9,493	4,579	4,869
	Monona	9,652	9,504	9,343	-6.8%	9,816	4,810	5,121
	Monroe	7,826	7,798	7,725	-3.6%	7,921	3,896	4,085
	Osceola	6,760	6,648	6,629	-5.3%	6,893	3,409	3,572
	Palo Alto	9,758	9,669	9,549	-5.9%	9,943	4,912	5,137
	Pocahontas	8,074	7,931	7,794	-10.0%	8,412	4,210	4,383
	Ringgold	5,333	5,255	5,289	-3.3%	5,378	2,619	2,791
	Taylor	6,660	6,553	6,540	-6.0%	6,811	3,334	3,569
	Van Buren	7,739	7,732	7,836	0.3%	7,769	3,859	3,898
	Wayne	6,591	6,548	6,542	-2.8%	6,682	3,215	3,528
	Worth	7,728	7,755	7,698	-2.7%	7,819	3,890	3,972
Total		155,887	154,522	153,680	-3.9%	157,645	77,538	81,237
Counties with Average Population 10,000 – 20,000	Allamakee	14,699	14,782	14,796	0.8%	14,617	7,287	7,278
	Appanoose	13,617	13,584	13,422	-2.2%	13,618	6,545	7,112
	Butler	15,027	15,045	15,073	-1.5%	15,182	7,505	7,745
	Calhoun	10,540	10,482	10,437	-6.1%	10,890	5,502	5,541
	Cass	14,255	14,161	14,124	-3.8%	14,480	7,093	7,525
	Cedar	18,233	18,240	18,326	0.8%	18,185	8,952	9,186
	Cherokee	12,411	12,245	12,094	-7.2%	12,760	6,380	6,587
	Chickasaw	12,607	12,472	12,412	-5.2%	12,894	6,513	6,522
	Clay	16,931	16,838	16,801	-3.3%	17,183	8,371	8,945
	Clayton	18,332	18,224	18,251	-2.3%	18,541	9,230	9,422
	Crawford	16,879	16,888	16,948	0.0%	16,919	8,452	8,452
	Delaware	18,077	17,938	17,848	-3.0%	18,236	9,074	9,243
	Dickinson	16,583	16,746	16,924	3.0%	16,463	7,955	8,357
	Emmet	10,602	10,536	10,479	-5.0%	10,874	5,365	5,644
	Floyd	16,517	16,453	16,441	-2.7%	16,715	8,112	8,695
	Franklin	10,730	10,759	10,708	0.0%	10,749	5,299	5,482
	Greene	10,070	9,962	9,809	-5.4%	10,190	4,999	5,262
	Hamilton	16,226	16,223	16,087	-2.1%	16,302	8,079	8,261
	Hancock	11,794	11,758	11,680	-3.5%	11,919	5,896	6,096
	Hardin	18,109	17,925	17,791	-5.4%	18,463	9,146	9,529
	Humboldt	10,083	10,001	9,975	-3.9%	10,236	5,045	5,264
	Iowa	15,958	16,054	16,140	3.0%	15,787	7,643	8,035
	Jefferson	16,038	16,000	15,945	-1.5%	16,170	7,954	8,290
	Keokuk	11,225	11,121	11,081	-2.8%	11,311	5,526	5,858
	Kossuth	16,323	16,181	16,011	-6.7%	16,765	8,330	8,682
	Louisa	12,029	11,813	11,858	-2.7%	12,087	6,040	6,104
	Lyon	11,725	11,690	11,636	-1.1%	11,737	5,827	5,936
	Mitchell	10,933	10,872	10,856	-0.2%	10,870	5,322	5,561
Montgomery	11,314	11,364	11,365	-3.4%	11,557	5,517	6,124	
O'Brien	14,483	14,410	14,409	-4.6%	14,895	7,351	7,697	

¹Percent change from 2000 to 2006

²1997-2006 Average

³1996-2004 Average

Source: Population Division, U.S. Census Bureau and SEER*Stat

State Population Distributions (continued)

Estimated Annual Population Distribution 1997-2006

		County	1997	1998	1999	2000	2001	2002	2003
Counties with Average Population 10,000 – 20,000		Page	17,374	17,330	17,112	16,976	16,889	16,493	16,326
		Poweshiek	18,989	18,814	18,797	18,815	18,898	18,854	18,946
		Sac	11,882	11,852	11,686	11,529	11,365	11,056	10,892
		Shelby	13,353	13,256	13,179	13,173	13,020	12,893	12,821
		Tama	17,950	18,070	18,121	18,103	18,020	17,914	17,850
		Union	12,345	12,349	12,397	12,309	12,239	12,148	11,933
		Winnebago	11,876	11,741	11,660	11,723	11,576	11,427	11,424
		Wright	14,560	14,506	14,379	14,334	14,150	13,959	13,789
		Total	551,735	550,703	548,338	547,435	543,348	539,320	537,629
Counties with Average Population > 20,000		Boone	26,023	25,930	26,164	26,224	26,247	26,093	26,240
		Buchanan	21,084	21,088	21,158	21,093	20,957	20,855	20,910
		Buena Vista	20,427	20,301	20,508	20,411	20,240	20,300	20,260
		Carroll	21,705	21,703	21,631	21,421	21,193	21,162	21,062
		Cerro Gordo	47,091	46,950	46,637	46,447	45,733	45,330	45,235
		Clinton	50,635	50,553	50,346	50,149	49,950	49,829	49,782
		Des Moines	42,620	42,621	42,515	42,351	41,960	41,431	41,440
		Fayette	22,261	22,179	22,011	22,008	21,723	21,544	21,458
		Henry	20,033	20,285	20,351	20,336	20,350	20,093	20,262
		Jackson	20,155	20,225	20,217	20,296	20,337	20,240	20,212
		Jasper	36,087	36,898	37,096	37,213	37,451	37,591	37,690
		Lee	38,720	38,544	38,281	38,052	37,497	36,982	36,701
		Mahaska	22,126	22,266	22,400	22,335	22,380	22,350	22,051
		Marion	31,317	31,601	31,879	32,052	32,581	32,561	32,522
		Marshall	39,242	39,238	39,313	39,311	39,345	39,246	39,315
		Muscatine	41,280	41,417	41,587	41,722	41,939	42,075	42,089
		Plymouth	24,691	24,578	24,774	24,849	24,859	24,661	24,769
		Sioux	31,473	31,649	31,669	31,589	31,860	31,974	31,997
		Wapello	35,980	35,948	36,042	36,051	36,027	35,921	35,844
		Webster	39,268	39,652	40,255	40,235	40,116	39,812	39,572
	Winneshiek	21,064	21,251	21,289	21,310	21,345	21,306	21,159	
	Total	653,282	654,877	656,123	655,455	654,090	651,356	650,570	
MSA Counties		Benton	24,453	24,823	25,214	25,308	25,729	26,159	26,368
		Black Hawk	127,275	127,743	127,786	128,012	127,481	126,456	125,753
		Bremer	23,292	23,322	23,398	23,325	23,429	23,271	23,374
		Dallas	36,862	38,152	39,691	40,750	42,764	44,458	46,519
		Dubuque	88,996	88,775	88,934	89,143	89,216	89,571	90,635
		Grundy	12,335	12,277	12,332	12,369	12,311	12,348	12,314
		Guthrie	11,321	11,321	11,403	11,353	11,292	11,313	11,466
		Harrison	15,498	15,569	15,510	15,666	15,697	15,564	15,706
		Johnson	106,538	107,819	109,814	111,006	112,926	113,936	114,975
		Jones	20,587	20,369	20,220	20,221	20,191	20,268	20,374
		Linn	185,450	187,210	189,931	191,701	194,011	195,416	196,224
		Madison	13,585	13,702	13,898	14,019	14,192	14,417	14,575
		Mills	14,145	14,265	14,478	14,547	14,586	14,723	14,851
		Polk	360,985	365,086	370,592	374,601	380,625	385,479	389,862
		Pottawattamie	85,677	86,609	87,153	87,704	87,765	88,116	88,366
		Scott	157,228	157,754	158,765	158,668	158,778	159,111	159,349
		Story	77,833	78,221	79,372	79,981	79,602	80,784	80,331
		Warren	39,510	39,911	40,340	40,671	41,104	41,426	42,093
		Washington	20,512	20,506	20,578	20,670	21,052	21,136	21,197
		Woodbury	103,728	103,653	103,801	103,877	103,535	103,447	103,132
	Total	1,525,810	1,537,087	1,553,210	1,563,592	1,576,286	1,587,399	1,597,464	

State Population Distributions (continued)

Estimated Annual Population Distribution 1997-2006

	County	2004	2005	2006	Percent Change ¹	Ten Year Average ²	Male ³	Female ³
Counties with Average Population 10,000 – 20,000	Page	16,229	16,291	16,263	-4.2%	16,728	8,588	8,309
	Poweshiek	18,995	18,923	19,007	1.0%	18,904	9,102	9,804
	Sac	10,815	10,651	10,682	-7.3%	11,241	5,604	5,838
	Shelby	12,753	12,566	12,489	-5.2%	12,950	6,406	6,671
	Tama	17,962	17,937	17,890	-1.2%	17,982	8,822	9,155
	Union	11,974	11,978	12,093	-1.8%	12,177	5,855	6,383
	Winnebago	11,376	11,360	11,216	-4.3%	11,538	5,670	5,963
	Wright	13,677	13,601	13,419	-6.4%	14,037	6,965	7,260
	Total	536,131	534,074	532,786	-2.7%	542,150	267,322	277,818
Counties with Average Population > 20,000	Boone	26,397	26,495	26,584	1.4%	26,240	12,762	13,366
	Buchanan	21,037	21,021	21,045	-0.2%	21,025	10,439	10,588
	Buena Vista	20,154	20,103	20,091	-1.6%	20,280	10,175	10,163
	Carroll	21,015	21,015	20,963	-2.1%	21,287	10,405	10,977
	Cerro Gordo	44,794	44,594	44,384	-4.4%	45,720	22,159	23,982
	Clinton	49,787	49,744	49,782	-0.7%	50,056	24,369	25,824
	Des Moines	41,033	40,975	40,885	-3.5%	41,783	20,293	21,745
	Fayette	21,233	21,195	20,996	-4.6%	21,661	10,779	11,076
	Henry	20,228	20,379	20,405	0.3%	20,272	10,258	9,946
	Jackson	20,217	20,243	20,290	0.0%	20,243	9,973	10,268
	Jasper	37,644	37,538	37,409	0.5%	37,262	18,610	18,445
	Lee	36,697	36,519	36,338	-4.5%	37,433	18,692	19,112
	Mahaska	22,112	22,309	22,298	-0.2%	22,263	11,050	11,176
	Marion	32,610	32,738	32,987	2.9%	32,285	15,909	16,157
	Marshall	39,571	39,572	39,555	0.6%	39,371	19,427	19,845
	Muscatine	42,334	42,567	42,883	2.8%	41,989	20,682	21,075
	Plymouth	24,931	24,880	24,906	0.2%	24,790	12,314	12,455
	Sioux	32,203	32,332	32,525	3.0%	31,927	15,567	16,146
	Wapello	35,768	35,976	36,010	-0.1%	35,957	17,482	18,477
	Webster	39,186	38,963	38,960	-3.2%	39,602	19,774	19,952
Winneshiek	21,187	21,224	21,263	-0.2%	21,240	10,460	10,768	
Total	650,138	650,382	650,559	-0.7%	652,683	321,579	331,543	
MSA Counties	Benton	26,780	26,944	26,962	6.5%	25,874	12,681	12,768
	Black Hawk	125,701	125,960	126,106	-1.5%	126,827	60,961	66,101
	Bremer	23,492	23,590	23,837	2.2%	23,433	11,296	12,064
	Dallas	49,526	51,879	54,525	33.8%	44,513	20,513	21,069
	Dubuque	91,223	91,603	92,384	3.6%	90,048	43,537	45,934
	Grundy	12,368	12,307	12,320	-0.4%	12,328	6,023	6,309
	Guthrie	11,524	11,419	11,344	-0.1%	11,376	5,598	5,767
	Harrison	15,770	15,759	15,745	0.5%	15,648	7,663	7,945
	Johnson	116,401	117,194	118,038	6.3%	112,865	55,078	55,877
	Jones	20,527	20,495	20,505	1.4%	20,376	10,701	9,669
	Linn	197,555	199,553	201,853	5.3%	193,890	93,585	97,507
	Madison	14,904	15,148	15,547	10.9%	14,399	6,960	7,134
	Mills	14,973	15,255	15,595	7.2%	14,742	7,271	7,224
	Polk	394,211	401,755	408,888	9.2%	383,208	182,029	193,441
	Pottawattamie	89,261	89,673	90,218	2.9%	88,054	42,615	44,715
	Scott	160,105	161,170	162,621	2.5%	159,355	77,548	80,959
	Story	80,296	79,787	80,145	0.2%	79,635	40,655	38,586
	Warren	42,408	43,165	43,926	8.0%	41,455	19,854	20,902
	Washington	21,307	21,372	21,529	4.2%	20,986	10,060	10,763
	Woodbury	103,191	102,518	102,972	-0.9%	103,385	50,691	52,903
Total	1,611,523	1,626,546	1,645,060	5.2%	1,582,398	765,319	797,637	

¹Percent change from 2000 to 2006

²1997-2006 Average

³1996-2004 Average

Source: Population Division, U.S. Census Bureau and SEER*Stat

Average Annual Population Distribution by Age: 1996-2004

	County	% < 1	% 1-4	% 5-14	% 15-24	% 25-44	% 45-64	% 65-84	% 85 +
Counties with Average Population < 10,000	Adair	1.0%	4.2%	13.1%	11.7%	24.3%	23.5%	18.0%	4.2%
	Adams	0.9%	4.3%	13.2%	10.9%	24.4%	24.6%	18.2%	3.5%
	Audubon	1.0%	4.4%	14.5%	10.5%	22.6%	23.7%	19.3%	4.0%
	Clarke	1.3%	4.9%	14.3%	12.4%	26.4%	23.1%	14.4%	3.1%
	Davis	1.2%	5.6%	14.6%	12.7%	25.4%	23.1%	14.3%	3.1%
	Decatur	1.0%	4.3%	12.3%	21.1%	22.0%	21.3%	14.9%	3.1%
	Fremont	1.0%	4.4%	14.2%	11.0%	24.4%	24.9%	17.0%	3.1%
	Howard	1.2%	4.6%	14.7%	11.8%	25.3%	22.0%	16.8%	3.4%
	Ida	1.0%	4.4%	14.1%	11.6%	24.0%	23.2%	18.5%	3.3%
	Lucas	1.0%	4.7%	14.2%	12.1%	25.1%	23.6%	15.8%	3.5%
	Monona	1.0%	4.1%	13.0%	10.7%	23.5%	23.8%	19.4%	4.5%
	Monroe	1.2%	4.8%	14.1%	11.9%	25.3%	23.4%	16.2%	3.0%
	Osceola	1.1%	4.6%	14.6%	12.3%	25.7%	22.7%	15.9%	3.1%
	Palo Alto	1.0%	4.4%	13.1%	14.7%	23.0%	22.5%	17.6%	3.8%
	Pocahontas	1.0%	3.9%	14.3%	10.9%	22.8%	25.1%	18.4%	3.6%
	Ringgold	1.1%	4.6%	12.6%	12.1%	21.9%	24.0%	19.8%	4.0%
	Taylor	1.0%	4.4%	13.4%	12.1%	23.4%	23.4%	18.4%	3.9%
	Van Buren	1.0%	4.5%	13.9%	11.9%	24.5%	24.9%	16.1%	3.3%
	Wayne	1.0%	4.1%	13.3%	11.3%	23.0%	23.6%	19.5%	4.2%
	Worth	1.1%	4.3%	13.4%	11.3%	26.1%	24.3%	15.8%	3.6%
Total		1.1%	4.5%	13.8%	12.3%	24.2%	23.5%	17.1%	3.6%
Counties with Average Population 10,000 – 20,000	Allamakee	1.1%	4.6%	14.2%	11.9%	25.8%	23.9%	15.5%	3.0%
	Appanoose	1.2%	4.3%	13.2%	12.5%	25.2%	23.7%	16.5%	3.4%
	Butler	1.0%	4.3%	13.6%	11.5%	24.9%	24.7%	16.9%	3.2%
	Calhoun	0.9%	4.0%	12.6%	11.3%	24.8%	24.2%	18.2%	4.0%
	Cass	1.1%	4.3%	13.2%	11.5%	24.8%	24.2%	17.3%	3.6%
	Cedar	1.1%	4.7%	14.0%	12.1%	27.6%	24.3%	13.4%	2.9%
	Cherokee	1.0%	4.3%	13.6%	12.0%	23.9%	24.8%	17.4%	3.0%
	Chickasaw	1.1%	4.6%	14.6%	12.4%	25.5%	23.9%	15.1%	2.8%
	Clay	1.2%	4.7%	13.7%	12.4%	27.0%	23.1%	15.1%	2.9%
	Clayton	1.1%	4.5%	14.2%	11.7%	25.8%	24.2%	15.5%	2.9%
	Crawford	1.2%	5.0%	14.2%	13.6%	25.6%	23.2%	14.6%	2.7%
	Delaware	1.2%	5.0%	16.1%	13.1%	27.2%	22.2%	13.0%	2.2%
	Dickinson	1.0%	4.2%	12.0%	10.9%	24.3%	26.8%	17.8%	3.0%
	Emmet	1.2%	4.2%	12.9%	15.5%	24.0%	23.0%	15.9%	3.4%
	Floyd	1.1%	4.8%	13.9%	11.8%	24.6%	24.4%	16.1%	3.3%
	Franklin	1.1%	4.4%	13.3%	12.1%	24.4%	24.5%	17.1%	3.0%
	Greene	1.1%	4.5%	14.1%	11.6%	24.0%	23.1%	17.8%	4.0%
	Hamilton	1.2%	4.9%	13.9%	11.7%	27.1%	23.0%	15.3%	2.8%
	Hancock	1.1%	4.7%	14.6%	12.1%	25.2%	24.1%	15.2%	3.0%
	Hardin	1.1%	4.5%	12.8%	14.1%	23.6%	23.1%	17.1%	3.7%
	Humboldt	1.1%	4.2%	13.5%	12.3%	24.4%	23.6%	17.6%	3.3%
	Iowa	1.1%	4.8%	15.1%	11.2%	27.7%	22.9%	14.2%	3.1%
	Jefferson	1.0%	4.2%	13.3%	13.0%	25.1%	29.6%	11.5%	2.3%
	Keokuk	1.1%	4.7%	14.4%	12.0%	25.5%	22.5%	16.3%	3.5%
	Kossuth	1.0%	4.3%	14.2%	11.8%	24.0%	24.5%	17.0%	3.2%
	Louisa	1.3%	5.5%	15.3%	12.6%	28.7%	22.3%	12.1%	2.2%
	Lyon	1.4%	5.2%	15.7%	12.7%	25.0%	21.6%	15.4%	3.0%
Mitchell	1.2%	4.8%	14.9%	11.3%	23.9%	22.5%	17.5%	4.0%	
Montgomery	1.1%	4.7%	13.9%	10.9%	25.4%	23.6%	16.7%	3.7%	
O'Brien	1.1%	4.6%	13.6%	12.6%	24.1%	22.8%	17.5%	3.8%	

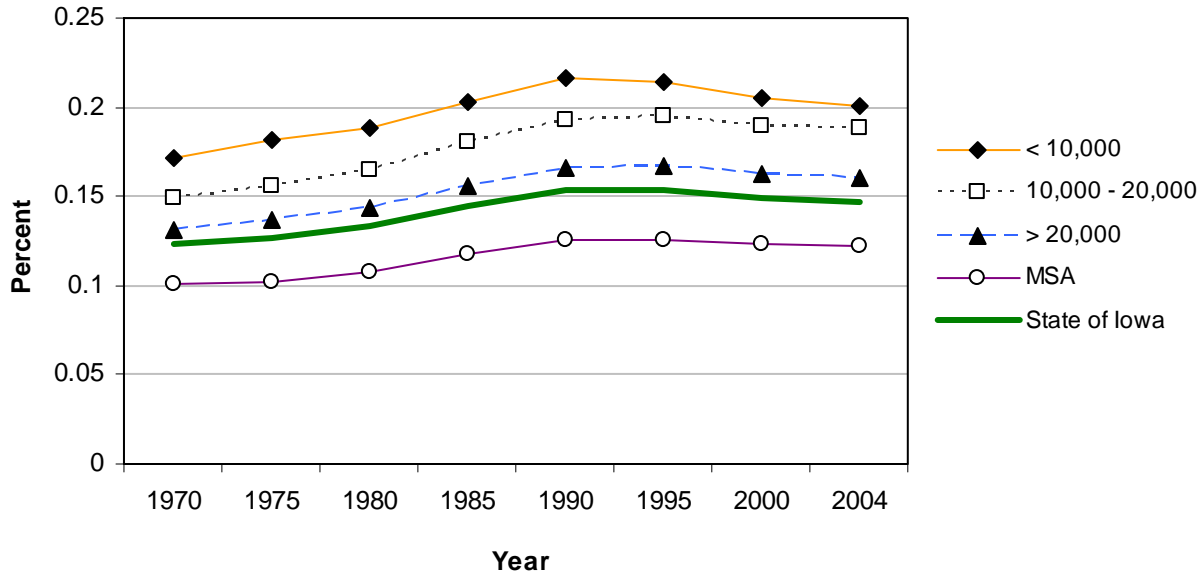
Average Annual Population Distribution by Age: 1996-2004 (cont.)

	County	% < 1	% 1-4	% 5-14	% 15-24	% 25-44	% 45-64	% 65-84	% 85 +
Counties with Average Population 10,000 – 20,000	Page	1.0%	4.3%	12.4%	12.8%	26.4%	23.1%	16.7%	3.2%
	Poweshiek	1.0%	4.3%	12.5%	17.3%	24.5%	22.7%	14.7%	3.0%
	Sac	1.1%	4.3%	13.6%	11.5%	23.4%	23.5%	18.6%	4.0%
	Shelby	1.0%	4.5%	14.6%	11.3%	24.8%	23.1%	17.3%	3.3%
	Tama	1.3%	5.2%	14.3%	12.3%	25.0%	23.1%	15.5%	3.2%
	Union	1.1%	4.5%	12.9%	12.8%	25.6%	24.2%	15.9%	3.0%
	Winnebago	1.0%	4.4%	13.3%	14.5%	24.0%	23.8%	15.6%	3.5%
	Wright	1.1%	4.5%	13.5%	11.3%	24.4%	23.9%	17.4%	3.9%
	Total	1.1%	4.6%	13.8%	12.4%	25.3%	23.8%	15.9%	3.2%
Counties with Average Population > 20,000	Boone	1.2%	4.7%	13.6%	13.1%	27.5%	23.6%	13.6%	2.7%
	Buchanan	1.4%	5.5%	15.7%	13.5%	26.4%	22.8%	12.5%	2.1%
	Buena Vista	1.1%	4.6%	14.2%	17.0%	24.9%	21.2%	14.2%	2.8%
	Carroll	1.2%	4.8%	14.9%	12.9%	25.7%	21.8%	15.7%	3.1%
	Cerro Gordo	1.1%	4.7%	13.1%	13.1%	26.7%	23.6%	15.0%	2.6%
	Clinton	1.2%	5.0%	14.1%	12.9%	27.1%	23.7%	13.7%	2.2%
	Des Moines	1.2%	4.9%	13.5%	12.8%	26.4%	24.7%	14.0%	2.5%
	Fayette	1.1%	4.5%	13.8%	13.5%	25.0%	23.1%	16.0%	3.0%
	Henry	1.1%	4.7%	13.6%	13.7%	29.4%	22.8%	12.3%	2.5%
	Jackson	1.1%	4.7%	14.6%	12.3%	26.4%	23.8%	14.6%	2.6%
	Jasper	1.2%	4.8%	13.7%	11.9%	28.6%	23.7%	13.9%	2.2%
	Lee	1.1%	4.7%	13.5%	12.2%	26.8%	25.1%	14.1%	2.5%
	Mahaska	1.3%	5.2%	14.0%	14.2%	27.0%	22.1%	13.8%	2.5%
	Marion	1.2%	4.9%	14.0%	15.1%	26.5%	22.4%	13.3%	2.7%
	Marshall	1.3%	5.0%	13.7%	12.7%	26.3%	24.4%	14.2%	2.3%
	Muscatine	1.4%	5.5%	14.8%	13.3%	28.9%	23.2%	11.1%	1.9%
	Plymouth	1.2%	5.2%	15.5%	13.3%	26.0%	22.8%	13.5%	2.4%
	Sioux	1.3%	5.3%	14.8%	20.3%	23.6%	19.6%	12.7%	2.3%
	Wapello	1.2%	4.7%	13.0%	13.7%	26.2%	23.5%	14.9%	2.7%
	Webster	1.2%	5.0%	13.5%	15.2%	25.5%	22.2%	14.6%	2.7%
Winneshiek	0.9%	4.0%	12.6%	21.8%	24.0%	21.0%	13.1%	2.5%	
Total	1.2%	4.9%	13.9%	14.0%	26.5%	23.1%	13.9%	2.5%	
MSA Counties	Benton	1.2%	5.1%	15.4%	12.4%	29.1%	21.7%	12.7%	2.4%
	Blackhawk	1.2%	4.8%	12.6%	19.7%	25.5%	22.2%	12.0%	2.1%
	Bremer	1.1%	4.3%	13.3%	17.3%	23.9%	24.1%	13.4%	2.7%
	Dallas	1.4%	6.0%	15.0%	12.7%	32.3%	21.6%	9.4%	1.7%
	Dubuque	1.3%	5.2%	14.1%	14.8%	27.2%	22.7%	12.6%	2.2%
	Grundy	0.9%	4.3%	14.1%	11.8%	25.0%	24.6%	15.9%	3.2%
	Guthrie	1.1%	4.3%	13.0%	11.2%	25.0%	25.1%	17.2%	3.1%
	Harrison	1.1%	4.7%	14.7%	11.9%	26.9%	23.0%	14.8%	2.9%
	Johnson	1.2%	4.5%	10.6%	26.7%	31.3%	18.0%	6.5%	1.1%
	Jones	1.1%	4.3%	13.4%	12.9%	29.2%	23.4%	13.4%	2.3%
	Linn	1.4%	5.5%	13.9%	14.0%	30.4%	22.4%	10.6%	1.7%
	Madison	1.3%	5.4%	14.8%	12.3%	27.6%	23.7%	12.2%	2.7%
	Mills	1.1%	4.9%	15.0%	12.4%	28.4%	25.6%	10.9%	1.8%
	Polk	1.5%	5.9%	13.9%	13.4%	32.2%	21.9%	9.6%	1.5%
	Pottawattamie	1.4%	5.2%	14.3%	13.7%	28.6%	23.1%	12.1%	1.6%
	Scott	1.4%	5.5%	14.6%	13.9%	29.4%	23.3%	10.3%	1.5%
	Story	1.1%	4.0%	9.9%	32.1%	25.9%	17.0%	8.4%	1.6%
	Warren	1.2%	5.2%	14.9%	15.1%	28.2%	23.5%	10.2%	1.7%
	Washington	1.4%	5.3%	14.3%	11.9%	26.9%	22.5%	14.6%	3.2%
	Woodbury	1.5%	6.0%	15.1%	14.5%	28.3%	21.2%	11.4%	1.9%
Total	1.4%	5.3%	13.6%	16.1%	29.4%	21.9%	10.6%	1.8%	

Source: Population Division, U.S. Census Bureau and SEER*Stat

Aging Trend in Iowa

Percent of Iowans Age 65 and Older



Estimated Year 2000 U.S. Standard Population

Age Range	Population	Percent of Total
< 1	13,818	1.4%
01-04	55,317	5.5%
05-09	72,533	7.3%
10-14	73,032	7.3%
15-19	72,169	7.2%
20-24	66,478	6.6%
25-29	64,529	6.5%
30-34	71,044	7.1%
35-39	80,762	8.1%
40-44	81,851	8.2%
45-49	72,118	7.2%
50-54	62,716	6.3%
55-59	48,454	4.8%
60-64	38,793	3.9%
65-69	34,264	3.4%
70-74	31,773	3.2%
75-79	26,999	2.7%
80-84	17,842	1.8%
85+	15,508	1.6%
Total	1,000,000	100.0%

*Source: Population Division, U.S. Census Bureau, and SEER*Stat*