

## Prenatal and Infant Health

Each year families across the United States bring home a healthy baby who has all the potential for a full and productive life. However, some families will suffer the loss of their child soon after birth.

Infant morbidity and mortality are critical indicators of the health of a population. Low birth weight and preterm birth result in a significant loss of life; surviving infants often sustain residual injuries that affect quality of life, and there is substantial financial cost to individuals and to society in caring for these children.

Certain factors have proven to increase the likelihood of delivering a low birth weight or preterm infant, such as (1) multiple births; (2) cigarette smoking during pregnancy; (3) substance abuse immediately prior to conception and during pregnancy (including alcohol abuse); (4) maternal age extremes; and (5) short inter-pregnancy interval.

Birth defects rank as the leading cause of mortality in full-term newborn babies in the United States. Iowa's overall birth defect rate is approximately 4.6% of all births. The state of Iowa has taken a leadership role in birth defect surveillance and serves as a model to other states. Iowa has also partnered with the March of Dimes' Folic Acid education campaign and the Preterm Birth Prevention campaign. Adequate folic acid intake by women of reproductive years has been demonstrated to decrease the risk of neural tube defects in children. Early prenatal care for mothers and health education to women and medical providers allow for a healthier pregnancy and improved birth outcomes.

Interventions need to focus on providing preconceptional health care to women, early and comprehensive prenatal care, and family support that includes promotion of healthy lifestyles.

### IN AN AVERAGE WEEK IN IOWA<sup>1</sup>

- ✓ 739 babies are born.
- ✓ 62 babies are born to teen mothers.
- ✓ 50 babies are born to mothers who receive inadequate prenatal care.
- ✓ 52 babies are born with low birth weight.
- ✓ 87 babies are born preterm.
- ✓ 4 babies die before their first birthday.

<sup>1</sup>Source: March of Dimes perinatal statistics: [www.marchofdimes.com/peristats](http://www.marchofdimes.com/peristats)

## Live Births 2004-2005

	County	#	Crude <sup>1</sup> (Rank <sup>2</sup> )	County	#	Crude <sup>1</sup> (Rank <sup>2</sup> )	
Counties with Average Population < 10,000	Adair	146	9.3 (96)	Monona	198	10.3 (79)	
	Adams	80	9.4 (94)	Monroe	158	10.1 (84)	
	Audubon	119	9.3 (97)	Osceola	153	11.4 (60)	
	Clarke	256	13.9 (10)	Palo Alto	226	11.6 (56)	
	Davis	255	14.8 (04)	Pocahontas	162	10.1 (83)	
	Decatur	204	11.8 (53)	Ringgold	136	12.8 (26)	
	Fremont	164	10.6 (78)	Taylor	147	11.1 (66)	
	Howard	250	12.8 (27)	Van Buren	186	12.0 (48)	
	Ida	161	10.9 (70)	Wayne	157	11.9 (49)	
	Lucas	209	10.8 (74)	Worth	155	10.0 (86)	
				<b>Total</b>	3,522	11.3	
	Counties with Average Population 10,000 – 20,000	Allamakee	411	13.9 (11)	Hardin	407	11.3 (63)
		Appanoose	329	12.1 (47)	Humboldt	264	13.1 (21)
Butler		350	11.6 (55)	Iowa	390	12.2 (44)	
Calhoun		215	10.2 (81)	Jefferson	323	10.1 (85)	
Cass		321	11.3 (62)	Keokuk	258	11.5 (58)	
Cedar		399	10.9 (69)	Kossuth	356	11.0 (68)	
Cherokee		226	9.2 (98)	Louisa	293	12.3 (41)	
Chickasaw		310	12.4 (36)	Lyon	313	13.4 (20)	
Clay		409	12.1 (46)	Mitchell	258	11.8 (52)	
Clayton		397	10.9 (73)	Montgomery	267	11.8 (54)	
Crawford		456	13.5 (18)	O'Brien	355	12.3 (42)	
Delaware		399	11.1 (67)	Page	335	10.3 (80)	
Dickinson		331	9.9 (88)	Poweshiek	378	10.0 (87)	
Emmet		287	13.6 (17)	Sac	243	11.3 (61)	
Floyd		415	12.6 (31)	Shelby	216	8.5 (99)	
Franklin		261	12.1 (45)	Tama	493	13.7 (14)	
Greene		193	9.6 (92)	Union	295	12.3 (40)	
Hamilton		386	11.9 (51)	Winnebago	221	9.7 (90)	
Hancock		272	11.5 (57)	Wright	351	12.9 (25)	
			<b>Total</b>	12,383	11.6		
Counties with Average Population > 20,000	Boone	597	11.3 (64)	Lee	792	10.8 (76)	
	Buchanan	588	14.0 (08)	Mahaska	574	12.9 (23)	
	Buena Vista	560	13.9 (12)	Marion	822	12.6 (33)	
	Carroll	529	12.6 (32)	Marshall	1,254	15.8 (02)	
	Cerro Gordo	971	10.9 (72)	Muscatine	1,174	13.8 (13)	
	Clinton	1,222	12.3 (43)	Plymouth	637	12.8 (29)	
	Des Moines	1,025	12.5 (35)	Sioux	943	14.6 (05)	
	Fayette	459	10.8 (75)	Wapello	980	13.7 (16)	
	Henry	501	12.3 (39)	Webster	965	12.3 (37)	
	Jackson	391	9.7 (91)	Winneshiek	396	9.3 (95)	
	Jasper	895	11.9 (50)	<b>Total</b>	16,275	12.5	
MSA Counties	Benton	606	11.3 (65)	Linn	5,542	14.0 (09)	
	Black Hawk	3,398	13.5 (19)	Madison	385	12.8 (28)	
	Bremer	505	10.7 (77)	Mills	380	12.6 (34)	
	Dallas	1,452	14.3 (07)	Polk	12,887	16.2 (01)	
	Dubuque	2,329	12.7 (30)	Pottawattamie	2,448	13.7 (15)	
	Grundy	235	9.5 (93)	Scott	4,616	14.4 (06)	
	Guthrie	233	10.2 (82)	Story	1,847	11.5 (59)	
	Harrison	313	9.9 (89)	Warren	1,056	12.3 (38)	
	Johnson	3,017	12.9 (24)	Washington	555	13.0 (22)	
	Jones	447	10.9 (71)	Woodbury	3,212	15.6 (03)	
				<b>Total</b>	45,463	14	
	<b>State Total</b>	77,643	13.1				

<sup>1</sup>Rates per 1,000 population

<sup>2</sup>Rank among 99 Iowa counties

Source: Iowa Department of Public Health, Vital Statistics, Birth Certificates

## Out-of-Wedlock Births 2004-2005

	County	#	Crude <sup>1</sup> (Rank <sup>2</sup> )	County	#	Crude <sup>1</sup> (Rank <sup>2</sup> )	
Counties with Average Population < 10,000	Adair	40	274.0 (60)	Monona	80	404.0 (08)	
	Adams	28	350.0 (28)	Monroe	38	240.5 (78)	
	Audubon	43	361.3 (20)	Osceola	35	228.8 (81)	
	Clarke	92	359.4 (23)	Palo Alto	56	247.8 (75)	
	Davis	40	156.9 (98)	Pocahontas	47	290.1 (52)	
	Decatur	51	250.0 (72)	Ringgold	36	264.7 (64)	
	Fremont	56	341.5 (31)	Taylor	38	258.5 (66)	
	Howard	52	208.0 (89)	Van Buren	51	274.2 (59)	
	Ida	44	273.3 (61)	Wayne	48	305.7 (43)	
	Lucas	50	239.2 (79)	Worth	47	303.2 (46)	
				<b>Total</b>	972	276.0	
	Counties with Average Population 10,000 – 20,000	Allamakee	93	226.3 (83)	Hardin	130	319.4 (37)
		Appanoose	127	386.0 (15)	Humboldt	92	348.5 (29)
Butler		96	274.3 (58)	Iowa	81	207.7 (90)	
Calhoun		59	274.4 (57)	Jefferson	106	328.2 (34)	
Cass		98	305.3 (44)	Keokuk	83	321.7 (36)	
Cedar		94	235.6 (80)	Kossuth	95	266.9 (63)	
Cherokee		71	314.2 (39)	Louisa	104	354.9 (26)	
Chickasaw		78	251.6 (70)	Lyon	33	105.4 (99)	
Clay		121	295.8 (48)	Mitchell	46	178.3 (96)	
Clayton		99	249.4 (73)	Montgomery	113	423.2 (04)	
Crawford		165	361.8 (19)	O'Brien	97	273.2 (62)	
Delaware		100	250.6 (71)	Page	106	316.4 (38)	
Dickinson		94	284.0 (55)	Poweshiek	124	328.0 (35)	
Emmet		105	365.9 (18)	Sac	50	205.8 (91)	
Floyd		148	356.6 (25)	Shelby	63	291.7 (51)	
Franklin		94	360.2 (22)	Tama	173	350.9 (27)	
Greene		65	336.8 (32)	Union	106	359.3 (24)	
Hamilton		111	287.6 (54)	Winnebago	65	294.1 (49)	
Hancock		75	275.7 (56)	Wright	140	398.9 (12)	
			<b>Total</b>	3,700	298.8		
Counties with Average Population > 20,000	Boone	154	258.0 (67)	Lee	330	416.7 (05)	
	Buchanan	150	255.1 (69)	Mahaska	180	313.6 (40)	
	Buena Vista	209	373.2 (17)	Marion	175	212.9 (87)	
	Carroll	135	255.2 (68)	Marshall	504	401.9 (09)	
	Cerro Gordo	364	374.9 (16)	Muscatine	454	386.7 (14)	
	Clinton	490	401.0 (11)	Plymouth	154	241.8 (76)	
	Des Moines	490	478.0 (01)	Sioux	148	156.9 (97)	
	Fayette	152	331.2 (33)	Wapello	393	401.0 (10)	
	Henry	172	343.3 (30)	Webster	436	451.8 (02)	
	Jackson	141	360.6 (21)	Winneshiek	89	224.7 (84)	
	Jasper	259	289.4 (53)	<b>Total</b>	5,579	342.8	
MSA Counties	Benton	129	212.9 (88)	Linn	1,725	311.3 (41)	
	Black Hawk	1,401	412.3 (06)	Madison	93	241.6 (77)	
	Bremer	109	215.8 (85)	Mills	99	260.5 (65)	
	Dallas	311	214.2 (86)	Polk	3,981	308.9 (42)	
	Dubuque	680	292.0 (50)	Pottawattamie	974	397.9 (13)	
	Grundy	43	183.0 (95)	Scott	1,881	407.5 (07)	
	Guthrie	58	248.9 (74)	Story	348	188.4 (94)	
	Harrison	94	300.3 (47)	Warren	240	227.3 (82)	
	Johnson	592	196.2 (93)	Washington	112	201.8 (92)	
	Jones	136	304.3 (45)	Woodbury	1,395	434.3 (03)	
				<b>Total</b>	14,401	316.8	
	<b>State Total</b>	24,652	317.5				

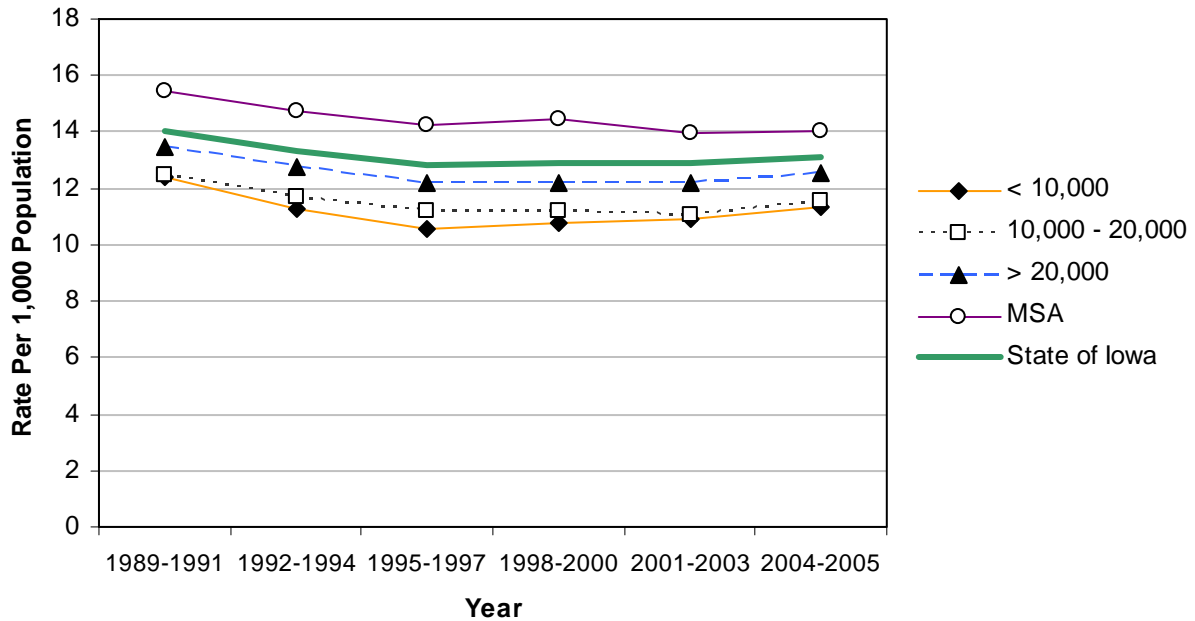
<sup>1</sup>Rates per 1,000 births

<sup>2</sup>Rank among 99 Iowa counties

Source: Iowa Department of Public Health, Vital Statistics, Birth Certificates

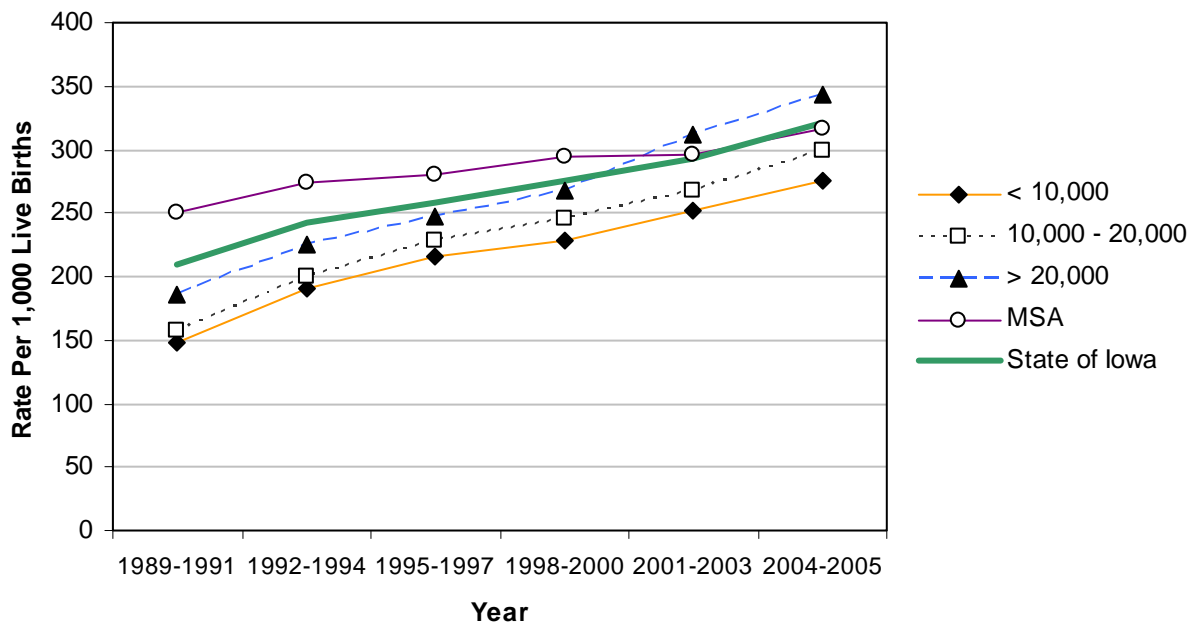
## Live Births by County Group 1989-2005

Crude Rates



## Out of Wedlock Births by County Group 1989-2005

Crude Rates



## Mothers under Age 20 2004-2005

	Counties with Average Population < 10,000			Counties with Average Population 10,000 – 20,000			Counties with Average Population > 20,000			MSA Counties			
	County	#	Crude <sup>1</sup>	County	#	Crude <sup>1</sup>	County	#	Crude <sup>1</sup>	County	#	Crude <sup>1</sup>	
Counties with Average Population < 10,000	Adair	9	61.6	Monona	19	96.0							
	Adams	*	*	Monroe	16	101.3							
	Audubon	19	159.7	Osceola	14	91.5							
	Clarke	28	109.4	Palo Alto	15	66.4							
	Davis	16	62.7	Pocahontas	13	80.2							
	Decatur	21	102.9	Ringgold	13	95.6							
	Fremont	20	122.0	Taylor	9	61.2							
	Howard	13	52.0	Van Buren	20	107.5							
	Ida	19	118.0	Wayne	21	133.8							
	Lucas	16	76.6	Worth	14	90.3							
				<b>Total</b>	<b>315-319</b>	<b>90.4-90.6</b>							
	Counties with Average Population 10,000 – 20,000	Allamakee	33	80.3	Hardin	38	93.4						
		Appanoose	43	130.7	Humboldt	22	83.3						
Butler		30	85.7	Iowa	12	30.8							
Calhoun		22	102.3	Jefferson	23	71.2							
Cass		30	93.5	Keokuk	29	112.4							
Cedar		24	60.2	Kossuth	26	73.0							
Cherokee		23	101.8	Louisa	37	126.3							
Chickasaw		21	67.7	Lyon	17	54.3							
Clay		32	78.2	Mitchell	17	65.9							
Clayton		25	63.0	Montgomery	38	142.3							
Crawford		51	111.8	O'Brien	39	109.9							
Delaware		25	62.7	Page	30	89.6							
Dickinson		19	57.4	Poweshiek	29	76.7							
Emmet		26	90.6	Sac	14	57.6							
Floyd		40	96.4	Shelby	14	64.8							
Franklin		32	122.6	Tama	51	103.4							
Greene		24	124.4	Union	26	88.1							
Hamilton		29	75.1	Winnebago	17	76.9							
Hancock	21	77.2	Wright	39	111.1								
			<b>Total</b>	<b>1,068</b>	<b>86.2</b>								
Counties with Average Population > 20,000	Boone	42	70.4	Lee	90	113.6							
	Buchanan	48	81.6	Mahaska	57	99.3							
	Buena Vista	79	141.1	Marion	59	71.8							
	Carroll	41	77.5	Marshall	177	141.1							
	Cerro Gordo	96	98.9	Muscatine	136	115.8							
	Clinton	127	103.9	Plymouth	32	50.2							
	Des Moines	128	124.9	Sioux	69	73.2							
	Fayette	34	74.1	Wapello	114	116.3							
	Henry	41	81.8	Webster	113	117.1							
	Jackson	35	89.5	Winneshiek	19	48.0							
	Jasper	86	96.1	<b>Total</b>	<b>1,623</b>	<b>99.7</b>							
MSA Counties	Benton	28	46.2	Linn	377	68.0							
	Black Hawk	344	101.2	Madison	28	72.7							
	Bremer	25	49.5	Mills	19	50.0							
	Dallas	83	57.2	Polk	1,005	78.0							
	Dubuque	177	76.0	Pottawattamie	264	107.8							
	Grundy	11	46.8	Scott	504	109.2							
	Guthrie	16	68.7	Story	58	31.4							
	Harrison	22	70.3	Warren	70	66.3							
	Johnson	129	42.8	Washington	32	57.7							
	Jones	42	94.0	Woodbury	374	116.4							
				<b>Total</b>	<b>3,608</b>	<b>79.4</b>							
<b>State Total</b>	<b>6,614-8</b>	<b>85.1-85.2</b>											

<sup>1</sup>Rates per 1,000 births

Source: Iowa Department of Public Health, Vital Statistics, Birth Certificates

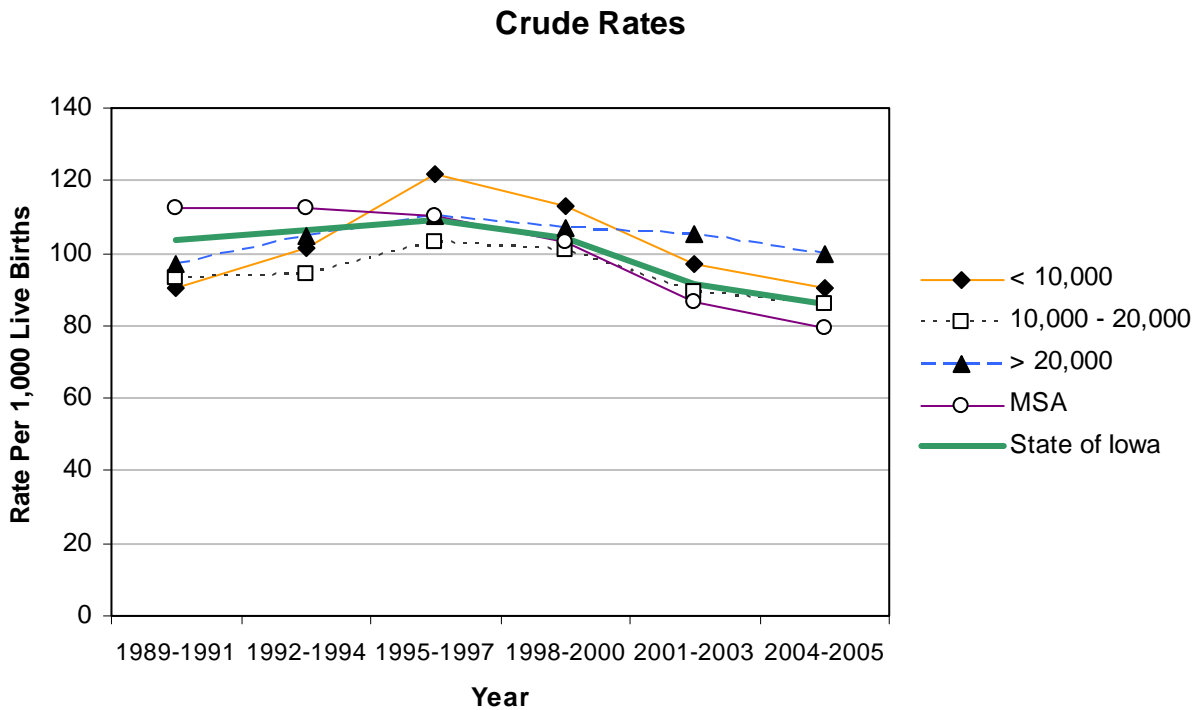
## Low Birth Weight (< 2500 Grams) 2004-2005

	Counties with Average Population < 10,000			Counties with Average Population 10,000 – 20,000			Counties with Average Population > 20,000			MSA Counties		
	County	#	Crude <sup>1</sup>	County	#	Crude <sup>1</sup>	County	#	Crude <sup>1</sup>	County	#	Crude <sup>1</sup>
	Adair	10	68.5		Monona	19	96.0					
	Adams	*	*		Monroe	6	38.0					
	Audubon	10	84.0		Osceola	9	58.8					
	Clarke	21	82.0		Palo Alto	22	97.3					
	Davis	13	51.0		Pocahontas	9	55.6					
	Decatur	20	98.0		Ringgold	10	73.5					
	Fremont	12	73.2		Taylor	9	61.2					
	Howard	22	88.0		Van Buren	23	123.7					
	Ida	16	99.4		Wayne	9	57.3					
	Lucas	8	38.3		Worth	13	83.9					
					<b>Total</b>	261-265	74.6-74.8					
	Allamakee	32	77.9		Hardin	35	86.0					
	Appanoose	37	112.5		Humboldt	12	45.5					
	Butler	34	97.1		Iowa	22	56.4					
	Calhoun	15	69.8		Jefferson	22	68.1					
	Cass	28	87.2		Keokuk	19	73.6					
	Cedar	34	85.2		Kossuth	25	70.2					
	Cherokee	9	39.8		Louisa	28	95.6					
	Chickasaw	23	74.2		Lyon	19	60.7					
	Clay	19	46.5		Mitchell	16	62.0					
	Clayton	23	57.9		Montgomery	16	59.9					
	Crawford	21	46.1		O'Brien	19	53.5					
	Delaware	24	60.2		Page	22	65.7					
	Dickinson	20	60.4		Poweshiek	21	55.6					
	Emmet	24	83.6		Sac	19	78.2					
	Floyd	35	84.3		Shelby	14	64.8					
	Franklin	11	42.1		Tama	39	79.1					
	Greene	12	62.2		Union	27	91.5					
	Hamilton	41	106.2		Winnebago	21	95.0					
	Hancock	12	44.1		Wright	27	76.9					
					<b>Total</b>	877	70.8					
	Boone	28	46.9		Lee	51	64.4					
	Buchanan	38	64.6		Mahaska	47	81.9					
	Buena Vista	40	71.4		Marion	64	77.9					
	Carroll	25	47.3		Marshall	90	71.8					
	Cerro Gordo	74	76.2		Muscatine	69	58.8					
	Clinton	113	92.5		Plymouth	34	53.4					
	Des Moines	61	59.5		Sioux	47	49.8					
	Fayette	20	43.6		Wapello	85	86.7					
	Henry	34	67.9		Webster	55	57.0					
	Jackson	27	69.1		Winneshiek	20	50.5					
	Jasper	69	77.1		<b>Total</b>	1,091	67.0					
	Benton	26	42.9		Linn	385	69.5					
	Black Hawk	299	88.0		Madison	30	77.9					
	Bremer	28	55.4		Mills	30	78.9					
	Dallas	108	74.4		Polk	940	72.9					
	Dubuque	160	68.7		Pottawattamie	194	79.2					
	Grundy	25	106.4		Scott	336	72.8					
	Guthrie	15	64.4		Story	106	57.4					
	Harrison	28	89.5		Warren	64	60.6					
	Johnson	185	61.3		Washington	33	59.5					
	Jones	29	64.9		Woodbury	259	80.6					
					<b>Total</b>	3,280	72.1					
	<b>State Total</b>	5,509-13	71.0-71.1									

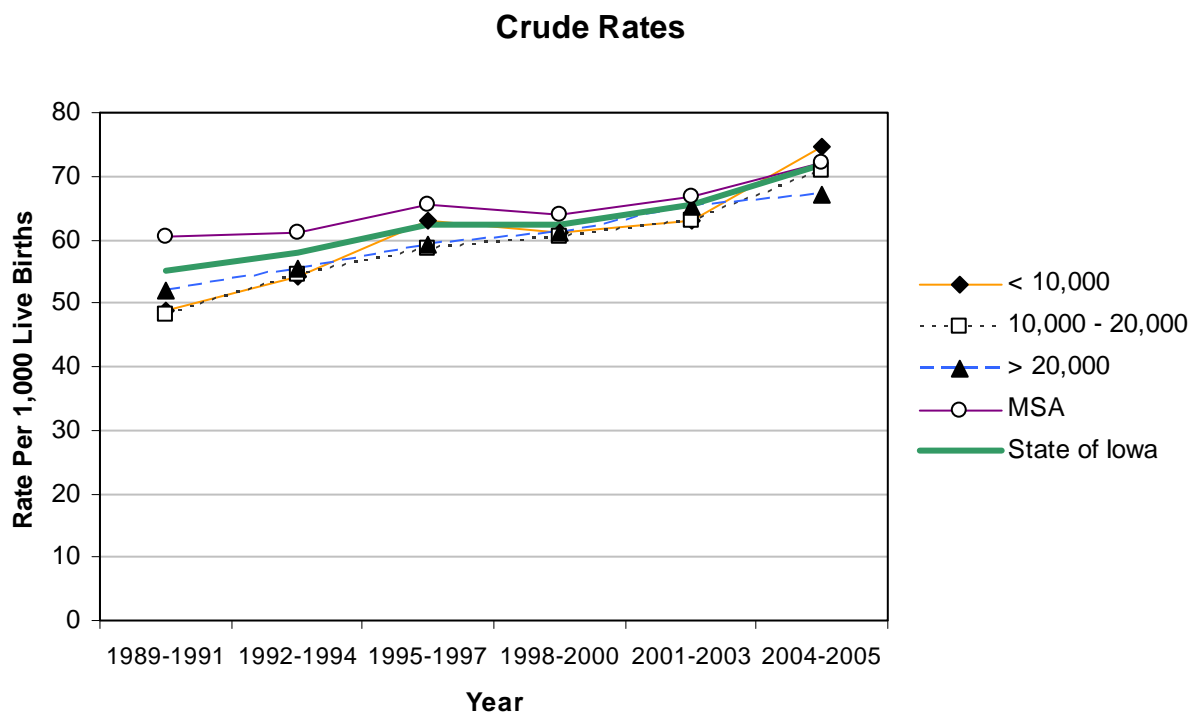
<sup>1</sup>Rates per 1,000 births

Source: Iowa Department of Public Health, Vital Statistics, Birth Certificates

## Mothers Under Age 20 by County Group 1989-2005



## Low Birth Weight (< 2500 grams) by County Group 1989-2005



## Mothers Who Began Prenatal Care in First Trimester 2004-2005

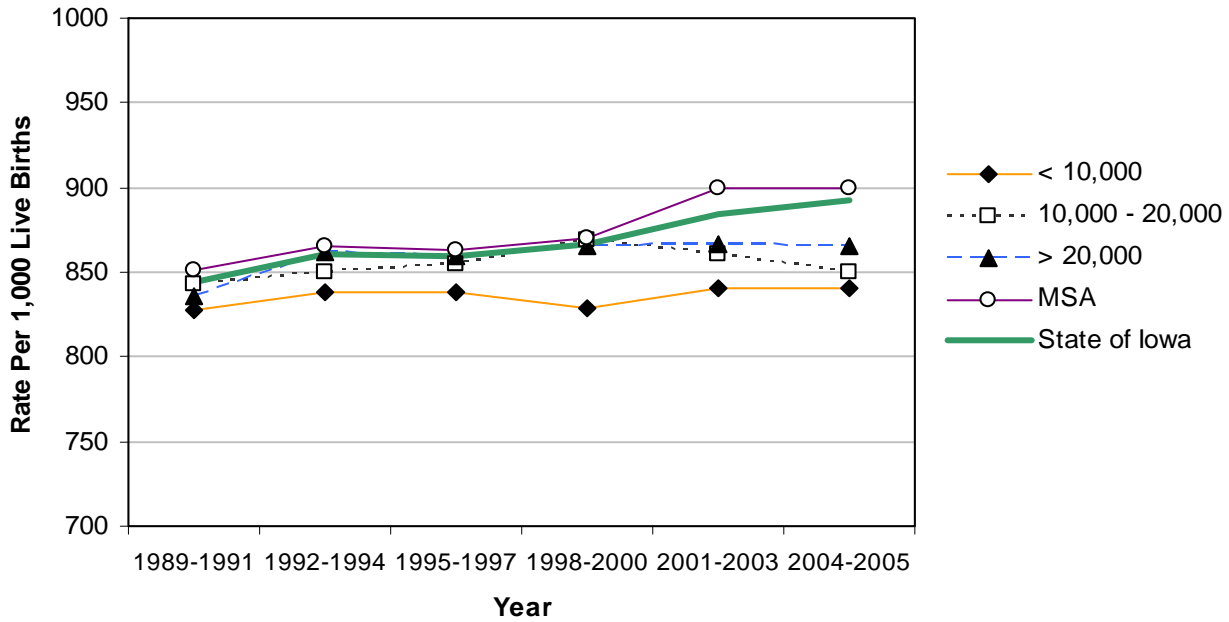
	County	#	Crude <sup>1</sup> (Rank <sup>2</sup> )	County	#	Crude <sup>1</sup> (Rank <sup>2</sup> )	
<b>Counties with Average Population &lt; 10,000</b>	Adair	134	917.8 (20)	Monona	187	944.4 (02)	
	Adams	72	900.0 (38)	Monroe	145	917.7 (21)	
	Audubon	108	907.6 (30)	Osceola	132	862.7 (61)	
	Clarke	216	843.8 (70)	Palo Alto	196	867.3 (56)	
	Davis	177	694.1 (97)	Pocahontas	135	833.3 (75)	
	Decatur	169	828.4 (76)	Ringgold	106	779.4 (89)	
	Fremont	137	835.4 (74)	Taylor	127	863.9 (59)	
	Howard	213	852.0 (67)	Van Buren	148	795.7 (85)	
	Ida	152	944.1 (03)	Wayne	129	821.7 (80)	
	Lucas	156	746.4 (92)	Worth	121	780.6 (88)	
				<b>Total</b>	2,960	840.4	
	<b>Counties with Average Population 10,000 – 20,000</b>	Allamakee	317	771.3 (90)	Hardin	357	877.1 (51)
		Appanoose	288	875.4 (53)	Humboldt	222	840.9 (72)
Butler		314	897.1 (40)	Iowa	364	933.3 (08)	
Calhoun		195	907.0 (31)	Jefferson	264	817.3 (81)	
Cass		280	872.3 (55)	Keokuk	233	903.1 (34)	
Cedar		372	932.3 (09)	Kossuth	315	884.8 (47)	
Cherokee		213	942.5 (04)	Louisa	267	911.3 (28)	
Chickasaw		265	854.8 (65)	Lyon	280	894.6 (42)	
Clay		363	887.5 (45)	Mitchell	183	709.3 (96)	
Clayton		327	823.7 (77)	Montgomery	231	865.2 (57)	
Crawford		375	822.4 (79)	O'Brien	330	929.6 (11)	
Delaware		344	862.2 (62)	Page	285	850.7 (69)	
Dickinson		285	861.0 (63)	Poweshiek	350	925.9 (16)	
Emmet		226	787.5 (87)	Sac	219	901.2 (37)	
Floyd		272	655.4 (99)	Shelby	198	916.7 (22)	
Franklin		188	720.3 (95)	Tama	401	813.4 (83)	
Greene		170	880.8 (49)	Union	261	884.7 (48)	
Hamilton		348	901.6 (36)	Winnebago	164	742.1 (93)	
Hancock		180	661.8 (98)	Wright	278	792.0 (86)	
			<b>Total</b>	10,524	849.9		
<b>Counties with Average Population &gt; 20,000</b>	Boone	541	906.2 (32)	Lee	694	876.3 (52)	
	Buchanan	484	823.1 (78)	Mahaska	524	912.9 (27)	
	Buena Vista	456	814.3 (82)	Marion	753	916.1 (23)	
	Carroll	505	954.6 (01)	Marshall	963	767.9 (91)	
	Cerro Gordo	712	733.3 (94)	Muscatine	1,047	891.8 (43)	
	Clinton	1,112	910.0 (29)	Plymouth	590	926.2 (15)	
	Des Moines	863	842.0 (71)	Sioux	825	874.9 (54)	
	Fayette	425	925.9 (16)	Wapello	787	803.1 (84)	
	Henry	444	886.2 (46)	Webster	834	864.2 (58)	
	Jackson	353	902.8 (35)	Winneshiek	342	863.6 (60)	
	Jasper	829	926.3 (14)	<b>Total</b>	14,083	865.3	
<b>MSA Counties</b>	Benton	571	942.2 (05)	Linn	5,075	915.7 (24)	
	Black Hawk	3,120	918.2 (19)	Madison	360	935.1 (07)	
	Bremer	470	930.7 (10)	Mills	327	860.5 (64)	
	Dallas	1,328	914.6 (25)	Polk	11,548	896.1 (41)	
	Dubuque	2,095	899.5 (39)	Pottawattamie	2,087	852.5 (66)	
	Grundy	220	936.2 (06)	Scott	3,928	851.0 (68)	
	Guthrie	205	879.8 (50)	Story	1,711	926.4 (13)	
	Harrison	278	888.2 (44)	Warren	980	928.0 (12)	
	Johnson	2,782	922.1 (18)	Washington	464	836.0 (73)	
	Jones	404	903.8 (33)	Woodbury	2,935	913.8 (26)	
				<b>Total</b>	40,888	899.4	
		<b>State Total</b>	68,455	881.7			

<sup>1</sup>Rates per 1,000 births

Source: Iowa Department of Public Health, Vital Statistics, Birth Certificates

## Mothers Who Began Prenatal Care in First Trimester by County Group 1989-2005

**Crude Rates**



## Mothers Who Smoked During Pregnancy 2004-2005

	County	#	Crude <sup>1</sup> (Rank <sup>2</sup> )	County	#	Crude <sup>1</sup> (Rank <sup>2</sup> )	
Counties with Average Population < 10,000	Adair	32	219.2 (22)	Monona	36	181.8 (44)	
	Adams	11	137.5 (75)	Monroe	28	177.2 (50)	
	Audubon	22	184.9 (40)	Osceola	19	124.2 (84)	
	Clarke	50	195.3 (33)	Palo Alto	33	146.0 (68)	
	Davis	35	137.3 (76)	Pocahontas	36	222.2 (19)	
	Decatur	42	205.9 (28)	Ringgold	31	227.9 (15)	
	Fremont	44	268.3 (05)	Taylor	31	210.9 (26)	
	Howard	28	112.0 (88)	Van Buren	36	193.5 (35)	
	Ida	34	211.2 (25)	Wayne	33	210.2 (27)	
	Lucas	38	181.8 (44)	Worth	27	174.2 (55)	
				<b>Total</b>	<b>646</b>	<b>183.4</b>	
	Counties with Average Population 10,000 – 20,000	Allamakee	68	165.5 (58)	Hardin	81	199.0 (30)
		Appanoose	90	273.6 (03)	Humboldt	71	268.9 (04)
Butler		55	157.1 (63)	Iowa	52	133.3 (80)	
Calhoun		42	195.3 (32)	Jefferson	59	182.7 (42)	
Cass		74	230.5 (14)	Keokuk	46	178.3 (48)	
Cedar		50	125.3 (83)	Kossuth	65	182.6 (43)	
Cherokee		58	256.6 (07)	Louisa	40	136.5 (78)	
Chickasaw		45	145.2 (69)	Lyon	30	95.8 (95)	
Clay		90	220.0 (21)	Mitchell	18	69.8 (97)	
Clayton		70	176.3 (51)	Montgomery	79	295.9 (01)	
Crawford		59	129.4 (82)	O'Brien	56	157.7 (62)	
Delaware		66	165.4 (59)	Page	75	223.9 (17)	
Dickinson		59	178.2 (49)	Poweshiek	88	232.8 (13)	
Emmet		49	170.7 (56)	Sac	38	156.4 (64)	
Floyd		76	183.1 (41)	Shelby	38	175.9 (53)	
Franklin		32	122.6 (87)	Tama	69	140.0 (72)	
Greene		43	222.8 (18)	Union	70	237.3 (12)	
Hamilton		73	189.1 (37)	Winnebago	43	194.6 (34)	
Hancock		29	106.6 (92)	Wright	76	216.5 (23)	
			<b>Total</b>	<b>2,222</b>	<b>179.4</b>		
Counties with Average Population > 20,000	Boone	108	180.9 (46)	Lee	223	281.6 (02)	
	Buchanan	82	139.5 (73)	Mahaska	122	212.5 (24)	
	Buena Vista	60	107.1 (91)	Marion	116	141.1 (70)	
	Carroll	73	138.0 (74)	Marshall	194	154.7 (65)	
	Cerro Gordo	158	162.7 (61)	Muscatine	194	165.2 (60)	
	Clinton	326	266.8 (06)	Plymouth	79	124.0 (85)	
	Des Moines	230	224.4 (16)	Sioux	58	61.5 (98)	
	Fayette	102	222.2 (19)	Wapello	176	179.6 (47)	
	Henry	119	237.5 (11)	Webster	230	238.3 (10)	
	Jackson	75	191.8 (36)	Winneshiek	44	111.1 (89)	
	Jasper	182	203.4 (29)	<b>Total</b>	<b>2,951</b>	<b>181.3</b>	
MSA Counties	Benton	81	133.7 (79)	Linn	844	152.3 (66)	
	Black Hawk	594	174.8 (54)	Madison	57	148.1 (67)	
	Bremer	56	110.9 (90)	Mills	75	197.4 (31)	
	Dallas	137	94.4 (96)	Polk	1,761	136.6 (77)	
	Dubuque	307	131.8 (81)	Pottawattamie	625	255.3 (08)	
	Grundy	29	123.4 (86)	Scott	870	188.5 (38)	
	Guthrie	41	176.0 (52)	Story	178	96.4 (94)	
	Harrison	78	249.2 (09)	Warren	149	141.1 (71)	
	Johnson	150	49.7 (99)	Washington	59	106.3 (93)	
	Jones	75	167.8 (57)	Woodbury	601	187.1 (39)	
				<b>Total</b>	<b>6,767</b>	<b>148.8</b>	
<b>State Total</b>	<b>12,586</b>	<b>162.1</b>					

<sup>1</sup>Rates per 1,000 births

<sup>2</sup>Rank among 99 Iowa counties

Source: Iowa Department of Public Health, Vital Statistics, Birth Certificates

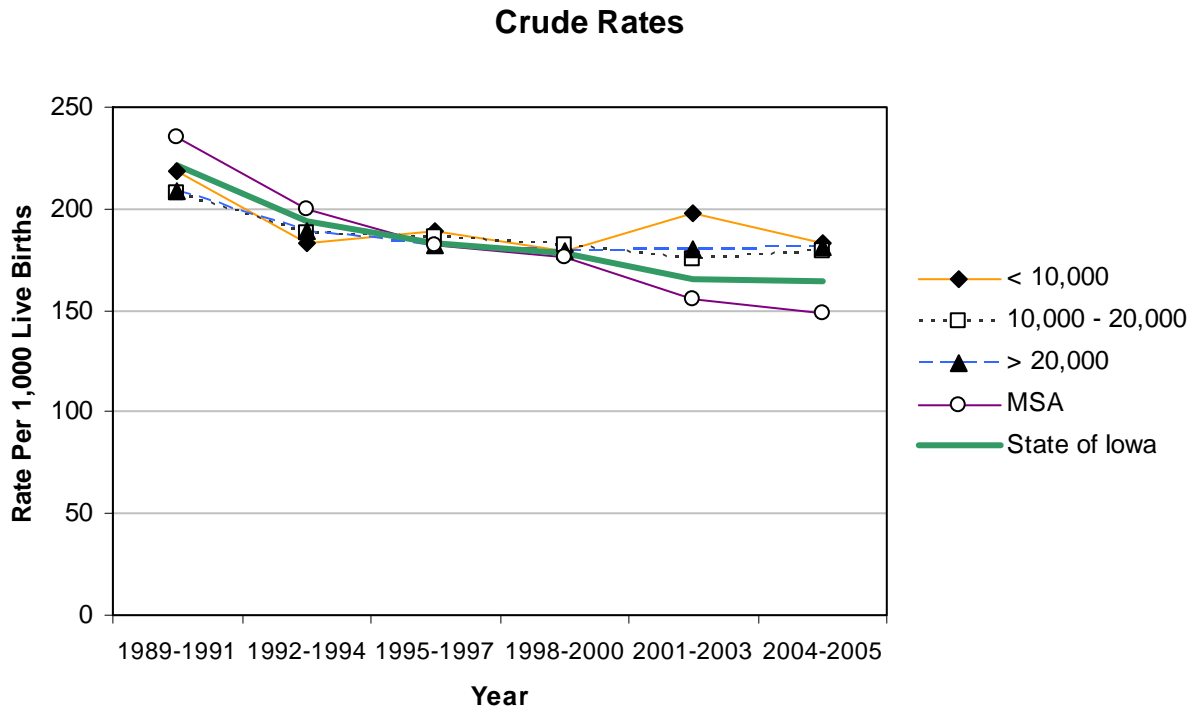
## Mothers Who Drank During Pregnancy 2004-2005

	County	#	Crude <sup>1</sup>	County	#	Crude <sup>1</sup>	
Counties with Average Population < 10,000	Adair	*	*	Monona	*	*	
	Adams	*	*	Monroe	*	*	
	Audubon	*	*	Osceola	*	*	
	Clarke	*	*	Palo Alto	*	*	
	Davis	*	*	Pocahontas	*	*	
	Decatur	*	*	Ringgold	*	*	
	Fremont	*	*	Taylor	*	*	
	Howard	*	*	Van Buren	*	*	
	Ida	*	*	Wayne	*	*	
	Lucas	*	*	Worth	*	*	
				<b>Total</b>	19	5.4	
	Counties with Average Population 10,000 – 20,000	Allamakee	6	18.2	Hardin	*	*
		Appanoose	*	*	Humboldt	*	*
Butler		*	*	Iowa	*	*	
Calhoun		*	*	Jefferson	*	*	
Cass		*	*	Keokuk	*	*	
Cedar		*	*	Kossuth	*	*	
Cherokee		*	*	Louisa	5	17.1	
Chickasaw		7	17.1	Lyon	*	*	
Clay		*	*	Mitchell	*	*	
Clayton		5	11.0	Montgomery	*	*	
Crawford		5	12.5	O'Brien	*	*	
Delaware		*	*	Page	*	*	
Dickinson		*	*	Poweshiek	*	*	
Emmet		6	14.5	Sac	*	*	
Floyd		*	*	Shelby	*	*	
Franklin		*	*	Tama	6	12.2	
Greene		*	*	Union	*	*	
Hamilton		*	*	Winnebago	*	*	
Hancock		6	18.2	Wright	*	*	
			<b>Total</b>	96	7.8		
Counties with Average Population > 20,000	Boone	6	10.1	Lee	9	11.4	
	Buchanan	*	*	Mahaska	*	*	
	Buena Vista	*	*	Marion	*	*	
	Carroll	*	*	Marshall	12	9.6	
	Cerro Gordo	*	*	Muscatine	8	6.8	
	Clinton	11	9.0	Plymouth	*	*	
	Des Moines	6	5.9	Sioux	5	5.3	
	Fayette	7	15.3	Wapello	*	*	
	Henry	*	*	Webster	6	6.2	
	Jackson	*	*	Winneshiek	*	*	
	Jasper	*	*	<b>Total</b>	98	6.0	
	MSA Counties	Benton	*	*	Linn	51	9.2
Black Hawk		18	5.3	Madison	*	*	
Bremer		*	*	Mills	*	*	
Dallas		9	6.2	Polk	84	6.5	
Dubuque		14	6.0	Pottawattamie	14	5.7	
Grundy		*	*	Scott	66	14.3	
Guthrie		*	*	Story	27	14.6	
Harrison		*	*	Warren	5	4.7	
Johnson		10	3.3	Washington	*	*	
Jones		*	*	Woodbury	19	5.9	
				<b>Total</b>	330	7.3	
<b>State Total</b>	543	7.0					

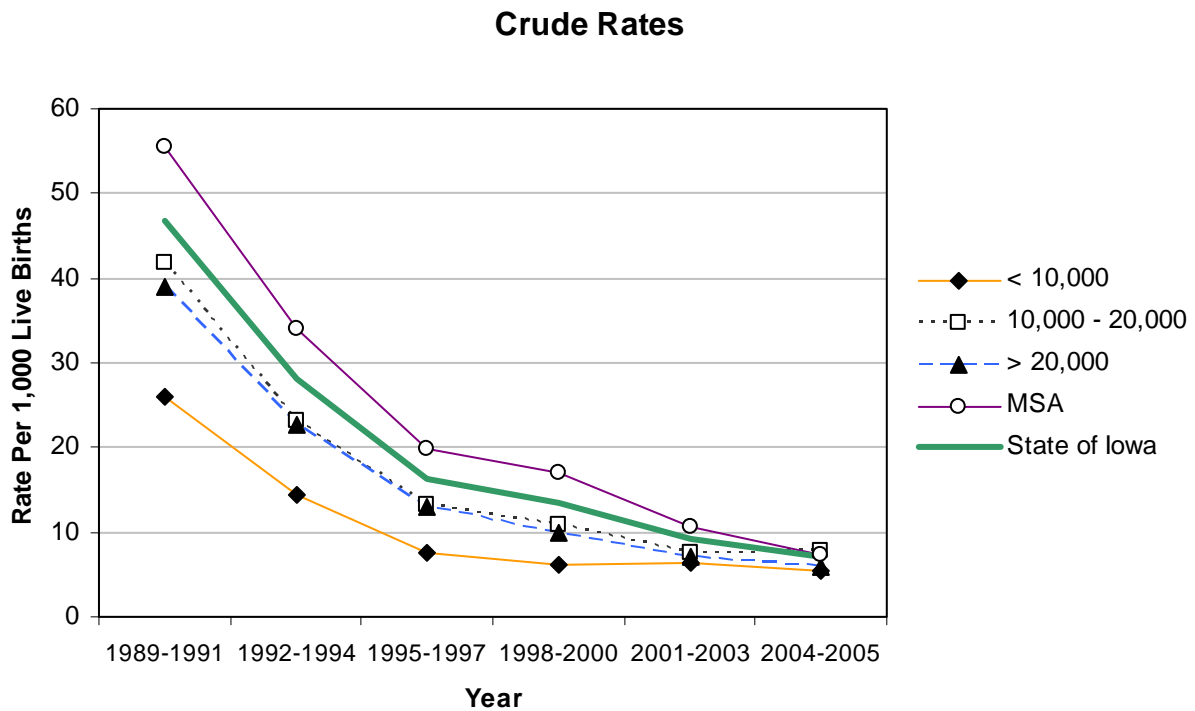
<sup>1</sup>Rates per 1,000 births

Source: Iowa Department of Public Health, Vital Statistics, Birth Certificates

## Mothers Who Smoked During Pregnancy by County Group 1989-2005



## Mothers Who Drank During Pregnancy by County Group 1989-2005



## Fetal Deaths 2004-2005

	County	#	Crude <sup>1</sup>	County	#	Crude <sup>1</sup>	
Counties with Average Population < 10,000	Adair	*	*	Monona	*	*	
	Adams	*	*	Monroe	*	*	
	Audubon	*	*	Osceola	*	*	
	Clarke	*	*	Palo Alto	*	*	
	Davis	*	*	Pocahontas	*	*	
	Decatur	*	*	Ringgold	*	*	
	Fremont	*	*	Taylor	*	*	
	Howard	*	*	Van Buren	*	*	
	Ida	*	*	Wayne	*	*	
	Lucas	*	*	Worth	*	*	
				<b>Total</b>	18	5.1	
	Counties with Average Population 10,000 – 20,000	Allamakee	*	*	Hardin	*	*
		Appanoose	*	*	Humboldt	*	*
Butler		*	*	Iowa	6	15.4	
Calhoun		*	*	Jefferson	*	*	
Cass		*	*	Keokuk	*	*	
Cedar		*	*	Kossuth	*	*	
Cherokee		*	*	Louisa	*	*	
Chickasaw		*	*	Lyon	*	*	
Clay		*	*	Mitchell	*	*	
Clayton		*	*	Montgomery	*	*	
Crawford		*	*	O'Brien	*	*	
Delaware		*	*	Page	*	*	
Dickinson		*	*	Poweshiek	*	*	
Emmet		*	*	Sac	*	*	
Floyd		*	*	Shelby	*	*	
Franklin		*	*	Tama	*	*	
Greene		*	*	Union	*	*	
Hamilton		*	*	Winnebago	*	*	
Hancock		*	*	Wright	*	*	
			<b>Total</b>	58	4.7		
Counties with Average Population > 20,000	Boone	*	*	Lee	5	6.3	
	Buchanan	7	11.9	Mahaska	*	*	
	Buena Vista	5	8.9	Marion	7	8.5	
	Carroll	*	*	Marshall	6	4.8	
	Cerro Gordo	6	6.2	Muscatine	7	6.0	
	Clinton	6	4.9	Plymouth	*	*	
	Des Moines	7	6.8	Sioux	*	*	
	Fayette	*	*	Wapello	6	6.1	
	Henry	*	*	Webster	*	*	
	Jackson	*	*	Winneshiek	*	*	
	Jasper	5	5.6	<b>Total</b>	85	5.2	
MSA Counties	Benton	*	*	Linn	36	6.5	
	Black Hawk	19	5.6	Madison	5	13.0	
	Bremer	*	*	Mills	*	*	
	Dallas	6	4.1	Polk	72	5.6	
	Dubuque	15	6.4	Pottawattamie	10	4.1	
	Grundy	*	*	Scott	33	7.1	
	Guthrie	*	*	Story	12	6.5	
	Harrison	*	*	Warren	*	*	
	Johnson	12	4.0	Washington	5	9.0	
	Jones	5	11.2	Woodbury	13	4.0	
				<b>Total</b>	256	5.6	
<b>State Total</b>	417	5.4					

<sup>1</sup>Rates per 1,000 births

Source: Iowa Department of Public Health, Vital Statistics, Birth Certificates

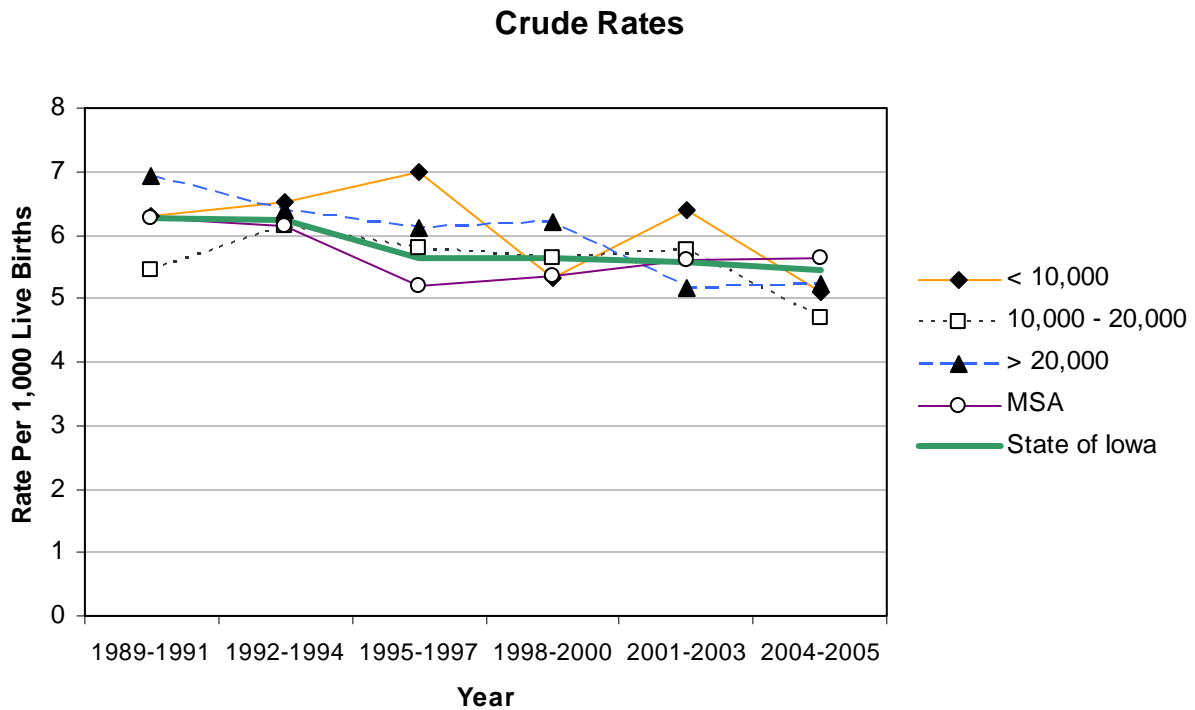
## Neonatal Deaths 2004-2005

	County	#	Crude <sup>1</sup>	County	#	Crude <sup>1</sup>	
Counties with Average Population < 10,000	Adair	*	*	Monona	*	*	
	Adams	*	*	Monroe	*	*	
	Audubon	*	*	Osceola	*	*	
	Clarke	*	*	Palo Alto	*	*	
	Davis	*	*	Pocahontas	*	*	
	Decatur	*	*	Ringgold	*	*	
	Fremont	*	*	Taylor	*	*	
	Howard	*	*	Van Buren	*	*	
	Ida	*	*	Wayne	*	*	
	Lucas	*	*	Worth	*	*	
				<b>Total</b>	12	3.4	
	Counties with Average Population 10,000 – 20,000	Allamakee	*	*	Hardin	*	*
		Appanoose	*	*	Humboldt	*	*
Butler		*	*	Iowa	*	*	
Calhoun		*	*	Jefferson	*	*	
Cass		*	*	Keokuk	*	*	
Cedar		*	*	Kossuth	*	*	
Cherokee		*	*	Louisa	*	*	
Chickasaw		*	*	Lyon	*	*	
Clay		*	*	Mitchell	*	*	
Clayton		*	*	Montgomery	*	*	
Crawford		*	*	O'Brien	*	*	
Delaware		*	*	Page	*	*	
Dickinson		*	*	Poweshiek	*	*	
Emmet		*	*	Sac	*	*	
Floyd		*	*	Shelby	*	*	
Franklin		*	*	Tama	*	*	
Greene		*	*	Union	*	*	
Hamilton		*	*	Winnebago	*	*	
Hancock		*	*	Wright	*	*	
			<b>Total</b>	32	2.6		
Counties with Average Population > 20,000	Boone	*	*	Lee	5	6.3	
	Buchanan	*	*	Mahaska	*	*	
	Buena Vista	*	*	Marion	*	*	
	Carroll	*	*	Marshall	*	*	
	Cerro Gordo	*	*	Muscatine	*	*	
	Clinton	9	7.4	Plymouth	*	*	
	Des Moines	*	*	Sioux	5	5.3	
	Fayette	*	*	Wapello	*	*	
	Henry	*	*	Webster	*	*	
	Jackson	*	*	Winneshiek	*	*	
	Jasper	*	*	<b>Total</b>	57	3.5	
MSA Counties	Benton	*	*	Linn	19	3.4	
	Black Hawk	7	2.1	Madison	*	*	
	Bremer	*	*	Mills	*	*	
	Dallas	*	*	Polk	51	4.0	
	Dubuque	8	3.4	Pottawattamie	15	6.1	
	Grundy	*	*	Scott	16	3.5	
	Guthrie	*	*	Story	*	*	
	Harrison	*	*	Warren	*	*	
	Johnson	9	3.0	Washington	*	*	
	Jones	*	*	Woodbury	10	3.1	
			<b>Total</b>	156	3.4		
<b>State Total</b>	257	3.3					

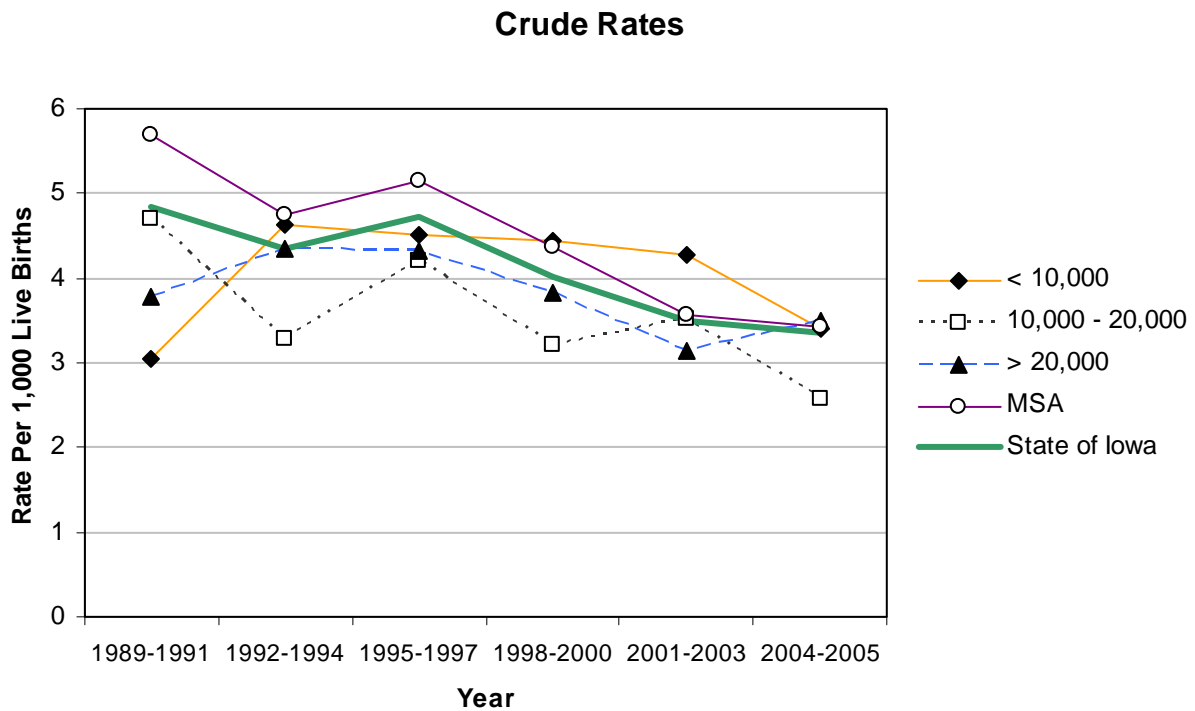
<sup>1</sup>Rates per 1,000 births

Source: Iowa Department of Public Health, Vital Statistics, Birth Certificates

## Fetal Deaths by County Group 1989-2005



## Neonatal Deaths by County Group 1989-2005



## Perinatal Deaths 2004-2005

	County	#	Crude <sup>1</sup>	County	#	Crude <sup>1</sup>	
Counties with Average Population < 10,000	Adair	*	*	Monona	*	*	
	Adams	*	*	Monroe	*	*	
	Audubon	*	*	Osceola	*	*	
	Clarke	*	*	Palo Alto	*	*	
	Davis	*	*	Pocahontas	*	*	
	Decatur	*	*	Ringgold	*	*	
	Fremont	*	*	Taylor	*	*	
	Howard	*	*	Van Buren	*	*	
	Ida	*	*	Wayne	5	31.8	
	Lucas	*	*	Worth	*	*	
				<b>Total</b>	30	8.5	
	Counties with Average Population 10,000 – 20,000	Allamakee	*	*	Hardin	6	14.7
		Appanoose	*	*	Humboldt	*	*
Butler		*	*	Iowa	9	23.1	
Calhoun		*	*	Jefferson	*	*	
Cass		*	*	Keokuk	*	*	
Cedar		*	*	Kossuth	*	*	
Cherokee		*	*	Louisa	*	*	
Chickasaw		*	*	Lyon	*	*	
Clay		*	*	Mitchell	*	*	
Clayton		*	*	Montgomery	*	*	
Crawford		*	*	O'Brien	*	*	
Delaware		*	*	Page	*	*	
Dickinson		*	*	Poweshiek	*	*	
Emmet		*	*	Sac	*	*	
Floyd		*	*	Shelby	*	*	
Franklin		*	*	Tama	*	*	
Greene		*	*	Union	*	*	
Hamilton		*	*	Winnebago	*	*	
Hancock		*	*	Wright	*	*	
			<b>Total</b>	90	7.3		
Counties with Average Population > 20,000	Boone	6	10.1	Lee	10	12.6	
	Buchanan	11	18.7	Mahaska	5	8.7	
	Buena Vista	7	12.5	Marion	9	10.9	
	Carroll	*	*	Marshall	10	8.0	
	Cerro Gordo	7	7.2	Muscatine	8	6.8	
	Clinton	15	12.3	Plymouth	*	*	
	Des Moines	9	8.8	Sioux	6	6.4	
	Fayette	*	*	Wapello	9	9.2	
	Henry	*	*	Webster	*	*	
	Jackson	*	*	Winneshiek	*	*	
	Jasper	8	8.9	<b>Total</b>	142	8.7	
	MSA Counties	Benton	5	8.3	Linn	55	9.9
		Black Hawk	26	7.7	Madison	6	15.6
Bremer		*	*	Mills	*	*	
Dallas		10	6.9	Polk	123	9.5	
Dubuque		23	9.9	Pottawattamie	25	10.2	
Grundy		*	*	Scott	49	10.6	
Guthrie		6	25.8	Story	16	8.7	
Harrison		*	*	Warren	*	*	
Johnson		21	7.0	Washington	6	10.8	
Jones		5	11.2	Woodbury	23	7.2	
				<b>Total</b>	412	9.1	
<b>State Total</b>	674	8.7					

<sup>1</sup>Rates per 1,000 births

Source: Iowa Department of Public Health, Vital Statistics, Birth Certificates

## Infant Deaths 2004-2005

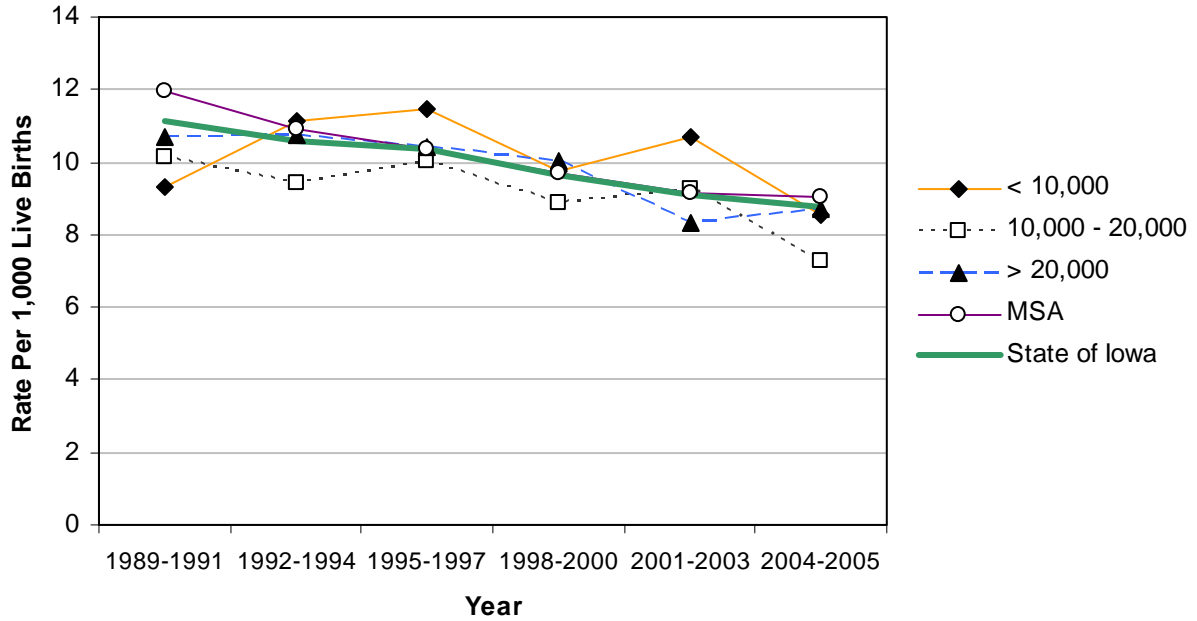
	County	#	Crude <sup>1</sup>	County	#	Crude <sup>1</sup>	
Counties with Average Population < 10,000	Adair	*	*	Monona	*	*	
	Adams	*	*	Monroe	*	*	
	Audubon	*	*	Osceola	*	*	
	Clarke	*	*	Palo Alto	*	*	
	Davis	*	*	Pocahontas	*	*	
	Decatur	*	*	Ringgold	*	*	
	Fremont	*	*	Taylor	*	*	
	Howard	*	*	Van Buren	*	*	
	Ida	*	*	Wayne	*	*	
	Lucas	*	*	Worth	*	*	
				<b>Total</b>	15	4.3	
	Counties with Average Population 10,000 – 20,000	Allamakee	*	*	Hardin	*	*
		Appanoose	*	*	Humboldt	*	*
Butler		*	*	Iowa	*	*	
Calhoun		*	*	Jefferson	*	*	
Cass		*	*	Keokuk	*	*	
Cedar		*	*	Kossuth	*	*	
Cherokee		*	*	Louisa	*	*	
Chickasaw		*	*	Lyon	*	*	
Clay		*	*	Mitchell	*	*	
Clayton		*	*	Montgomery	*	*	
Crawford		*	*	O'Brien	*	*	
Delaware		*	*	Page	*	*	
Dickinson		*	*	Poweshiek	*	*	
Emmet		*	*	Sac	*	*	
Floyd		*	*	Shelby	*	*	
Franklin		*	*	Tama	*	*	
Greene		*	*	Union	*	*	
Hamilton		*	*	Winnebago	*	*	
Hancock		*	*	Wright	5	14.2	
			<b>Total</b>	45	3.6		
Counties with Average Population > 20,000	Boone	*	*	Lee	6	7.6	
	Buchanan	5	8.5	Mahaska	*	*	
	Buena Vista	*	*	Marion	*	*	
	Carroll	*	*	Marshall	5	4.0	
	Cerro Gordo	*	*	Muscatine	*	*	
	Clinton	11	9.0	Plymouth	8	12.6	
	Des Moines	*	*	Sioux	5	5.3	
	Fayette	*	*	Wapello	6	6.1	
	Henry	*	*	Webster	7	7.3	
	Jackson	*	*	Winneshiek	*	*	
	Jasper	6	6.7	<b>Total</b>	95	5.8	
	MSA Counties	Benton	5	8.3	Linn	31	5.6
Black Hawk		12	3.5	Madison	*	*	
Bremer		*	*	Mills	*	*	
Dallas		5	3.4	Polk	79	6.1	
Dubuque		11	4.7	Pottawattamie	20	8.2	
Grundy		*	*	Scott	30	6.5	
Guthrie		*	*	Story	10	5.4	
Harrison		*	*	Warren	*	*	
Johnson		11	3.6	Washington	*	*	
Jones		*	*	Woodbury	15	4.7	
				<b>Total</b>	248	5.5	
<b>State Total</b>	403	5.2					

<sup>1</sup>Rates per 1,000 births

Source: Iowa Department of Public Health, Vital Statistics, Birth Certificates

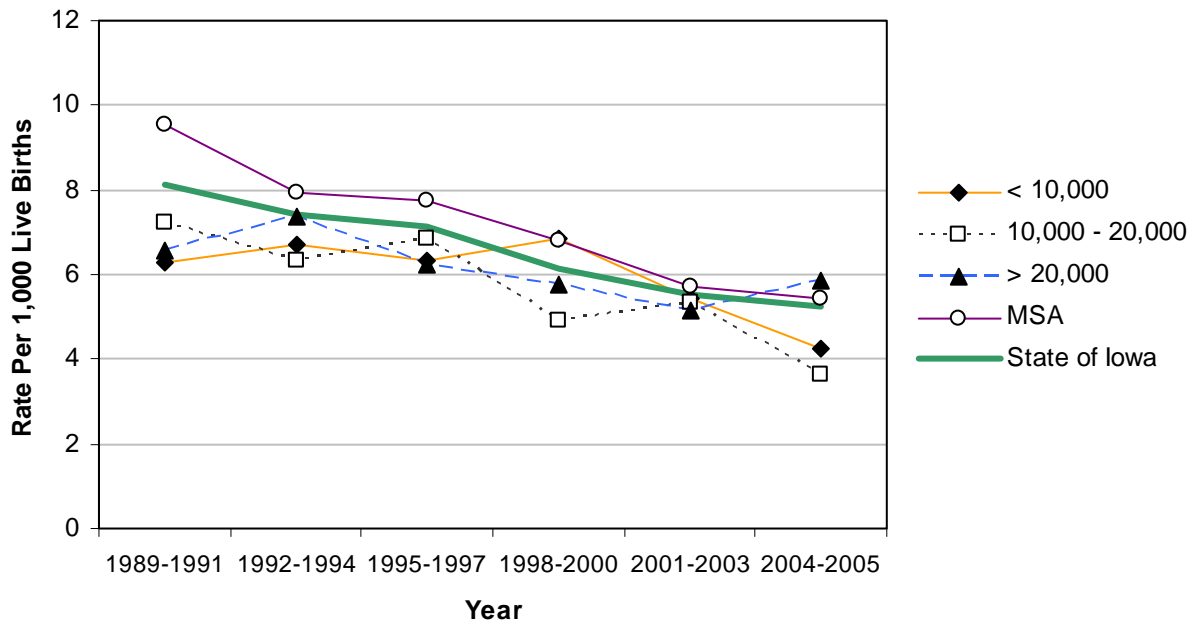
## Perinatal Deaths by County Group 1989-2005

Crude Rates



## Infant Deaths by County Group 1989-2005

Crude Rates



## Birth Defects 2002-2004

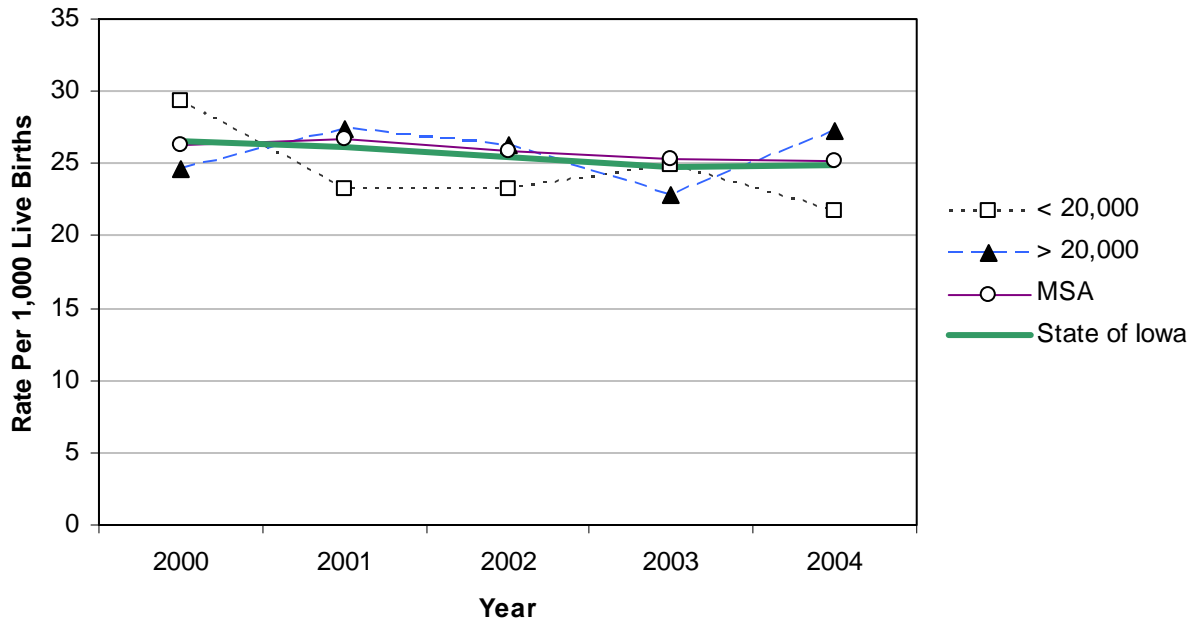
	County	#	Crude <sup>1</sup>	County	#	Crude <sup>1</sup>	
Counties with Average Population < 10,000	Adair	*	*	Monona	5	16.5	
	Adams	6	47.2	Monroe	*	*	
	Audubon	*	*	Osceola	*	*	
	Clarke	8	21.7	Palo Alto	5	15.2	
	Davis	6	16.6	Pocahontas	5	23.0	
	Decatur	*	*	Ringgold	6	34.5	
	Fremont	*	*	Taylor	*	*	
	Howard	5	15.2	Van Buren	8	31.1	
	Ida	7	28.2	Wayne	6	25.2	
	Lucas	7	23.6	Worth	*	*	
				<b>Total</b>	<b>97</b>	<b>19.1</b>	
	Counties with Average Population 10,000 – 20,000	Allamakee	10	17.8	Hardin	14	23.2
		Appanoose	18	37.4	Humboldt	5	14.0
Butler		17	34.3	Iowa	21	37.1	
Calhoun		8	26.7	Jefferson	12	26.8	
Cass		11	24.5	Keokuk	5	12.4	
Cedar		21	35.4	Kossuth	14	27.8	
Cherokee		7	20.4	Louisa	21	41.7	
Chickasaw		14	33.7	Lyon	*	*	
Clay		20	32.2	Mitchell	*	*	
Clayton		12	20.1	Montgomery	9	23.7	
Crawford		15	21.4	O'Brien	6	12.0	
Delaware		16	25.9	Page	12	23.8	
Dickinson		*	*	Poweshiek	16	28.1	
Emmet		*	*	Sac	6	18.5	
Floyd		17	30.7	Shelby	11	27.8	
Franklin		8	21.4	Tama	16	23.0	
Greene		13	42.8	Union	10	23.5	
Hamilton		12	21.4	Winnebago	13	40.2	
Hancock		11	32.8	Wright	11	20.8	
				<b>Total</b>	<b>443</b>	<b>24.5</b>	
Counties with Average Population > 20,000	Boone	30	33.4	Lee	31	26.2	
	Buchanan	23	25.8	Mahaska	27	33.8	
	Buena Vista	23	29.7	Marion	39	32.2	
	Carroll	17	22.2	Marshall	43	24.5	
	Cerro Gordo	48	32.1	Muscatine	40	21.8	
	Clinton	46	26.7	Plymouth	19	20.4	
	Des Moines	39	25.7	Sioux	16	11.6	
	Fayette	15	23.0	Wapello	44	31.2	
	Henry	16	23.2	Webster	29	20.2	
	Jackson	17	27.2	Winneshiek	7	12.5	
	Jasper	39	29.6	<b>Total</b>	<b>608</b>	<b>25.5</b>	
MSA Counties	Benton	21	22.1	Linn	216	26.1	
	Black Hawk	165	33.9	Madison	15	25.1	
	Bremer	19	26.1	Mills	9	17.5	
	Dallas	50	27.0	Polk	479	25.4	
	Dubuque	93	25.9	Pottawattamie	87	23.8	
	Grundy	10	28.1	Scott	176	25.9	
	Guthrie	7	17.3	Story	49	17.9	
	Harrison	11	22.8	Warren	40	26.8	
	Johnson	107	23.7	Washington	19	20.8	
	Jones	17	26.3	Woodbury	116	23.9	
				<b>Total</b>	<b>1,706</b>	<b>25.4</b>	
<b>State Total</b>	<b>2,854</b>	<b>25.0</b>					

<sup>1</sup>Rates per 1,000 live births

Source: Iowa Department of Public Health, Vital Statistics, Birth Certificates

## Birth Defects by County Group 2000-2004<sup>1</sup>

### Crude Rates



<sup>1</sup> < 10,000 and 10,000-20,000 combined due to substantial year to year variation

## Selected Birth Defects in Iowa 2002-2004

Defect Name	Defects	Crude Rate <sup>1</sup>
Anencephalus	37	0.32
Spina bifida without anencephalus	54	0.47
Hydrocephalus without spina bifida	103	0.90
Encephalocele	9	0.08
Microcephalus	101	0.89
Anophthalmia/microthemia	31	0.27
Congenital cataract	27	0.24
Anotia/microtia	25	0.22
Common truncus	11	0.10
Transposition of great arteries	62	0.54
Tetralogy of Fallot	39	0.34
Ventricular septal defect	537	4.71
Atrial septal defect	333	2.92
Endocardial cushion defect	76	0.67
Pulmonary valve atresia and stenosis	114	1.00
Tricuspid valve atresia and stenosis	11	0.10
Ebsteins's anomaly	15	0.13
Aortic valve stenosis	48	0.42
Hypoplastic left heart syndrome	29	0.25
Patent ductus arteriosus	301	2.64
Coarctation of aorta	52	0.46
Cleft palate without cleft lip	99	0.87
Cleft lip with and without cleft palate	156	1.37
Choanal atresia	27	0.24
Esophageal atresia/tracheoesophageal fistula	30	0.26
Rectal and large intestinal atresia/stenosis	60	0.53
Pyloric stenosis	354	3.10
Hirschsprung's disease (congenital megacolon)	24	0.21
Biliary atresia	7	0.06
Renal agenesis/hypoplasia	82	0.72
Bladder exstrophy	10	0.09
Obstructive genitourinary defect	313	2.74
Hypospadias and epispadias	256	2.24
Reduction deformity, upper limbs	55	0.48
Reduction deformity, lower limbs	26	0.23
Gastroschisis	64	0.56
Omphalocele	30	0.26
Congenital hip dislocation	99	0.87
Diaphragmatic hernia	11	0.10
Trisomy 13	11	0.10
Down syndrome	183	1.60
Trisomy 18	30	0.26
Amniotic bands	12	0.11

<sup>1</sup>Rates per 1,000 live births

Source: Iowa Birth Defects Registry, The University of Iowa

[This page has been intentionally left blank.]