

## Health Behaviors

The health of individuals and their communities is determined by a variety of factors including biologic, environmental, social, and behavioral influences. This section provides an overview of selected surveys and statistics collected in Iowa to track the effects of these various influences on the health of Iowans. Introductions are provided individually for each of the surveys with links to more detailed information on survey methodology and additional data where available. Information on marriages and dissolutions is included at the end of this section because it characterizes and contrasts the population dynamics that can affect health.

### QUESTIONS TO CONSIDER WHEN USING SURVEY RESULTS...

- ✓ What was the method used to conduct the survey, i.e., telephone, mail, personal interview?
- ✓ What was the response rate of those surveyed and what factors might influence who responds and who doesn't?
- ✓ Are the survey respondents representative of and thus generalizable to a particular population?
- ✓ Because a survey provides only estimates based on the sampled population, what are the variability measures of these estimates?
- ✓ Were the survey questions cross-sectional in that they represent attitudes, behaviors, or disease status of different people, or were the same people surveyed repeatedly over time?

## Behavioral Risk Factor Surveillance System (BRFSS)

The Behavioral Risk Factor Surveillance System (BRFSS) survey is an ongoing telephone survey that is conducted each year in every state, including Iowa, as well as in the District of Columbia, and in Puerto Rico. It is financially and technically supported by the Centers for Disease Control and Prevention (CDC) and is a scientifically-designed and validated method of collecting information.

The Iowa BRFSS collects health risk behavior information from over 5,000 household telephone surveys in both English and Spanish, and is designed to collect information on nationally agreed upon topics and on additional areas of special interest to Iowa. Because the BRFSS is conducted annually, the prevalence of these behaviors may be followed longitudinally. The risk behaviors of those surveyed (Iowa residents age 18 and over) are major contributions to illness, disability, and premature death.

The goal of the Iowa BRFSS is to provide data to initiate and guide health promotion disease prevention programs. The BRFSS program achieves this goal by:

1. determining state specific prevalence of personal health behaviors related to the leading cause of premature death;
2. developing the capacity of the state health department to conduct credible telephone surveys; and
3. advancing the understanding that health-related behaviors are critical indices of health.

The BRFSS results can help inform health professionals as to health behaviors and beliefs of the general population, and can be used as a measure of the effectiveness of various public health strategies.

### BRFSS KEY AREAS...

- ✓ Health Status
- ✓ Health Care Coverage
- ✓ Physical Inactivity
- ✓ Body Weight
- ✓ Smoking
- ✓ Alcohol Consumption
- ✓ Hypertension
- ✓ Cholesterol Awareness
- ✓ Colorectal Cancer Screening
- ✓ Diabetes
- ✓ Adult Immunizations
- ✓ Injury Control
- ✓ Women's Health

## Iowa Behavioral Risk Factor Surveillance System 2007-2008

	Definition	Iowa		US Median <sup>1</sup>	
		2007 % (%,%) <sup>2</sup>	2008 % (%,%)	2007 %	2008 %
<b>Binge drinking</b>	Men having five or more or women having four or more alcoholic beverages on one or more occasions in the past month.	19.9 (18.5, 21.3)	20.2 (18.6, 21.8)	15.7	15.5
<b>Chronic drinking</b>	Men having an average of greater than two drinks per day or women having an average of greater than one drink per day.	5.5 (4.7, 6.3)	5.4 (4.6, 6.2)	5.2	5.1
<b>Current smoker</b>	All respondents smoking 100 cigarettes in their lifetime and currently smoking every day or some days.	19.8 (18.4, 21.2)	18.8 (17.4, 20.2)	19.7	18.2
<b>Diabetes</b>	All respondents ever being diagnosed with diabetes, excluding gestational diabetes.	6.8 (6.2, 7.4)	7.0 (6.4, 7.6)	8.1	8.2
<b>High blood pressure</b>	All respondents being told by a health professional that they had high blood pressure.	26.8 (25.4, 28.2)	**	27.5	**
<b>Cholesterol</b>	All respondents having their cholesterol checked in the past five years.	72.7 (70.9, 74.5)	**	74.9	**
<b>High cholesterol</b>	All respondents being told by a health professional that they had high cholesterol.	37.8 (36.2, 39.4)	**	37.5	**
<b>No insurance coverage</b>	All respondents who currently did not have any kind of health care coverage.	10.5 (9.1, 11.9)	9.0 (7.8, 10.2)	14.5	14.5
<b>Mammogram</b>	Female respondents age 40 and older having a mammogram in the past two years.	**	76.5 (74.7, 78.3)	**	76.0
<b>Pap smear</b>	Female respondents with a uterine cervix having a pap smear in the past three years.	**	84.0 (82.0, 86.0)	**	82.7
<b>Obesity</b>	All respondents who had a calculated body mass index (BMI) of 30.0 or above.	27.7 (26.1, 29.3)	26.7 (25.1, 28.3)	26.3	26.6
<b>Overweight</b>	All respondents who had a calculated body mass index (BMI) from 25.0 to 29.9, inclusive.	37.0 (35.4, 38.6)	37.6 (36.0, 39.2)	36.7	36.5
<b>Sigmoidoscopy / Colonoscopy</b>	Respondents age 50 and over who ever had a sigmoidoscopy or colonoscopy.	62.6 (60.2, 64.2)	63.8 (62.0, 65.6)	**	61.8
<b>Tested for HIV</b>	Respondents age 18 to 64 who have ever had a HIV test, excluding for blood donations.	28.5 (26.7, 30.3)	29.2 (27.4, 31.0)	38.0	36.7
<b>Asthma</b>	All respondents who currently have asthma.	6.6 (5.8, 7.4)	7.2 (6.3, 8.1)	8.3	8.7
<b>Health Status</b>	All respondents who rate their current health as good, very good, or excellent.	87.6 (86.6, 88.6)	87.5 (86.5, 88.5)	85.1	84.9

\*This question was not asked in all states in the given year

<sup>1</sup>In the U.S. half of the 50 states fall above this point and half fall below

<sup>2</sup>95% confidence interval

Source: BRFSS, Centers for Disease Control and Prevention and the Iowa Department of Public Health

## Iowa Youth Survey

The 2008 Iowa Youth survey was a joint project among the Iowa Department of Public Health: Division of Health Promotion, Prevention and Addictive Behaviors; Iowa Department of Human Rights Division of Criminal & Juvenile Justice Planning; Iowa Governor's Office of Drug Control Policy and Iowa Department of Education.

**Survey scope.** The 2008 IYS is the 12<sup>th</sup> in a series of youth surveys that have been completed every three years since 1975. The 1999, 2002, 2005, and 2008 surveys differ from previous years in both the procedures used to implement the survey and the students who were asked to participate. Previous surveys were given to approximately one-third of Iowa's public school districts and a sample of their 6<sup>th</sup>, 8<sup>th</sup>, 10<sup>th</sup> and 12<sup>th</sup> grade students. Starting with the 1999 IYS, participation was sought from all public school districts and all students in grades 6, 8 and 11, as well as 14-18 year-old students in alternative programs. These changes make it possible to provide youth development-related data for each participating school, as well as for each county in which participating students reside. They also make it more feasible to use IYS results to assess the outcome of community and school youth development programs. The changes do, however, restrict direct comparisons with surveys prior to 1999 to grades 6 and 8, and to the schools that participated in those surveys.

Starting with the 2002 IYS, participation was also sought from all non-public schools in the state, in addition to all of the public school districts. It was believed that by including all Iowa students in the 6<sup>th</sup>, 8<sup>th</sup> and 11<sup>th</sup> grades, the survey results would more accurately reflect the attitudes and perceptions of all Iowa students in those grades, not just those attending public schools. These non-public school data have been included in this report.

Survey questionnaires were completed in 347 of Iowa's 362 public school districts (95.9%) and in a minimum of 48 of 184 private schools (26.1%) with some combination of students enrolled in the 6<sup>th</sup>, 8<sup>th</sup> and/or 11<sup>th</sup> grades. A total of 97,741 public and private school

Grade	Number Enrolled	Number Completed IYS	Percent Completed IYS
6	37,643	32,264	85.7
8	37,807	32,673	86.4
11	39,603	31,130	78.6

---

students across the state completed the IYS, with each county represented by at least 200 students.

**Survey content.** The 2008 IYS questionnaire includes questions about the students' behaviors and attitudes/beliefs, as well as their perceptions of their peer, family, school and neighborhood/community environments. Prior research has shown that each of these environments plays a significant role in positive youth development. Selection of specific survey questions was based on a combination of: 1) analysis of data collected in previous Iowa Youth Surveys; 2) a literature review of the established youth development models, especially those that enjoy some acceptance in Iowa; and 3) discussion sessions with youth development professionals (community service providers, school district personnel and academicians).

The general content of the questions included in the 2008 IYS is similar to that of previous surveys. Most of the items are relevant to the constructs on which previous IYS were based. Questions and responses from the 2005 IYS were utilized without modification, and several new questions added. Among the new additions were questions eliciting additional, more detailed information on gambling, nutrition, and exercise, as well as information regarding parental involvement in the military, students receiving accommodation under Section 504, students with Individualized Education Plans, and students receiving special education services.

The appropriateness of any comparison between the 2008 IYS to surveys from previous years must be considered on a question-by-question basis. Trend analyses for the most part should be considered exploratory at best. If comparisons are made, the 2005 and 2008 reports may make the state *appear* to be significantly different, for better or worse, from the reports generated by previous surveys. This appearance may be due to differences in question wording between the 2005/2008 reports and all previous reports and the representativeness of the samples rather than to actual changes in Iowa's youth.

## Iowa Youth Survey (IYS) 2008

Substance Use Behaviors	Definition	% <sup>1</sup>	% <sup>1</sup>	% <sup>1</sup>	% <sup>2</sup>
		6 <sup>th</sup> grade	8 <sup>th</sup> grade	11 <sup>th</sup> grade	State
Tobacco	Percentage of students who reported smoking cigarettes during the past 30 days.	1	5	19	10
	Percentage of students who reported smoking cigars during the past 30 days.	0	1	11	4
	Percentage of students who reported using smokeless tobacco during the past 30 days.	1	4	16	6
Alcohol	Percentage of students who reported having 1 or more alcoholic drinks during the past 30 days.	5	15	37	19
	Percentage of students who reported having 5 or more alcoholic drinks in a row, within a couple of hours, during the past 30 days.	1	9	27	14
Marijuana	Percentage of students who reported using marijuana during the past 30 days.	0	4	12	6
Inhalants	Percentage of students who reported sniffing glue, breathing the contents of gases or sprays in order to get high during the past 30 days.	2	3	2	2
Methamphetamines	Percentage of students who reported using methamphetamines during the past 30 days.	0	0	1	0
Cocaine	Percentage of students who reported using cocaine during the past 30 days.	0	0	2	0
Amphetamines	Percentage of students who reported using amphetamines (other than methamphetamines) during the past 30 days.	0	0	2	1
Steroid Pills/Shots	Percentage of students who reported taking steroid pills or shots without a doctor's prescription during the past 30 days.	0	1	2	1
Other Illegal Drugs	Percentage of students who reported using any other illegal drug during the past 30 days.	0	1	4	1
Prescription Medications	Percent of students who reported using prescription medications that were not prescribed for them.	2	4	7	5

%<sup>1</sup> Unweighted Percentage%<sup>2</sup> Weighted Percentage

Source: Iowa Dept. of Public Health, Div. of Behavioral Health

## Iowa Youth Survey 2008 (continued)

	Definition		% <sup>1</sup>	% <sup>1</sup>	% <sup>1</sup>	% <sup>2</sup>
			6 <sup>th</sup> grade	8 <sup>th</sup> grade	11 <sup>th</sup> grade	State
<b>Attitudes about self</b>	I am accepting of those different than me (racially, culturally, socio-economically).	Strongly Agree	63	58	55	59
		Agree	32	37	39	36
		Disagree	4	4	3	4
		Strongly Disagree	2	1	2	2
	I can say "no" when someone wants me to do things I know are wrong or dangerous.	Strongly Agree	76	64	56	65
		Agree	19	29	36	28
		Disagree	3	5	6	4
Strongly Disagree		2	2	2	2	
Violence is the worst way to solve problems	Strongly Agree	61	41	34	45	
	Agree	26	35	39	33	
	Disagree	8	16	21	15	
	Strongly Disagree	6	7	6	6	
It is against my values to have sex as a teenager	Strongly Agree	69	47	19	44	
	Agree	17	27	21	22	
	Disagree	8	17	37	21	
	Strongly Disagree	6	9	24	13	
It is against my values to use alcohol and drugs as a teenager.	Strongly Agree	81	62	30	57	
	Agree	12	23	27	21	
	Disagree	3	11	31	16	
	Strongly Disagree	4	5	12	7	
Have you ever tried to kill yourself?	Percentage	6	10	13	10	
<b>Attitudes about alcohol</b>						
Thinking of your best friends, how wrong would most of them feel it would be for you to go to a party where kids under 21 were using alcohol?	Very Wrong	80	55	22	52	
	Wrong	11	20	16	16	
	A Little Wrong	4	12	22	13	
	Not Wrong at All	2	9	37	17	
	Don't Know	3	3	3	3	
How wrong would your parents/guardians feel it would be for you to go to a party where kids under 21 were using alcohol?	Very Wrong	93	86	68	82	
	Wrong	4	8	17	10	
	A Little Wrong	1	3	10	5	
	Not Wrong at All	1	2	4	2	
	Don't Know	1	1	1	1	
Would you be more or less likely to be popular (respected or cool) with the other students in your school if you drank alcoholic beverages?	A Lot More Popular	4	5	9	6	
	More Popular	4	10	25	14	
	Less Popular	14	20	10	15	
	A Lot Less Popular	53	36	8	32	
	Wouldn't Change My Popularity	25	29	48	34	
<b>Attitudes about school</b>						
There are clear rules about what students can and cannot do.	Strongly Agree	63	45	34	47	
	Agree	31	44	54	43	
	Disagree	4	8	10	7	
	Strongly Disagree	2	3	3	2	

%<sup>1</sup> Unweighted Percentage  
 %<sup>2</sup> Weighted Percentage

Source: Iowa Dept. of Public Health, Div. of Behavioral Health

## Iowa Youth Survey 2008 (continued)

Definition		% <sup>1</sup>	% <sup>1</sup>	% <sup>1</sup>	% <sup>2</sup>		
		6 <sup>th</sup> grade	8 <sup>th</sup> grade	11 <sup>th</sup> grade	State		
<b>Attitudes about school (continued)</b>	Students caught drinking, smoking, or using an illegal drug are not allowed to participate in any extracurricular activity for some time period.	Strongly Agree	81	67	51	66	
		Agree	13	24	37	25	
		Disagree	3	5	7	5	
		Strongly Disagree	3	4	4	4	
		Strongly Agree	68	54	44	55	
		Agree	22	35	44	34	
<b>Attitudes about family</b>	If I skipped school at least one of my parents/guardians would be notified.	Disagree	5	7	9	7	
		Strongly Disagree	4	3	3	4	
		Students in my school treat each other with respect.	Strongly Agree	28	14	9	17
			Agree	42	39	41	41
			Disagree	23	33	37	31
			Strongly Disagree	8	14	13	12
I feel safe at school.	Strongly Agree	50	31	22	34		
	Agree	38	50	60	50		
	Disagree	8	13	13	11		
	Strongly Disagree	4	6	5	5		
<b>Attitudes about community</b>	There is at least one adult at school who I could go to for help with a problem.	Strongly Agree	68	50	41	53	
		Agree	25	35	45	35	
		Disagree	4	9	10	8	
		Strongly Disagree	3	6	5	5	
		In my home there are clear rules about what I can and cannot do.	Strongly Agree	65	52	42	53
			Agree	29	39	45	38
Disagree	4		7	10	7		
Strongly Disagree	1		2	3	2		
I have a happy home.	Strongly Agree		61	48	41	50	
	Agree	30	38	44	37		
	Disagree	6	10	11	9		
	Strongly Disagree	3	4	4	4		
There are people living in my home who have a serious alcohol or drug problem.	Strongly Agree	11	8	6	8		
	Agree	8	8	9	8		
	Disagree	17	20	22	20		
	Strongly Disagree	65	63	63	64		
	I can get help and support when I need it from someone in my home.	Strongly Agree	72	57	46	58	
Agree		21	31	40	31		
Disagree		3	7	9	7		
Strongly Disagree		3	5	5	4		
A parent/guardian knows where I am and who I am with, especially in the evening and on weekends.		Never	5	5	4	5	
	Sometimes	9	15	22	15		
	Often	18	26	34	26		
	Always	68	54	40	54		
<b>Attitudes about community</b>	My neighborhood is a safe place to live.	Strongly Agree	57	46	42	48	
		Agree	34	44	50	43	
		Disagree	7	7	6	7	
		Strongly Disagree	3	3	2	3	
		Strongly Disagree					
		Disagree					

%<sup>1</sup> Unweighted Percentage  
 %<sup>2</sup> Weighted Percentage

Source: Iowa Dept. of Public Health, Div. of Behavioral Health

## Iowa Youth Survey 2008 (continued)

Attitudes about community (continued)	Definition		% <sup>1</sup>	% <sup>1</sup>	% <sup>1</sup>	% <sup>2</sup>
			6 <sup>th</sup> grade	8 <sup>th</sup> grade	11 <sup>th</sup> grade	State
Adults in my neighborhood or community help me when I need help.	Strongly Agree		46	26	12	27
	Agree		36	45	48	43
	Disagree		12	21	28	21
	Strongly Disagree		5	8	11	8
In your neighborhood or community how difficult do you think it would be for a kid your age to get...						
...cigarettes	Very hard		51	28	10	29
	Hard		20	26	14	20
	Easy		9	23	35	23
	Very Easy		5	12	34	17
	Don't know		15	11	7	11
...alcoholic beverages (beer, wine, liquor).	Very hard		48	24	8	26
	Hard		20	23	13	19
	Easy		12	27	38	26
	Very Easy		5	16	35	19
	Don't know		14	10	6	10
...marijuana (pot, grass, hash, bud, weed).	Very hard		67	47	18	43
	Hard		11	21	20	17
	Easy		4	12	30	15
	Very Easy		3	7	21	11
	Don't know		15	13	12	13
...methamphetamines (crack, ice).	Very hard		67	54	33	51
	Hard		11	20	28	20
	Easy		3	7	13	8
	Very Easy		2	4	7	5
	Don't know		17	15	20	17
...amphetamines other than methamphetamines (like stimulants, uppers, speed).	Very hard		67	53	33	50
	Hard		11	20	27	19
	Easy		3	7	14	8
	Very Easy		2	4	7	5
	Don't know		17	16	20	17
... any other illegal drug (cocaine, etc.).	Very hard		67	53	32	50
	Hard		11	19	26	19
	Easy		4	8	15	9
	Very Easy		3	5	8	5
	Don't know		15	14	19	16
...a handgun.	Very hard		56	41	30	42
	Hard		17	25	27	23
	Easy		7	13	16	12
	Very Easy		5	7	9	7
	Don't know		15	13	18	16

%<sup>1</sup> Unweighted Percentage  
 %<sup>2</sup> Weighted Percentage

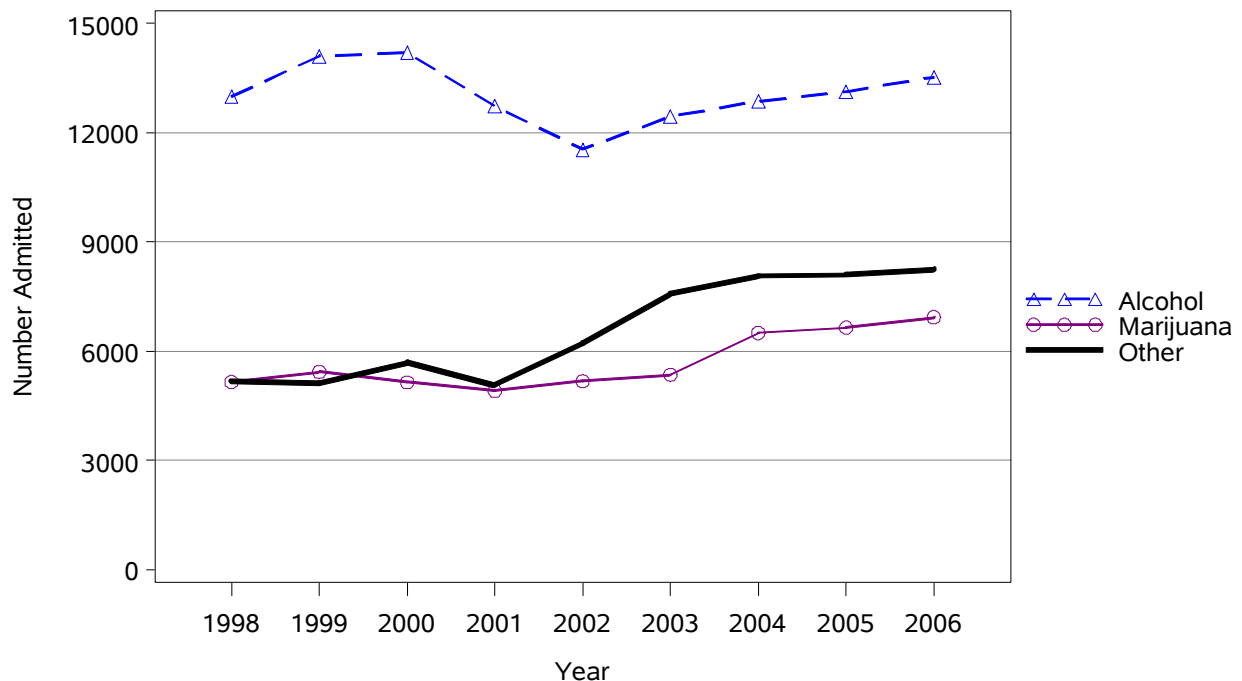
Source: Iowa Dept. of Public Health, Div. of Behavioral Health

## Substance Abuse Treatment

Substance abuse treatment is provided to residents of all 99 counties in Iowa through funding from the Federal Substance Abuse Prevention and Treatment Block Grant, state substance abuse appropriations, and Medicaid. Treatment may also be covered by specific insurance plans. The publically funded services are administered through the Iowa Plan for Behavioral Health, the state's managed care program for mental health and substance abuse services funded by and under the authority of the Iowa Department of Human Services and IDPH. The Iowa Plan contract is administered by Magellan Behavioral Care of Iowa. Through the federal block grant and associated state appropriations, treatment is available to Iowans based on sliding fee scale that considers income and family size.

The reporting period was for calendar years 1998-2006. The numbers reflect those identifying a county of residence in Iowa. Those identifying their residence outside of Iowa were not counted. The count is unduplicated with the following exceptions: a client was counted twice if the primary substance of abuse changed between admissions or if the client's age changed between admissions.

**State of Iowa Admissions Totals for Substance Abuse Treatment**

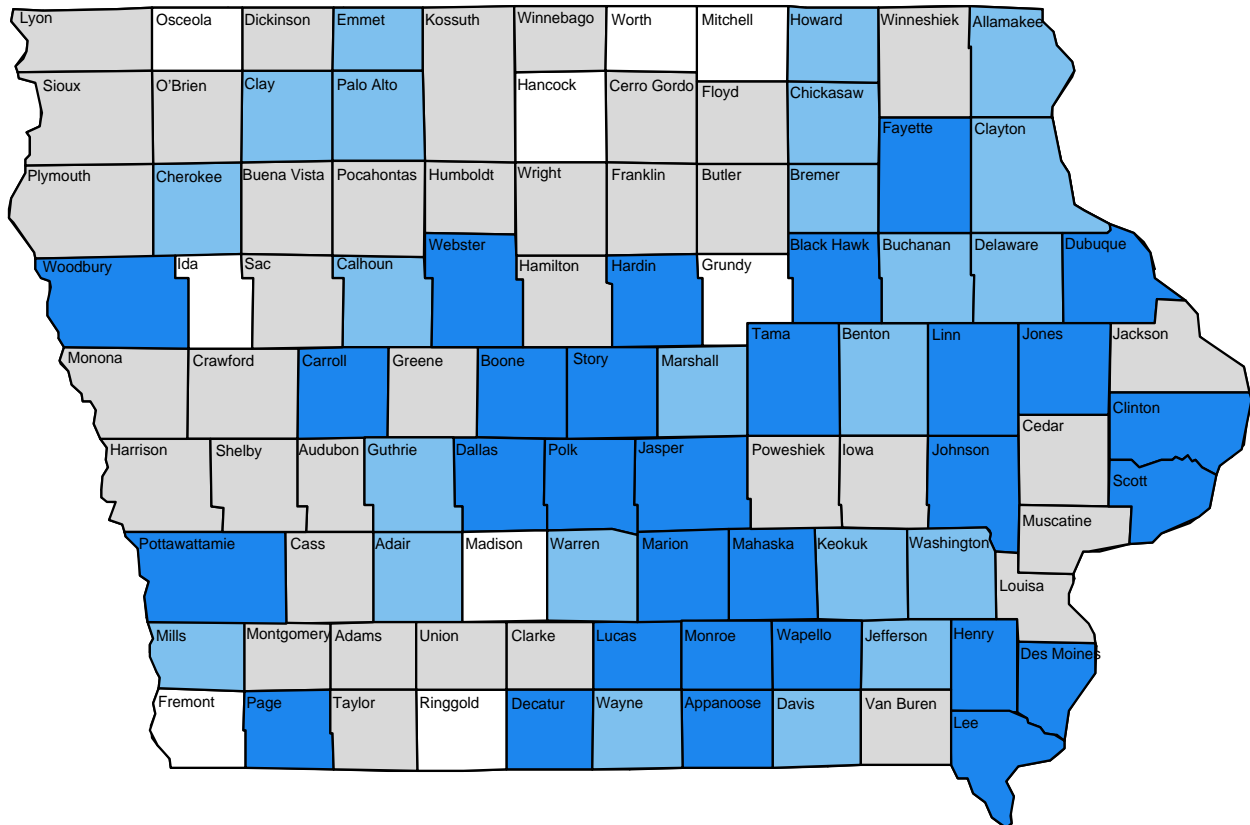


For more information, see [www.drugfreeinfo.org](http://www.drugfreeinfo.org) or call the Helpline at 1-866-242-4111.

## Local Sites for Substance Abuse Treatment

Adel	Corning	Guthrie Center	Mason City	Sergeant Bluff
Albia	Corydon	Hampton	Milford	Sheldon
Algona	Council Bluffs	Harlan	Mitchellville	Shenandoah
Ames	Cresco	Hull	Monroe	Sibley
Anamosa	Creston	Humboldt	Monticello	Sidney
Ankeny	Davenport	Ida Grove	Mt. Pleasant	Sigourney
Atlantic	Decorah	Independence	Muscatine	Sioux City
Audubon	Denison	Indianola	New Hampton	Spencer
Bedford	Des Moines	Iowa City	Newton	Storm Lake
Belle Plain	DeWitt	Iowa Falls	Oakdale	Tipton
Bettendorf	Dubuque	Jefferson	Oelwein	Toledo
Boone	Eagle Grove	Keokuk	Orange City	Vinton
Bloomfield	Eldora	Keosauqua	Orient	Wapello
Burlington	Elkader	Knoxville	Osceola	Washington
Carroll	Emmetsburg	Lamoni	Oskaloosa	Waterloo
Cedar Falls	Estherville	LeMars	Ottumwa	Waukon
Cedar Rapids	Fairfield	Lenox	Pella	Waverly
Centerville	Forest City	Logan	Perry	Webster City
Chariton	Fort Dodge	Manning	Pocahontas	West Burlington
Charles City	Ft. Madison	Manchester	Postville	West Union
Cherokee	Glenwood	Mapleton	Red Oak	Winterset
Clarinda	Greenfield	Maquoketa	Rock Rapids	Woodward
Clinton	Grinnell	Marengo	Rockwell City	
Coralville	Grundy Center	Marshalltown	Sac City	

Sites per County



□ 0      □ 1      □ 2      ■ 3 or more

Source: Iowa Department of Public Health, Div. of Promotion, Prevention, and Addictive Behaviors

## Marriages 2006-2007

	County	#	Crude <sup>1</sup> (Rank <sup>2</sup> )	County	#	Crude <sup>1</sup> (Rank <sup>2</sup> )	
Counties with Average Population < 10,000	Adair	89	5.8 (79)	Lucas	119	6.3 (62)	
	Adams	50	6.1 (70)	Monona	89	4.9 (96)	
	Audubon	65	5.3 (89)	Monroe	102	6.7 (43)	
	Clarke	115	6.4 (59)	Osceola	71	5.4 (87)	
	Davis	125	7.3 (22)	Palo Alto	121	6.4 (56)	
	Decatur	105	6.2 (65)	Pocahontas	82	5.3 (88)	
	Fremont	103	6.8 (39)	Ringgold	82	8.0 (06)	
	Greene	125	6.6 (50)	Taylor	88	6.8 (37)	
	Howard	132	6.9 (30)	Van Buren	116	7.6 (15)	
	Humboldt	114	5.9 (75)	Wayne	93	7.4 (20)	
	Ida	96	6.9 (31)	Worth	66	4.3 (98)	
				<b>Total</b>	2,148	6.3	
	Counties with Average Population 10,000 – 20,000	Allamakee	191	6.6 (48)	Hardin	225	6.4 (55)
		Appanoose	230	8.8 (04)	Iowa	195	6.1 (69)
Buena Vista		270	6.9 (32)	Jefferson	213	6.9 (34)	
Butler		164	5.6 (85)	Keokuk	122	5.7 (83)	
Calhoun		127	6.3 (61)	Kossuth	224	7.2 (25)	
Cass		214	7.7 (11)	Louisa	105	4.5 (97)	
Cedar		208	5.8 (80)	Lyon	118	5.2 (91)	
Cherokee		142	6.0 (72)	Mitchell	120	5.6 (86)	
Chickasaw		622	25.4 (01)	Montgomery	166	7.5 (16)	
Clay		213	6.4 (60)	O'Brien	171	6.1 (71)	
Clayton		281	7.9 (08)	Page	218	6.8 (36)	
Crawford		187	5.7 (84)	Poweshiek	242	6.5 (53)	
Delaware		239	6.8 (35)	Sac	150	7.2 (24)	
Dickinson		394	11.8 (02)	Shelby	155	6.3 (63)	
Emmet		129	6.2 (67)	Tama	227	6.4 (58)	
Floyd		188	5.8 (81)	Union	233	9.6 (03)	
Franklin		139	6.6 (47)	Winnebago	128	5.8 (77)	
Hamilton		200	6.4 (57)	Wright	103	3.9 (99)	
Hancock		144	6.3 (64)	<b>Total</b>	7,397	7.1	
Counties with Average Population > 20,000		Boone	400	7.6 (14)	Lee	577	8.1 (05)
	Buchanan	280	6.7 (42)	Mahaska	305	6.9 (33)	
	Carroll	313	7.5 (17)	Marion	518	7.9 (07)	
	Cerro Gordo	659	7.5 (18)	Marshall	599	7.7 (13)	
	Clinton	688	7.0 (28)	Muscatine	626	7.4 (19)	
	Des Moines	547	6.7 (41)	Plymouth	289	5.9 (74)	
	Fayette	218	5.3 (90)	Sioux	469	7.3 (23)	
	Henry	280	7.0 (29)	Wapello	555	7.8 (10)	
	Jackson	268	6.7 (44)	Webster	475	6.1 (68)	
	Jasper	418	5.7 (82)	Winneshiek	295	7.1 (26)	
			<b>Total</b>	8,779	7.0		
MSA Counties	Benton	262	4.9 (94)	Linn	2,534	6.2 (66)	
	Black Hawk	1,656	6.5 (52)	Madison	216	7.1 (27)	
	Bremer	314	6.6 (46)	Mills	154	5.1 (93)	
	Dallas	860	7.7 (12)	Polk	5,423	6.6 (51)	
	Dubuque	1,435	7.8 (09)	Pottawattamie	1,206	6.8 (40)	
	Grundy	120	4.9 (95)	Scott	2,207	6.8 (38)	
	Guthrie	145	6.6 (49)	Story	1,128	6.7 (45)	
	Harrison	200	6.5 (54)	Warren	648	7.4 (21)	
	Johnson	1,472	5.9 (73)	Washington	247	5.8 (78)	
	Jones	210	5.2 (92)	Woodbury	1,194	5.9 (76)	
			<b>Total</b>	21,631	6.5		
<b>State Total</b>		39,955	6.7				

<sup>1</sup>Rates per 1,000 population<sup>2</sup>Rank among 99 Iowa counties

Source: Iowa Department of Public Health, Vital Statistics

## Dissolutions 2006-2007

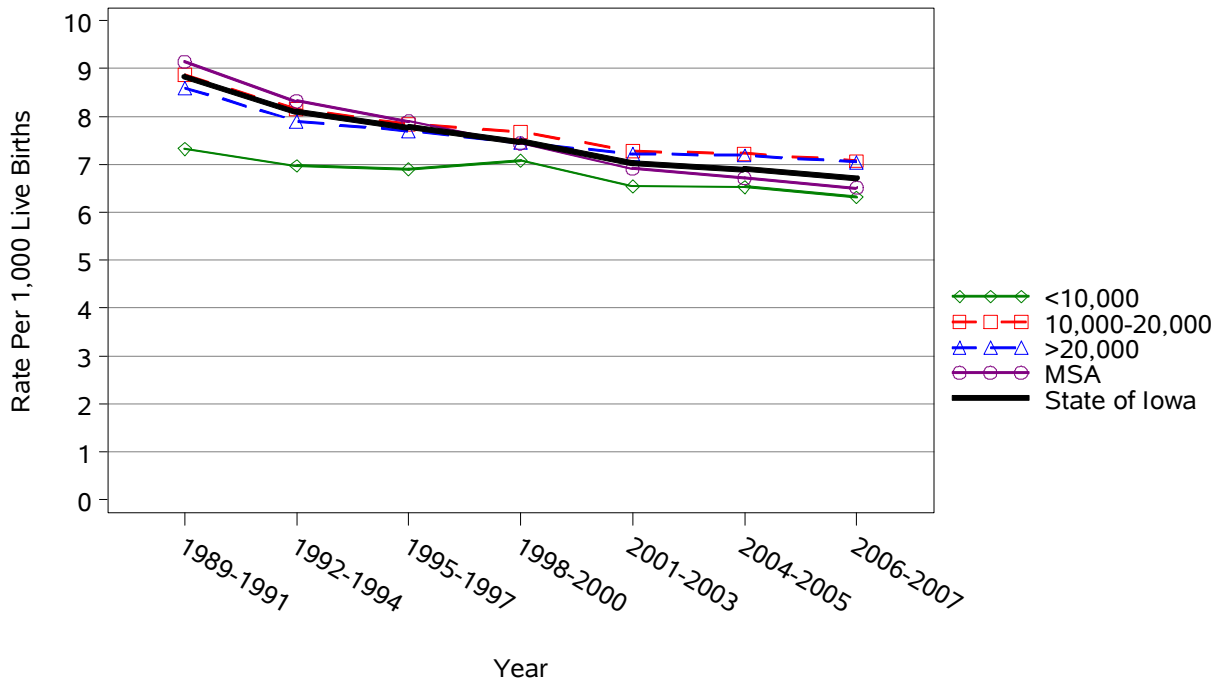
	County	#	Crude <sup>1</sup> (Rank <sup>2</sup> )	County	#	Crude <sup>1</sup> (Rank <sup>2</sup> )	
Counties with Average Population < 10,000	Adair	45	2.9 (38)	Lucas	59	3.1 (25)	
	Adams	22	2.7 (48)	Monona	52	2.8 (41)	
	Audubon	39	3.2 (21)	Monroe	47	3.1 (27)	
	Clarke	42	2.3 (72)	Osceola	30	2.3 (73)	
	Davis	53	3.1 (26)	Palo Alto	50	2.6 (49)	
	Decatur	49	2.9 (40)	Pocahontas	38	2.5 (62)	
	Fremont	49	3.2 (18)	Ringgold	27	2.6 (50)	
	Greene	52	2.7 (45)	Taylor	33	2.6 (57)	
	Howard	47	2.5 (63)	Van Buren	47	3.1 (29)	
	Humboldt	53	2.7 (44)	Wayne	31	2.5 (64)	
	Ida	50	3.6 (09)	Worth	24	1.6 (93)	
				<b>Total</b>	939	2.8	
	Counties with Average Population 10,000 – 20,000	Allamakee	66	2.3 (76)	Hardin	110	3.1 (24)
		Appanoose	37	1.4 (95)	Iowa	62	1.9 (85)
Buena Vista		101	2.6 (55)	Jefferson	132	4.3 (03)	
Butler		53	1.8 (89)	Keokuk	52	2.4 (66)	
Calhoun		38	1.9 (87)	Kossuth	95	3.0 (33)	
Cass		101	3.6 (07)	Louisa	60	2.5 (59)	
Cedar		120	3.3 (13)	Lyon	40	1.8 (90)	
Cherokee		32	1.4 (97)	Mitchell	44	2.0 (83)	
Chickasaw		58	2.4 (69)	Montgomery	94	4.3 (04)	
Clay		78	2.3 (71)	O'Brien	86	3.0 (31)	
Clayton		73	2.1 (82)	Page	106	3.3 (14)	
Crawford		109	3.3 (16)	Poweshiek	113	3.0 (34)	
Delaware		75	2.1 (79)	Sac	51	2.4 (65)	
Dickinson		99	3.0 (36)	Shelby	98	4.0 (06)	
Emmet		61	2.9 (39)	Tama	85	2.4 (67)	
Floyd		73	2.2 (78)	Union	108	4.5 (02)	
Franklin		48	2.3 (74)	Winnebago	57	2.6 (53)	
Hamilton		96	3.1 (28)	Wright	59	2.3 (77)	
Hancock		29	1.3 (98)	<b>Total</b>	2,799	2.7	
Counties with Average Population > 20,000	Boone	177	3.4 (11)	Lee	182	2.5 (61)	
	Buchanan	58	1.4 (96)	Mahaska	144	3.2 (17)	
	Carroll	131	3.1 (23)	Marion	192	2.9 (37)	
	Cerro Gordo	265	3.0 (35)	Marshall	282	3.6 (08)	
	Clinton	186	1.9 (86)	Muscatine	377	4.5 (01)	
	Des Moines	162	2.0 (84)	Plymouth	125	2.6 (56)	
	Fayette	98	2.4 (68)	Sioux	105	1.6 (92)	
	Henry	129	3.2 (19)	Wapello	239	3.4 (12)	
	Jackson	122	3.0 (32)	Webster	218	2.8 (42)	
	Jasper	90	1.2 (99)	Winneshiek	87	2.1 (81)	
			<b>Total</b>	3,369	2.7		
MSA Counties	Benton	121	2.3 (75)	Linn	1,108	2.7 (46)	
	Black Hawk	432	1.7 (91)	Madison	108	3.5 (10)	
	Bremer	100	2.1 (80)	Mills	77	2.5 (60)	
	Dallas	290	2.6 (54)	Polk	2,151	2.6 (52)	
	Dubuque	479	2.6 (51)	Pottawattamie	757	4.2 (05)	
	Grundy	57	2.3 (70)	Scott	827	2.6 (58)	
	Guthrie	73	3.3 (15)	Story	312	1.8 (88)	
	Harrison	99	3.2 (20)	Warren	244	2.8 (43)	
	Johnson	363	1.5 (94)	Washington	133	3.1 (22)	
	Jones	110	2.7 (47)	Woodbury	623	3.1 (30)	
			<b>Total</b>	8,464	2.5		
<b>State Total</b>		15,571	2.6				

<sup>1</sup>Rates per 1,000 population<sup>2</sup>Rank among 99 Iowa counties

Source: Iowa Department of Public Health, Vital Statistics

## Marriages 1989-2007

### Crude Rates



## Dissolutions 1989-2007

### Crude Rates

