

Injury Mortality

Transportation-related mortality accounted for 2,044 deaths in Iowa from 2002 to 2006, 91% of which were motor vehicle fatalities. The rates for these fatalities are highest in the rural counties and lowest in the most urban counties. Rates for firearm mortality are also highest in the most rural counties. The mortality rates for suicide show that the gaps in rates by county group have narrowed for the most recent time period. The crude rates for mortality from falls tend to be highest in rural counties, because of the greater numbers of elderly. This difference goes away when the rates are age-adjusted. Homicide rates are consistently higher in the urban counties. Poisoning mortality rates have shown variation across years for each county group. The state's mortality rate from burns has decreased since the 1979-1983 period. In general, drowning deaths have consistently decreased across all county levels since the 1979-1983 period. Deaths from all other unintentional injuries are difficult to compare for 1999-2006 versus preceding years due to changes in the mortality classification systems (discussed below).

HIGHLIGHTS...

- ✓ Injuries are the leading cause of death in persons 1-34 years of age.
- ✓ Motor vehicle deaths account for 91% of all transportation deaths in Iowa.
- ✓ Crude mortality rates from motor vehicle accidents, firearms, and falls are highest in rural counties.

Beginning in 1999, the tenth revision of the International Classification of Diseases (ICD-10) replaced the ninth version (ICD-9) as the standard mortality classification system. ICD-10 is more detailed than ICD-9; ICD-10 has about 8,000 categories while ICD-9 has about 5,000 categories. Also, some of the coding rules and rules for selecting the underlying cause of death have changed. Because of the new classification system, observed changes in mortality rates between 1999 and 2006 versus preceding years could be due, in part, to changes in the method of mortality classification. The ICD-9 and ICD-10 codes used for each type of Injury Mortality are listed in Appendix III.

The source of these mortality data are the cause of death data obtained from death certificates filed at the Iowa Department of Public Health. Analysis was done by the State Health Registry of Iowa and the Center for Public Health Statistics at the University of Iowa. Age-adjusted rates were calculated using the Year 2000 U.S. population distribution.

All Transportation Mortality 2002-2006

	County	#	Crude ¹	Adjusted ^{1,2}	County	#	Crude ¹	Adjusted ^{1,2}	
Counties with Average Population < 10,000	Adair	12	30.6	29.3	Lucas	10	21.0	20.4	
	Adams	6	28.2	23.0	Monona	18	37.9	40.6	
	Audubon	*	*	*	Monroe	5	12.9	12.8	
	Clarke	10	21.8	23.7	Osceola	*	*	*	
	Davis	14	32.8	31.4	Palo Alto	9	18.6	19.5	
	Decatur	8	18.9	20.6	Pocahontas	9	22.5	28.6	
	Fremont	6	15.7	15.8	Ringgold	*	*	*	
	Greene	7	14.1	12.6	Taylor	5	15.0	16.7	
	Howard	10	20.7	22.0	Van Buren	14	36.5	36.8	
	Humboldt	14	28.2	29.0	Wayne	12	36.8	37.2	
	Ida	9	24.7	28.0	Worth	*	*	*	
					Total	189	21.7	21.7	
	Counties with Average Population 10,000 – 20,000	Allamakee	10	13.8	14.6	Hardin	21	23.3	20.4
		Appanoose	13	19.5	21.6	Iowa	18	22.7	23.2
Buena Vista		12	12.0	10.5	Jefferson	16	20.4	21.1	
Butler		14	19.0	19.9	Keokuk	13	23.5	24.2	
Calhoun		10	19.2	20.8	Kossuth	10	12.4	9.2	
Cass		12	17.0	17.5	Louisa	16	26.6	27.2	
Cedar		15	16.6	16.9	Lyon	8	13.9	11.7	
Cherokee		17	27.9	21.7	Mitchell	11	20.3	20.2	
Chickasaw		26	41.7	37.6	Montgomery	10	17.9	17.1	
Clay		10	11.8	11.8	O'Brien	14	19.4	18.6	
Clayton		19	21.1	22.1	Page	5	6.2	5.8	
Crawford		12	14.4	14.9	Poweshiek	21	22.4	19.6	
Delaware		12	13.5	13.7	Sac	9	16.7	19.5	
Dickinson		11	13.3	13.8	Shelby	6	9.5	9.9	
Emmet		10	18.9	17.6	Tama	19	21.2	20.0	
Floyd		9	10.9	10.3	Union	12	20.0	22.2	
Franklin		6	11.3	8.4	Winnebago	16	28.5	30.7	
Hamilton		16	20.0	18.8	Wright	15	22.2	23.7	
Hancock		6	10.3	10.5	Total	480	18.1	17.7	
Counties with Average Population > 20,000	Boone	26	19.8	18.5	Lee	29	15.9	15.1	
	Buchanan	18	17.3	17.6	Mahaska	15	13.5	12.9	
	Carroll	20	19.1	17.2	Marion	26	16.0	14.8	
	Cerro Gordo	33	14.8	14.8	Marshall	22	11.2	10.9	
	Clinton	46	18.6	17.9	Muscatine	24	11.4	11.2	
	Des Moines	24	11.7	11.2	Plymouth	22	17.9	17.2	
	Fayette	34	32.2	30.0	Sioux	28	17.6	15.6	
	Henry	25	24.9	23.0	Wapello	36	20.1	20.2	
	Jackson	19	18.9	19.3	Webster	33	16.9	15.4	
	Jasper	30	16.1	15.7	Winnesiek	14	13.4	10.6	
				Total	524	16.7	16.0		
MSA Counties	Benton	14	10.6	9.5	Linn	100	10.1	10.0	
	Black Hawk	78	12.3	11.6	Madison	5	6.8	7.0	
	Bremer	11	9.4	9.1	Mills	11	14.9	14.6	
	Dallas	37	15.0	15.2	Polk	198	10.0	10.2	
	Dubuque	42	9.3	8.9	Pottawattamie	29	6.5	6.3	
	Grundy	13	21.2	19.5	Scott	73	9.1	9.1	
	Guthrie	19	33.8	32.2	Story	41	10.0	10.3	
	Harrison	20	25.7	26.1	Warren	27	12.7	12.2	
	Johnson	41	6.9	7.0	Washington	16	15.2	15.4	
	Jones	20	19.7	17.9	Woodbury	56	10.9	10.8	
					Total	851	10.5	10.3	
State Total	2,044	13.9	13.4						

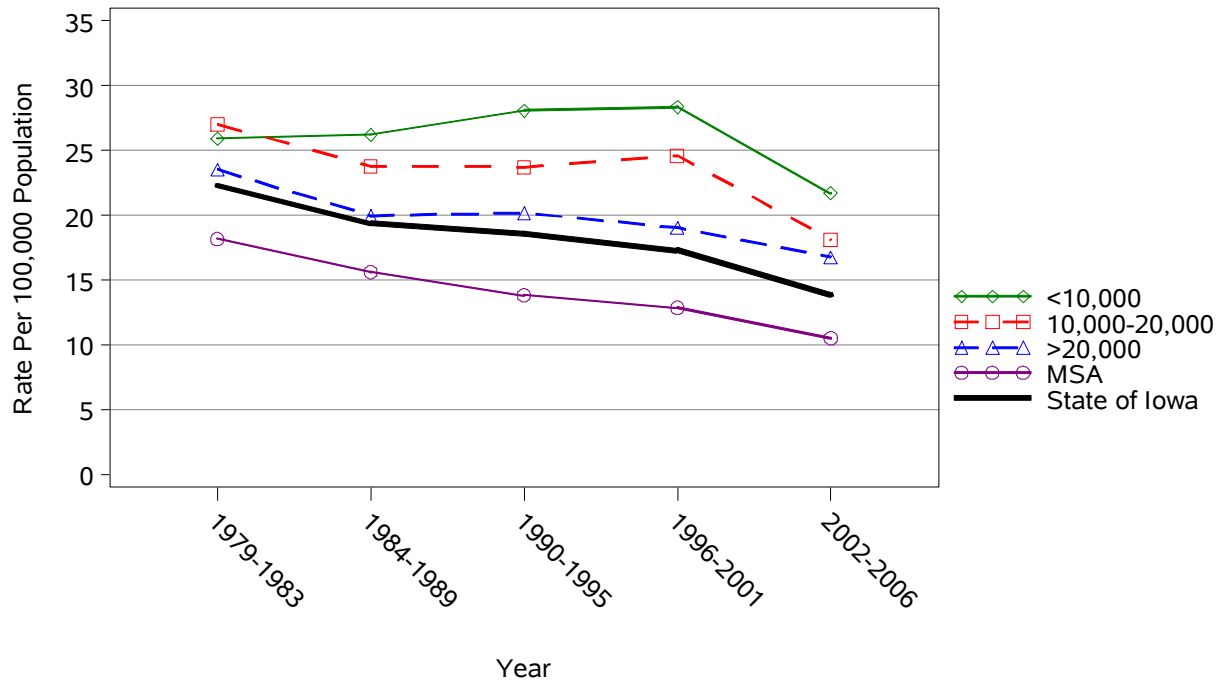
¹Rates per 100,000 Population²Adjusted to Year 2000 Population

Source: Iowa Department of Public Health via the State Health Registry of Iowa

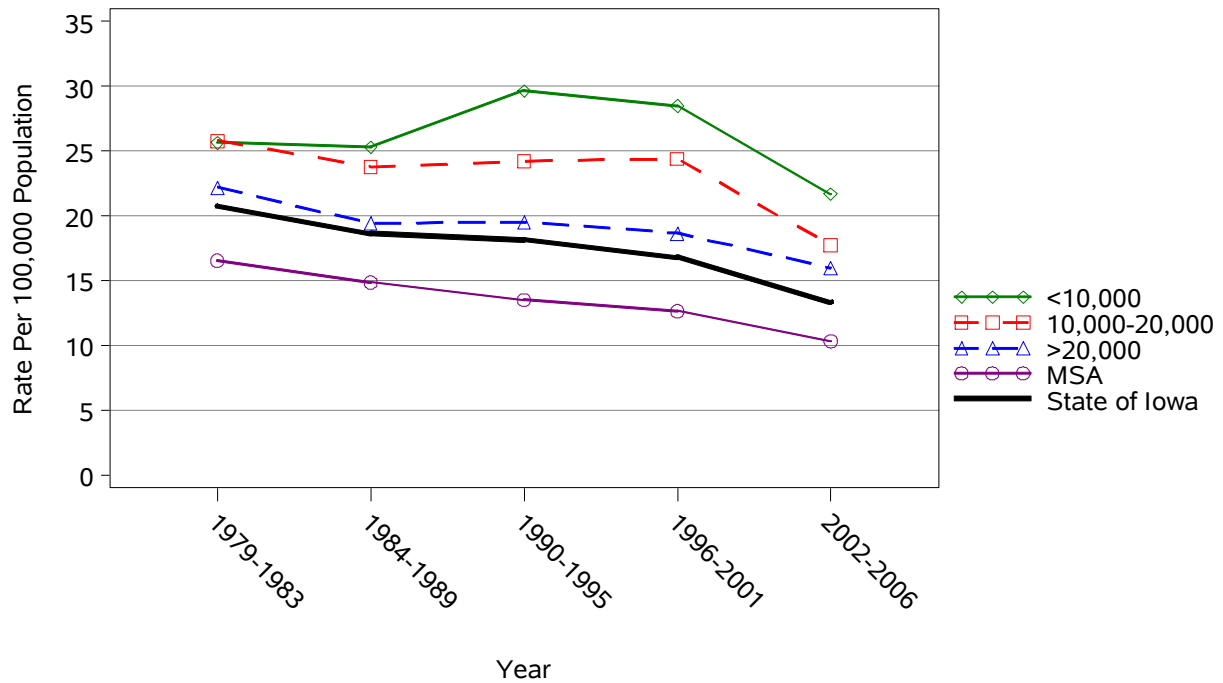
* represents a count less than 5

All Transportation Mortality by County Group 1979-2006

Crude Rates



Age-Adjusted Rates



Motor Vehicle Traffic Mortality 2002-2006

	County	#	Crude ¹	Adjusted ^{1,2}	County	#	Crude ¹	Adjusted ^{1,2}	
Counties with Average Population < 10,000	Adair	12	30.6	29.3	Lucas	10	21.0	20.4	
	Adams	5	23.5	20.6	Monona	15	31.6	35.6	
	Audubon	*	*	*	Monroe	*	*	*	
	Clarke	9	19.6	21.5	Osceola	*	*	*	
	Davis	12	28.1	27.5	Palo Alto	7	14.5	16.8	
	Decatur	7	16.5	18.8	Pocahontas	9	22.5	28.6	
	Fremont	6	15.7	15.8	Ringgold	*	*	*	
	Greene	6	12.1	10.6	Taylor	5	15.0	16.7	
	Howard	8	16.5	17.7	Van Buren	14	36.5	36.8	
	Humboldt	14	28.2	29.0	Wayne	11	33.8	35.1	
	Ida	8	21.9	25.9	Worth	*	*	*	
					Total	171	19.6	20.0	
	Counties with Average Population 10,000 – 20,000	Allamakee	10	13.8	14.6	Hardin	21	23.3	20.4
		Appanoose	13	19.5	21.6	Iowa	16	20.2	21.0
Buena Vista		11	11.0	9.5	Jefferson	16	20.4	21.1	
Butler		13	17.6	19.2	Keokuk	13	23.5	24.2	
Calhoun		10	19.2	20.8	Kossuth	10	12.4	9.2	
Cass		10	14.2	14.4	Louisa	14	23.3	24.0	
Cedar		13	14.4	14.1	Lyon	8	13.9	11.7	
Cherokee		17	27.9	21.7	Mitchell	9	16.6	16.0	
Chickasaw		26	41.7	37.6	Montgomery	10	17.9	17.1	
Clay		10	11.8	11.8	O'Brien	12	16.6	16.2	
Clayton		17	18.9	19.8	Page	5	6.2	5.8	
Crawford		11	13.2	13.9	Poweshiek	19	20.3	18.0	
Delaware		11	12.4	12.7	Sac	9	16.7	19.5	
Dickinson		11	13.3	13.8	Shelby	6	9.5	9.9	
Emmet		6	11.3	11.2	Tama	16	17.9	17.1	
Floyd		9	10.9	10.3	Union	12	20.0	22.2	
Franklin		6	11.3	8.4	Winnebago	16	28.5	30.7	
Hamilton		15	18.7	17.7	Wright	14	20.7	21.4	
Hancock		6	10.3	10.5	Total	451	17.0	16.7	
Counties with Average Population > 20,000	Boone	23	17.5	16.2	Lee	22	12.1	11.5	
	Buchanan	16	15.4	15.4	Mahaska	15	13.5	12.9	
	Carroll	17	16.2	14.8	Marion	23	14.2	13.2	
	Cerro Gordo	29	13.0	13.0	Marshall	18	9.2	8.9	
	Clinton	38	15.4	15.0	Muscatine	23	11.0	10.8	
	Des Moines	19	9.3	8.7	Plymouth	22	17.9	17.2	
	Fayette	27	25.6	23.4	Sioux	26	16.3	14.6	
	Henry	24	23.9	21.9	Wapello	31	17.3	17.2	
	Jackson	19	18.9	19.3	Webster	28	14.3	13.0	
	Jasper	27	14.5	14.3	Winneshiak	13	12.4	9.7	
				Total	460	14.7	14.0		
MSA Counties	Benton	14	10.6	9.5	Linn	91	9.2	9.1	
	Black Hawk	74	11.7	11.2	Madison	*	*	*	
	Bremer	11	9.4	9.1	Mills	10	13.5	13.5	
	Dallas	30	12.2	12.4	Polk	173	8.7	8.9	
	Dubuque	37	8.2	7.9	Pottawattamie	27	6.1	5.9	
	Grundy	13	21.2	19.5	Scott	68	8.5	8.5	
	Guthrie	19	33.8	32.2	Story	36	8.7	9.2	
	Harrison	19	24.5	24.8	Warren	25	11.8	11.4	
	Johnson	37	6.2	6.4	Washington	16	15.2	15.4	
	Jones	18	17.7	15.9	Woodbury	51	10.0	9.8	
					Total	769-773	9.5-9.6	9.4	
State Total	1851-55	12.5-12.6	12.1						

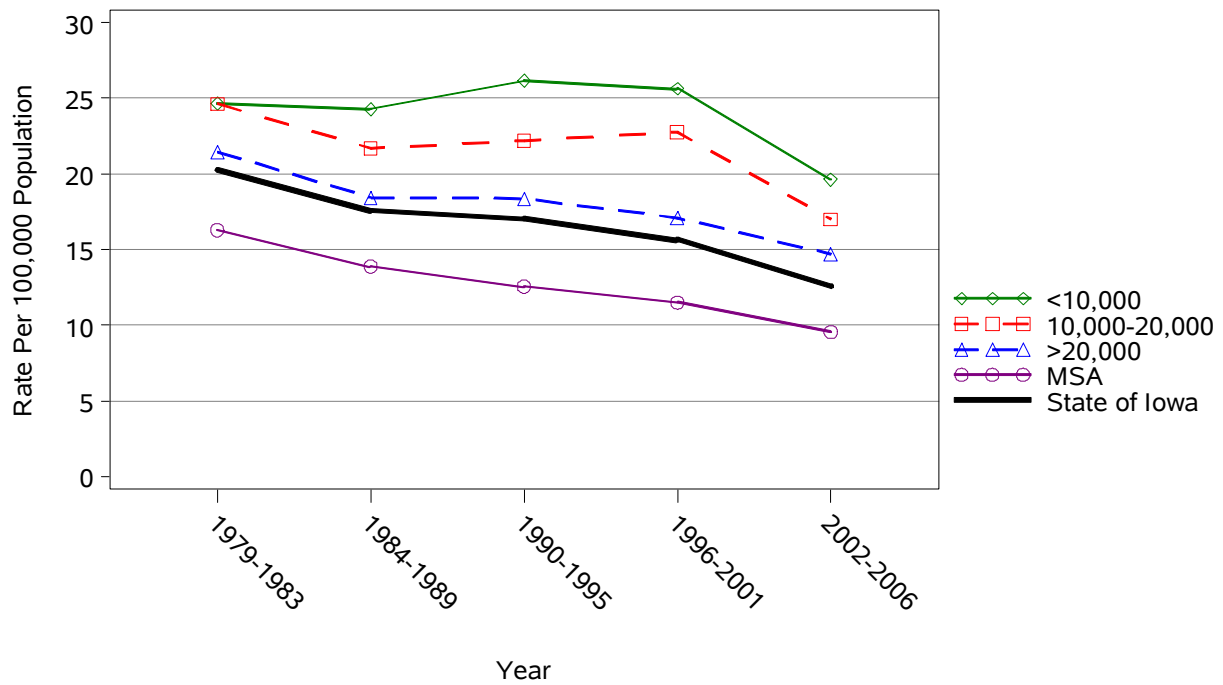
¹Rates per 100,000 Population²Adjusted to Year 2000 Population

Source: Iowa Department of Public Health via the State Health Registry of Iowa

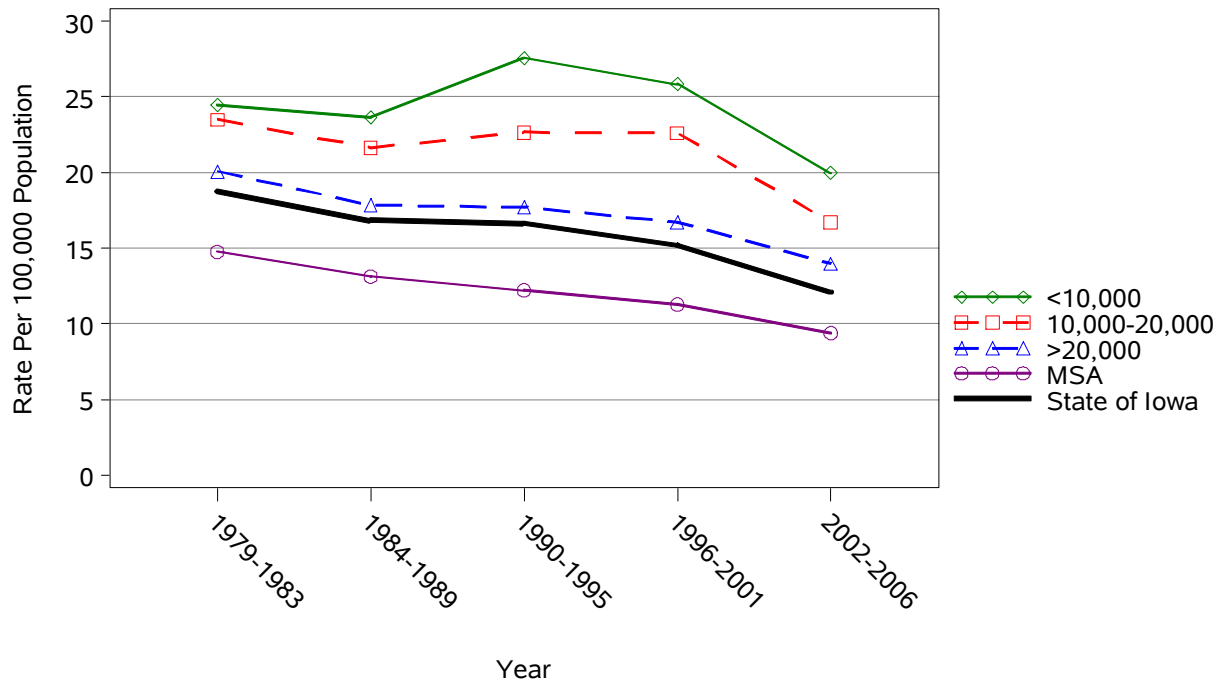
* represents a count less than 5

Motor Vehicle Traffic Mortality by County Group 1979-2006

Crude Rates



Age-Adjusted Rates



Suicides 2002-2006

	County	#	Crude ¹	Adjusted ^{1,2}	County	#	Crude ¹	Adjusted ^{1,2}	
Counties with Average Population < 10,000	Adair	*	*	*	Lucas	*	*	*	
	Adams	*	*	*	Monona	6	12.6	8.8	
	Audubon	*	*	*	Monroe	5	12.9	12.3	
	Clarke	8	17.5	17.9	Osceola	6	17.8	19.4	
	Davis	*	*	*	Palo Alto	*	*	*	
	Decatur	*	*	*	Pocahontas	7	17.5	20.2	
	Fremont	*	*	*	Ringgold	6	22.9	25.2	
	Greene	*	*	*	Taylor	5	15.0	17.0	
	Howard	*	*	*	Van Buren	*	*	*	
	Humboldt	12	24.2	26.3	Wayne	5	15.4	16.0	
	Ida	*	*	*	Worth	5	12.9	11.9	
					Total	99	11.4	11.8	
	Counties with Average Population 10,000 – 20,000	Allamakee	6	8.3	8.3	Hardin	11	12.2	12.5
		Appanoose	9	13.5	14.8	Iowa	13	16.4	17.5
Buena Vista		9	9.0	10.2	Jefferson	13	16.6	15.9	
Butler		10	13.5	13.8	Keokuk	7	12.6	13.0	
Calhoun		6	11.5	13.5	Kossuth	5	6.2	8.0	
Cass		7	9.9	8.7	Louisa	6	10.0	10.2	
Cedar		8	8.9	8.7	Lyon	6	10.4	11.8	
Cherokee		5	8.2	6.9	Mitchell	5	9.2	9.8	
Chickasaw		10	16.0	19.0	Montgomery	7	12.5	9.2	
Clay		8	9.5	9.1	O'Brien	9	12.5	11.6	
Clayton		13	14.4	13.6	Page	11	13.6	11.1	
Crawford		5	6.0	5.9	Poweshiek	5	5.3	4.3	
Delaware		5	5.6	5.9	Sac	10	18.6	16.0	
Dickinson		9	10.9	10.3	Shelby	*	*	*	
Emmet		9	17.0	16.6	Tama	12	13.4	14.2	
Floyd		12	14.6	13.3	Union	12	20.0	19.7	
Franklin		6	11.3	13.9	Winnebago	*	*	*	
Hamilton		6	7.5	7.3	Wright	10	14.8	16.4	
Hancock		5	8.6	10.0	Total	298	11.2	11.3	
Counties with Average Population > 20,000	Boone	12	9.1	9.2	Lee	31	17.0	17.8	
	Buchanan	11	10.6	11.2	Mahaska	17	15.3	14.5	
	Carroll	12	11.4	10.9	Marion	16	9.9	8.9	
	Cerro Gordo	31	13.9	13.6	Marshall	18	9.2	9.4	
	Clinton	34	13.8	13.2	Muscatine	26	12.4	12.7	
	Des Moines	29	14.2	13.9	Plymouth	15	12.2	13.3	
	Fayette	13	12.3	13.5	Sioux	8	5.0	5.2	
	Henry	10	10.0	9.5	Wapello	18	10.1	10.4	
	Jackson	16	15.9	16.5	Webster	21	10.7	11.5	
	Jasper	20	10.8	10.7	Winneshiek	10	9.5	9.5	
					Total	368	11.8	11.7	
MSA Counties	Benton	8	6.1	6.3	Linn	108	10.9	10.7	
	Black Hawk	54	8.5	8.8	Madison	11	14.9	15.2	
	Bremer	13	11.1	10.6	Mills	*	*	*	
	Dallas	18	7.3	7.6	Polk	218	11.0	11.0	
	Dubuque	43	9.5	9.6	Pottawattamie	52	11.7	11.7	
	Grundy	*	*	*	Scott	91	11.4	11.3	
	Guthrie	12	21.3	21.5	Story	43	10.5	11.0	
	Harrison	10	12.9	12.7	Warren	30	14.1	14.3	
	Johnson	46	7.7	8.6	Washington	10	9.5	9.8	
	Jones	11	10.8	10.6	Woodbury	63	12.3	12.5	
					Total	848	10.5	10.4	
State Total	1,613	10.9	10.8						

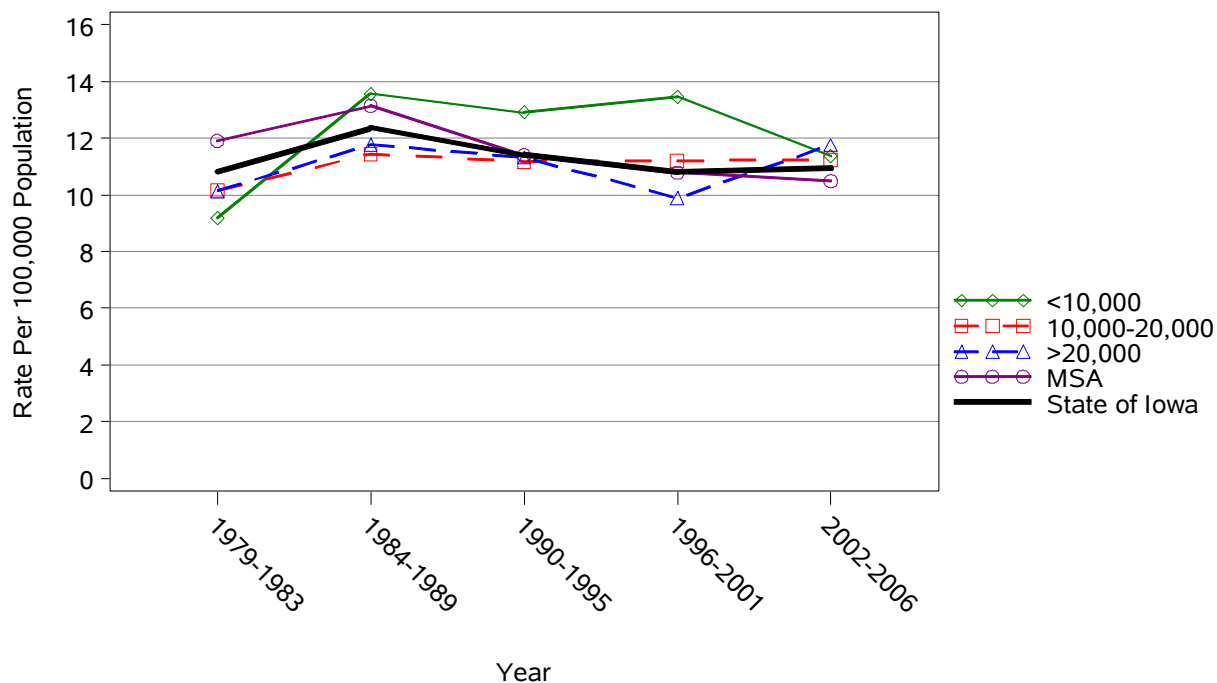
¹Rates per 100,000 Population²Adjusted to Year 2000 Population

Source: Iowa Department of Public Health via the State Health Registry of Iowa

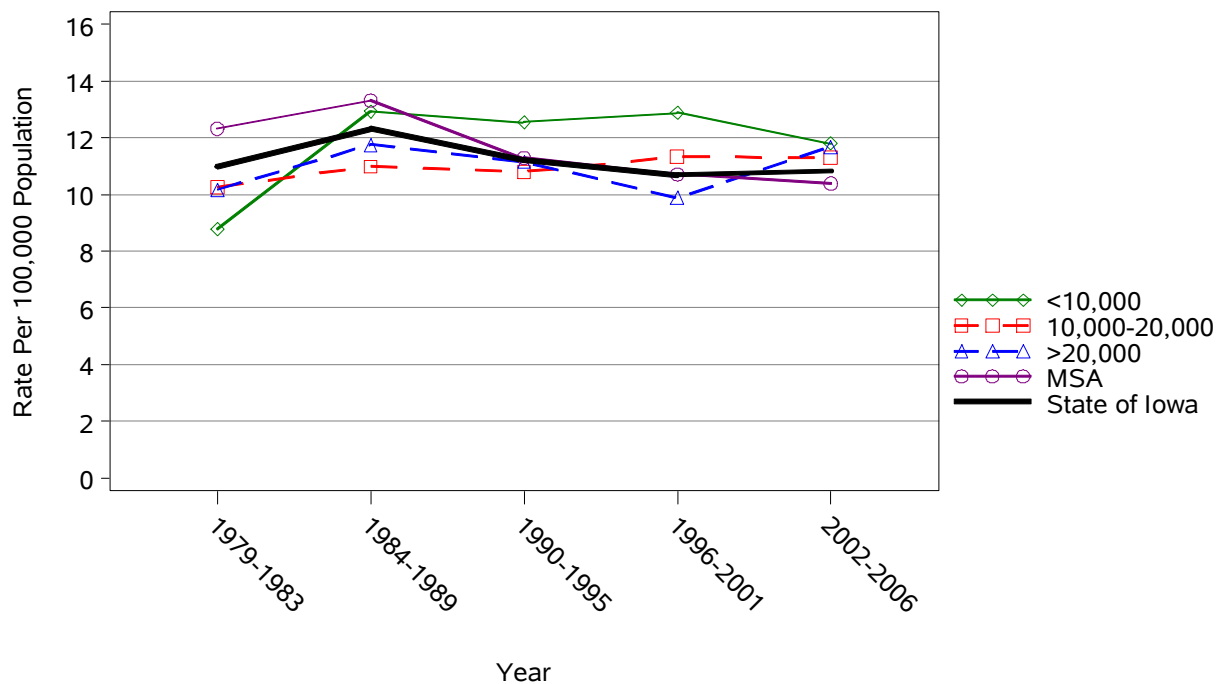
* represents a count less than 5

Suicides by County Group 1979-2006

Crude Rates



Age-Adjusted Rates



Firearms Mortality 2002-2006

	County	#	Crude ¹	Adjusted ^{1,2}	County	#	Crude ¹	Adjusted ^{1,2}	
Counties with Average Population < 10,000	Adair	*	*	*	Lucas	*	*	*	
	Adams	*	*	*	Monona	6	12.6	9.3	
	Audubon	*	*	*	Monroe	*	*	*	
	Clarke	*	*	*	Osceola	*	*	*	
	Davis	*	*	*	Palo Alto	*	*	*	
	Decatur	*	*	*	Pocahontas	6	15.0	16.2	
	Fremont	*	*	*	Ringgold	*	*	*	
	Greene	*	*	*	Taylor	*	*	*	
	Howard	*	*	*	Van Buren	9	23.4	24.3	
	Humboldt	8	16.1	17.8	Wayne	*	*	*	
	Ida	*	*	*	Worth	5	12.9	13.2	
					Total	81	9.3	9.3	
	Counties with Average Population 10,000 – 20,000	Allamakee	*	*	*	Hardin	7	7.8	6.5
		Appanoose	*	*	*	Iowa	10	12.6	13.6
Buena Vista		*	*	*	Jefferson	6	7.7	6.5	
Butler		5	6.8	6.3	Keokuk	*	*	*	
Calhoun		*	*	*	Kossuth	*	*	*	
Cass		5	7.1	5.9	Louisa	5	8.3	8.9	
Cedar		6	6.7	6.8	Lyon	*	*	*	
Cherokee		*	*	*	Mitchell	*	*	*	
Chickasaw		6	9.6	12.2	Montgomery	5	8.9	6.2	
Clay		5	5.9	6.0	O'Brien	6	8.3	7.5	
Clayton		9	10.0	9.2	Page	9	11.2	9.4	
Crawford		*	*	*	Poweshiek	*	*	*	
Delaware		*	*	*	Sac	9	16.7	16.7	
Dickinson		5	6.1	5.0	Shelby	*	*	*	
Emmet		8	15.1	14.7	Tama	5	5.6	5.8	
Floyd		7	8.5	6.9	Union	6	10.0	9.2	
Franklin		5	9.4	11.7	Winnebago	*	*	*	
Hamilton		5	6.2	6.3	Wright	7	10.3	12.1	
Hancock		*	*	*	Total	179	6.7	6.6	
Counties with Average Population > 20,000	Boone	6	4.6	4.5	Lee	12	6.6	6.2	
	Buchanan	8	7.7	7.6	Mahaska	7	6.3	6.1	
	Carroll	10	9.5	9.4	Marion	9	5.6	5.1	
	Cerro Gordo	18	8.0	7.7	Marshall	12	6.1	6.1	
	Clinton	23	9.3	9.1	Muscatine	23	11.0	11.4	
	Des Moines	24	11.7	11.8	Plymouth	13	10.6	11.7	
	Fayette	7	6.6	6.6	Sioux	10	6.3	5.8	
	Henry	*	*	*	Wapello	9	5.0	4.9	
	Jackson	11	10.9	11.3	Webster	11	5.6	5.5	
	Jasper	8	4.3	4.4	Winnesiek	*	*	*	
					Total	228	7.3	7.2	
MSA Counties	Benton	*	*	*	Linn	53	5.3	5.3	
	Black Hawk	34	5.4	5.0	Madison	7	9.5	9.5	
	Bremer	7	6.0	5.4	Mills	5	6.8	6.2	
	Dallas	13	5.3	5.2	Polk	121	6.1	6.2	
	Dubuque	16	3.5	3.5	Pottawattamie	24	5.4	5.5	
	Grundy	*	*	*	Scott	63	7.9	8.0	
	Guthrie	9	16.0	15.9	Story	21	5.1	5.1	
	Harrison	*	*	*	Warren	18	8.5	8.4	
	Johnson	19	3.2	3.8	Washington	6	5.7	5.1	
	Jones	7	6.9	7.1	Woodbury	29	5.7	5.8	
					Total	461	5.7	5.6	
State Total		949	6.4	6.3					

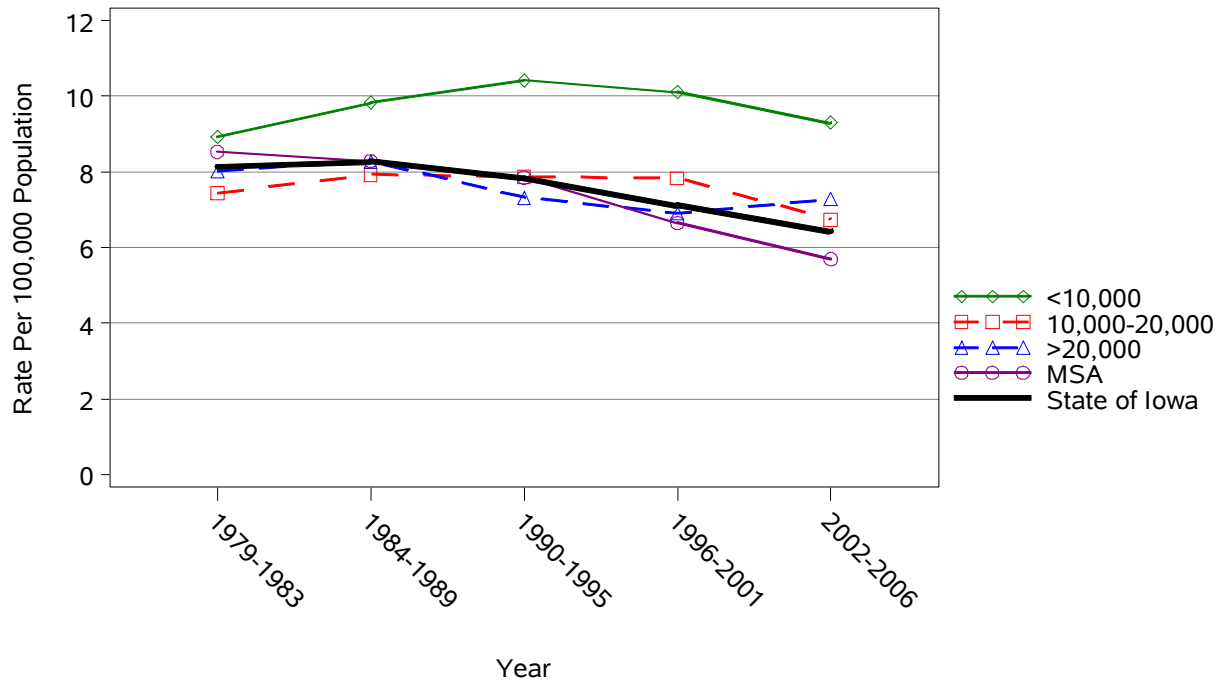
¹Rates per 100,000 Population²Adjusted to Year 2000 Population

Source: Iowa Department of Public Health via the State Health Registry of Iowa

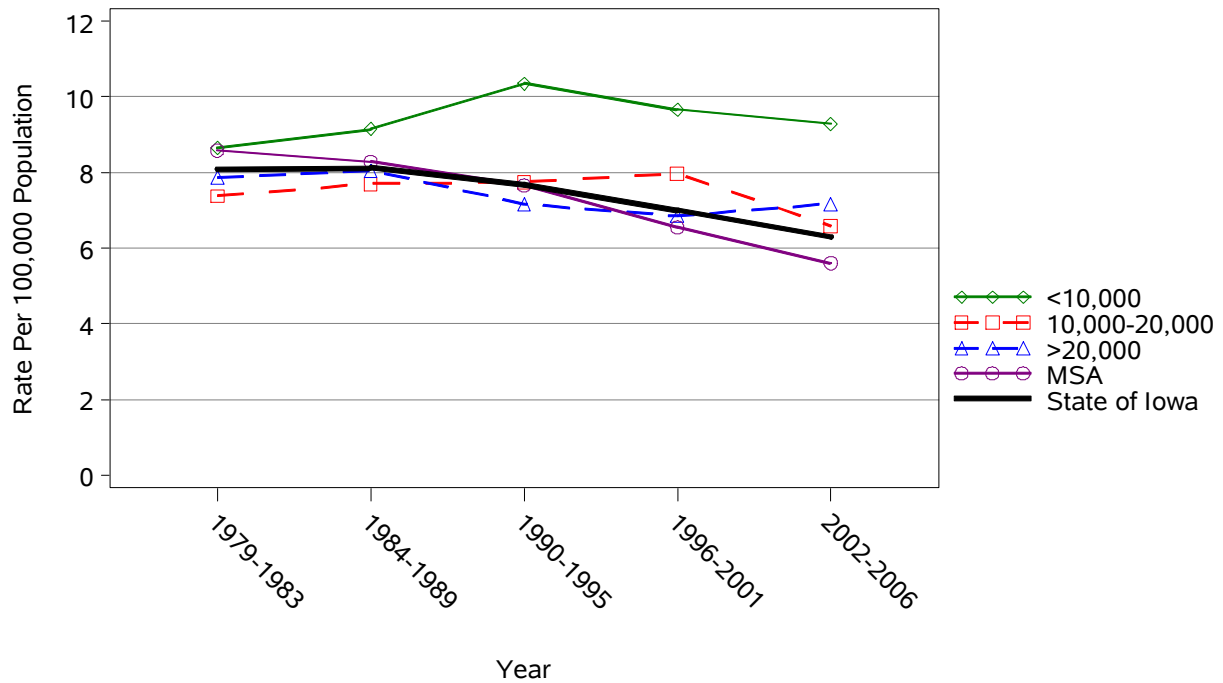
* represents a count less than 5

Firearms Mortality by County Group 1979-2006

Crude Rates



Age-Adjusted Rates



Falls Mortality 2002-2006

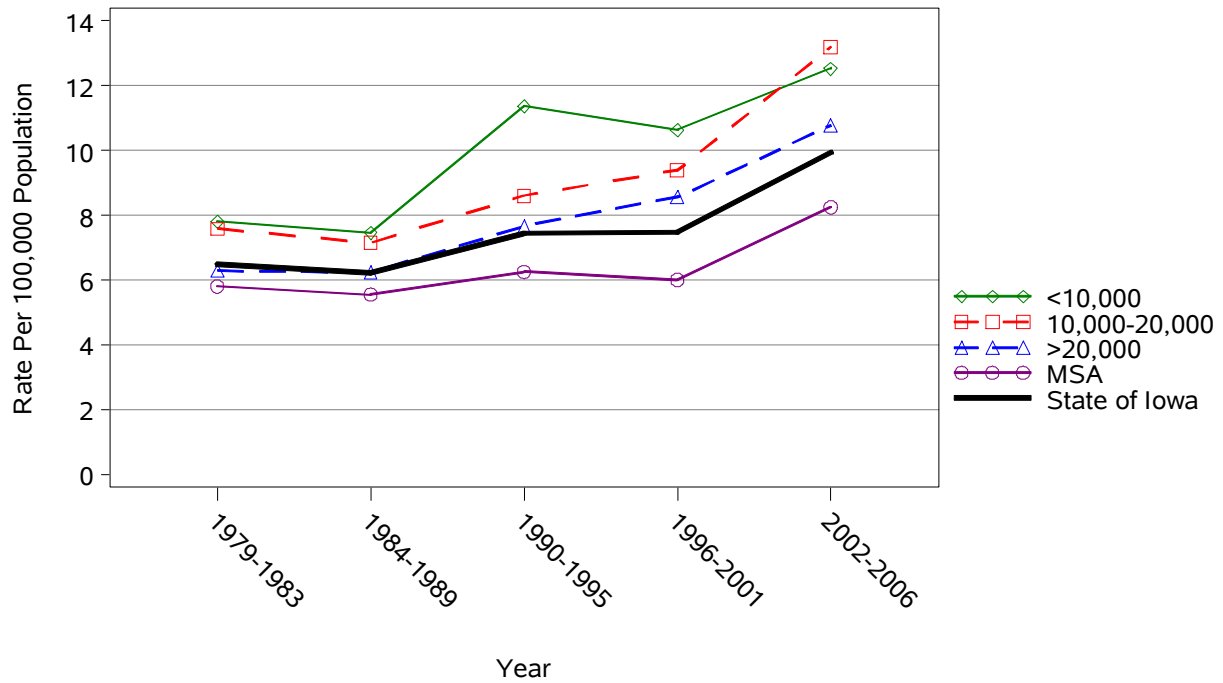
	County	#	Crude ¹	Adjusted ^{1,2}	County	#	Crude ¹	Adjusted ^{1,2}	
	Counties with Average Population < 10,000	Adair	9	23.0	10.5	Lucas	*	*	*
Adams		*	*	*	Monona	5	10.5	5.9	
Audubon		*	*	*	Monroe	7	18.1	10.8	
Clarke		6	13.1	9.4	Osceola	*	*	*	
Davis		5	11.7	8.3	Palo Alto	7	14.5	9.0	
Decatur		*	*	*	Pocahontas	6	15.0	5.7	
Fremont		*	*	*	Ringgold	*	*	*	
Greene		8	16.2	6.3	Taylor	*	*	*	
Howard		*	*	*	Van Buren	*	*	*	
Humboldt		5	10.1	5.5	Wayne	7	21.5	10.3	
Ida		9	24.7	11.3	Worth	*	*	*	
					Total	109	12.5	6.9	
Counties with Average Population 10,000 – 20,000		Allamakee	7	9.7	5.7	Hardin	14	15.5	9.0
		Appanoose	*	*	*	Iowa	6	7.6	5.0
	Buena Vista	13	13.1	8.9	Jefferson	12	15.3	12.1	
	Butler	12	16.3	8.5	Keokuk	7	12.6	6.0	
	Calhoun	11	21.1	10.1	Kossuth	7	8.7	4.7	
	Cass	15	21.3	10.2	Louisa	5	8.3	6.1	
	Cedar	11	12.2	8.7	Lyon	*	*	*	
	Cherokee	8	13.1	7.6	Mitchell	7	12.9	6.8	
	Chickasaw	13	20.8	12.2	Montgomery	6	10.7	6.4	
	Clay	6	7.1	5.2	O'Brien	6	8.3	3.8	
	Clayton	8	8.9	7.0	Page	7	8.7	5.4	
	Crawford	9	10.8	6.9	Poweshiek	18	19.2	10.0	
	Delaware	9	10.1	7.3	Sac	7	13.0	6.6	
	Dickinson	15	18.2	9.7	Shelby	7	11.1	5.0	
	Emmet	6	11.3	6.4	Tama	13	14.5	8.5	
	Floyd	13	15.8	8.4	Union	5	8.3	4.6	
	Franklin	15	28.3	18.0	Winnebago	8	14.2	8.0	
	Hamilton	16	20.0	12.8	Wright	15	22.2	12.6	
	Hancock	7	12.0	7.2	Total	350	13.2	7.7	
Counties with Average Population > 20,000	Boone	12	9.1	6.8	Lee	32	17.6	11.8	
	Buchanan	13	12.5	9.7	Mahaska	11	9.9	6.7	
	Carroll	10	9.5	5.0	Marion	23	14.2	9.4	
	Cerro Gordo	31	13.9	9.0	Marshall	30	15.3	10.3	
	Clinton	10	4.0	2.7	Muscatine	19	9.1	8.5	
	Des Moines	23	11.2	7.5	Plymouth	8	6.5	4.2	
	Fayette	7	6.6	3.5	Sioux	6	3.8	2.8	
	Henry	11	10.9	6.7	Wapello	21	11.7	8.3	
	Jackson	6	6.0	4.1	Webster	30	15.4	9.5	
	Jasper	25	13.4	9.5	Winneshiek	9	8.6	5.3	
					Total	337	10.8	7.3	
MSA Counties	Benton	14	10.6	7.7	Linn	89	9.0	8.4	
	Black Hawk	64	10.1	8.3	Madison	7	9.5	7.1	
	Bremer	10	8.5	6.1	Mills	6	8.1	7.2	
	Dallas	15	6.1	6.9	Polk	137	6.9	7.2	
	Dubuque	43	9.5	7.0	Pottawattamie	27	6.1	5.5	
	Grundy	7	11.4	6.6	Scott	91	11.4	11.3	
	Guthrie	5	8.9	5.4	Story	16	3.9	4.0	
	Harrison	6	7.7	4.7	Warren	16	7.5	7.0	
	Johnson	41	6.9	9.8	Washington	17	16.1	8.9	
	Jones	10	9.9	6.7	Woodbury	46	9.0	8.0	
					Total	667	8.2	7.7	
State Total	1,463	9.9	7.5						

¹Rates per 100,000 Population
²Adjusted to Year 2000 Population

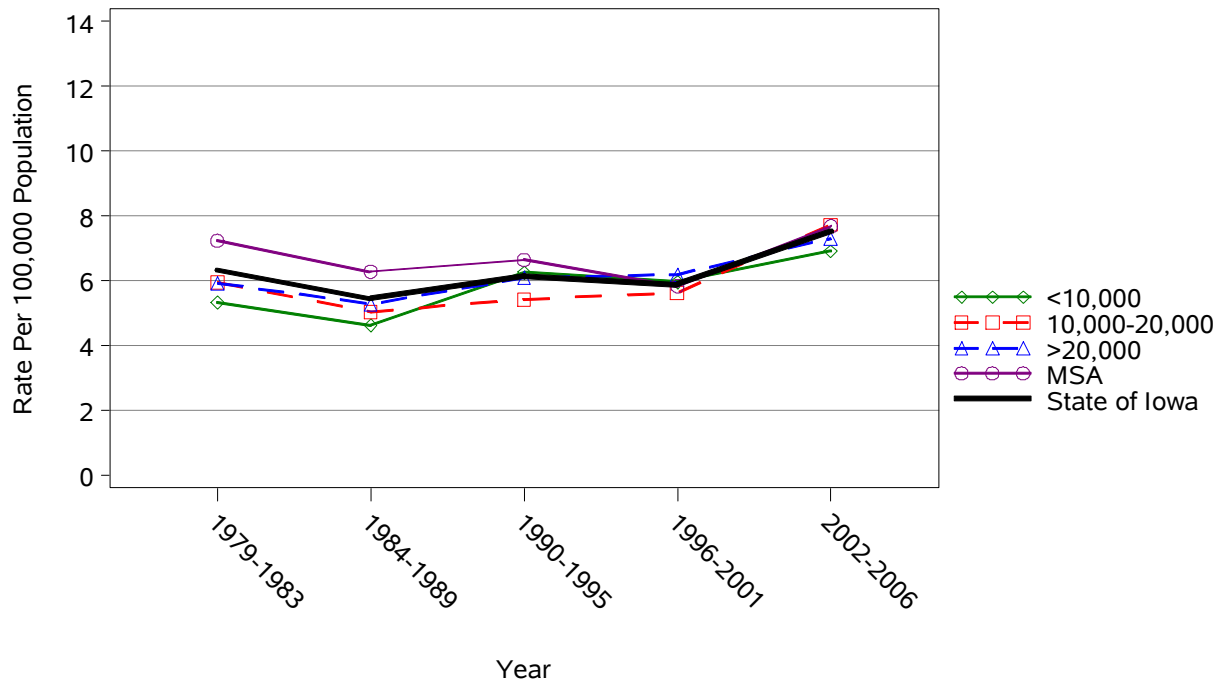
Source: Iowa Department of Public Health via the State Health Registry of Iowa
 * represents a count less than 5

Falls Mortality by County Group 1979-2006

Crude Rates



Age-Adjusted Rates



Homicides 2002-2006

	County	#	Crude Rate ¹	Adjusted Rate ^{1,2}	County	#	Crude Rate ¹	Adjusted Rate ^{1,2}	
Counties with Average Population < 10,000	Adair	*	*	*	Lucas	*	*	*	
	Adams	*	*	*	Monona	*	*	*	
	Audubon	*	*	*	Monroe	*	*	*	
	Clarke	*	*	*	Osceola	*	*	*	
	Davis	*	*	*	Palo Alto	*	*	*	
	Decatur	*	*	*	Pocahontas	*	*	*	
	Fremont	*	*	*	Ringgold	*	*	*	
	Greene	*	*	*	Taylor	*	*	*	
	Howard	*	*	*	Van Buren	5	13.0	12.8	
	Humboldt	*	*	*	Wayne	*	*	*	
	Ida	*	*	*	Worth	*	*	*	
					Total	11	1.3	1.2	
	Counties with Average Population 10,000 – 20,000	Allamakee	*	*	*	Hardin	5	5.5	6.0
		Appanoose	*	*	*	Iowa	*	*	*
Buena Vista		*	*	*	Jefferson	*	*	*	
Butler		*	*	*	Keokuk	*	*	*	
Calhoun		*	*	*	Kossuth	*	*	*	
Cass		*	*	*	Louisa	*	*	*	
Cedar		*	*	*	Lyon	*	*	*	
Cherokee		*	*	*	Mitchell	*	*	*	
Chickasaw		*	*	*	Montgomery	*	*	*	
Clay		*	*	*	O'Brien	*	*	*	
Clayton		*	*	*	Page	*	*	*	
Crawford		*	*	*	Poweshiek	*	*	*	
Delaware		*	*	*	Sac	*	*	*	
Dickinson		*	*	*	Shelby	*	*	*	
Emmet		*	*	*	Tama	*	*	*	
Floyd		*	*	*	Union	*	*	*	
Franklin		*	*	*	Winnebago	*	*	*	
Hamilton		*	*	*	Wright	*	*	*	
Hancock		*	*	*	Total	31	1.2	1.3	
Counties with Average Population > 20,000	Boone	*	*	*	Lee	*	*	*	
	Buchanan	*	*	*	Mahaska	*	*	*	
	Carroll	*	*	*	Marion	*	*	*	
	Cerro Gordo	*	*	*	Marshall	*	*	*	
	Clinton	6	2.4	2.8	Muscatine	8	3.8	4.0	
	Des Moines	9	4.4	4.4	Plymouth	*	*	*	
	Fayette	*	*	*	Sioux	*	*	*	
	Henry	*	*	*	Wapello	*	*	*	
	Jackson	*	*	*	Webster	6	3.1	3.1	
	Jasper	*	*	*	Winnesiek	*	*	*	
				Total	52	1.7	1.8		
MSA Counties	Benton	*	*	*	Linn	16	1.6	1.6	
	Black Hawk	16	2.5	2.1	Madison	*	*	*	
	Bremer	*	*	*	Mills	*	*	*	
	Dallas	5	2.0	2.0	Polk	63	3.2	3.2	
	Dubuque	7	1.5	1.7	Pottawattamie	12	2.7	2.8	
	Grundy	*	*	*	Scott	31	3.9	3.9	
	Guthrie	*	*	*	Story	*	*	*	
	Harrison	*	*	*	Warren	*	*	*	
	Johnson	*	*	*	Washington	*	*	*	
	Jones	*	*	*	Woodbury	11	2.1	2.1	
				Total	176	2.2	2.1		
State Total	270	1.8	1.9						

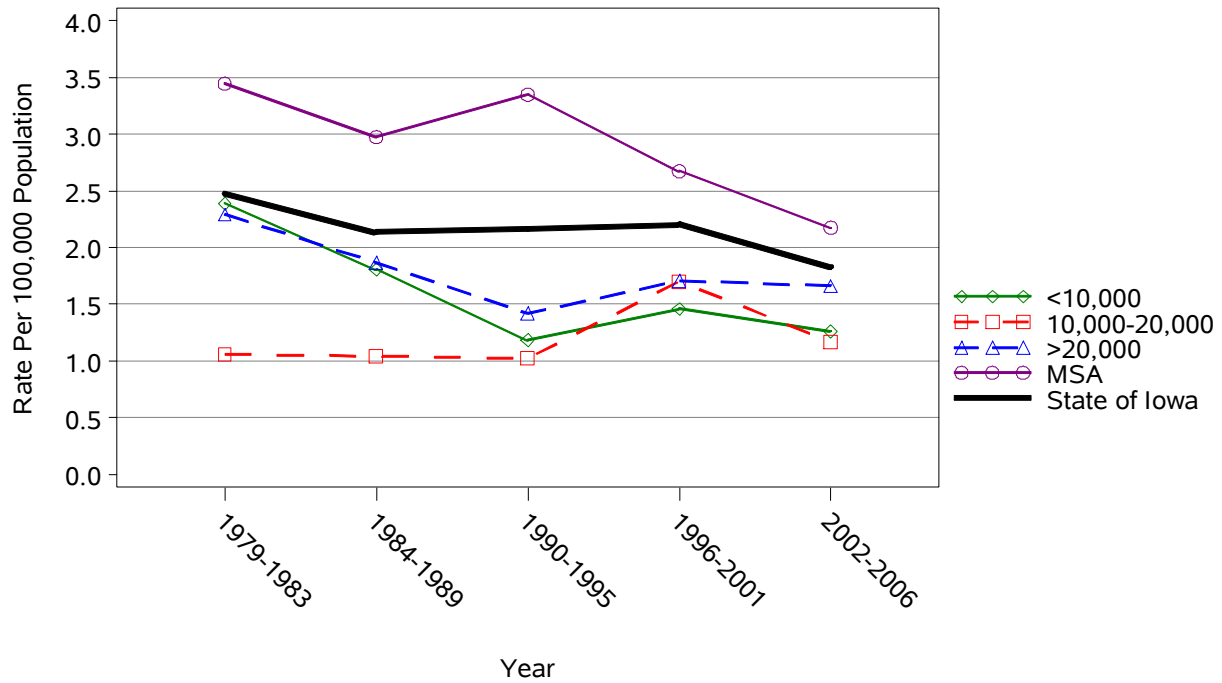
¹Rates per 100,000 Population²Adjusted to Year 2000 Population

Source: Iowa Department of Public Health via the State Health Registry of Iowa

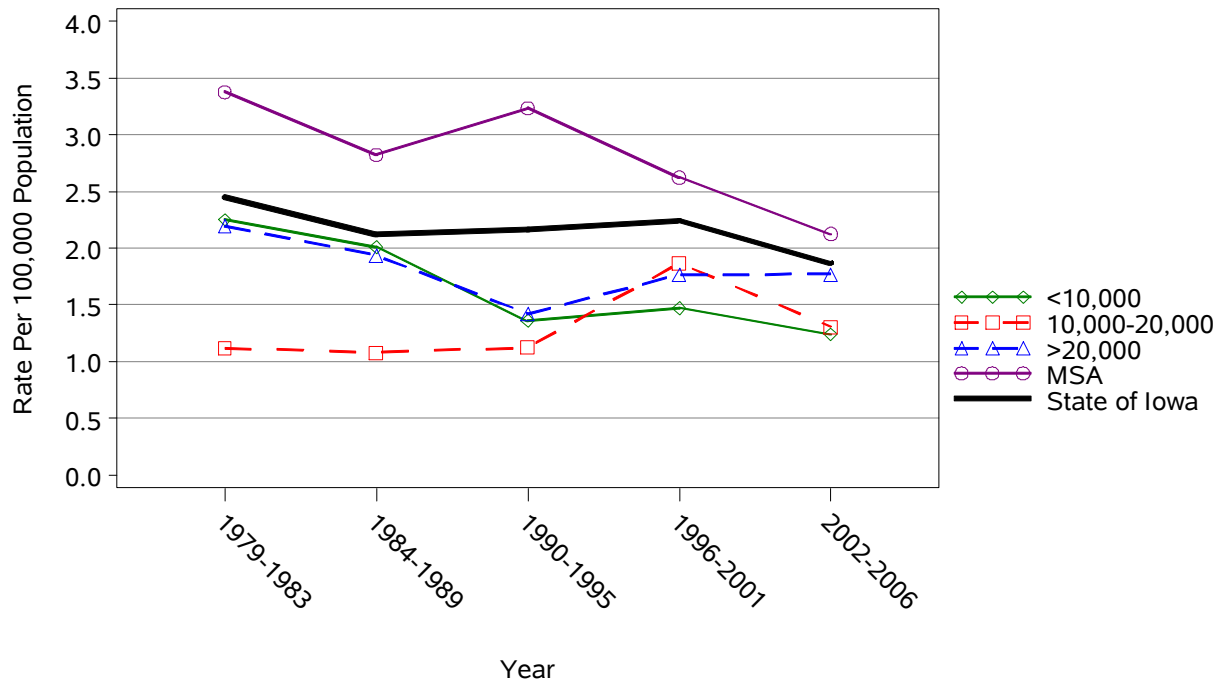
* represents a count less than 5

Homicides by County Group 1979-2006

Crude Rates



Age-Adjusted Rates



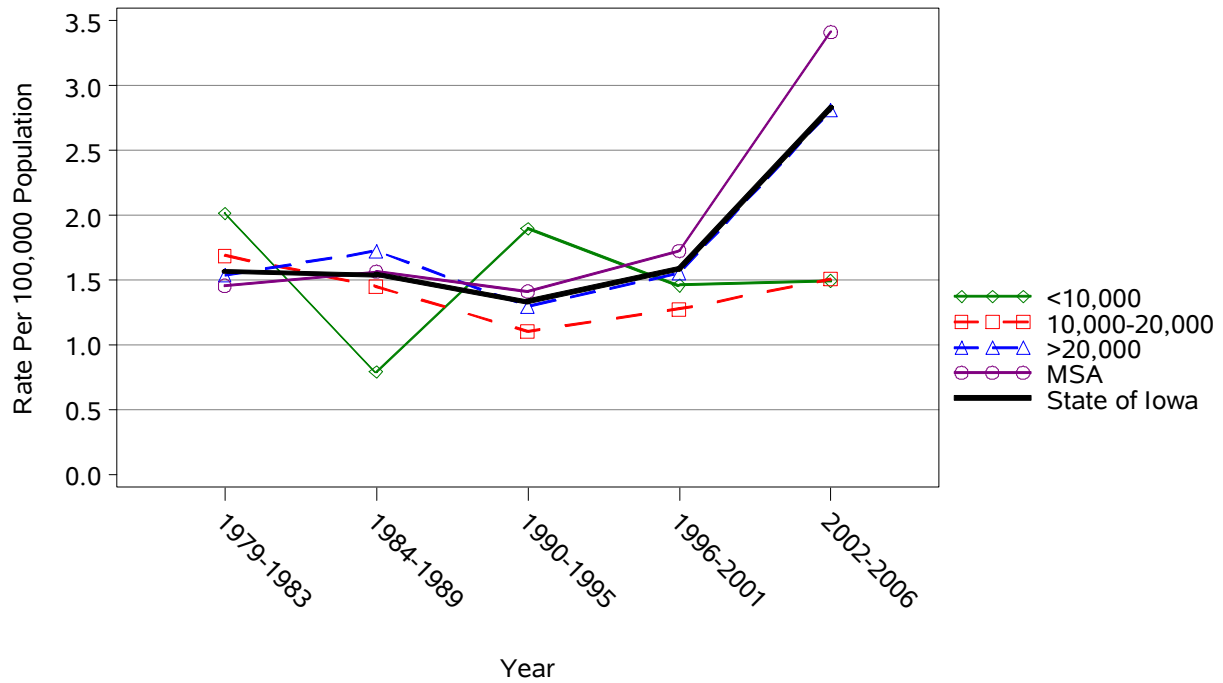
Poisoning Mortality 2002-2006

	County	#	Crude ¹	Adjusted ^{1,2}	County	#	Crude ¹	Adjusted ^{1,2}	
Counties with Average Population < 10,000	Adair	*	*	*	Lucas	*	*	*	
	Adams	*	*	*	Monona	*	*	*	
	Audubon	*	*	*	Monroe	*	*	*	
	Clarke	*	*	*	Osceola	*	*	*	
	Davis	*	*	*	Palo Alto	*	*	*	
	Decatur	*	*	*	Pocahontas	*	*	*	
	Fremont	*	*	*	Ringgold	*	*	*	
	Greene	*	*	*	Taylor	*	*	*	
	Howard	*	*	*	Van Buren	*	*	*	
	Humboldt	*	*	*	Wayne	*	*	*	
	Ida	*	*	*	Worth	*	*	*	
					Total	13	1.5	1.3	
	Counties with Average Population 10,000 – 20,000	Allamakee	*	*	*	Hardin	*	*	*
		Appanoose	*	*	*	Iowa	*	*	*
Buena Vista		*	*	*	Jefferson	*	*	*	
Butler		*	*	*	Keokuk	*	*	*	
Calhoun		*	*	*	Kossuth	*	*	*	
Cass		*	*	*	Louisa	*	*	*	
Cedar		*	*	*	Lyon	*	*	*	
Cherokee		*	*	*	Mitchell	*	*	*	
Chickasaw		*	*	*	Montgomery	*	*	*	
Clay		*	*	*	O'Brien	*	*	*	
Clayton		*	*	*	Page	*	*	*	
Crawford		*	*	*	Poweshiek	*	*	*	
Delaware		*	*	*	Sac	*	*	*	
Dickinson		*	*	*	Shelby	*	*	*	
Emmet		*	*	*	Tama	*	*	*	
Floyd		*	*	*	Union	*	*	*	
Franklin		*	*	*	Winnebago	*	*	*	
Hamilton		*	*	*	Wright	*	*	*	
Hancock		*	*	*	Total	40	1.5	1.6	
Counties with Average Population > 20,000	Boone	*	*	*	Lee	7	3.8	4.1	
	Buchanan	*	*	*	Mahaska	5	4.5	5.2	
	Carroll	*	*	*	Marion	5	3.1	3.2	
	Cerro Gordo	9	4.0	3.7	Marshall	6	3.1	3.3	
	Clinton	5	2.0	2.2	Muscatine	7	3.3	3.4	
	Des Moines	*	*	*	Plymouth	*	*	*	
	Fayette	*	*	*	Sioux	*	*	*	
	Henry	*	*	*	Wapello	*	*	*	
	Jackson	*	*	*	Webster	12	6.1	6.7	
	Jasper	7	3.8	3.7	Winnesiek	*	*	*	
				Total	88	2.8	2.9		
MSA Counties	Benton	*	*	*	Linn	49	4.9	4.9	
	Black Hawk	20	3.2	3.4	Madison	*	*	*	
	Bremer	*	*	*	Mills	*	*	*	
	Dallas	*	*	*	Polk	75	3.8	3.7	
	Dubuque	8	1.8	2.0	Pottawattamie	15	3.4	3.5	
	Grundy	*	*	*	Scott	33	4.1	4.1	
	Guthrie	*	*	*	Story	6	1.5	1.9	
	Harrison	*	*	*	Warren	6	2.8	3.1	
	Johnson	26	4.3	4.5	Washington	*	*	*	
	Jones	*	*	*	Woodbury	20	3.9	4.1	
					Total	276	3.4	3.4	
State Total	417	2.8	2.9						

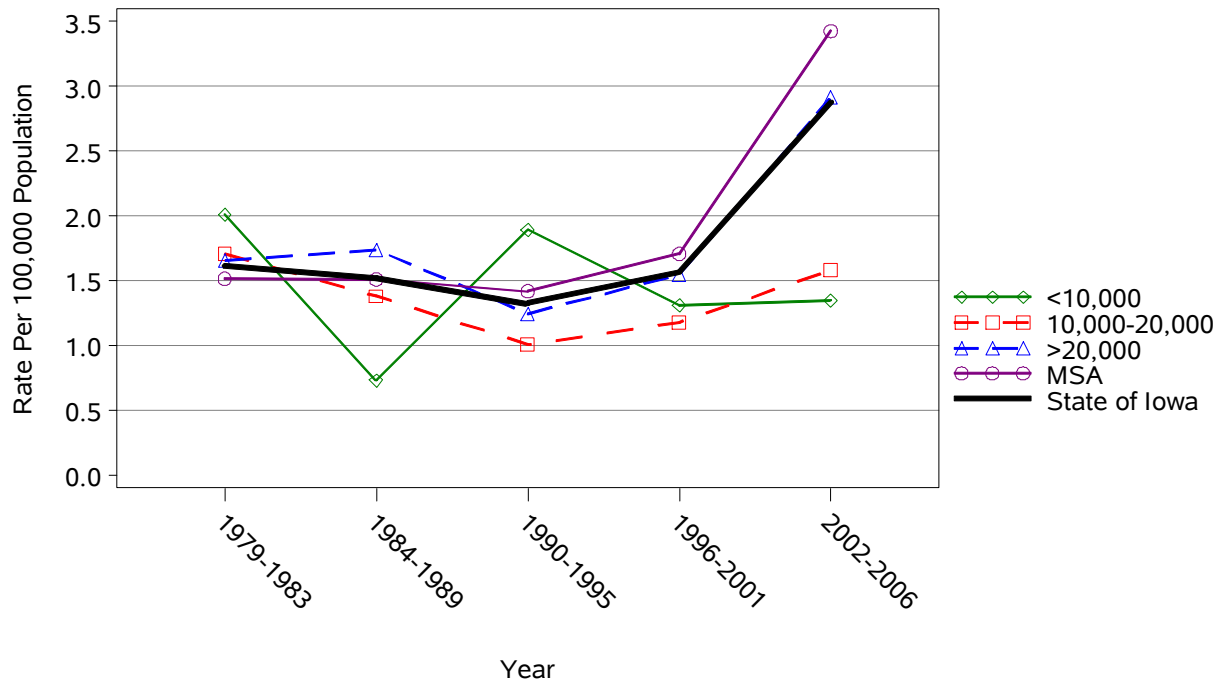
¹Rates per 100,000 Population²Adjusted to Year 2000 PopulationSource: Iowa Department of Public Health via the State Health Registry of Iowa
* represents a count less than 5

Poisoning Mortality by County Group 1979-2006

Crude Rates



Age-Adjusted Rates



Burns Mortality 2002-2006

	County	#	Crude ¹	Adjusted ^{1,2}	County	#	Crude ¹	Adjusted ^{1,2}	
Counties with Average Population < 10,000	Adair	*	*	*	Lucas	*	*	*	
	Adams	*	*	*	Monona	*	*	*	
	Audubon	*	*	*	Monroe	*	*	*	
	Clarke	*	*	*	Osceola	*	*	*	
	Davis	*	*	*	Palo Alto	*	*	*	
	Decatur	*	*	*	Pocahontas	*	*	*	
	Fremont	*	*	*	Ringgold	*	*	*	
	Greene	*	*	*	Taylor	*	*	*	
	Howard	*	*	*	Van Buren	*	*	*	
	Humboldt	*	*	*	Wayne	*	*	*	
	Ida	*	*	*	Worth	*	*	*	
					Total	14	1.6	1.6	
	Counties with Average Population 10,000 – 20,000	Allamakee	*	*	*	Hardin	*	*	*
		Appanoose	*	*	*	Iowa	*	*	*
Buena Vista		*	*	*	Jefferson	*	*	*	
Butler		*	*	*	Keokuk	*	*	*	
Calhoun		*	*	*	Kossuth	*	*	*	
Cass		*	*	*	Louisa	*	*	*	
Cedar		*	*	*	Lyon	*	*	*	
Cherokee		*	*	*	Mitchell	*	*	*	
Chickasaw		*	*	*	Montgomery	*	*	*	
Clay		*	*	*	O'Brien	*	*	*	
Clayton		*	*	*	Page	*	*	*	
Crawford		*	*	*	Poweshiek	*	*	*	
Delaware		*	*	*	Sac	*	*	*	
Dickinson		*	*	*	Shelby	*	*	*	
Emmet		*	*	*	Tama	*	*	*	
Floyd		*	*	*	Union	*	*	*	
Franklin		*	*	*	Winnebago	*	*	*	
Hamilton		*	*	*	Wright	*	*	*	
Hancock		*	*	*	Total	28	1.1	0.8	
Counties with Average Population > 20,000	Boone	*	*	*	Lee	*	*	*	
	Buchanan	*	*	*	Mahaska	*	*	*	
	Carroll	*	*	*	Marion	*	*	*	
	Cerro Gordo	*	*	*	Marshall	*	*	*	
	Clinton	7	2.8	2.6	Muscatine	5	2.4	2.5	
	Des Moines	*	*	*	Plymouth	*	*	*	
	Fayette	*	*	*	Sioux	*	*	*	
	Henry	*	*	*	Wapello	*	*	*	
	Jackson	*	*	*	Webster	*	*	*	
	Jasper	5	2.7	2.3	Winnesiek	*	*	*	
				Total	48	1.5	1.3		
MSA Counties	Benton	*	*	*	Linn	*	*	*	
	Black Hawk	*	*	*	Madison	*	*	*	
	Bremer	*	*	*	Mills	*	*	*	
	Dallas	*	*	*	Polk	9	0.5	0.5	
	Dubuque	*	*	*	Pottawattamie	*	*	*	
	Grundy	*	*	*	Scott	8	1.0	1.0	
	Guthrie	*	*	*	Story	5	1.2	1.2	
	Harrison	*	*	*	Warren	*	*	*	
	Johnson	5	0.8	1.1	Washington	*	*	*	
	Jones	*	*	*	Woodbury	*	*	*	
				Total	53	0.7	0.6		
State Total	143	1.0	0.9						

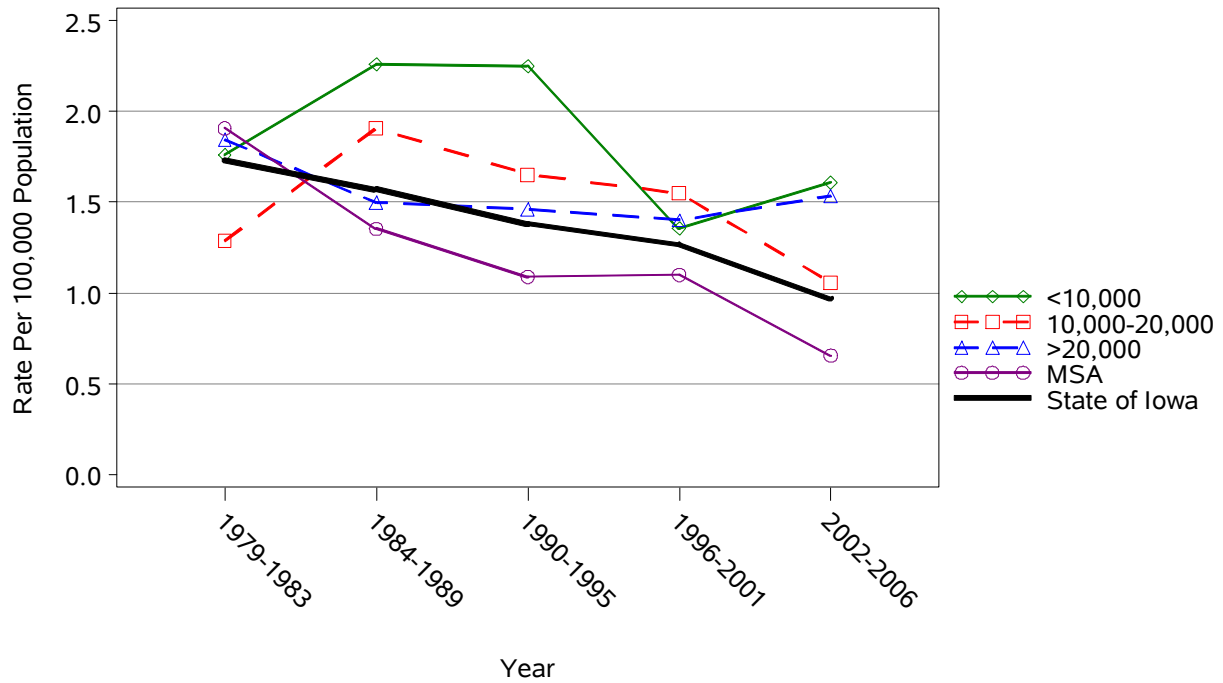
¹Rates per 100,000 Population²Adjusted to Year 2000 Population

Source: Iowa Department of Public Health via the State Health Registry of Iowa

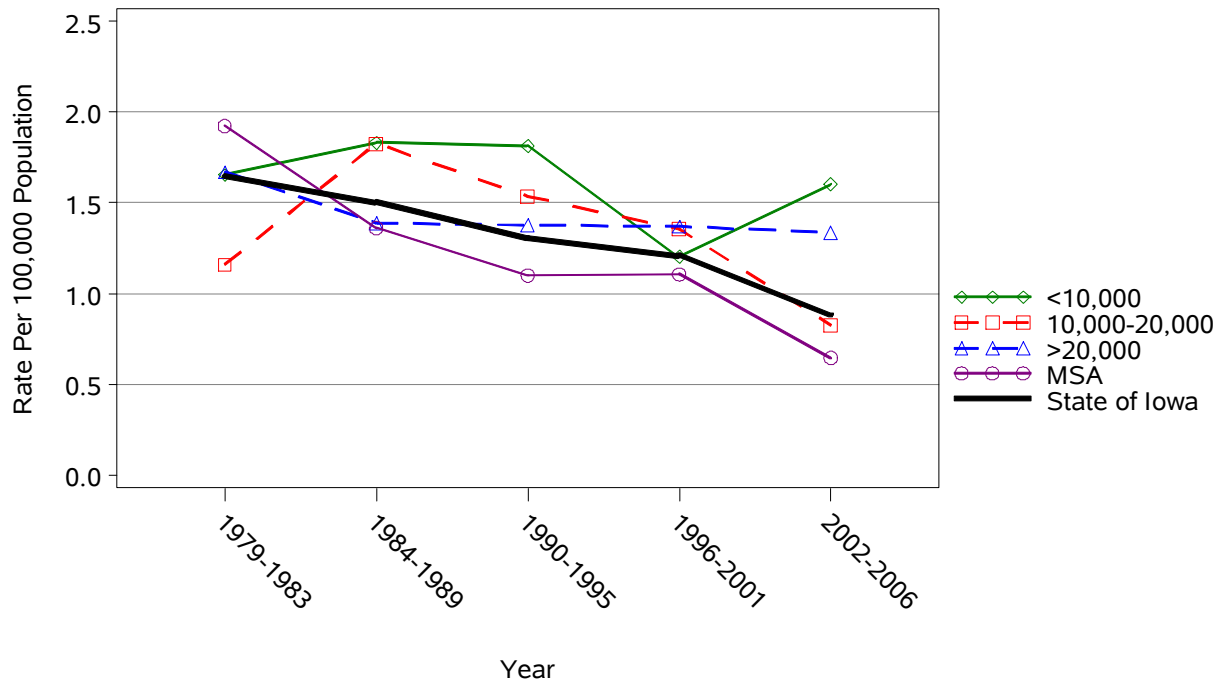
* represents a count less than 5

Burns Mortality by County Group 1979-2006

Crude Rates



Age-Adjusted Rates



Drowning Mortality 2002-2006

	County	#	Crude ¹	Adjusted ^{1,2}	County	#	Crude ¹	Adjusted ^{1,2}
Counties with Average Population < 10,000	Adair	*	*	*	Lucas	*	*	*
	Adams	*	*	*	Monona	*	*	*
	Audubon	*	*	*	Monroe	*	*	*
	Clarke	*	*	*	Osceola	*	*	*
	Davis	*	*	*	Palo Alto	*	*	*
	Decatur	*	*	*	Pocahontas	*	*	*
	Fremont	*	*	*	Ringgold	*	*	*
	Greene	*	*	*	Taylor	*	*	*
	Howard	*	*	*	Van Buren	*	*	*
	Humboldt	*	*	*	Wayne	*	*	*
	Ida	*	*	*	Worth	*	*	*
					Total	12	1.4	1.5
	Counties with Average Population 10,000 – 20,000	Allamakee	*	*	*	Hardin	*	*
Appanoose		*	*	*	Iowa	*	*	*
Buena Vista		*	*	*	Jefferson	*	*	*
Butler		*	*	*	Keokuk	*	*	*
Calhoun		*	*	*	Kossuth	*	*	*
Cass		*	*	*	Louisa	*	*	*
Cedar		*	*	*	Lyon	*	*	*
Cherokee		*	*	*	Mitchell	*	*	*
Chickasaw		*	*	*	Montgomery	*	*	*
Clay		*	*	*	O'Brien	*	*	*
Clayton		*	*	*	Page	*	*	*
Crawford		*	*	*	Poweshiek	*	*	*
Delaware		*	*	*	Sac	*	*	*
Dickinson		*	*	*	Shelby	*	*	*
Emmet		*	*	*	Tama	*	*	*
Floyd		*	*	*	Union	*	*	*
Franklin		*	*	*	Winnebago	*	*	*
Hamilton		*	*	*	Wright	*	*	*
Hancock	*	*	*	Total	22	0.8	0.9	
Counties with Average Population > 20,000	Boone	*	*	*	Lee	*	*	*
	Buchanan	*	*	*	Mahaska	*	*	*
	Carroll	*	*	*	Marion	*	*	*
	Cerro Gordo	*	*	*	Marshall	*	*	*
	Clinton	*	*	*	Muscatine	*	*	*
	Des Moines	*	*	*	Plymouth	*	*	*
	Fayette	*	*	*	Sioux	*	*	*
	Henry	*	*	*	Wapello	*	*	*
	Jackson	*	*	*	Webster	*	*	*
	Jasper	*	*	*	Winneshek	*	*	*
				Total	38	1.2	1.2	
MSA Counties	Benton	*	*	*	Linn	11	1.1	1.2
	Black Hawk	5	0.8	0.8	Madison	*	*	*
	Bremer	*	*	*	Mills	*	*	*
	Dallas	*	*	*	Polk	13	0.7	0.6
	Dubuque	*	*	*	Pottawattamie	*	*	*
	Grundy	*	*	*	Scott	6	0.8	0.8
	Guthrie	*	*	*	Story	*	*	*
	Harrison	*	*	*	Warren	*	*	*
	Johnson	*	*	*	Washington	*	*	*
	Jones	*	*	*	Woodbury	7	1.4	1.3
				Total	68	0.8	0.8	
State Total	140	0.9	1.0					

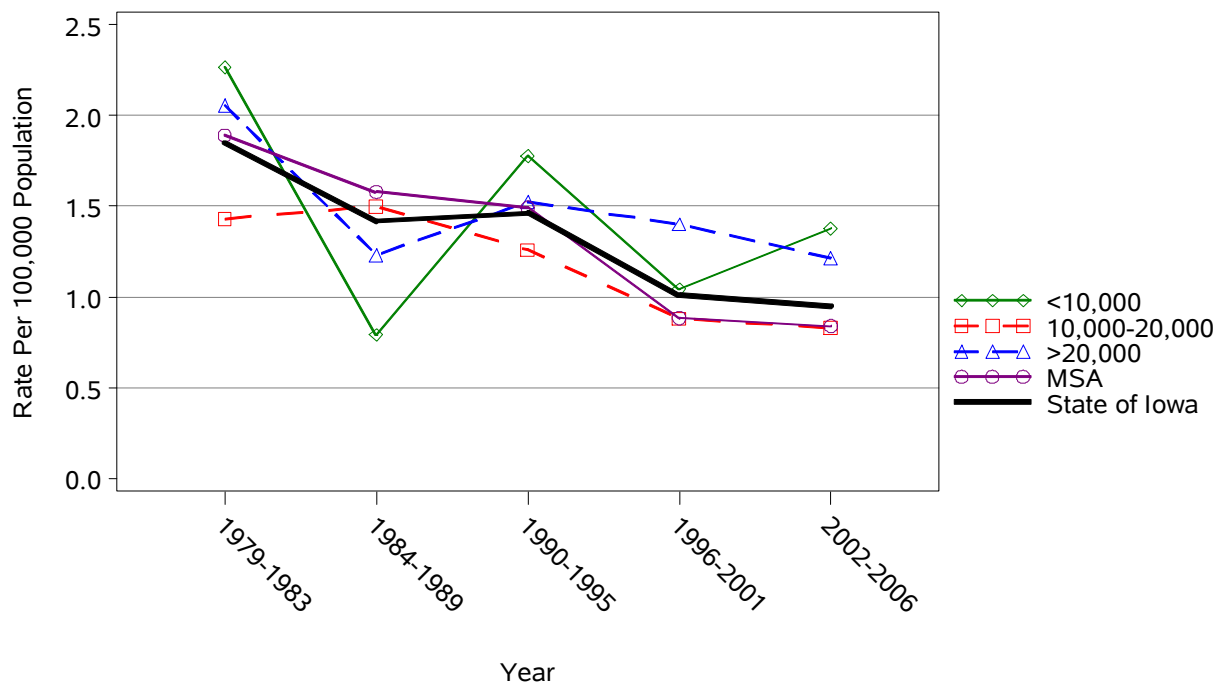
¹Rates per 100,000 Population²Adjusted to Year 2000 Population

Source: Iowa Department of Public Health via the State Health Registry of Iowa

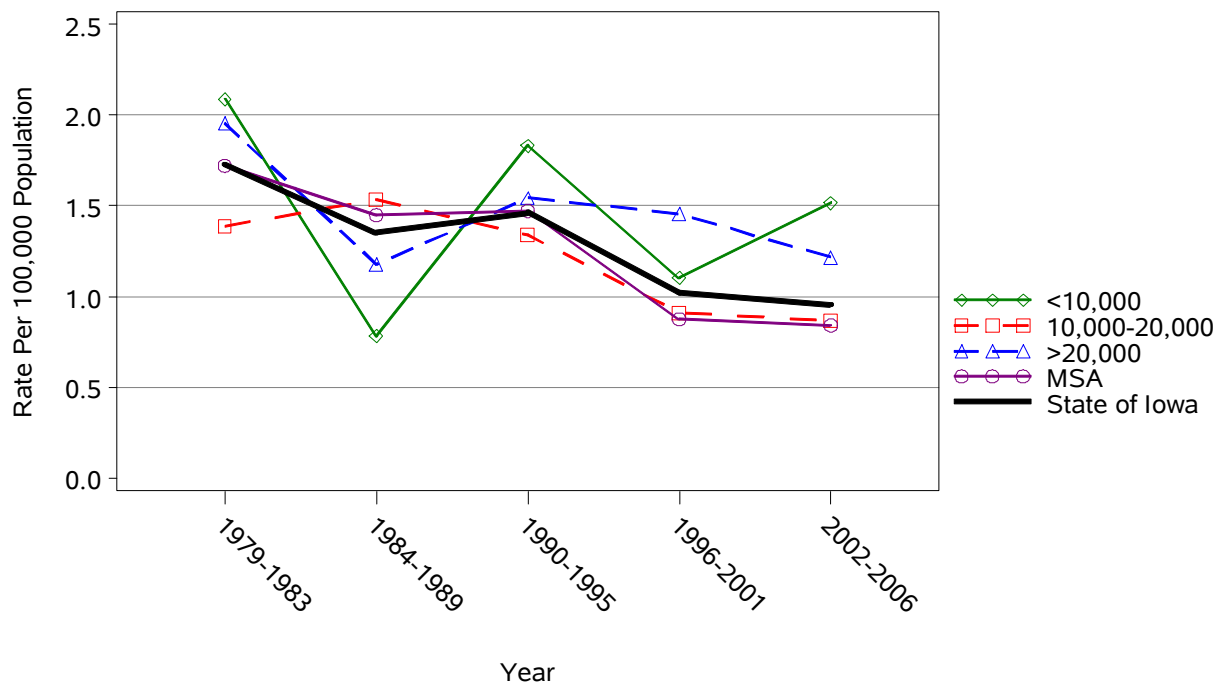
* represents a count less than 5

Drowning Mortality by County Group 1979-2006

Crude Rates



Age-Adjusted Rates



All Other Unintentional Mortality 2002-2006

	County	#	Crude ¹	Adjusted ^{1,2}	County	#	Crude ¹	Adjusted ^{1,2}	
Counties with Average Population < 10,000	Adair	5	12.8	6.0	Lucas	5	10.5	5.1	
	Adams	*	*	*	Monona	6	12.6	4.6	
	Audubon	*	*	*	Monroe	*	*	*	
	Clarke	*	*	*	Osceola	6	17.8	12.8	
	Davis	6	14.1	12.3	Palo Alto	7	14.5	9.0	
	Decatur	*	*	*	Pocahontas	*	*	*	
	Fremont	*	*	*	Ringgold	*	*	*	
	Greene	5	10.1	3.8	Taylor	5	15.0	7.4	
	Howard	*	*	*	Van Buren	9	23.4	16.3	
	Humboldt	*	*	*	Wayne	*	*	*	
	Ida	6	16.4	8.6	Worth	*	*	*	
					Total	85	9.8	5.8	
	Counties with Average Population 10,000 – 20,000	Allamakee	9	12.4	7.5	Hardin	9	10.0	5.1
		Appanoose	8	12.0	8.1	Iowa	6	7.6	5.9
Buena Vista		7	7.0	6.5	Jefferson	*	*	*	
Butler		*	*	*	Keokuk	6	10.8	6.8	
Calhoun		5	9.6	8.0	Kossuth	9	11.2	8.8	
Cass		10	14.2	8.6	Louisa	8	13.3	8.3	
Cedar		7	7.8	6.4	Lyon	*	*	*	
Cherokee		8	13.1	9.0	Mitchell	9	16.6	11.3	
Chickasaw		7	11.2	8.1	Montgomery	6	10.7	5.1	
Clay		10	11.8	8.5	O'Brien	7	9.7	5.2	
Clayton		8	8.9	6.9	Page	*	*	*	
Crawford		11	13.2	8.8	Poweshiek	11	11.7	7.9	
Delaware		5	5.6	5.1	Sac	*	*	*	
Dickinson		5	6.1	4.5	Shelby	7	11.1	5.9	
Emmet		*	*	*	Tama	7	7.8	6.8	
Floyd		*	*	*	Union	7	11.7	9.2	
Franklin		*	*	*	Winnebago	5	8.9	5.9	
Hamilton		9	11.2	6.8	Wright	9	13.3	8.3	
Hancock		5	8.6	5.4	Total	245	9.2	6.4	
Counties with Average Population > 20,000		Boone	18	13.7	9.9	Lee	15	8.2	5.8
	Buchanan	8	7.7	6.1	Mahaska	7	6.3	5.4	
	Carroll	11	10.5	6.2	Marion	14	8.6	6.3	
	Cerro Gordo	25	11.2	8.1	Marshall	24	12.3	10.0	
	Clinton	16	6.5	5.6	Muscatine	14	6.7	6.2	
	Des Moines	15	7.3	5.1	Plymouth	16	13.0	10.3	
	Fayette	*	*	*	Sioux	8	5.0	3.8	
	Henry	13	12.9	12.5	Wapello	16	8.9	7.3	
	Jackson	6	6.0	4.6	Webster	24	12.3	9.0	
	Jasper	12	6.5	4.9	Winnesiek	10	9.5	7.5	
					Total	272-276	8.7-8.8	6.8	
MSA Counties	Benton	14	10.6	9.7	Linn	81	8.1	7.5	
	Black Hawk	55	8.7	7.2	Madison	8	10.9	9.5	
	Bremer	6	5.1	3.5	Mills	8	10.8	10.1	
	Dallas	13	5.3	5.6	Polk	104	5.2	5.3	
	Dubuque	25	5.5	4.8	Pottawattamie	21	4.7	4.2	
	Grundy	8	13.0	10.4	Scott	52	6.5	6.5	
	Guthrie	*	*	*	Story	20	4.9	5.0	
	Harrison	8	10.3	9.4	Warren	13	6.1	5.7	
	Johnson	18	3.0	3.9	Washington	15	14.2	7.6	
	Jones	14	13.8	12.0	Woodbury	30	5.9	5.3	
					Total	513-517	6.3-6.4	6.0	
State Total	1,115-23	7.5-7.6	6.2						

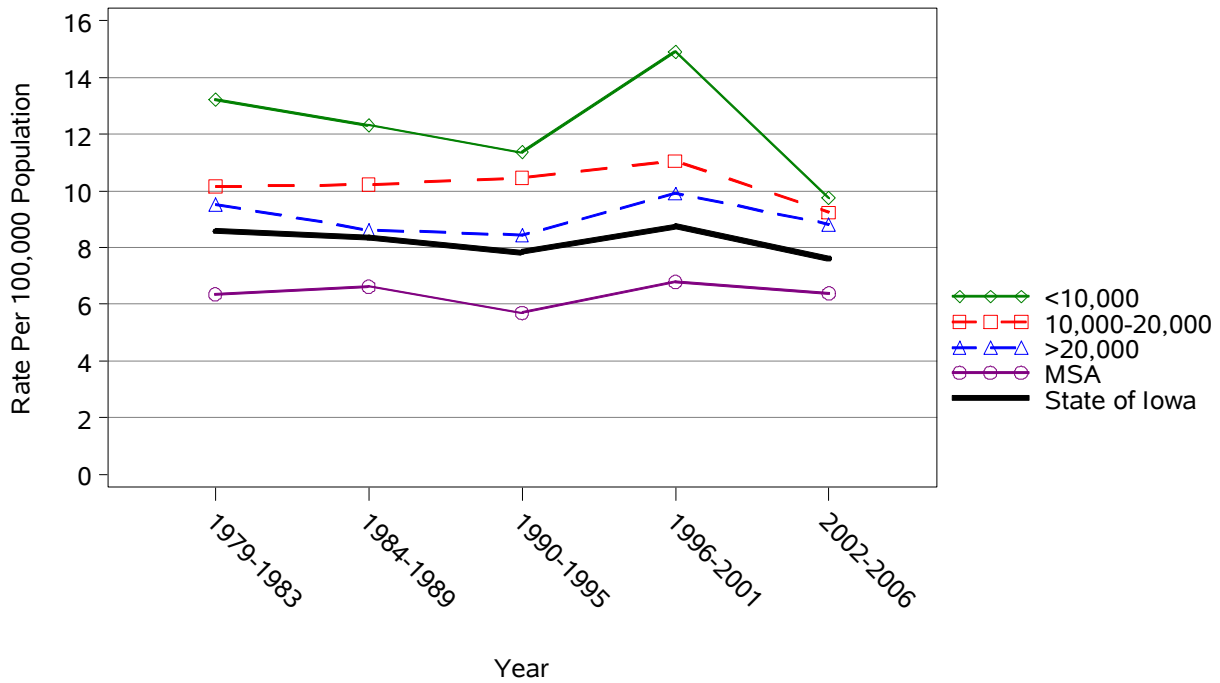
¹Rates per 100,000 Population²Adjusted to Year 2000 Population

Source: Iowa Department of Public Health via the State Health Registry of Iowa

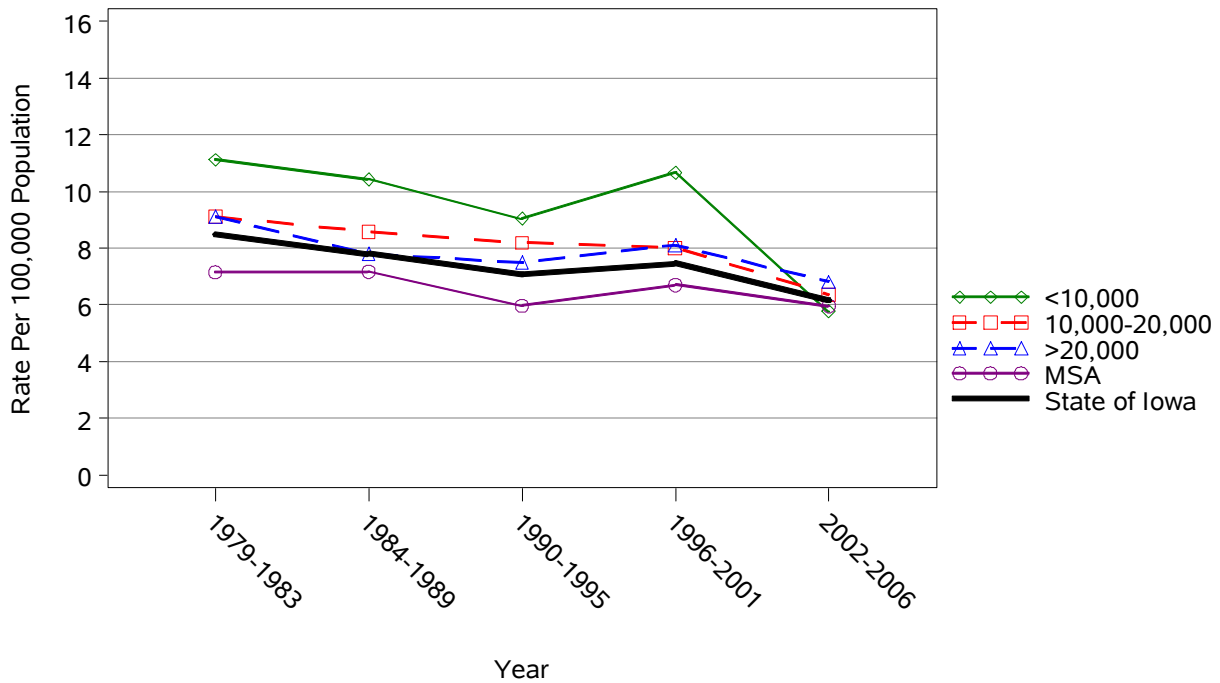
* represents a count less than 5

All Other Unintentional Mortality by County Group 1979-2006

Crude Rates



Age-Adjusted Rates



[This page has been intentionally left blank.]