

# The Course of Depression in Elderly Patients

*Timothy I. Mueller, M.D., Robert Kohn, M.D.*

*Nina Leventhal, B.A., Andrew C. Leon, Ph.D.*

*David Solomon, M.D., William Coryell, M.D.*

*Jean Endicott, Ph.D., George S. Alexopoulos, M.D.*

*Martin B. Keller, M.D.*

---

**Objective:** *Studies on the course of major depressive disorder (MDD) among elderly persons are limited to short periods of follow-up, seldom provide comparisons with younger cohorts, and raise other methodological concerns. Methods:* Utilizing 15 years of prospective data from the NIMH Collaborative Depression Study, the authors examined the index episode of MDD and the time until first observed recurrence in those who recovered for subjects in four age-groups defined by age at intake: 17-30, 31-50, 51-64, and 65-79 years. Assessments were conducted every 6 months for 5 years and annually thereafter. Survival analysis examined time until recovery and time to first recurrence. **Results:** Median time-to-recovery was similar for the four groups. Median time-to-first recurrence was significantly shorter for oldest versus the 51-64-year-old group but not the two other groups. The oldest age-group was distinguished from the younger groups by being more likely to be divorced/widowed/separated, to have primary depression, and to have a history of medical illness, particularly cardiovascular disease or cancer. There was no difference in the generally low levels of pharmacotherapy prescribed during the index episode or the subsequent well interval. **Conclusions:** Elderly patients with MDD may have a greater risk of recurrence than younger individuals. Low levels of treatment characterize the somatic treatment in all the study subjects, regardless of age-group. (Am J Geriatr Psychiatry 2004; 12:22-29)

---

A national crisis in geriatric mental health care is looming because of the anticipated growth of the population of people over the age of 65.<sup>1</sup> Research on major depressive disorder (MDD) in geriatric psychiatry has lagged behind that of younger adults. The need to better address issues regarding MDD is high-

lighted by evidence suggesting that the point prevalence for those over the age of 65, 4.4% in women and 2.7% in men, is considerably higher than estimates from earlier epidemiological studies.<sup>2-4</sup> Although MDD is highly prevalent, our knowledge about the long-term course of this disorder in elderly patients

---

Received September 16, 2002; revised February 27, 2003; accepted April 18, 2003. From Brown University School of Medicine, Department of Psychiatry and Human Behavior, Providence, RI (TIM,RK,NL,DS,MBK), Weill Medical College of Cornell University, Department of Psychiatry, New York, NY (ACL,GSA), University of Iowa College of Medicine, Iowa City, IA (WC), and College of Physicians and Surgeons, Columbia University, New York, NY (JE). Send correspondence to Timothy I. Mueller, Brown University Medical School, Department of Psychiatry and Human Behavior, c/o Butler Hospital, 345 Blackstone Blvd, Providence, RI 02906, e-mail: Timothy\_Mueller@brown.edu

Copyright © 2004 American Association for Geriatric Psychiatry

is limited, and only a few studies have examined this issue prospectively beyond 2 years. Also, less is known about how the course of MDD in elderly patients differs from that of younger adults.<sup>5</sup>

Much of the literature published between the years 1955 and 1994, on the course of MDD among elderly patients age 60 and older, with study sample sizes of at least 20 and a minimum follow-up over 12 months, was reviewed in a metaanalysis.<sup>6</sup> Cole and Bellavance's review raised serious methodological concerns about many of those studies. None of the studies described their referral patterns. Few studies defined criteria for assignment into categories of recovered or not. Most of the studies did not use systematic assessment or follow-up. The follow-up periods were typically 1 year, which limits the knowledge about the subsequent course. Many of the hospital- or clinic-based studies provided short-term follow-up data of 24 months or less,<sup>7-14</sup> and six had follow-up over 2 years, but none longer than 4 years.<sup>15-20</sup> Among those six reports, 27.3% of the depressed elderly patients were well at the end of follow-up; 32.5% had a recurrence after recovery; and 14.2% remained continuously ill. Three of the five community-based studies<sup>21-25</sup> were longer than 2 years, reporting 19% of the depressed elderly patients as being well and 27.0% remaining continuously ill.<sup>23-25</sup>

Since that review, several other investigators using the criteria suggested by Cole and Bellavance have examined this issue in treated samples.<sup>26-34</sup> Only two clinically-based studies were greater than 12 months in duration. Alexopoulos et al.<sup>27</sup> examined recovery in individuals over the age of 63 during a 2-year period and found that 29% did not recover. Stek et al.<sup>33</sup> obtained follow-up data on 155 individuals discharged from a psychiatric hospital with a diagnosis of MDD; of those still living 6 to 8 years after the index episode, only 33% were described as doing well. A number of additional studies have been based on community samples, examining the course of depression in elderly patients. Three studies ranging from 2.6 to 5 years of follow-up with depressed subjects found that the rate of recovery ranged from 46% to 57%.<sup>29-31</sup> The Longitudinal Aging Study, Amsterdam has provided data on 6 years of follow-up of a cohort of 277 depressed subjects older than 55 years.<sup>34</sup> This study found that 32% had a severe chronic course, and 44% had a fluctuating course, on the basis of the Center for Epidemiological Studies-Depression

scale (CES-D) as a measure of severity and the Diagnostic Interview Schedule to confirm diagnosis.

Few of these studies have included a younger cohort as a comparison group. Meats et al.<sup>11</sup> found that the proportion of those who were well at the end of 12 months was higher in elderly patients. Brodaty et al.<sup>16</sup> found that, compared with a younger group, recovery rates among depressed elderly patients continued to rise during the 45 months of follow-up. Tuma<sup>26</sup> and Alexopoulos et al.<sup>27</sup> also noted a similar outcome between older and younger patients.

Our report relies on the strengths of the Collaborative Depression Study (CDS), which includes specified recruitment criteria, a wide range of subject ages, systematic assessment using standardized and well accepted instruments, up to 15 years of follow-up, and frequent short-interval prospective interviews, to examine the course of MDD in elderly patients. This study overcomes many of the methodological issues raised by earlier reviews. We examined the course of the index episode of MDD and the well period in those who recovered and the treatment received in subjects divided into four groups on the basis of their age at intake: 17-30, 31-50, 51-64, and 65-79 years of age.

---

## METHODS

### Subjects

Between the years 1978 and 1981, a total of 955 patients who sought psychiatric treatment for a major mood disorder at one of five academic medical centers in the United States (Boston, Chicago, Iowa City, New York City, and St. Louis) were entered into a prospective, observational follow-up study, the NIMH Collaborative Study on the Psychobiology of Depression (CDS). This report examines the first 15 years of follow-up data on the 431 subjects who were diagnosed with MDD at intake and who also had no previous history of mania, hypomania, schizoaffective disorder, chronic intermittent depressive disorder, or minor depression of at least 2 years' duration at intake. Since the subjects age 65 and over, who are the focus of this report, were all inpatients, we further limited the sample to only subjects who were recruited from the inpatient setting in order to limit sources of bias. This resulted in a subsample that

## Course of Depression

numbered 332 subjects. We obtained written informed consent from the subjects after they received a complete description of the study.

### Assessments

The details of the assessment procedures are described elsewhere.<sup>35,36</sup> All subjects were interviewed at intake by trained research staff using the Schedule for Affective Disorders and Schizophrenia (SADS).<sup>37</sup> This information was combined with medical records to make diagnoses according to Research Diagnostic Criteria (RDC).<sup>38</sup> RDC criteria for MDD are essentially identical to those for DSM-IV. We have maintained RDC diagnostic categories in the CDS to maintain consistency of method over the two decades of the project. In the RDC, the primary/secondary distinction is determined solely by the chronology of onset of the illness. Primary MDD in the RDC is defined according to the Feighner criteria, which state that MDD is primary as long as it began before any one of a defined list of non-affective disorders.<sup>39</sup> After intake, subjects were interviewed every 6 months for the first 5 years with the Longitudinal Interval Follow-up Evaluation (LIFE)<sup>40</sup> and every year thereafter with the Streamlined Longitudinal Interval Continuation Evaluation (SLICE). These follow-up instruments assess the level of psychopathology for each RDC major affective disorder (major depression, mania, schizoaffective mania, schizoaffective depression) on a 6-point scale called the Psychiatric Status Rating (PSR).<sup>36</sup> A rating of 1 denotes no symptoms of the disorders, and a 6 denotes full diagnostic criteria, with psychosis or severe impairment. In these subjects with MDD, recovery from MDD is defined as beginning with the first of 8 consecutive weeks of no or minimal symptoms (PSR 1 or 2, respectively). Until recovery occurs, a subject remains in an episode of MDD, at a level of psychopathology ranging from PSR 1 to PSR 6. The continuous string of PSR scores for MDD lasting up to 780 weeks (15 years) is the source of data for these analyses on the course of illness.

### Treatment

Weekly somatic antidepressant treatment was assessed retrospectively by the LIFE or SLICE. These detailed records of pharmacotherapy were combined by use of a 5-point summary scale called the Com-

posite Unipolar Antidepressant (CAD) scale, which quantifies all antidepressant somatotherapy, including electroconvulsive (ECT) and pharmacotherapy.<sup>40</sup> Equivalent dose ranges were established for each antidepressant. A CAD score of 0 means that no antidepressant somatic treatment was provided for that week. A CAD score of 1 is equal to a daily dose of 1 mg–99 mg imipramine or its equivalent. A CAD score of 2 is equal to a 100 mg–199 mg imipramine-equivalent; 3 equals 200 mg–299 mg imipramine-equivalent; and 4 equals 300 mg-or-more imipramine-equivalent. The study protocol did not influence the treatment provided by the patient's physician. We specifically looked at the extent of "adequate pharmacotherapy" during the intake episode and first prospectively-observed well period. "Adequate pharmacotherapy" was defined as receiving treatment at a CAD level of  $\geq 2$ . Psychotherapeutic treatments were not systematically assessed and are not included in these analyses.

### Statistical Methods

The outcomes of interest in these analyses were time-to-recovery from the intake episode of MDD and subsequent time until the occurrence (prospectively observed) of any major affective disorder (MDD, mania, schizoaffective mania, or depression). The comparisons of interest were the findings in the subsample that was 65–79 years of age at intake ( $N = 32$ ) compared with the three other age-groups (17–30 [ $N = 119$ ], 31–50 [ $N = 118$ ], and 51–64 [ $N = 63$ ]). The number of subjects in each group who, after recovery from their index episode of MDD, experienced the occurrence of a non-MDD affective disorder is small: (mania: 1, 1, 2, 0; schizoaffective mania: 0, 0, 0, 0; schizoaffective depression: 1, 0, 0, 0) in the 17–30, 31–50, 51–64, and 65–79 age-groups, respectively). Survival analysis was used to analyze time until recovery from the intake episode and, in those who recovered, time to first prospectively-observed recurrence during the follow-up.<sup>41</sup> In the case of the intake episode of MDD, the survival time represents the "time until recovery," defined as the number of consecutive weeks from intake into the study during which the subject continued to show symptoms of MDD. A survival interval terminated in one of two ways: 1) an episode resolved, or 2) no resolution of episode by the time of final assessment. The latter

subjects were classified as censored in the survival analysis. The Kaplan-Meier product limit was used to estimate the cumulative probability of recovery or recurrence.<sup>42</sup> Survival analysis accounts for varying lengths of follow-up and allows us to utilize all the data collected.<sup>43</sup> However, the analyses make no attributions about the cause of loss to follow-up status, but assumes that it was independent of the event of interest (i.e., recovery or recurrence, respectively).

Pearson chi-square and one-way analysis of variance (ANOVA) were used for univariate comparisons of the age-groups on clinical and demographic features. Where the data were ordinal categories (e.g., number episodes of MDD before intake) or failed a Levine test for homogeneity of variances, a Kruskal-Wallis chi-square test was utilized. A two-tailed alpha level of 0.05 was used for each statistical test. The post-hoc procedure described by Conover<sup>44</sup> was used for statistically significant Kruskal-Wallis tests, whereas Bonferroni-adjusted pairwise comparisons were used for significant chi-square and log-rank tests, and where the Bonferroni denominator was equal to the number of pairwise tests.

---

## RESULTS

Table 1 details the clinical and demographic characteristics of the four groups. The elderly group was significantly more likely than the younger groups to be widowed, separated, or divorced, to have three or more previous episodes compared to the youngest group, to have primary MDD (as defined in RDC as occurring before the onset of any one of a specified list of non-affective disorders, such as phobic disorder or alcoholism), and to have a history of cardiovascular and oncologic illnesses.

During the intake episode of MDD after entry into the study and during the first prospectively-observed well period, the proportion of subjects who received pharmacotherapy at a level  $\geq$  CAD 2 (100 mg–199 mg imipramine-equivalents) was quite low for all groups, with no statistically significant difference in the levels of treatment received (Table 2). These low levels of pharmacotherapy occurred in the context of a group of people who, as a whole, had a mean of five previous episodes of MDD.

## Course of Major Depressive Disorder

Figure 1 and Figure 2, respectively, present the survival curves for time-to-recovery from intake episode and time-to-recurrence in those who recovered. The median times-to-recovery for the four groups (shown in Figure 2) are similar (log-rank<sub>[3]</sub> = 2.35;  $p = 0.50$ ): 17–30-year-old group: 28 weeks (95% confidence interval [CI]: 16–38 weeks); 31–50-year-old group: 28 weeks (95% CI: 11–45 weeks); 51–64 year old group: 29 weeks (95% CI: 11–47 weeks); and 65–79 year old group: 12 weeks (95% CI: 1–23 weeks). For the subjects who recovered from the intake episode ( $N = 106$ , 104, 50, and 25, in the respective age-groups), we analyzed the time to the first prospectively observed occurrence of a major affective disorder. The median time-to-recurrence was significantly different among groups (log-rank<sub>[3]</sub> = 9.88;  $p < 0.02$ ): 17–30-year-old group: 118 weeks (95% CI: 69–167 weeks); 31–50-year-old group: 112 weeks (95% CI: 51–173 weeks); 51–64-year-old group: 293 weeks (95% CI: 64–522 weeks); and 65–79-year-old group: 90 weeks (95% CI: 29–151 weeks). Post-hoc analyses revealed that the only statistically significant difference was between the 51–64-year-old group and those 65–79 years old (log-rank<sub>[1]</sub> = 10.24;  $p < 0.008$ ), where the older group experienced a more rapid recurrence. Examination of Figure 1 and Figure 2 provides the proportion of subjects in the respective age-groups who remained continuously ill (Figure 1) or continuously well, once recovered (Figure 2), for the entire follow-up period.

---

## DISCUSSION

This study found that elderly patients, compared with younger groups, had a similar MDD course for time until recovery from the intake episode. However, older subjects experienced a recurrence after recovery more rapidly than the cohort of subjects between the ages of 51 and 64 years. Our study incorporates many of the criteria suggested by Cole and Bellavance<sup>6</sup> for prospective studies examining the course of MDD in elderly patients. The CDS offers the unique advantage of a long follow-up period relative to previous work. The CDS has specified selection criteria for entry into the study, minimum severity requirements, systematically applied assessment and follow-up, and clear definitions for assignment

## Course of Depression

into categories of recovered or not. Outcome measures were based on specified criteria, and all somatic treatment was recorded.

Despite these advances, the study was limited by the small sample of elderly subjects enrolled at intake; this also precluded a meaningful analysis of predictors of course. Since the study sample has aged since intake, future analyses will be able to incorporate greater numbers of elderly subjects, permitting us to examine clinical and demographic characteristics as predictors of course. Furthermore, since the study was not originally designed to examine the outcome of depression in elderly patients, measures of activities of daily-living functioning and cognitive status

were not included. Evaluations of these domains are planned to be included in future assessments. Using clinical samples that are not limited to first lifetime episode has been criticized because elderly individuals with multiple recurrences will have an increased chance of being included in the study; this bias was borne out in this report. In the future, as elderly patients' sample size grows, we will be able to control for this bias by including it as a variable in our predictor analyses. We looked only at people who presented to academic medical centers for treatment of moderate-to-severe MDD, and they may not represent a general group of geriatric people with MDD.

All subjects in this analysis, including the elderly

**TABLE 1. Intake clinical and demographic characteristics of four age-groups of Collaborative Depression Study subjects**

	Age 17–30 (N = 119)	Age 31–50 (N = 118)	Age 51–64 (N = 63)	Age 65–79 (N = 32)	Statistic <sub>[df]</sub>	p
Age, years, median (mean)	25 (25.5)	38 (38.3)	57 (57.0)	70 (69.3)		
Male sex, N (%)	56 (47%)	32 (27%)	30 (48%)	13 (41%)	$\chi^2_{[3]} = 12.2$	0.007 <sup>b</sup>
Marital status						
Married/living together, N (%)	35 (29%)	77 (65%)	37 (59%)	17 (53%)	$\chi^2_{[6]} = 80.6$	<0.001
Never married, N (%)	66 (56%)	12 (10%)	8 (13%)	3 (9%)		
Divorced/widowed/separated, N (%)	18 (15%)	29 (25%)	18 (28%)	12 (38%)		
Number of previous episodes of MDD, N (%)					$\chi^2_{[3]} = 15.0$ <sup>a</sup>	0.002 <sup>c</sup>
0	51 (43%)	36 (30%)	20 (32%)	7 (22%)		
1	35 (29%)	32 (27%)	11 (17%)	5 (15%)		
2	14 (12%)	21 (18%)	14 (22%)	6 (19%)		
3 or more	19 (16%)	29 (25%)	18 (29%)	14 (44%)		
Duration of MDD before intake, weeks, mean (SD)	69 (136)	78 (101)	66 (102)	83 (149)	$\chi^2_{[3]} = 5.9$ <sup>a</sup>	0.11
Ham-D before intake, mean (SD)	21.0 (7.4) <sup>i</sup>	21.3 (6.5) <sup>i</sup>	21.6 (7.4) <sup>g</sup>	23.4 (7.1) <sup>g</sup>	$F_{[3]} = 1.04$	0.38
GAS before intake, mean (SD)	40.8 (10.2)	40.9 (9.5) <sup>h</sup>	38.3 (10.8) <sup>g</sup>	38.9 (7.3)	$F_{[3]} = 1.25$	0.29
Primary depression at intake, N (%)	66 (56%)	65 (55%)	41 (65%)	27 (84%)	$\chi^2_{[3]} = 10.8$	0.013
Psychotic Symptoms at Intake, N (%)	17 (14%)	9 (8%)	10 (16%)	4 (13%)	$\chi^2_{[3]} = 3.6$	0.31
History of cardiovascular disease, intake, N (%)	17 (14%) <sup>g</sup>	26 (22%)	24 (38%)	16 (52%) <sup>g</sup>	$\chi^2_{[3]} = 25.0$	<0.001 <sup>d</sup>
History of cancer at intake, N (%)	1 (1%) <sup>g</sup>	6 (5%) <sup>g</sup>	5 (8%)	6 (19%) <sup>g</sup>	$\chi^2_{[3]} = 17.3$	<0.001 <sup>c</sup>
History of any other medical condition at intake N (%)	44 (37%)	65 (55%)	40 (64%)	16 (50%)	$\chi^2_{[3]} = 13.9$	<0.003 <sup>f</sup>

Notes: Medical diagnoses are not mutually exclusive. Other medical conditions include gastrointestinal, endocrine, rheumatologic, infectious, visual/hearing difficulties, hematologic, and neurologic disorders.

<sup>a</sup> Kruskal-Wallis chi-square test.

<sup>b</sup> Pairwise post-hoc comparisons: 17–30-year-old group: significantly more men than the 31–50-year-old group;  $\chi^2_{[1]} = 10.1$ ,  $p < 0.008$ .

<sup>c</sup> Pairwise post-hoc comparisons: 17–30-year-old group: significantly fewer episodes than each of the other groups,  $p < 0.008$ .

<sup>d</sup> Pairwise post-hoc comparisons: 65–79-year-old group significantly more likely than 17–30 and 31–50-year-old groups, and 51–64-year-old group significantly more likely than 17–30-year-old group,  $p < 0.008$ .

<sup>e</sup> Pairwise post-hoc comparisons: 65–79-year-old group significantly more likely than 17–30-year-old group,  $p < 0.008$ .

<sup>f</sup> Pairwise post-hoc comparisons: 17–30-year-old group significantly less likely than 31–50 and 51–64 groups,  $p < 0.008$ .

<sup>g</sup> one missing subject.

<sup>h</sup> two missing subjects.

<sup>i</sup> four missing subjects.

**TABLE 2. Pharmacotherapy characteristics of Collaborative Depression Study subjects during prospective follow-up**

	Age 17–30	Age 31–50	Age 51–64	Age 65–79	Statistic <sub>[df]</sub>	p
Adequate pharmacotherapy (CAD $\geq 2$ )						
During entire index episode, after intake, N/N-at-risk, (%)	47/119 (39%)	54/118 (46%)	28/63 (44%)	9/32 (28%)	$\chi^2_{[3]} = 3.661$	0.30
During well period, N/N-at-risk (%)	31/106 (29%)	38/104 (37%)	12/50 (24%)	10/25 (40%)	$\chi^2_{[3]} = 3.563$	0.31

Note: CAD: composite unipolar antidepressant scale.

group, received low levels of somatic antidepressant therapy. It has been shown that adequate treatment of elderly individuals with recurrent MDD markedly decreases the risk for recurrence and that long-term maintenance treatment is superior to placebo in reducing risk of recurrence.<sup>45-47</sup> These studies and ours suggest that the long-term outcome of MDD in elderly patients, as in younger adults, has a course characterized by recovery and recurrence. Whether or not optimal somatic and psychosocial treatments would ameliorate the course of this disorder in elderly patients cannot be answered by this study. Unfortunately, this study does not provide guidance for the clinician to make decisions about the approach to a specific patient; however, the evidence for a more rapid recurrence after recovery in elderly patients, compared with a younger control group, suggests that most elderly people with MDD, similar to those who are younger, will benefit from continued attention to their mood disorder even after apparent recovery.

This work was supported by a grant from the National Institute of Mental Health Collaborative Program on the Psychobiology of Depression—Clinical Studies (NIMH: 2R10 MH 25478-24), conducted with the participation of the following investigators: M.B. Keller, M.D. (Chairperson, Providence); W. Coryell, M.D. (Co-Chairperson, Iowa City); T.I. Mueller, M.D.; D.A. Solomon, M.D. (Providence); J. Fawcett, M.D.; W.A. Scheftner, M.D. (Chicago); W. Coryell, M.D.; J. Haley (Iowa City); J. Endicott, Ph.D.; A.C. Leon, Ph.D.; J. Loth, M.S.W. (New York); J. Rice, Ph.D.; and T. Reich, M.D. (St. Louis). Other contributors include H.S. Akiskal, M.D.; N.C. Andreasen, M.D., Ph.D.; P.J. Clayton, M.D.; J. Croughan, M.D.; R.M. A. Hirschfeld, M.D.; L. Judd, M.D.; M.M. Katz, Ph.D.; P.W. Lavori, Ph.D.; J.D. Maser, Ph.D.; M.T. Shea, Ph.D.; R.L. Spitzer, M.D.; M.A. Young, Ph.D. (deceased); G.L. Klerman, M.D.; E. Robins, M.D.; R.W. Shapiro, M.D.; and G. Winokur, M.D.

This manuscript has been reviewed by the Publication Committee of the Collaborative Depression Study and has its endorsement.

FIGURE 1. Survival analysis curve of time-until-recovery from index episode of major depression

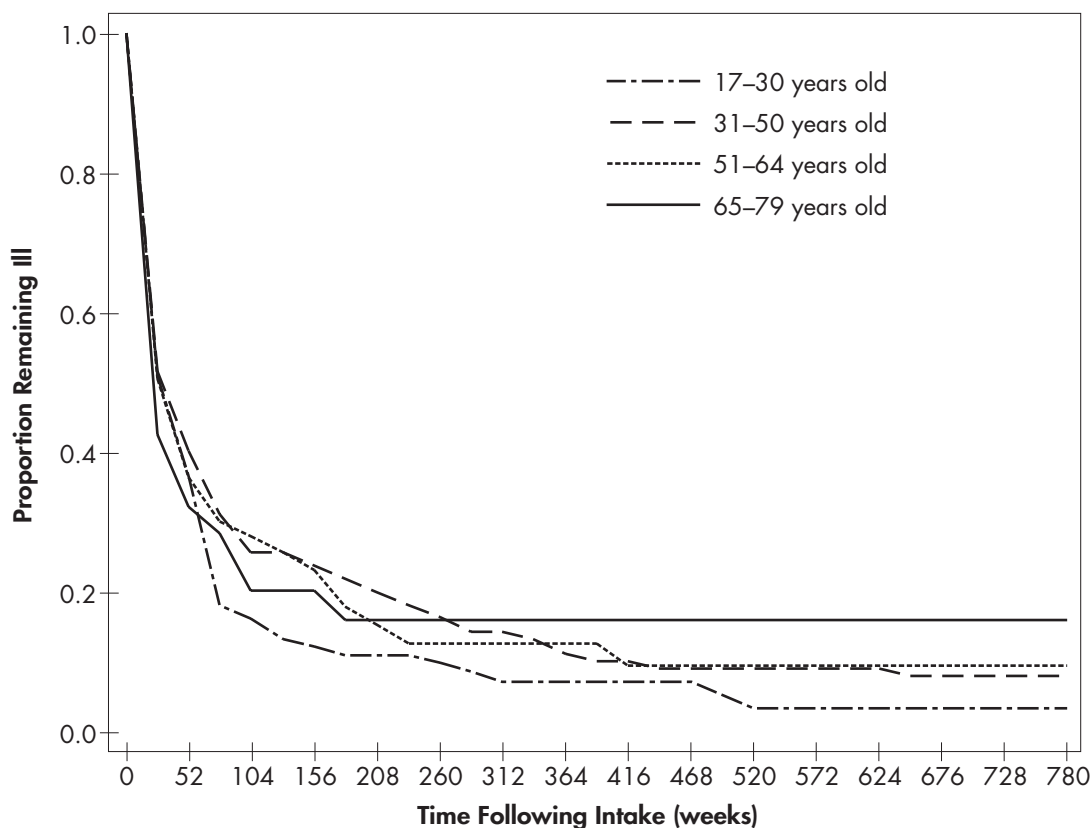
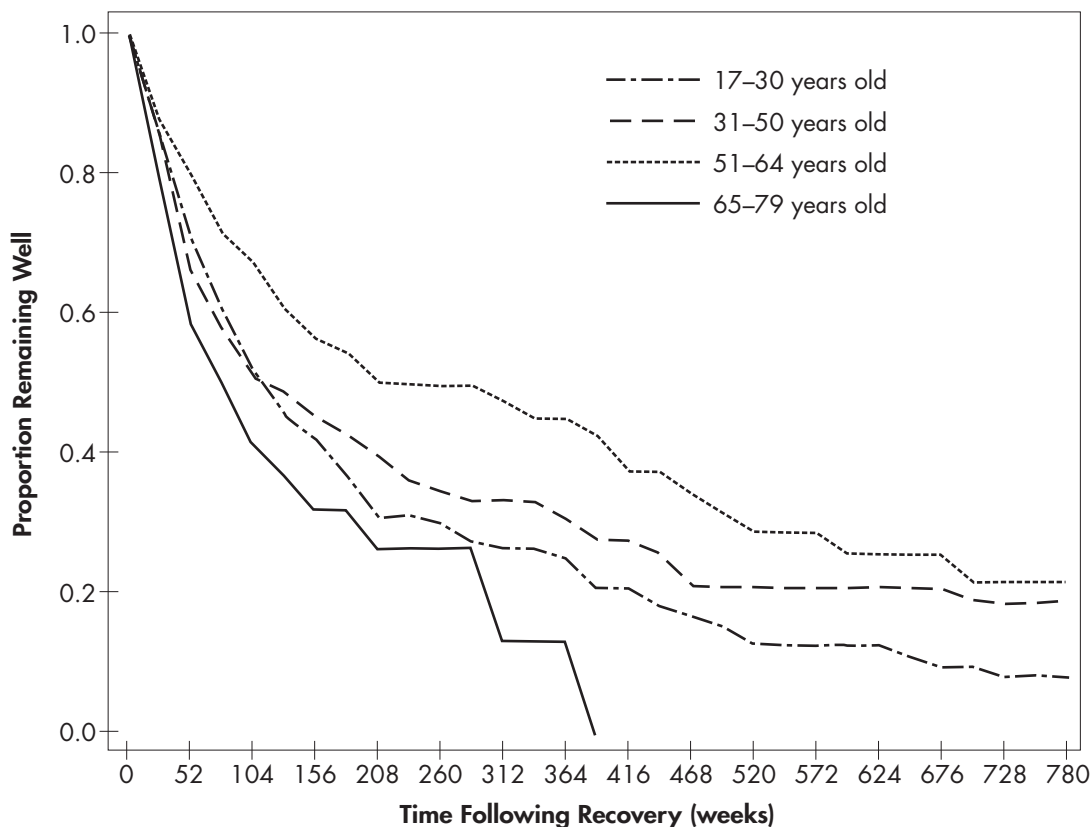


FIGURE 2. Survival analysis curve of time-until-recurrence after recovery from index episode of major depression



References

- Jeste DV, Alexopoulos GS, Bartels SJ, et al: Consensus statement on the upcoming crisis in geriatric mental health: research agenda for the next two decades. *Arch Gen Psychiatry* 1999; 56:848-853
- Steffens DC, Skoog I, Norton MC, et al: Prevalence of depression and its treatment in an elderly population. *Arch Gen Psychiatry* 2000; 57:601-607
- Blazer D, Hughes DC, George LK: The epidemiology of depression in an elderly community population. *Gerontologist* 1987; 27:281-287
- NIH Consensus Development Panel on Depression in Late-Life: diagnosis and treatment of depression in late life. *JAMA* 1992; 268:1018-1024
- Murphy E: The course and outcome of depression in late life, in *Diagnosis and Treatment of Depression in Late Life*. Edited by Schneider LS, Reynolds CF III, Lebowitz BD, et al. Washington, DC, American Psychiatric Press, 1994, pp 81-97
- Cole MG, Bellavance F: The prognosis of depression in old age. *Am J Geriatr Psychiatry* 1997; 5:4-14
- Kay D, Roth M, Hopkins B: Affective disorders in the senium: their association with organic cerebral degeneration. *J Ment Sci* 1955; 101:302-316
- Gordon WF: Elderly depressives: treatment and follow-up. *Can J Psychiatry* 1981; 26:110-113
- Murphy E: The prognosis of depression in old age. *Br J Psychiatry* 1983; 142:111-119
- Magni G, Palazzolo O, Bianchin G: The course of depression in elderly outpatients. *Can J Psychiatry* 1988; 33:21-24
- Meats P, Timol M, Jolley D: Prognosis of depression in the elderly. *Br J Psychiatry* 1991; 159:659-663
- Burvill PW, Hall WD, Stampher HG, et al: The prognosis of depression in old age. *Br J Psychiatry* 1991; 158:64-71
- Hinrichsen GA: Recovery and relapse from major depressive disorder in the elderly. *Am J Psychiatry* 1992; 149:1575-1579
- Baldwin RC, Benbow SM, Mariott A, et al: Depression in old age: a reconsideration of cerebral disease in relation to outcome. *Br J Psychiatry* 1993; 163:82-90
- Baldwin RC, Jolley DJ: The prognosis of depression in old age. *Br J Psychiatry* 1986; 149:574-583
- Brodsky H, Harris L, Peters K, et al: Prognosis of depression in the elderly: a comparison with younger patients. *Br J Psychiatry* 1993; 163:589-596
- Post F: The Significance of Affective Symptoms in Old Age. *Maudsley Monographs* 10. London, UK, Oxford University Press, 1962
- Post F: The management and nature of depressive illness in late life: a follow-through study. *Br J Psychiatry* 1972; 121:393-404
- Post F: The management and nature of depressive illness in late life: a follow-through study. *Br J Psychiatry* 1972; 121:393-404

20. Godber C, Rosenwinge H, Wilkinson D, et al: Depression in old age: prognosis after ECT. *Int J Geriatr Psychiatry* 1987; 2: 19-24
21. O'Conner DW, Politt PA, Roth M: Coexisting depression and dementia in a community survey of the elderly. *Int Psychogeriatr* 1990; 2:45-53
22. Kivela SL, Pahkala K, Laippala P: A one-year prognosis of dysthymic disorder and major depression in old age. *Int J Geriatr Psychiatry* 1991; 6:81-87
23. Ben-Aire O, Welman M, Teggin AF: The depressed elderly living in the community: a follow-up study. *Br J Psychiatry* 1990; 157:425-427
24. Copeland JR, Davidson IA, Dewey ME, et al: Alzheimer's disease, other dementias, depression, and pseudodementia: prevalence, incidence, and three-year outcome in Liverpool. *Br J Psychiatry* 1992; 161:230-239
25. Forsell E, Jorm AF, Winblad B: Outcome of depression in demented and non-demented elderly: observations from a three-year follow-up in a community-based study. *Int J Geriatr Psychiatry* 1994; 9:5-10
26. Tuma TA: Effect of age on the outcome of hospital-treated depression. *Br J Psychiatry* 1996; 168:76-81
27. Alexopoulos GS, Meyers BS, Young RC, et al: Recovery in geriatric depression. *Arch Gen Psychiatry* 1996; 53:305-312
28. van Marwijk H, Hermans J, Springer M: The prognosis of depressive disorder in elderly primary care patients, an exploratory observational study: course at 6 and 12 months. *Scand J Prim Health Care* 1998; 16:107-111
29. Kua EH: The depressed elderly Chinese living in the community: a five-year follow-up study. *Int J Geriatr Psychiatry* 1993; 8:427-430
30. Henderson AS, Korten AE, Jacomb PA, et al: The course of depression in the elderly: a longitudinal community-based study in Australia. *Psychol Med* 1997; 27:119-129
31. Livingston G, Watkin V, Milne B, et al: The natural history of depression and the anxiety disorders in older people: the Islington community study. *J Affect Disord* 1997; 46:225-262
32. Janzing J, Teunisse R, Bouwens P, et al: The course of depression in elderly subjects with and without dementia. *J Affect Disord* 2000; 57:49-54
33. Stek ML, Van Exel E, Van Tilburg W, et al: The prognosis of depression in old age: outcome six to eight years after clinical treatment. *Aging Ment Health* 2002; 6:282-285
34. Beekman AT, Geerlings SW, Deeg DJ, et al: The natural history of late-life depression: a six-year prospective study in the community. *Arch Gen Psychiatry* 2002; 59:605-611
35. Keller MB, Lavori PW, Lewis CE, et al: Predictors of relapse in major depressive disorder. *JAMA* 1983; 250:3299-3304
36. Mueller TI, Keller MB, Leon AC, et al: Recovery after five years of unremitted major depressive disorder. *Arch Gen Psychiatry* 1996; 53:794-799
37. Endicott J, Spitzer RL: A diagnostic interview: The Schedule for Affective Disorders and Schizophrenia. *Arch Gen Psychiatry* 1978; 35:837-844
38. Spitzer RL, Endicott J, Robins E: Research Diagnostic Criteria: rationale and reliability. *Arch Gen Psychiatry* 1978; 35:773-782
39. Feighner JP, Robins E, Guze SB, et al: Diagnostic criteria for use in psychiatric research. *Arch Gen Psychiatry* 1972; 26:57-63
40. Keller MB, Lavori PW, Friedman B, et al: The Longitudinal Interval Follow-up Evaluation: a comprehensive method for assessing outcome in prospective longitudinal studies. *Arch Gen Psychiatry* 1987; 44:540-548
41. Kalbfleish JD, Prentice RL: *The Statistical Analysis of Failure-Time Data*. New York, NY, Wiley, 1980
42. Kaplan EL, Meier P: Nonparametric estimation from incomplete observations. *J Am Stat Assoc* 1958; 53:457-481
43. Leon AC, Friedman RA, Sweeney JA, et al: Statistical issues in the identification of risk factors for suicidal behavior: the application of survival analysis. *Psychiatry Res* 1990; 31:99-108
44. Conover WJ: *Practical Nonparametric Statistics*, 2nd Edition. New York, Wiley, 1980
45. Flint AJ, Rifat SL: Maintenance treatment for recurrent depression in late life: a four-year outcome study. *Am J Geriatr Psychiatry* 2000; 8:112-116
46. Reynolds CF III, Frank E, Perel JM, et al: Nortriptyline and interpersonal psychotherapy as maintenance therapies for recurrent major depression: a randomized controlled trial in patients older than 59 years. *JAMA* 1999; 281:29-45
47. Alexopoulos GS, Myers BS, Young RC, et al: Executive dysfunction and long-term outcomes of geriatric depression. *Arch Gen Psychiatry* 2000; 57:285-289