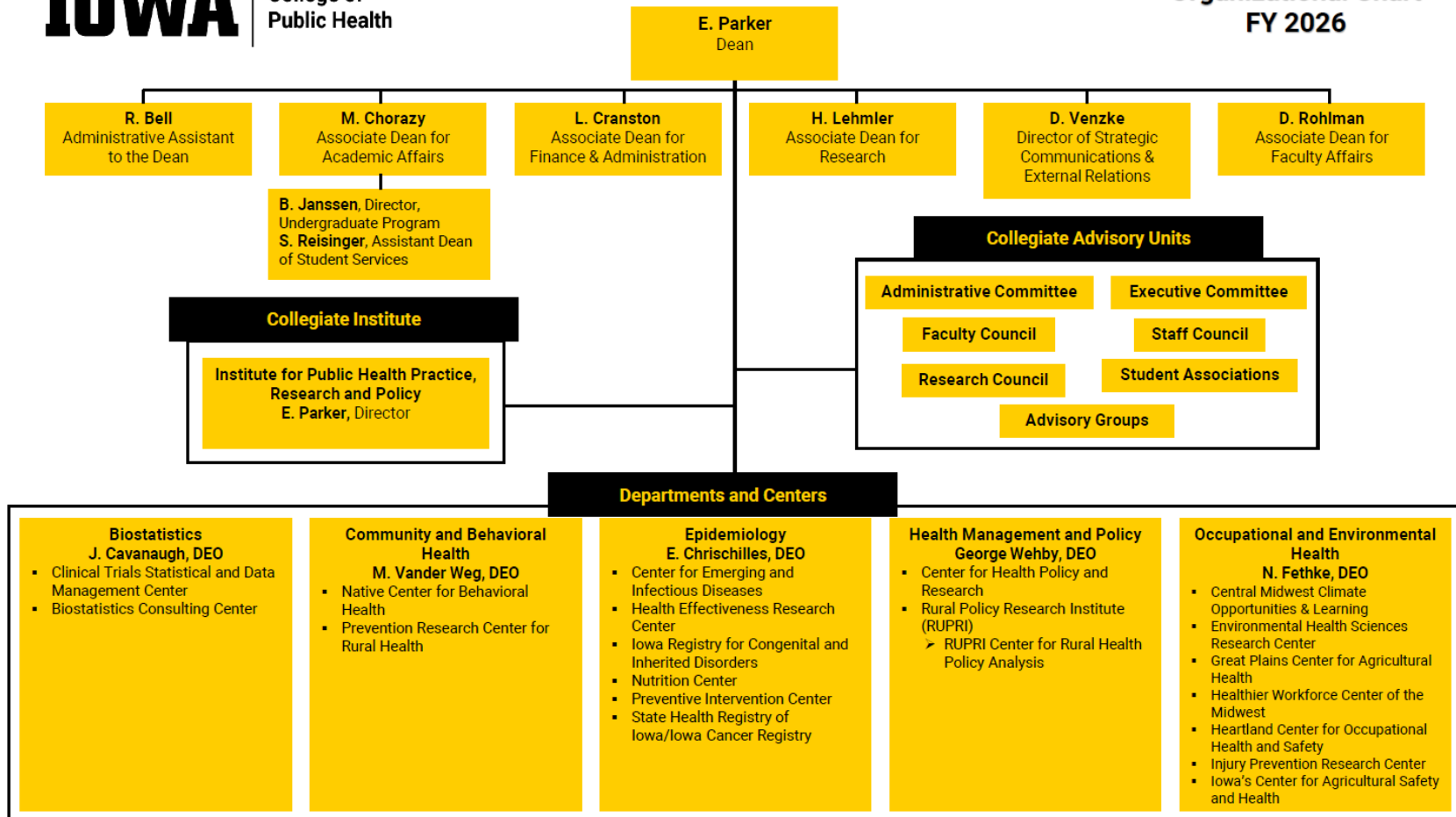


Fiscal Year 2026 Organizational Chart for the University of Iowa College of Public Health



College of
Public Health

Organizational Chart
FY 2026



Accessible Version

E. Parker, Dean

Office of the Dean

- R. Bell, Administrative Assistant to the Dean
- M. Chorazy, Associate Dean for Academic Affairs
 - Direct reports to Associate Dean for Academic Affairs:
 - B. Janssen, Director, Undergraduate Programs
 - S. Reisinger, Assistant Dean of Student Services
- L. Cranston, Associate Dean for Finance and Administration
- H. Lehmler, Associate Dean for Research
- D. Venzke, Director of Strategic Communications and External Relations
- D. Rohlman, Associate Dean for Faculty Affairs

Collegiate Institute

- Institute for Public Health Practice, Research and Policy, E. Parker, Director

Collegiate Advisory Units

- Administrative Committee
- Executive Committee
- Faculty Council
- Staff Council
- Research Council
- Student Associations
- Advisory Groups

Departments and Centers

- Biostatistics, J. Cavanaugh, DEO
 - Clinical Trials Statistical and Data Management Center
 - Biostatistics Consulting Center
- Community and Behavioral Health, M. Vander Weg, DEO
 - Native Center for Behavioral Health
 - Prevention Research Center for Rural Health
- Epidemiology, E. Chrischilles, DEO
 - Center for Emerging and Infectious Diseases
 - Health Effectiveness Research Center
 - Iowa Registry for Congenital and Inherited Disorders
 - Nutrition Center
 - Preventive Intervention Center
 - State Health Registry of Iowa/Iowa Cancer Registry
- Health Management and Policy, G. Wehby, DEO
 - Center for Health Policy and Research
 - Rural Policy Research Institute (RUPRI)
 - RUPRI Center for Rural Health Policy Analysis
- Occupational and Environmental Health, N. Fethke, DEO
 - Central Midwest Climate Opportunities & Learning
 - Environmental Health Sciences Research Center
 - Great Plains Center for Agricultural Health
 - Healthier Workforce Center of the Midwest
 - Heartland Center for Occupational Health and Safety
 - Injury Prevention Research Center
 - Iowa's Center for Agricultural Safety and Health