



**Institute of
Public Health
Research and Policy**

Milestone Report

January 2016 through June 2017



The Iowa Institute of Public Health Research and Policy

From the life-saving benefits of clean drinking water and smoke-free workplaces to the importance of effective health care services and safe vaccines, the power of public health is at work every day. The **Iowa Institute of Public Health Research and Policy (IIPHRP)** was approved by the Board of Regents and established to expand the scope, scale and impact of public health research at the University of Iowa. The IIPHRP fosters and nurtures collaborations, provides educational opportunities for faculty, staff and students and promotes the vital development, implementation, and grassroots application of cutting edge, public health research to address grand challenges in population health.

We are delighted to present this inaugural report to demonstrate the contributions of the IIPHRP during this initial startup period (January 2016 – June 2017). Although a young enterprise, the IIPHRP has built a strong portfolio of programs that have expanded partnerships, increased collaboration and provided opportunities for students, faculty and communities that did not otherwise exist. From our Executive-in-Residence program where industry experts are integrated into the life of the college through sharing knowledge and exploring new initiatives, to our policy fellowship program in which faculty are supported to translate their research to practice/policy, or to the INVEST health initiative, which aims to create new collaborations that improve health for those residing in low income neighborhoods, or the RUPRI program that researches and recommends policy for

rural populations, the IIPHRP is creating partnerships and alliances to address critical population health issues.

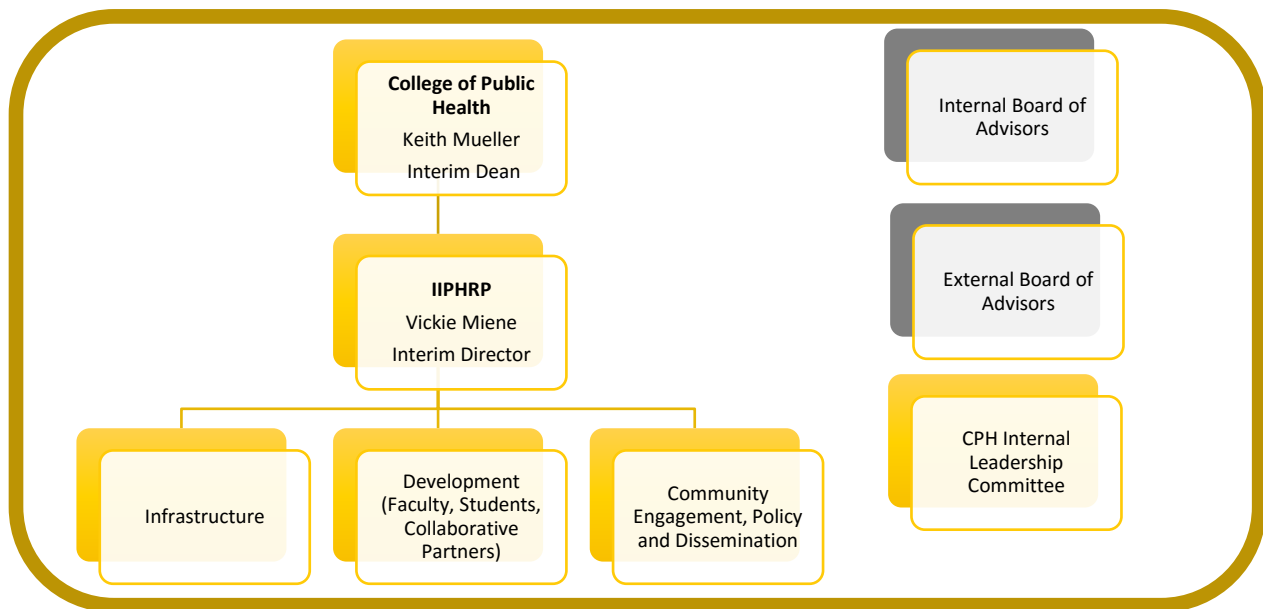
Public health builds the bridge between what we know and what we do. This is a two-way bridge: sometimes research informs/influences policy and sometimes policy informs/influences research. **The IIPHRP serves as a catalyst and creates intellectual communities that reach across disciplinary boundaries** by bringing together researchers, health organizations, providers, citizens, community leaders, private partners and policy makers to help shape and inform public health policy. Fostering and nurturing new collaborations, within and outside the University of Iowa helps us to expand the field of public health and to create meaningful opportunities for scientists, scholars, policy makers and communities to interact and network.

To build the bridge between what we know and what we do the IIPHRP emphasizes the goals of 1) expanding the scope, scale and impact of public health research, 2) expanding community engagement for public health issues through the creation of meaningful opportunities for all stakeholders, and 3) expanding education and training related to policy and research of public health issues.



As you peruse this report you will discover a broad array of passionate people who are working together to impact public health policy and research through the IIPHRP. Would you like to join us and get involved? Lets talk about the possibilities!

IIPHRP Leadership and Organizational Structure



Sue Curry



Keith Mueller



Vickie Miene

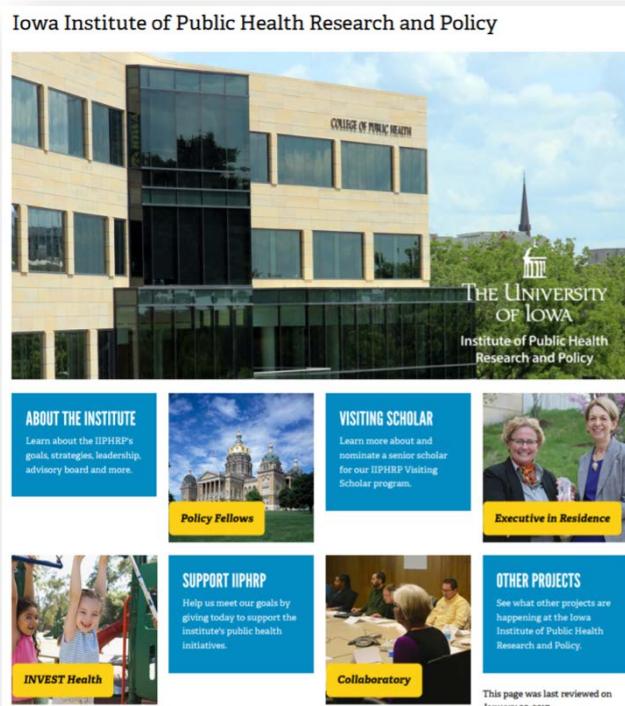
The IIPHRP organizationally reports to the Dean of the College of Public Health. The IIPHRP Interim Director manages and coordinates all the activities of the IIPHRP in consultation with the CPH Dean and with advice from regular interaction with the [CPH Internal Leadership Committee](#). The IIPHRP appreciates the guidance of two advisory boards. The IIPHRP [Internal Board of Advisors](#) is comprised of several University of Iowa leaders with an interest in public health, public policy and health sciences research. In addition, the [CPH Board of Advisors](#) consisting of representatives from the three Regent's Universities and prominent public health researchers and industry experts provide consultation to the IIPHRP. Both advisory boards provide guidance regarding the strategic objectives, annual achievements and objective and rigorous review of the IIPHRP. Membership of the above-mentioned groups can be found in the [IIPHRP Affiliate](#) section of this report.

Dr. Sue Curry envisioned the IIPHRP with her CPH colleagues, and served as the Dean of the College of Public Health and Director of the IIPHRP from its inception until April 2017, when she was advanced to the role of University of Iowa Interim Executive Vice President and Provost. Dr. Keith Mueller is appointed as Interim Dean of the College of Public Health. Vickie Miene was hired as the Deputy Director of the IIPHRP in February 2016 and now serves as the IIPHRP Interim Director.

IIPHRP Communications

A website designed and developed for the IIPHRP provides information about the Institute's strategic initiatives, leadership, funding opportunities, new programs, news releases and other information. The website is housed within the CPH website and can be accessed at this web address, www.public-health.uiowa.edu/iiphrp/. The website is a quick and easy way to find essential information about the Institute including resources to nominate an Executive-in-Residence or a Visiting Scholar, links to applications for the policy fellowship program or the collaboratory, and a webpage where donations can be provided securely through a link with the University of Iowa Foundation. In addition, there is a "contact us" link on each page to make it easy to ask questions while viewing the site.

A quarterly newsletter regularly updates stakeholders about the IIPHRP initiatives. The newsletter is sent to a growing IIPHRP listserve as well as linked through the College of Public Health's publications.



IIPHRP "In the News"

Information about the IIPHRP has been reported by local media outlets and through the CPH communications office. The IIPHRP has been featured in the INSIGHT Magazine for CPH alumni and friends and highlighted in CPH News Digest. The stories are provided in the links below

- [Putting Public Health Policy into Research](#)
- [Iowa City group works to decrease health disparities in low-income neighborhoods](#)
- [INVEST Health presentation to the Iowa City Council](#)
- [Researchers take a 'collaboratory' approach to public health concerns](#)
- [Public Health researcher and avid cyclist studies and advocates for improved bicycle safety](#)
- [New public health fellows may boost research](#)
- [Inaugural UI program names Ambassador as fellow](#)
- [Iowa City and UI selected for program to improve health in low-income neighborhoods](#)
- [Partnership aims to improve health through affordable housing](#)
- [Iowa City, U. Iowa team up to aid local low-income communities](#)
- [50 cities Selected for Invest Health](#)
- [New UI institute to address grand challenges in public health](#)



IIPHRP Programming

Policy Fellowship Program for Faculty

The College of Public Health's Policy Fellow Program, offered through the IIPHRP, provides faculty with opportunities to focus on translating public health research into practice and policy. The policy fellows work closely with the IIPHRP, their cohort (through regular meetings) and with CPH Leadership to learn engagement strategies and to deploy activities that result in direct impact to practice or policy initiatives. Participation in the Policy Fellow Program occurs through a competitive application process during the fall semester.

Policy fellows design an Action Learning Project (ALP), which is the cornerstone of their work over the course of the year-long program, that focuses on a critical public health issue. Through the year, fellows are provided technical assistance and a supportive learning environment through the IIPHRP. Together they build stakeholder coalitions, develop policy documents and develop dissemination plans. These techniques are best practices but few faculty have been formally trained to implement these strategies. Using a "hands-on" approach helps advance the impact of current research while providing concrete skills to implement similar strategies in the future.

"I don't want to do research just for research's sake, I want to be able to disseminate my findings in ways that influence policy and make positive changes in society. My experience as a policy fellow has given me a better understanding about the phases of policy making and how my research fits into that process."

- Cara Hamann

Through the year, fellows facilitate stakeholder meetings, develop educational materials and generate policy documents such as issue briefs and impact materials. In addition, they have the opportunity to meet with policy makers and other field experts as they implement their ALP.

2016-2017 Policy Fellows:



Mary Charlton is an assistant professor in the Department of Epidemiology at the College of Public Health as well as an investigator with the Iowa Cancer Registry (ICR). The ICR is a population-based cancer registry that has served the State of Iowa since 1973. The National Cancer Institute (NCI) funds the registry as part of its Surveillance, Epidemiology, and End Result's (SEER) Program. SEER is the authoritative source of cancer related incidence and

survival information in the US. Although Iowa has been recognized for having very high quality data, Iowa's reporting laws are some of the weakest. In addition, Iowa has one of the lowest rates of e-path reporting of all SEER Registries. Dr. Charlton is working to update and clarify the Iowa data collection policies that were implemented in 1973. The code changes include cost sharing and implementation of electronic reporting processes to make data collection more efficient. Meeting with multiple small stakeholder groups to help them understand the rationale for the proposed changes, as well as the challenges faced if the policies are not updated, has been key to this policy project.



Policy Briefs

Charlton, M., "Modernizing Iowa Cancer Reporting Requirements" Issue Brief, December, 2016



Cara Hamann, associate with the Department of Epidemiology at the College of Public Health, is working to increase bicycling safety. Through her policy fellowship, Hamann developed an issue brief and established a collaboration with the Iowa Bicycle Coalition. Together they arranged a Bicycle

Policy Action Forum in December 2016 where stakeholders gathered to discuss the status of bicycling safety in Iowa. Haman's research highlights that bicycling fatalities have increased in Iowa by 266% in the past two years and the top two causes include motorists hitting bicyclists from behind while changing lanes and motorist distracted driving. Consensus on policy recommendations and action steps were developed in stakeholder meetings and subsequent documents providing action steps were prepared. These tools were then widely shared through presentations at various committee meetings.



Legislation was approved to include the recommendations of making distracted driving a primary offense. Other recommendations such as requiring motorists to change lanes to pass bicyclists and to increase financial support for bicycling infrastructure were discussed but legislation for these items did not pass during the 2017 Iowa Legislative Session. The stakeholder committee plans to meet again in the Fall of 2017 to continue to advance bicycling safety policies.

Policy Briefs

Hamann, C., "Bicycling Safety in Iowa" Issue Brief, November, 2016

Hamann, C., "Iowa Bicycling Safety Policy Action Forum Recap", January, 2017



Kelli Ryckman is an associate professor in the Department of Epidemiology at the College of Public Health. Through the policy fellowship program, Dr. Ryckman is recommending changes to the guidelines for newborn screening in the neonatal intensive care unit (NICU).

State Newborn Screening Programs are critical public health services aimed at screening every child born for specific genetic, endocrine and

metabolic conditions that if left untreated, can lead to severe disability or death. In Iowa, 10% of all births (39,000 annually) are preterm, low birth weight or transferred to the NICU. It is well recognized that premature, low birth weight or sick newborns are more likely to falsely screen positive for one or more of the newborn screening tests. Transfusions, parental nutrition, medications and timing of the test in the neonatal intensive care units (NICU) can affect the validity of the newborn screening test, resulting in false positive results. To address these challenges, the Clinical and Laboratory Standards Institute (CLSI) developed guidelines to address screening, however Iowa has not yet adopted these guidelines.



Dr. Ryckman is working to implement these guidelines through the development of protocols, implementation plans and dissemination plans through her policy fellowship.

Policy Briefs

Ryckman, K., “Implementing New Guidelines for Newborn Screening in the NICU”, Issue Brief, December, 2016

Ryckman, K., “Guidelines for Screening of Preterm, Low Birth Weight and Sick Newborns”, Implementation Brief, July, 2017



Collaboratory

A collaboratory is designed to stimulate an aspirational research proposal on a public health topic. A “collaboratory” methodology expands the scope, scale and impact of public health research while providing the opportunity for new organizational networks and collaborations to form. This competitive award provides an opportunity for collaborators from different backgrounds and disciplines to come together around a topic and develop an innovative research proposal. A successful collaboratory leads to a sustainable research initiative such as a large research, service or center grant proposal that bolsters and builds upon areas of research closely linked to the college’s three areas of excellence—rural health, comparative effectiveness research, and community engagement.

The IIPHRP awarded two collaboratory’s in April 2017. The awardee’s will work over a 16-month time frame to develop partnerships, form new or expand existing networks and create a new sustainable research initiative. The IIPHRP will support these initiatives through individualized activities that can include such things as team building, team management, project management, defining and recognizing policy opportunities, website development, outreach and awareness through media and making connections to additional partners as needed to reach the goals.

Collaboratory - Human Exposure and Health Risks from Neonicotinoid Insecticides



Bill Field, professor of occupational and environmental health, is the leader of the collaboratory to Identify Human Exposure and Health Risks from Neonicotinoid Insecticides. Neonicotinoids are a relatively new class of insecticide, but have become the most widely used class of agricultural insecticides in the world.

Historically, neonicotinoid insecticides have been viewed as ideal replacements for more toxic compounds, such as organophosphates, due in part to their perceived limited potential to impact the environment and human health. Within the agricultural sector, they are preferred over other pesticides for several reasons, including their ability to be applied using a variety of methods; lower toxicity in birds, fish, and mammals; and high selectivity and potency for insects.

Few studies have been conducted to characterize human exposure to neonicotinoids or the insecticides’ potential health risks. The collaborative team will develop the infrastructure and preliminary data required to investigate the emerging potential risks of neonicotinoid exposure.

To the researchers’ knowledge, the collaborative is the first group in the U.S. to directly evaluate the potential human exposure of neonicotinoid insecticides. The research is also the first to assess neonicotinoid insecticide contamination in private wells used for drinking water, and the first to validate biomarkers necessary for future neonicotinoid-human health investigations.

[\(Neonicotinoid collaboratory team members can be found in the affiliate section of this report\)](#)



Collaboratory - Iowa Perinatal Health Research Collaborative



Kelli Ryckman, associate professor of epidemiology, is the leader of the Iowa Perinatal Health Research Collaborative (IPHRC). The central mission of the IPHRC is to develop a network of perinatal care providers and public health professionals working to improve the health outcomes of children born low birth weight (LBW) and/or preterm through innovative and multidisciplinary research initiatives. [IPHRC team members are found in the Affiliate section of this report.](#)

Advances in neonatal intensive care have drastically reduced perinatal mortality related to LBW and/or preterm births. In infants born before 27 completed weeks of gestation, there is a 65% chance of survival and a 56% chance of survival without severe impairment, nationally. In Iowa, survival without severe impairment is even higher.

Follow-up of “high risk” infants is recommended by the American Academy of Pediatrics; however, standard guidelines are lacking on how long follow-up should occur and which infants qualify as “high risk.” Individuals identified for further follow-up widely varies based on the resource availability, and children who may benefit from resources or specialized programs are undoubtedly missed or excluded. This underscores the need for perinatal research collaboratives that bring together providers, public health professionals and families to identify outcomes and health care utilization gaps for children born LBW and/or preterm.

The project will focus on three intersecting thematic areas including “Database Development” to establish a statewide database providing a platform for outcomes research, quality improvement initiatives and interventions, “Health Services and Outcomes” to focus on understanding the health care needs and outcomes of this population of children, and “Family and Community Engagement” to provide and promote existing resources for families.

Strategic Leadership Research Project, Population Prescriptions: A learning Population Health System for Reducing the Burden of Cancer



Establishing the necessary infrastructure to store, analyze, integrate and access large amounts of data is a challenge, especially regarding the millions of data points that are collected on patients annually in order to diagnose and treat cancer. Mining and visualizing this data in order to best understand it from the clinical, the research and the patient perspectives is a challenge across the health systems. This project is working to integrate cancer research resources with real-world public health and clinical care settings in order to routinely identify and deliver effective interventions for cancer prevention, risk assessment, screening, prognosis, treatment and survivorship. Additional information about this collaboratory can be found on the [IIPHRP website](#), special projects section.

The team is led by **Elizabeth Chrischilles**, Professor and Marvin A. and Rose Lee Pomerantz Chair in Public Health, and funded by the University of Iowa Office of the Vice President of Research. [Additional team members can be found in the Affiliate Section of this report.](#)

Executive-in-Residence

The College of Public Health's Executive-in-Residence Program, housed within the Institute of Public Health Research and Policy, integrates senior business leaders into the life of the college and provides unique opportunities for experts to interact closely with students and faculty. While the college hosts many external practitioners as visiting lecturers and conference participants, Executives-in-Residence foster long-term relationships with the college and help to shape and execute new strategic initiatives. The program is custom tailored to the unique capabilities and interest of each executive.

The program is a mechanism for business and community leaders to participate in the college's three-part mission: contributing to the educational experience of students, engaging with the college's research enterprise and participating in community engagement initiatives that integrate the college and society.



2016-2017 Executives-in-Residence

CPH Executive-in-Residence 2016-2017		
Laurie Zelnio, MBA	Director, Environment, Health, Safety, Standards & Sustainability	John Deere, Inc
Scott Fowler, MBA	Manager, Global Occupational Safety	John Deere, Inc
Rick Weiers, MBA	Manager, Project Safety Standards	John Deere, Inc
Jennifer Musick, Pharm D	Founder, President and Chief Health and Wellness Officer	Health Solutions
John Casko, MBA	Vice President of Business Development	IDx, LLC

Executives from John Deere, Inc., Health Solutions, and IDx, LLC participated in the program during the 2016-2017 academic year. In total, over 300 participants were involved in some aspect of the program. Each of the executives led student and faculty discussions, provided learning opportunities through lectures and seminars and met with faculty to discuss new and/or expanded collaborative partnerships.

Executive-in-Residence Activity	Participants
Collegiate Seminars	100
Classroom Lectures	121
Faculty Collaboration	75
Individual Student Mentoring	12
Total Participants	308

Several discussion sessions were held between the executives and faculty. The goal of these conversations is to build relationships and brainstorm ideas for future collaborations. Conversations include thoughts to develop specific opportunities for engagement, service, learning or research. Ideas about how to partner with industry on large grant projects, opportunities to improve workforce continuing education and ideas about student projects have been topics of conversation. Additionally, hot topics in the field are deliberated. For example, ideas about shaping the behavior of the millennial workforce, adapting new technologies and ideas about managing a variety of cultures have been areas of focus in these discussions.

"I thought this was a great event – it allowed the Executive to get to know us better and for us to get to know her better in relation to both of our organizations. [The event] was even better than I thought it would be."

- CPH Faculty Member

The program has received rave reviews from students and faculty. One student summed up her experience by saying, *"The Executive visit was **the most valuable networking experience** I have had in my five years in CPH. I greatly appreciate the college's inclusion of industry professionals - he is an asset to our college."* Another student expressed, *"Wellness is one of my interests, so I enjoyed learning more about its implementation from the real world business perspective. I learned that wellness programs work best when they are tailored to the goals of the company."*

Collegiate Seminars

Zelnio, L., "Global Ethics: How a global company ethically manages environment, health and safety in different cultures

Fowler, S., "Career Readiness – Expectations of top notch employers"

Classroom Lectures

Fowler, S., "Eco-efficiency Goals and the Impact on Global Environmental Health – a Case Challenge from Argentina

Fowler, S., "Industrial Hygiene – A Leadership Business Challenge"

Musick, J., "Organizational Interventions: Good Health is Good Business"

Zelnio, L., "Control of Occupational Hazards – A Case Challenge"

Zelnio, L., "Health Promotion Ideas to consider while Designing and Implementing Interventions"



Building Collaboration with Industry Partners – Featuring John Deere Inc.

The College of Public Health has many organizational and industry partners who work to promote environmental responsibility, prevent injuries, safeguard against disease and advocate for effective health policies for all. The IIPHRP is working to strengthen those relationships, find ways for the college and industry to creatively partner, and use each other's strengths for the benefit of student success. Although the benefits of strengthening those relationships are obvious, the time it takes to nurture those relationships must be well spent.

The relationship between John Deere, Inc. and the College of Public Health strengthened through the IIPHRP's Executive-in-Residence program. Laurie Zelnio, recently retired John Deere executive, outlined several factors that prompted Deere's interest in the Executive-in-

Residence program including enhancing the number and quality of potential employees, collaborating on projects and research, informing the company's position on policies, standards and regulations and getting familiar with the College. "So much that happens in the college has tremendous value for Deere and others in industry," said Zelnio. "There are huge benefits to maturing our relationship with the College of Public Health – benefits for Deere, for the agricultural and construction industries, and for the College that include finding placements for graduates or partners for projects and research."

"Getting to know each other including the strengths of each organization and understanding how we might work together takes time and ingenuity" says Scott Fowler, Manager of Global Occupational Safety at John



Deere, Inc. “The XIR program was the foundation that provided a number of meaningful and specific conversations that lead us to think about collaboration in a specific way.” Many ideas to build the collaboration are generated through the XIR conversations. One idea to enhance the collaboration was to utilize a long standing program through Deere’s foundation that could potentially fund student development projects at the College of Public Health.

The John Deere foundation program, invites competitive applications from several university units across the Midwest. The program supports building competencies of students and potential employees of John Deere including team work, leadership, critical thinking skills and diversity. The conversations between CPH faculty and John Deere executives opened doors as we thought about opportunities for students that would also be interesting activities for John Deere to support. IIPHRP made application to the foundation program.

The College of Public Health was awarded John Deere Foundation funding for the first time, during academic year 2016 -2017, for three

“Through my John Deere sponsored project I have learned a lot about farmers and rural workers and about myself. This project challenged me to put myself out there and to experiment with the best way to teach farmers about dangerous manure pit gases. Some farmers were not aware of the dangers, so I feel like I made a real difference in making them aware of the dangers.”

- Occupational and Environmental Health Student

student development projects. These projects not only provide an opportunity for students to gain skills and enhance learning but they also provide the opportunity for supervising faculty to work closely with industry personnel as the projects are executed. This in turn builds the relationships and continues the growth between the College and the Industry. John Deere, Inc. provides one example of how strengthening the collaboration has resulted in a stronger partnership from which to build and also increased options for innovative student development.

John Deere, Inc. Funded Student Development Projects - 2016-2017 Academic Year

- **Promoting Direct-Reading Instrument Use in Agriculture**
- **Student Experience in Farm Equipment Road Safety: A Pilot of Safe Trek**
- **Global Exposure for UI Public Health Graduate Students**

John Deere, Inc. Funded Student Development Projects - 2017-2018 Academic Year

- **Global Health Case Challenge Competition**
- **Confined Space Monitor Education For Livestock Producers**
- **Supporting Graduate Student Success through the Use of StrengthsFinder and Implicit Bias Assessment and Training**

INVEST Health

The IIPHRP is pleased to be part of the leadership team for a new national initiative, INVEST Health. The program is funded jointly by the Robert Wood Johnson Foundation and Reinvestment Fund and is designed to bring together diverse leaders from mid-sized U.S. cities across the nation to develop new strategies for increasing and leveraging private and public investments to accelerate improvements in neighborhoods facing the biggest barriers to better health. Importantly, INVEST Health is encouraging stakeholders from the Health and Housing sectors to work together to generate community driven solutions that will positively affect the health of residents.

The IIPHRP is working with the City of Iowa City, the UIHC Department of Pediatrics and the Housing Fellowship to create diverse partnerships and local leadership to generate solution driven options. Following a “Collective Impact” model, IIPHRP is guiding the community engagement, network development and data collection processes for the initiative. The City of Iowa City is the fiscal agent.

Health disparities have increased as the percentage of Iowa City residents earning less than the Federal Poverty Level has grown from 18% in 2005 to 28% in 2014. In addition, many Iowa City residents are considered cost burdened – meaning they spend more than 30% of their gross annual income towards housing. Data from 2015 indicate that 58% of Iowa City renters and 19% of Iowa City homeowners are cost burdened. In addition, rates of ER visits due to asthma and mental health concerns are rising. Children and the elderly are particularly vulnerable to physical and mental disorders linked to poor housing conditions.



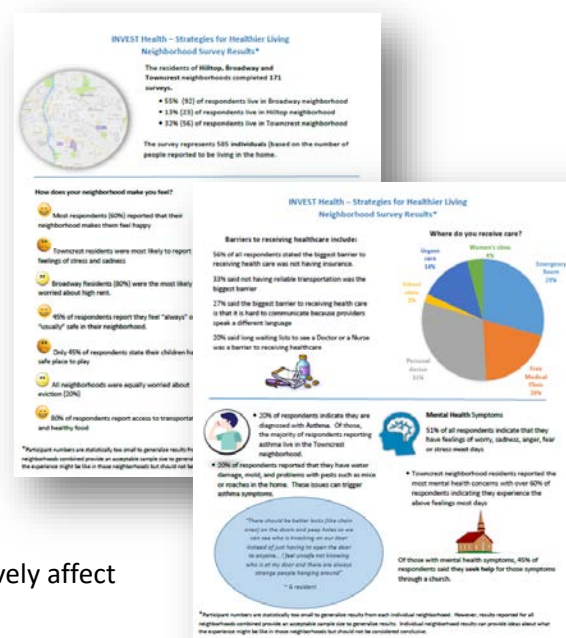
Pictured left to right: Pauline Taylor, City of Iowa City Council Member, Kathryn Dorsey, Program Manager at UIHC Department of Pediatrics, Maryann Dennis, Director of the Housing Fellowship, Vickie Miene, Interim Director of the Iowa Institute of Public Health Research and Policy, and Tracy Hightshoe, Neighborhood Services Coordinator at the City of Iowa City.



The INVEST Health initiative provides a planning opportunity to transform the way local leaders work together, with an emphasis in making changes in low-income neighborhoods to improve resident health and well-being. The Iowa City team is targeting efforts to reduce disparities in asthma and mental health diagnosis among low-income and under-represented groups in three specific neighborhood areas. Additional information can be found at <https://www.public-health.uiowa.edu/invest-health/>

INVEST Health sponsored several neighborhood focus groups and the development of a neighborhood survey to engage residents and to inform the planning process. Results of the information gathered indicate a need for social opportunities to combat isolation, needs for increased access to mental health services and to primary care services. Affordable childcare and affordable housing are highly prioritized.

The team provided the survey results through several venues and compiled a list of ideas to increase healthier living in the neighborhoods. Over the summer, residents will help prioritize the biggest needs while generating additional ideas. The INVEST Health team will prepare a report that documents the process to date and documents the ideas and priorities generated. The team will present a final report to the funder that includes a pipeline of projects designed to positively affect health by December 2017.



Activity/Event	Location	Date
INVEST Health Award Received	Iowa City, Iowa	May, 2016
Funder Sponsored Convening	Philadelphia, Pennsylvania	June, 2016
Funder Sponsored Convening	Denver, Colorado	September, 2016
Local Stakeholder Meeting – What is INVEST Health?	College of Public Health, Iowa City, Iowa	November, 2016
Local Stakeholder Meeting – Community Participation and Engagement	College of Public Health, Iowa City, Iowa	February, 2017
Neighborhood Focus Groups	Iowa City Neighborhoods	February, 2017
Funder Sponsored Convening	Roanoke Virginia	March, 2017
Neighborhood Survey	Iowa City Neighborhoods	February 2017 – April 2017
Baseline Network Survey	Iowa City Iowa	February, 2017-March, 2017
Presentation to The University of Iowa College of Public Health	College of Public Health, Iowa City	April, 2017
Funder Sponsored Convening	Akron Ohio	April 2017
Presentation at The Iowa Governor's Conference on Public Health	Des Moines, Iowa	April, 2017
Local Stakeholder Meeting – Project Brainstorm and Priorities Based On Neighborhood Survey Outcomes	Iowa City Compassion, Church of the Nazarene, Iowa City	May, 2017
Community Input to Planning Process	Iowa City Neighborhoods	June, 2017 – September, 2017
Funder Sponsored Convening	Phoenix Arizona	June, 2017
Presentation to the Iowa City Council	Iowa City, Iowa	June, 2017

Rural Policy Research Institute (RUPRI)

The Rural Policy Research Institute (RUPRI) provides unbiased analysis and information on the challenges, needs and opportunities facing rural America. RUPRI's aim is to spur public dialog and help policymakers understand the rural impacts of public policies and programs. RUPRI was founded in 1990 to address a concern of members of the Senate Agricultural Committee that no objective non-governmental source of external data, information and analysis, regarding the rural and community impacts of public policy decisions was available. Today, RUPRI is housed within the College of Public Health, Iowa Institute of Public Health Research and Policy, at the University of Iowa. RUPRI's activities encompass research, policy analysis and engagement, dissemination and outreach, and decision support tools.



RUPRI's vision is twofold:

- Rural people and places have the resources and capacities to create strong, viable, meaningful and sustainable futures that withstand and turn to advantage the forces of globalization, and economic, demographic and social change.
- Rural and urban people find common cause and understanding about the future role and governance of rural places and the contribution that rural life and culture makes to national identity.

RUPRI addresses a broad and diverse array of research, policy, and programmatic interests, across multiple public policy sectors. RUPRI scholars undertake numerous discrete projects, consultations, and technical assistance engagements, to assist policymakers at all levels to gain a better understanding of the rural implications of policy and program decisions. Recent and ongoing activities fit into broad-based goals and programs, as characterized in the following paragraphs that highlight parts of the RUPRI portfolio.

Next Generation: The Future of Arts & Culture Placemaking in Rural America, (a partnership of Art of the Rural and RUPRI) engages artists, organizations and communities across public, private and philanthropic sectors to advance collaboration, innovative strategies, and "Next Generation" leadership in rural creative placemaking. Through the expertise and networks of the Rural Policy Research Institute and Art of the Rural and the program's regional and national partners, Next Generation operates through three interlinked activities: Regional Networks, a Digital Learning Commons, and a Next Generation Conference. In October 2016, the partnership conducted the first ever National Rural Creative Placemaking Summit at the University of Iowa, featuring a keynote address from then Secretary of Agriculture Tom Vilsack, and the following topic areas: Advance Civic Culture, Cross Sectoral Innovation, Innovative Rural Practice, Rural Arts & Culture Research and Rural Investment and Infrastructure. More than 300 participants have continued the momentum established by the Summit through the aforementioned activities in this program of work. The program of work included three regional workshops on creative placemaking in the Delta Region (sponsored by the Delta Regional Authority in partnership with several national organizations including the National Endowment for the Arts) between June 26 and July 7, 2017.

National Endowment for the Arts (NEA) Research Lab. RUPRI was one of four organizations (from 44 applicants) funded in late 2016 (announced December 12) by the NEA as a Research Lab. The Rural Policy Research Institute (RUPRI) at the University of Iowa, in partnership with the organization Art of the Rural, will look at the intersection of **“The Arts, Entrepreneurship, and Innovation”** in rural contexts. RUPRI also will work with its Rural Intracultural Policy Council to develop pilot studies of rural “cultural ecologies.” The pilot studies may use social network analysis, structured interviews and respondent-driven survey sampling to test hypotheses about cultural and social capital as preconditions to innovation. The research agenda aims to address the following research questions: a) What is the link between artists (including designers) and broad societal innovation, particularly with regard to economic and job growth? and b) What role do arts organizations play in promoting civic innovation in a community?

RUPRI Analytic and Academic Programs. RUPRI’s Analytic Programs focus on wealth creation in rural America, moving beyond traditional measures of success in rural economies to a triple bottom line approach to economic, community and environmental indicators that represent more lasting well-being. RUPRI’s Analytic team was involved in the publication of a recent book entitled *Rural Wealth Creation*

RUPRI Center for Rural Health Policy Analysis and RUPRI Health Panel. The RUPRI Center for Rural Health Policy Analysis is based at the University of Iowa, in the Department of Health Management and Policy at the College of Public Health. The Center focuses on rural healthcare financing/system reform, rural systems building and meeting the healthcare needs of special rural populations. RUPRI Rural Health Panel has developed a unique role in providing policy relevant analysis of rural health services delivery to nonprofessional audiences. Since 1993 the Panel has built a particular expertise linking policy suggestions to broader conceptual frameworks. In recent years the Panel has developed and used a framework, “High Performance Rural Health System,” to structure comments and papers focused on changes in health care delivery and finance, as well as analyses of policy changes in Medicare and Medicaid. Its work can be downloaded through RUPRI’s website (www.rupri.org), including 2-4 documents annually, comment letters on proposed federal agency rules, and presentations. The RUPRI Center’s work is accessible through its website (www.ruprihealth.org) and includes 6-10 documents annually, special data releases and presentations. Of special note in past 18 months, the Panel and the Center have released documents focused on health insurance markets, changes in Medicaid enrollment, reconfiguring local health services and activities of accountable care organizations located in rural counties.



Journalist-in-Residence

Jonathan Katz, whose book, *The Big Truck That Went By: How the World Came to Save Haiti and Left Behind a Disaster*, was the inaugural College of Public Health Journalist-in-Residence during the 2016-2017 academic year. The JIR program is a new program designed to provide students, faculty and staff exposure to professional journalists and authors, and to create opportunities for learning and interaction with media experts. Understanding how to partner with reporters, authors and mass media professionals helps bring broader recognition to the public health field through increased and targeted media exposure. The program aims to create opportunities for students, faculty and staff to interact with and learn key strategies for communicating public health research and policy through traditional mass media and other emerging media outlets.



Katz provided a college-wide seminar outlining the practice of journalism, the challenges of international reporting, and proposing strategies to strengthen the relationship between public health practitioners, researchers and the media. He spoke from his experience as an Associated Press correspondent -- the only fulltime, on-site news professional -- during Haiti's 2010 earthquake and subsequent cholera outbreak, which devastated the country.

Journalist and author Roger Thurow also participated in the JIR program. Thurow provided a lecture focused on learnings while writing his book, "The First 1,000 Days". He provided insights about the importance of storytelling to engage audiences in research and academic topics. Both authors met with IIPHRP policy fellows, Dean's Scholars, and other small groups to share insights regarding how to best partner with media experts to promote research findings and to tell the story of public health.

2016-2017 Journalist-in-Residence

CPH Executive-in-Residence 2016-2017		
Jonathan Katz	Award winning Journalist, Author, and recipient of the Medill Medal for Courage in Journalism	Director, Media and Journalism initiative at Dukes John Hope Franklin Humanities Institute, Duke University
Roger Thurow	Journalist and Author, Senior Fellow, Global Agricultural and Food Policy	Chicago Council on Global Affairs

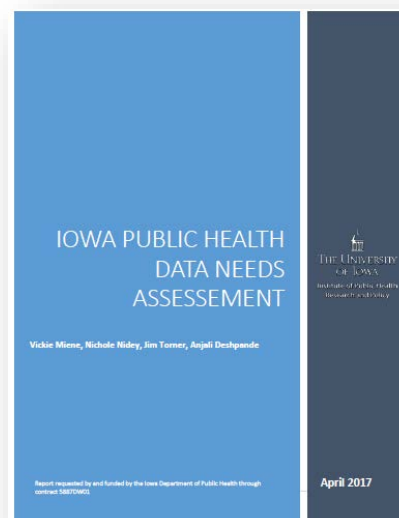
Collegiate Seminars

Katz, J., "The Media and Public Health"
Thurow, R., "1,000 Days to Change the World: Stories from the Fight to End Early Childhood Malnutrition."

Public Health Data Needs Assessment

The Iowa Institute of Public Health Research and Policy (IIPHRP) was contracted by the Iowa Department of Public Health (IDPH) in October 2016 to conduct a public health data needs assessment to better understand the needs of stakeholders and the role of the Iowa Public Health Tracking Portal (IPHTP). A mixed methods assessment that engaged multiple stakeholders, from multiple sectors through a combination of on-line surveys, focus group sessions, individual interviews and portal analytics was conducted.

The results of this assessment include short-term and long-term recommendations to guide IDPH in further development and resource assignment regarding public health data including developing indicators of success, developing training for workforce development and expanding data, linkage and mapping functionality of the IPHTP. The full report with complete recommendations can be found at <https://www.public-health.uiowa.edu/wp-content/uploads/2016/10/FINAL-IDPH-Needs-Assessment-Report.pdf>



A Study of the Impact of Iowa Health Link on Beneficiaries and Providers

Starting in April 2016, nearly all of Iowa's Medicaid beneficiaries joined one of three managed care organizations (MCOs) in Iowa. Interacting with beneficiaries and managing provider networks became the sole responsibility of the MCOs. The state of Iowa's decision to include nearly all Medicaid beneficiaries in the managed care program, known as the Iowa Health Link, is a departure from the way many other states handled at-risk populations in terms of managed care. The effects of this transition and the new program on special needs populations, including the disabled, those with behavioral health issues and those dual-eligible for Medicare, are of critical interest to the health care and health policy communities at the state and national levels. The goal of this study is to evaluate the managed care experience to date for these at-risk populations by focusing on three overarching themes that include utilization of key services, overall access to care, and quality of care. The initial step is the review of Medicaid activities in states that have already transitioned to Managed care. This report can be found at <https://www.public-health.uiowa.edu/wp-content/uploads/2016/10/Review-of-state-medicaid-activities-and-evaluations-FINAL.pdf>



IIPHRP Affiliates¹

IIPHRP Board of Advisors (Internal)

Corinne Peek-Asa, Board Chair	Associate Dean for Research and Professor, Occupational and Environmental Health	UI College of Public Health
Chuck Connerly	Professor and Director	UI Urban and Regional Planning
Peter Damiano	Professor and Director	UI Public Policy Center
Charles Swanson	Executive Director	UI Hancher Auditorium
Jennifer Harbison	Legislative Liaison	University of Iowa Hospitals and Clinics
Teresa Magnum	Professor and Director	UI Obermann Center for Advanced Studies
Ann Ricketts	Senior Assistant Vice President	UI Office of the Vice President for Research and Economic Development
Sue Curry (through 3/17)	Former CPH Dean, Current Interim Executive Vice President and Provost	University of Iowa
Edith Parker	Professor and Head, Community and Behavioral Health	UI College of Public Health
Keith Mueller	Interim Dean and Gerhard Hartman Professor of Health Management and Policy	UI College of Public Health

College of Public Health Board of Advisors (External)

Mary Rose Corrigan, Board Chair	Public Health Specialist	City of Dubuque
Kara Bahr	Health and Wellness Manager	DuPont Pioneer
Gerd Clabaugh	Director	Iowa Department of Public Health
Karen Emmons	Dean for Academic Affairs	Harvard T.H. Chan School of Public Health
Tom Evans	President and CEO	Iowa Healthcare Collaborative
Laura Jackson	Executive Vice President of Health Care Innovation and Business Development	Wellmark Blue Cross and Blue Shield
Raynard Kington	President	Grinnell College
Todd Linden	President and CEO	Grinnell Regional Medical Center
Mary Losch	Professor & Director Center for Social and Behavioral Research	University of Northern Iowa

¹ Some affiliates are listed more than once to depict various roles

Andrea McGuire	Co-Chair	Partnership for Better Health
Sarah Nusser	Vice President for Research	Iowa State University
Kirk Norris	President and CEO	Iowa Hospital Association
Martin Sepulveda	Vice President (Retired), Global Well-being Services & Health Benefits Design	IBM Corporation
John Tyrrell	Physician	Tyrrell Clinic
Stephen Ummel	Director (Retired)	PriceWaterhouseCoopers, L.L.P.
Laurie Zelnio	Director (Retired) Environment, Health , Safety, Standards & Sustainability	John Deere, Inc.

CPH Internal Leadership Committee

Edith Parker	Professor and Head, Community and Behavioral Health	UI College of Public Health
Corinne Peek-Asa	Associate Dean for Research, Professor, Occupational and Environmental Health	UI College of Public Health
Keith Mueller	Interim Dean and Gerhard Hartman Professor of Health Management and Policy	UI College of Public Health
Sue Curry (through 3/17)	Former CPH Dean, current Interim Executive Vice President and Provost	University of Iowa
Vickie Miene	Interim Director, IIPHRP	UI College of Public Health

2016-2017 Policy Fellows

Mary Charlton	Assistant Professor, Epidemiology	UI College of Public Health
Cara Hamann	Associate, Epidemiology	UI College of Public Health
Kelli Ryckman	Associate Professor, Epidemiology	UI College of Public Health

Executives-in-Residence

Laurie Zelnio, MBA	Director, Environment, Health, Safety, Standards & Sustainability	John Deere, Inc
Scott Fowler, MBA	Manager, Global Occupational Safety	John Deere, Inc
Rick Weiers, MBA	Manager, Project Safety Standards	John Deere, Inc
Jennifer Musick, Pharm D	Founder, President and Chief Health and Wellness Officer	Health Solutions
John Casco, MBA	Vice President of Business Development	IDx, LLC

Journalists-in-Residence

Jonathan Katz	Journalist and Author, Director, Media and Journalism Initiatives	Dukes John Hope Franklin Humanities Institute, Duke University
Roger Thurow	Journalist and Author, Senior Fellow, Global Agricultural and Food Policy	Chicago Council on Global Affairs

Collaboratory – Iowa Neonatal Health Research Collaborative

Kelli Ryckman Team Leader	Associate Professor, Epidemiology	UI College of Public Health
John Dagle	Professor, Department of Pediatrics	UI Carver College of Medicine
Lane Strathern	Professor, Director Iowa Center for Excellence in Developmental Disabilities, Department of Pediatrics	UI Carver College of Medicine
Steven McElroy	Professor, Interim Director, Neonatology	University of Iowa Children's Hospital
Tarah Colaizy	Associate Professor, Neonatology	University of Iowa Children's Hospital
Louis Muglia	Consultant	Cincinnati's Children's Hospital
Laura Jelliffe-Pawlowski,	Consultant	University of California, San Francisco
Allison Momany	Graduate Research Assistant, Department of Psychology	UI School of Education
Nichole Nidey	Graduate Research Assistant, Epidemiology	UI College of Public Health

Collaboratory – Human Exposure and Health Risks from Neonicotinoid Insecticides

Bill Field, Team Leader	Professor, Occupational & Environmental Health	UI College of Public Health
Wei Bao	Assistant Professor, Epidemiology	UI College of Public Health
Susie Dai	Environmental Lab Director	Iowa State Hygienic Laboratory
Manuel Gadogbe	Post Doctoral Fellow, Occupational & Environmental Health	UI College of Public Health
Michelle Hladik	Research Chemist	U.S. Geological Survey
Christopher Jones	Research Scientist	UI College of Engineering
Dana Kolpin	Research Hydrologist	U.S. Geological Survey
Hans-Joachim Lehmler	Associate Professor, Occupational & Environmental Health	UI College of Public Health
Bob Libra	Geologist	Department of Natural Resources
Charles Lynch	Professor, Epidemiology	UI College of Public Health

Keith Schilling	Geologist	Iowa Geological and Water Survey
Darrin Thompson	Graduate Fellow, Occupational & Environmental Health	UI College of Public Health
John Vargo	Environmental Lab Scientist	Iowa State Hygienic Laboratory
Peter Weyer	Director	Center for Health Effects of Environmental Contamination
Thomas Fields	Professor, Occupational & Environmental Health	UI College of Public Health

Collaboratory - A Population Health System Collaboratory for Reducing the Burden of Cancer

Elizabeth Chrischilles, Team Leader	Professor and Marvin A. and Rose Lee Pomerantz Chair in Public Health, Epidemiology	UI College of Public Health
Nick Street	Professor and Departmental Executive Officer, Management Sciences Department	UI Tippe College of Business
Brad McDowell	Director, Population Research Core	Holden Comprehensive Cancer Center
Corinne Peek-Asa	Associate Dean of Research	UI College of Public Health
Vickie Miene	Project Manager, Interim Director, IIPHRP	UI College of Public Health

IIPHRP Special Project - INVEST Health

Vickie Miene, co-chair	Leadership Team, Interim Director, IIPHRP	UI College of Public Health
Tracy Hightshoe, co-chair	Leadership Team, Neighborhood Coordinator	City of Iowa City
MaryAnn Dennis	Leadership Team, Executive Director	Housing Fellowship of Iowa City
Pauline Taylor	Leadership Team, City Council Member	City of Iowa City
Kathryn Dorsey	Leadership Team, Program Manager	Department of Pediatrics, University of Iowa
Sally Scott	Consultant	Director, Housing Coalition
Natalie Debernardi	Practicum Student, Occupational & Environmental Health	UI College of Public Health
Amanda Kahl	Practicum Student, Epidemiology	UI College of Public Health

IIPHRP Special Project - Public Health Data Needs Assessment

James Torner	Principal Investigator, Epidemiology	UI College of Public Health
Vickie Miene	Project Director, Interim Director, IIPHRP	UI College of Public Health
Anjali Deshpande	Professor, Epidemiology	UI College of Public Health
Nichole Nidey	Graduate Research Assistant, Epidemiology	UI College of Public Health
Joy Woods	Graduate Research Assistant, Health Management and Policy	UI College of Public Health

IIPHRP Special Project – A study of the Impact of Iowa Health Link on Beneficiaries and Providers

Keith Mueller	Principal Investigator, Interim Dean and Gerhard Hartman Professor of Health Management and Policy	UI College of Public Health
Vickie Miene	Project Manager, Interim Director, IIPHRP	UI College of Public Health
Fred Ullrich	Research Specialist, Health Management and Policy	UI College of Public Health
Kanika Arora	Assistant Professor, Health Management and Policy	UI College of Public Health
Brad Wright	Assistant Professor, Health Management and Policy	UI College of Public Health
Dan Shane	Assistant Professor, Health Management and Policy	UI College of Public Health

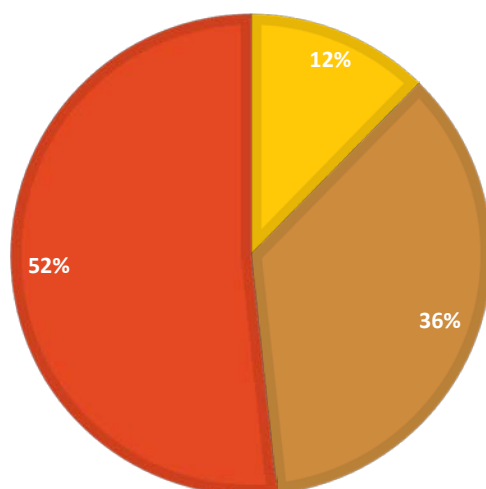
Rural Health Policy Analysis (RUPRI)

Chuck Fluharty	President and CEO, RUPRI, Clinical Professor, Health Management and Policy	UI College of Public Health
Theresa Kittridge	Vice President and COO, RUPRI, Health Management and Policy	UI College of Public Health
Joselyn Richgels	Director, National Policy Programs, RUPRI, Health Management and Policy	UI College of Public Health
Keith Mueller	Director, RUPRI Center for Rural Health Policy Analysis, Interim Dean and Gerhard Hartman Professor of Health Management and Policy	UI College of Public Health

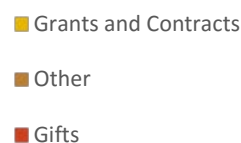
IIPHRP Resources

The IIPHRP is supported through a variety of gifts, grants and contracts. Included in the IIPHRP portfolio is the Rural Policy Research Institute (RUPRI). Awards are listed separately for the IIPHRP and RUPRI in the charts below. Total awards for the IIPHRP for the 18 month start up period totaled \$913,429. Total awards for the RUPRI enterprise, for the 12-month period, June 2016 through June 2017 totaled \$1,250,273.

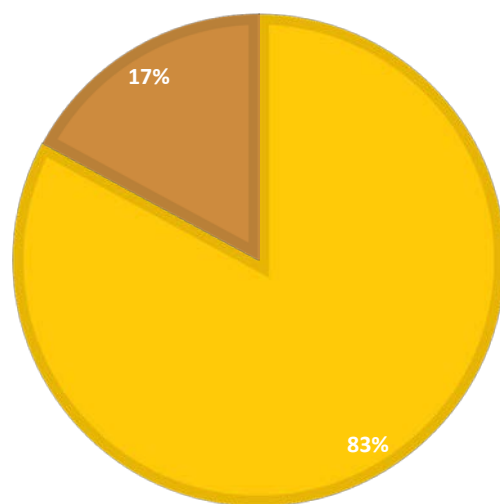
IIPHRP AWARDS - INITIAL START-UP PHASE JANUARY 2016 - JUNE 2017



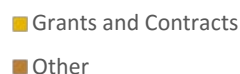
IIPHRP Awards January 2016 – June 2017	
Gifts	\$472,372
Grants and Contracts	\$112,748
Other	\$328,309
Total	\$913,429



RUPRI AWARDS 12-MONTH PERIOD JULY 2016 - JUNE 2017



RUPRI Awards June 2016 – June 2017	
Grants and Contracts	\$1,036,585
Other	\$213,688
Total	\$1,250,273



Vickie Miene, MS, MA, LMHC

Interim Director

Institute of Public Health Research and Policy
Assistant Adjunct Professor
Department of Health Management and Policy
College of Public Health
University of Iowa
(319) 384-1511
vickie-miene@uiowa.edu

Keith Mueller, PhD

Interim Dean

Gerhard Hartman Professor
Department of Health Management and Policy
College of Public Health
University of Iowa
(319) 384-4111
keith-mueller@uiowa.edu

<https://www.public-health.uiowa.edu/iiphrp/>





**Institute of
Public Health
Research and Policy**